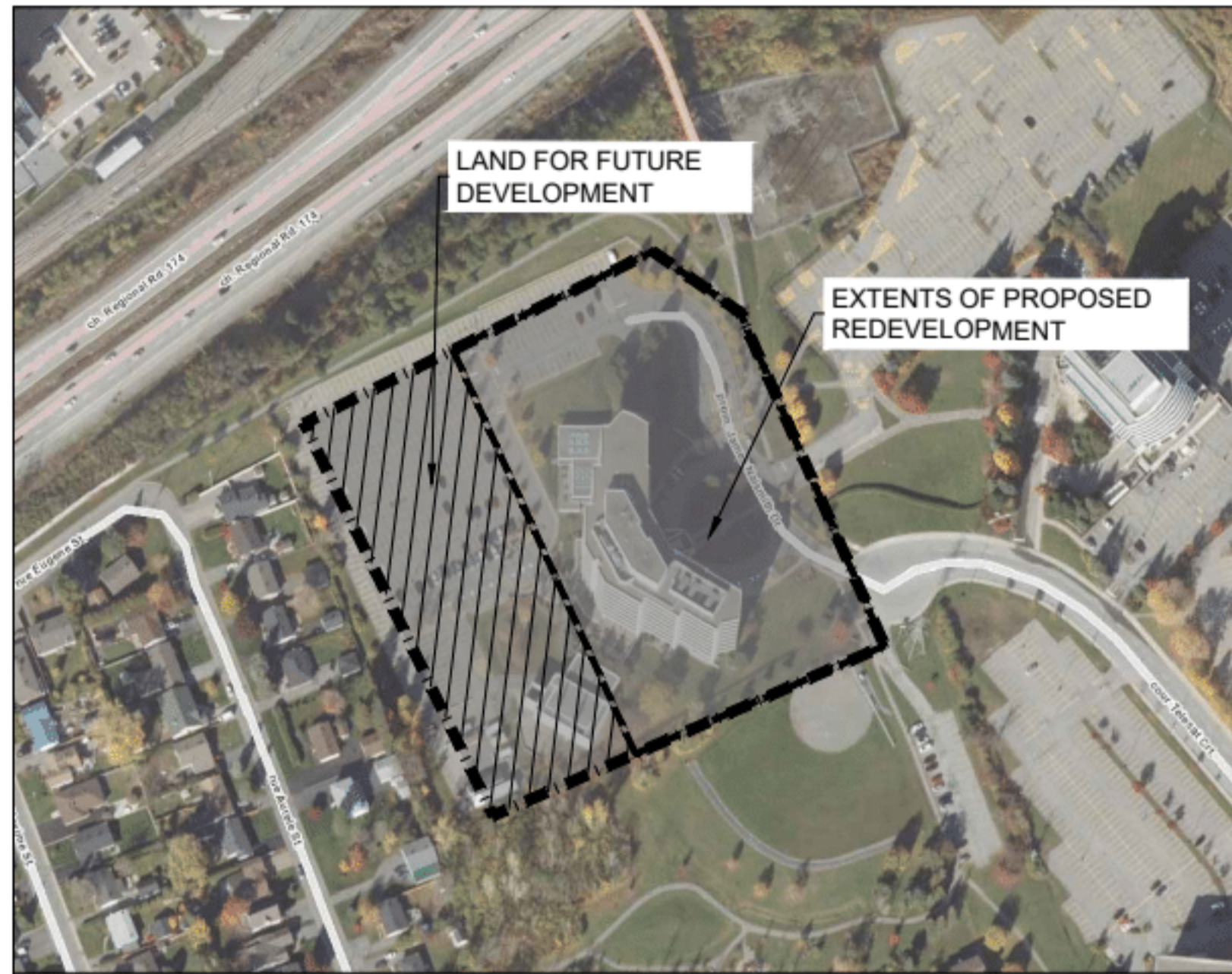


1600 JAMES NAISMITH DRIVE, OTTAWA, ONTARIO

REVISION 01



KEY PLAN (N.T.S.)

DRAWING INDEX	
TITLE PAGE	
SEDIMENT AND EROSION CONTROL PLAN	C101
DEMOLITION PLAN	C102
GRADING AND DRAINAGE PLAN	C301
SERVICING PLAN	C401
STORMWATER MANAGEMENT PLAN	C601
PRE-DEVELOPMENT WATERSHED PLAN	C701
POST-DEVELOPMENT WATERSHED PLAN	C702
CONSTRUCTION DETAIL PLAN	C901



LRJ

ENGINEERING | INGÉNIERIE

5430 Canotek Road | Ottawa, ON, K1J 9G2
www.lrl.ca | (613) 842-3434

1600 JAMES NAISMITH
OTTAWA, ONTARIO
REV.01 - ISSUED FOR MUNICIPAL APPROVAL - MAY 012, 2022
LRL PROJECT no: 220142



NOT AUTHENTIC UNLESS SIGNED AND DATED