

TOPOGRAPHICAL PLAN OF SURVEY OF
PART OF LOT 11
CONCESSION 3 (RIDEAU FRONT)
Geographic Township of Nepean
CITY OF OTTAWA
 Surveyed by Annis, O'Sullivan, Vollebek Ltd.

Scale 1 : 400

Metric
 DISTANCES SHOWN ON THIS PLAN ARE IN METRES AND
 CAN BE CONVERTED TO FEET BY DIVIDING BY 0.3048

Surveyor's Certificate
 I CERTIFY THAT :
 1. This survey and plan are correct and in accordance with the Surveys
 Act and the Surveyors Act and the regulations made under them.
 2. The survey was completed on the 19th day of January, 2022.

Date: Jan 21/22
 T. Hartwick
 Ontario Land Surveyor

Notes & Legend

Symbol	Denotes	Description
□	"	Survey Monument Planted
■	"	Survey Monument Found
SIB	"	Standard Iron Bar
SSIB	"	Short Standard Iron Bar
IB	"	Iron Bar
CC	"	Cut Cross
(WIT)	"	Witness
Meas.	"	Measured
(AOG)	"	Annis, O'Sullivan, Vollebek Ltd.
(PI)	"	Plan 4R-33597
(P2)	"	(AOG) Plan dated October 29, 2021.
— OHW —	"	Overhead Wires
CSP	"	Corrugated Steel Pipe
CPP	"	Corrugated Plastic Pipe
CCP	"	Concrete Pipe
CLF	"	Chain Link Fence
PWF	"	Post and Wire Fence
BOS	"	Bottom of Slope
TOS	"	Top of Slope
DC	"	Ditch Centerline
Inv.	"	Invert
RWT	"	Timber Retaining Wall
o WP	"	Wood Pole
o UP	"	Utility Pole
o AN	"	Anchor
∅	"	Diameter
+ 65.00	"	Location of Elevations
+ 65.00*	"	Top of Retaining Wall Elevation

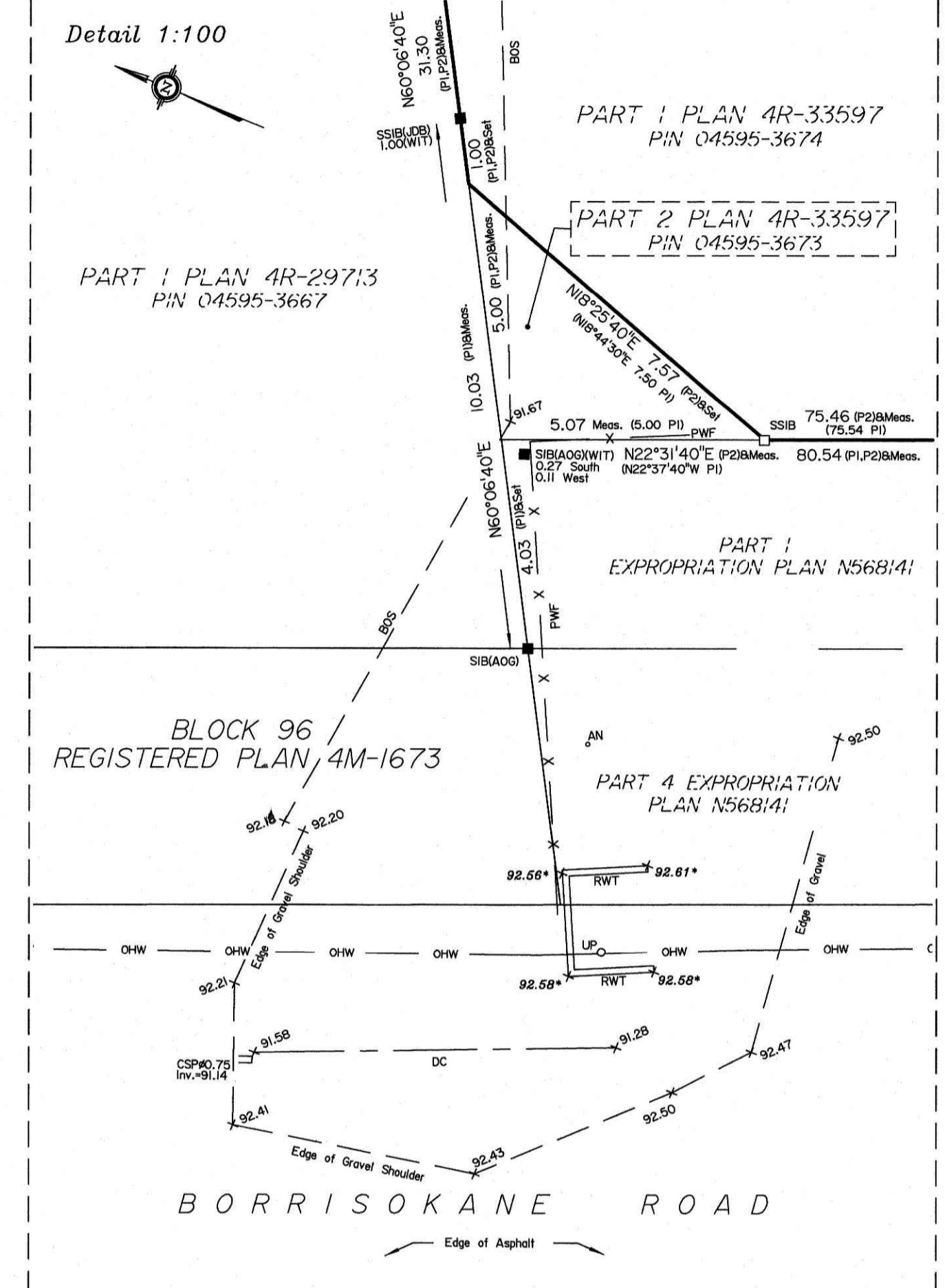
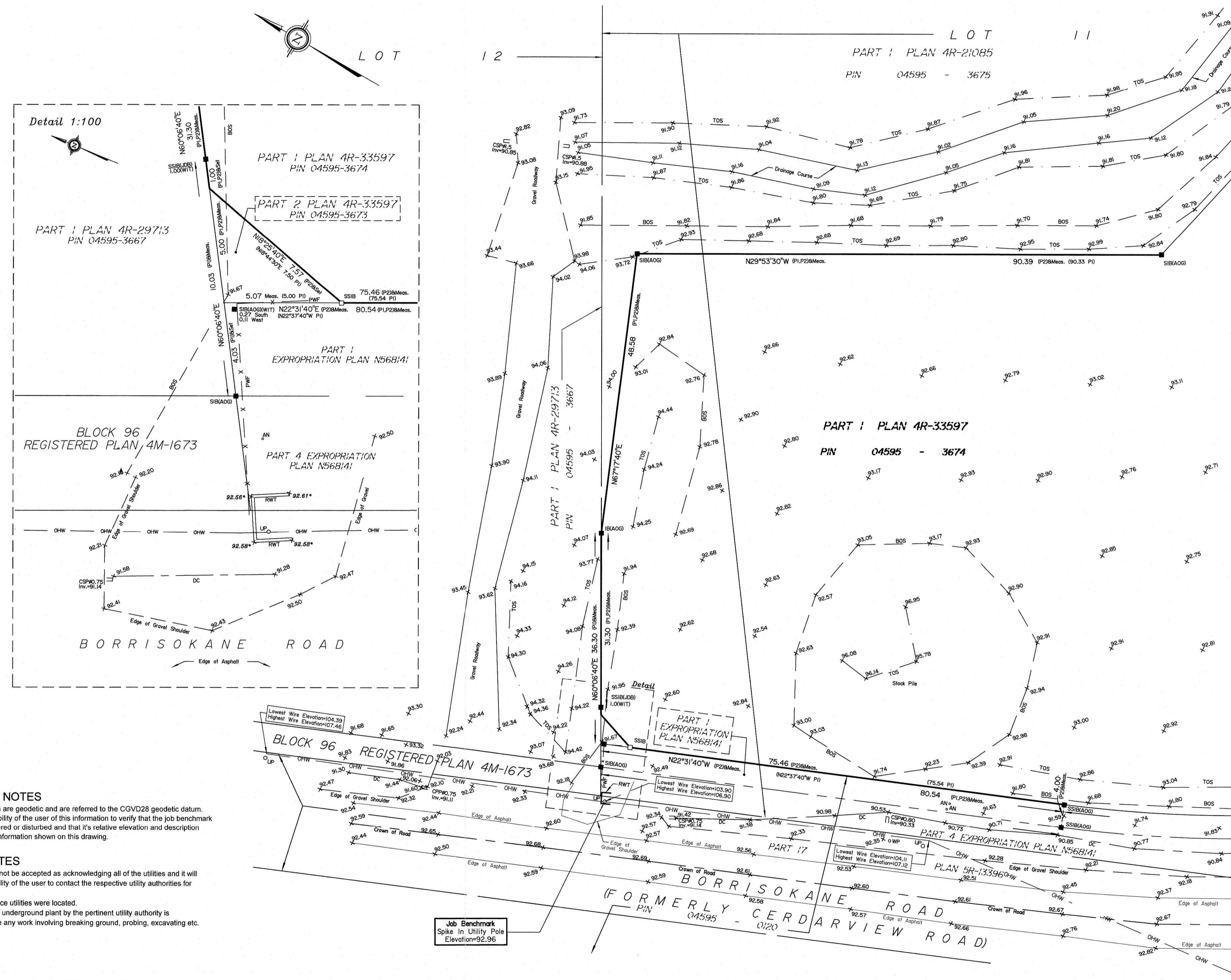
Distances shown on this plan are ground distances and can be converted to grid distances by multiplying by the combined scale factor of 0.999933.

Bearings are grid, derived from Can-Net 2016 Real Time Network GPS observations referenced to Specified Control Points 0191971338 and 01919871649, MTM Zone 9 (76°30' West Longitude) NAD-83 (original).

ASSOCIATION OF ONTARIO
 LAND SURVEYORS
 PLAN SUBMISSION FORM
V-22497

 THIS PLAN IS NOT VALID UNLESS
 IT IS AN EMBOSSED ORIGINAL
 COPY ISSUED BY THE SURVEYOR
 In accordance with
 Regulation 1026, Section 29 (3).

© Annis, O'Sullivan, Vollebek Ltd. 2022. "THIS PLAN IS PROTECTED BY COPYRIGHT"
ANNIS, O'SULLIVAN, VOLLEBEK LTD.
 14 Concourse Gate, Suite 500
 Nepean, Ont. K2E 7S6
 Phone: (613) 727-0850 / Fax: (613) 727-1079
 Email: Nepean@aosvlltd.com
 Job No. 22410-21 Borrisokane January 21, 2022(2)



Job Benchmark
 Spike In Utility Pole
 Elevation=92.96

- ELEVATION NOTES**
1. Elevations shown are geodetic and are referred to the CGVD28 geodetic datum.
 2. It is the responsibility of the user of this information to verify that the job benchmark has not been altered or disturbed and that its relative elevation and description agrees with the information shown on this drawing.
- UTILITY NOTES**
1. This drawing cannot be accepted as acknowledging all of the utilities and it will be the responsibility of the user to contact the respective utility authorities for confirmation.
 2. Only visible surface utilities were located.
 3. A field location of underground plant by the pertinent utility authority is mandatory before any work involving breaking ground, probing, excavating etc.

N:\2021\22410-21_Borrisokane_Rd_Topog\Aerial_Trimmed\Aerial_20220121_134618.PIX