

Notes:

**LEGEND**

- AVAILABLE SIGHT DISTANCE
- DECISION POINT

NOTES:  
 HSU DRIVERS EYE HEIGHT AT APPROX. 70.1m  
 BOTTOM OF SECOND FLOOR APPROX. 72.6m

04	Issued for Review	BB	2022-12-05
03	Issued for Review	AN	2022-09-12
02	Issued for Review	BB	2022-09-01
01	Issued for Review	BB	2022-05-20
REV:	DESCRIPTION:	BY:	DATE:
STATUS:			

**CGH Transportation**  
 6 Plaza Court  
 Ottawa, ON  
 K2H 7W1  
 (343) 999-9117

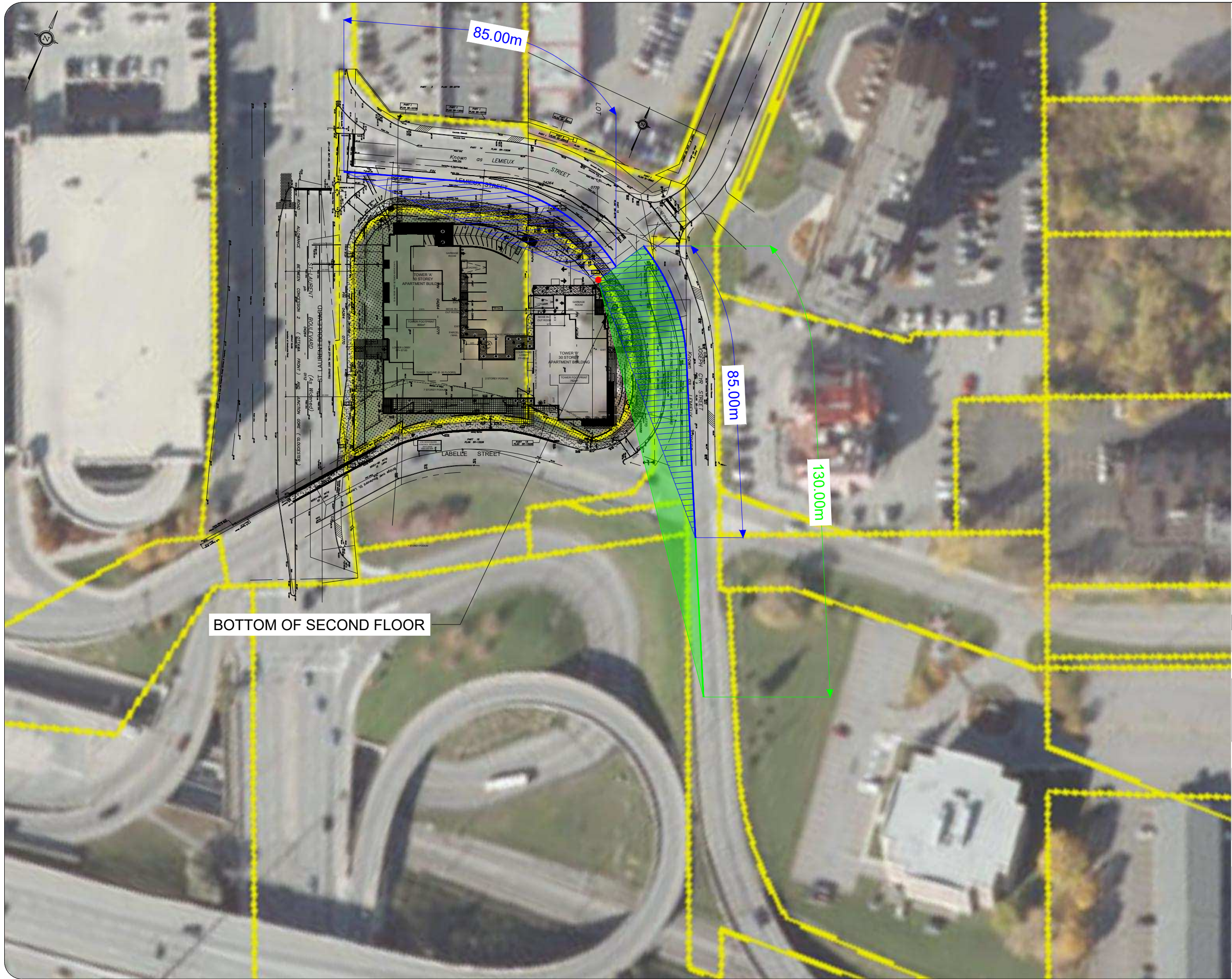
CLIENT: 1209 St. Laurent Partnership Inc.

ARCHITECT:

SITE:  
 1209 St. Laurent Blvd.

TITLE:  
 Horizontal Sightline Analysis  
 Available Sight Distance

SCALE AT A3: NTS	DATE: 2022-12-05	DRAWN: BB	CHECKED: AL
PROJECT NO: 2022-026	DRAWING NO: 001	REVISION: 04	



Notes:

**LEGEND**

- ▨ STOPPING SIGHT DISTANCE
- ▨ DEPARTURE SIGHT DISTANCE
- DECISION POINT

**DESIGN SPEED = 60km/hr**  
 STOPPING SIGHT DISTANCE = 85m  
 DEPARTURE SIGHT DISTANCE = 130m

**NOTES:**  
 HSU DRIVERS EYE HEIGHT AT APPROX. 70.1m

**BOTTOM OF SECOND FLOOR APPROX. 72.6m**

04	Issued for Review	BB	2022-12-05
03	Issued for Review	AN	2022-09-12
02	Issued for Review	BB	2022-09-01
01	Issued for Review	BB	2022-05-20
REV:	DESCRIPTION:	BY:	DATE:
STATUS:			

**CGH Transportation**  
 6 Plaza Court  
 Ottawa, ON  
 K2H 7W1  
 (343) 999-9117

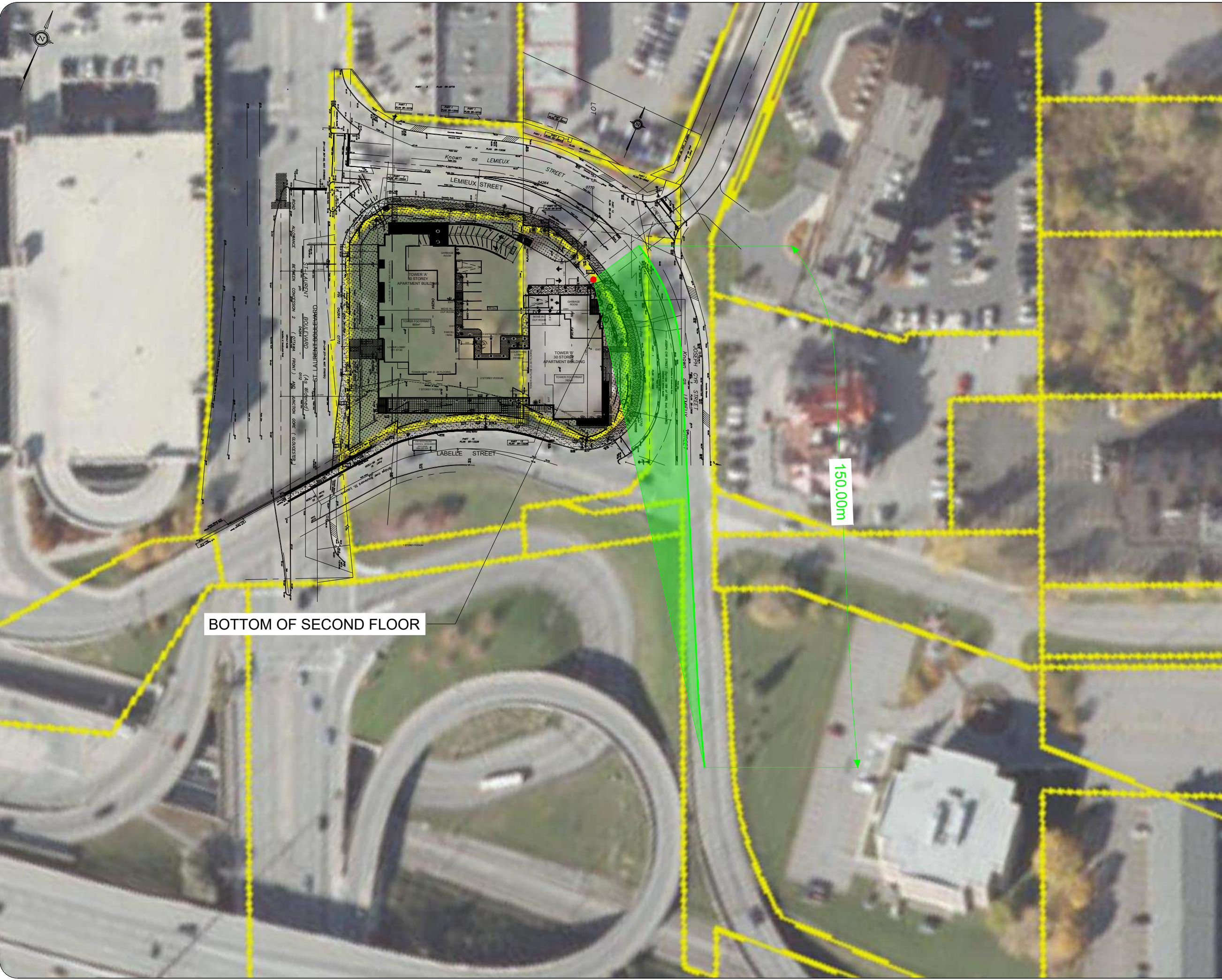
CLIENT: 1209 St. Laurent Partnership Inc.

ARCHITECT:

SITE: 1209 St. Laurent Blvd.

TITLE: Horizontal Sightline Analysis  
 60km/hr Design Speed

SCALE AT A3:	DATE:	DRAWN:	CHECKED:
NTS	2022-12-05	BB	AL
PROJECT NO:	DRAWING NO:	REVISION:	
2022-026	002	04	



Notes:

**LEGEND**

- DEPARTURE SIGHT DISTANCE
- DECISION POINT

**DESIGN SPEED = 70km/hr**  
 DEPARTURE SIGHT DISTANCE = 150m

NOTES:  
 HSU DRIVERS EYE HEIGHT AT APPROX. 70.1m

BOTTOM OF SECOND FLOOR APPROX. 72.6m

BOTTOM OF SECOND FLOOR

150.00m

04	Issued for Review	BB	2022-12-05
03	Issued for Review	AN	2022-09-12
02	Issued for Review	BB	2022-09-01
01	Issued for Review	BB	2022-05-20
REV:	DESCRIPTION:	BY:	DATE:
STATUS:			

**CGH Transportation**  
 6 Plaza Court  
 Ottawa, ON  
 K2H 7W1  
 (343) 999-9117

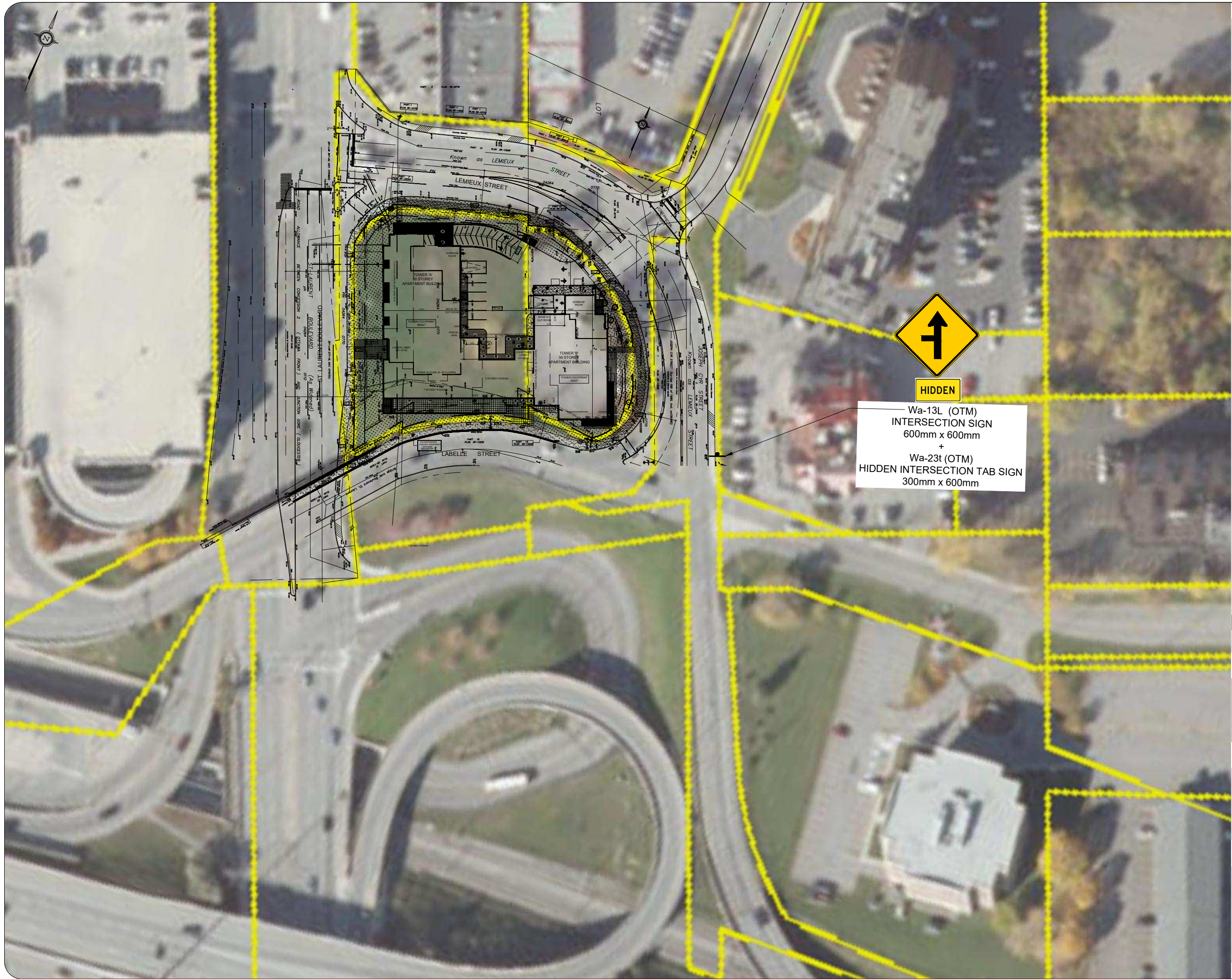
CLIENT: 1209 St. Laurent Partnership Inc.

ARCHITECT:

SITE: 1209 St. Laurent Blvd.

TITLE: Horizontal Sightline Analysis  
 70km/hr Design Speed

SCALE AT A3: NTS	DATE: 2022-12-05	DRAWN: BB	CHECKED: AL
PROJECT NO: 2022-026	DRAWING NO: 003	REVISION: 04	



Notes:

04	Issued for Review	BB	2022-12-05
03	Issued for Review	AN	2022-09-12
02	Issued for Review	BB	2022-09-01
01	Issued for Review	BB	2022-05-20
REV:	DESCRIPTION:	BY:	DATE:
STATUS:			

**CGH Transportation**  
 6 Plaza Court  
 Ottawa, ON  
 K2H 7W1  
 (343) 999-9117

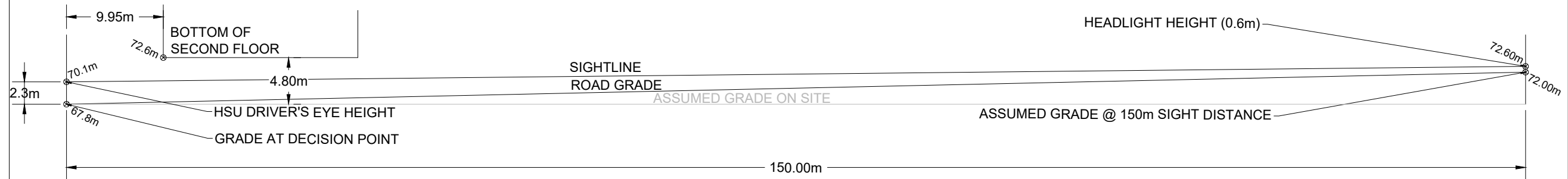
CLIENT: 1209 St. Laurent Partnership Inc.

ARCHITECT:

SITE: 1209 St. Laurent Blvd.

TITLE: Hidden Intersection Warning Signage

SCALE AT A3:	DATE:	DRAWN:	CHECKED:
NTS	2022-12-05	BB	AL
PROJECT NO:	DRAWING NO:	REVISION:	
2022-026	004	04	



Notes:

04	Issued for Review	BB	2022-12-05
03	Issued for Review	AN	2022-09-12
02	Issued for Review	BB	2022-09-01
REV:	DESCRIPTION:	BY:	DATE:
STATUS:			



**CGH Transportation**  
 6 Plaza Court  
 Ottawa, ON  
 K2H 7W1  
 (343) 999-9117

CLIENT: 1209 St. Laurent Partnership Inc.  
 ARCHITECT:

SITE: 1209 St. Laurent Blvd.  
 TITLE: Vertical Sightline Analysis

SCALE AT A3:	DATE:	DRAWN:	CHECKED:
NTS	2022-12-05	BB	AL
PROJECT NO:	DRAWING NO:	REVISION:	
2022-026	005	04	