

REQUIRE THIS PLAN TO BE DEPOSITED UNDER THE LAND TITLES ACT.

DATE: October 31, 2018

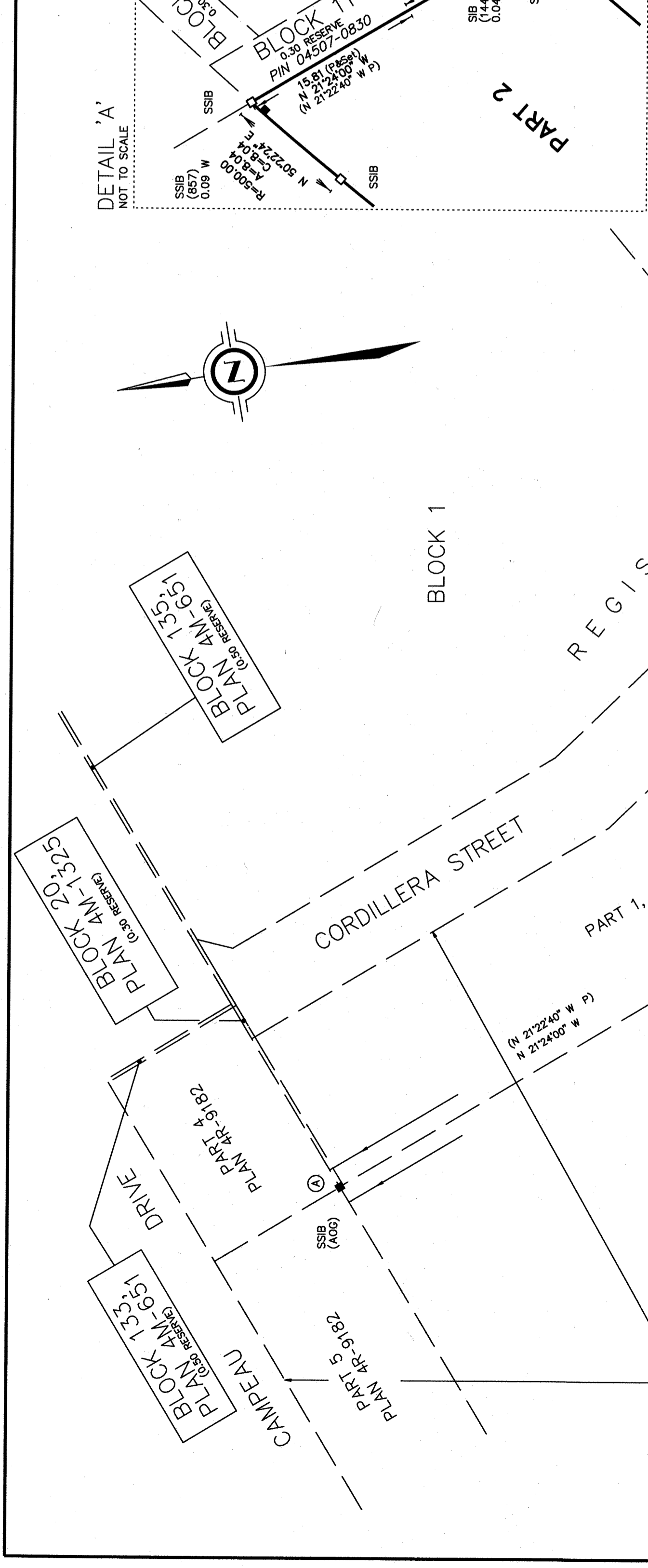
PLAN 4R-31544

RECEIVED AND DEPOSITED NOV 20, 2018

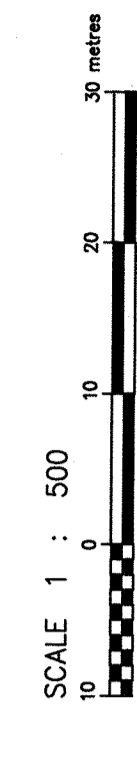
C.M. FOX
ONTARIO LAND SURVEYOR

D. Bourdeau
REPRESENTATIVE FOR THE LAND REGISTRAR FOR THE LAND TITLES DIVISION OF OTTAWA-CARLETON (No. 4)

SCHEDULE	INST./PIN
PART 1	PART OF 04507-0304
PART 2	PART OF 2 & 3
PART 3	PART OF 2 & 3



PLAN OF SURVEY OF
PART OF LOT 2 AND 3 CONCESSION 2
PART OF LOT 2 AND 3 CONCESSION 3
AND
PART OF THE ROAD ALLOWANCE BETWEEN
CONCESSIONS 2 AND 3 (AS CLOSED)
GEOGRAPHIC TOWNSHIP OF MARCH
FORMERLY CITY OF KANATA
NOW IN THE
CITY OF OTTAWA



SCALE 1 : 500

METRIC METRES AND/OR COORDINATES SHOWN ON THIS PLAN ARE IN METRES AND CAN BE CONVERTED TO FEET BY DIVIDING BY 0.3048.

NOTES

1. ALL GRID COORDINATES DERIVED FROM OBSERVED REFERENCE POINTS AND BOUNDARIES BY MEANS OF THE NETWORK (NTRN) OBSERVATIONS, WITH ADJUSTMENTS (SAS) (2010.0).

2. DISTANCES ARE GROUND AND CAN BE CONVERTED TO GRID BY MULTIPLYING BY THE COMBINED SCALE FACTOR OF 0.99991192.

INTEGRATION DATA

OBSERVED REFERENCE POINTS (ORP's): NTRN ZONE 09, NAD83 (GSPS) (2010.0).
COORDINATES TO URBAN ACCURACY PER SECTION 14 (2) OF OREG 216/10.

POINT ID	EASTING	NORTHING
ORP (A)	351 440.01	5 019 668.40
ORP (B)	351 547.90	5 019 422.86

COORDINATES CANNOT IN THEMSELVES, BE USED TO RE-ESTABLISH CORNERS OR BOUNDARIES SHOWN ON THIS PLAN.

LEGEND

SSB DENOTES SURVEY MONUMENT FOUND
SB DENOTES SURVEY MONUMENT SET
IB DENOTES STANDARD IRON BAR
IBR DENOTES IRON BAR WITH ROUND IRON BAR
WB DENOTES WOODEN BAR
WT DENOTES WELDED TEE
MEAS DENOTES MEASURED
MFA DENOTES MEASURED FAIRHALL AFFEYAT & WOODLAND LTD., O.L.S.
AOD DENOTES ANNIS O'SULLIVAN AODLEBERG LTD., O.L.S.
AUG DENOTES AUGER DENOTES SOURCE UNKNOWN
SDU DENOTES SOURCE UNKNOWN

ALL SET SSB AND IB MONUMENTS WERE USED DUE TO LACK OF OVERBURDEN AT THE SURVEY LOCATIONS. ALL MONUMENTS WERE USED IN ACCORDANCE WITH SECTION 11 (1) OF OREG 557/10.

SURVEYOR'S CERTIFICATE

I CERTIFY THAT:

- THIS SURVEY AND PLAN ARE CORRECT AND IN ACCORDANCE WITH THE SURVEYS ACT, THE SURVEYORS ACT AND THE LAND TITLES ACT AND THE REGULATIONS MADE UNDER THEM.
- THE SURVEY WAS COMPLETED ON OCTOBER 31, 2018.

October 31, 2018
DATE

C.M. FOX
ONTARIO LAND SURVEYOR

J.D. BARNES
SURVEYING
MAPPING
GIS
LIMITED

LAND INFORMATION SPECIALISTS

240 DON REDD DRIVE, SUITE 204, OTTAWA, ON K1R 1E1
T: (613) 731-7244 F: (613) 731-1885 www.jdbarnes.com

DRAWN BY: EC04 CHECKED BY: CF REFERENCE NO.: 18-10-115-00
FILE: E:\18-10-115-00\Surveying\18-10-115-00_Plan 4R-31544.dwg PLOT DATE: 11/20/2018