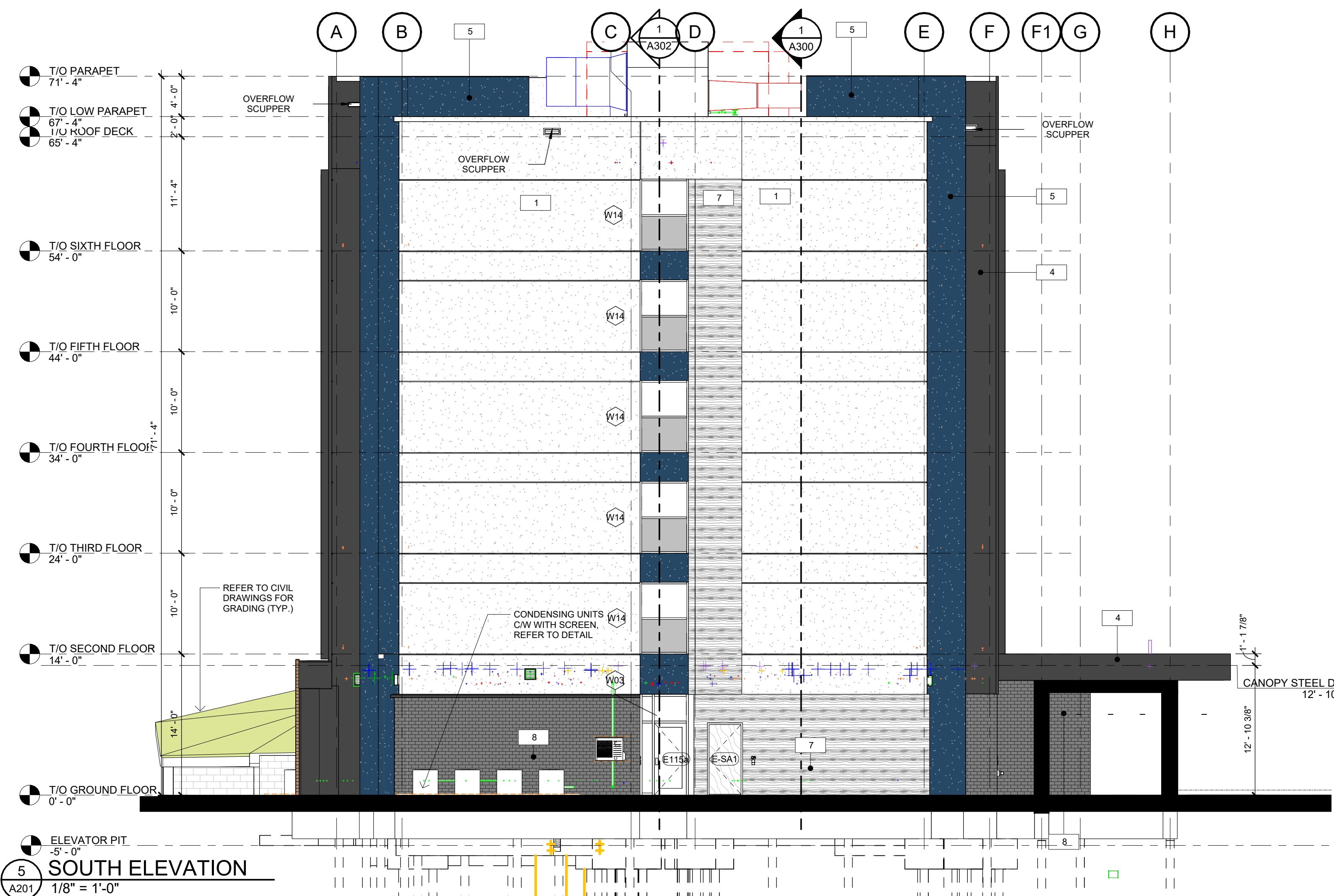
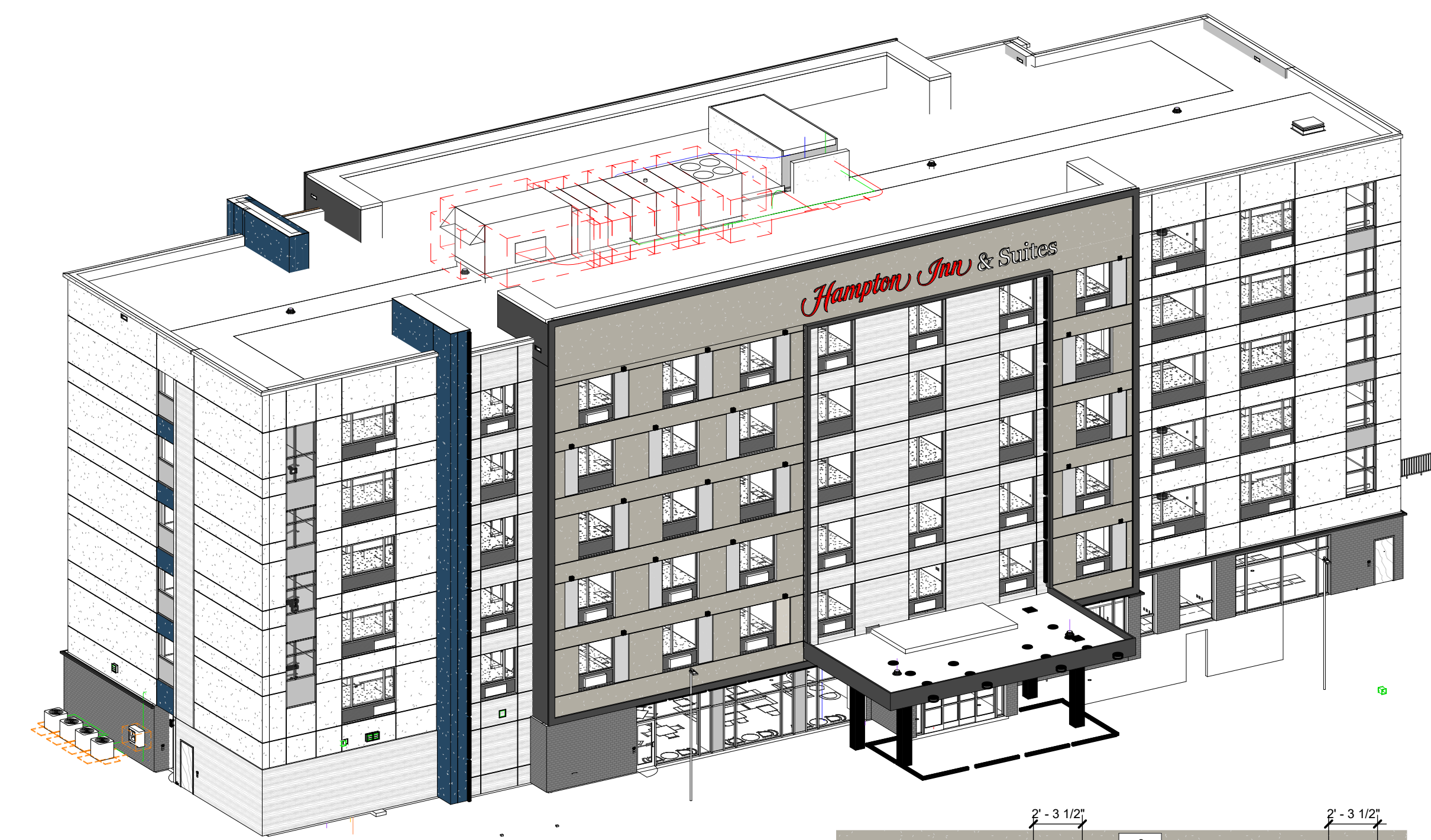


NO.	ISSUED	DATE
1	SITE PLAN APPROVAL	2022-01-19
2	25% BRAND REVIEW	2024-05-24
3	60% BRAND CLIENT REVIEW	2024-06-28
4	50% DO SUBMITTAL	2024-08-23
5	100% BRAND SUBMITTAL	2024-10-03
6	BUILDING PERMIT	2024-11-06
7	BUILDING TENDER	2024-11-27

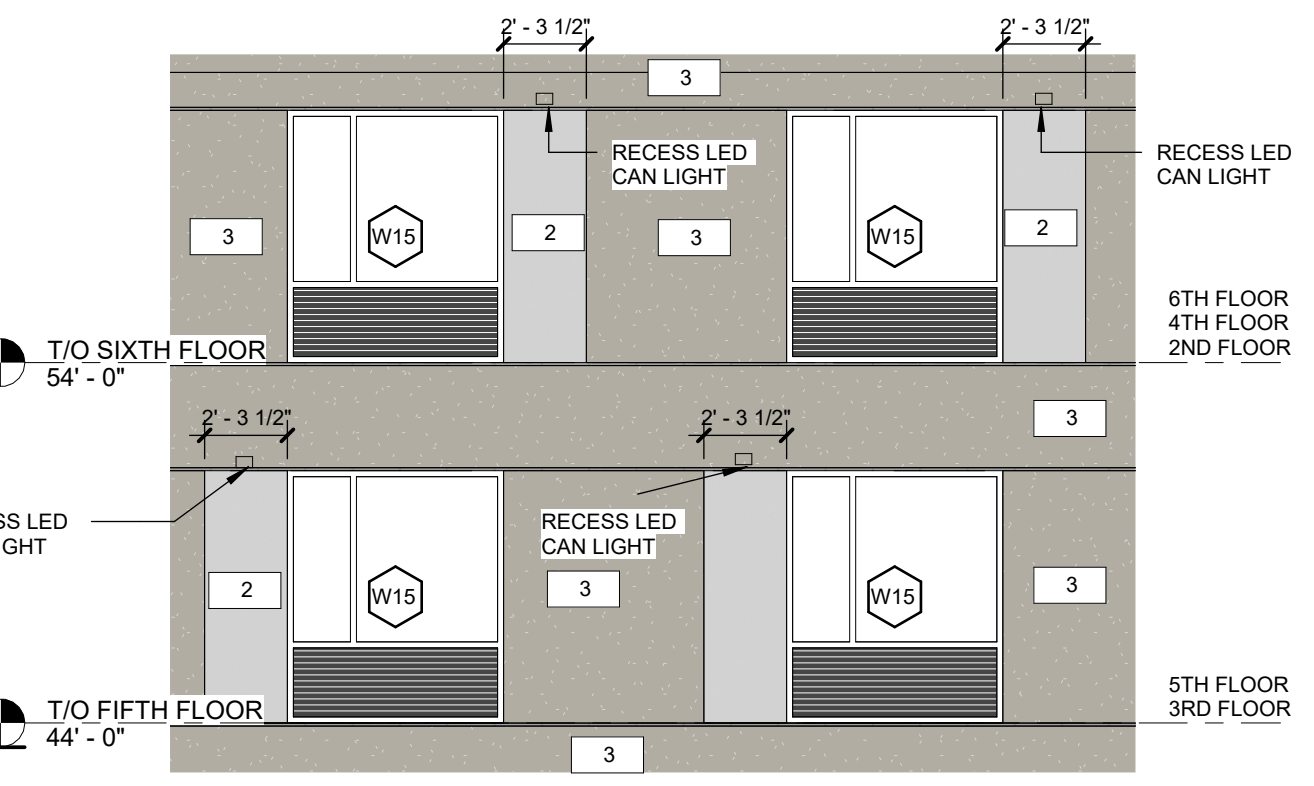


5 SOUTH ELEVATION
A201 1/8" = 1'-0"

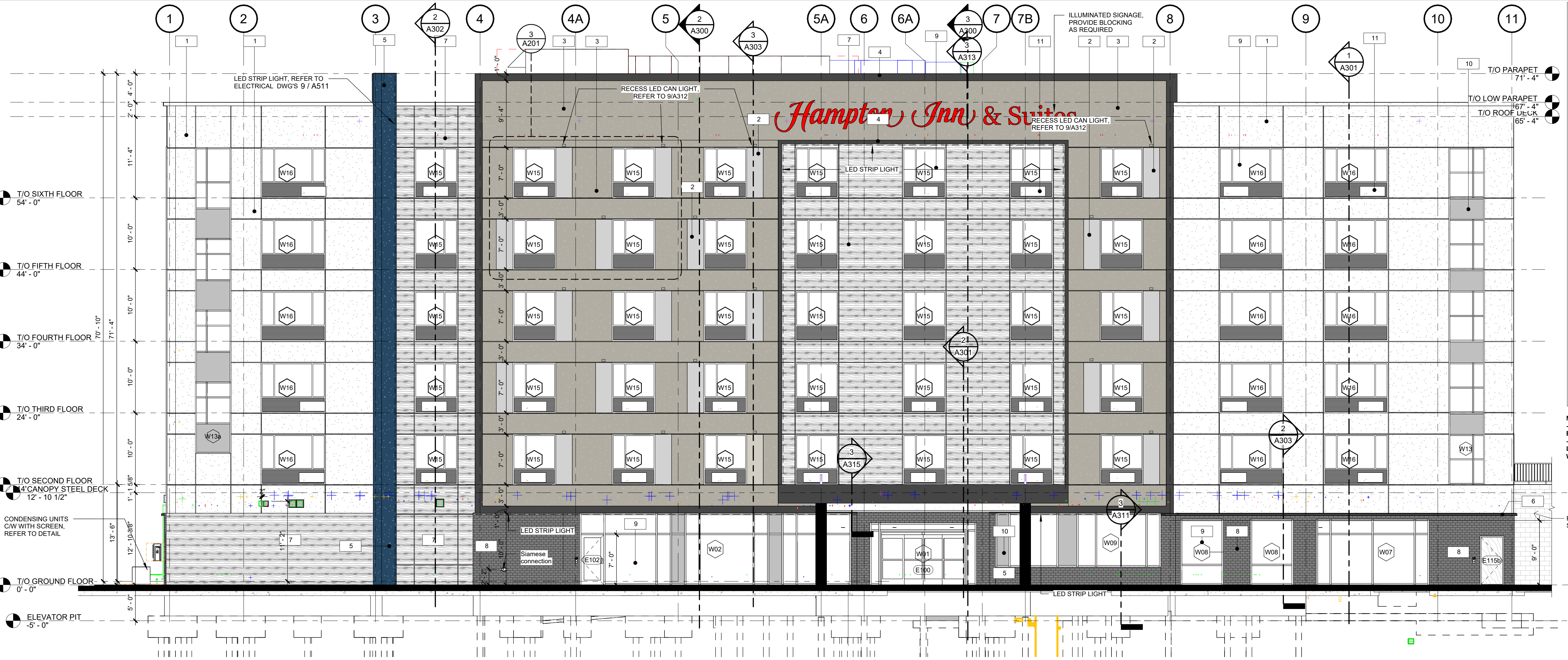


4 Axonometric
APPROVED
By Kersten Nitsche at 3:33 pm, Dec 16, 2024
Kersten Nitsche
KERSTEN NITSCHKE, MCIP RPP
MANAGER (A), DEVELOPMENT REVIEW WEST
PLANNING, DEVELOPMENT AND BUILDING SERVICES
DEPARTMENT, CITY OF OTTAWA

3 ENLARGED PART WEST ELEVATION
A201 3/16" = 1'-0"



DO NOT SCALE DRAWINGS. USE ONLY DRAWINGS MARKED "ISSUED FOR CONSTRUCTION". VERIFY CONFIGURATIONS AND DIMENSIONS ON SITE BEFORE BEGINNING WORK. NOTIFY ARCHITECT IMMEDIATELY OF ANY ERRORS, OMISSIONS OR DISCREPANCIES.
CHAMBERLAIN ARCHITECT SERVICES LIMITED AND CHAMBERLAIN CONSTRUCTION SERVICES LIMITED HAVE SIMILAR OWNERSHIP.
CHAMBERLAIN ARCHITECT SERVICES LIMITED HAS COPYRIGHT. CONSTRUCTING A SUBSTANTIALLY SIMILAR BUILDING WITHOUT PERMISSION MAY INFRINGE THE COPYRIGHT OWNERS RIGHTS. MAKING MINOR CHANGES TO PLANS DOES NOT NECESSARILY AVOID COPYRIGHT INFRINGEMENT. INNOCENT INFRINGEMENT IS NOT A DEFENSE TO COPYRIGHT INFRINGEMENT. © CHAMBERLAIN ARCHITECT SERVICES LIMITED.



FINISH LEGEND

1	EIFS-1 EXTERIOR INSULATION FINISH SYSTEM (EIFS) COLOUR 1 - DRYVIT 104 COVER SKY BY DRYVIT OR APPROVED EQUAL
2	EIFS-2 EXTERIOR INSULATION FINISH SYSTEM (EIFS) COLOUR 2 - DRYVIT TERRANO 208 EVEREST BY DRYVIT OR APPROVED EQUAL
3	EIFS-3 EXTERIOR INSULATION FINISH SYSTEM (EIFS) COLOUR 3 - DRYVIT TERRANO 200 GIBRALTER BY DRYVIT OR APPROVED EQUAL
4	EIFS-4 EXTERIOR INSULATION FINISH SYSTEM (EIFS) COLOUR 4 - DRYVIT TERRANO 208 VESUVIUS BY DRYVIT OR APPROVED EQUAL
5	EXTERIOR INSULATION FINISH SYSTEM (EIFS) COLOUR: BENJAMIN MOORE, CHAMPION COBALT, 2061-20
6	PRECAST CONCRETE SILL - TYPICAL AT TOP OF BRICK - COLOUR: BLACK
7	ACM PANEL COLOUR: WOOD - DEEP WALNUT 18-2768
8	BRICK VENEER: BRAMPTON BRICK JUMBO SIZE, COLOUR: RAVEN PREMIER PLUS
9	CLEAR GLASS
10	SPANDREL GLASS 6mm CLEAR HEAT STRENGTHENED GLASS, BACK PAINTED (#2) WITH OPAICI COAT 300, COLOR #820 HARMONY GRAY.
11	PTAC LOUVRES - COLOUR BLACK
12	THERMALLY BROKEN WINDOW MULLION - BLACK

NOTE:
- ALL EXTERIOR WINDOW FRAME AND MULLIONS TO BE COLOUR BLACK
- ALL LOUVRES COLOUR TO MATCH ADJACENT SURFACE COLOUR
- LOUVRES COLOUR IN A WINDOW TO BE COLOUR BLACK TO MATCH WINDOW FRAME

RETAINING WALL, REFER TO SITE PLAN AND STRUCT. DWGS

2 EAST ELEVATION
A201 1/8" = 1'-0"



KANATA HAMPTON INN & SUITES

PROTOTYPE V7.0
1305 MARITIME WAY,
KANATA, ON

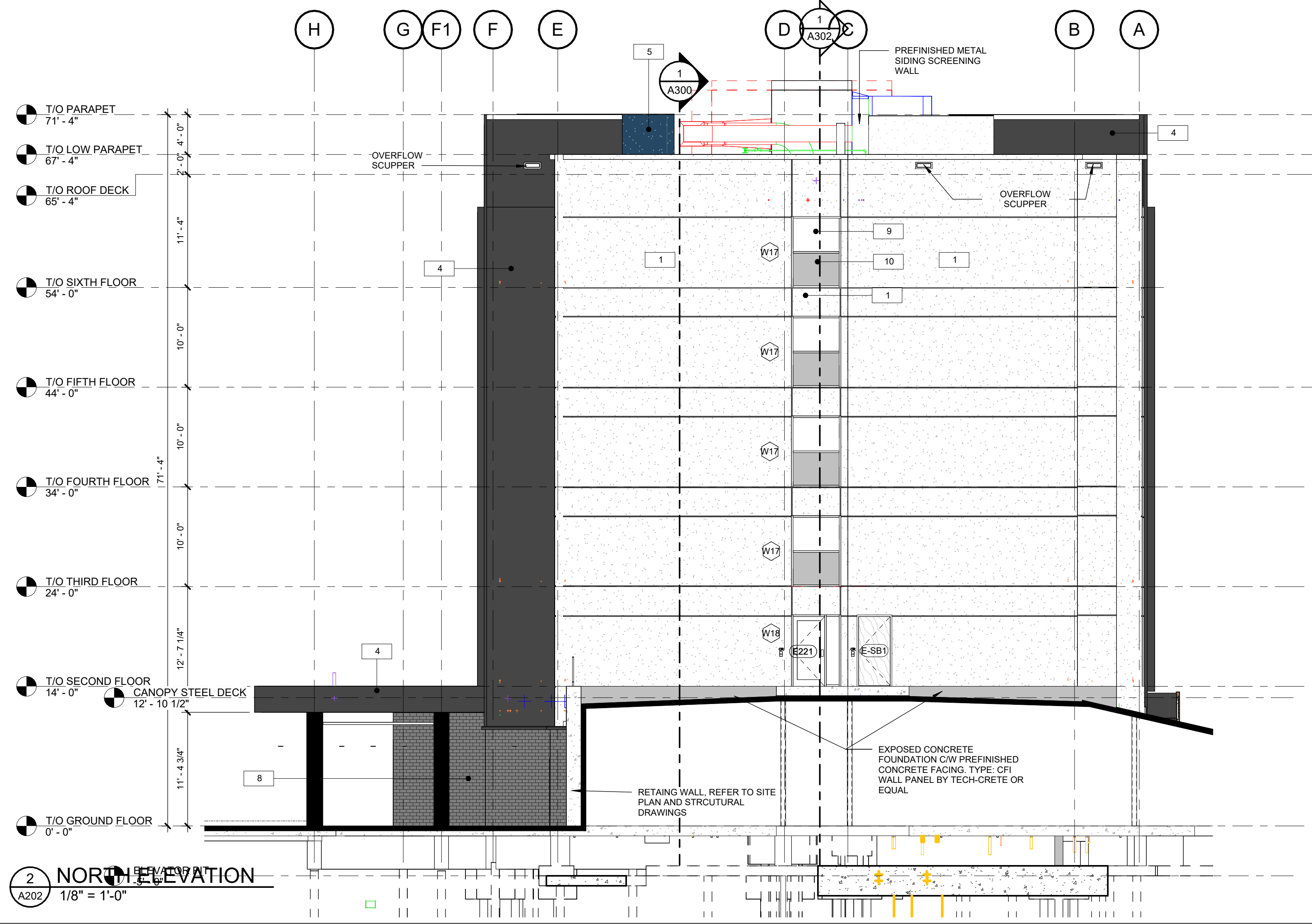
EXTERIOR ELEVATIONS (NORTH & WEST)

START DATE	16 SEPT 2019
DRAWN BY	YW
CHECKED BY	HF
SCALE	As indicated
PROJECT NO.	117079
DRAWING	

A201

C:\Users\kmesheff\Documents\117079 - Hampton Inn and Suites - Kanata - Building - Revit 2024_kmesheff.rvt

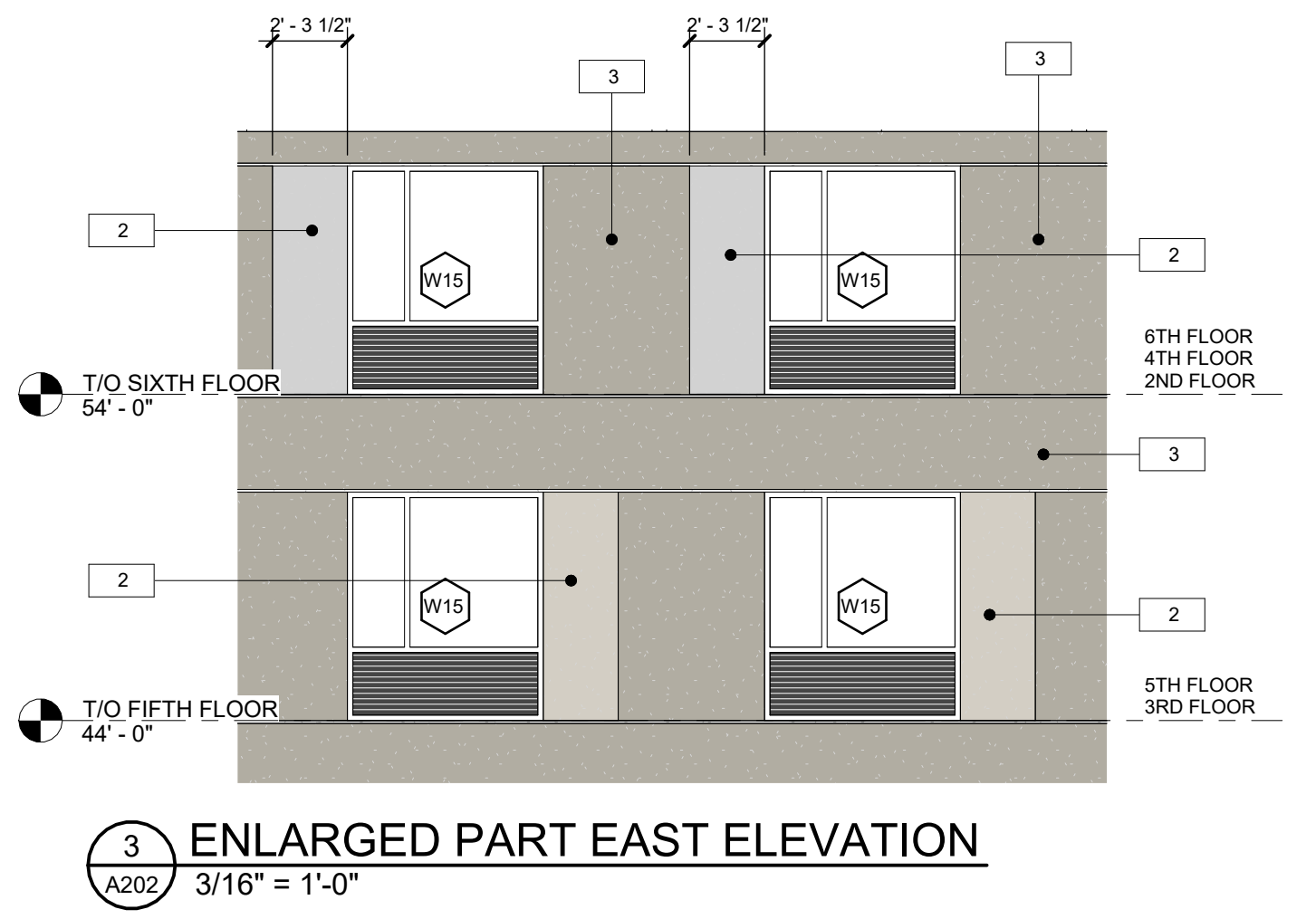
NO.	ISSUED	DATE
1	SITE PLAN APPROVAL	2022-01-19
2	25% BRAND REVIEW	2024-05-24
3	60% BRAND CLIENT REVIEW	2024-06-28
4	50% DD SUBMITTAL	2024-08-23
5	100% BRAND SUBMITTAL	2024-10-03
6	BUILDING PERMIT	2024-11-06
7	BUILDING TENDER	2024-11-27



APPROVED
By Kersten Nitsche at 3:33 pm, Dec 16, 2024

Kersten Nitsche

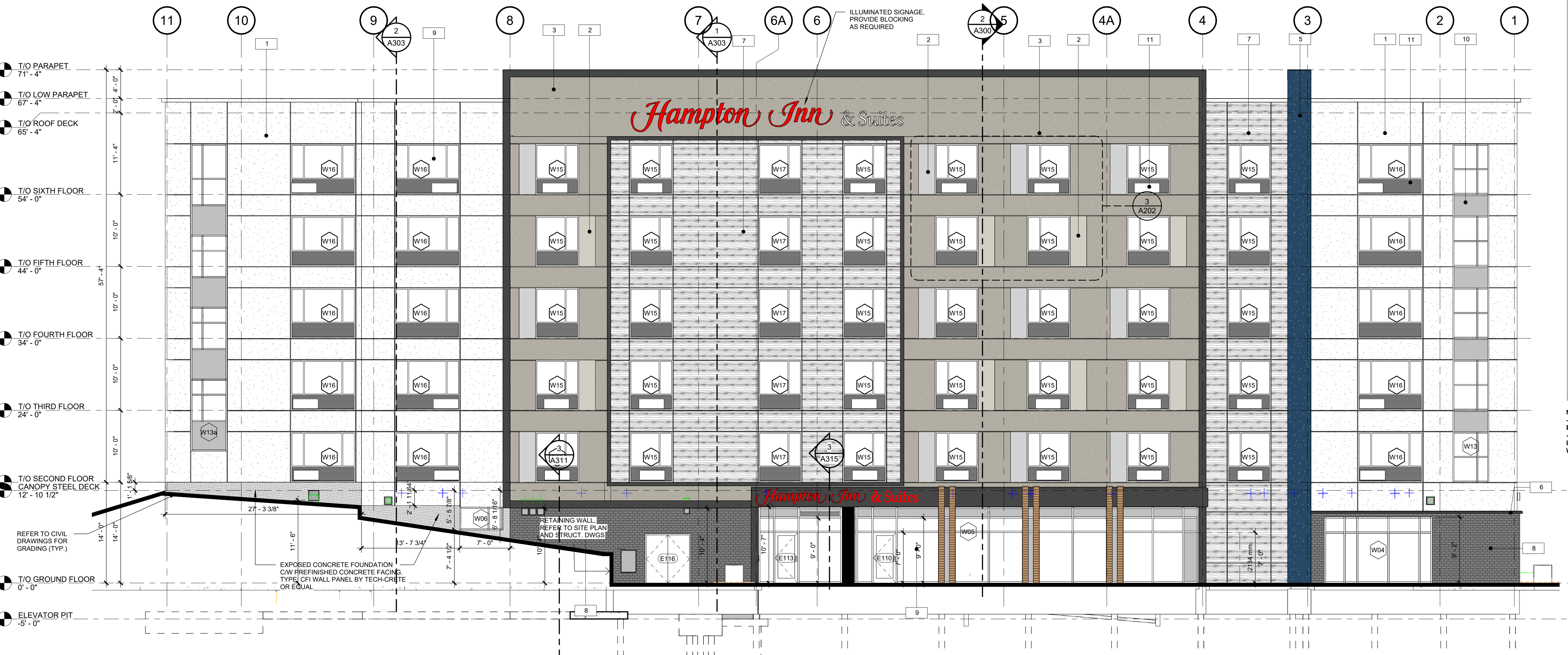
KERSTEN NITSCHÉ, MCIP RPP
MANAGER (A), DEVELOPMENT REVIEW WEST
PLANNING, DEVELOPMENT AND BUILDING SERVICES
DEPARTMENT, CITY OF OTTAWA



DO NOT SCALE DRAWINGS. USE ONLY DRAWINGS MARKED 'ISSUED FOR CONSTRUCTION'. VERIFY CONFIGURATIONS AND DIMENSIONS ON SITE BEFORE BEGINNING WORK. NOTIFY ARCHITECT IMMEDIATELY OF ANY ERRORS, OMISSIONS OR DISCREPANCIES.

CHAMBERLAIN ARCHITECT SERVICES LIMITED AND CHAMBERLAIN CONSTRUCTION SERVICES LIMITED HAVE SIMILAR OWNERSHIP.

CHAMBERLAIN ARCHITECT SERVICES LIMITED HAS COPYRIGHT. CONSTRUCTING A SUBSTANTIALLY SIMILAR BUILDING WITHOUT PERMISSION MAY INFRINGE THE COPYRIGHT OWNERS RIGHTS. MAKING MINOR CHANGES TO PLANS DOES NOT NECESSARILY AVOID COPYRIGHT INFRINGEMENT. INNOCENT INFRINGEMENT IS NOT A DEFENSE TO COPYRIGHT INFRINGEMENT. © SEAL



FINISH LEGEND

1	EIFS-1 EXTERIOR INSULATION FINISH SYSTEM (EIFS) COLOUR 1 - DRYVIT 104 COVER SKY BY DRYVIT OR APPROVED EQUAL
2	EIFS-2 EXTERIOR INSULATION FINISH SYSTEM (EIFS) COLOUR 2 - DRYVIT TERRANEO 208 EVEREST BY DRYVIT OR APPROVED EQUAL
3	EIFS-3 EXTERIOR INSULATION FINISH SYSTEM (EIFS) COLOUR 3 - DRYVIT TERRANEO 200 GIBRALTER BY DRYVIT OR APPROVED EQUAL
4	EIFS-4 EXTERIOR INSULATION FINISH SYSTEM (EIFS) COLOUR 4 - DRYVIT TERRANEO 206 VESUVIUS BY DRYVIT OR APPROVED EQUAL
5	EXTERIOR INSULATION FINISH SYSTEM (EIFS) COLOUR: BENJAMIN MOORE, CHAMPION COBALT, 2061-20
6	PRECAST CONCRETE SILL - TYPICAL AT TOP OF BRICK - COLOUR: BLACK
7	ACM PANEL COLOUR: WOOD - DEEP WALNUT 18-2768
8	BRICK VENEER - BRAMPTON BRICK JUMBO SIZE, COLOUR: RAVEN PREMIER PLUS
9	CLEAR GLASS
10	SPANDREL GLASS 6mm CLEAR HEAT STRENGTHENED GLASS, BACK PAINTED (#2) WITH OPACI COAT 300, COLOR #820 HARMONY GRAY.
11	PTAC LOUVRES - COLOUR BLACK
12	THERMALLY BROKEN WINDOW MULLION - BLACK

NOTE:
- ALL EXTERIOR WINDOW FRAME AND MULLIONS TO BE COLOUR BLACK
- ALL LOUVRES COLOUR TO MATCH ADJACENT SURFACE COLOUR
- LOUVRES COLOUR IN A WINDOW TO BE COLOUR BLACK TO MATCH WINDOW FRAME

KANATA HAMPTON INN & SUITES

PROTOTYPE V7.0
1305 MARITIME WAY,
KANATA, ON

SHEET NAME

EXTERIOR ELEVATIONS (SOUTH & EAST)

START DATE	16 SEPT 2019
DRAWN BY	YW
CHECKED BY	HF
SCALE	As indicated
PROJECT NO.	117079
DRAWING	

A202

1 WEST ELEVATION
A202 1/8" = 1'-0"

C:\Users\mshah\OneDrive\Documents\117079 - Hampton Inn and Suites - Kanata - Building - Revit 2024 - kshah.rvt