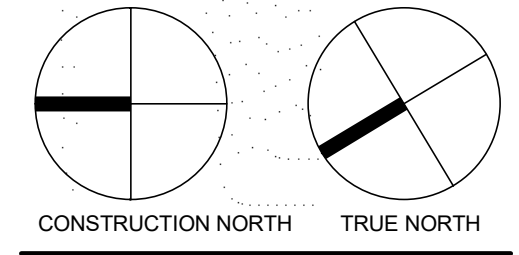


NO.	ISSUED	DATE
1	SITE PLAN APPROVAL	2022.01.19

DO NOT SCALE DRAWINGS. USE ONLY DRAWINGS MARKED "ISSUED FOR CONSTRUCTION". VERIFY CONFIGURATIONS AND DIMENSIONS ON SITE BEFORE BEGINNING WORK. NOTIFY ARCHITECT IMMEDIATELY OF ANY ERRORS, OMISSIONS OR DISCREPANCIES.

CHAMBERLAIN ARCHITECT SERVICES LIMITED AND CHAMBERLAIN CONSTRUCTION SERVICES LIMITED HAVE SIMILAR OWNERSHIP.

CHAMBERLAIN ARCHITECT SERVICES LIMITED HAS COPYRIGHT. CONSTRUCTING A SUBSTANTIALLY SIMILAR BUILDING WITHOUT PERMISSION MAY INFRINGE THE COPYRIGHT OWNERS RIGHTS. MAKING MINOR CHANGES TO PLANS DOES NOT NECESSARILY AVOID COPYRIGHT INFRINGEMENT. INDECENT INFRINGEMENT IS NOT A DEFENSE TO COPYRIGHT INFRINGEMENT. ©



KANATA HAMPTON INN

1251 MARITIME WAY,
KANATA, ON

SHEET NAME

EXTERIOR ELEVATION I

START DATE	16 SEPT 2019
DRAWN BY	LGJ + MOR
CHECKED BY	SM
SCALE	1 : 100
PROJECT NO.	117079

DRAWING

A201



MATERIAL LEGEND
 GLZ - GLAZING - CLEAR
 WD - EXTERIOR INSULATION PANEL - WOOD FINISH - WALNUT
 STK - EXTERIOR INSULATION PANEL - STACKED BRICK FINISH
 BLK - EXTERIOR INSULATION PANEL - BLACK FINISH
 GRY - EXTERIOR INSULATION PANEL - LIGHT GREY
 STN - CHARCOAL STONE
 SPN - SPANDREL PANEL

1 EAST ELEVATION
A201 1 : 100



2 WEST ELEVATION
A201 1 : 100

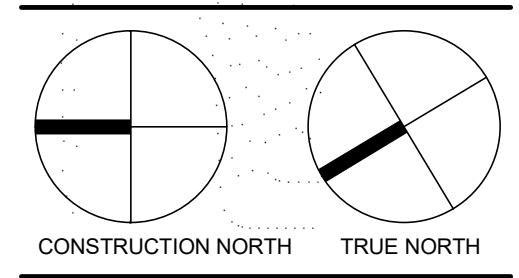
C:\Users\mario\Documents\117079 - Hampton Inn and Suites - Kanata - Building - 2022.01.19_sma.docx

NO.	ISSUED	DATE
1	SITE PLAN APPROVAL	2022.01.19

DO NOT SCALE DRAWINGS. USE ONLY DRAWINGS MARKED "ISSUED FOR CONSTRUCTION". VERIFY CONFIGURATIONS AND DIMENSIONS ON SITE BEFORE BEGINNING WORK. NOTIFY ARCHITECT IMMEDIATELY OF ANY ERRORS, OMISSIONS OR DISCREPANCIES.

CHAMBERLAIN ARCHITECT SERVICES LIMITED AND CHAMBERLAIN CONSTRUCTION SERVICES LIMITED HAVE SIMILAR OWNERSHIP.

CHAMBERLAIN ARCHITECT SERVICES LIMITED HAS COPYRIGHT. CONSTRUCTING A SUBSTANTIALLY SIMILAR BUILDING WITHOUT PERMISSION MAY INFRINGE THE COPYRIGHT OWNERS RIGHTS. MAKING MINOR CHANGES TO PLANS DOES NOT NECESSARILY AVOID COPYRIGHT INFRINGEMENT. INNOCENT INFRINGEMENT IS NOT A DEFENSE TO COPYRIGHT INFRINGEMENT. ©



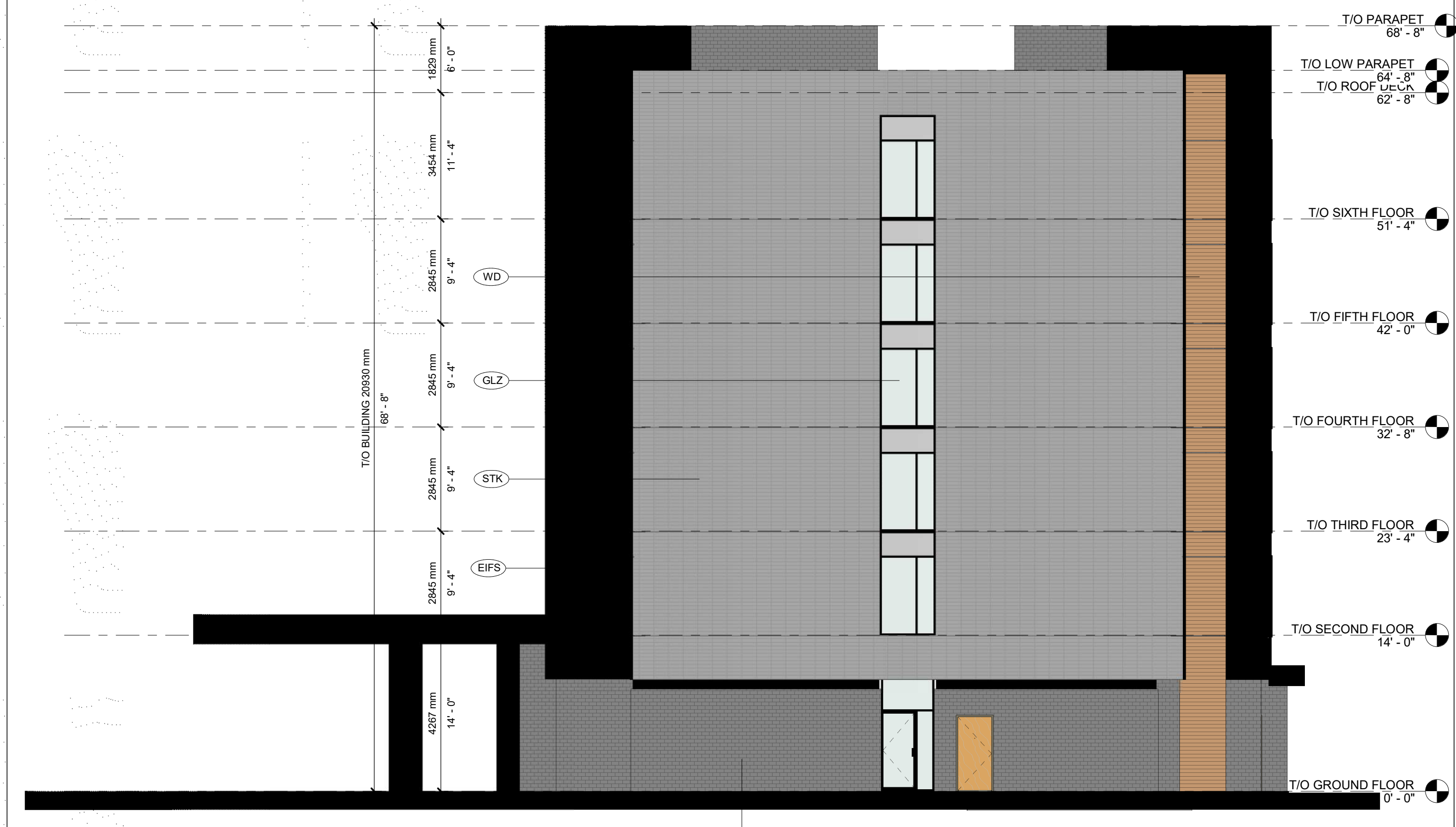
KANATA HAMPTON INN
1251 MARITIME WAY,
KANATA, ON

SHEET NAME

EXTERIOR ELEVATION II

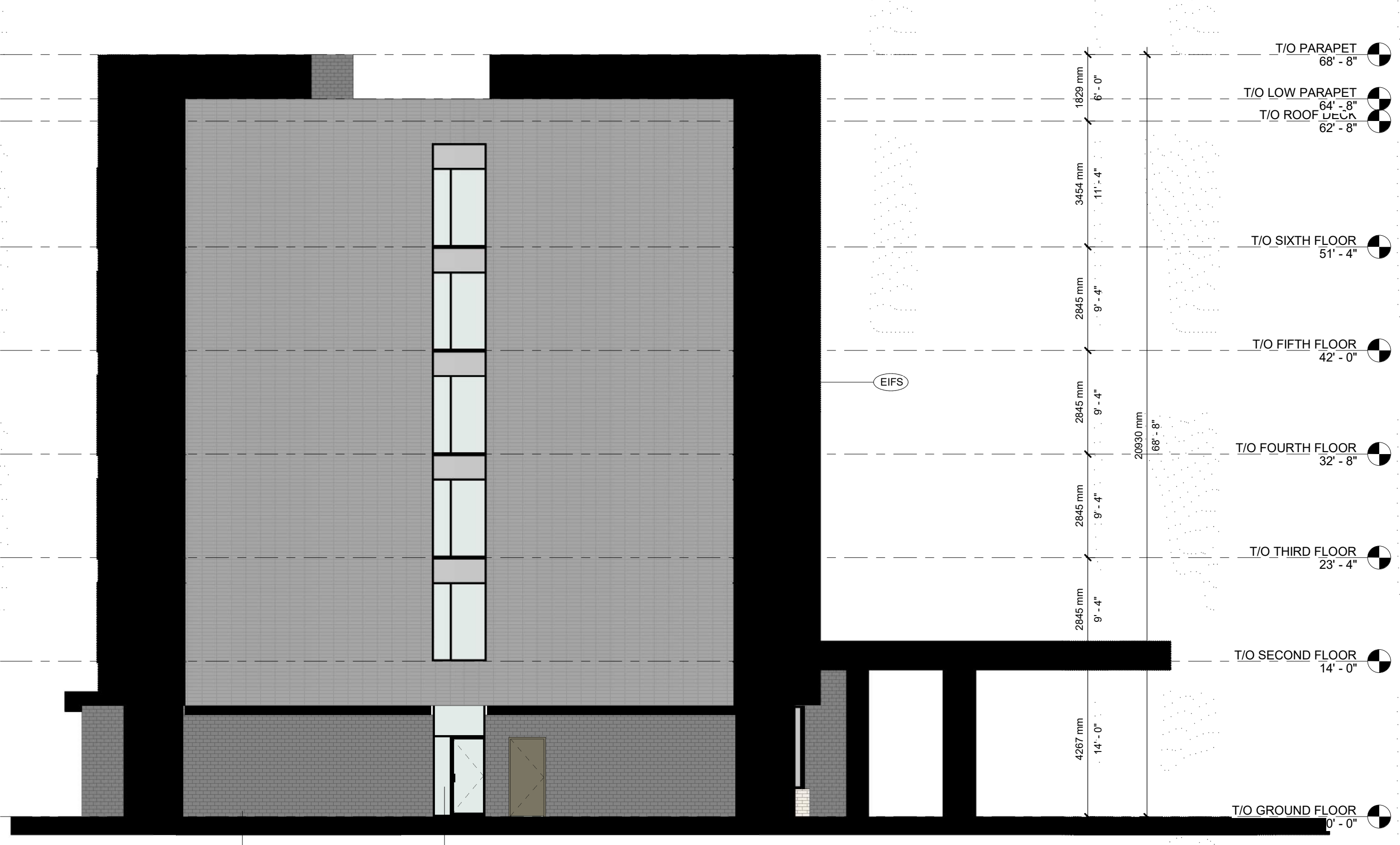
START DATE	16 SEPT 2019
DRAWN BY	LGJ + MOR
CHECKED BY	SM
SCALE	1 : 100
PROJECT NO.	117079

DRAWING
A202



MATERIAL LEGEND
GLZ - GLAZING - CLEAR
WD - EXTERIOR INSULATION PANEL - WOOD FINISH - WALNUT
STK - EXTERIOR INSULATION PANEL - STACKED BRICK FINISH
BLK - EXTERIOR INSULATION PANEL - BLACK FINISH
GRY - EXTERIOR INSULATION PANEL - LIGHT GREY
STN - CHARCOAL STONE
SPN - SPANDREL PANEL

1 SOUTH ELEVATION
A202 1 : 100



2 NORTH ELEVATION
A202 1 : 100



4 Axonometric
A202



3 PERSPECTIVE
A202

C:\Users\semauro\Documents\117079 - Hampton Inn and Suites - Kanata - Building - 2022.01.19_smauro.dwg



FRONT PERSPECTIVE



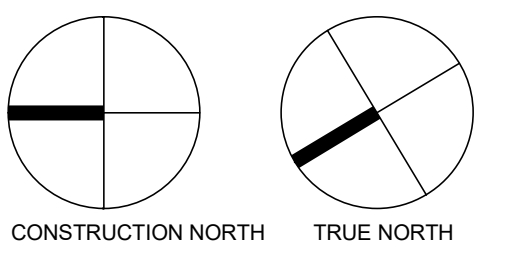
STREET PERSPECTIVE



Chamberlain Architect Services Limited
 4871 Palladium Way (Unit 1)
 Burlington, Ontario, L7M 0W9
 CANADA
 Phone: 905.631.7777
 www.chamberlainPD.com

NO.	ISSUED	DATE
1	SITE PLAN APPROVAL	2022.01.19

DO NOT SCALE DRAWINGS. USE ONLY DRAWINGS MARKED "ISSUED FOR CONSTRUCTION". VERIFY CONFIGURATIONS AND DIMENSIONS ON SITE BEFORE BEGINNING WORK. NOTIFY ARCHITECT IMMEDIATELY OF ANY ERRORS, OMISSIONS OR DISCREPANCIES.
 CHAMBERLAIN ARCHITECT SERVICES LIMITED AND CHAMBERLAIN CONSTRUCTION SERVICES LIMITED HAVE SIMILAR OWNERSHIP.
 CHAMBERLAIN ARCHITECT SERVICES LIMITED HAS COPYRIGHT. CONSTRUCTING A SUBSTANTIALLY SIMILAR BUILDING WITHOUT PERMISSION MAY INFRINGE THE COPYRIGHT OWNERS RIGHTS. MAKING MINOR CHANGES TO PLANS DOES NOT NECESSARILY AVOID COPYRIGHT INFRINGEMENT. INNOCENT INFRINGEMENT IS NOT A DEFENSE TO COPYRIGHT INFRINGEMENT. ©
 SEAL



KANATA HAMPTON INN

1251 MARITIME WAY,
 KANATA, ON

SHEET NAME

RENDERINGS

START DATE 16 SEPT 2019

DRAWN BY Author

CHECKED BY Checker

SCALE

PROJECT NO. 117079

DRAWING

A203

C:\Users\semauro\Documents\117079 - Hampton Inn and Suites - Kanata - Building - 2022.01.19_smauro.dwg 1/21/2022 4:52:54 PM