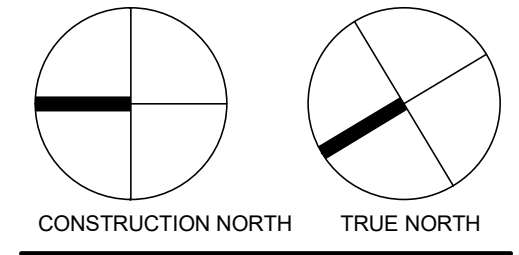


NO.	ISSUED	DATE
1	SITE PLAN APPROVAL	2022 01 19

DO NOT SCALE DRAWINGS. USE ONLY DRAWINGS MARKED "ISSUED FOR CONSTRUCTION". VERIFY CONFIGURATIONS AND DIMENSIONS ON SITE BEFORE BEGINNING WORK. NOTIFY ARCHITECT IMMEDIATELY OF ANY ERRORS, OMISSIONS OR DISCREPANCIES.
CHAMBERLAIN ARCHITECT SERVICES LIMITED AND CHAMBERLAIN CONSTRUCTION SERVICES LIMITED HAVE SIMILAR OWNERSHIP.
CHAMBERLAIN ARCHITECT SERVICES LIMITED HAS COPYRIGHT, CONSTRUCTING A SUBSTANTIALLY SIMILAR BUILDING WITHOUT PERMISSION MAY INFRINGE THE COPYRIGHT OWNERS RIGHTS. MAKING MINOR CHANGES TO PLANS DOES NOT NECESSARILY AVOID COPYRIGHT INFRINGEMENT. INNOCENT INFRINGEMENT IS NOT A DEFENSE TO COPYRIGHT INFRINGEMENT. ©
SEAL



KANATA HAMPTON INN

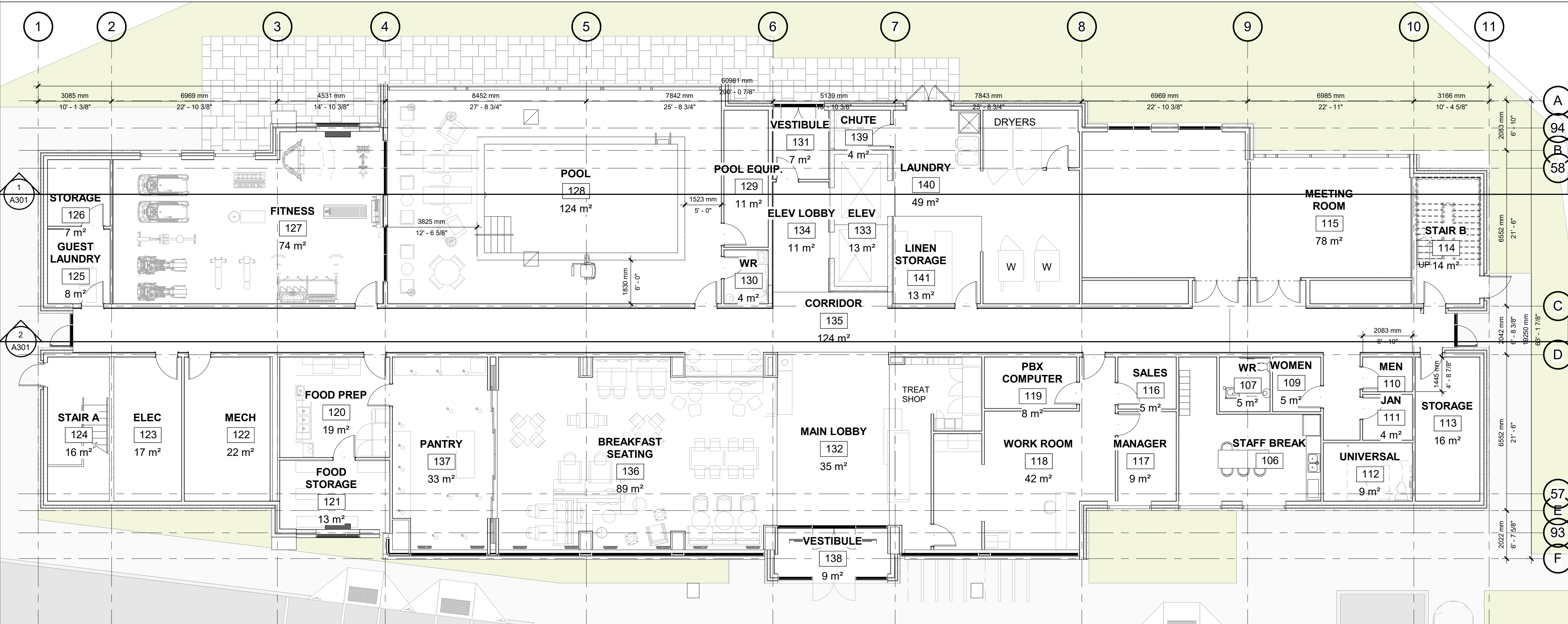
1251 MARITIME WAY,
KANATA, ON

SHEET NAME

OVERALL FLOOR PLANS 1

START DATE	16 SEPT 2019
DRAWN BY	LGJ + MOR
CHECKED BY	SM
SCALE	1 : 100
PROJECT NO.	117079

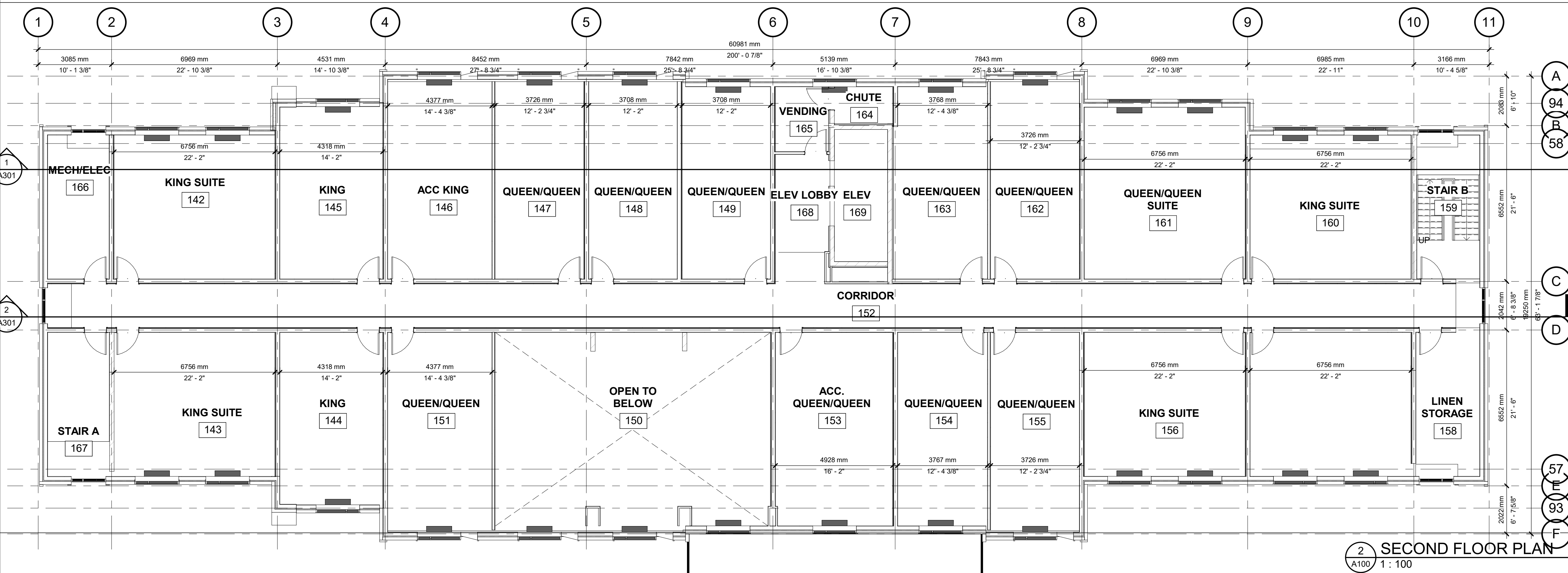
DRAWING A100



1 GROUND FLOOR PLAN
A100 1 : 100

ROOM MATRIX		
NAME	Count	
T/O SECOND FLOOR		
ACC KING	1	
ACC. QUEEN/QUEEN	1	
KING	2	
KING SUITE	4	
QUEEN/QUEEN	8	
QUEEN/QUEEN SUITE	1	
	17	
T/O THIRD FLOOR		
ACC KING	1	
ACC. QUEEN/QUEEN	1	
KING	2	
KING SUITE	5	
QUEEN/QUEEN	11	
QUEEN/QUEEN SUITE	1	
	21	
T/O FOURTH FLOOR		
ACC KING	1	
ACC. QUEEN/QUEEN	1	
KING	2	
KING SUITE	5	
QUEEN/QUEEN	11	
QUEEN/QUEEN SUITE	1	
	21	
T/O FIFTH FLOOR		
ACC KING	1	
ACC. QUEEN/QUEEN	1	
KING	2	
KING SUITE	5	
QUEEN/QUEEN	11	
QUEEN/QUEEN SUITE	1	
	21	
T/O SIXTH FLOOR		
ACC KING	1	
ACC. QUEEN/QUEEN	1	
KING	2	
KING SUITE	5	
QUEEN/QUEEN	11	
QUEEN/QUEEN SUITE	1	
	21	
Grand total	101	

BUILDING AEA	
Level	Area
T/O GROUND FLOOR	1021 m ²
T/O SECOND FLOOR	954 m ²
T/O THIRD FLOOR	954 m ²
T/O FOURTH FLOOR	954 m ²
T/O FIFTH FLOOR	954 m ²
T/O SIXTH FLOOR	954 m ²
Grand total	5791 m²

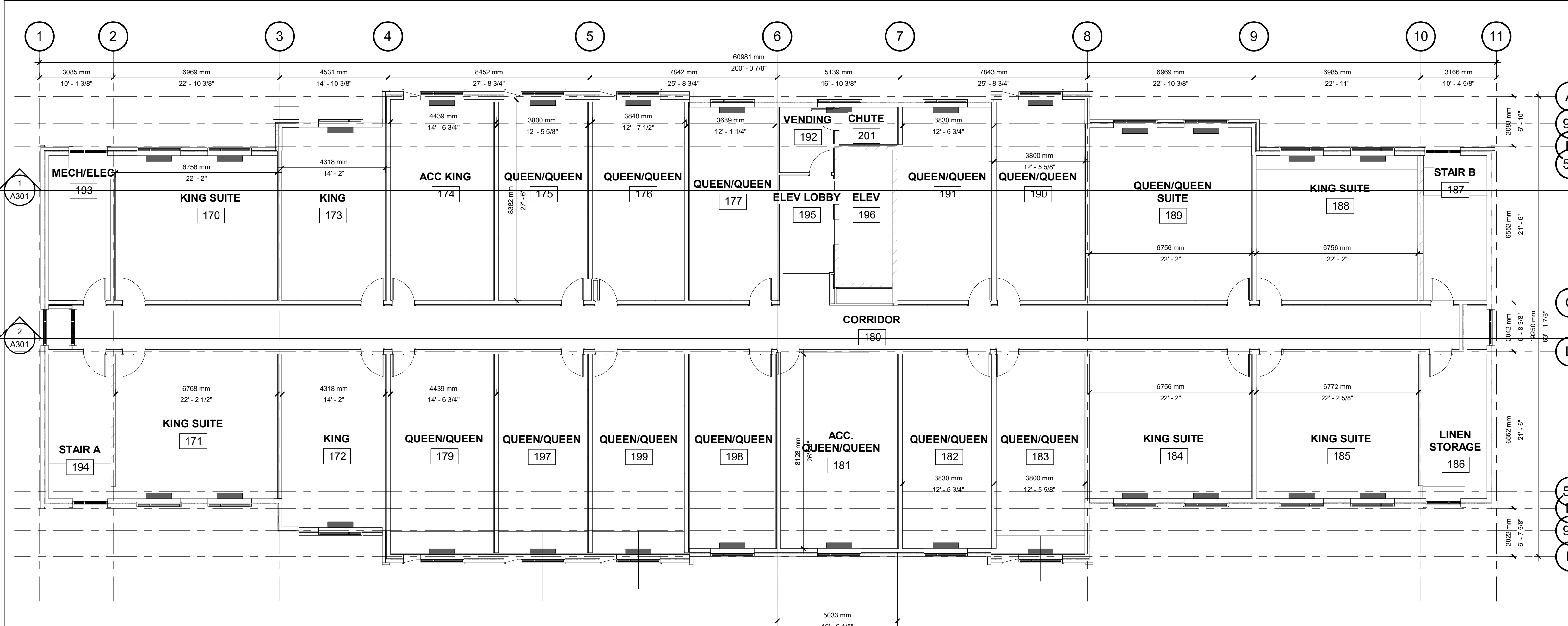


2 SECOND FLOOR PLAN
A100 1 : 100

ROOM SCHEDULE		
NAME	Count	ROOM COUNT PERCENTAGE
ACC KING	5	5%
ACC. QUEEN/QUEEN	5	5%
KING	10	8%
KING SUITE	24	33%
QUEEN/QUEEN	52	42%
QUEEN/QUEEN SUITE	5	6%
Grand total	101	

6092 SQM

C:\Users\mario\Documents\117079 - Hampton Inn and Suites - Kanata - Building - 2022 01 13_sma.docx



1 THIRD FLOOR PLAN
A101 1 : 100

ROOM MATRIX	
NAME	Count
T/O SECOND FLOOR	
ACC KING	1
ACC. QUEEN/QUEEN	1
KING	2
KING SUITE	4
QUEEN/QUEEN	8
QUEEN/QUEEN SUITE	1
	17
T/O THIRD FLOOR	
ACC KING	1
ACC. QUEEN/QUEEN	1
KING	2
KING SUITE	5
QUEEN/QUEEN	11
QUEEN/QUEEN SUITE	1
	21
T/O FOURTH FLOOR	
ACC KING	1
ACC. QUEEN/QUEEN	1
KING	2
KING SUITE	5
QUEEN/QUEEN	11
QUEEN/QUEEN SUITE	1
	21
T/O FIFTH FLOOR	
ACC KING	1
ACC. QUEEN/QUEEN	1
KING	2
KING SUITE	5
QUEEN/QUEEN	11
QUEEN/QUEEN SUITE	1
	21
T/O SIXTH FLOOR	
ACC KING	1
ACC. QUEEN/QUEEN	1
KING	2
KING SUITE	5
QUEEN/QUEEN	11
QUEEN/QUEEN SUITE	1
	21
Grand total	101

ROOM SCHEDULE		
NAME	Count	ROOM COUNT PERCENTAGE
ACC KING	5	5%
ACC. QUEEN/QUEEN	5	5%
KING	10	8%
KING SUITE	24	33%
QUEEN/QUEEN	52	42%
QUEEN/QUEEN SUITE	5	6%
Grand total	101	

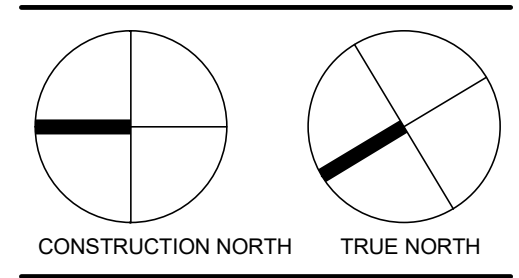
BUILDING AEA	
Level	Area
T/O GROUND FLOOR	1021 m ²
T/O SECOND FLOOR	954 m ²
T/O THIRD FLOOR	954 m ²
T/O FOURTH FLOOR	954 m ²
T/O FIFTH FLOOR	954 m ²
T/O SIXTH FLOOR	954 m ²
Grand total	5791 m ²



Chamberlain Architect Services Limited
4871 Palladium Way (Unit 1)
Burlington, Ontario, L7M 0W9
CANADA
Phone: 905.631.7777
www.chamberlainIPD.com

NO.	ISSUED	DATE
1	SITE PLAN APPROVAL	2022.01.19

DO NOT SCALE DRAWINGS. USE ONLY DIMENSIONS MARKED "ISSUED FOR CONSTRUCTION". VERIFY CONFIGURATIONS AND DIMENSIONS ON SITE BEFORE BEGINNING WORK. NOTIFY ARCHITECT IMMEDIATELY OF ANY ERRORS, OMISSIONS OR DISCREPANCIES.
CHAMBERLAIN ARCHITECT SERVICES LIMITED AND CHAMBERLAIN CONSTRUCTION SERVICES LIMITED HAVE SIMILAR OWNERSHIP.
CHAMBERLAIN ARCHITECT SERVICES LIMITED HAS COPYRIGHT, CONSTRUCTING A SUBSTANTIALLY SIMILAR BUILDING WITHOUT PERMISSION MAY INFRINGE THE COPYRIGHT OWNERS RIGHTS. MAKING MINOR CHANGES TO PLANS DOES NOT NECESSARILY AVOID COPYRIGHT INFRINGEMENT. INNOCENT INFRINGEMENT IS NOT A DEFENSE TO COPYRIGHT INFRINGEMENT. © SEAL



KANATA HAMPTON INN

1251 MARITIME WAY,
KANATA, ON

SHEET NAME

OVERALL FLOOR PLAN 2

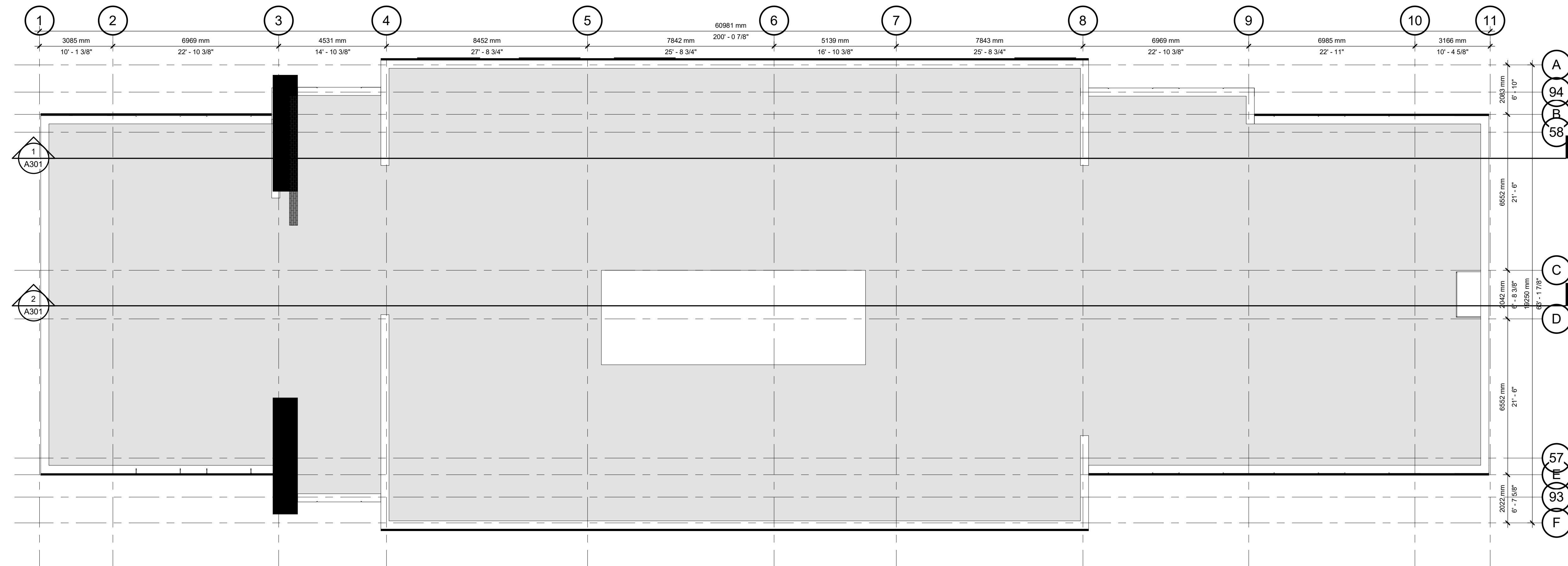
START DATE	16 SEPT 2019
DRAWN BY	LGJ + MOR
CHECKED BY	SM
SCALE	1 : 100
PROJECT NO.	117079

DRAWING

A101

C:\Users\seanr\Documents\117079 - Hampton Inn and Suites - Kanata - Building - 2022.01.19_sma\apd.dwg 1/21/2022 4:52:40 PM

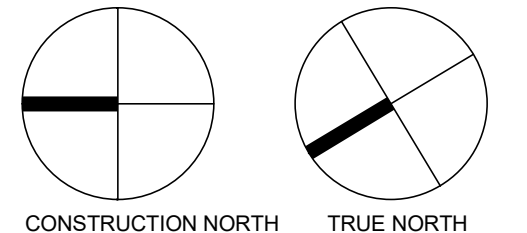
NO.	ISSUED	DATE
1	SITE PLAN APPROVAL	2022.01.19



DO NOT SCALE DRAWINGS. USE ONLY DRAWINGS MARKED "ISSUED FOR CONSTRUCTION". VERIFY CONFIGURATIONS AND DIMENSIONS ON SITE BEFORE BEGINNING WORK. NOTIFY ARCHITECT IMMEDIATELY OF ANY ERRORS, OMISSIONS OR DISCREPANCIES.

CHAMBERLAIN ARCHITECT SERVICES LIMITED AND CHAMBERLAIN CONSTRUCTION SERVICES LIMITED HAVE SIMILAR OWNERSHIP.

CHAMBERLAIN ARCHITECT SERVICES LIMITED HAS COPYRIGHT. CONSTRUCTING A SUBSTANTIALLY SIMILAR BUILDING WITHOUT PERMISSION MAY INFRINGE THE COPYRIGHT OWNERS RIGHTS. MAKING MINOR CHANGES TO PLANS DOES NOT NECESSARILY AVOID COPYRIGHT INFRINGEMENT. INNOCENT INFRINGEMENT IS NOT A DEFENSE TO COPYRIGHT INFRINGEMENT. © SEAL



**KANATA HAMPTON
INN**

1251 MARITIME WAY,
KANATA, ON

SHEET NAME

**ROOF PLAN &
DETAILS**

START DATE	16 SEPT 2019
DRAWN BY	Author
CHECKED BY	Checker
SCALE	1 : 100
PROJECT NO.	117079

DRAWING

A105

1 ROOF PLAN
A105 1 : 100

C:\Users\sema\Documents\117079 - Hampton Inn and Suites - Kanata - Building - 2022.01.19_smaarop.dwg 1/21/2022 4:52:41 PM