

(LOCALLY KNOWN AS RIVER ROAD)

BLOCK 209
0.30 RESERVE

croissant Lunar Glow Crescent

4M - 1641

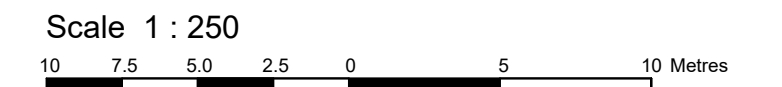
I REQUIRE THIS PLAN TO BE DEPOSITED UNDER THE LAND TITLES ACT.
DATE: _____

PLAN 4R-
RECEIVED AND DEPOSITED
DATE: _____

T. HARTWICK
ONTARIO LAND SURVEYOR

REPRESENTATIVE FOR
LAND REGISTRAR FOR THE
LAND TITLES DIVISION OF
OTTAWA-CARLETON NO. 4.

PLAN OF SURVEY OF
BLOCK 196
REGISTERED PLAN 4M-1641
CITY OF OTTAWA
Surveyed by Annis, O'Sullivan, Vollebek Ltd.



Metric
DISTANCES AND COORDINATES SHOWN ON THIS PLAN ARE IN METRES AND CAN BE CONVERTED TO FEET BY DIVIDING BY 0.3048.

Surveyor's Certificate
I CERTIFY THAT:
1. This survey and plan are correct and in accordance with the Surveys Act, the Surveyors Act and the Land Titles Act and the regulations made under them.
2. The survey was completed on the ___ day of _____, 2022.

Date _____ T. Hartwick
Ontario Land Surveyor

- Notes & Legend
- Denotes Survey Monument Planted
 - Denotes Survey Monument Found
 - SIB Standard Iron Bar
 - SSIB Short Standard Iron Bar
 - IB Iron Bar
 - (WIT) Witness
 - (AOG) Annis, O'Sullivan, Vollebek Ltd.
 - Meas. Measured
 - (P1) Plan

Distances shown on this plan are ground distances and can be converted to grid distances by multiplying by the combined scale factor of 0.9999xx.

Bearings are grid, derived from Can-Net 2016 Real Time Network GPS observations on reference points A and B, shown hereon, having a bearing of Nxx°xx'xx"W and are referenced to Specified Control Points 0191971338 and 01919871649, MTM Zone 9 (76°30' West Longitude) NAD-83 (original).

For bearing comparisons, a rotation of 0°00'00" counter-clockwise was applied to bearings on plan

For comparison purposes, bearings shown on Plans P1 ... are astronomic bearings.

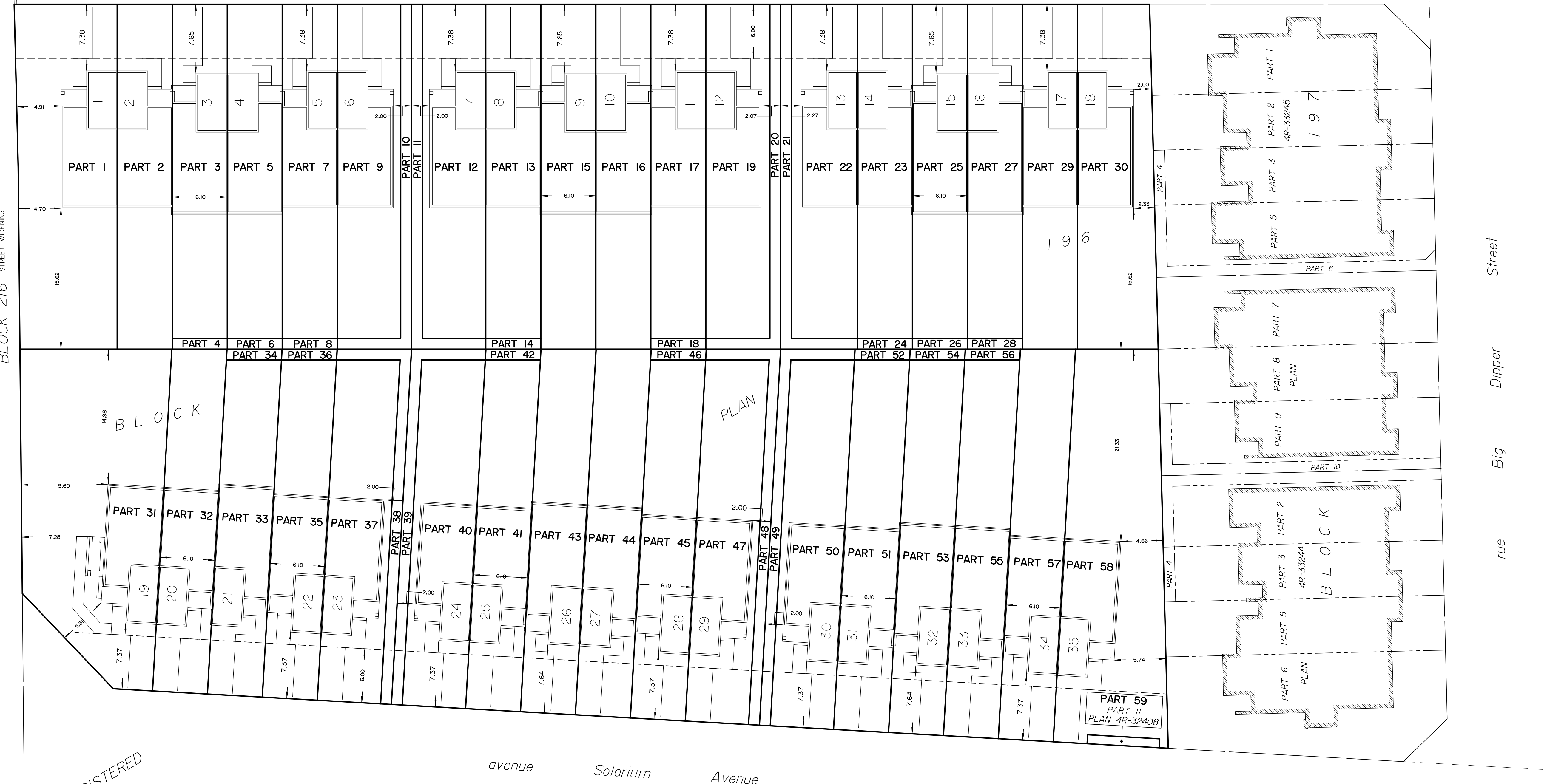
Coordinates are derived from Can-Net 2016 Real Time Network GPS observations referenced to Specified Control Points 0191971338 and 01919871649, MTM Zone 9 (76°30' West Longitude) NAD-83 (original).

Coordinate values are to urban accuracy in accordance with O. Reg. 216/10.

. 0191971338	Northing	5006055.96	Easting	346140.91
. 01919871649	Northing	5007189.87	Easting	372435.05
. Point A	Northing		Easting	
. Point B	Northing		Easting	

Caution: Coordinates cannot, in themselves, be used to re-establish corners or boundaries shown on this plan.

ANNIS, O'SULLIVAN, VOLLEBEK LTD.
14 Concourse Gate, Suite 500
Nepean, Ont. K2E 7S6
Phone: (613) 727-0850 / Fax: (613) 727-1079
Email: Nepean@aosvl.com



REGISTERED

Y:\URBAN\EN\165603\2176-22_RSDC_Phase1-1_Bk196_4M-1641_R_D2.dwg