

LEGEND

FFL	FINISHED FLOOR ELEVATION
TOF	TOP OF FOUNDATION
BFL	BASEMENT FLOOR ELEVATION
USF	UNDERSIDE OF FOOTING
---	PROPERTY LINE
CB	CATCH-BASIN
MH	STORM MANHOLE
CB/MH	CATCH-BASIN/MANHOLE
MH	SANITARY MANHOLE
VC	VALVE CHAMBER
FH	FIRE HYDRANT
CS	CURB STOP & STANDPOST
SAN	SANITARY SEWER
ST	STORM SEWER
WS/MM	WATER SERVICE/WATERMAIN
SPL	SPRINGLINE OF PIPE
INV	INVERT OF PIPE
+99.99	EXISTING GRADE ELEVATION
---	150mm BARRIER CURB

KEY PLAN

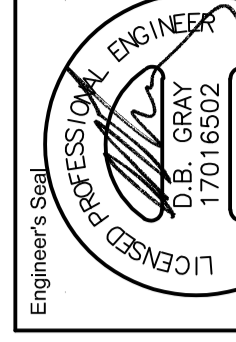


No.	DATE	REVISION
2	JUN 2-22	ISSUED FOR APPROVAL
1	MAY 16-22	ISSUED FOR COORDINATION

D.B. GRAY ENGINEERING INC.
 Professional Engineer
 700 Long Point Circle
 Ottawa, Ontario
 d.gray@dbgrayengineering.com
 613-425-8044

Project
EXHALO SPA
 3150 WOODROFFE AVENUE
 OTTAWA, ONTARIO

SITE SERVICING PLAN

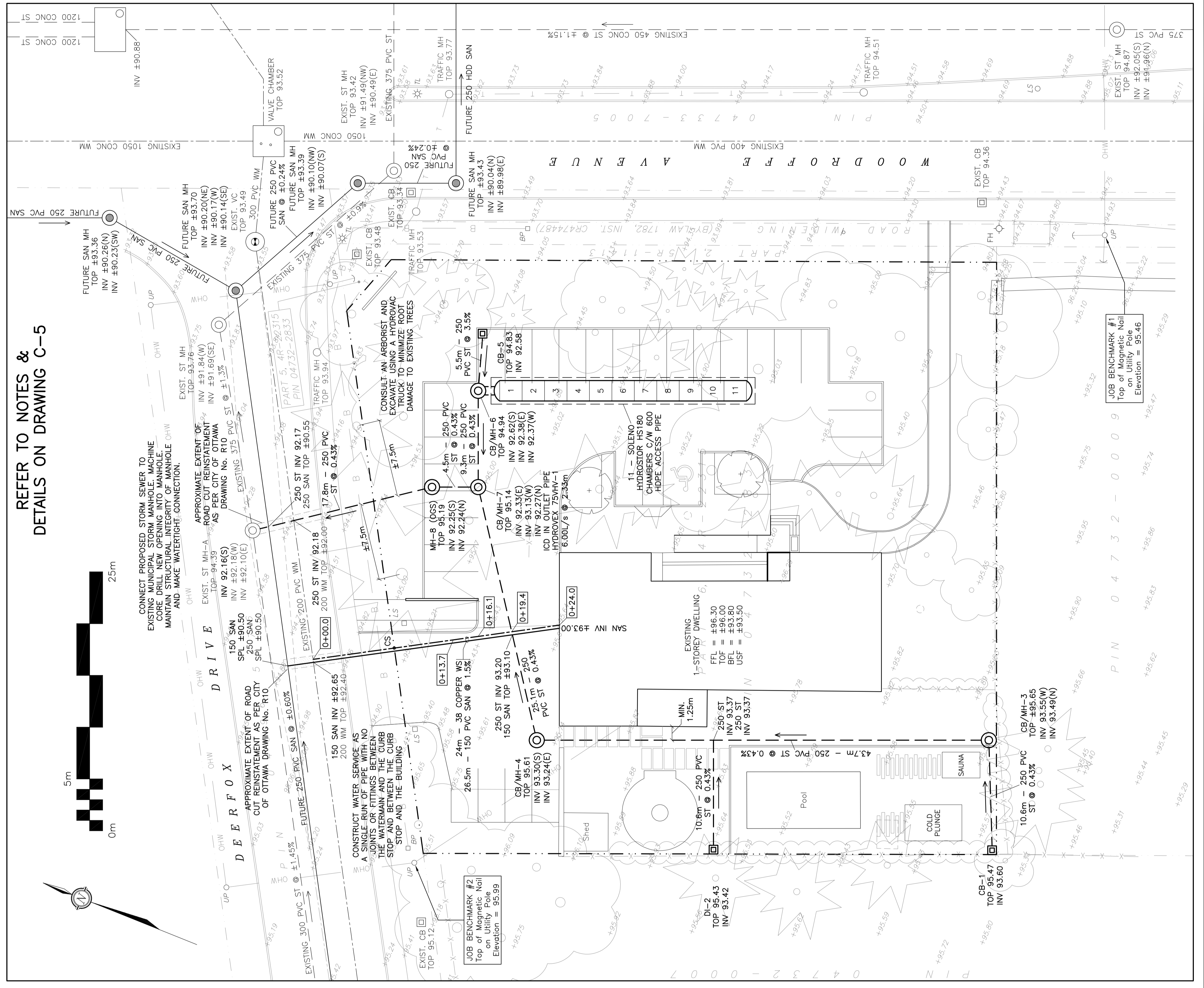


Drawn: D.B.G.
 H. Scale: 1:200
 V. Scale: 1:200
 Date: MAR 21-22
 Job No.: 22017

Drawing No.:
C-1
 of 7

NOT VALID UNLESS SIGNED & DATED

REFER TO NOTES & DETAILS ON DRAWING C-5



CATCH-BASIN & MANHOLE SCHEDULE

REF	TOP	SIZE	TYPE	INVERT AT INLET	INVERT AT OUTLET	NOTES
CB-1	95.47	600mm x 600mm	PRE-CAST CONCRETE CATCH-BASIN	-	93.60	TO OPSD 705.010 & CITY OF OTTAWA STANDARDS - FRAME & COVER TO CITY OF OTTAWA DRAWING No. S19
DI-1	95.43	600mm x 600mm	PRE-CAST CONCRETE DITCH INLET	-	93.42	TO OPSD 705.030 & CITY OF OTTAWA STANDARDS - GRATE TO OPSD 402.010 3:1 SLOPE
CB/MH-3	±95.65	1200mm	PRE-CAST CONCRETE CATCH-BASIN/MANHOLE	93.55(W)	93.49(N)	TO OPSD 701.010 & CITY OF OTTAWA STANDARDS - FRAME & COVER TO CITY OF OTTAWA DRAWING No. S28.1 OR OPSD 401.010
CB/MH-4	95.61	1200mm	PRE-CAST CONCRETE CATCH-BASIN/MANHOLE	93.30(S)	93.24(E)	TO OPSD 701.010 & CITY OF OTTAWA STANDARDS - FRAME & COVER TO CITY OF OTTAWA DRAWING No. S28.1 OR OPSD 401.010
CB-5	94.83	600mm x 600mm	PRE-CAST CONCRETE CATCH-BASIN	-	92.58	TO OPSD 705.010 & CITY OF OTTAWA STANDARDS - FRAME & COVER TO CITY OF OTTAWA DRAWING No. S19
CB/MH-6	94.94	1200mm	PRE-CAST CONCRETE CATCH-BASIN/MANHOLE	92.62(S) 92.38(E)	92.37(W)	TO OPSD 701.010 & CITY OF OTTAWA STANDARDS - FRAME & COVER TO CITY OF OTTAWA DRAWING No. S28.1 OR OPSD 401.010
CB/MH-7	95.14	1200mm	PRE-CAST CONCRETE CATCH-BASIN/MANHOLE	92.33(E) 93.13(W)	92.27(N)	TO OPSD 701.010 & CITY OF OTTAWA STANDARDS - FRAME & COVER TO CITY OF OTTAWA DRAWING No. S28.1 OR OPSD 401.010
MH-8	95.19	CDS PMSU2015-4	PRE-CAST CONCRETE MANHOLE	92.25(S)	92.24(N)	TO OPSD 701.010 & CITY OF OTTAWA STANDARDS - FRAME & COVER TO CITY OF OTTAWA DRAWING No. S28.1 OR OPSD 401.010

WATER SERVICE PROFILE TABLE

MATERIAL:
 38mm COPPER ASTM B88 TYPE "K" SOFT

STATION	DESCRIPTION	GRADE ELEVATION	TOP OF PIPE	DEPTH OF COVER	NOTES
0+00.0	CONNECTION TO 200mm MUNICIPAL WATERMAIN	±94.80	±92.40	±2.40	-
0+02.7	-	±94.72	±92.32	2.40	BOTTOM OF CURB
0+04.7	-	94.82	92.42	2.40	BACK OF SIDEWALK
0+06.6	-	94.95	92.55	2.40	CROSSING BELL
0+07.9	38mm CURB STOP & SERVICE POST	95.00	92.60	2.40	ON PROPERTY LINE
0+13.7	-	95.30	92.90	2.40	-
0+16.1	-	95.44	92.90	2.54	-
0+19.4	-	95.53	92.99	2.54	250 ST INV 93.20 38 WS TOP 92.99
0+20.8	-	95.57	93.00	2.57	START OF INSULATION AT OPEN STRUCTURE: 125mm THICK
0+24.0	-	95.67	93.04	2.63	ENTRY INTO BUILDING