

REMOVALS LEGEND:

- CRITICAL ROOT ZONE (CRZ)
- EXISTING DECIDUOUS TREE
- EXISTING CONIFEROUS TREE
- TREE TO BE REMOVED
- TREE PROTECTION

REFER TO TREE CONSERVATION REPORT PREPARED BY IFS ASSOCIATES, DATED MAY 17, 2022.

Key Plan

No.	Revision	Date
1	ISSUED FOR SPA	24/05/2022

North:

Stamp:

CSW

Landscape Architecture
Urban Design
Site Planning
Recreation and Park Planning
Project Management

319 McRae Avenue, Suite 502, Ottawa, Ontario, K1Z 0B9
Tel: (613) 729-4536

- All measurements in millimeters unless specified otherwise. Do not scale drawing. All drawings to be read in conjunction with written specifications.
- Copyright reserved. This drawing is the exclusive property of CSW Landscape Architects Ltd. and shall not be used without the consent thereof.
- This Drawing may not be used for construction until signed by the landscape architect. It is the responsibility of the contractor to:
 - check and verify all dimensions on site;
 - report all errors and/or omissions to the landscape architect;
 - comply with all pertinent codes and by-laws;
 - check and verify locations of all underground services with all local utilities prior to any digging.

Project:

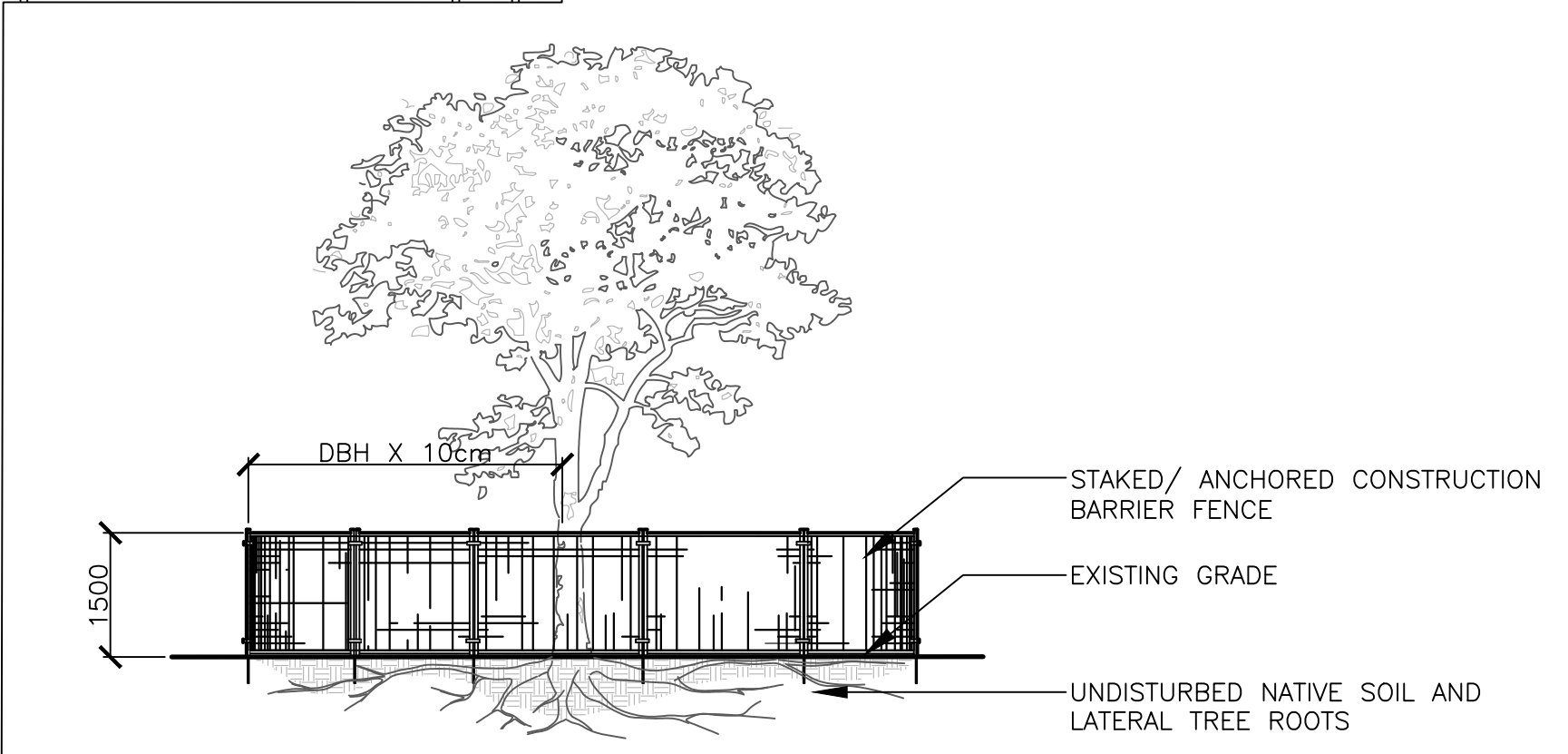
EXHALO SPA

3150 WOODROFFE AVENUE
OTTAWA, ONTARIO

Drawing:

REMOVALS PLAN

Scale:	1:150	Date:	MAY 2, 2022
Design By:	AB	Drawn By:	AB
Project Number:	2127-01	Sheet Number:	L 1.1



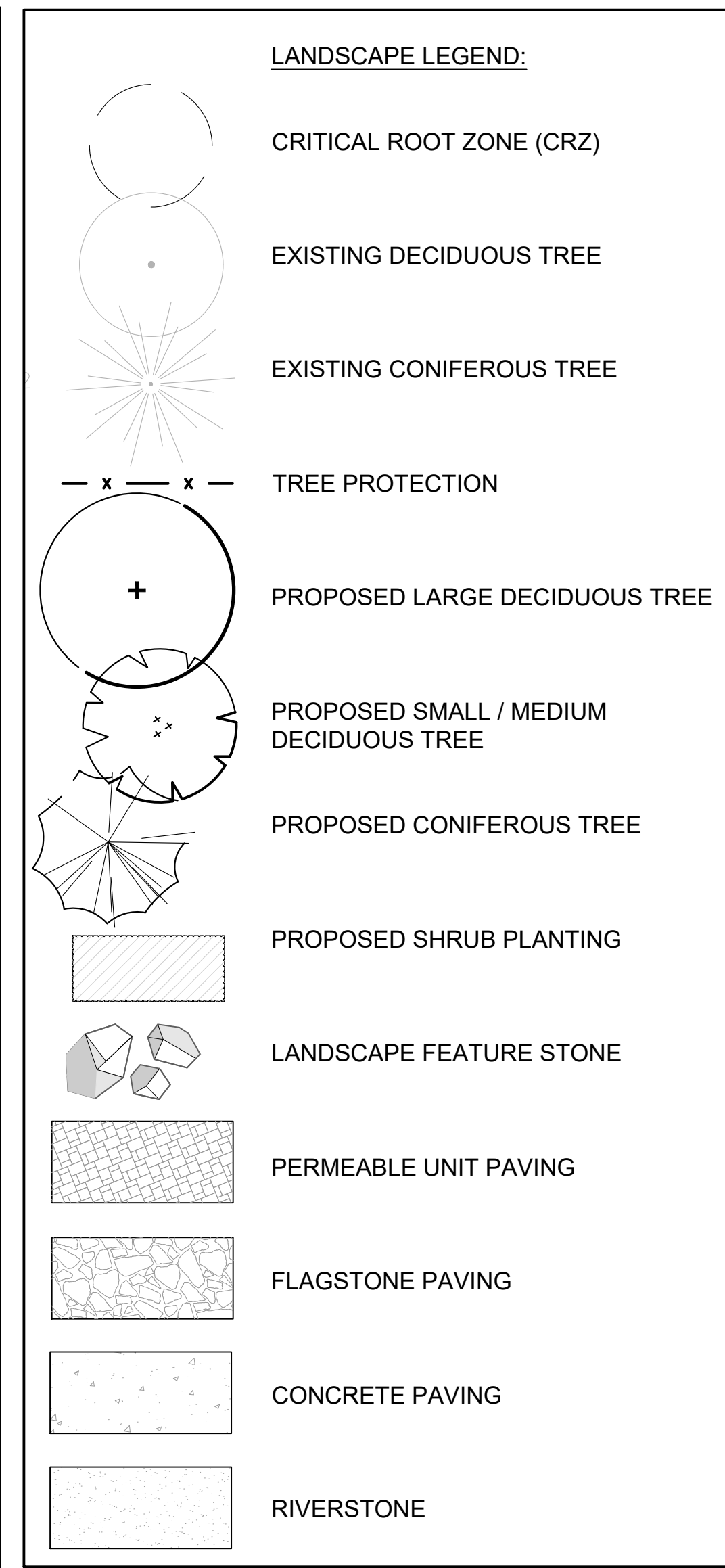
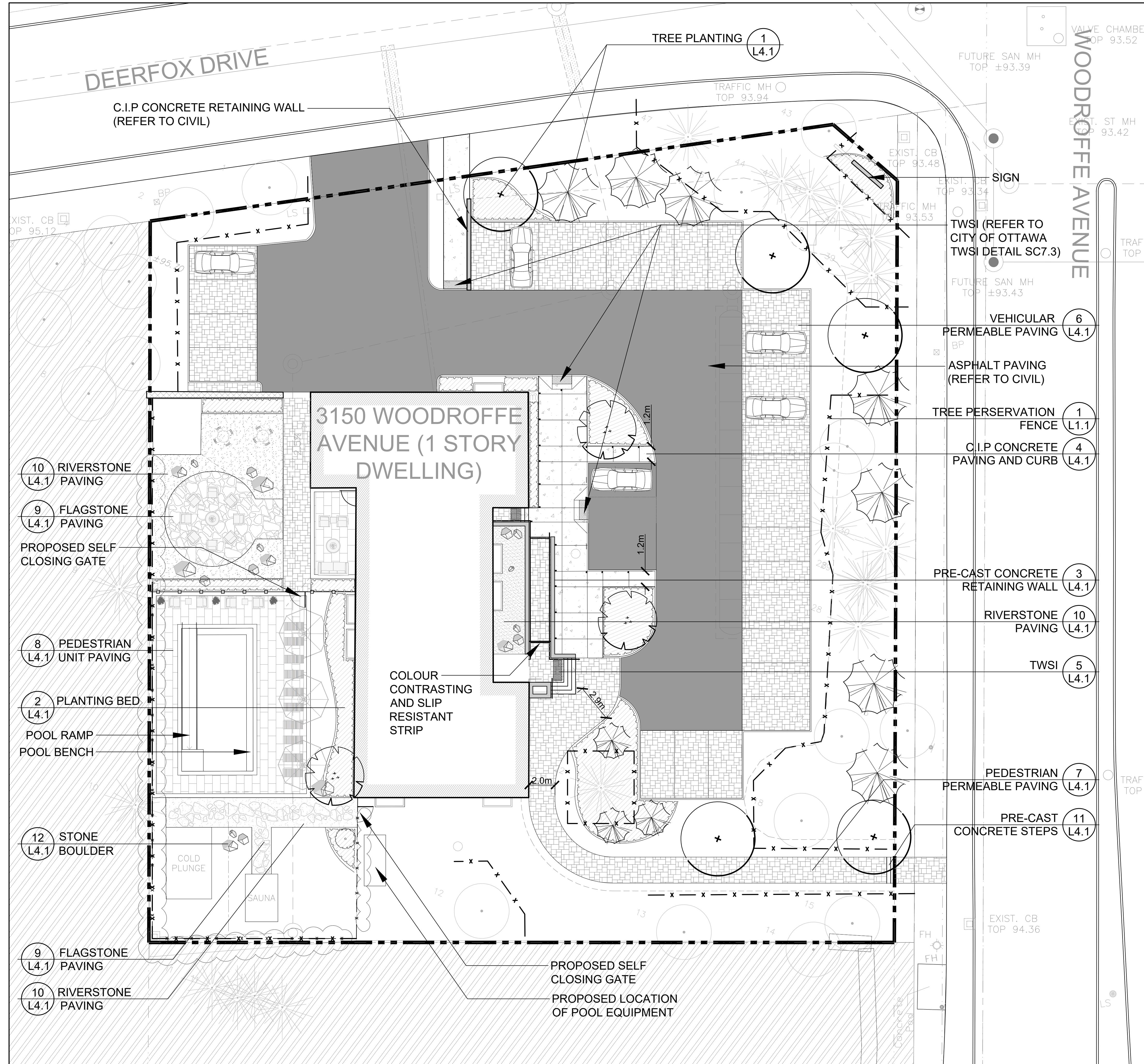
- NOTES:**
- THE FOLLOWING PROTECTION MEASURES MUST BE IMPLEMENTED FOR RETAINED TREES, BOTH ON SITE AND ADJACENT SITES, PRIOR TO ANY TREE REMOVAL OR SITE WORKS AND MAINTAINED FOR THE DURATION OF CONSTRUCTION ON SITE.
- UNDER THE GUIDANCE OF AN ARBORIST, ERECT A FENCE AT THE CRITICAL ROOT ZONE (CRZ) OF TREES WHERE THE CRZ IS ESTABLISHED AS BEING 10 CENTIMETERS FROM THE TRUNK FOR EVERY CENTIMETER OF TRUNK DIAMETER AT BREAST HEIGHT. THE CRZ IS CALCULATED AS DBH X 10cm.
 - DO NOT PLACE ANY MATERIAL OR EQUIPMENT WITHIN THE CRZ OF THE TREE
 - DO NOT ATTACH ANY SIGNS, NOTICES OR POSTERS TO ANY TREE
 - DO NOT RAISE OR LOWER THE GRADE WITHIN THE CRZ WITHOUT APPROVAL
 - TUNNEL OR BORE WHEN DIGGING WITHIN THE CRZ OF A TREE
 - DO NOT DAMAGE THE ROOT SYSTEM, TRUNK, OR BRANCHES OR ANY TREE
 - ENSURE THAT EXHAUST FUMES FROM ALL EQUIPMENT ARE NOT DIRECTED TOWARDS ANY TREE CANOPY

1 TREE PROTECTION FENCING

Scale: 1:30
40 Meters

Last Save: 2022-05-24 3:59:29 PM
 File Location: Z:\Projects\2127-01_Exhalo Spa\Drawings\SPA\2127-01_Exhalo Spa_SPALANDSCAPE.dwg

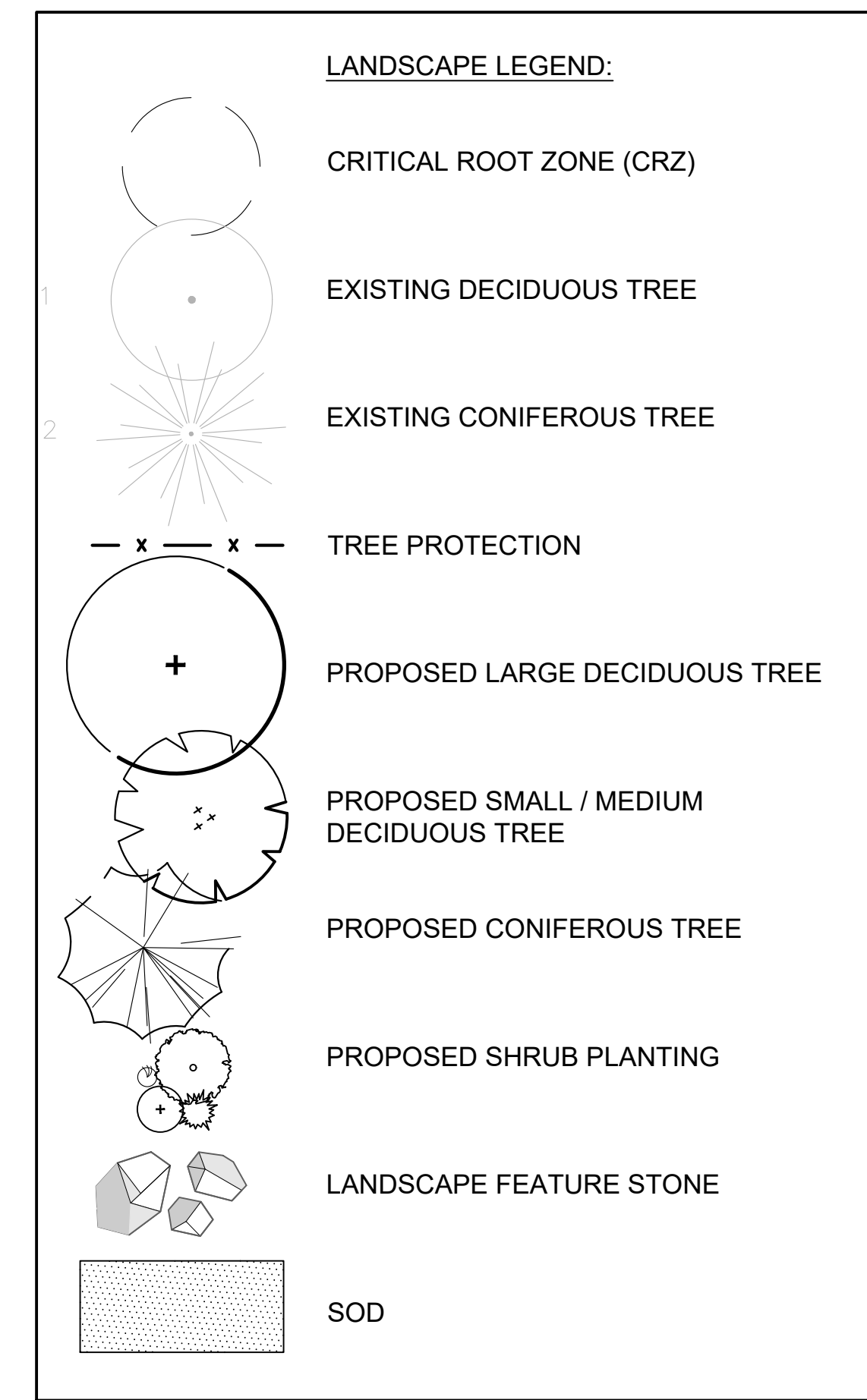
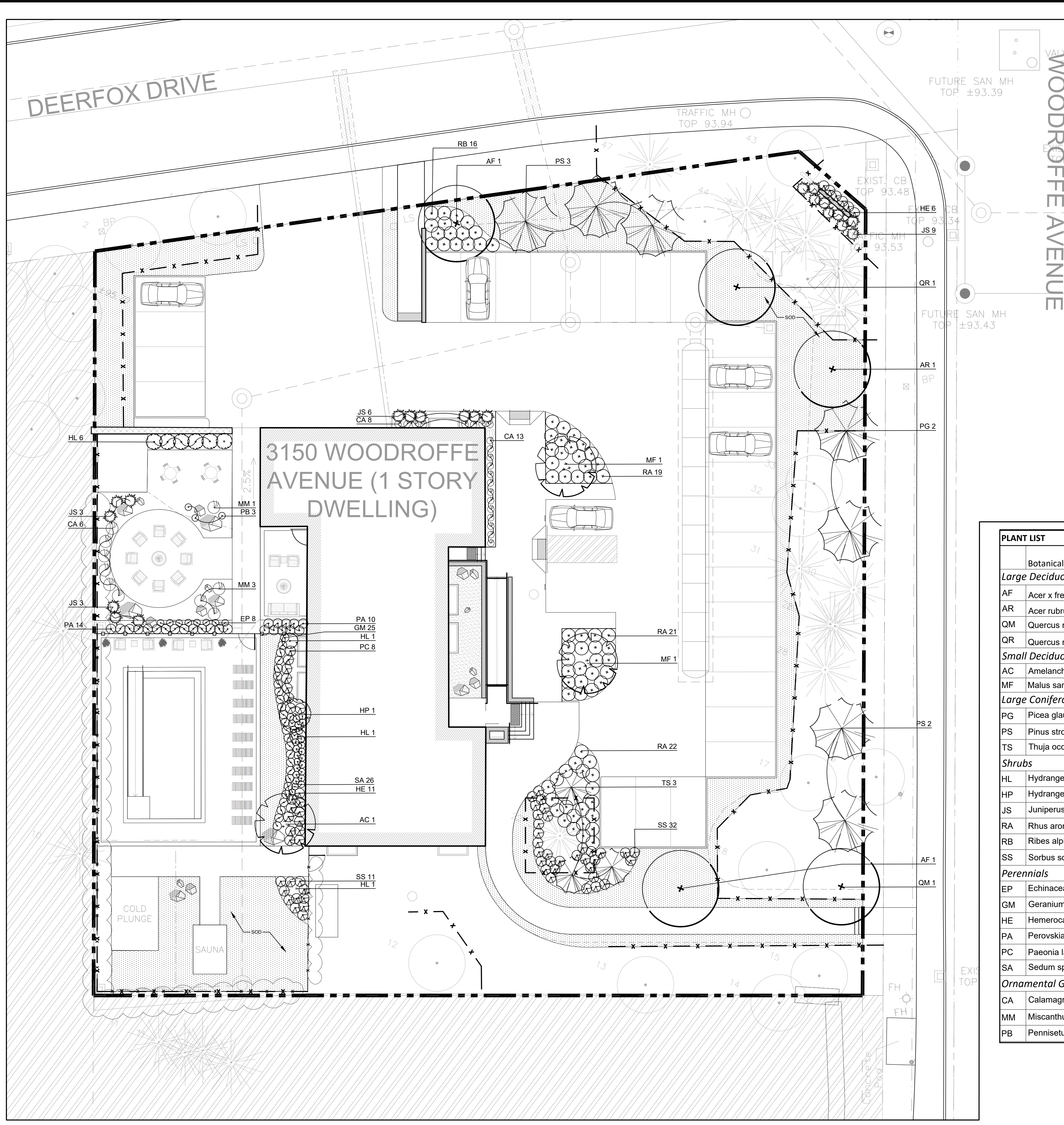
Last Save: 2022-05-24 3:59:29 PM
 File Location: Z:\Projects\2127-01_Exhalo Spa\SPALANDSCAPE.dwg



Key Plan

1 No.	ISSUED FOR SPA Revision	24/05/2022 Date
North:	Stamp:	
Landscape Architecture Urban Design Site Planning Recreation and Park Planning Project Management		
319 McRae Avenue, Suite 502, Ottawa, Ontario, K1Z 0B9 Tel: (613) 729-4536		
1. All measurements in millimeters unless specified otherwise. Do not scale drawing. All drawings to be read in conjunction with written specifications.		
2. Copyright reserved. This drawing is the exclusive property of CSW Landscape Architects Ltd. and shall not be used without the consent thereof.		
3. This Drawing may not be used for construction until signed by the landscape architect. It is the responsibility of the contractor to: <ul style="list-style-type: none"> • check and verify all dimensions on site; • report all errors and/or omissions to the landscape architect; • comply with all pertinent codes and by-laws; • check and verify locations of all underground services with all local utilities prior to any digging. 		
Project: <h2 style="margin: 0;">EXHALO SPA</h2> <p style="margin: 0;">3150 WOODROFFE AVENUE OTTAWA, ONTARIO</p>		
Drawing: <h2 style="margin: 0;">LAYOUT PLAN</h2>		
Scale: 1:150	Date: MAY 2, 2022	
Design By: AB	Drawn By: AB	
Project Number: 2127-01	Sheet Number: L 2.1	

Last Save: 2022-05-24 3:59:29 PM
File Location: Z:\Projects\2127-01_Exhalo Spa_SPALANDSCAPE.dwg



PLANT LIST				
	Botanical Name	Common Name	Quantity	Size
Large Deciduous Trees				
AF	Acer x freemanii 'Jeffersred'	Autumn Blaze Freeman Maple	2	70mm CAL. B.B./W.B.
AR	Acer rubrum	Red Maple	1	70mm CAL. B.B./W.B.
QM	Quercus macrocarpa	Burr Oak	1	70mm CAL. B.B./W.B.
QR	Quercus rubra	Red Oak	1	70mm CAL. B.B./W.B.
Small Deciduous Trees				
AC	Amelanchier x grandiflora	Downy Serviceberry	1	1800mm Ht. Multi-stem
MF	Malus sargentii 'Select A PP12621'	Firebird Crabapple	2	50mm CAL. B.B./W.B.
Large Coniferous Trees				
PG	Picea glauca	White Spruce	2	1.8m Ht.
PS	Pinus strobus	Eastern White Pine	5	1.8m Ht.
TS	Thuja occidentalis 'Smaragd'	Emerald Cedar	3	2.0m Ht.
Shrubs				
HL	Hydrangea paniculata 'Little Lime'	Little Lime Hydrangea	9	450mm Ht.
HP	Hydrangea paniculata 'Grandiflora'	PeeGee Hydrangea (Tree)	1	1500mm Ht
JS	Juniperus sabina	Savin Juniper	21	450mm Spr.
RA	Rhus aromatica 'Gro'Low'	Gro-low fragrant sumac	62	450mm Ht.
RB	Ribes alpinum	Alpine Currant	16	400mm Ht.
SS	Sorbus sorbifolia 'Sem'	'Sem' False Spirea	43	450mm Ht.
Perennials				
EP	Echinacea purpurea 'PowWow Wildberry'	PowWow Wildberry' Coneflower	8	1 Gal. Potted
GM	Geranium x magnificum	Cranesbill Geranium	25	1 Gal. Potted
HE	Hemerocallis 'Purple D'Oro'	Purple D'Oro Daylily	17	1 Gal. Potted
PA	Perovskia atriplicifolia	Russian Sage	24	1 Gal. Potted
PC	Paeonia lactiflora 'Coral Charm'	Coral Charm Paeony (early)	8	1 Gal. Potted
SA	Sedum spectabile 'Autumn Joy'	Autumn Joy Sedum	26	1 Gal. Potted
Ornamental Grasses				
CA	Calamagrostis Acutiflora 'Karl Foerster'	Karl Foerster Reed Grass	27	1 Gal. Potted
MM	Miscanthus sinensis 'Morning Light'	Morning Light Maiden Grass	4	2 Gal. Potted
PB	Pennisetum alopecuroides 'Little Bunny'	Little Bunny Dwarf Fountain Grass	3	1 Gal. Potted



Key Plan

1	ISSUED FOR SPA	24/05/2022
No.	Revision	Date

North:

Stamp:

CSW Landscape Architecture
Urban Design
Site Planning
Recreation and Park Planning
Project Management

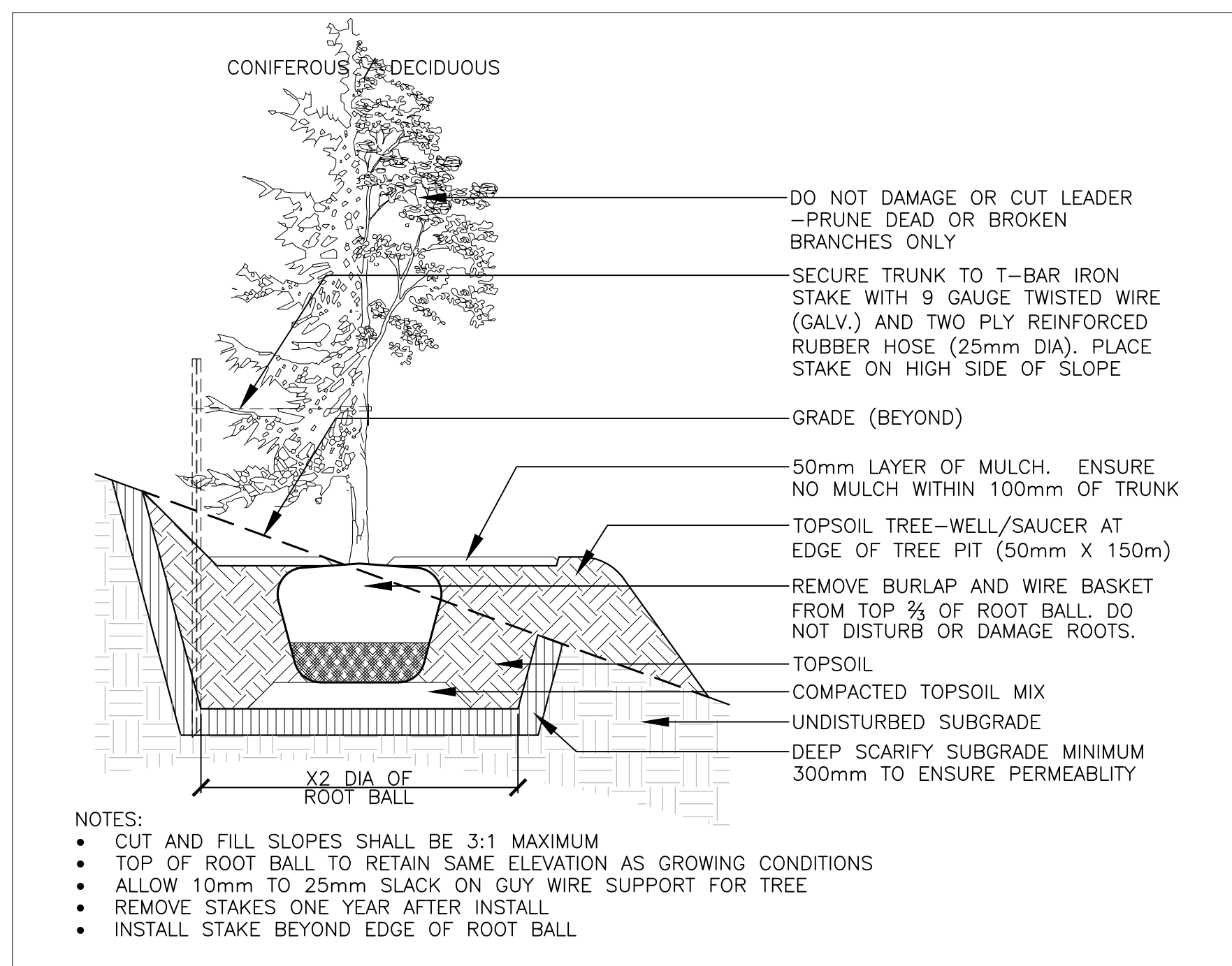
319 McRae Avenue, Suite 502, Ottawa, Ontario, K1Z 0B9
Tel: (613) 729-4536

- All measurements in millimeters unless specified otherwise. Do not scale drawing. All drawings to be read in conjunction with written specifications.
- Copyright reserved. This drawing is the exclusive property of CSW Landscape Architects Ltd. and shall not be used without the consent thereof.
- This Drawing may not be used for construction until signed by the landscape architect. It is the responsibility of the contractor to:
 - check and verify all dimensions on site;
 - report all errors and/or omissions to the landscape architect;
 - comply with all pertinent codes and by-laws;
 - check and verify locations of all underground services with all local utilities prior to any digging.

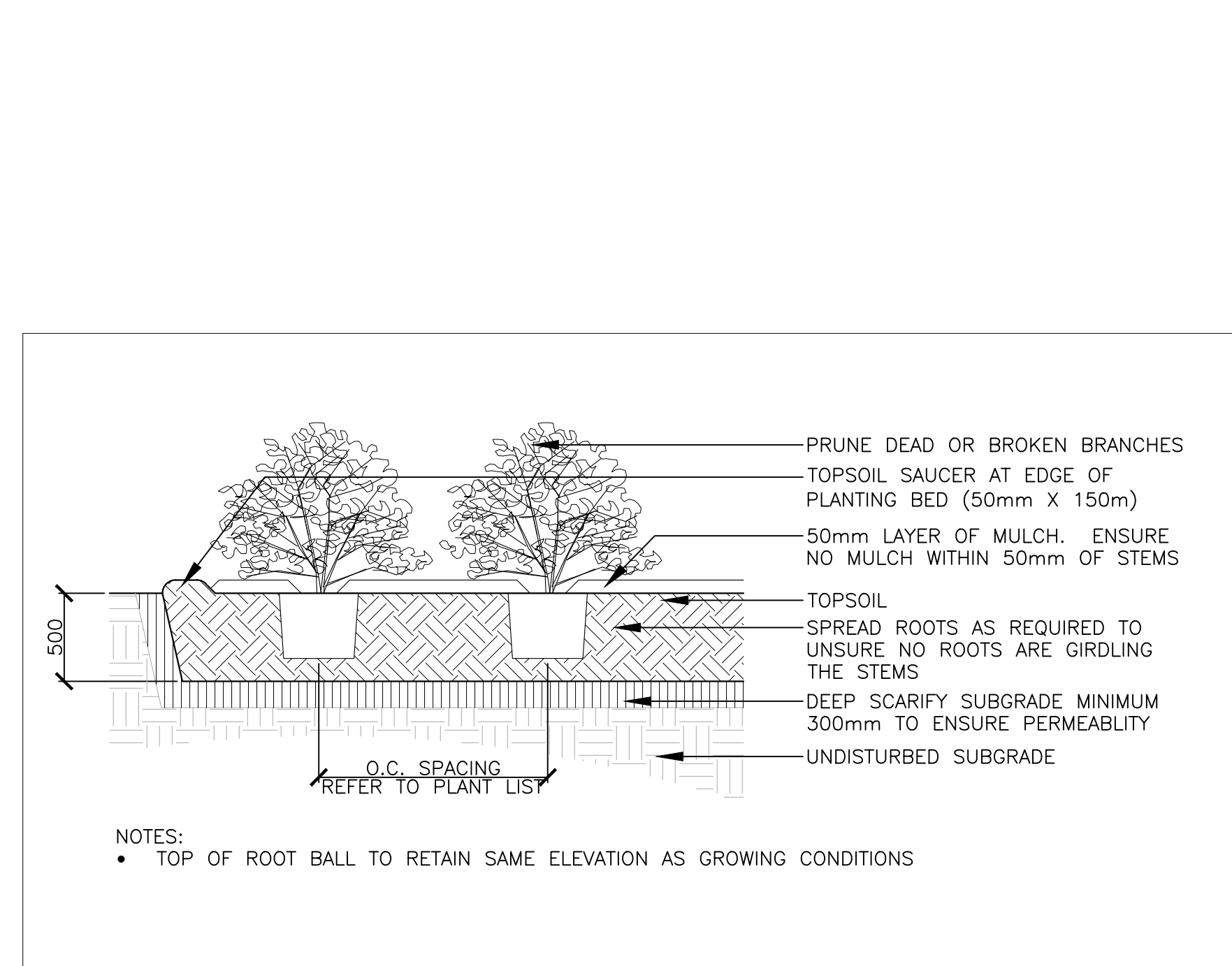
Project: **EXHALO SPA**
3150 WOODROFFE AVENUE
OTTAWA, ONTARIO

Drawing: **PLANTING PLAN**

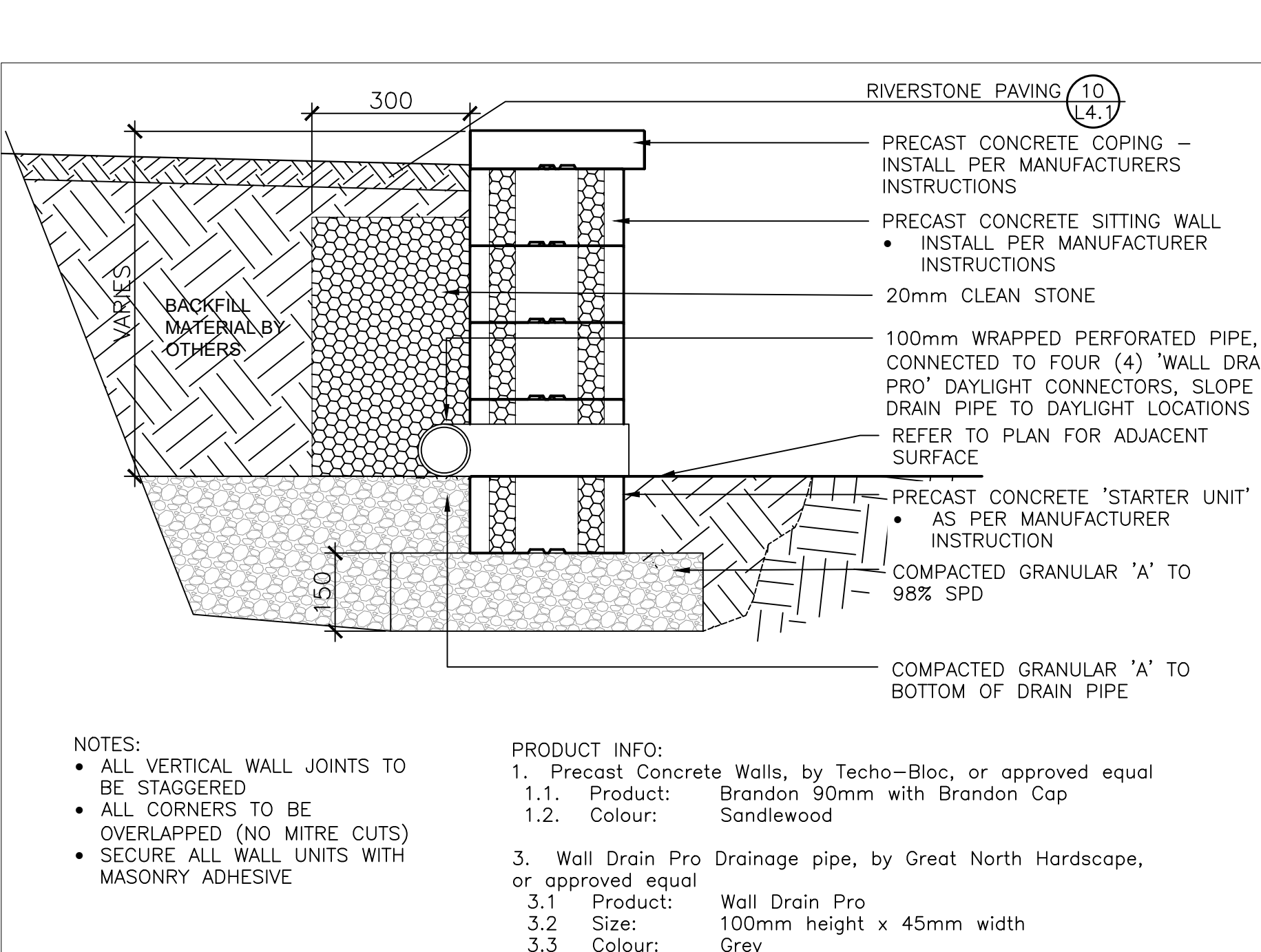
Scale:	1:150	Date:	MAY 2, 2022
Design By:	AB	Drawn By:	AB
Project Number:	2127-01	Sheet Number:	L 3.1



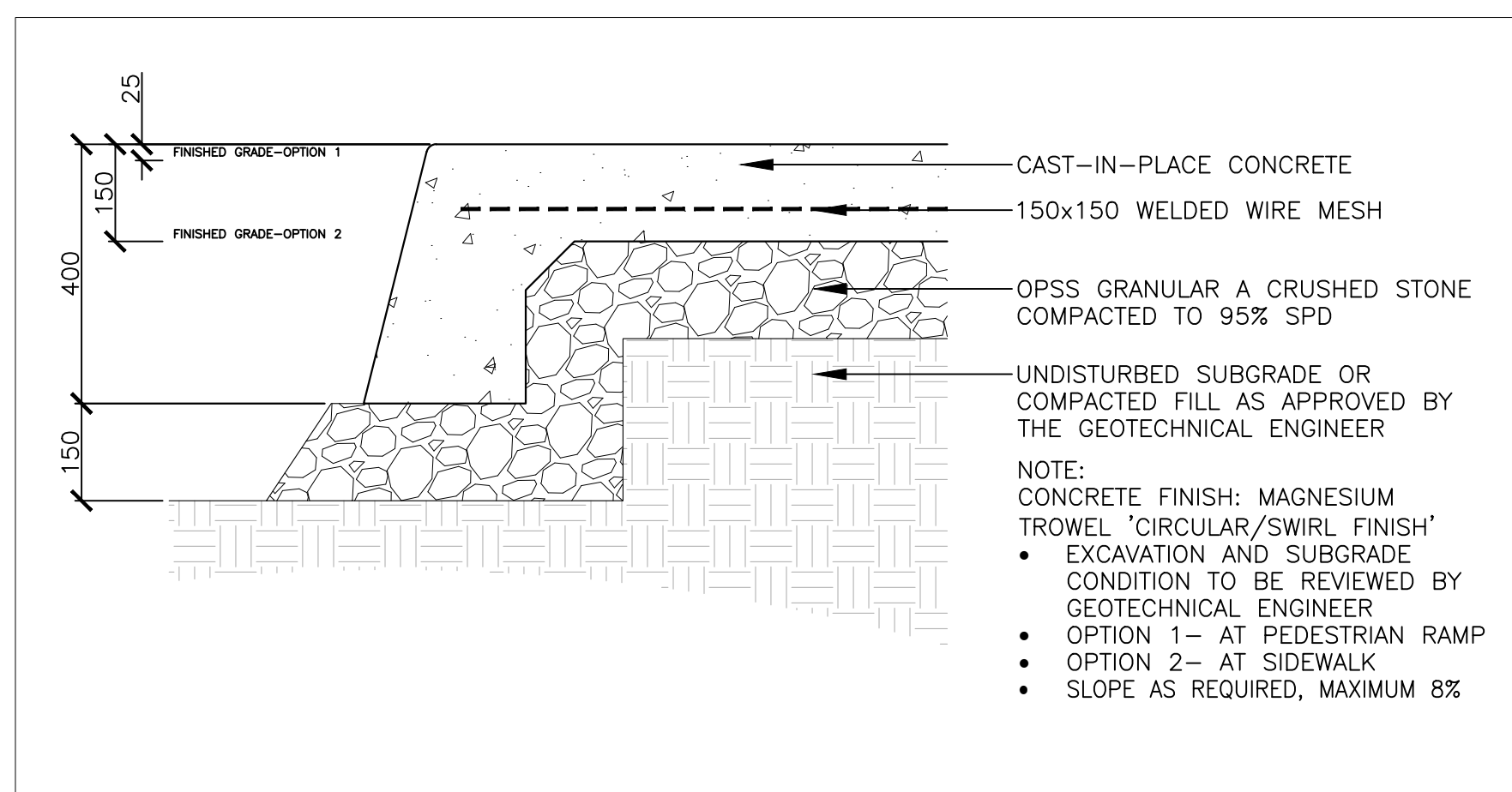
1 TREE PLANTING Scale: 1:30



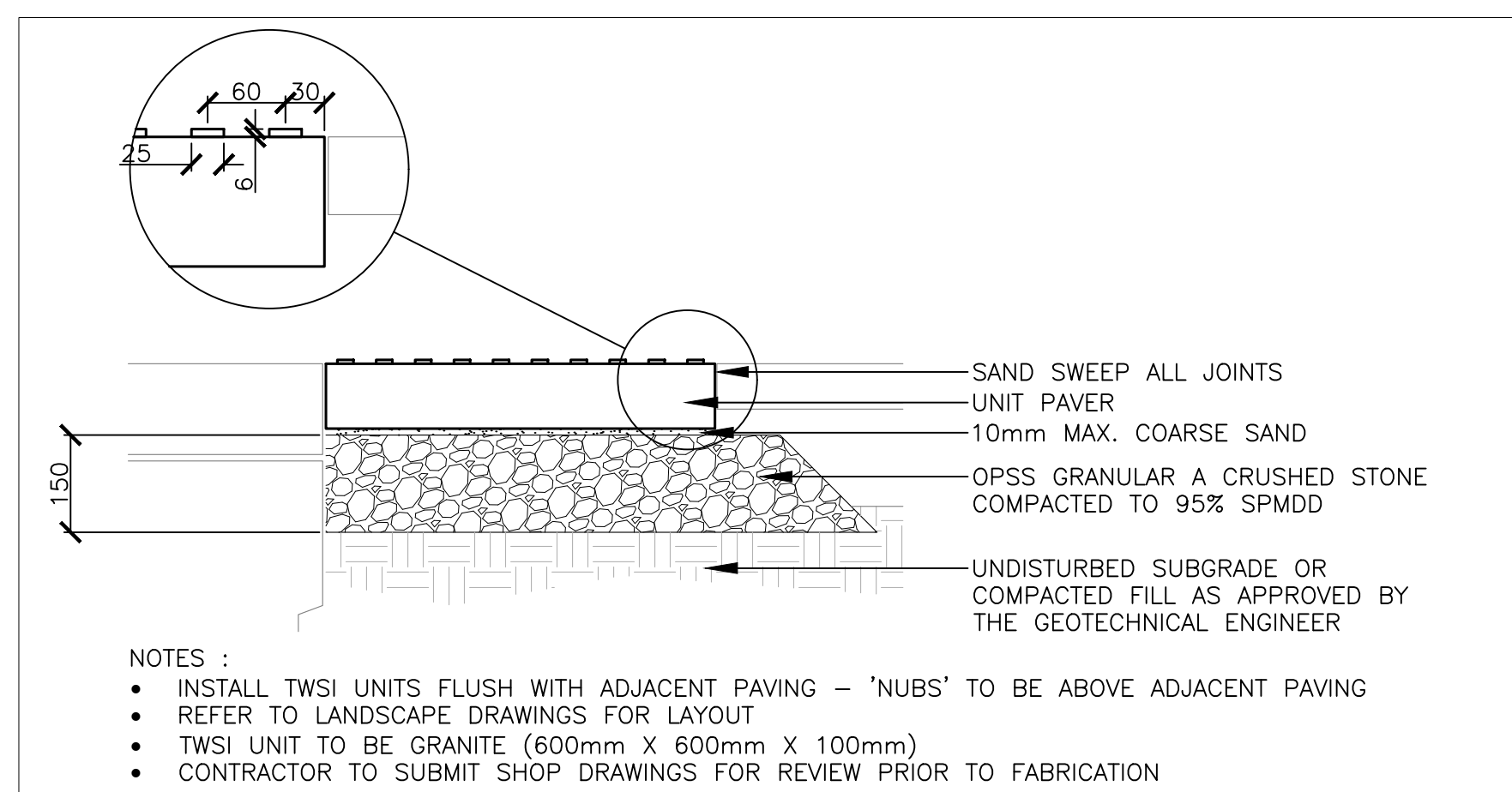
2 PLANTING BED 1:10



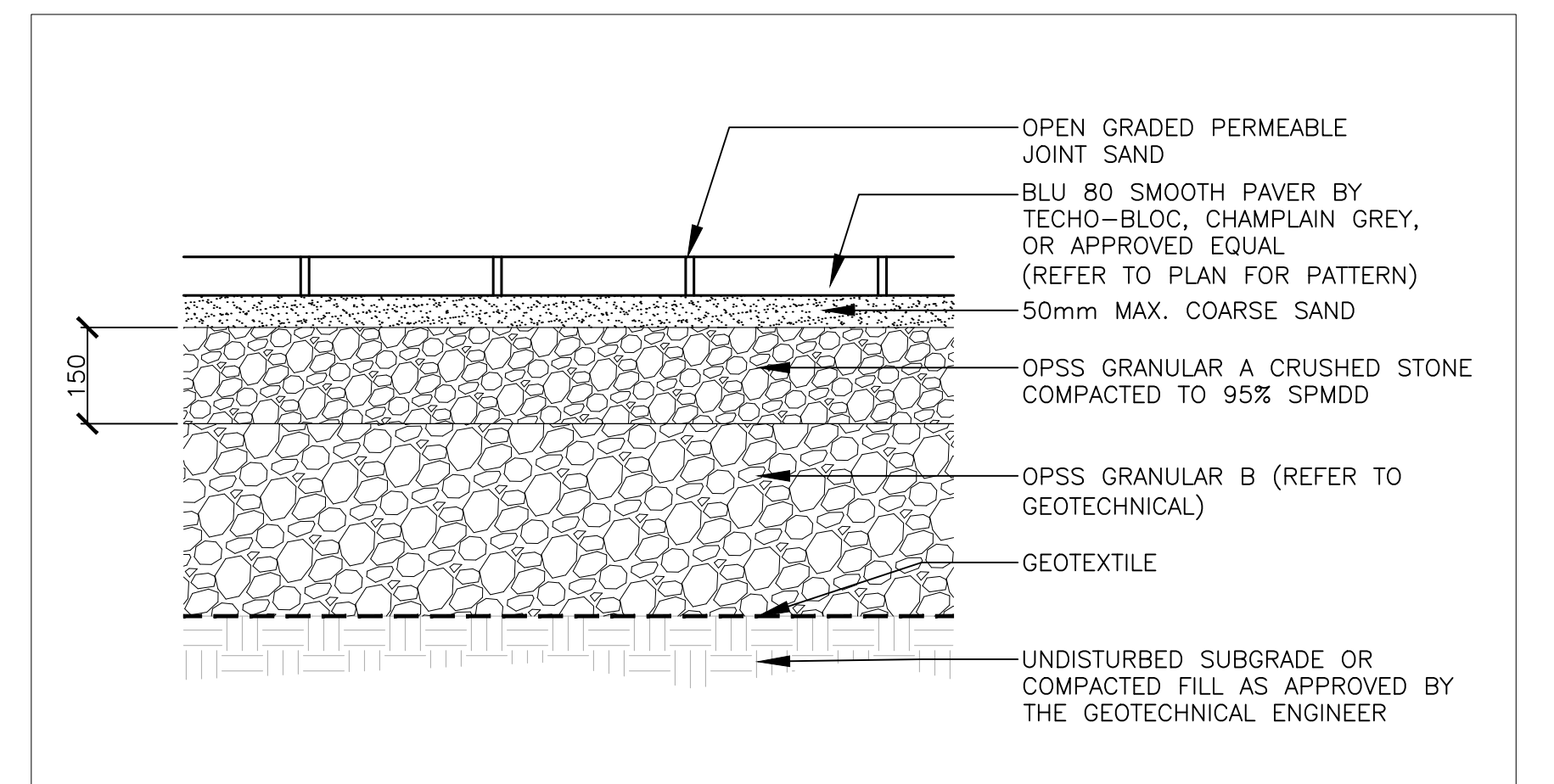
3 PRE-CAST CONCRETE RETAINING WALL 1:10



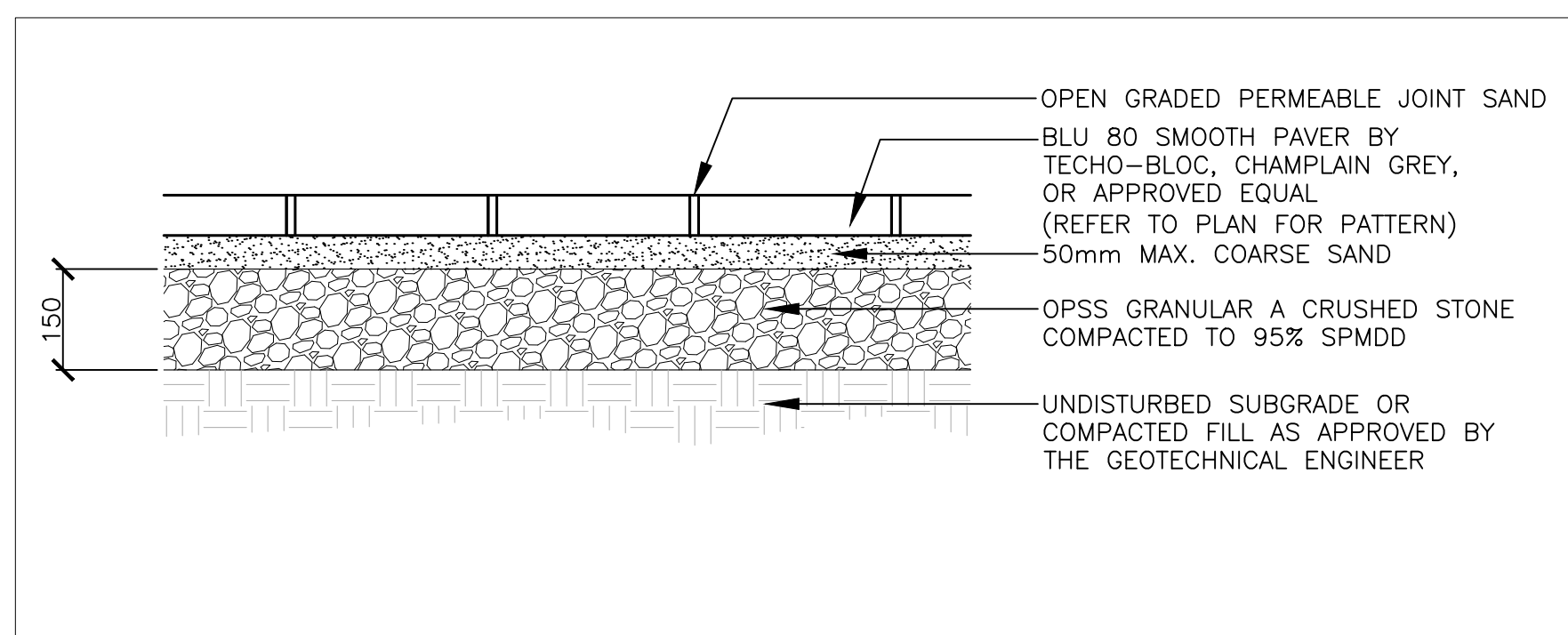
4 C.I.P. CONCRETE PAVING AND CURB 1:10



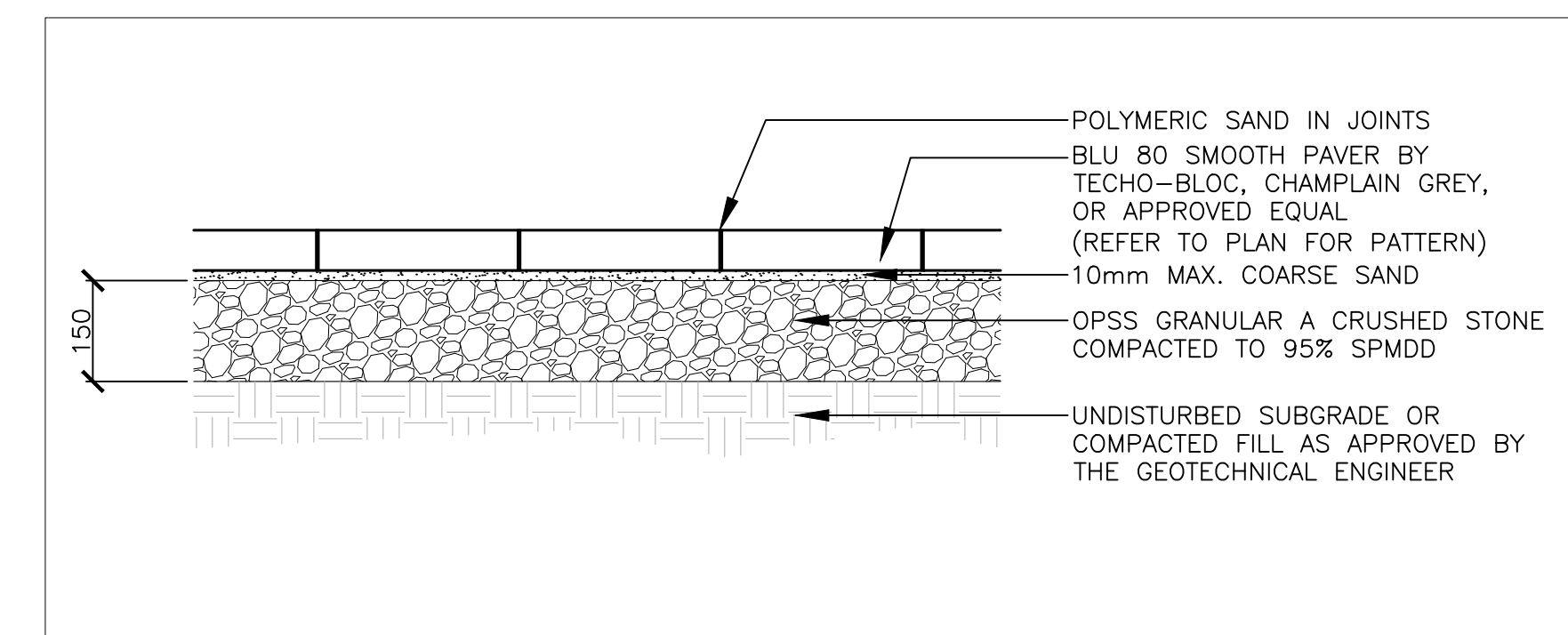
5 TWSI 1:10



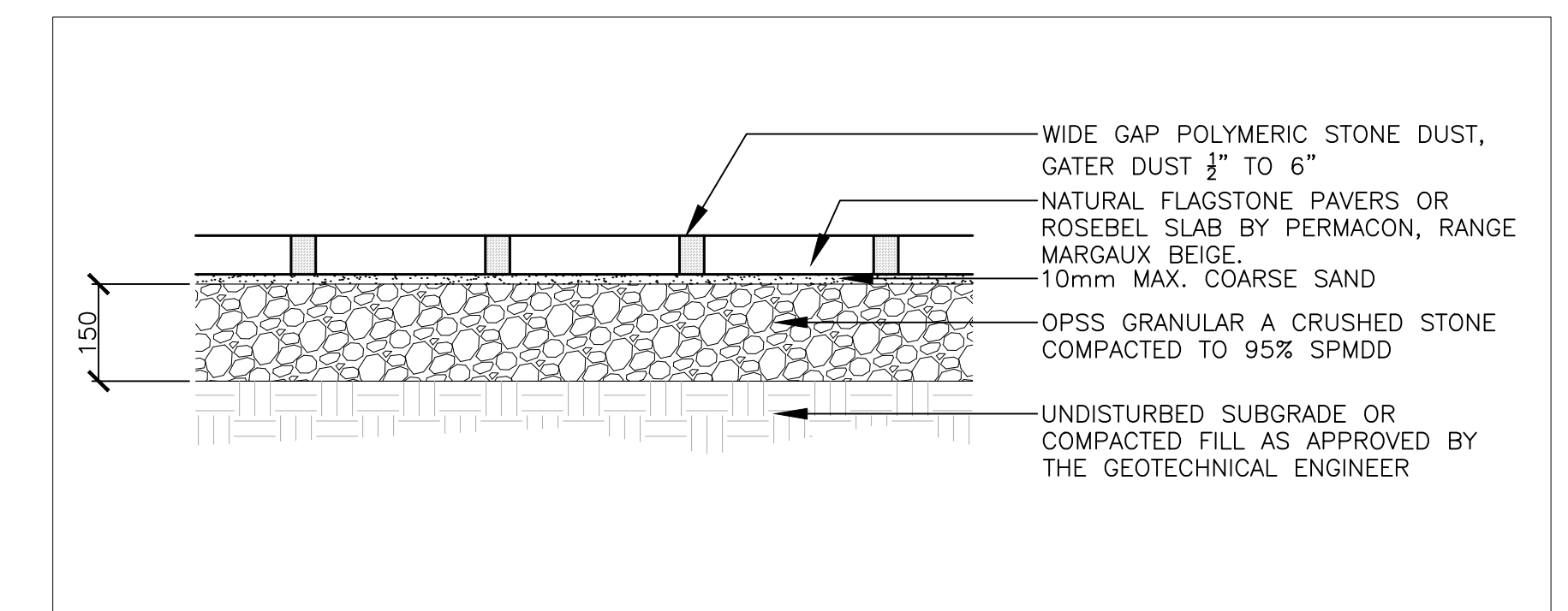
6 VEHICULAR PERMEABLE PAVING 1:10



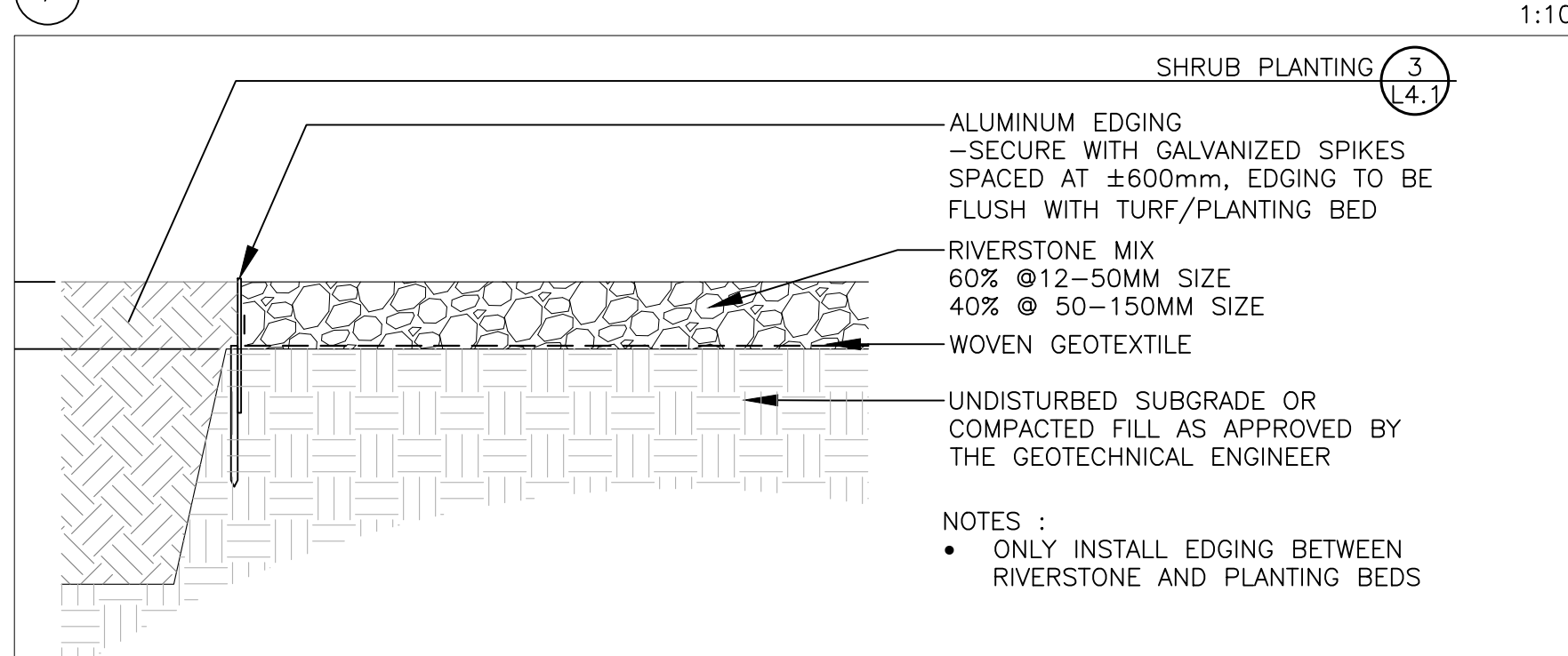
7 PEDESTRIAN PERMEABLE PAVING 1:10



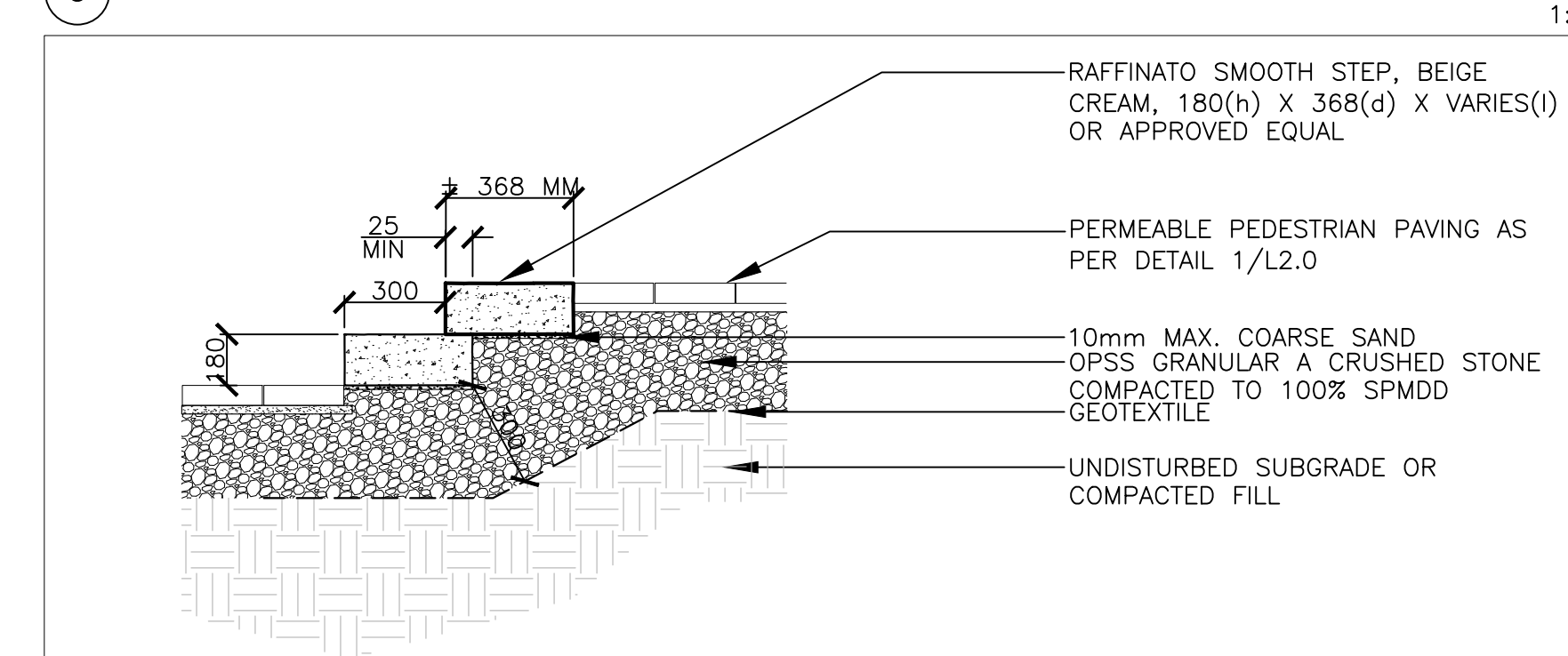
8 PEDESTRIAN UNIT PAVING 1:10



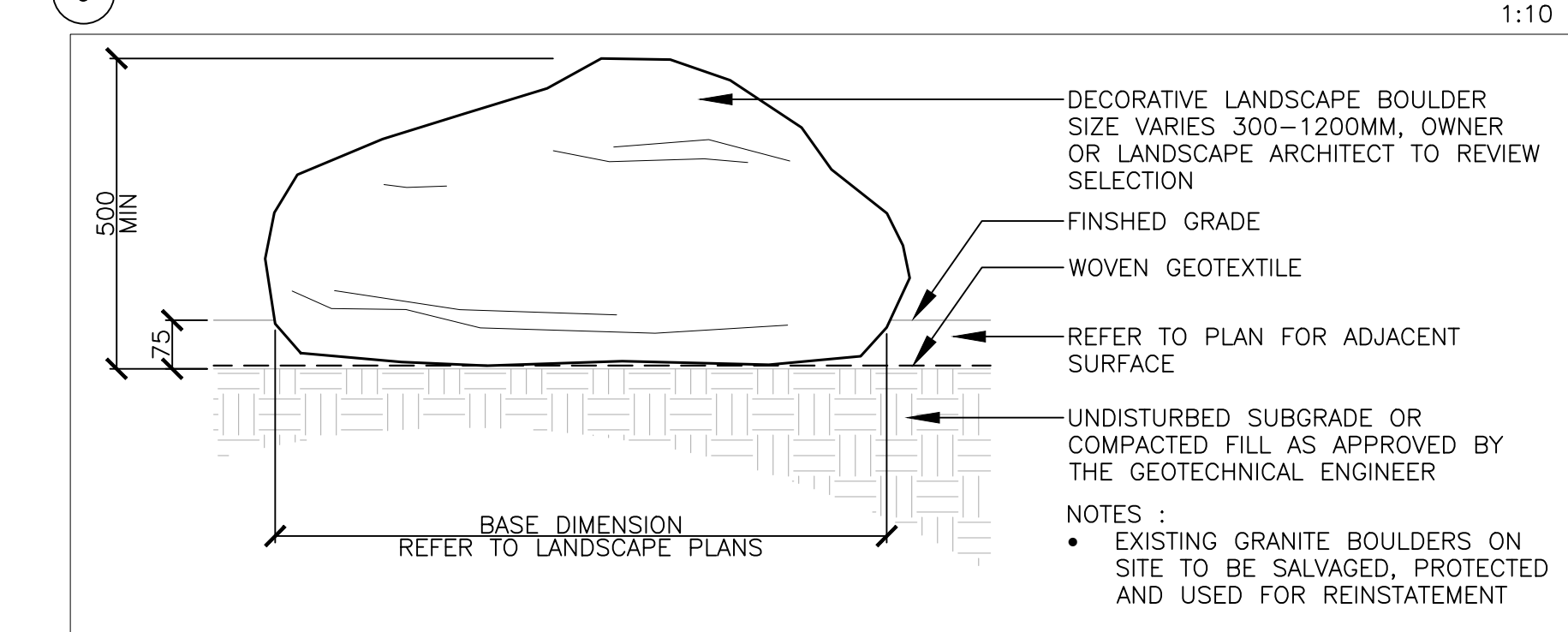
9 FLAGSTONE PAVING 1:10



10 RIVERSTONE PAVING 1:10



11 PRE-CAST CONCRETE STEPS 1:10



12 STONE BOULDER 1:10

Key Plan

No.	ISSUED FOR ---	DD MMM YYYY
Revision		Date

North: Stamp: ASSOCIATION OF LANDSCAPE ARCHITECTS ONTARIO

CSW Landscape Architecture
 Urban Design
 Site Planning
 Recreation and Park Planning
 Project Management
 1960 Scott Street, Suite 200, Ottawa, Ontario K1Z 8L8
 Tel: (613) 729-4536 Fax: (613) 729-3018

- All measurements in millimeters unless specified otherwise. Do not scale drawing. All drawings to be read in conjunction with written specifications.
- Copyright reserved. This drawing is the exclusive property of CSW Landscape Architects Ltd. and shall not be used without the consent thereof.
- This Drawing may not be used for construction until signed by the landscape architect. It is the responsibility of the contractor to:
 - check and verify all dimensions on site;
 - report all errors and/or omissions to the landscape architect;
 - comply with all pertinent codes and by-laws;
 - check and verify locations of all underground services with all local utilities prior to any digging.

Project: EXHALO SPA
 3150 WOODROFFE AVENUE
 OTTAWA, ONTARIO

Drawing:	DETAILS	
Scale:	AS NOTED	Date: MAY 2, 2022
Design By:	AB	Drawn By: AB
Project Number:	2170-01	Sheet Number: L 4.1