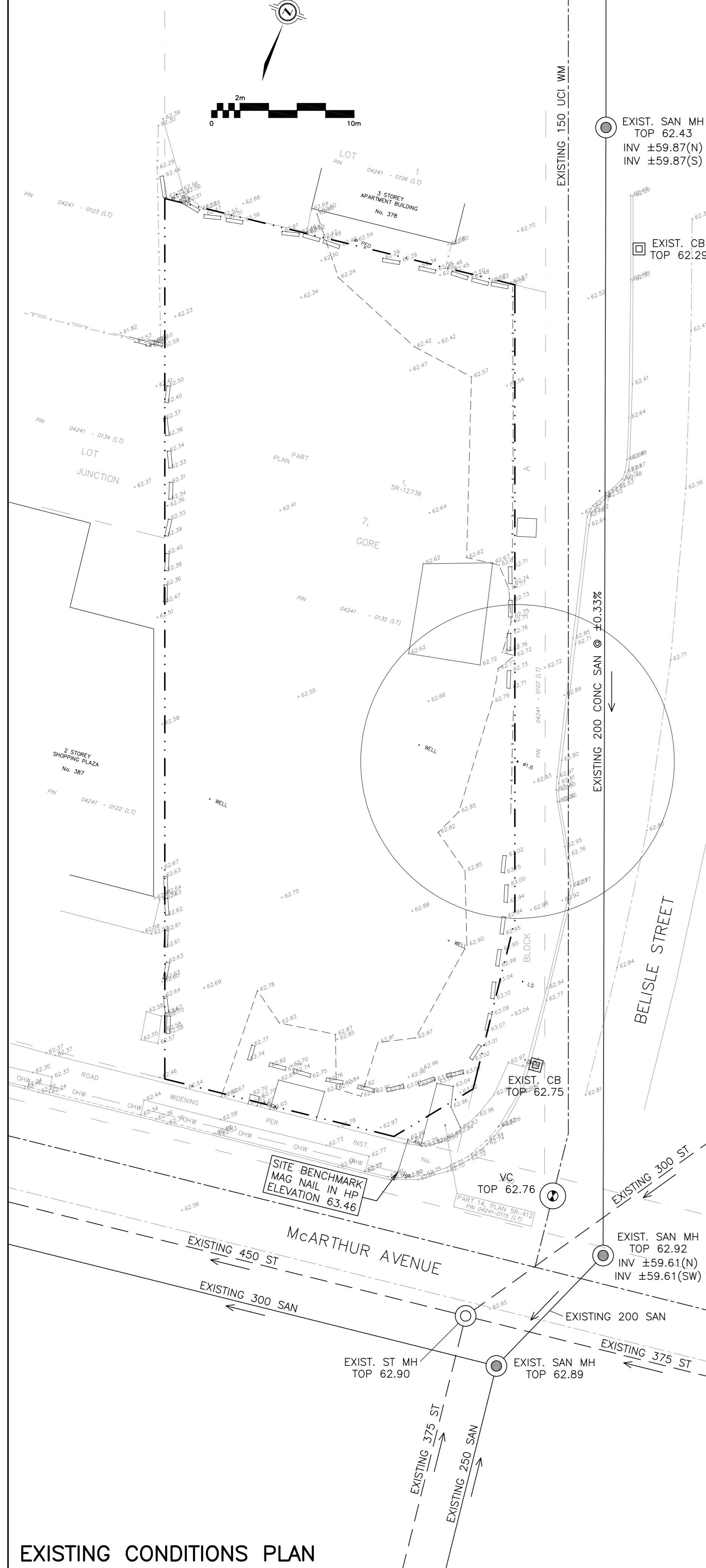
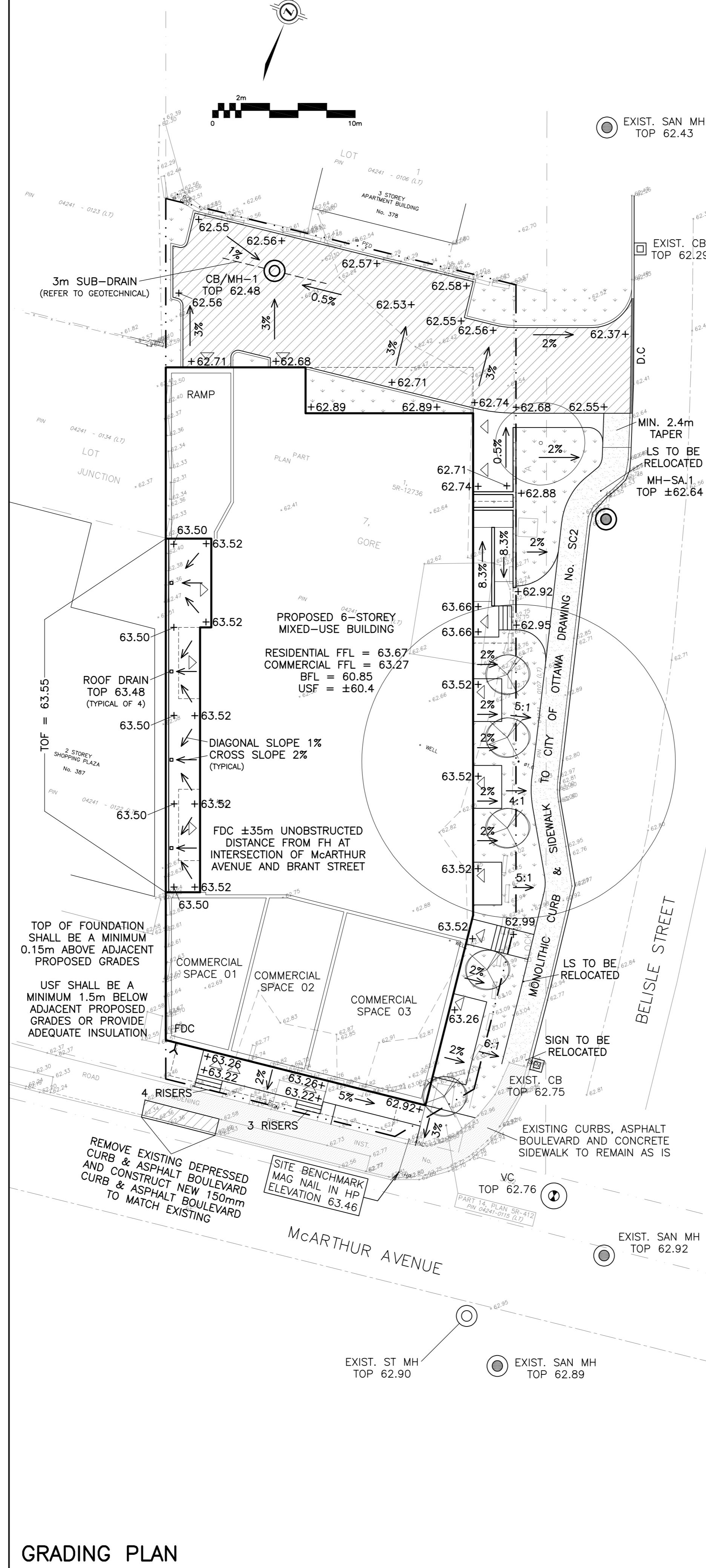


REFER TO NOTES ON DRAWING C-4



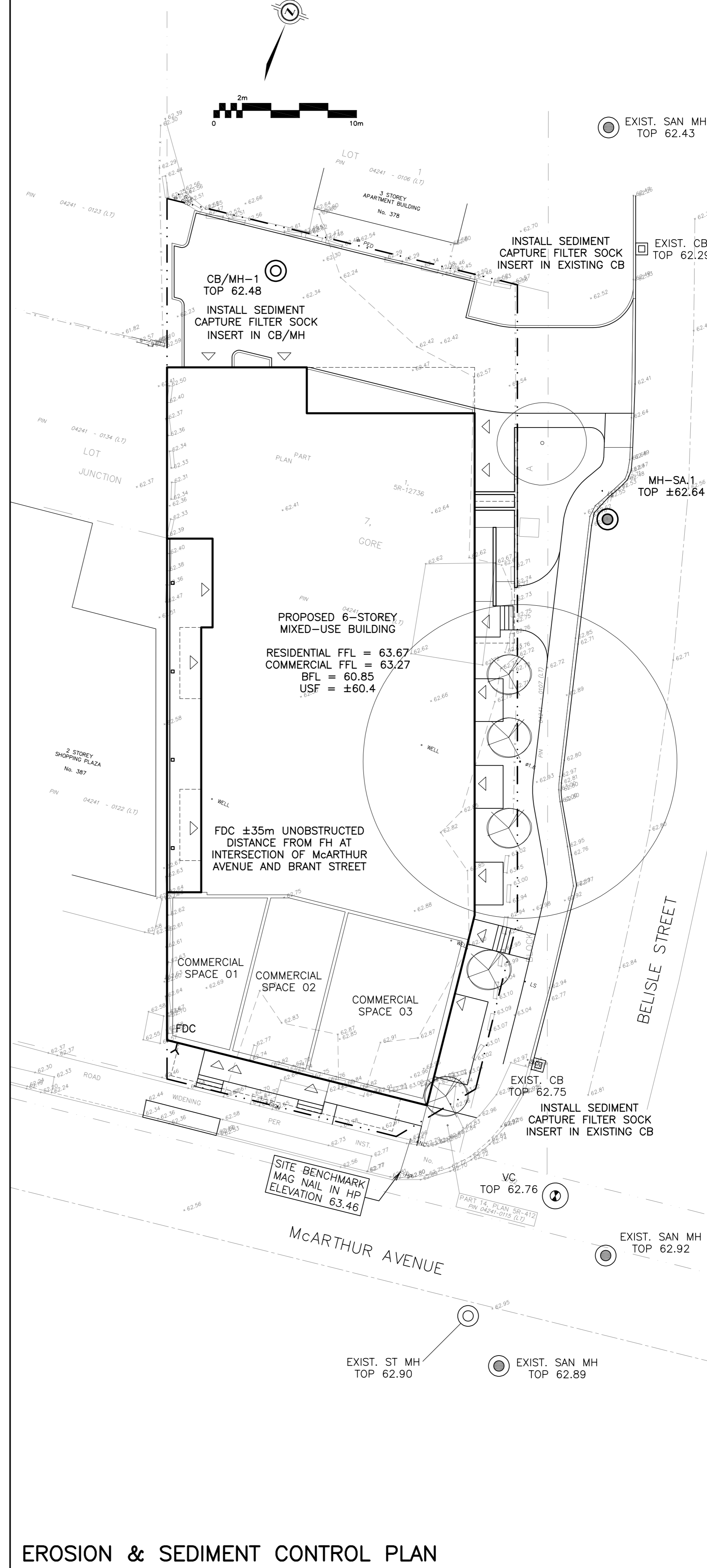
EXISTING CONDITIONS PLAN

REFER TO NOTES ON DRAWING C-4



GRADING PLAN

REFER TO NOTES ON DRAWING C-4

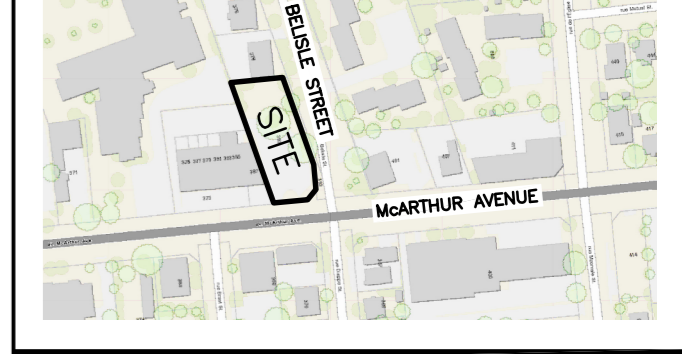


EROSION & SEDIMENT CONTROL PLAN

LEGEND

- FFL FINISHED FLOOR ELEVATION
- BFL BASEMENT FLOOR ELEVATION
- USF UNDERSIDE OF FOOTING
- PROPERTY LINE
- CB CATCH-BASIN
- MH STORM MANHOLE
- CB/MH CATCH-BASIN/MANHOLE
- MH SANITARY MANHOLE
- VC VALVE CHAMBER
- FDC FIRE DEPARTMENT CONNECTION
- +99.99 EXISTING GRADE ELEVATION
- +99.99 PROPOSED GRADE ELEVATION
- 2% PROPOSED SLOPE OF GRADE
- 150mm BARRIER CURB
- D.C. DEPRESSED CURB
- PAVEMENT
- CONCRETE
- LANDSCAPE

KEY PLAN



No.	DATE	REVISION
2	JUN 15-22	ISSUED FOR APPROVAL
1	APR 27-22	ISSUED FOR COORDINATION

D. B. GRAY ENGINEERING INC.
Stormwater Management - Grading & Drainage - Storm & Sanitary Sewers - Retention
 700 Long Point Circle 613-425-8044
 Ottawa, Ontario d.gray@dbgrayengineering.com

Project
PROPOSED 6-STORY MIXED-USE BUILDING
 393 McARTHUR AVENUE
 OTTAWA, ONTARIO

Drawing Title
EXISTING CONDITIONS, GRADING PLAN AND SEDIMENT CONTROL PLAN

Engineer's Seal

 NOT VALID UNLESS SIGNED & DATED

Drawn D.B.G.
 H. Scale 1:200
 V. Scale
 Date APR 27-22
 Job No. 21111

Drawing No.
C-2
 of 4