

PAVEMENT DESIGN
 40mm SUPERPAVE 12.5 ASPHALTIC CONCRETE
 50mm SUPERPAVE 19.0 ASPHALTIC CONCRETE
 50mm SUPERPAVE 19.0 ASPHALTIC CONCRETE
 150mm OPSS GRANULAR A CRUSHED STONE
 600mm OPSS GRANULAR B TYPE II

ANY DISTURBED AREA DURING CONSTRUCTION TO BE RESTORED TO THE ORIGINAL CONDITION OR BETTER TO THE SATISFACTION OF THE AUTHORITIES HAVING JURISDICTION

CONTRACTOR TO VERIFY THE PRECISE LOCATIONS AND INVERT ELEVATIONS OF EX. UNDERGROUND SERVICES AND EX. UTILITIES PRIOR TO STARTING CONSTRUCTION

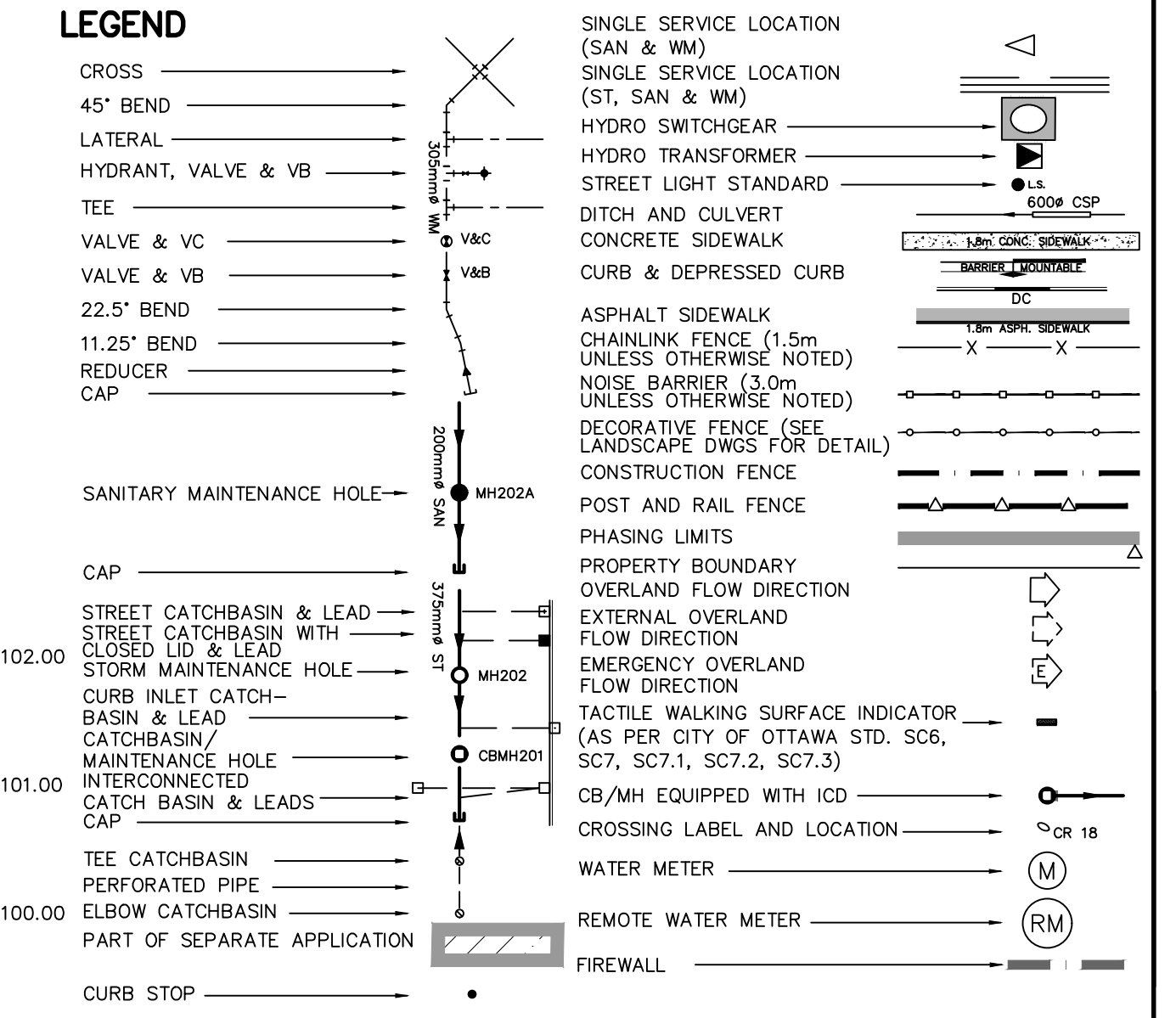
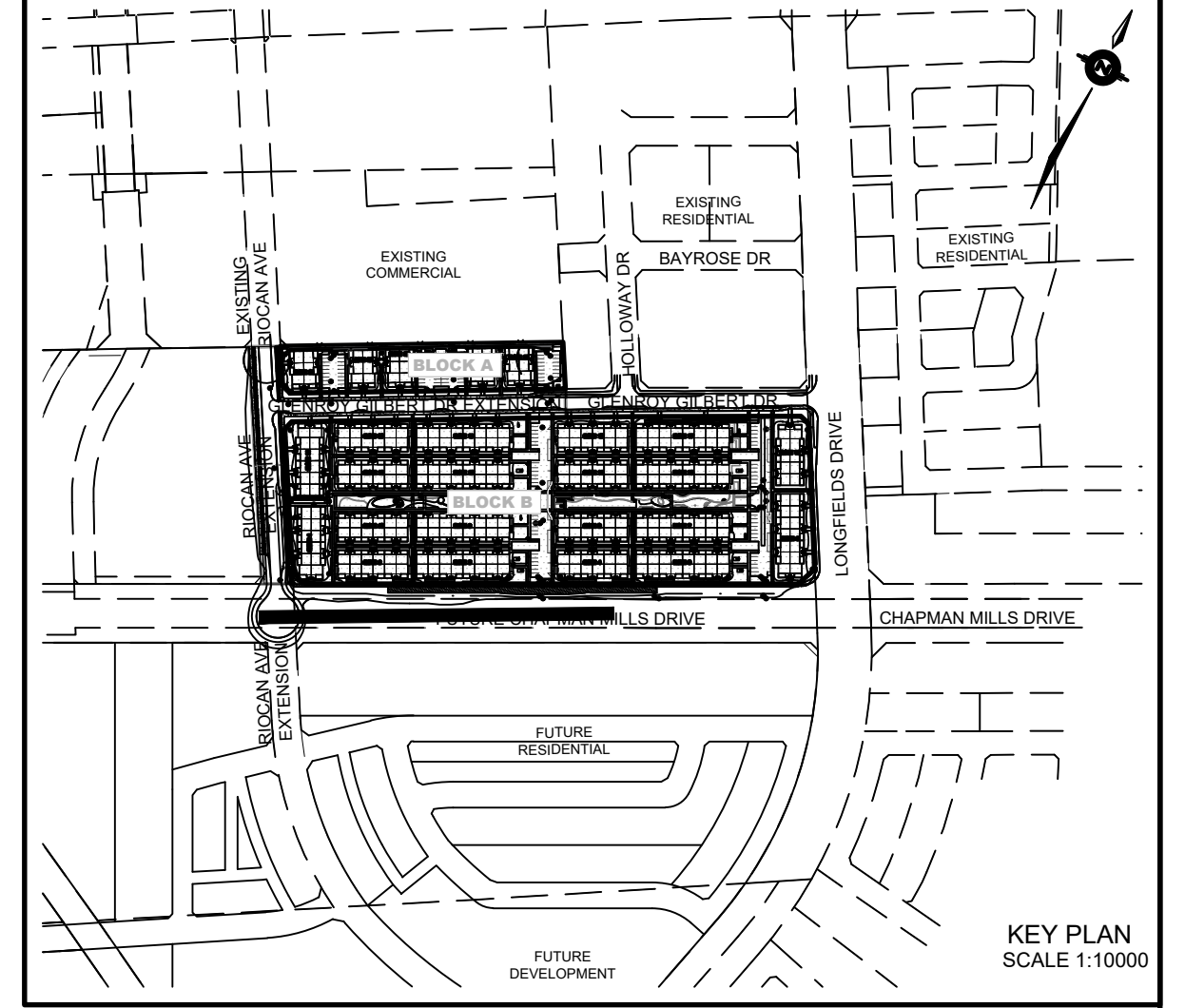
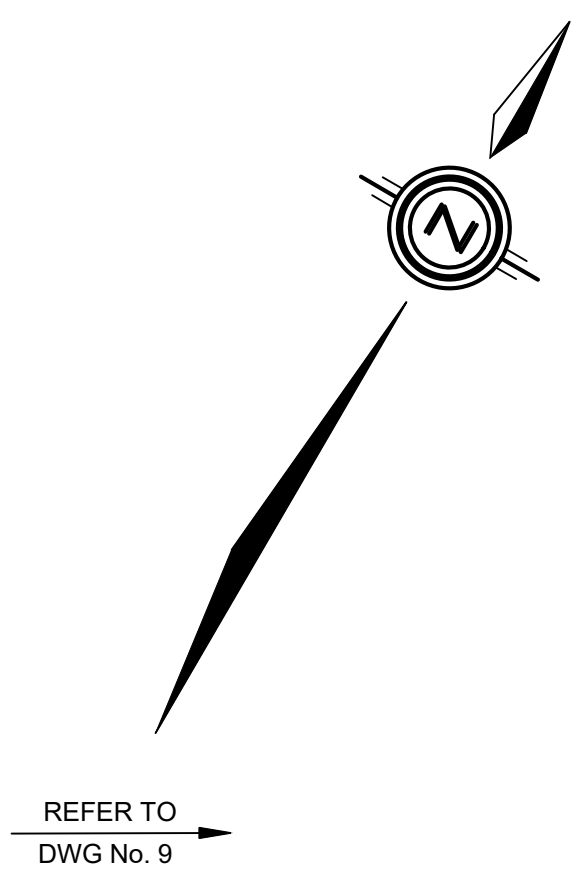
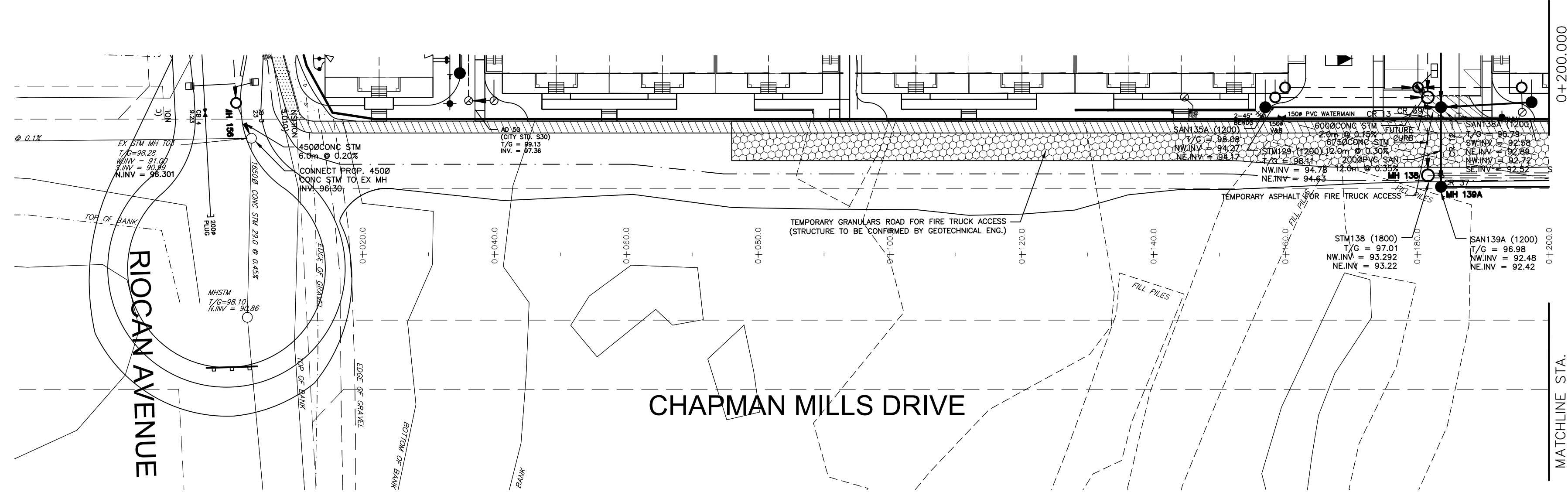
NOTE:
 ALL EXISTING TREES, SHRUBS ETC. WITHIN LOTS, BLOCKS AND ROADS TO BE REMOVED, UNLESS OTHERWISE NOTED

PERMISSION REQUIRED FOR WORK ON ADJACENT LANDS

NOTE: CATCHBASIN DATA
 FOR CATCHBASIN DATA, REFER TO DRAWING No. 3 FOR DETAIL.

NOTE
 FOR WATERMAIN STUBS, 2.4m MIN. COVER TO BE PROVIDED.

NOTE-RE: TEST PIT/BOREHOLE EXCAVATIONS
 ANY DISTURBED MATERIAL ENCOUNTERED BELOW THE SUBGRADE LEVEL WITHIN A BUILDING FOOTPRINT TO BE SUB-EXCAVATED AND BACKFILLED WITH COMPACTED ENGINEERED FILL AS PER GEOTECHNICAL ENGINEERS RECOMMENDATION.



NOT FOR CONSTRUCTION

No.	BY	DATE	DESCRIPTION
7	S.L.M.	24-02-09	SUBMISSION 5
6	S.L.M.	23-10-06	ISSUED FOR TENDER
5	S.L.M.	23-09-22	ISSUED FOR TENDER
4	S.L.M.	23-09-06	ISSUED FOR TENDER

TOPOGRAPHIC INFORMATION
 TOPOGRAPHIC INFORMATION PROVIDED BY STANTEC GEOMATICS LTD., PROJECT No. 161614291-111, DATED MARCH 1, 2022

SITE PLAN INFORMATION
 SITE PLAN PROVIDED BY SRN ARCHITECTS LTD., PROJECT No. S21001, DATED OCTOBER 5, 2023

LEGAL INFORMATION
 CALCULATED DRAFT PLAN PROVIDED BY STANTEC GEOMATICS LTD., PROJECT No. 161614291-131, DATED AUGUST 9, 2023

BENCH MARK
 ELEVATIONS ARE REFERRED TO THE CANADIAN GEODETIC VERTICAL DATUM (CGVD-1928:1978) AND ARE DERIVED FROM BENCHMARK MONUMENT No. 196530071*, HAVING A PUBLISHED ELEVATION OF 99.742 METRES

MINTO COMMUNITIES INC. BARRHAVEN TOWN CENTRE GLENROY GILBERT DRIVE RIOCAN AVENUE & CHAPMAN MILLS DRIVE EXTENSION

120 Iber Road Unit 103
 Slittsville, Ontario, K2S 1E9
 Tel. (613) 836-0856
 Fax. (613) 836-7183
 www.DSEL.ca

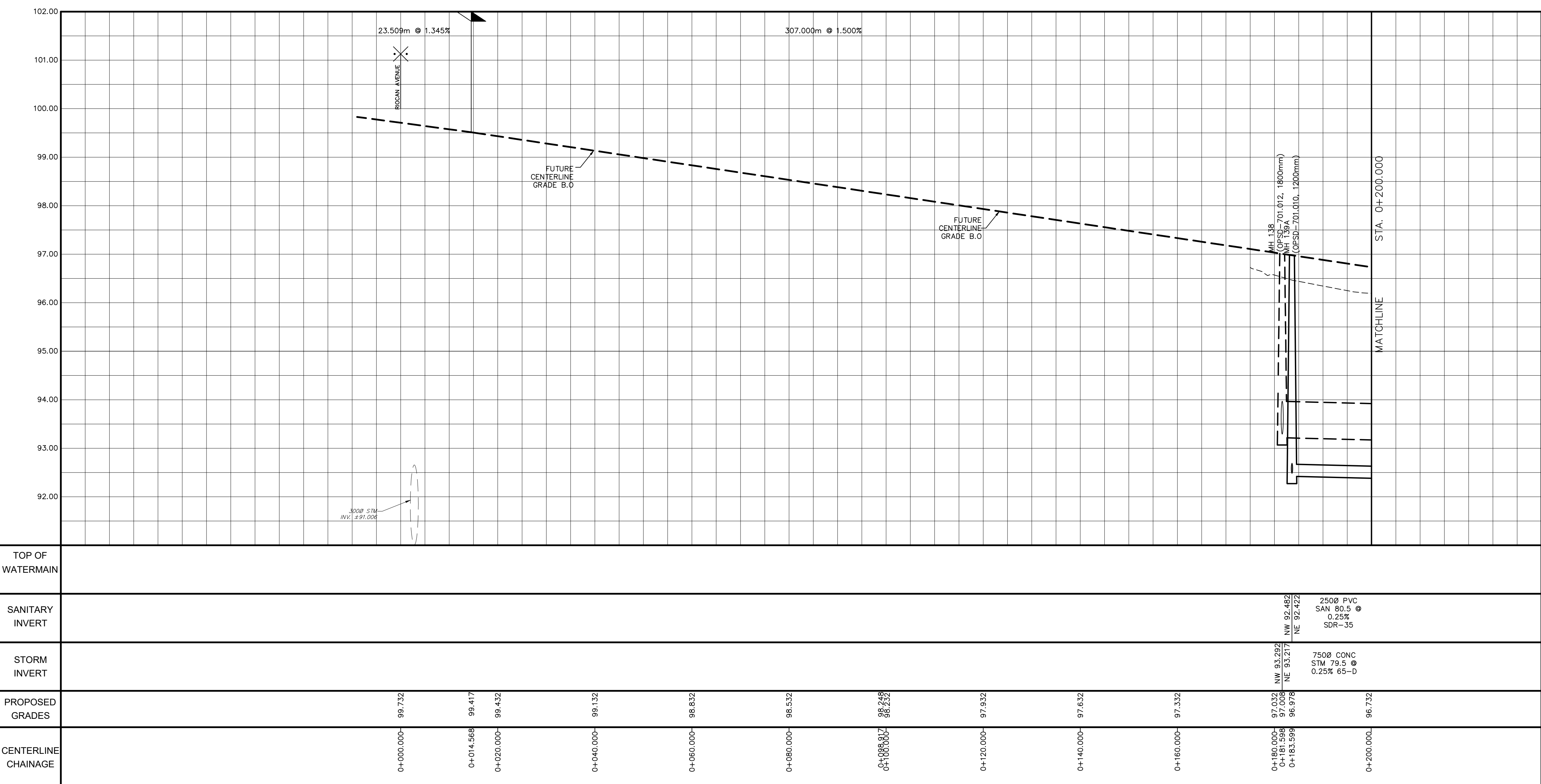
Ottawa 110 Laurier Ave W
 Ottawa, Ontario, K1P 1J1
 Tel. (613) 580-2400
 www.Ottawa.ca

PLAN AND PROFILE OF
CHAPMAN MILLS DRIVE
 STA 0+000.000 TO STA 0+200.000

© DSEL

DRAWN BY: AM	CHECKED BY: BC	PROJECT No. 15-816
DESIGNED BY: BC	CHECKED BY: SM	SHEET No. 8

SCALE: HORZ. 1:500
 VERT. 1:50



CITY PLAN No. 18822
 CITY FILE No. D07-12-22-0104