

**PAVEMENT DESIGN**  
 40mm SUPERPAVE 12.5 ASPHALTIC CONCRETE  
 50mm SUPERPAVE 13.0 ASPHALTIC CONCRETE  
 50mm SUPERPAVE 19.0 ASPHALTIC CONCRETE  
 150mm OPSS GRANULAR A CRUSHED STONE  
 600mm OPSS GRANULAR B TYPE II

ANY DISTURBED AREA DURING CONSTRUCTION TO BE RESTORED TO THE ORIGINAL CONDITION OR BETTER TO THE SATISFACTION OF THE AUTHORITIES HAVING JURISDICTION

CONTRACTOR TO VERIFY THE PRECISE LOCATIONS AND INVERT ELEVATIONS OF EX. UNDERGROUND SERVICES AND EX. UTILITIES PRIOR TO STARTING CONSTRUCTION

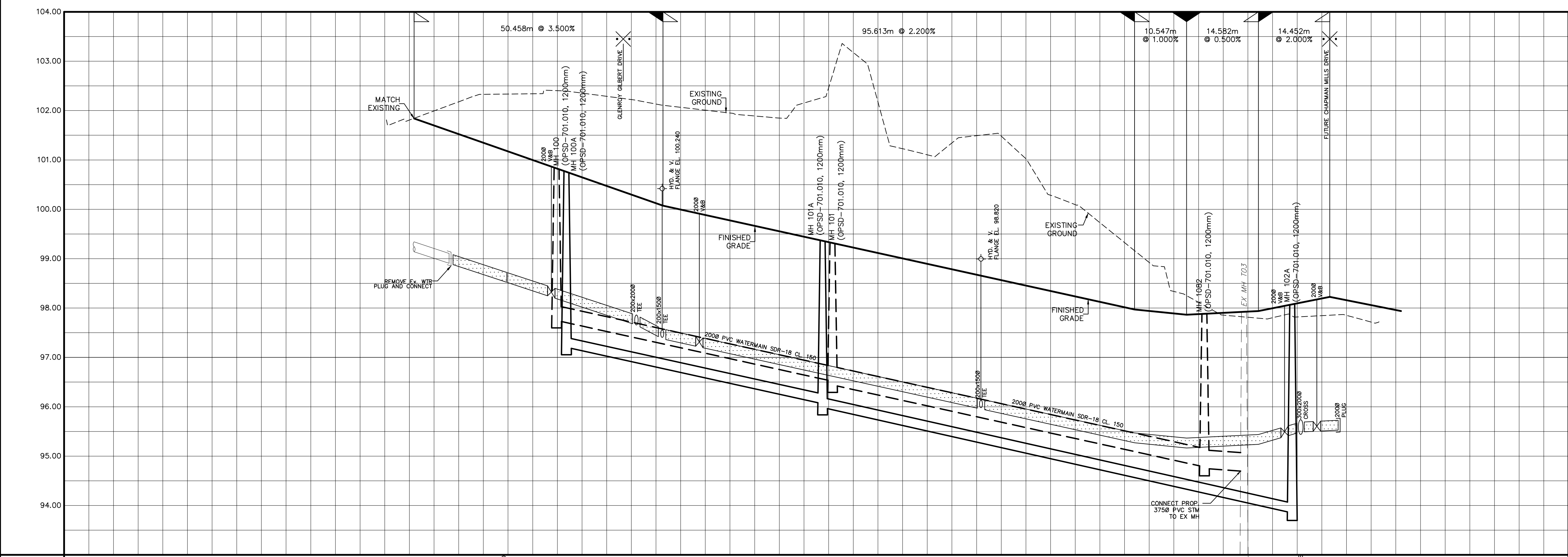
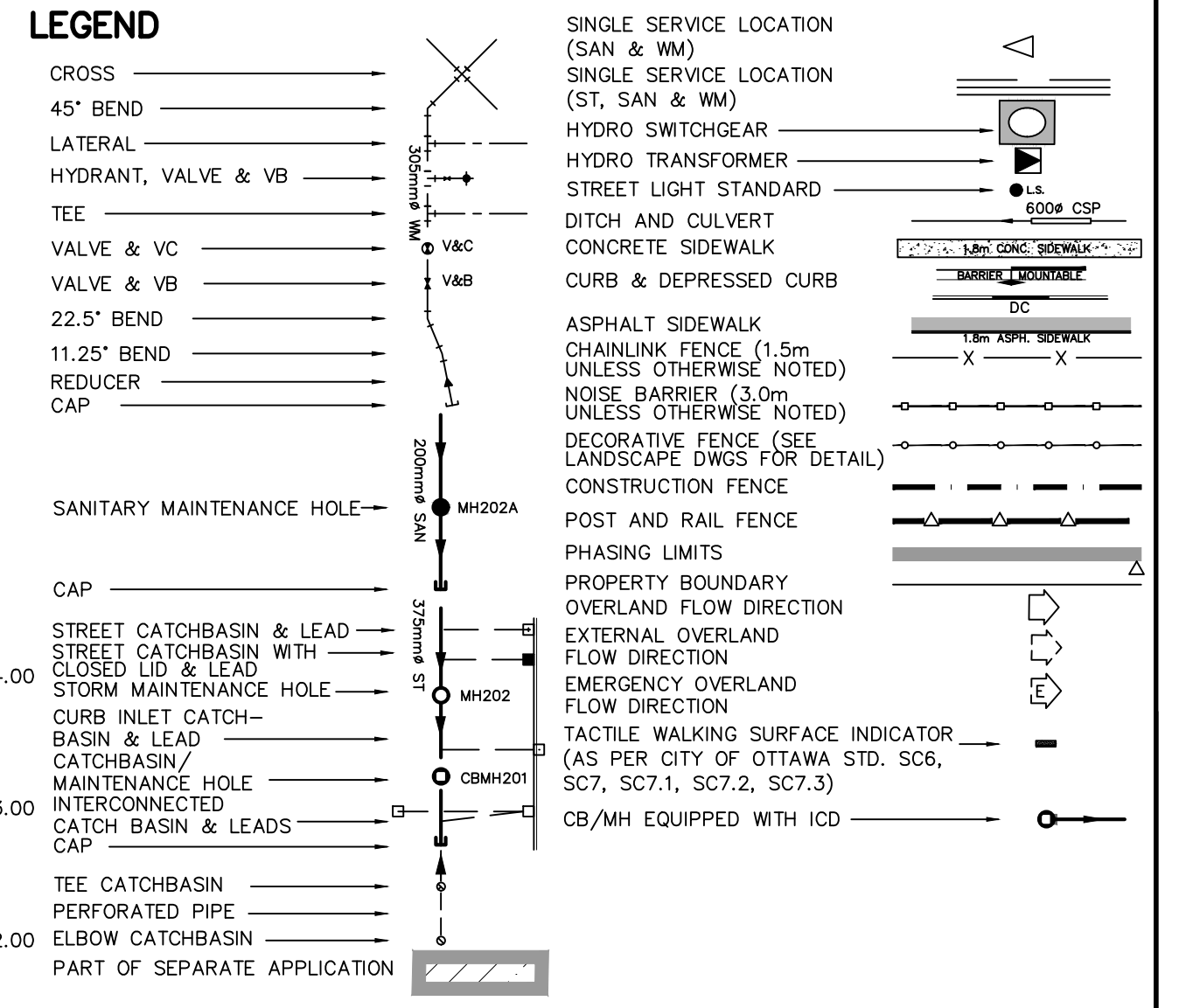
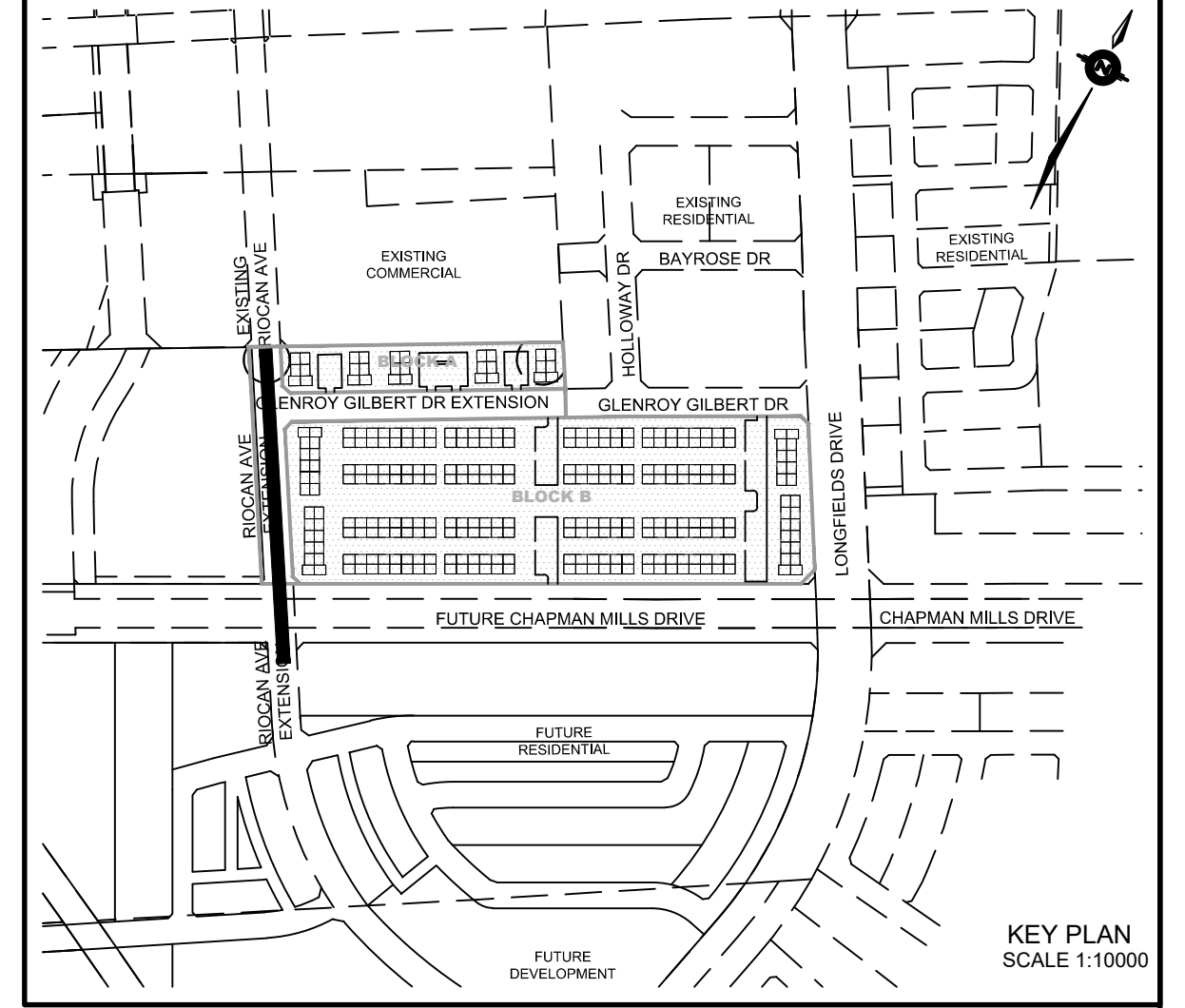
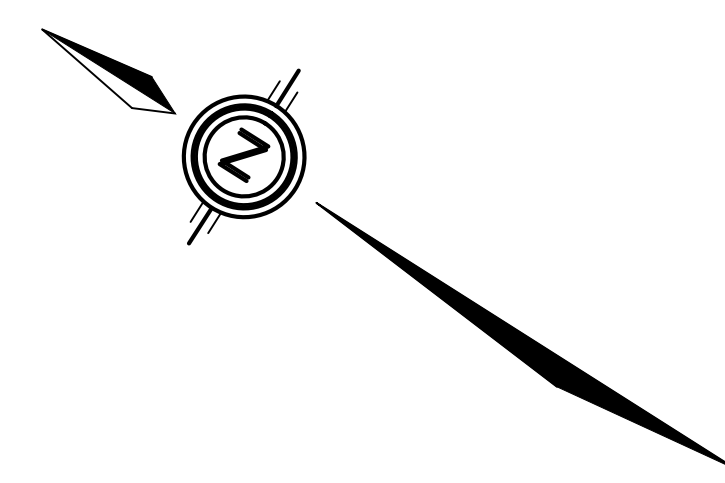
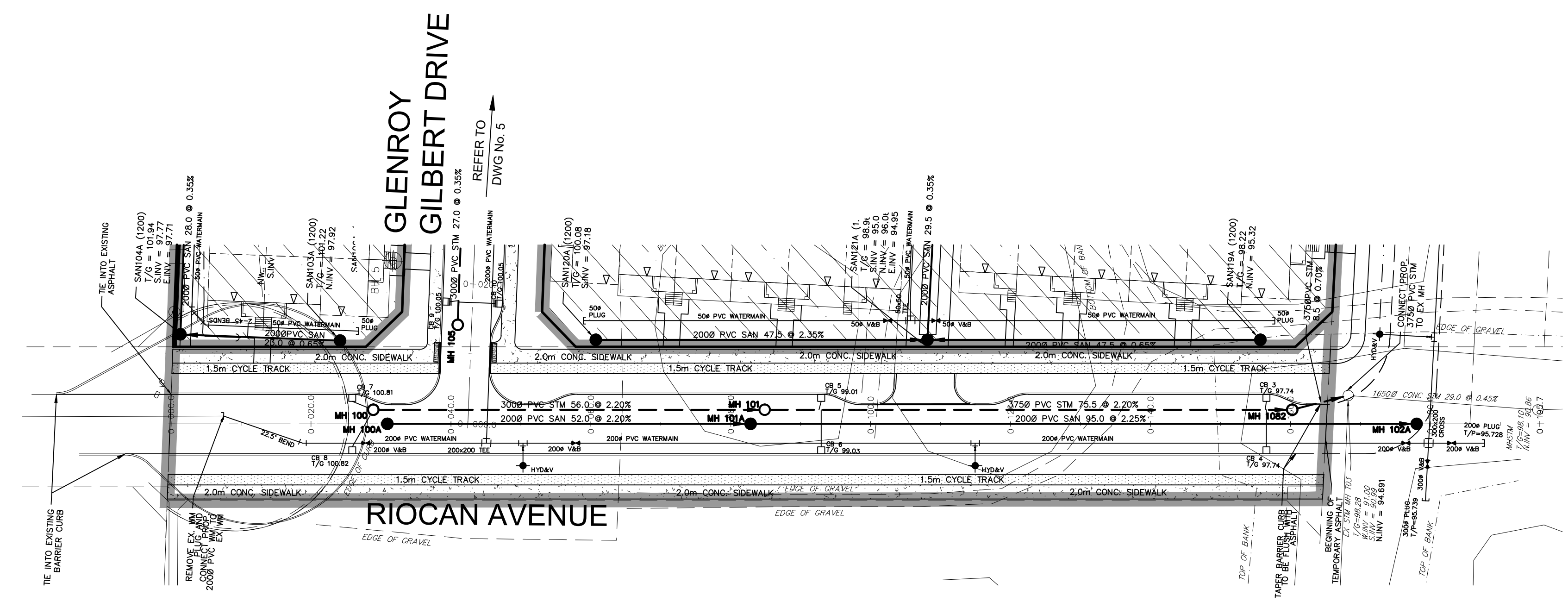
**NOTE:**  
 ALL EXISTING TREES, SHRUBS ETC. WITHIN LOTS, BLOCKS AND ROADS TO BE REMOVED, UNLESS OTHERWISE NOTED

PERMISSION REQUIRED FOR WORK ON ADJACENT LANDS

**NOTE: CATCHBASIN DATA**  
 FOR CATCHBASIN DATA, REFER TO DRAWING No. 3 FOR DETAIL.

**NOTE:**  
 FOR WATERMAIN STUBS, 2.4m MIN. COVER TO BE PROVIDED

**NOTE-RE: TEST PIT/BOREHOLE EXCAVATIONS**  
 ANY DISTURBED MATERIAL ENCOUNTERED BELOW THE SUBGRADE LEVEL WITHIN A BUILDING FOOTPRINT TO BE SUB-EXCAVATED AND BACKFILLED WITH COMPACTED ENGINEERED FILL AS PER GEOTECHNICAL ENGINEERS RECOMMENDATION.



TOP OF WATERMAIN	99.240 2000 W&B 99.600 22.5' HDB BENCH 98.750 2000 W&B 98.424 2000 W&B 97.380 2000 W&B 97.478	97.204	2000 PVC SAN 52.0 @ 2.20% SDR-35	99.424 N. 96.650 0+082.826 SE. 95.868 0+084.826 SE. 95.412	97.978	2000 PVC SAN 52.0 @ 2.20% SDR-35	98.884
SANITARY INVERT							
STORM INVERT			3000 PVC STM 56.0 @ 2.20% SDR-35			3750 PVC STM 75.5 @ 2.20% SDR-35	
PROPOSED GRADES	101.840	101.140	100.826 100.736 100.440 100.356	100.074 99.912 99.864	99.424 99.363 97.886	97.978	98.544
CENTERLINE CHAINAGE	0+000.000	0+020.000	0+028.892 0+030.692	0+040.000 PI 0+042.410	0+050.458 0+057.837 0+060.000	0+080.000 0+082.826 0+084.826	0+120.000

**NOT FOR CONSTRUCTION**

1	S.L.M.	22-06-10	1ST SUBMISSION
No.	BY	DATE	DESCRIPTION
<b>TOPOGRAPHIC INFORMATION</b>			
TOPOGRAPHIC INFORMATION PROVIDED BY STANTEC GEOMATICS LTD., PROJECT No. 161614291-111, DATED MARCH 1, 2022			
<b>SITE PLAN INFORMATION</b>			
SITE PLAN PROVIDED BY SRN ARCHITECTS LTD., PROJECT No. S21001, DATED FEBRUARY 3, 2022			
<b>LEGAL INFORMATION</b>			
CALCULATED M-PLAN PROVIDED BY STANTEC GEOMATICS LTD., PROJECT No. 161614291-111, DATED MARCH 1, 2022			
<b>BENCH MARK</b>			
ELEVATIONS ARE REFERRED TO THE CANADIAN GEODETIC VERTICAL DATUM (CGVD-1928:1978) AND ARE DERIVED FROM BENCHMARK MONUMENT No. 196530071*, HAVING A PUBLISHED ELEVATION OF 99.742 METRES			

MINTO COMMUNITIES INC.      BARRHAVEN TOWN CENTRE  
 GLENROY GILBERT DRIVE & RIOCAN AVENUE ROADWAY EXTENSIONS

**DSEL**      **S.L. MERRICK**  
 120 Ber Road Unit 103  
 Stittsville, Ontario, K2S 1E9  
 Tel. (613) 836-0856  
 Fax. (613) 836-7183  
 www.DSEL.ca

**Ottawa**      110 Laurier Ave W  
 Ottawa, Ontario, K1P 1J1  
 Tel. (613) 580-2400  
 www.Ottawa.ca

PLAN AND PROFILE OF  
**RIOCAN AVENUE**  
 (STA 0+000.000 TO STA 0+200.000)

DRAWN BY: AM	CHECKED BY: BC	PROJECT No. <b>15-816</b>
DESIGNED BY: BC	CHECKED BY: SM	SHEET No. <b>6</b>
SCALE:      HORZ. 1:500      0      5      10      15      20	VERT. 1:50      0      0.5      1.0      1.5      2.0	

CITY PLAN No. XXXXX  
 CITY FILE No. D07-XX-XX-XXXX