

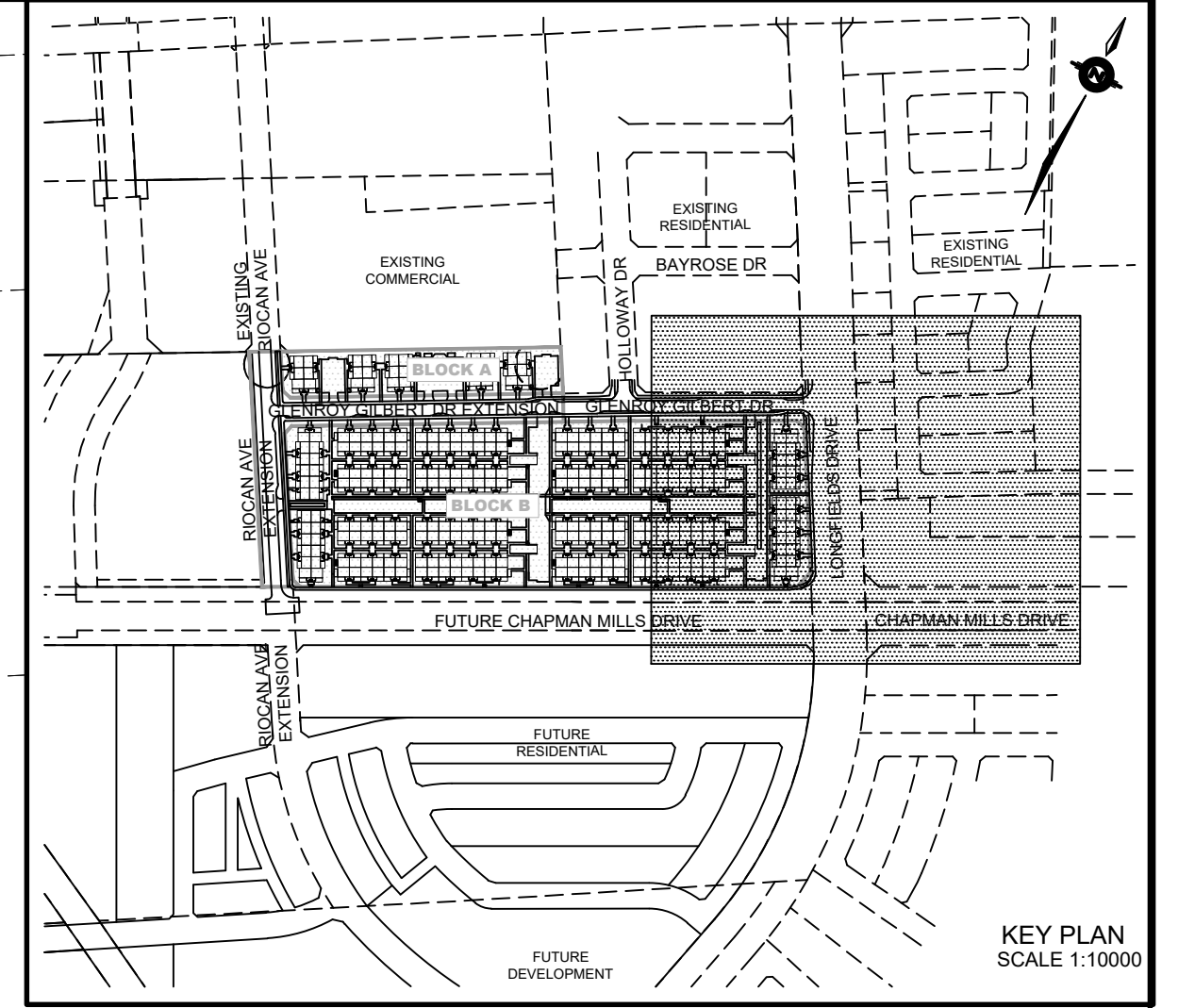
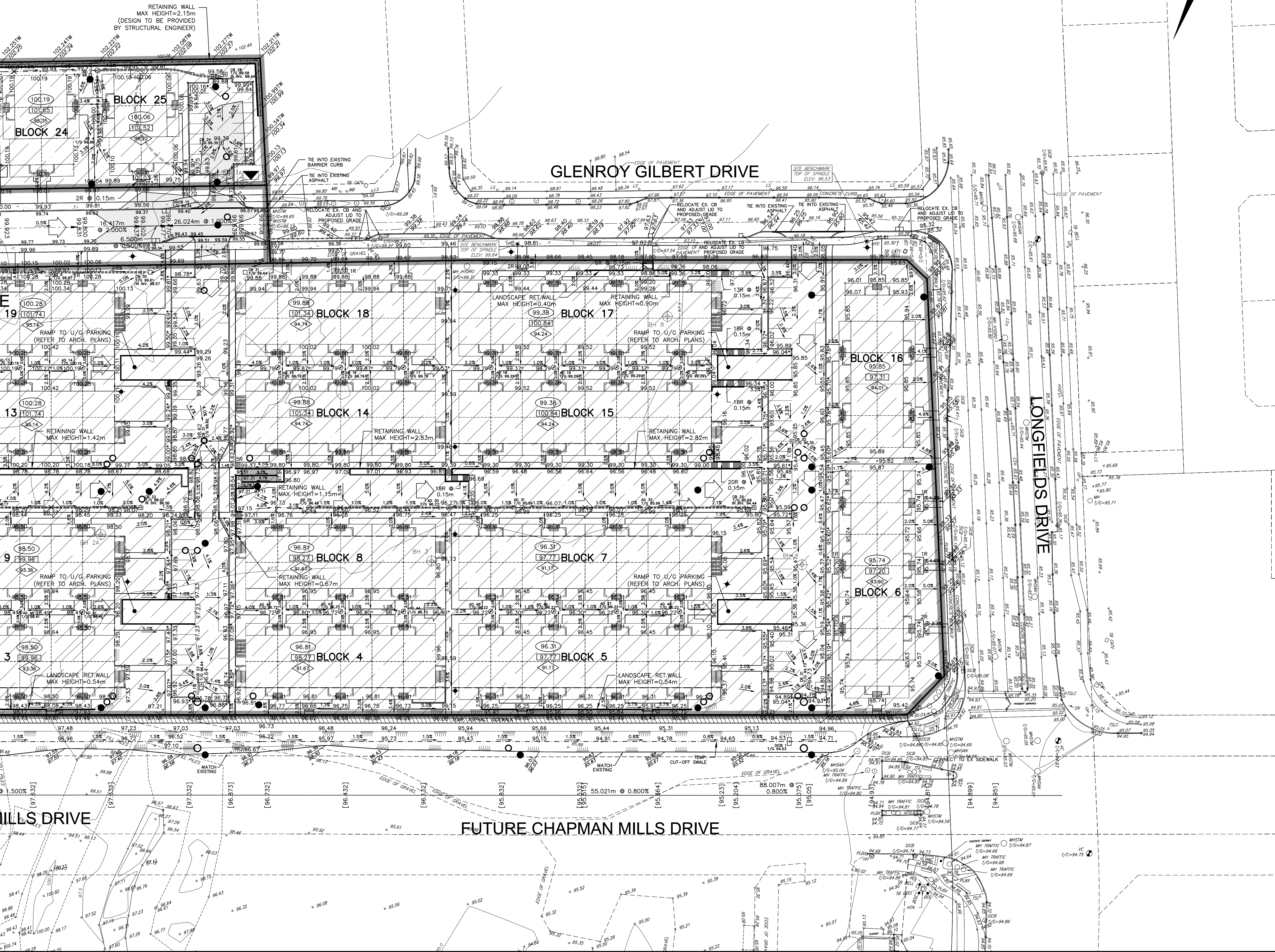
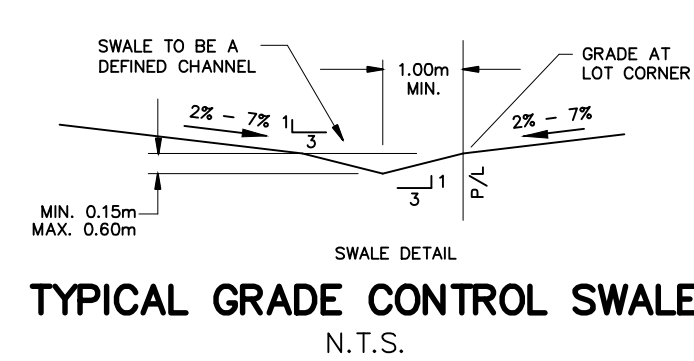
NOTE:
A GEOTECHNICAL ENGINEER LICENSED IN THE PROVINCE OF ONTARIO IS TO INSPECT ALL SUBGRADE SURFACES FOR FOOTING AND PAVEMENT STRUCTURES PRIOR TO CONSTRUCTION

NOTE:
ALL EXISTING POST & WIRE FENCE, CULVERTS, UTILITY WIRE / POLES, TREES, SHRUBS ETC. WITHIN LOTS, BLOCKS AND ROADS TO BE REMOVED, UNLESS OTHERWISE NOTED

NOTE RE: PERFORATED PIPE
PERFORATED PIPE IS REQUIRED FOR SWALE SLOPE LESS THAN 1.5%. REFER TO CITY STD. S29, S30 FOR REAR YARD TRENCH AND PIPE DETAIL ONLY

NOTE:
ALL SWALES SHALL BE 0.15m DEEP WITH 3:1 SIDE SLOPES UNLESS OTHERWISE INDICATED

NOTE:
ENTRANCES TO PRIVATE SITE PER SC7.1



LEGEND

PROPOSED ELEVATION	103.45	OVERLAND FLOW DIRECTION	→
EXISTING ELEVATION	102.73	EXTERNAL OVERLAND FLOW DIRECTION	→
FUTURE ELEVATION	[93.90]	EMERGENCY OVERLAND FLOW DIRECTION	→
PROPOSED SWALE GRADE	1.5%	RETAINING WALL AND ELEVATIONS	1.7m-103.10 8.7m-102.44
HIGH POINT	102.16	CHAINLINK FENCE (1.5m UNLESS OTHERWISE NOTED)	— —
STREET CATCHBASIN		NOISE BARRIER (3.0m UNLESS OTHERWISE NOTED)	— —
STREET CATCHBASIN WITH CLOSED LID		DECORATIVE FENCE (SEE LANDSCAPE DWGS FOR DETAIL)	— —
CATCHBASIN MANHOLE		CONSTRUCTION FENCE	— —
TEE CATCHBASIN		PROPERTY BOUNDARY	— —
ELBOW CATCHBASIN		3:1 TERRACING MAXIMUM SLOPE	— —
HYDRANT, VALVE & VB		UNDERSIDE OF FOOTING ELEVATION (USF)	— —
VALVE & VC		UNITS REQUIRING WATER PRESSURE REDUCING VALVES	— —
VALVE & VB		WALKOUT UNITS	— —
BUILDING ENVELOPE		SLAB ON GRADE	— —
TOP OF FOUNDATION (TOF)		HYDRO SWITCHGEAR	— —
FINISHED FLOOR ELEVATION (FFE)		HYDRO TRANSFORMER	— —
UNDERSIDE OF FOOTING ELEVATION (USF)		STREET LIGHT STANDARD	— —
UNITS REQUIRING WATER PRESSURE REDUCING VALVES		TACTILE WALKING SURFACE INDICATOR (AS PER CITY OF OTTAWA STD. S46)	— —
WALKOUT UNITS		PREVIOUS PHASES / PHASES NOT PART OF CURRENT GRADING APPROVAL	— —
SLAB ON GRADE			
250# PVC PERFORATED PIPE (REFER TO CITY STD S29 FOR REAR YARD TRENCH AND PIPE DETAILS ONLY) (SUBIRAN APPLIED FOR SLOPE LESS THAN 1.5%)			

NOT FOR CONSTRUCTION

No.	BY	DATE	DESCRIPTION
3	S.L.M.	23-06-30	3RD SUBMISSION
2	S.L.M.	23-03-10	2ND SUBMISSION
1	S.L.M.	22-06-10	1ST SUBMISSION

TOPOGRAPHIC INFORMATION
TOPOGRAPHIC INFORMATION PROVIDED BY STANTEC GEOMATICS LTD., PROJECT No. 161614291-111, DATED MARCH 1, 2022

SITE PLAN INFORMATION
SITE PLAN PROVIDED BY SRN ARCHITECTS LTD., PROJECT No. S21001, DATED JUNE 27, 2023

LEGAL INFORMATION
CALCULATED DRAFT PLAN PROVIDED BY STANTEC GEOMATICS LTD., PROJECT No. 161614291-111, DATED MAY 9, 2022

BENCH MARK
ELEVATIONS ARE REFERRED TO THE CANADIAN GEODETIC VERTICAL DATUM (CGVD-1928:1978) AND ARE DERIVED FROM BENCHMARK MONUMENT No. 196530071, HAVING A PUBLISHED ELEVATION OF 99.742 METRES

MINTO COMMUNITIES INC.
BARRHAVEN TOWN CENTRE
GLENROY GILBERT DRIVE RIOCAN AVENUE & CHAPMAN MILLS DRIVE EXTENSION

DSEL
120 Iber Road Unit 103
Slitsville, Ontario, K2S 1E9
Tel. (613) 836-0856
Fax. (613) 836-7183
www.DSEL.ca

S.L. MERRICK
100166223
2023-06-30
PROVINCE OF ONTARIO

Ottawa
110 Laurier Ave W
Ottawa, Ontario, K1P 1J1
Tel. (613) 580-2400
www.Ottawa.ca

CITY ROW GRADING PLAN EAST

DRAWN BY: AM	CHECKED BY: BC	PROJECT No. 15-816
DESIGNED BY: BC	CHECKED BY: SM	SHEET No. 11
SCALE: 1:500		

CITY PLAN No. 18822
CITY FILE No. D07-12-22-0104