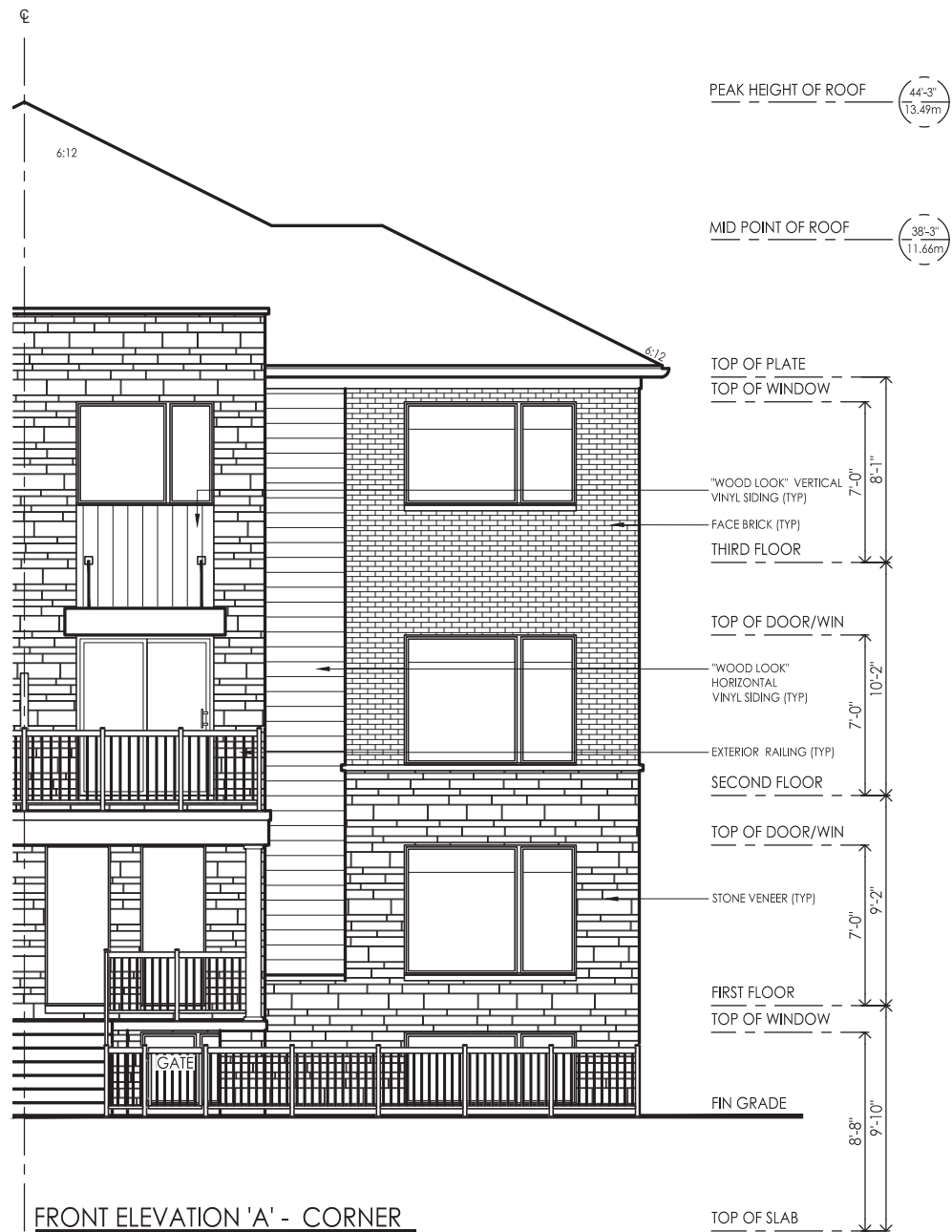


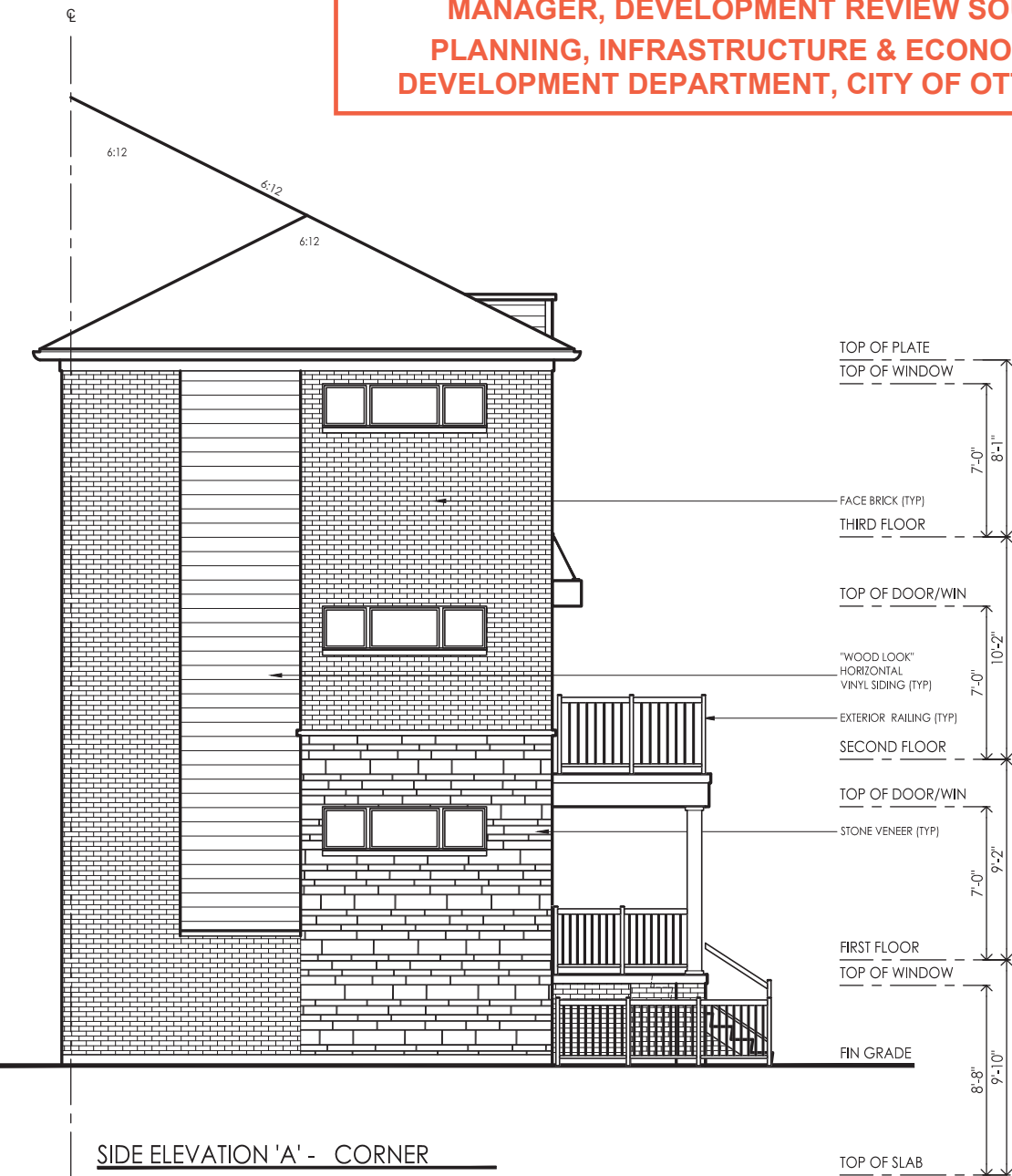
APPROVED
By Lily Xu at 11:45 am, Apr 03, 2024



LILY XU, MCIP, RPP
MANAGER, DEVELOPMENT REVIEW SOUTH
PLANNING, INFRASTRUCTURE & ECONOMIC
DEVELOPMENT DEPARTMENT, CITY OF OTTAWA



FRONT ELEVATION 'A' - CORNER



SIDE ELEVATION 'A' - CORNER

client	Minto Communities - Canada
project	Barrhaven Town Centre Ottawa
model	METRO TOWNS CORNER-ELEV. A
project #	S21001
scale	1/8" = 1'0"
page	B3

revisions	initials	date
1 ISSUED FOR REVIEW	EO	14-Nov-22
2 REVISED PER CLIENT	AB	13-Feb-23
3 REVISED PER CLIENT	AB	16-Feb-23
4 REVISED PER CLIENT	EO	22-Feb-23

File: C:\SRN\Standards\Temp\AcP\Hill_L29116\SRN\TOWNS CORNER-ELEV. A-REV.dwg, Plotted: Feb 22, 2024 by: ermanuelico

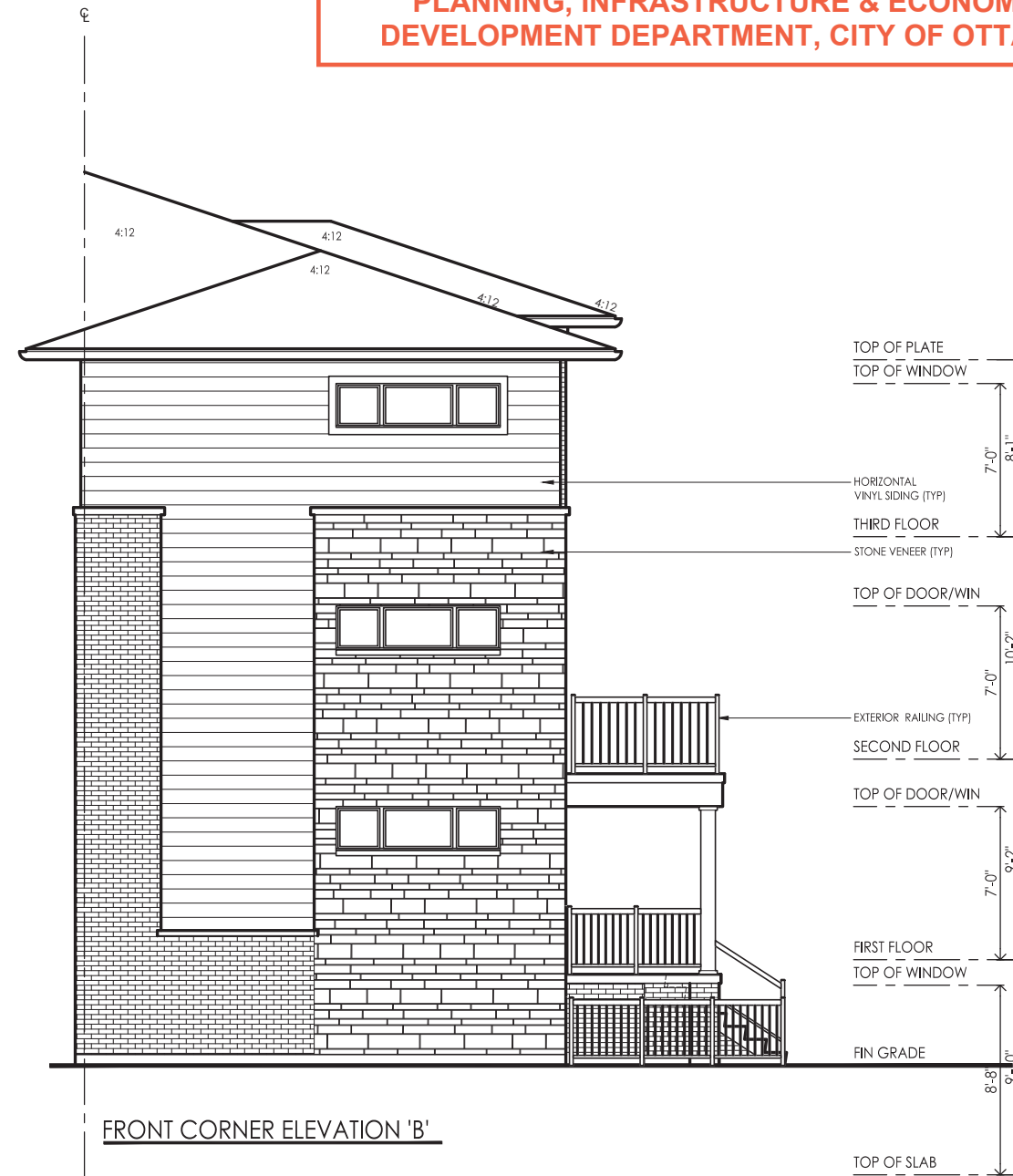
APPROVED
By Lily Xu at 11:45 am, Apr 03, 2024



LILY XU, MCIP, RPP
MANAGER, DEVELOPMENT REVIEW SOUTH
PLANNING, INFRASTRUCTURE & ECONOMIC
DEVELOPMENT DEPARTMENT, CITY OF OTTAWA

SRN
ARCHITECTS

WWW.SRNARCHITECTS.COM
Tel: 905-415-5515
WWW.THEPLUSGROUP.CA



client
Minto Communities - Canada

project
**Barrhaven Town Centre
Ottawa**

model
**METRO TOWNS
CORNER-ELEV. B**

project #
S21001

scale
1/8" = 1'0"

page

revisions	initials	date
1 ISSUED FOR REVIEW	EO	014-Nov-22
2 REVISED PER CLIENT	AB	13-Feb-23
3 REVISED PER CLIENT	AB	16-Feb-23
4 REVISED PER CLIENT	EO	22-Feb-23

APPROVED
By Lily Xu at 11:45 am, Apr 03, 2024



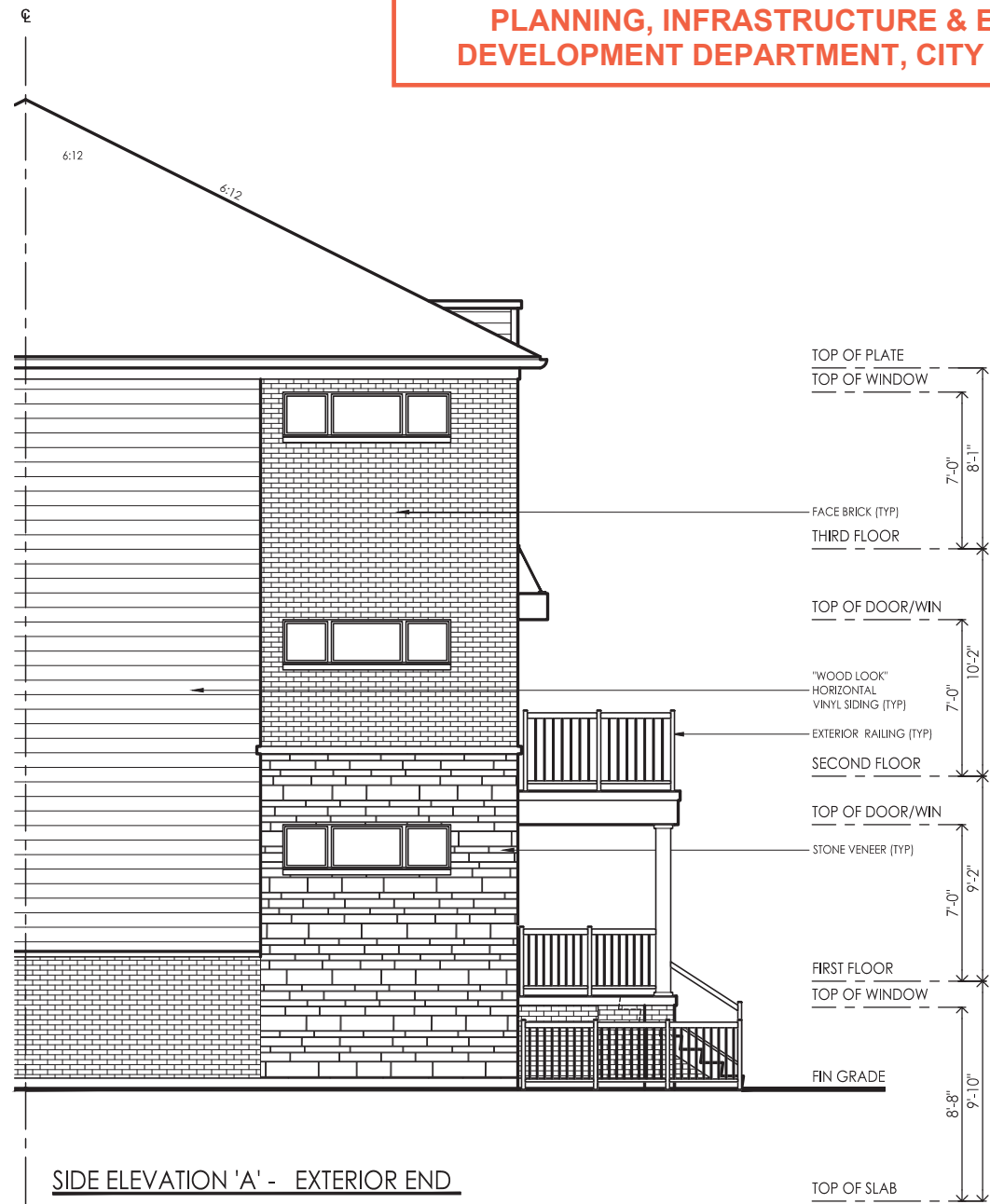
LILY XU, MCIP, RPP
MANAGER, DEVELOPMENT REVIEW SOUTH
PLANNING, INFRASTRUCTURE & ECONOMIC
DEVELOPMENT DEPARTMENT, CITY OF OTTAWA

SRN
ARCHITECTS

WWW.SRNARCHITECTS.COM
Tel: 905-415-5515
WWW.THEPLUSGROUP.CA



FRONT ELEVATION 'A' - EXTERIOR END



SIDE ELEVATION 'A' - EXTERIOR END

client	Minto Communities - Canada
project	Barrhaven Town Centre Ottawa
model	METRO TOWNS EXTERIOR END-ELEV. A
project #	S21001
scale	1/8" = 1'0"
page	B3

revisions	initials	date
1 ISSUED FOR REVIEW	EO	13-Jun-22
2 ISSUED FOR REVIEW	EO	14-Nov-22
3 REVISED PER CLIENT	AB	13-Feb-23
4 REVISED PER CLIENT	AB	16-Feb-23
5 REVISED PER CLIENT	EO	22-Feb-23

File: C:\SRN\Standards\Temp\AcP\hills_29216\21001\METRO TOWNS EXTERIOR END-ELEV. A-REV.dwg Plot: Feb 22, 2023 by: emmanuelleC

APPROVED

By Lily Xu at 11:45 am, Apr 03, 2024



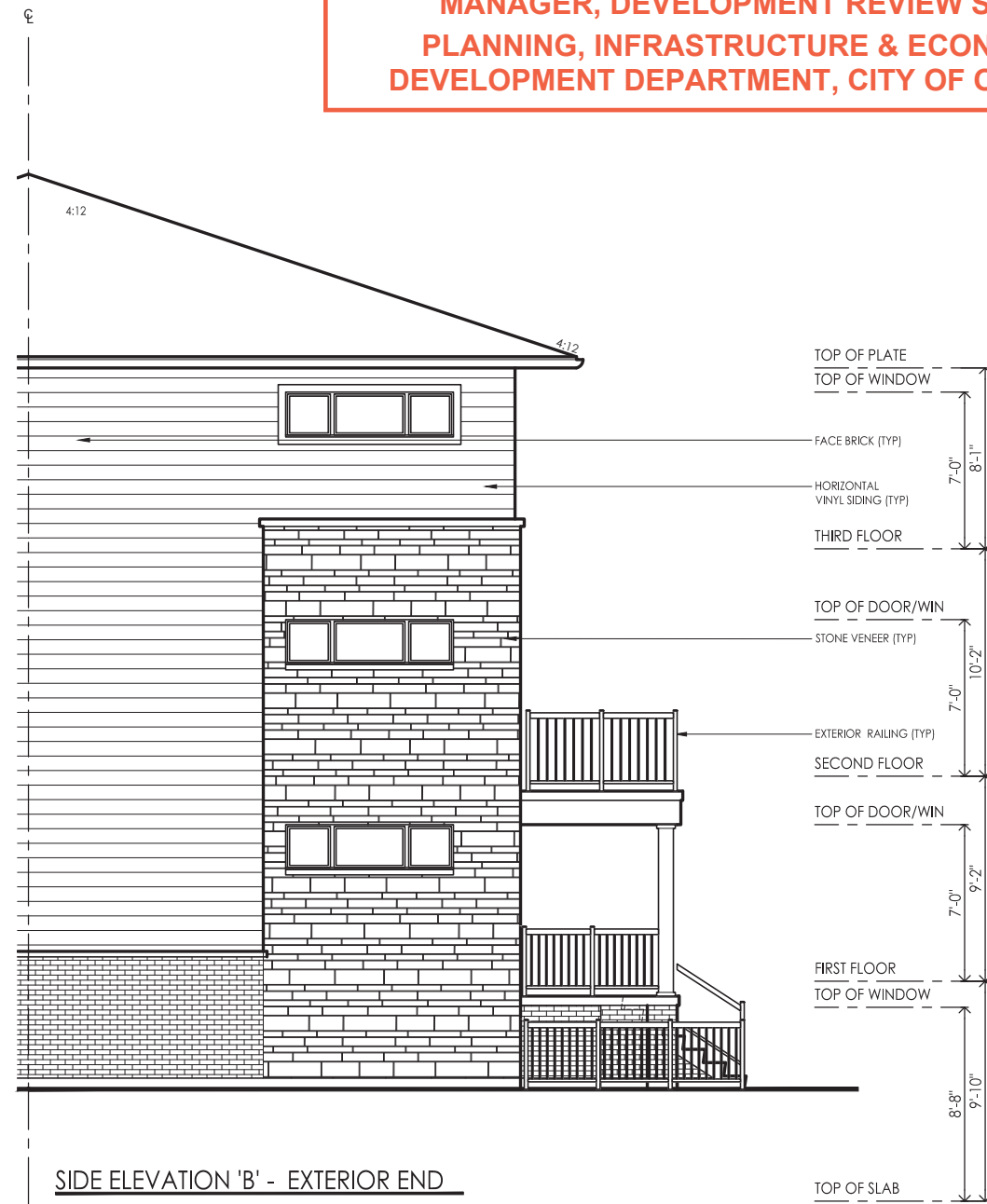
LILY XU, MCIP, RPP
MANAGER, DEVELOPMENT REVIEW SOUTH
PLANNING, INFRASTRUCTURE & ECONOMIC
DEVELOPMENT DEPARTMENT, CITY OF OTTAWA

SRN
ARCHITECTS

WWW.SRNARCHITECTS.COM
 Tel: 905-415-5515
 WWW.THEPLUSGROUP.CA



FRONT ELEVATION 'B' - EXTERIOR END



SIDE ELEVATION 'B' - EXTERIOR END

client	Minto Communities - Canada
project	Barrhaven Town Centre Ottawa
model	METRO TOWNS EXTERIOR END-ELEV. B
project #	S21001
scale	1/8" = 1'0"
page	

revisions	initials	date
1 ISSUED FOR REVIEW	EO	13-Jun-22
2 ISSUED FOR REVIEW	EO	14-Nov-22
3 REVISED PER CLIENT	AB	13-Feb-23
4 REVISED PER CLIENT	AB	16-Feb-23
5 REVISED PER CLIENT	EO	22-Feb-23

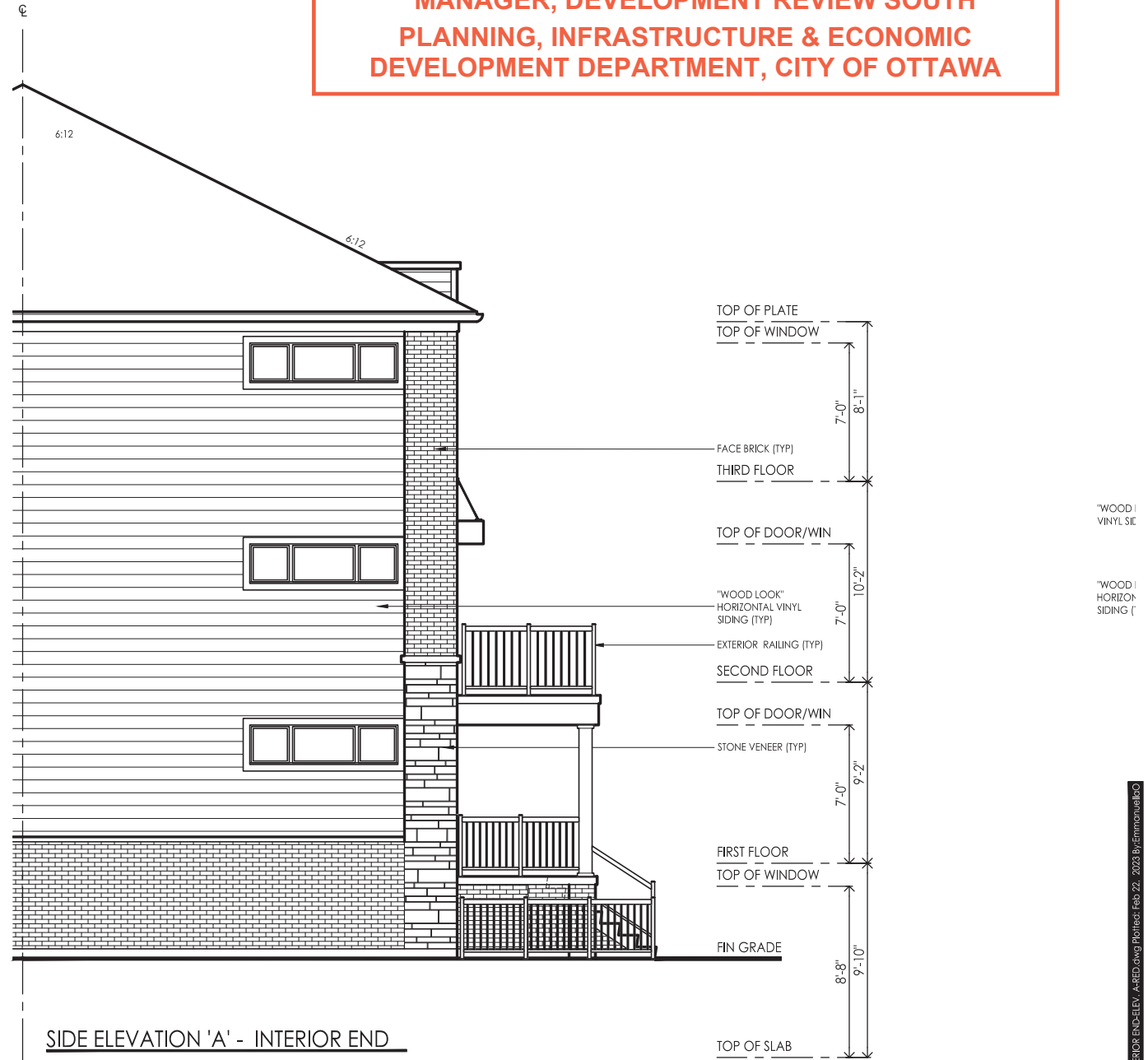
APPROVED
By Lily Xu at 11:45 am, Apr 03, 2024



LILY XU, MCIP, RPP
MANAGER, DEVELOPMENT REVIEW SOUTH
PLANNING, INFRASTRUCTURE & ECONOMIC
DEVELOPMENT DEPARTMENT, CITY OF OTTAWA



FRONT ELEVATION 'A' - INTERIOR END



SIDE ELEVATION 'A' - INTERIOR END

client	Minto Communities - Canada
project	Barrhaven Town Centre Ottawa
model	METRO TOWNS INTERIOR END-ELEV. A
project #	S21001
scale	1/8" = 1'0"
page	

revisions	initials	date
1 ISSUED FOR REVIEW	EO	13-Jun-22
2 ISSUED FOR REVIEW	EO	14-Nov-22
3 REVISED PER CLIENT	AB	13-Feb-23
4 REVISED PER CLIENT	AB	16-Feb-23
5 REVISED PER CLIENT	EO	22-Feb-23

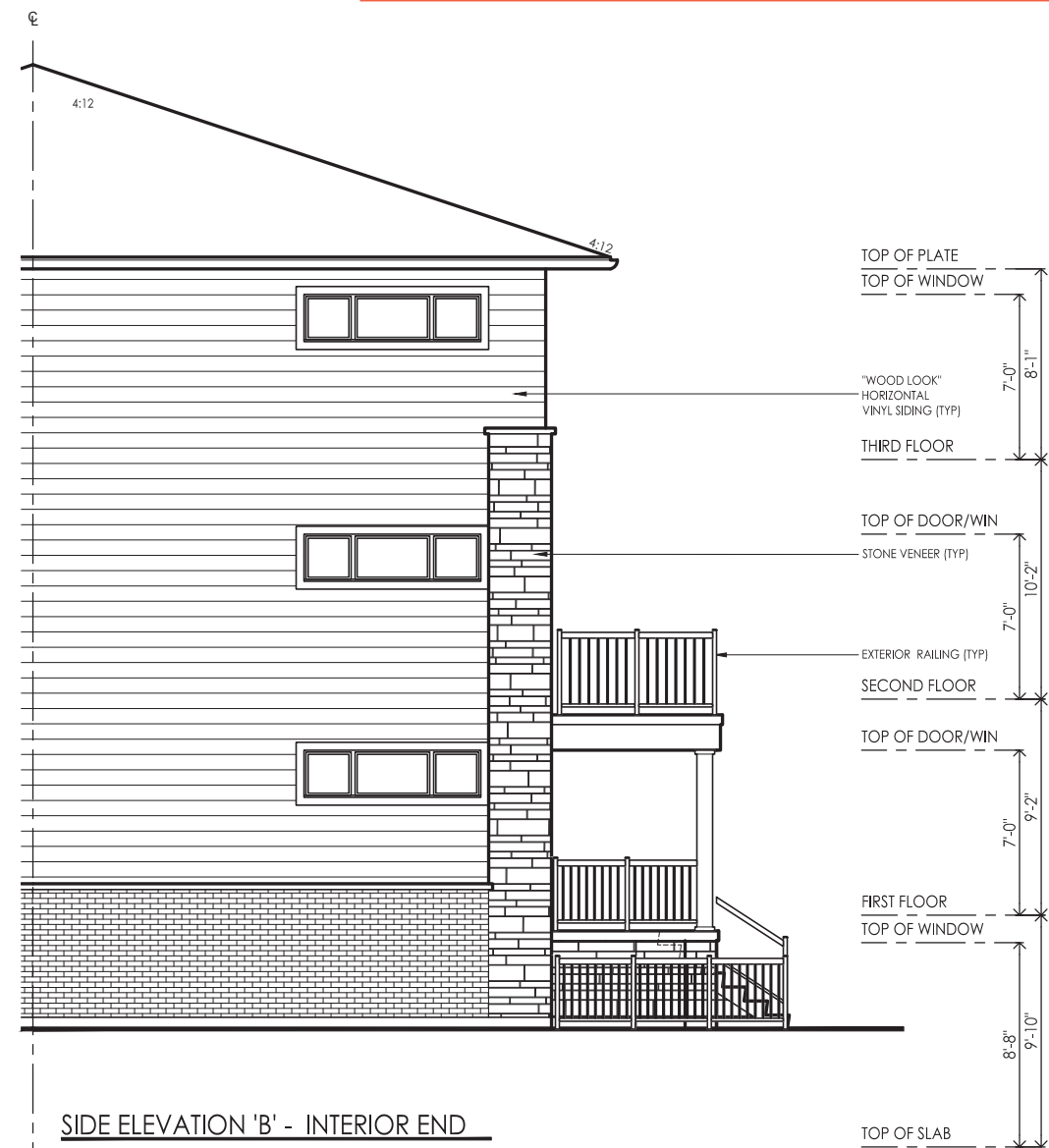
APPROVED
By Lily Xu at 11:45 am, Apr 03, 2024



LILY XU, MCIP, RPP
MANAGER, DEVELOPMENT REVIEW SOUTH
PLANNING, INFRASTRUCTURE & ECONOMIC
DEVELOPMENT DEPARTMENT, CITY OF OTTAWA



FRONT ELEVATION 'B' - INTERIOR END



SIDE ELEVATION 'B' - INTERIOR END

client	Minto Communities - Canada
project	Barrhaven Town Centre Ottawa
model	METRO TOWNS INTERIOR END-ELEV. B
project #	S21001
scale	1/8" = 1'0"
page	

revisions	initials	date
1 ISSUED FOR REVIEW	EO	13-Jun-22
2 ISSUED FOR REVIEW	EO	14-Nov-22
3 REVISED PER CLIENT	AB	13-Feb-23
4 REVISED PER CLIENT	AB	16-Feb-23
5 REVISED PER CLIENT	EO	22-Feb-23

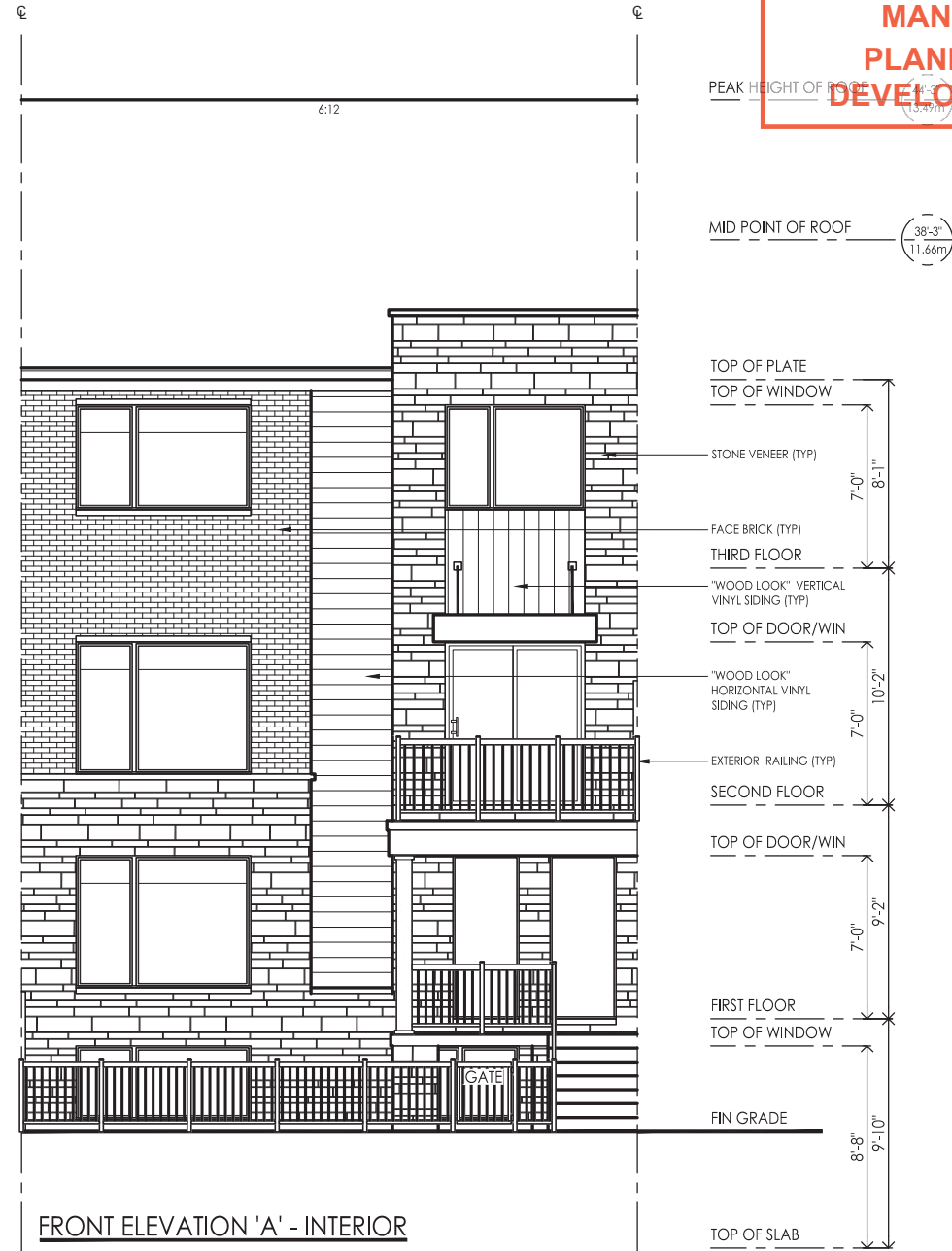
APPROVED
By Lily Xu at 11:46 am, Apr 03, 2024



LILY XU, MCIP, RPP
MANAGER, DEVELOPMENT REVIEW SOUTH
PLANNING, INFRASTRUCTURE & ECONOMIC
DEVELOPMENT DEPARTMENT, CITY OF OTTAWA

SRN
ARCHITECTS

WWW.SRNARCHITECTS.COM
Tel: 905-415-5515
WWW.THEPLUSGROUP.CA



FRONT ELEVATION 'A' - INTERIOR

client	Minto Communities - Canada
project	Barrhaven Town Centre Ottawa
model	METRO TOWNS INTERIOR-ELEV. A
project #	S21001
scale	1/8" = 1'0"
page	B3

revisions	initials	date
1 ISSUED FOR REVIEW	EO	13-Jun-22
2 ISSUED FOR REVIEW	EO	14-Nov-22
3 REVISED PER CLIENT	AB	13-Feb-23
4 REVISED PER CLIENT	AB	16-Feb-23
5 REVISED PER CLIENT	EO	22-Feb-23

File: C:\SRN\Standards\Temp\AcP\Hill_29216\21001\METRO TOWNS INTERIOR-ELEV. A-REV.dwg Plotted Feb 22, 2024 By: emmanuelco

APPROVED
By Lily Xu at 11:46 am, Apr 03, 2024



LILY XU, MCIP, RPP
MANAGER, DEVELOPMENT REVIEW SOUTH
PLANNING, INFRASTRUCTURE & ECONOMIC
DEVELOPMENT DEPARTMENT, CITY OF OTTAWA



WWW.SRNARCHITECTS.COM
Tel: 905-415-5515
WWW.THEPLUSGROUP.CA



FRONT ELEVATION 'B'

client	Minto Communities - Canada
project	Barrhaven Town Centre Ottawa
model	METRO TOWNS INTERIOR-ELEV. B
project #	S21001
scale	1/8" = 1'0"
page	B3

revisions	initials	date
1 ISSUED FOR REVIEW	EO	13-Jun-22
2 ISSUED FOR REVIEW	EO	14-Nov-22
3 REVISE PER CLIENT	AB	13-Feb-23
4 REVISED PER CLIENT	AB	16-Feb-23
5 REVISED PER CLIENT	EO	22-Feb-23

File: C:\SRN\Standards\Temp\AcP\Hill_26852\21001\METRO TOWNS INTERIOR-ELEV. B-RED.dwg Plotted: Feb 22, 2023 By: jermomuelico