




SCALE 1 : 150



0 5 10 15 Metres

115 Walgreen Road, RR3, Carp, ON K0A 1L0
Tel: 613-836-2184 Fax: 613-836-3742
www.mcintoshperry.com

SMART LIVING PROPERTIES
226 ARGYLE AVENUE
OTTAWA, ON K2P 1B9

1:150	Project Number:	CCO-22-5087
By: FV		
By: CH	Drawing Number:	C101
By: FV		

#18783

1 : 150

CONDITION OR BETTER UNLESS OTHERWISE SPECIFIED

- ## EROSION AND SEDIMENT CONTROL

1. THE CONTRACTOR SHALL IMPLEMENT BEST MANAGEMENT PRACTICES (BMPs) TO PREVENT OR PROTECT OF THE AREA DRAINAGE SYSTEM AND THE RECEIVING WATERCOURSE, DURING CONSTRUCTION ACTIVITIES. THIS INCLUDES LIMITING THE AMOUNT OF EXPOSED SOIL TO MINIMIZE EROSION AND ACCUMULATED SEDIMENT WITH AN OVERFLOW UNDER GRATE OR COVER) TO BE IMPLEMENTED DURING CONSTRUCTION ON ALL PORTIONS OF THE CONSTRUCTION SITE. CATCHBASINS AND CATCHBASIN MANHOLES AND OTHER SEDIMENT TRAPS, NO RECYCLED GEOSECK MATERIAL SHALL BE PERMITTED FOR USE ON SITE. THE CONTRACTOR SHALL MONITOR THE CONSTRUCTION TO IMPLEMENT APPROPRIATE EROSION AND SEDIMENT CONTROL MEASURES MAY BE SUBJECT TO PENALTIES IMPOSED BY ANY APPLICABLE REGULATORY AGENCY.
2. AT THE DISCRETION OF THE PROJECT MANAGER OR PROJECT SUPERVISOR, AUTOMATICALLY OPERATING DEVICES SHALL BE INSTALLED AT DESIGNATED LOCATIONS.
3. FOR SILT FENCE BARRIER, USE OPSD 219 110. GEOTEXTILE FOR SILT FENCE AS PER OPSD 1860, TABLE 3.
4. EXCEPT AS PROVIDED IN PARAGRAPHS 4.1., AND 4.2. BELOW, STABILIZATION MEASURES SHALL BE INITIATED AS SOON AS FEASIBLE IN PORTIONS OF THE SITE WHERE CONSTRUCTION ACTIVITIES HAVE TEMPORARILY OR PERMANENTLY CEASED. STABILIZATION MEASURES SHALL BE INITIATED WITHIN 14 DAYS AFTER THE CONSTRUCTION ACTIVITY HAS TEMPORARILY OR PERMANENTLY CEASED.
5. 1. WHERE THE CONSTRUCTION STOPPING MEASURES BY THE 14TH DAY AFTER CONSTRUCTION ACTIVITY TEMPORARILY OR PERMANENTLY CEASE IS PRECIPITATED BY SNOW COVER, STABILIZATION MEASURES SHALL BE INITIATED AS SOON AS FEASIBLE.
6. 2. WHERE CONSTRUCTION ACTIVITY WILL RESUME ON A PORTION OF THE SITE WITHIN 21 DAYS FROM THE DATE ACTIVITIES CEASE, STABILIZATION MEASURES SHALL BE INITIATED WITHIN 14 DAYS AFTER CONSTRUCTION ACTIVITY TEMPORARILY CEASED.
7. 3. WHERE CONSTRUCTION ACTIVITY WILL RESUME ON A PORTION OF THE SITE WITHIN 21 DAYS FROM THE DATE ACTIVITIES CEASE, STABILIZATION MEASURES SHALL BE INITIATED ON THAT PORTION OF SITE BY THE 14TH DAY AFTER CONSTRUCTION ACTIVITY TEMPORARILY CEASED.
8. 4. SEDIMENTATION, DRAINAGE, AND EROSION CONTROL MEASURES SHALL BE REMOVED IN A MANNER THAT AVOIDS CEASURES OF THE FOLLOWING:
 - 5.1. FOR LIGHT-DUTY SEDIMENT BARRIERS, ACCUMULATED SEDIMENT SHALL BE REMOVED ONCE IT REACHES THE LESSER OF THE FOLLOWING:
 - 5.1.1. A DEPTH OF ONE-HALF THE EFFECTIVE HEIGHT OF THE CONTROL MEASURE.
 - 5.1.2. A DEPTH OF 300 MM IMMEDIATELY UPSTREAM OF THE CONTROL MEASURE.
 - 5.2. FOR ALL CONTROL MEASURES, ACCUMULATED SEDIMENT SHALL BE REMOVED AS NECESSARY TO PERFORM MAINTENANCE AND PREVENT DAMAGE TO THE CONTROL MEASURE.
 - 5.3. ACCUMULATED SEDIMENT SHALL BE REMOVED PRIOR TO THE REMOVAL OF THE CONTROL MEASURE.
 - 5.4. ACCUMULATED SEDIMENT SHALL BE REMOVED AND DISPOSED OF AS PER OPSD 180.
6. ALL TEMPORARY EROSION AND SEDIMENT CONTROL MEASURES SHALL BE MONITORED TO ENSURE THEY ARE IN EFFECTIVE WORKING ORDER. THE CONDITION OF THE CONTROL MEASURES SHALL BE MONITORED PRIOR TO ANY FORECAST STORM EVENT AND FOLLOWING A STORM EVENT.
7. DUST CONTROL MEASURES SHOULD BE CONSIDERED PRIOR TO CLEARING AND GRADING. THE USE OF WATER, CALCIUM CHLORIDE PAKES/SOLUTION OR MAGNESIUM CHLORIDE FLAKES/SODAS OR OTHER DUST SUPPRESSANTS AS PER OPSD 506. THIS IS TO LIMIT WIND EROSION OF SOILS WHICH MAY TRANSPORT SEDIMENTS TO AREAS, WHERE THE SEDIMENT MAY BE RECEIVING WATER BY THE NEXT RAINSTORM.
8. ALL 'GREEN AREAS' TO BE TREATED WITH 150mm TOPSOIL AND SOD AS SOON AS FEASIBLE, AS PER OPSD 570.
9. ALL DISTURBED AREAS TO BE RESTORED TO ORIGINAL CONDITION OR BETTER UNLESS OTHERWISE SPECIFIED.
10. STOCKPILED MATERIAL IS TO BE STORED AWAY FROM POTENTIAL RECEIVERS (E.G. STORM CATCHBASINS, MANHOLES), AND BE SURROUNDED BY EROSION CONTROL MEASURES WHERE MATERIAL IS LEFT IN PLACE IN EXCESS OF 14 DAYS.
11. IF REQUIRED, DEWATERING/SETTLING BASINS SHALL BE CONSTRUCTED AS PER OPSD 219 240 AND LOCATED ON FLAT GRADE UPSTREAM OF OTHER EXISTING MITIGATION MEASURES. WATERCOURSES SHALL NOT BE DIVERTED, OR

SEDIMENT TO THE DOWNSTREAM SIDE OF THE CONTROL MEASURE AND AVOIDS DAMAGE TO THE CONTROL MEASURE. THE MEASURE SHALL BE ADJUSTED TO THE LEVEL OF THE GRADE EXISTING AT THE TIME THE CONTROL MEASURE WAS CONSTRUCTED AND BE ACCORDING TO THE FOLLOWING:


- 1. FOR LIGHT-UTY SEDIMENT BARRIERS, ACCUMULATED SEDIMENT SHALL BE REMOVED ONCE IT REACHES THE LESSER OF THE FOLLOWING:
 - 1.1. A DEPTH OF ONE-HALF THE EFFECTIVE HEIGHT OF THE CONTROL MEASURE.
 - 1.2. A DEPTH OF 300 MM IMMEDIATELY UPSTREAM OF THE CONTROL MEASURE.

FOR ALL CONTROL MEASURES, ACCUMULATED SEDIMENT SHALL BE REMOVED AS NECESSARY TO PERFORM MAINTENANCE REPAIRS.

ACCUMULATED SEDIMENT SHALL BE REMOVED PRIOR TO THE REMOVAL OF THE CONTROL MEASURE. ACCUMULATED SEDIMENT IS TO BE REMOVED AND DISPOSED OF AS PER OPSS 180.

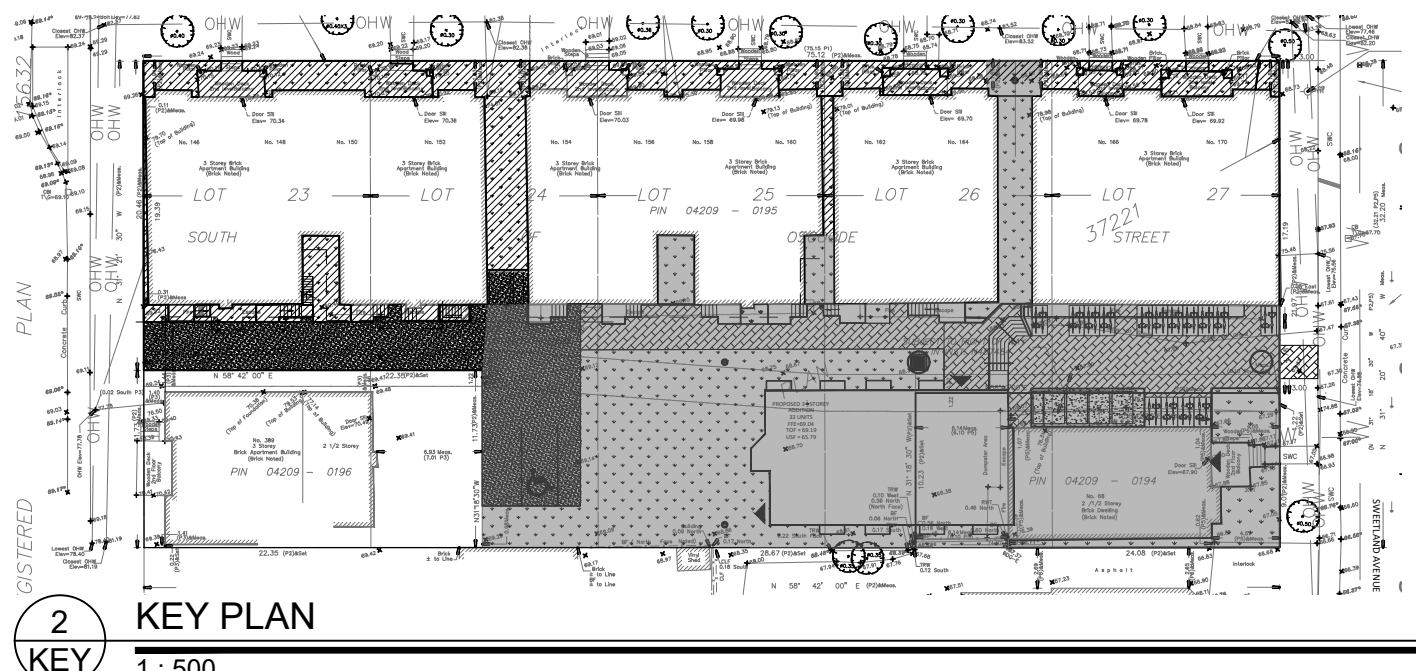
BLOCKED, AND TEMPORARY WATERCOURSE CROSSINGS SHALL NOT BE CONSTRUCTED OR UTILIZED, UNLESS OTHERWISE SPECIFIED IN THE CONTRACT. IF CLOSURE OF ANY PERMANENT WATER PASSAGE IS NECESSARY, THE CONTRACTOR SHALL RELEASE ANY STRANDED FISH TO THE OPEN PORTION OF THE WATERCOURSE WITHOUT HARM.

12. ALL EROSION AND SEDIMENT CONTROL MEASURES SHALL CONFORM TO OPSS 577
13. WHERE DEWATERING IS REQUIRED, THE DISCHARGED WATER SHALL BE CONTROLLED IN ACCORDANCE WITH OPSS 518.
14. ALL SETTLING/FILTRATION BASINS SHALL BE EQUIPPED WITH TERRAFIX 270R GEOTEXTILE (OR APPROVED EQUIVALENT) AND SHALL BE CLEANED AND REPLACED AS REQUIRED.



ANDREW MCCREIGHT
MANAGER, DEVELOPMENT REVIEW CENTRAL
PLANNING, DEVELOPMENT & BUILDING SERVICES
DEPARTMENT, CITY OF OTTAWA

APPROVED
By Andrew McCreight at 8:12 am, Jun 12, 2025



KEY PLAN

1 : 500

LEGEND

PROPOSED LANDSCAPING WORKS MATCH EXISTING ELEVATIONS

PROPOSED GRADING PER
DRAWING C101