

Page Setup: ---  
 Drawing Frame: 790mm x 544mm City of Ottawa 2008 (Rev.0)  
 Pict Date: Tuesday, October 3, 2023 10:05:48 AM  
 Last Saved: Friday, September 22, 2023 10:00:05 AM  
 Consultant's Information: H:\ISO\72699\1000\DWG\51-Signage\72699-phi-signage-770 Brookfield.dwg



**TRANSPORTATION ENGINEERING SERVICES  
SIGNS / PAVEMENT MARKINGS**

- REVIEWED / RESUBMIT FOR CHANGES
- REVIEWED and ACCEPTED

By Emmett Proulx Date 2023 / 10 / 05



**APPROVED**  
By Lily Xu at 11:16 am, Feb 29, 2024

*[Signature]*  
LILY XU, MCIP, RPP  
MANAGER, DEVELOPMENT REVIEW SOUTH  
PLANNING, INFRASTRUCTURE & ECONOMIC  
DEVELOPMENT DEPARTMENT, CITY OF OTTAWA

770 Brookfield Road	
Residential Development	
Existing Pavement Markings and Signage	Dwg. No. 478399 Sheet 1 of 3
<b>PARSONS</b>	
Des.	Chk'd.
Dwn. AEB	Chk'd.
Scale: N.T.S.	

**NOTE:** The location of utilities is approximate only, the exact location should be determined by consulting the municipal authorities and utility companies concerned. The contractor shall prove the location of utilities and shall be responsible for adequate protection from damage.

REVISIONS	No.	Description	By	Date (dd/mm/yy)
	01	Issued for City Review	AEB	26/10/22
	02	Updated As Per City Comments	AEB	27/01/23
	03	Updated As Per City Comments	AEB	23/03/23
	04	Updated As Per City Comments	AEB	19/09/23
	05	Updated As Per City Comments	AEB	02/10/23

← TO RIVERSIDE

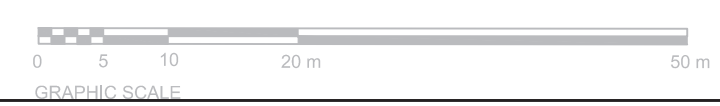
EXISTING PAVEMENT MARKINGS

CANADA POST  
ZONING  
MCB (399) h1, h2, h3 F(2.0) S135

EXISTING FIRE HYDRANT

EXISTING FIRE HYDRANT

TO AIRPORT PARKWAY →



DWG:###-###-###

Page Setup: ---  
 Drawing Frame: 790mm x 544mm City of Ottawa 2008 (Rev.0)  
 Plot Date: Tuesday, October 3, 2023 9:59:44 AM  
 Last Saved: Friday, September 22, 2023 10:00:05 AM  
 Consultant's Information: H:\ISCI\72699\1000\DWG\51-Signage\72699-pin-signage-770 Brookfield.dwg



**TRANSPORTATION ENGINEERING SERVICES  
SIGNS / PAVEMENT MARKINGS**

- REVIEWED / RESUBMIT FOR CHANGES
- REVIEWED and ACCEPTED

By Emmett Proulx Date 2023 / 10 / 05



**APPROVED**  
By Lily Xu at 11:16 am, Feb 29, 2024

*Lily Xu*  
LILY XU, MCIP, RPP  
MANAGER, DEVELOPMENT REVIEW SOUTH  
PLANNING, INFRASTRUCTURE & ECONOMIC  
DEVELOPMENT DEPARTMENT, CITY OF OTTAWA

770 Brookfield Road

Residential Development

Existing Pavement Markings and Signage

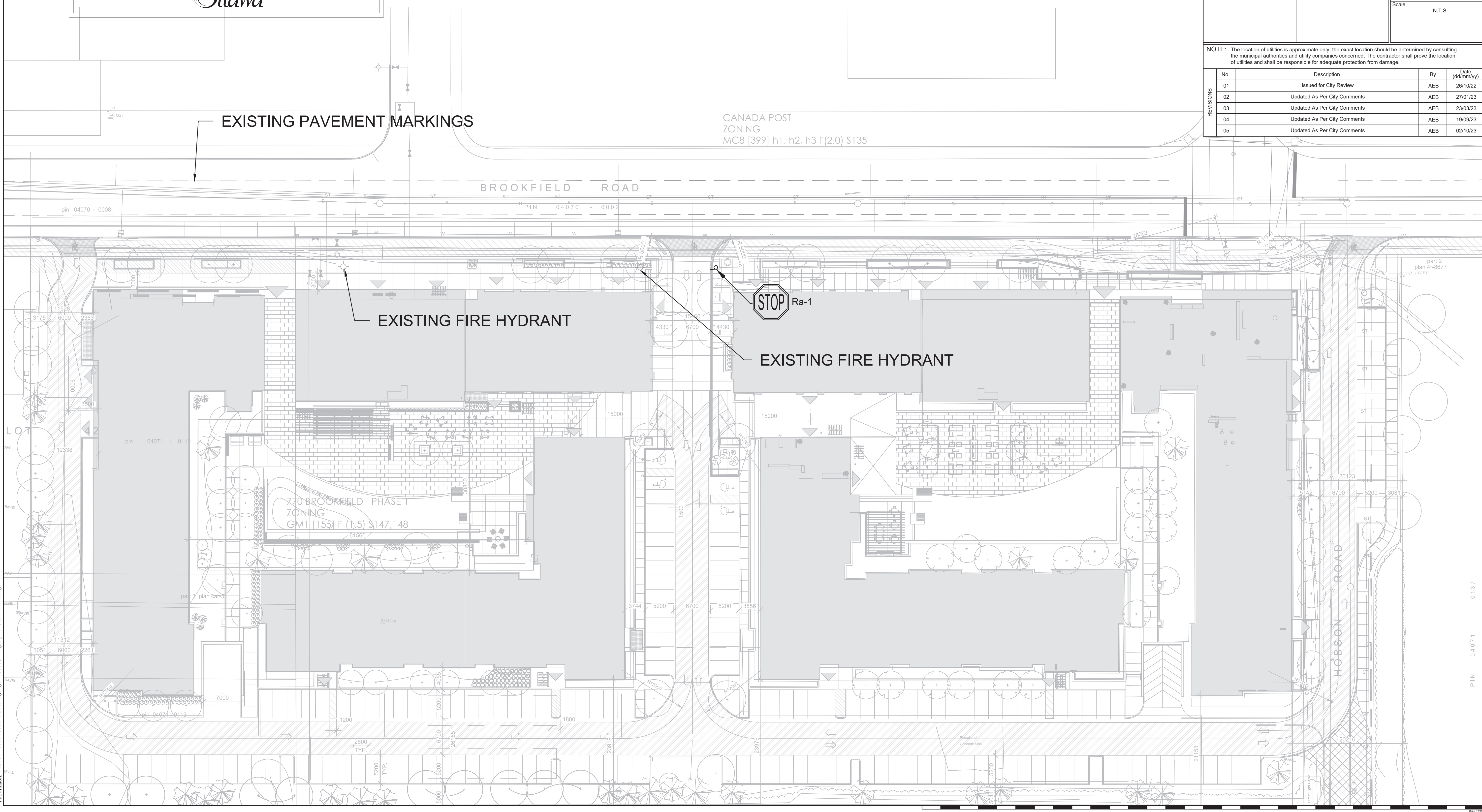
478399 Dwg. No. 002  
Sheet 2 of 3



Des.	Chk'd.
Dwn.	Chk'd.
AEB	
Scale:	N.T.S.

**NOTE:** The location of utilities is approximate only, the exact location should be determined by consulting the municipal authorities and utility companies concerned. The contractor shall prove the location of utilities and shall be responsible for adequate protection from damage.

No.	Description	By	Date (dd/mm/yy)
01	Issued for City Review	AEB	26/10/22
02	Updated As Per City Comments	AEB	27/01/23
03	Updated As Per City Comments	AEB	23/03/23
04	Updated As Per City Comments	AEB	19/09/23
05	Updated As Per City Comments	AEB	02/10/23



PIN 04071 - 0137  
DWG ##-##-###



# TRANSPORTATION ENGINEERING SERVICES SIGNS / PAVEMENT MARKINGS

- REVIEWED / RESUBMIT FOR CHANGES
- REVIEWED and ACCEPTED

By Emmett Proulx Date 2023 / 10 / 05



**APPROVED**  
By Lily Xu at 11:16 am, Feb 29, 2024

*Lily Xu*

**LILY XU, MCIP, RPP**  
MANAGER, DEVELOPMENT REVIEW SOUTH  
PLANNING, INFRASTRUCTURE & ECONOMIC  
DEVELOPMENT DEPARTMENT, CITY OF OTTAWA

770 Brookfield Road

Residential Development

Proposed Pavement Markings and Signage

478399 Dwg. No. 003  
Sheet 3 of 3



Des.	Chk'd.
Dwn.	Chk'd.
AEB	
Scale:	N.T.S

NOTE: The location of utilities is approximate only, the exact location should be determined by consulting the municipal authorities and utility companies concerned. The contractor shall prove the location of utilities and shall be responsible for adequate protection from damage.

REVISIONS	No.	Description	By	Date (dd/mm/yy)
	01	Issued for City Review	AEB	26/10/22
	02	Updated As Per City Comments	AEB	27/01/23
	03	Updated As Per City Comments	AEB	23/03/23
	04	Updated As Per City Comments	AEB	19/09/23
	05	Updated As Per City Comments	AEB	02/10/23

