

UNIT COUNT

SUBJECT	BLDG 1	BLDG 2	BLDG 3	BLDG 4	BLDG 5	BLDG 6	BLDG 7	BLDG 8	BLDG 9	BLDG 10	TOTAL
1	16	2	9	3	1	2	3	3	3	3	33
2	32	5	13	6	2	4	6	6	6	6	63
3	32	5	13	6	2	4	6	6	6	6	63
4	32	5	13	6	2	4	6	6	6	6	63
5	32	5	13	6	2	4	6	6	6	6	63
6	32	5	13	6	2	4	6	6	6	6	63
7	32	5	13	6	2	4	6	6	6	6	63
8	32	5	13	6	2	4	6	6	6	6	63
9	32	5	13	6	2	4	6	6	6	6	63
10	32	5	13	6	2	4	6	6	6	6	63
GRAND TOTAL	319	39	117	48	14	56	78	78	78	78	401

PHASE 1 Area: Gross Building (GB) - Area taken to outside of exterior wall.

SUBJECT	BLDG 1	BLDG 2	BLDG 3	BLDG 4	BLDG 5	BLDG 6	BLDG 7	BLDG 8	BLDG 9	BLDG 10	TOTAL
1	16	2	9	3	1	2	3	3	3	3	33
2	32	5	13	6	2	4	6	6	6	6	63
3	32	5	13	6	2	4	6	6	6	6	63
4	32	5	13	6	2	4	6	6	6	6	63
5	32	5	13	6	2	4	6	6	6	6	63
6	32	5	13	6	2	4	6	6	6	6	63
7	32	5	13	6	2	4	6	6	6	6	63
8	32	5	13	6	2	4	6	6	6	6	63
9	32	5	13	6	2	4	6	6	6	6	63
10	32	5	13	6	2	4	6	6	6	6	63
GRAND TOTAL	319	39	117	48	14	56	78	78	78	78	401

SURVEY INFORMATION TAKE FROM:

PROPERTY ADDRESS: 71679 BROOKFIELD ROAD
 ZONING: GM (SSE F1) S147, 148
 SITE AREA (ZONING SOX 147): 24,855 m²
 SITE AREA (SURVEY): 24,855 m²

PROPOSED USE: MIXED USE / RESIDENTIAL APARTMENT BUILDING AND RETAIL.

BUILDING FOOTPRINT: (ABOVE GRADE)

BLOCK	AREA (m ²)	FLOOR
BLOCK A (PH1)	2,263.5	1
BLOCK B (PH1)	1,892.0	1
BLOCK C (PH1)	1,892.0	1
BLOCK D (PH1)	1,892.0	1
BLOCK E (PH1)	1,892.0	1
BLOCK F (PH1)	1,892.0	1
BLOCK G (PH1)	1,892.0	1
BLOCK H (PH1)	1,892.0	1
BLOCK I (PH1)	1,892.0	1
BLOCK J (PH1)	1,892.0	1
TOTAL	18,360.0	1

ZONING SUMMARY: REQUIRED PROVIDED

RESIDENTIAL UNITS PHASE 1
 RESIDENTIAL UNITS PHASE 1: 420 UNITS
 TOTAL RESIDENTIAL UNITS PHASE 1+2: 420 UNITS
 FS PHASE 1: 1.5
 FS PHASE 2: 1.8

GA (GFR) FS CALCULATION:

PHASE	AREA (m ²)	FLOOR
PHASE 1	862	1
PHASE 2	1,847	1
TOTAL	2,709	1

PHASE 2 Area: Gross Building (GB) - Area taken to outside of exterior wall.

SUBJECT	BLDG 1	BLDG 2	BLDG 3	BLDG 4	BLDG 5	BLDG 6	BLDG 7	BLDG 8	BLDG 9	BLDG 10	TOTAL
1	16	2	9	3	1	2	3	3	3	3	33
2	32	5	13	6	2	4	6	6	6	6	63
3	32	5	13	6	2	4	6	6	6	6	63
4	32	5	13	6	2	4	6	6	6	6	63
5	32	5	13	6	2	4	6	6	6	6	63
6	32	5	13	6	2	4	6	6	6	6	63
7	32	5	13	6	2	4	6	6	6	6	63
8	32	5	13	6	2	4	6	6	6	6	63
9	32	5	13	6	2	4	6	6	6	6	63
10	32	5	13	6	2	4	6	6	6	6	63
GRAND TOTAL	319	39	117	48	14	56	78	78	78	78	401

NET AREA:
 BLOCK A (PH1) 977.8 m²
 BLOCK B (PH1) 827.8 m²
 BLOCK C (PH1) 827.8 m²
 BLOCK D (PH1) 827.8 m²
 BLOCK E (PH1) 827.8 m²
 BLOCK F (PH1) 827.8 m²
 BLOCK G (PH1) 827.8 m²
 BLOCK H (PH1) 827.8 m²
 BLOCK I (PH1) 827.8 m²
 BLOCK J (PH1) 827.8 m²
TOTAL: 2,433 m²

OWNER
ATLANTIS INVESTMENTS INC.

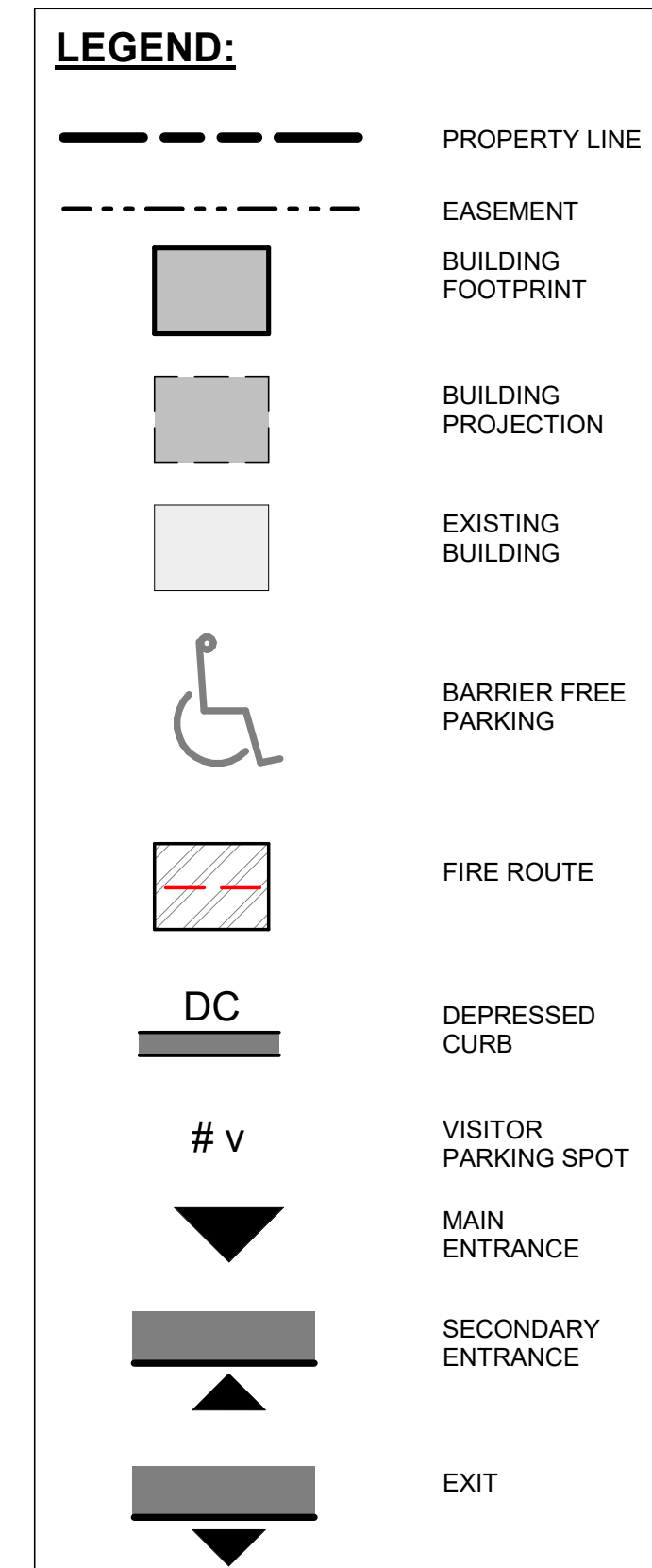
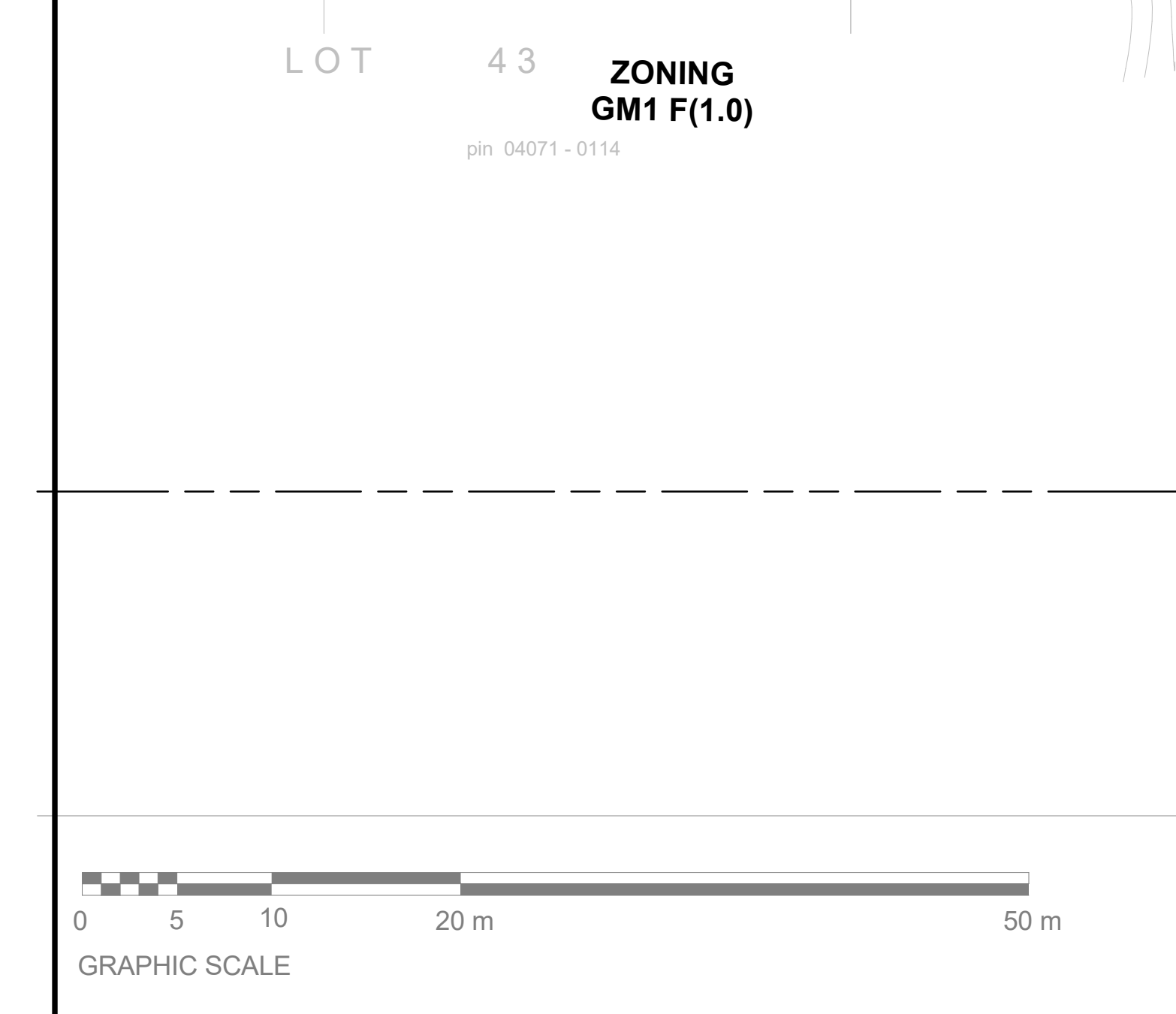
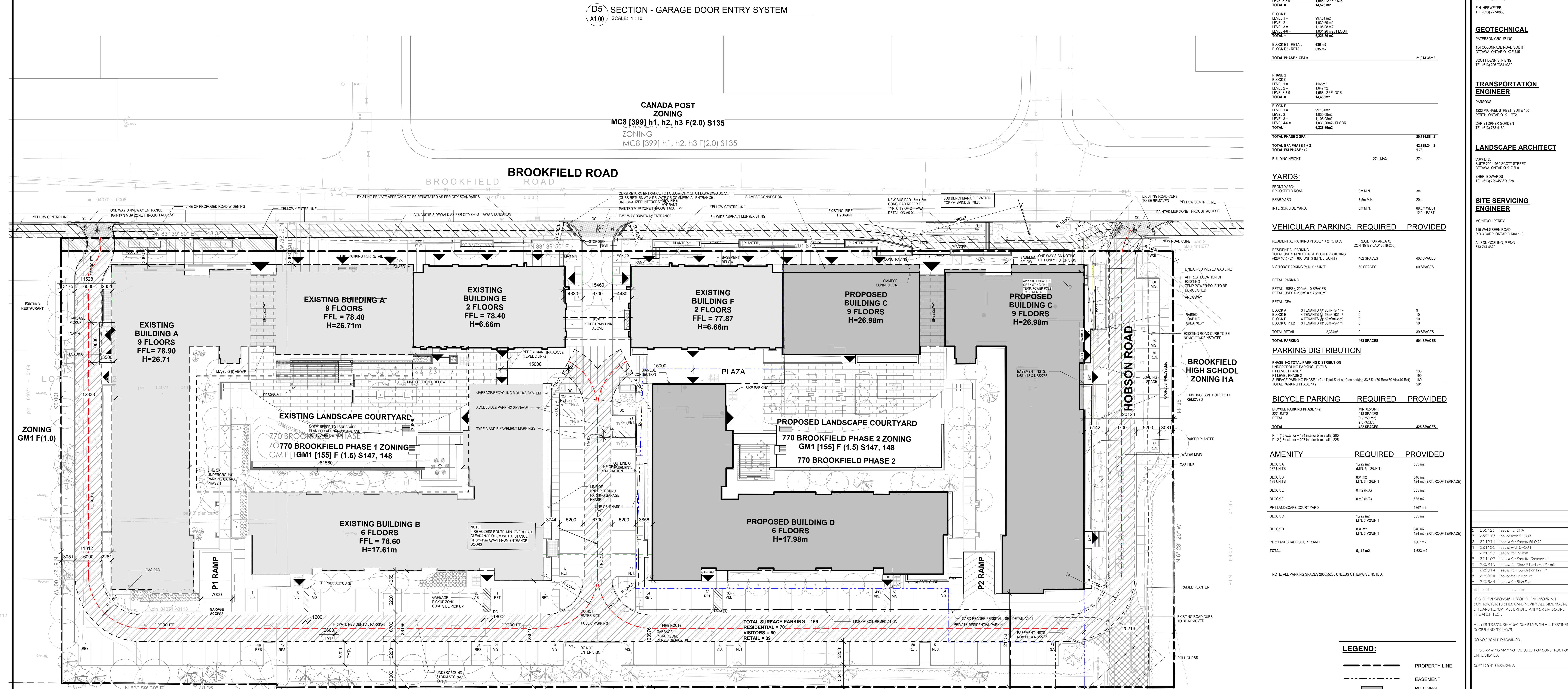
PROJECT MANAGER
TURNER & TOWNSEND
170 LAURIER AVE. WEST, Suite 604,
OTTAWA, ON
K1P 9P5
SHEILA STALLARD
TEL: (613) 235-4554

SURVEYOR
ANNIS O'SULLIVAN VOLLEBECK LTD.
14 CONROBERT GATE, SUITE 800
OTTAWA, ONTARIO
E.H. HERVEYER
TEL: (613) 727-6990

GEOTECHNICAL
PATERSON GROUP INC.
154 COLMARNE ROAD SOUTH
OTTAWA, ONTARIO K2E 7L5
SCOTT DENNIS - P. ENG.
TEL: (613) 235-7813

TRANSPORTATION ENGINEER
PARSONS
1325 MICHAEL STREET, SUITE 100
PERTH, ONTARIO K1J 7T2
CHRISTOPHER GORDEN
TEL: (613) 724-1400

LANDSCAPE ARCHITECT
MONROE PERRY
115 WALGREEN ROAD
R.R.3 CARP, ONTARIO K6A 1G0
ALISON GOULD, P. ENG.
TEL: (613) 229-4338 x 228



AMENITY REQUIRED PROVIDED

BLOCK	REQUIRED	PROVIDED
BLOCK A	1,722 m ² (MIN. 6 m ² /UNIT)	855 m ²
BLOCK B	834 m ² (MIN. 6 m ² /UNIT)	346 m ²
BLOCK C	124 m ² (EXT. ROOF TERRACE)	124 m ²
BLOCK D	0 m ² (N/A)	0 m ²
BLOCK E	0 m ² (N/A)	0 m ²
BLOCK F	0 m ² (N/A)	0 m ²
PH1 LANDSCAPE COURT YARD	1,887 m ²	1,887 m ²
BLOCK G	1,722 m ² (MIN. 6 m ² /UNIT)	855 m ²
BLOCK H	834 m ² (MIN. 6 m ² /UNIT)	346 m ²
BLOCK I	124 m ² (EXT. ROOF TERRACE)	124 m ²
PH2 LANDSCAPE COURT YARD	1,887 m ²	1,887 m ²
TOTAL	5,112 m²	7,623 m²

IF IT IS THE RESPONSIBILITY OF THE APPROPRIATE CONTRACTOR TO CHECK AND VERIFY ALL DIMENSIONS ON SITE AND REPORT ALL ERRORS AND/OR OMISSIONS TO THE ARCHITECT.

ALL CONTRACTORS MUST COMPLY WITH ALL PERTINENT CODES AND BY-LAWS.

DO NOT SCALE DRAWINGS.

THIS DRAWING MAY NOT BE USED FOR CONSTRUCTION UNLESS SIGNED.

COPYRIGHT RESERVED.

Hobin Architecture Incorporated
 63 Pankin Street
 Ottawa, Ontario
 Canada K1S 3K7
 T: 613-238-7000
 F: 613-235-2025
 E: info@hobin.com
 hobinarc.com

HOBIN ARCHITECTURE

770 BROOKFIELD PHASE 2

DATE: 08/10/21
SCALE: As Indicated
PROJECT: 2204
DRAWING NO.: A1.00