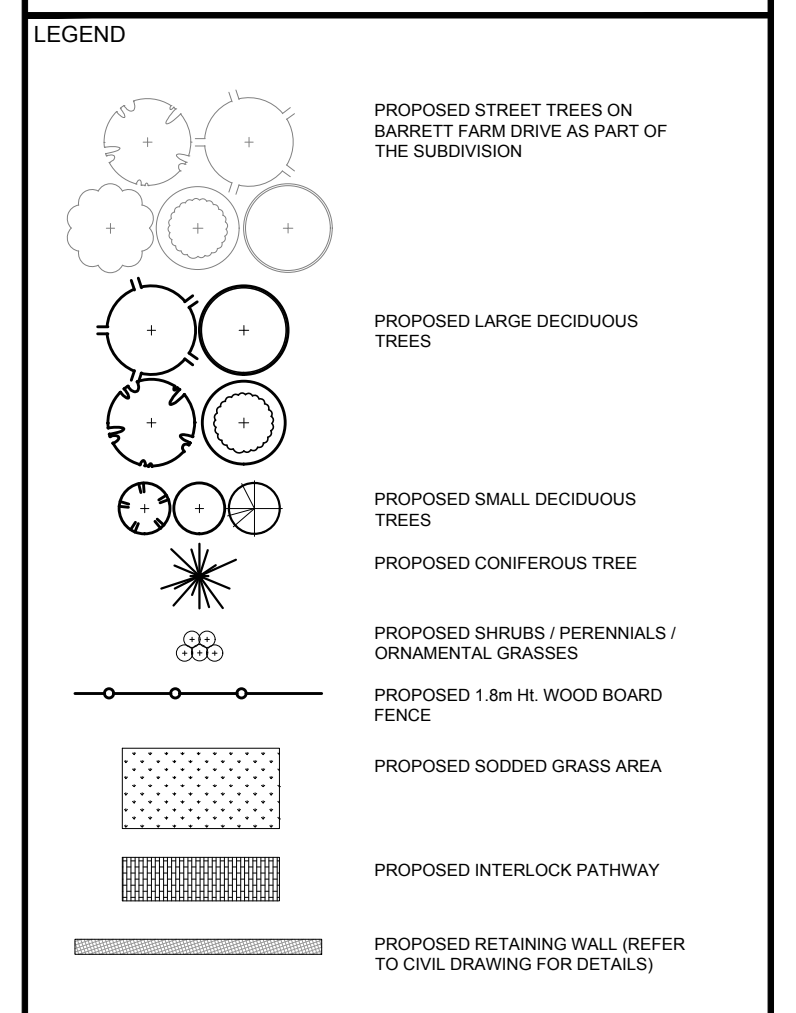


PROPOSED PLANT LIST						
KEY	QTY	BOTANICAL NAME	COMMON NAME	SIZE	CONDITION	REMARKS
TREES						
AM	9	Acer ginnala	Amur Maple	60mm cal.	B&B	Native not hybrid
BW	2	Tilia americana	Basswood	60mm cal.	B&B	
IS	9	Syringa reticulata 'Ivory Silk'	Ivory Silk Lilac	1200mm ht.	Potted	
JV	2	Juniperus virginiana	Eastern Red Cedar	1800mm ht.	B&B	
MJ	2	Juniperus scopulorum	Rocky Mountain Juniper	60mm cal.	B&B	
RM	2	Acer rubrum	Red Maple	60mm cal.	B&B	
RO	2	Quercus rubra	Red Oak	60mm cal.	B&B	
SB	9	Amelanchier laevis	Serviceberry	60mm cal.	B&B	
SM	2	Acer saccharum	Sugar Maple	60mm cal.	B&B	
SS	3	Picea omorika	Serbian Spruce	1800mm ht.	B&B	
SHRUBS						
DW	33	Cornus sericea	Red Osier Dogwood	800mm ht.	Potted	1200mm o.c.
NA	10	Viburnum lentago	Nannyberry	600mm ht.	Potted	1500 mm o.c.
RR	17	Rosa rugosa	Rugosa Rose	800mm ht.	Potted	800 mm o.c.
PERENNIALS AND ORNAMENTAL GRASSES						
KF	100	Calamagrostis 'Karl Foerster'	Karl Foerster Grass	250mm pot	Potted	800 mm o.c.

CLIENT
BARRETT
CO-TENANCY

CONSULTANTS
CIVIL ENGINEERS: **IBI GROUP**
333 Preston Street
Tower 1, Suite 400
Ottawa, Ontario
Canada K1S 5N4
Tel: (613)225-1311
Fax: (613)225-9888

LOCATION PLAN
BLOCK 178



No.	Issue	Date	Author	Checked
5	REVISED AS PER CITY COMMENTS	04/25/2023	LC	JL
4	REVISED AS PER CITY COMMENTS	03/01/2023	LC	JL
3	REVISED AS PER CITY COMMENTS	12/02/2022	LC	JL
2	ISSUED FOR DISCUSSION AND REVIEW	07/19/2022	ML	JL
1	ISSUED FOR COORDINATION	06/15/2022	LC	JL
		Date: MM/DD/YYYY	DR	CK

JAMES B. LENNOX & ASSOCIATES INC.
LANDSCAPE ARCHITECTS
3332 CARLING AVE. OTTAWA, ONTARIO K2H 5A8
Tel: (613) 722-5168 Fax: (866) 343-3942

PROJECT
BARRETT BLOCK 178

DRAWING
LANDSCAPE PLAN

STAMP
ASSOCIATION OF LANDSCAPE ARCHITECTS OF ONTARIO
MEMBER
JAMES B. LENNOX

SCALE
AS SHOWN

START DATE
JUNE, 2022

PROJECT NO.

PROJECT NORTH

DRAWING NO.
L.1

PILOT SIZE ARCH-D

1 LANDSCAPE PLAN
SCALE 1:300

- TREE LEGEND
- Amelanchier laevis Serviceberry
 - Acer ginnala Amur Maple
 - Acer rubrum Red Maple
 - Acer saccharum Sugar Maple
 - Quercus rubra Red Oak
 - Tilia americana Basswood
 - Syringa reticulata 'Ivory Silk' Ivory Silk Lilac

- GENERAL NOTES:
- IT IS THE RESPONSIBILITY OF THE APPROPRIATE CONTRACTOR OR OFFICIAL TO REPORT ANY ERRORS, OMISSIONS OR DISCREPANCIES ON THIS PLAN WITH ACTUAL SITE CONDITIONS TO THE LANDSCAPE ARCHITECT BEFORE PROCEEDING WITH CONSTRUCTION.
 - THE CONTRACTOR IS TO NOTIFY ALL UTILITY COMPANIES AND AUTHORITIES PRIOR TO ANY EXCAVATION AND ASCERTAIN LOCATIONS OF UNDERGROUND SERVICES.
 - THE CONTRACTOR IS TO REINSTATE ALL AREAS AND ITEMS DAMAGED AS A RESULT OF CONSTRUCTION ACTIVITY.
 - THE CONTRACTOR IS TO COMPLY WITH ALL PERTINENT CODES AND BY-LAWS.
 - THE CONTRACTOR IS TO MAINTAIN A POSITIVE SURFACE RUN-OFF THROUGHOUT THE ENTIRE CONSTRUCTION PERIOD.
 - THE LANDSCAPE ARCHITECT IS NOT RESPONSIBLE FOR SUBSURFACE CONDITIONS.
 - THE CONTRACTOR IS TO IDENTIFY ALL EXISTING TREES TO REMAIN ON SITE WITH THE LANDSCAPE ARCHITECT PRIOR TO CONSTRUCTION.
 - THE CONTRACTOR IS TO STAKE THE PROPOSED LOCATION OF ALL PLANT MATERIAL IN CONJUNCTION WITH THE LANDSCAPE ARCHITECT PRIOR TO EXCAVATION.
 - MINIMUM DISTANCES FOR SELECTED DECIDUOUS TREES ARE AS FOLLOWS:
 - SERVICE LATERAL 1.5M
 - FIRE HYDRANT 2.5M
 - HYDRO TRANSFORMER 3M
 - STREETLIGHT 5M (2.5M FOR SMALL TREES)
 - ALL TREES WITHIN 1M OF UNDERGROUND UTILITY TRENCHES ARE TO BE EXCAVATED BY HAND.
 - REMOVE ALL PROTECTIVE WRAPPING FROM TREE TRUNKS AFTER INSTALLATION.
 - STAKING OF TREES SHALL ONLY BE PERFORMED IF NECESSARY.
 - ENSURE THAT MULCH IS PULLED BACK A MIN. DISTANCE OF 75MM FROM BASE OF TREE TRUNK.

