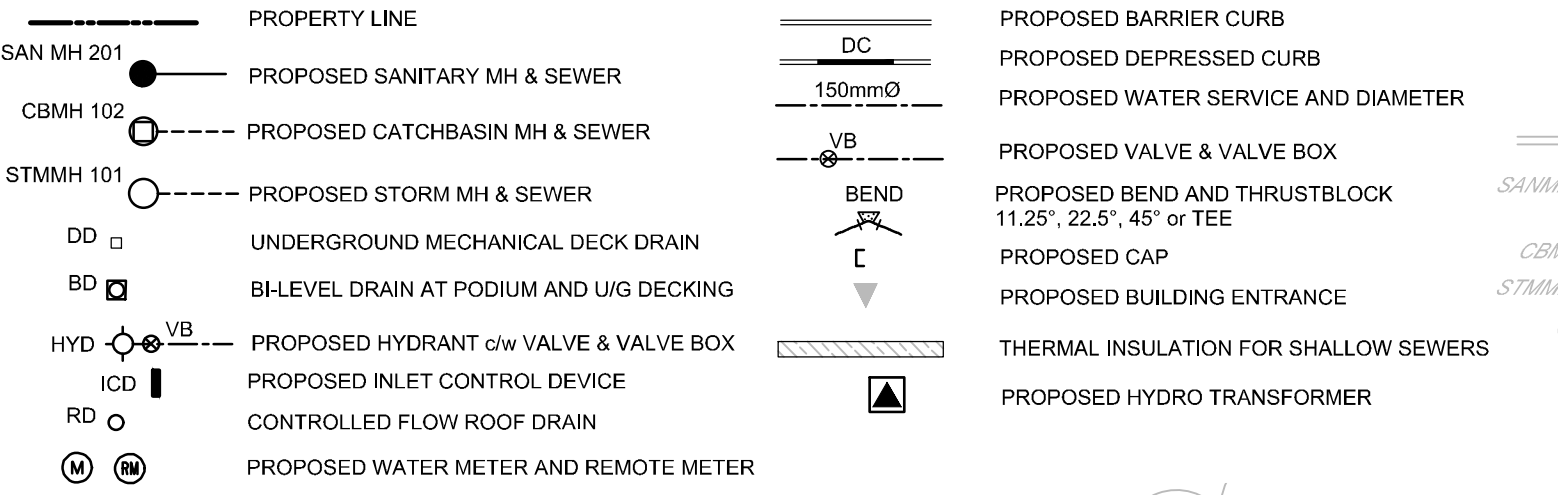


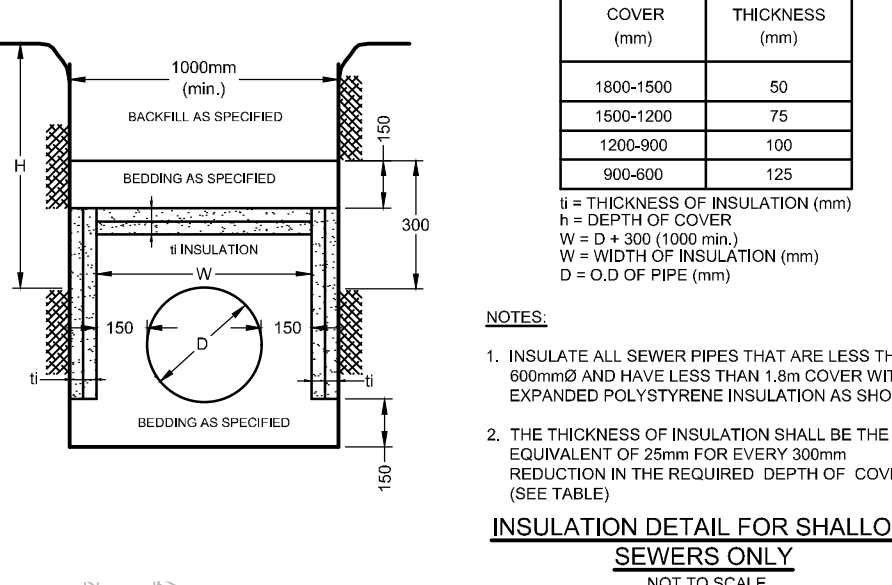
LEGEND



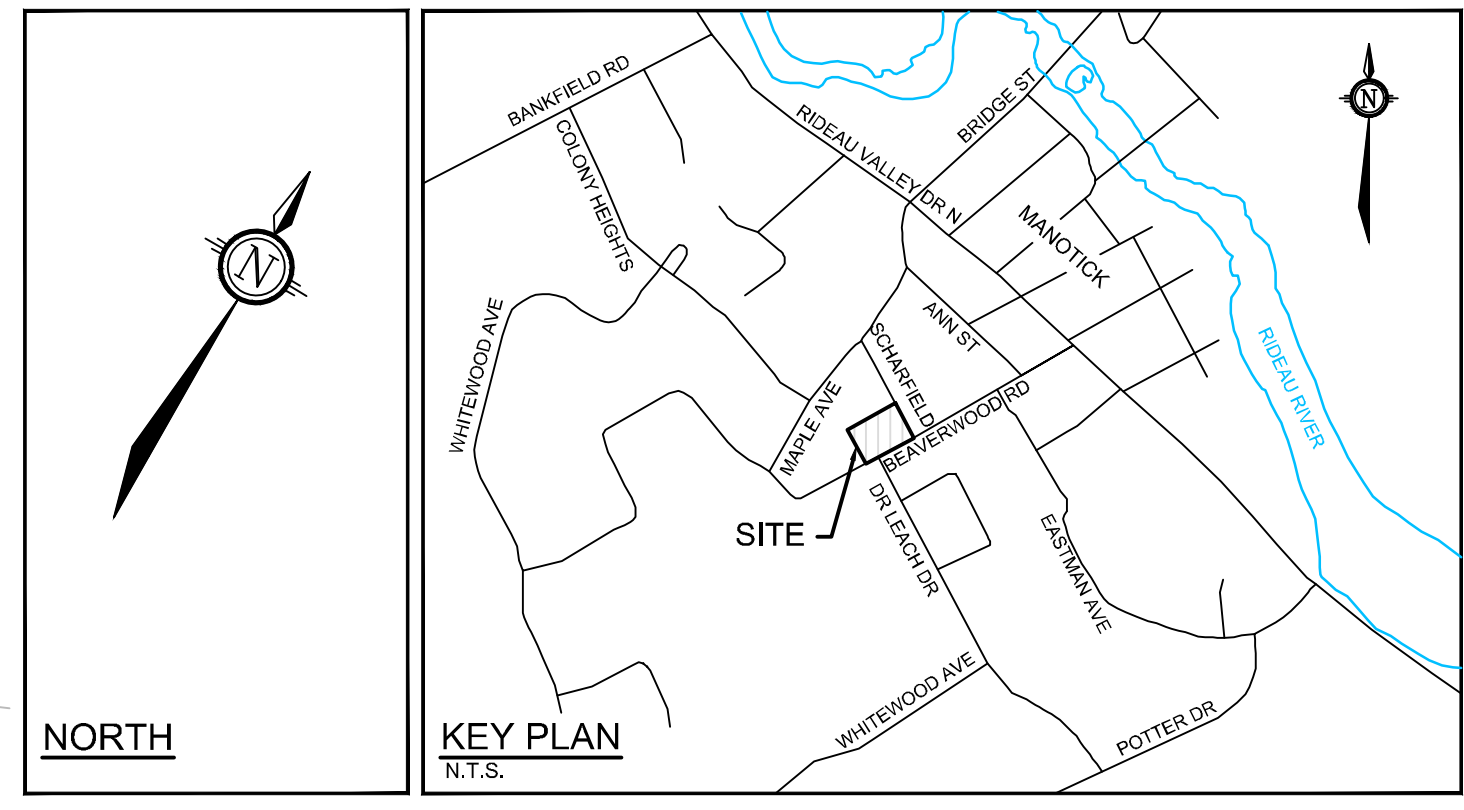
FFE FINISHED FLOOR ELEVATION
T/FND TOP OF FOUNDATION WALL ELEVATION
USF UNDERSIDE OF FOOTING ELEVATION

BENCHMARK NOTES:

- 1. ELEVATIONS SHOWN ARE GEODETIC AND ARE REFERRED TO THE 2011 GEODETIC DATUM. ELEVATIONS ARE RELATED TO VERTICAL CONTROL MONUMENT 019485830 HAVING AN ELEVATION OF 96.03m.



INSULATION DETAIL FOR SHALLOW SEWERS ONLY



GENERAL NOTES:

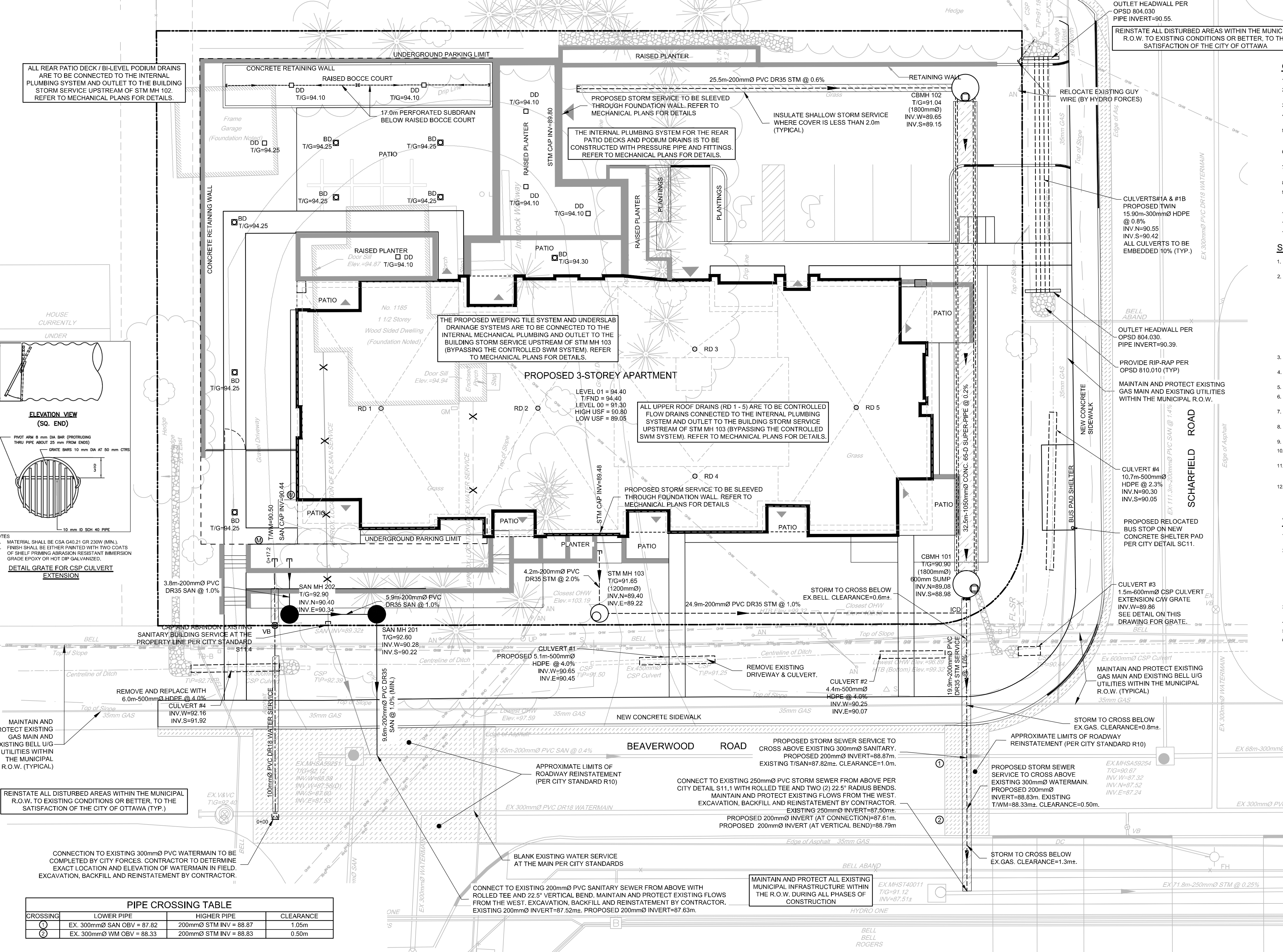
- 1. COORDINATE AND SCHEDULE ALL WORK WITH OTHER TRADES AND CONTRACTORS.
2. DETERMINE THE EXACT LOCATION, SIZE, MATERIAL AND ELEVATION OF ALL EXISTING UTILITIES PRIOR TO COMMENCING CONSTRUCTION.

SEWER NOTES:

- 1. SUPPLY AND CONSTRUCT ALL SEWERS AND APPURTENANCES IN ACCORDANCE WITH THE MOST CURRENT CITY OF OTTAWA STANDARDS AND SPECIFICATIONS - ALL CURRENT VERSIONS AND AS AMENDED.

WATERMAIN NOTES:

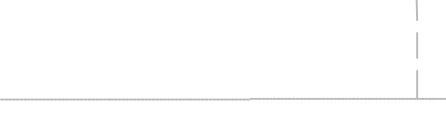
- 1. SUPPLY AND CONSTRUCT ALL WATERMANS AND APPURTENANCES IN ACCORDANCE WITH THE CITY OF OTTAWA STANDARDS AND SPECIFICATIONS - ALL CURRENT VERSIONS AND AS AMENDED.



NOTES:

- 1. MATERIAL SHALL BE CSA G40.21 GR 230W (MIN.) FINISH SHALL BE EITHER PAINTED WITH TWO COATS OF SHELL PRIMER OR ANTI-RUST PRIMER.

DETAIL GRADE FOR CSP CULVERT EXTENSION



INLET CONTROL DEVICE DATA TABLE: AREA A-2. Table with columns for Design Event, Inlet Type, Outlet Structure, Peak Design Flow, Design Head, Water Elevation, Volume, and Available Storage.

PROPOSED ROOF DRAIN TABLE: AREA R-1 (RD 1 TO RD 5). Table with columns for Area ID, Roof Drain No., Roof Drain Model, Opening Setting, 1.5 Year Release Rate, Approx. 5-Yr Ponding Depth, 1.00 Year Release Rate, and Approx. 100-Yr Ponding Depth.

PROPOSED 100mmØ WATER SERVICE TABLE. Table with columns for Station, Surface Elevation, TBM Elevation, and Comments.

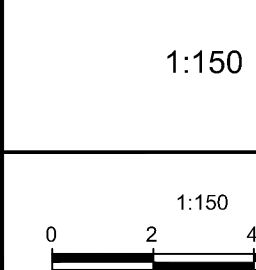
PIPE CROSSING TABLE. Table with columns for Crossing, Lower Pipe, Higher Pipe, and Clearance.

NOTE:

THE POSITION OF ALL POLE LINES, CONDUITS, WATERMANS, SEWERS AND OTHER UNDERGROUND AND OVERGROUND UTILITIES AND STRUCTURES IS NOT NECESSARILY SHOWN ON THE CONTRACT DRAWINGS...

OWNER INFORMATION
NIVO DEVELOPMENTS INC.
255 MICHAEL COWPLAND DRIVE,
OTTAWA, ONTARIO, K2M 0M5

SCALE



FOR REVIEW ONLY

Professional Engineer stamp for F.S. Thauvette, dated May 11, 2023, with design, checked, and approved signatures.

LOCATION

CITY OF OTTAWA
1185 BEAVERWOOD ROAD

DRAWING NAME

GENERAL PLAN OF SERVICES

Table with columns for Project No. (121184), Rev. (REV #4), and Drawing No. (121184-GP).

M:\2021\1185\1185-CAD\DWG\121184-GP.dwg, GP, May 09, 2023, 3:10pm, chrisser

D07-12-22-0114