

**1. DRAWINGS**

- A. THE NOTES ON THIS SHEET APPLY TO ALL WORKS UNDER THIS CONTRACT UNLESS OTHERWISE NOTED ON THE SPECIFIC DETAIL DWGS.
- B. THE STANDARD DRAWINGS OF THE CITY OF OTTAWA, ONTARIO PROVINCIAL STANDARDS AND SPECIFICATIONS (OPSS) AND THE ONTARIO PROVINCIAL STANDARD DRAWINGS (OPSD) CONSTITUTE PART OF THE PLANS OF THIS CONTRACT.
- C. THE STANDARD DRAWINGS INCLUDED WITH THESE PLANS ARE PROVIDED FOR CONVENIENCE ONLY AND ARE NOT TO BE CONSTRUED TO BE A COMPLETE SET FOR THE PURPOSE OF THE CONTRACT. IT IS THE CONTRACTOR'S RESPONSIBILITY TO OBTAIN ALL RELEVANT STANDARD DRAWINGS AND SPECIFICATIONS AS REQUIRED FOR THIS CONTRACT.

**2. MEASUREMENTS**

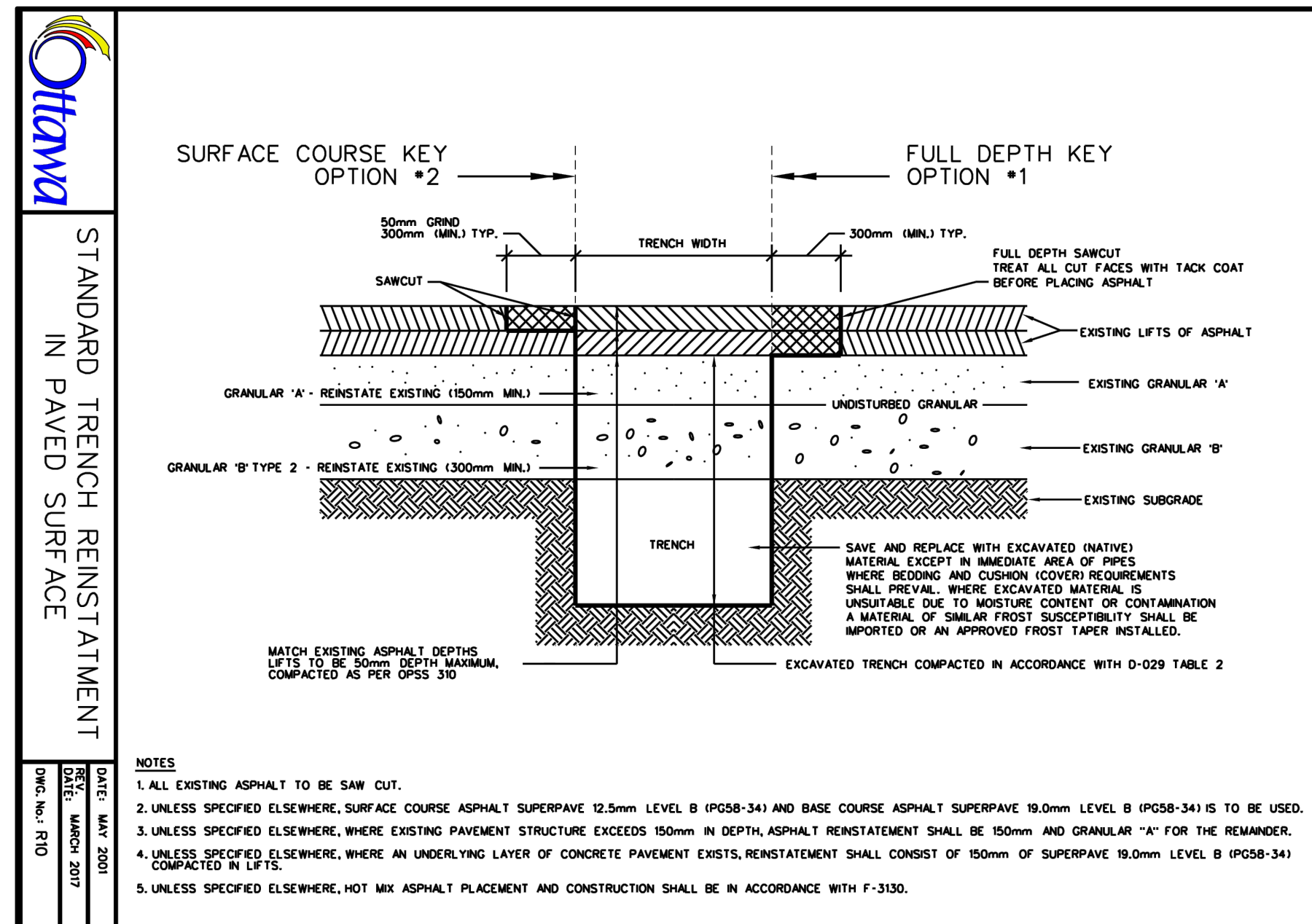
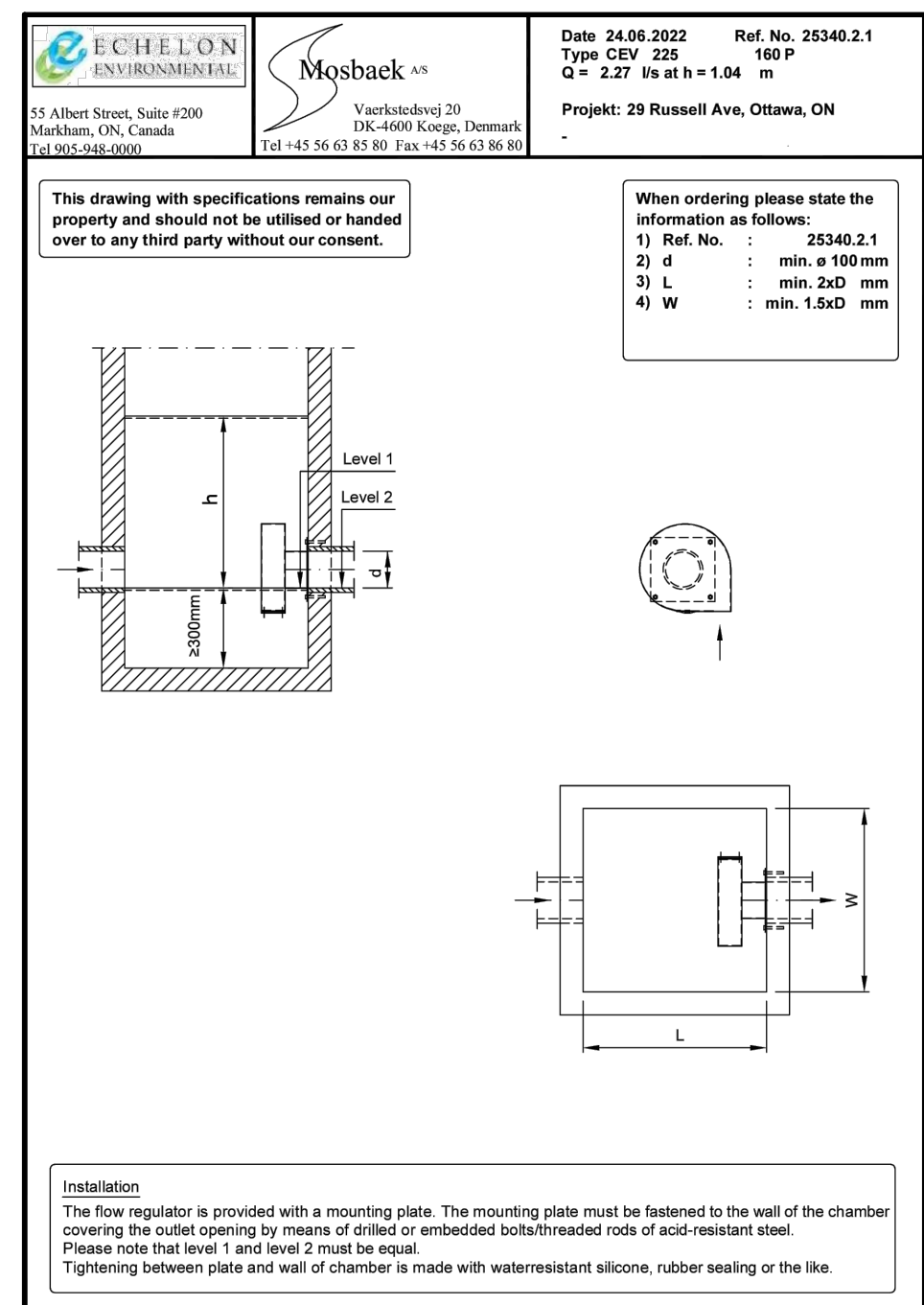
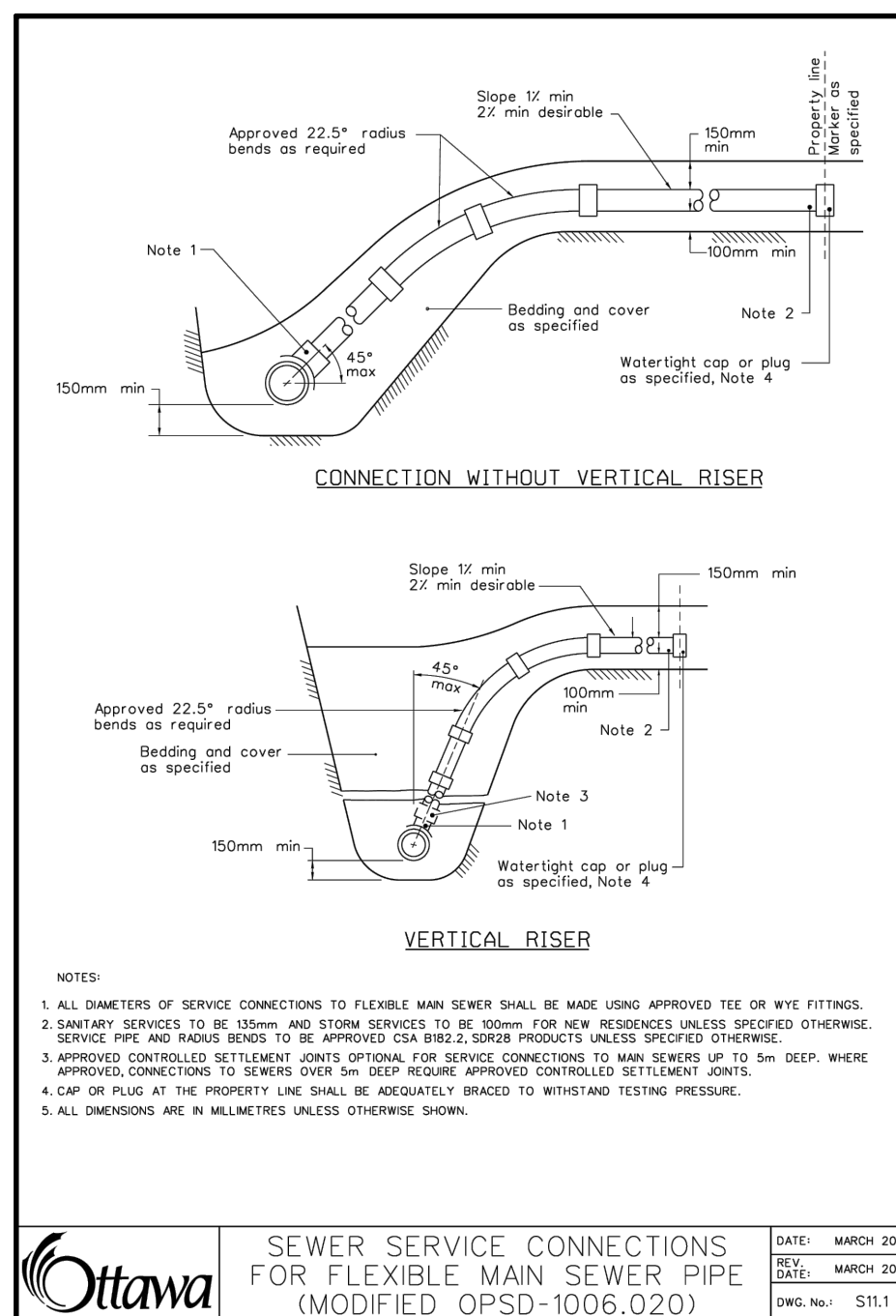
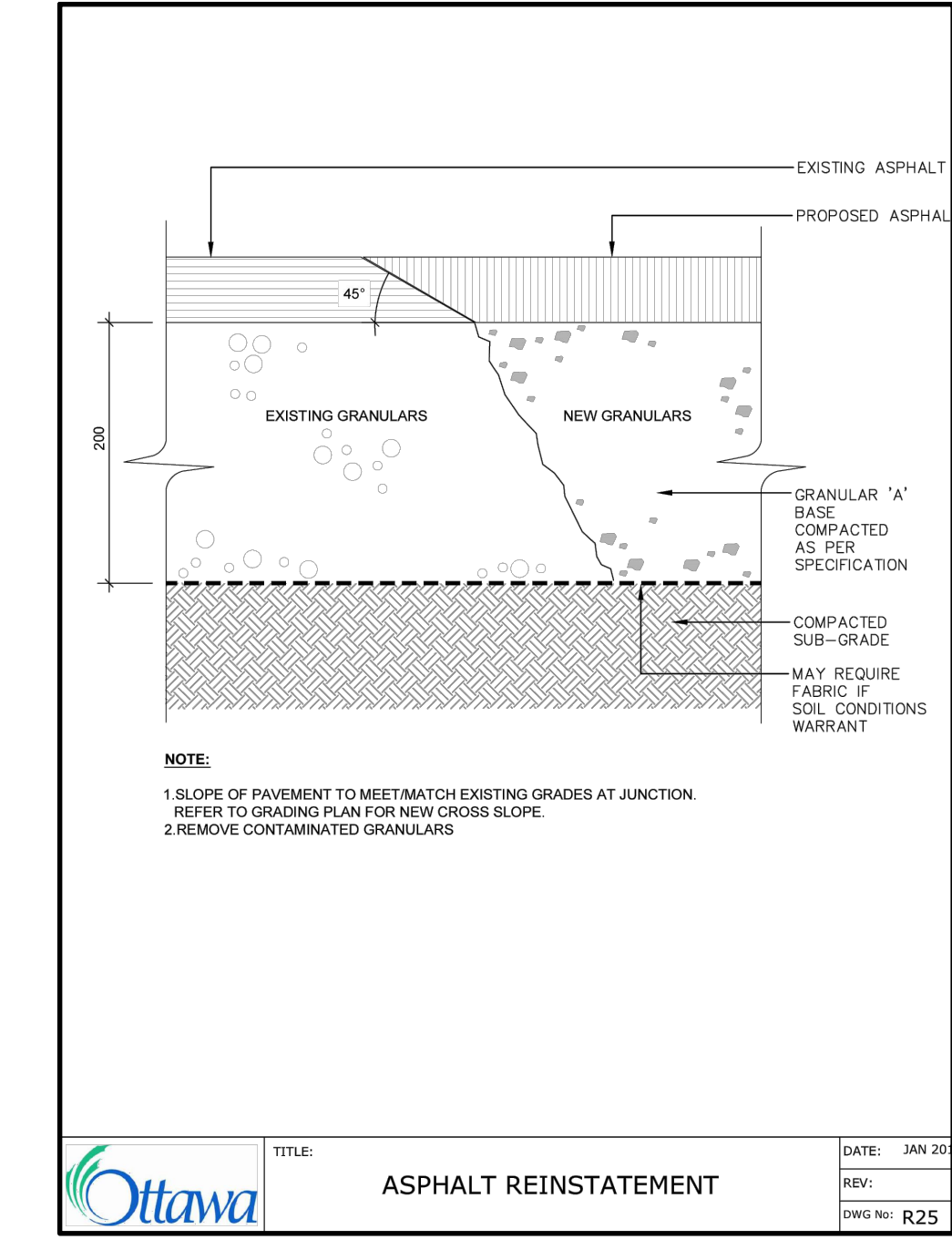
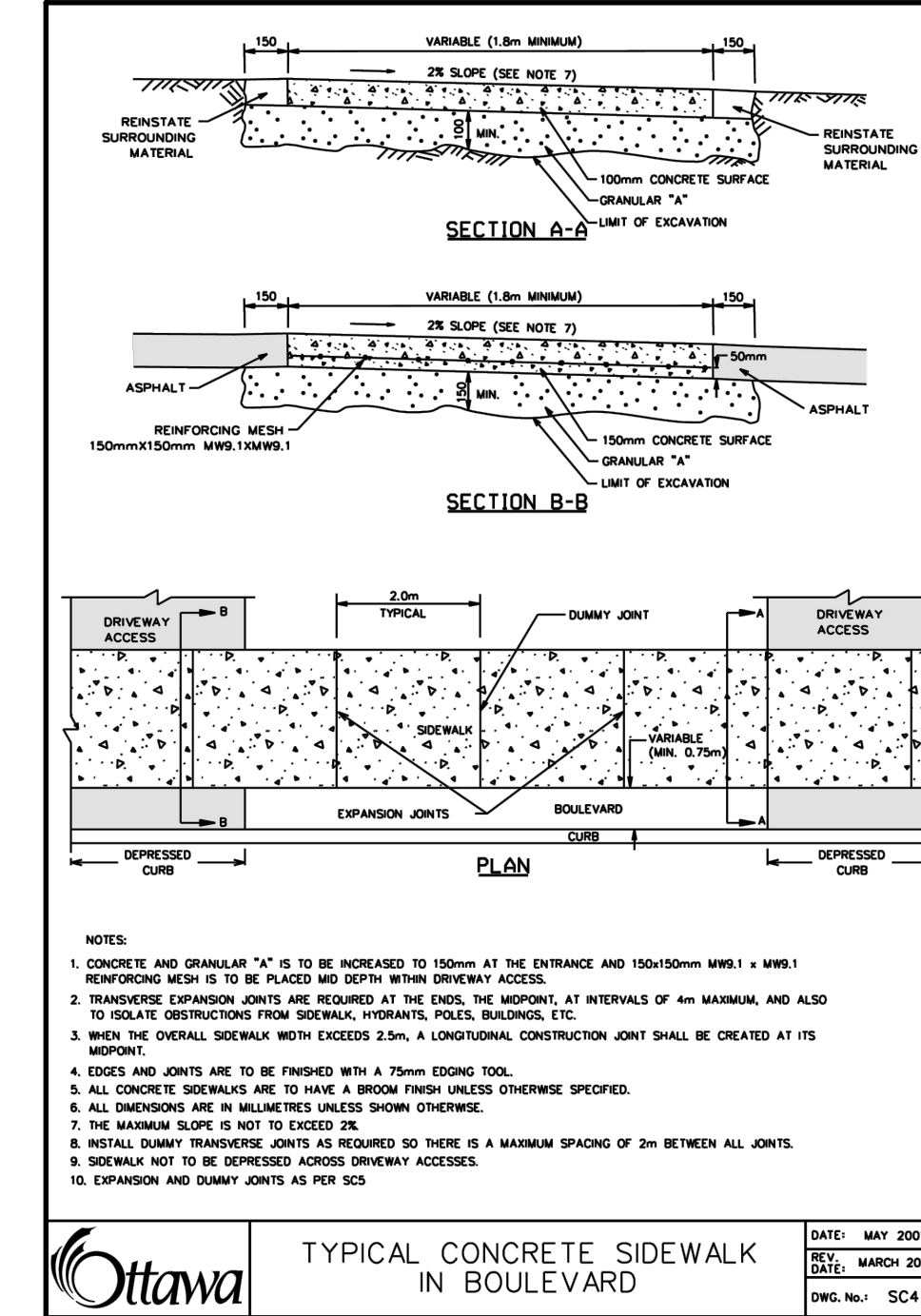
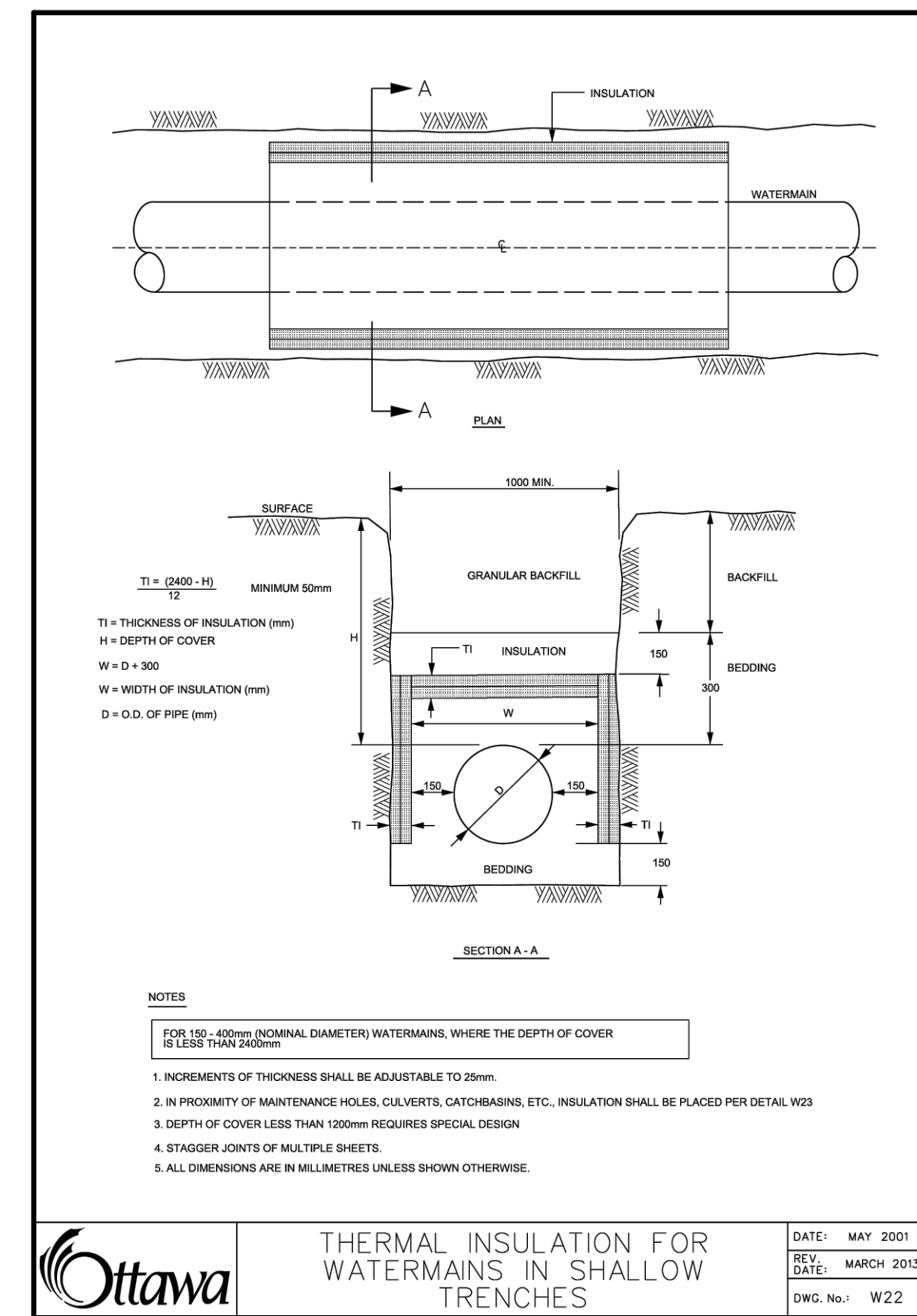
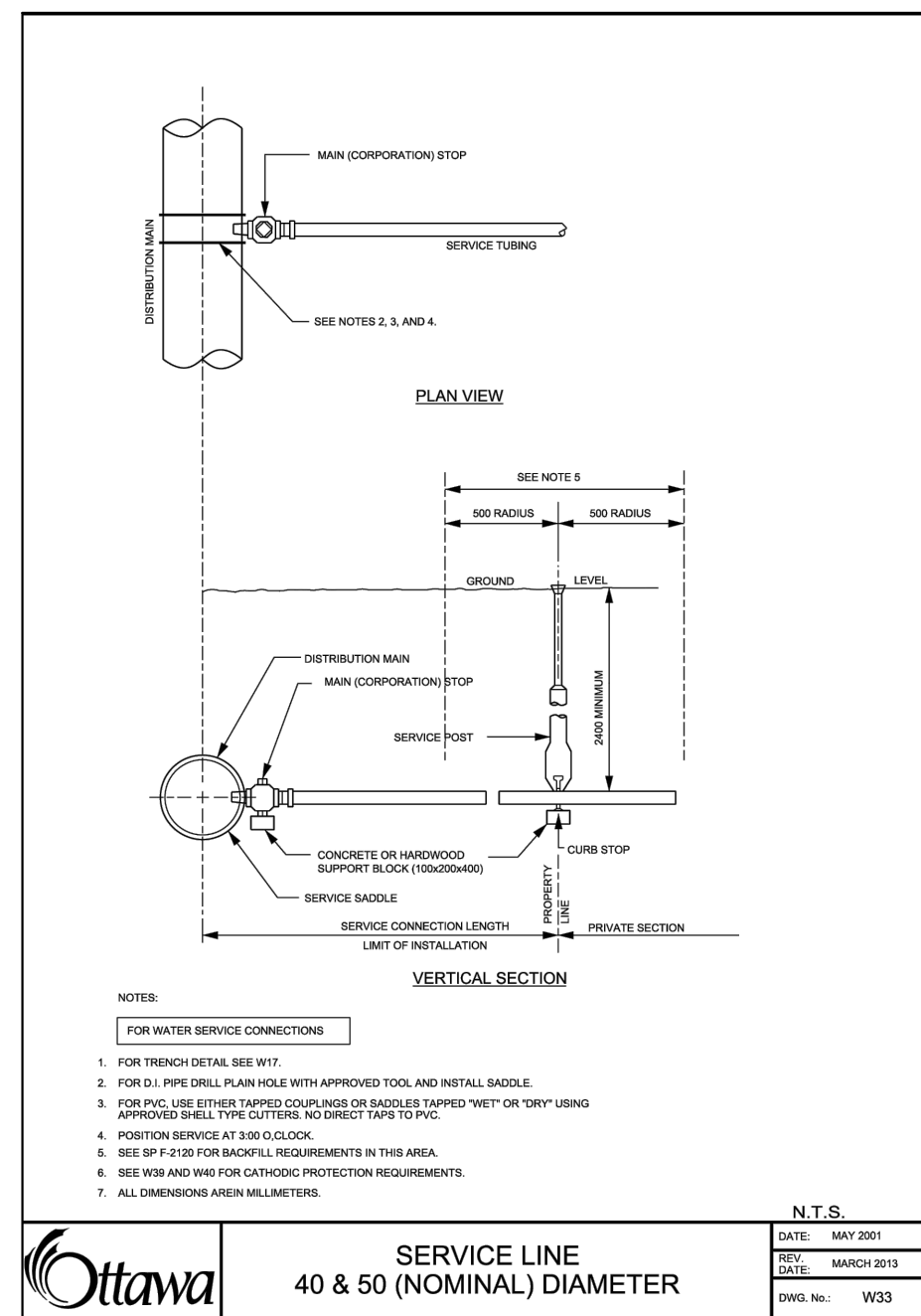
- A. ALL DIMENSIONS ARE IN METRES, EXCEPT PIPE DIAMETERS, WHICH ARE IN MILLIMETRES, UNLESS SPECIFIED OTHERWISE.
- B. ALL DIMENSIONS SHALL BE CHECKED AND VERIFIED IN THE FIELD BY THE CONTRACTOR PRIOR TO ANY CONSTRUCTION, AND ANY DISCREPANCIES SHALL BE REPORTED IMMEDIATELY TO THE ENGINEER.

**3. GENERAL**

- A. EXISTING SERVICES AND UTILITIES SHOWN ON THESE CONTRACT DRAWINGS ARE BASED ON THE BEST INFORMATION AVAILABLE AND THEIR LOCATIONS ARE NOT GUARANTEED. THE CONTRACTOR SHALL INTERPRET THIS INFORMATION AS HE WISHES WITH THE UNDERSTANDING THAT THE OWNER DISCLAIMS ALL RESPONSIBILITY FOR ITS ACCURACY AND/OR SUFFICIENCY. THE CONTRACTOR IS REQUIRED TO NOTIFY THE VARIOUS UTILITY COMPANIES 48 HOURS PRIOR TO THE COMMENCEMENT OF ANY WORK.
- B. NATIVE MATERIAL, SUITABLE FOR BACKFILL, SHALL BE COMPACTED TO 95% STANDARD PROCTOR MAXIMUM DRY DENSITY.
- C. GRANULAR MATERIAL, USED FOR BACKFILL, SHALL BE PLACED IN LAYERS 150mm IN DEPTH MAXIMUM AND COMPACTED TO 100% STANDARD PROCTOR MAXIMUM DRY DENSITY.
- D. ALL DISTURBED AREAS ARE TO BE REINSTATED TO THEIR ORIGINAL CONDITION OR BETTER, AS DETERMINED BY THE ENGINEER. ALL GRASS AND VEGETATION COVERED AREAS SHALL BE RESTORED BY PLACING 200mm OF APPROVED TOPSOIL AND NURSERY SOD UNLESS NOTED OTHERWISE.

**4. STORM SEWERS**

- A. STORM SEWERS SHALL BE CONSTRUCTED WITH BEDDING AS PER OPSD-802.010, (GRAN. 'A' EMBEDMENT MATERIAL) FOR FLEXIBLE PIPES AND OPSD-802.030 OR 802.031 CLASS B (GRAN. 'A' BEDDING MATERIAL) FOR RIGID PIPES UNLESS OTHERWISE APPROVED BY THE CITY OF OTTAWA.
- B. PRECAST MANHOLES SHALL BE 1200mm DIAMETER UNLESS OTHERWISE SPECIFIED, AND SHALL BE IN ACCORDANCE WITH OPSD-701.010, FRAME AND COVER SHALL BE IN ACCORDANCE WITH OPSD-401.010.
- C. SINGLE CATCHBASINS TO BE 600mm SQUARE PRECAST CONCRETE TO OPSD-705.010, FRAME AND GRATE TO OPSD-400.020.
- D. PLACE ALL CATCHBASIN LATERALS AT 2% GRADE UNLESS OTHERWISE NOTED PIPE SIZE MINIMUM 250mm DIAMETER SINGLE, 300mm DIAMETER DOUBLE.
- E. FOR ALL PVC PIPES CONNECTING INTO CONCRETE MH'S AND CB'S USE PVC MH ADAPTER COATED WITH SAND.
- F. ALL CONNECTIONS TO THE STORM MAIN SHALL BE MADE WITH A STOM MANHOLE OR APPROVED FACTORY TEE CONNECTION AS PER OPSD-701.10 OR 708.03.
- G. MANHOLE BENCHING SHALL CONFORM WITH OPSD-701.021.
- H. MAINTENANCE HOLE TOPS (FRAMES) AND CATCH BASIN (FRAMES) ARE TO BE SET TO BASE COURSE ASPHALT GRADE AND THEN ADJUSTED TO FINAL GRADE WHEN THE TOP LIFT OF ASPHALT IS PLACED. ALL ADJUSTMENT WILL BE IN ACCORDANCE WITH OPSD-704.010.
- I. ALL PIPE HANDLING INSTALLATIONS MUST BE IN STRICT COMPLIANCE WITH MANUFACTURERS INSTALLATION GUIDES AND THE O.C.P.A. OR UNIBELL GUIDELINES.
- J. ALL SEWERS WITH LESS THAN 2.0m OF COVER MUST BE INSULATED.
- K. PVC STORM PIPE MATERIAL TO BE PVC CERTIFIED TO C.S.A. STANDARDS 182.2 AND 182.4 LATEST AMENDMENT.
- L. CONCRETE STORM SEWER PIPE TO BE EQUAL TO CSA SPECIFICATION A257.1 (LATEST AMENDMENT)



**BENCHMARK**  
MAGNETIC NAIL IN UTILITY POLE LOCATED AT THE NORTH EAST CORNER OF THE PROPOSED SITE.  
ELEVATION: 70.98

NO.	REVISION NOTE	DATE	BY
02.	AS PER 2ND SUBMISSION COMMENTS	04/12/23	NW
01.	AS PER CITY COMMENTS	01/11/23	JM



SMART LIVING PROPERTIES  
29 RUSSELL AVE,  
CITY OF OTTAWA

NOTES AND DETAILS



DESIGNED BY	NW	HORIZ SCALE	N/A	PROJECT #	22030
DRAWN BY	JM	VERT SCALE	N/A	DRAWING #	ND-1
CHECKED BY	MWD	DATE	MAY 2022	REVISION #	1