



PRE-CONSTRUCTION CCTV INSPECTION REPORT

Report ID:

PC-5226 29 RUSSELL AVENUE

Completion Date:

July 18th, 2022

Sewer Type:

Sanitary

Total Distance:

124.10 M

99.3 m

Integrity. Quality. Community. Since 1948

☎ 613-521-3000 📄 613-526-5909 🌐 taggartconstruction.com

🏠 3187 Albion Road South, Ottawa, Ontario, Canada, K1V 8Y3

Table of contents



	Page
1. Index of Pipes (Custom)	2
2. Structural rating	3
3. O&M rating	4
4. Pipe summary and condition details	5
5. Vision Report© Legend	9

1. Index of Pipes (Custom)

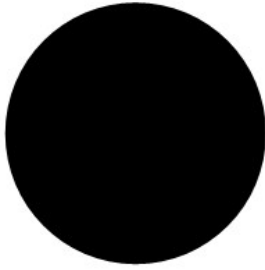


2 items

Start/End	Direction	Road	Inspection Date	Inspected Length	Total Length
MHSA 38938 --> MHSA 38937	D - Downstream	RUSSELL AVENUE	18/07/2022 8:06 AM	99.3	99.3
BUILDING --> MAIN	D - Downstream	RUSSELL AVENUE	05/07/2023 3:27 PM	24.8	24.8
				Total: 124.1	Total: 124.1

2. Structural rating

Structural rating of the pipes



0 - No Defects

Most important structural observations (Grades 3, 4 and 5)

2 items

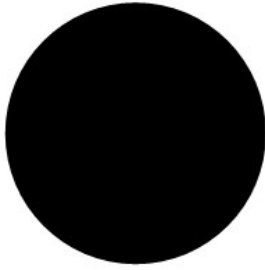
0 - No Defects (2 of 2 items)

Score	Quick	Index	Pipe	Start/End	Direction	Road	Page
0	0000	0	BUILDING MAIN	BUILDING --> MAIN	Direction of flow	RUSSELL AVENUE	5
0	0000	0	MHSA 38938 MHSA 38937	MHSA 38938 --> MHSA 38937	Direction of flow	RUSSELL AVENUE	7

3. O&M rating

Operation and maintenance rating of the pipes

Most important operation & maintenance observations (Grades 3, 4 and 5)



0 - No Defects

2 items

0 - No Defects (2 of 2 items)

Score	Quick	Index	Structural	Pipe	Start/End	Direction	Road	Page
0	0000	0	0	BUILDING MAIN	BUILDING --> MAIN	Direction of flow	RUSSELL AVENUE	5
0	0000	0	0	MHSA 38938 MHSA 38937	MHSA 38938 --> MHSA 38937	Direction of flow	RUSSELL AVENUE	7

4. Pipe summary and condition details

Pipe identification

Pipe: BUILDING MAIN
 Direction of flow: BUILDING --> MAIN

Pipe location

Road:	RUSSELL AVENUE	<u>UPSTREAM</u>	<u>DOWNSTREAM</u>
Crossroad:		Easting (X):	Easting (X):
Drainage Area:		Northing (Y):	Northing (Y):
City:	OTTAWA ON	Elevation (Z):	Elevation (Z):
Location:		GPS Accuracy:	
Owner:	CITY OF OTTAWA	Coordinate System:	
Road segment:		Vertical Datum:	

Pipe characteristics

Sewer Use:	Sanitary	Inspected length:	24.8
Height:	150	Total length:	24.8
Width:		Rim/Inv.:	
Shape:	Circular	Grade/Inv.:	
Material:	Reinforced Concrete Pipe	Rim/Grade:	
Lining:		Rim/Inv.:	
Joint length:		Grade/Inv.:	
Year laid:		Rim/Grade:	
Year renewed:		Sewer category:	

Additional details

Date:	05/07/2023 3:27 PM	Location details:	
Project Number:		Surveyed by:	RYAN LANCE
Customer:	PC-5226-PEARSON ENGINEERING	Certificate #:	P0035571-012022
PO number:		Pre-Cleaning:	Jetting
Work order:		Date cleaned:	
Purpose:		Unit of measurement:	Metric
Weather:	Dry	Media label:	
Flow control:	Lift Station	Sheet #:	

Structural rating

Peak: 0
 Quick rating: 0000
 Score: 0
 Index: 0

O&M rating

Peak: 0
 Quick rating: 0000
 Score: 0
 Index: 0

Overall rating

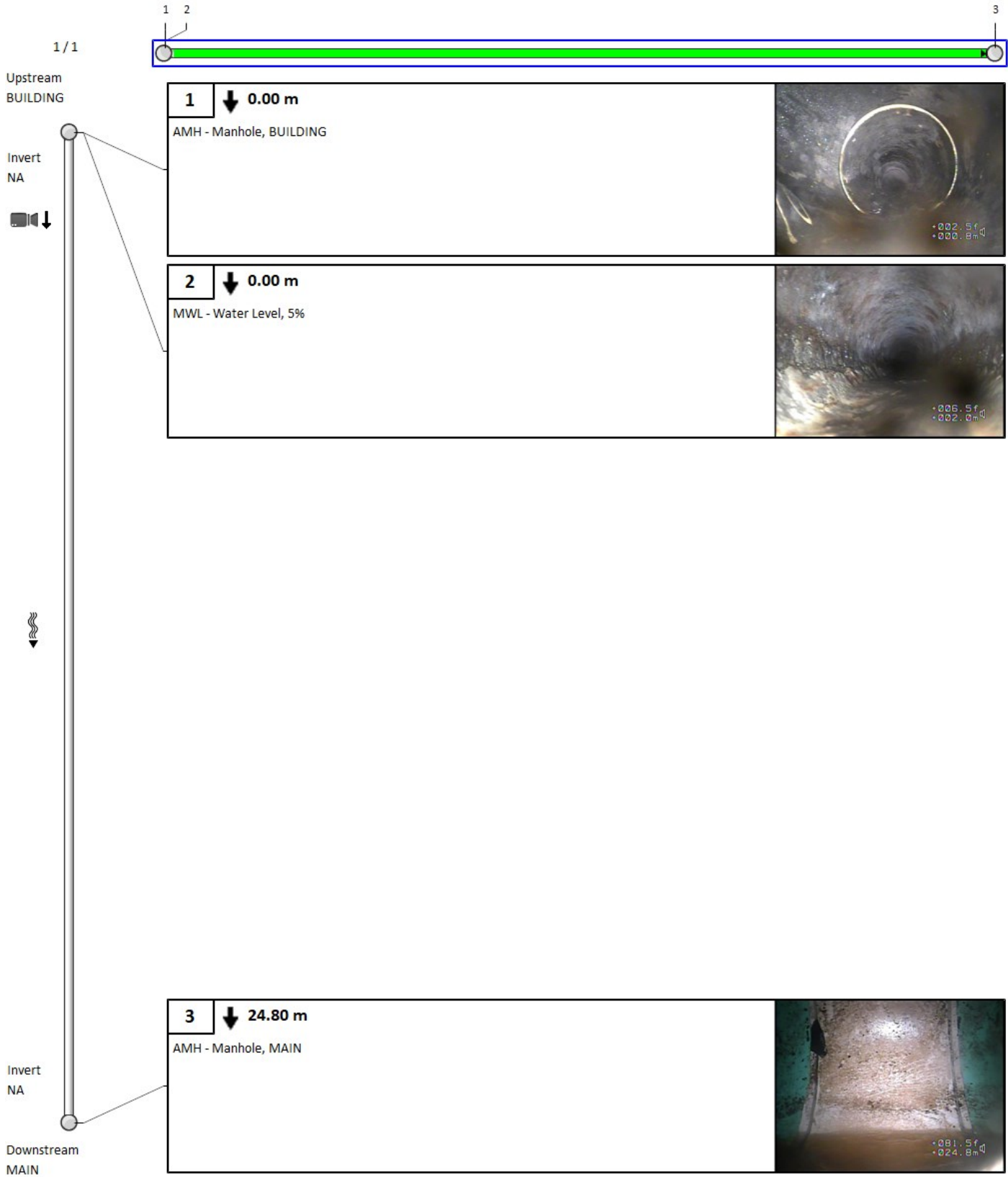
Peak: 0
 Quick rating: 0000
 Score: 0
 Index: 0

Additional information

Other information

Information 1:	Information 6:
Information 2:	Information 7:
Information 3:	Information 8:
Information 4:	Information 9:
Information 5:	Information 10:

4. Pipe summary and condition details



4. Pipe summary and condition details

Pipe identification

Pipe: MHTA 38938 MHTA 38937
 Direction of flow: MHTA 38938 --> MHTA 38937

Pipe location

Road:	RUSSELL AVENUE	<u>UPSTREAM</u>	<u>DOWNSTREAM</u>
Crossroad:		Easting (X):	Easting (X):
Drainage Area:		Northing (Y):	Northing (Y):
City:	OTTAWA ON	Elevation (Z):	Elevation (Z):
Location:		GPS Accuracy:	
Owner:	CITY OF OTTAWA	Coordinate System:	
Road segment:		Vertical Datum:	

Pipe characteristics

Sewer Use:	Sanitary	Inspected length:	99.3
Height:	200	Total length:	99.3
Width:		Rim/Inv.:	
Shape:	Circular	Grade/Inv.:	
Material:	Polyvinyl Chloride	Rim/Grade:	
Lining:		Rim/Inv.:	
Joint length:		Grade/Inv.:	
Year laid:		Rim/Grade:	
Year renewed:		Sewer category:	

Additional details

Date:	18/07/2022 8:06 AM	Location details:	
Project Number:		Surveyed by:	RYAN LANCE
Customer:	PC-5226-PEARSON ENGINEERING	Certificate #:	P0035571-012022
PO number:		Pre-Cleaning:	Jetting
Work order:		Date cleaned:	
Purpose:		Unit of measurement:	Metric
Weather:	Dry	Media label:	
Flow control:	Lift Station	Sheet #:	

Structural rating

Peak: 0
 Quick rating: 0000
 Score: 0
 Index: 0

O&M rating

Peak: 0
 Quick rating: 0000
 Score: 0
 Index: 0

Overall rating

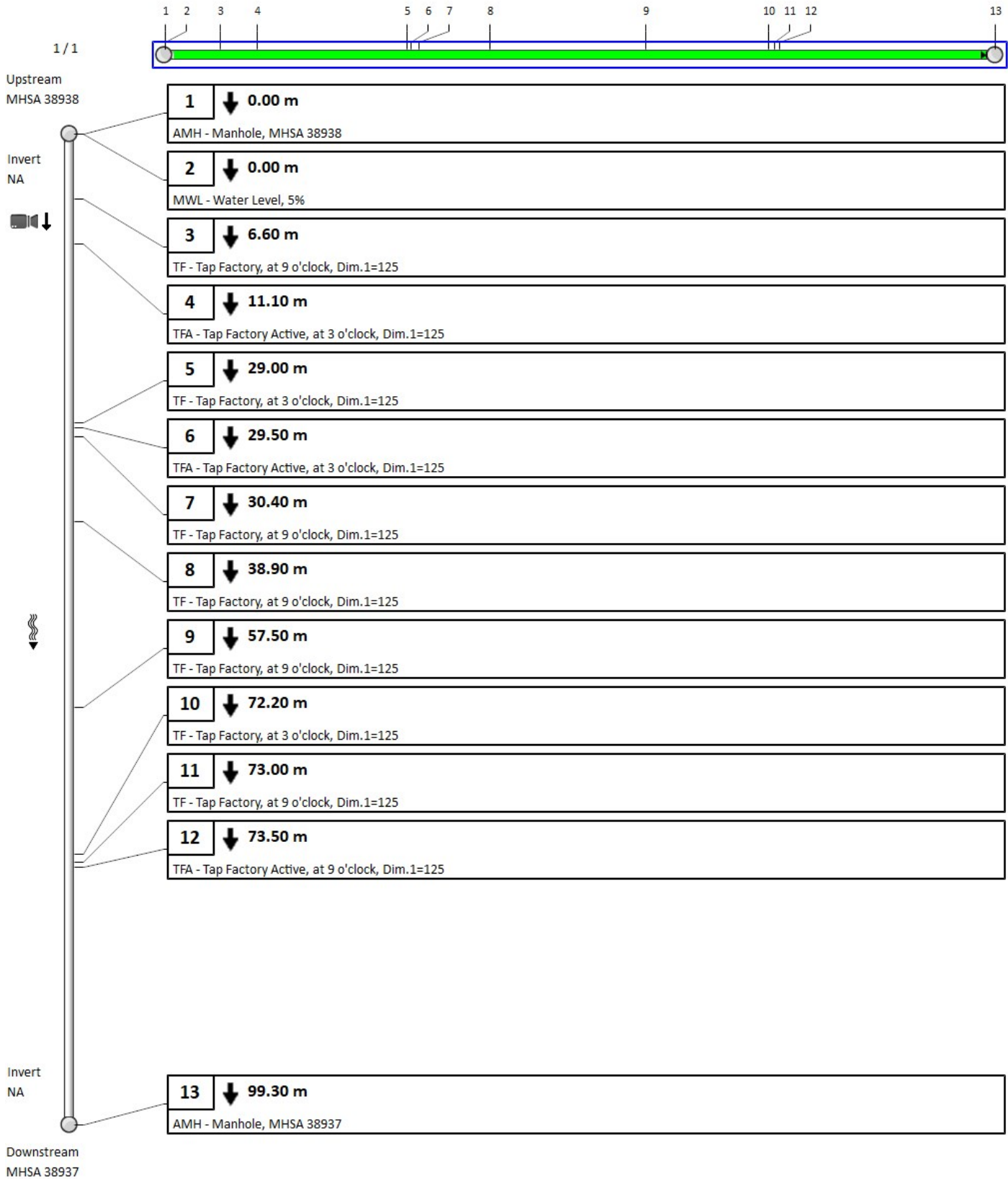
Peak: 0
 Quick rating: 0000
 Score: 0
 Index: 0

Additional information

Other information

Information 1:	Information 6:
Information 2:	Information 7:
Information 3:	Information 8:
Information 4:	Information 9:
Information 5:	Information 10:

4. Pipe summary and condition details



Vision Report © Legend

	The numbers sequentially identify each observation. They allow you to find complete descriptions and related photos throughout the pages. Note that when the pipe contains too many observations, the Vision© report hides the least important observations to optimize the display*.
60	A number with neither a square nor circle indicates a general observation.
	A circled number indicates a structural anomaly. The color of the circle indicates the severity of the anomaly on a scale of 1 to 5, 5 being the most severe: green=1, blue=2, magenta=3, orange=4 and red=5.
	A number in a square indicates an operation and maintenance anomaly. The color of the square indicates the severity of the anomaly on a scale of 1 to 5, 5 being the most severe: green=1, blue=2, magenta=3, orange=4 and red=5.
◀ 3 / 31 ▶	Indicates the current page number of the inspection report.
	The blue square indicates a section of the pipe; this section is covered in detail on the current page of the report.
	The green line indicates the inspected part of the pipe. The remaining white line indicates the uninspected part of the pipe.
	Indicates the hold points on the camera during an inspection.
	Indicates the hold points on the camera during the reverse inspection.
	Indicates that a reverse inspection was carried out, however the camera did not reach the initial inspection hold point. (the hold point of the initial inspection)
	Indicates that a reverse inspection was carried out and that it has joined (has arrived at) the initial inspection hold point.
401-059B 	Identifies the start manhole number. Note that this manhole is not necessarily the upstream manhole of the pipe.
401-631 	Identifies the end manhole number. Note that this manhole is not necessarily the downstream manhole of the pipe.
	A downward arrow indicates that the inspection was carried out in the direction of the current, whereas an upward arrow indicates an inspection against the current. Note that the manhole located on the upper left of the page is always the start manhole, but not necessarily the upstream manhole of the pipe.
	This camera followed by a downward arrow is located on the upper left of the vertical pipe; it indicates that an inspection was done from this manhole.
	When the second camera appears on the bottom left page it means that a reverse inspection was carried out. Information about the reverse inspection is included in the report, thereby combining both inspections.
Invert 3.40	The measurement shown under the word <Invert> indicates the measurements between the frame and the pipe captured during the inspection. This measurement is available at the top left for the start manhole and the bottom left for the end manhole. If the invert was not measured during the inspection, an <NA> mark will be displayed.
	The downward bold arrow to the right of the observation number indicates that this observation was captured during the initial inspection.
	The blank arrow pointing upwards and located to the right of the observation number indicates that this observation was taken during the reverse inspection period, thereby confirming that this report combined both inspections.
18.40 m	Located to the right of the observation number is a number identifying the observation distance in relation to the start of the pipe.
SRV - Armature visible	A full description of the observation code according to the protocol used.

*Any hidden observations are readily accessible from the database as well as in other CTSpec report templates.

** CTSpec inc. reserves the right to modify, eliminate or add to the product features described in this pamphlet without notice.

© 2012 CTSpec inc. All rights reserved.