

**TOPOGRAPHIC PLAN OF SURVEY OF
PART OF BLOCK 1
REGISTERED PLAN 4M-745
CITY OF OTTAWA**
Surveyed by Annis, O'Sullivan, Vollebek Ltd.

Scale 1 : 300
12 Metres

METRIC DISTANCES AND COORDINATES SHOWN ON THIS PLAN ARE IN METRES AND CAN BE CONVERTED TO FEET BY DIVIDING BY 0.3048.

Surveyor's Certificate
1. This surveyed plan is correct and in accordance with the Survey Act, the Regulations and the regulations made under them.
2. The survey was completed on the 25th day of May, 2023.

May 25 2023
Date
T. Harwick
Ontario Land Surveyor

Notes & Legend

Densities

- Survey Monument Planted
- Survey Monument Found
- Standard Iron Bar
- Short Standard Iron Bar
- Iron Bar
- Concrete Pin
- Measured
- (P1)
- (P2)
- (P3)
- Deciduous Tree
- Coniferous Tree
- Congregiated Steel Pipe
- Water Valve
- Sewer
- Sign
- O.P.
- U.P.
- Light Standard
- Air Conditioner
- Bell Terminal Box
- Metal Terminal Box
- Location of Elevations
- Top of Concrete Curb Elevation
- Wood Pole
- Hydro Transformer
- Edge of Asphalt
- Edge of Gravel
- Top of Grate
- Invert
- Street Link Fence
- Metal Fence
- Gate
- Centreline
- Property Line
- Overhead Wires
- Top of Slope
- TOS
- BCS

ASSOCIATION OF ONTARIO
LAND SURVEYORS
PLAN SUBMISSION FORM
V-53747

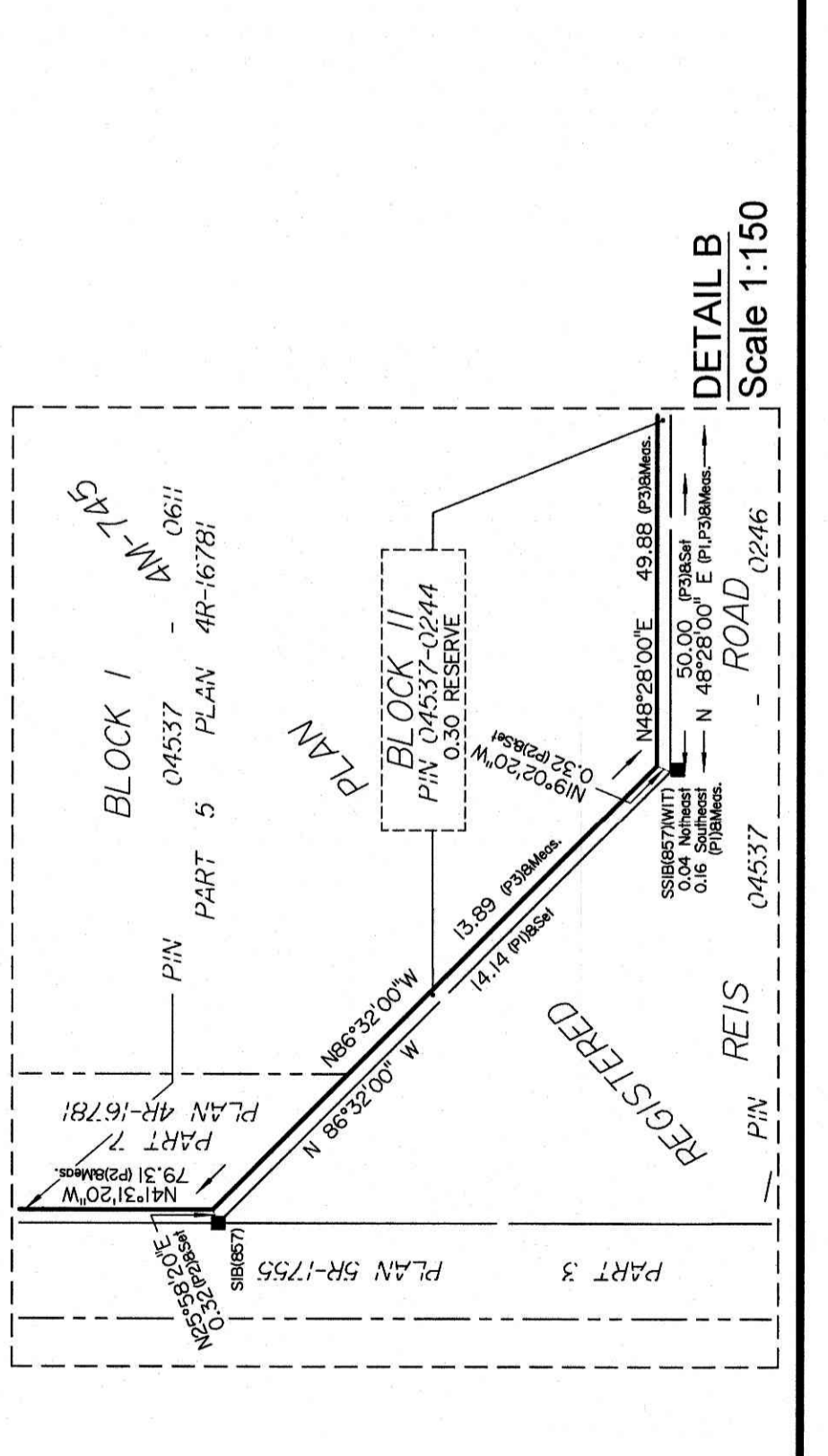
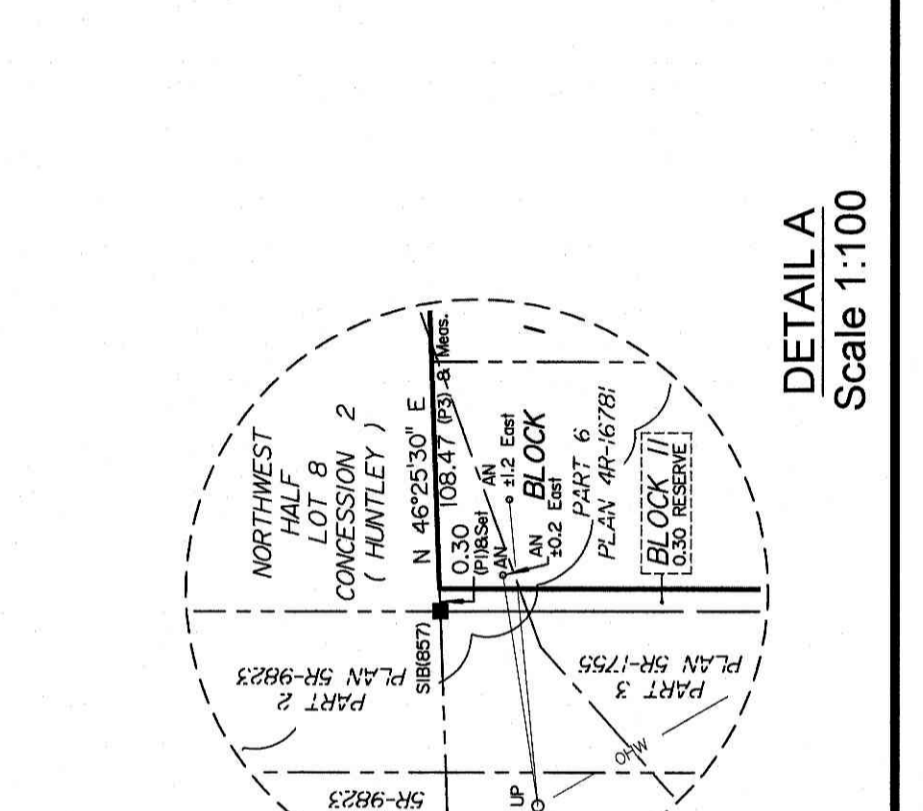
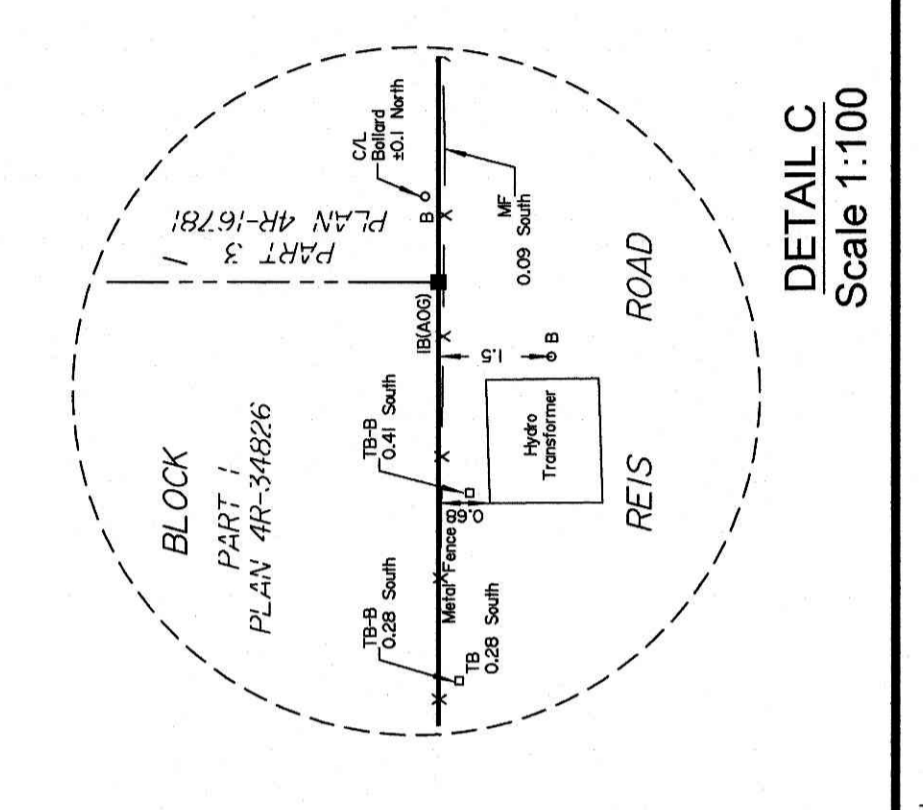
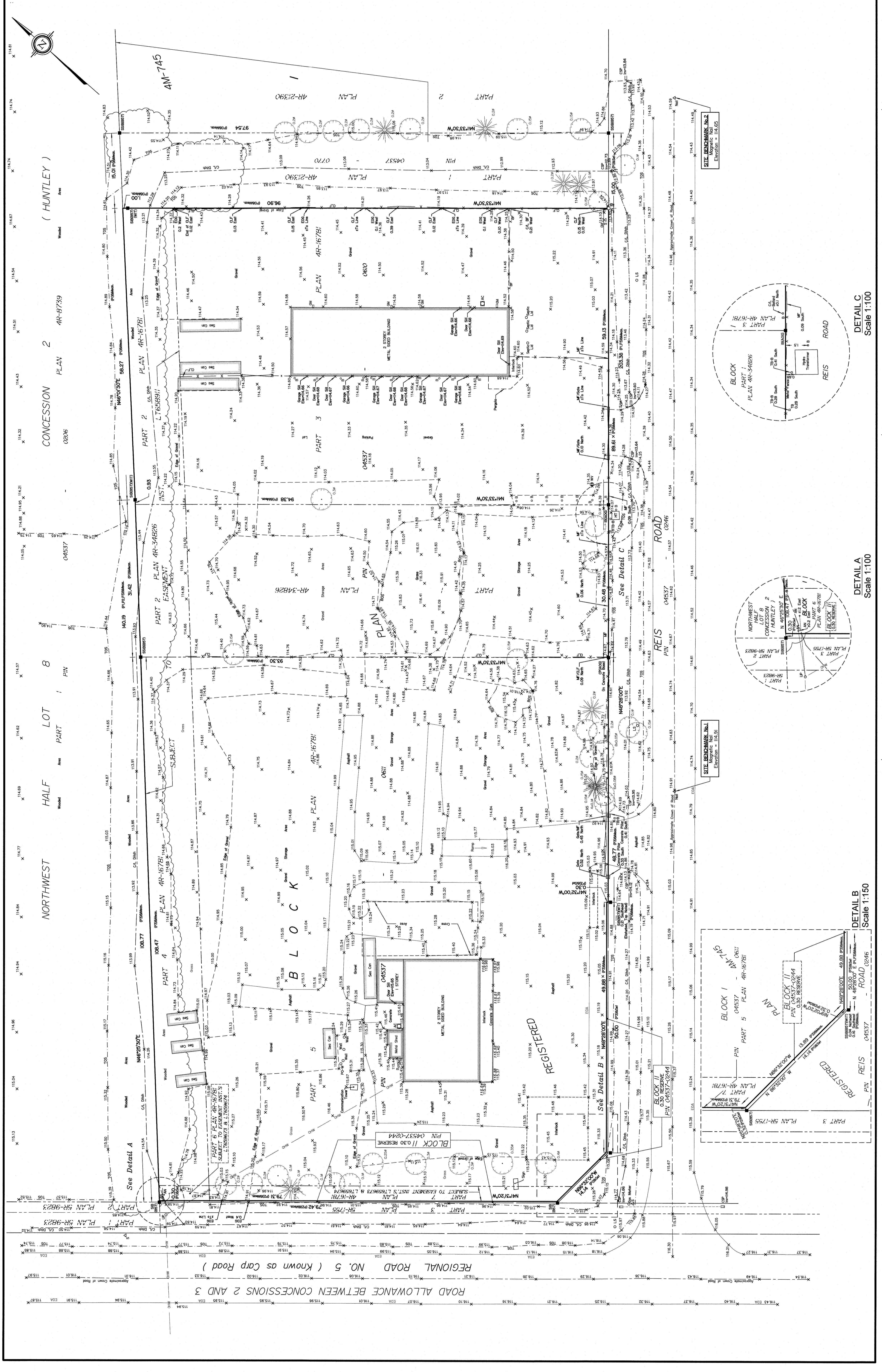
THIS PLAN IS NOT VALID UNLESS
IT IS APPROVED BY THE
CITY ENGINEER OR SURVEYOR
IN ACCORDANCE WITH
REGULATION 1022, SECTION 21(3)

Bearings are given, selected from Chart No. 2168, East Time Network, GCS datum, and are referred to Specific Control Points 0181969037 and 01819791051, MTM Zone 9 (79°30' West Longitude) NAD-83 (original).
For bearing comparisons, a relation of 0°19'10" counter-clockwise was applied to bearings on plan P2.

ELEVATION NOTES
1. Elevations shown are geodetic, derived from a Spike in Utility Pole having a published elevation of 144.28m (AOS Ref. 17008-16) and are referred to the CGVD28 geodetic datum.
2. It is the responsibility of the user of this information to verify that the job benchmark agrees with the information shown on this drawing.

UTILITY NOTES
1. This drawing has been accepted as acknowledging all of the utilities and it will be the responsibility of the user to contact the respective utility authorities for confirmation.
2. Only visible surface utilities were located.
3. A field location of underground plant by the permit utility authority is mandatory before any work involving breaking ground, probing, excavating etc.

© Annis, O'Sullivan, Vollebek Ltd. 2023. THIS PLAN IS PROTECTED BY COPYRIGHT.
ANNIS, O'SULLIVAN, VOLLEBEK LTD.
14 Metway, One KEE 726
Phone: (613) 727-8850 / Fax: (613) 727-1079
E-mail: info@annis-osullivan.com
Web: www.annis-osullivan.com



ROAD ALLOWANCE BETWEEN CONCESSIONS 2 AND 3
REGIONAL ROAD NO. 5 (Known as Carp Road)