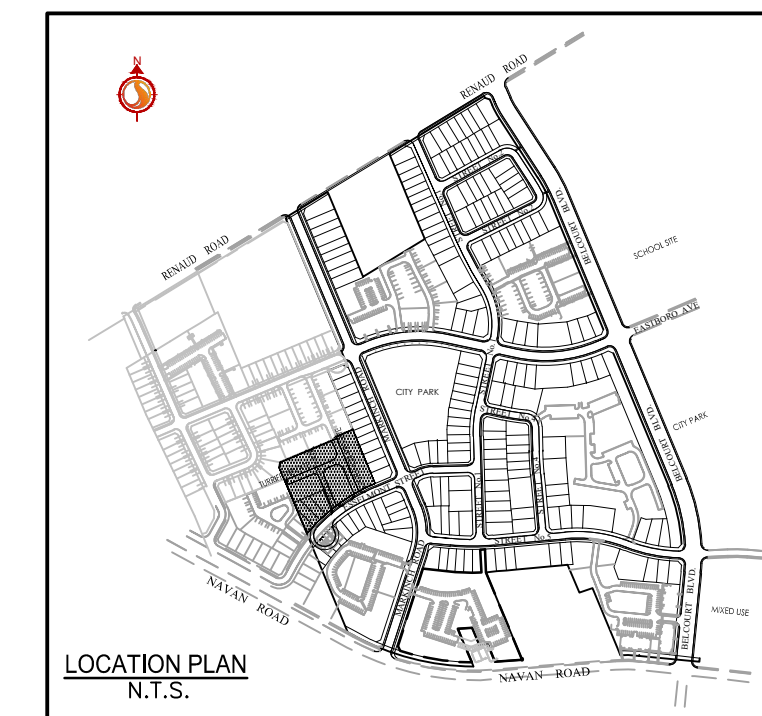
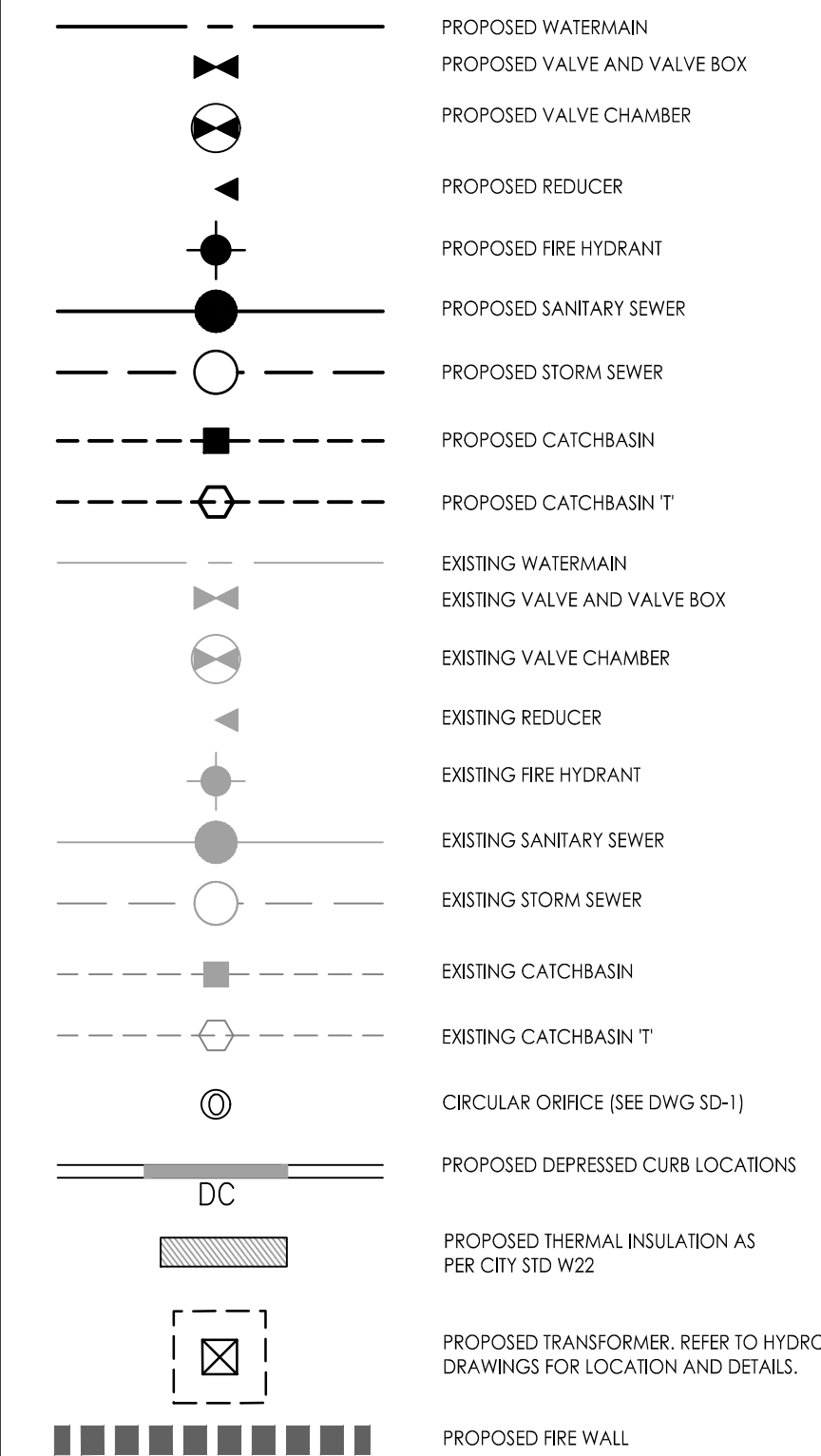


Legend



**250mm WATERMAIN 'A'**

STATION	FINISHED GRADE	TOP OF W/M	ITEM
0+00	86.18	83.78	CONNECTION TO EX. 250mm Ø STUB
0+02	86.15	83.75	TOP OF PIPE
0+03.2	86.21	83.81	250mm Ø VALVE AND BOX
0+08.1	86.25	83.85	11/2" HORIZONTAL BEND
0+04.1	86.20	83.80	250mm x 250mm TEE CONNECTION TO WATERMAIN C
0+06.1	86.18	83.78	22/2" VERTICAL BEND
0+07.2	86.17	83.75	22/2" VERTICAL BEND
0+07.8	86.16	83.74	11/2" HORIZONTAL BEND
0+09.2	86.15	83.73	22/2" VERTICAL BEND
0+00.5	86.14	83.74	TOP OF PIPE
0+01	86.20	83.80	22/2" VERTICAL BEND
0+02.3	86.21	83.77	22/2" VERTICAL BEND
0+03.3	86.22	83.77	22/2" VERTICAL BEND
0+03.5	86.22	83.87	22/2" VERTICAL BEND
0+09.5	86.23	83.83	11/2" HORIZONTAL BEND
0+07.9	86.25	83.85	CONNECTION TO EX. 200mm Ø STUB WITH 250mm TO 200mm REDUCER
0+00.4	86.26	86.07	

**250mm WATERMAIN 'B'**

STATION	FINISHED GRADE	TOP OF W/M	ITEM
0+00	86.27	83.87	CONNECTION TO EX. 250mm Ø STUB
0+02	86.13	83.73	TOP OF WATERMAIN
0+03	86.23	83.83	TOP OF WATERMAIN
0+04.8	86.28	83.88	250mm Ø VALVE AND BOX
0+04.8	86.31	83.91	250mm x 250mm TEE CONNECTION TO WATERMAIN C

**200mm/250mm WATERMAIN 'C'**

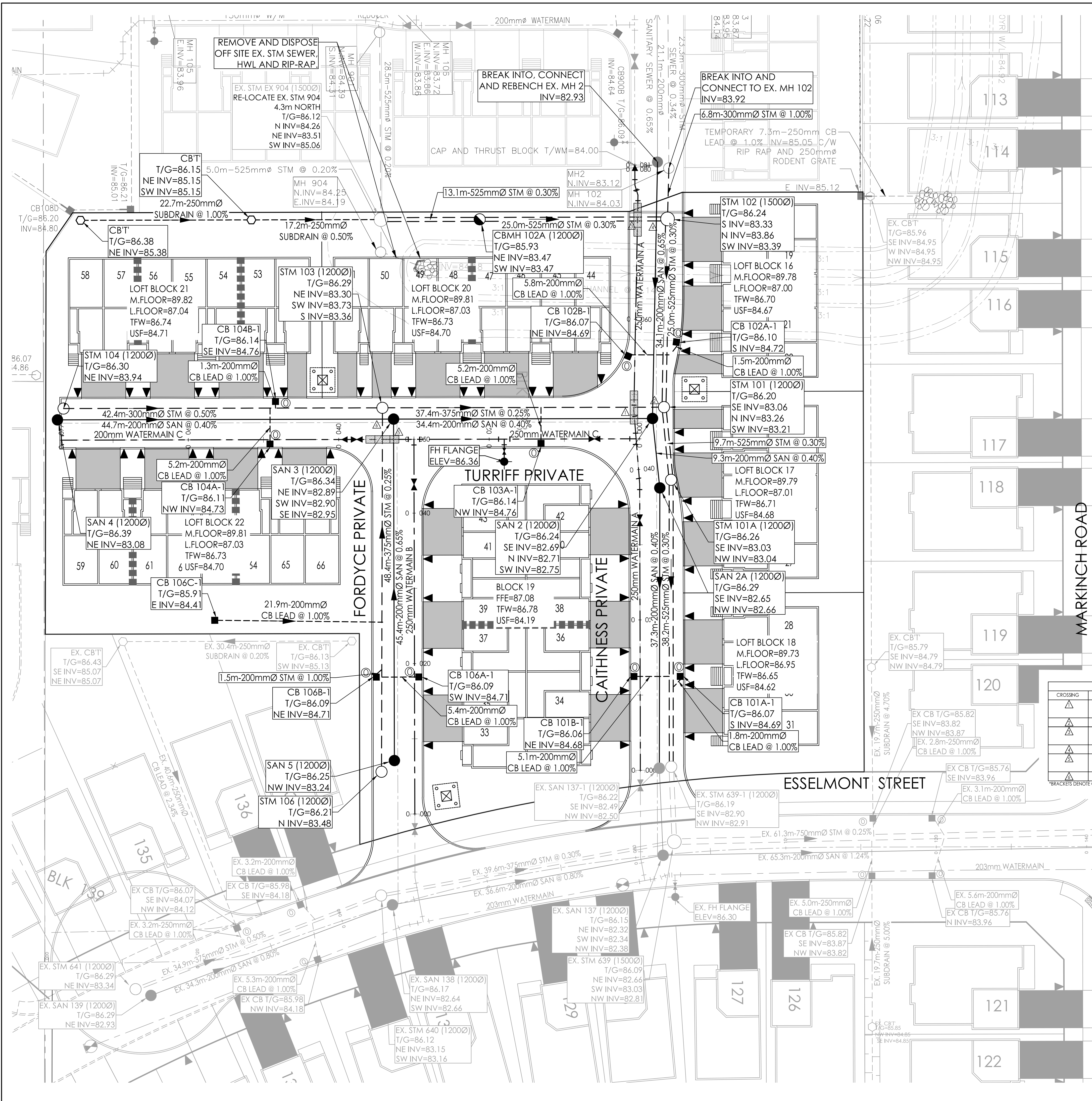
STATION	FINISHED GRADE	TOP OF W/M	ITEM
0+00.5	86.31	83.81	250mm x 200mm TEE CONNECTION TO WATERMAIN A
0+06	86.14	83.74	200mm Ø VALVE AND BOX
0+07.8	86.20	83.80	150mm Ø FIRE HYDRANT TEE
0+02	86.31	83.91	250mm x 250mm TEE CONNECTION TO WATERMAIN B
0+02.2	86.35	83.95	22/2" VERTICAL BEND
0+03.2	86.32	83.92	22/2" VERTICAL BEND
0+03.2	86.29	83.92	22/2" VERTICAL BEND
0+03.4	86.28	83.88	22/2" VERTICAL BEND
0+07.4	86.28	83.88	250mm Ø VALVE AND BOX
0+09.4	86.34	83.84	250mm TO 150mm REDUCER
0+00	86.30	83.80	TOP OF WATERMAIN
0+02.9	86.28	83.88	CAP AND THRUST BLOCK

**SEWER AND WATERMAIN CROSSING TABLE**

CROSSING	STM INV	STM OBV	SAN INV	SAN OBV	WTR TOP	WTR BTM	NOTES
1	83.22	83.60	82.76	82.96	84.35	84.10	DEFLECT WATER OVER STORM AS PER W25.2. INSULATE AS PER W22.
2	83.21	83.59	82.71	82.91	84.77	84.52	DEFLECT WATER OVER STORM AS PER W25.2. INSULATE AS PER W22.
3	83.39 (83.30)	83.92 (84.01)	82.88	83.08	84.49	84.24	DEFLECT WATER OVER STORM AS PER W25.2. INSULATE AS PER W22.
4	83.36	83.74	82.97	83.17	84.49	84.24	DEFLECT WATER OVER STORM AS PER W25.2. INSULATE AS PER W22.
5	83.36	83.74	82.90	83.10			

**SCHEDULE OF INLET CONTROL DEVICES**

CATCHBASIN ID	TRIBUTARY AREA ID	ICD TYPE	SVR HEAD (m)	100% HEAD (m)	SVR RELEASE RATE (L/S)	100% RELEASE RATE (L/S)
CB102A-1	C102A	PEX TEMPEST HF (35mm ORFICE)	1.5	1.6	16.8	17.1
CB108B-1	C108B	PEX TEMPEST HF (35mm ORFICE)	1.5	1.6	16.8	17.1
CB103A-1	C103A	PEX TEMPEST HF (35mm ORFICE)	1.4	1.5	15.7	16.6
CB104A-1	C104A	PEX TEMPEST LNF 80	1.5	1.5	6.1	6.2
CB104B-1	C104B	PEX TEMPEST LNF 80	1.5	1.5	6.1	6.2
CB105A-1	C105A	PEX TEMPEST LNF 80	1.5	1.5	6.0	6.2
CB106B-1	C106B	PEX TEMPEST LNF 80	1.5	1.5	6.0	6.2
CB106C-1	C106C	PEX TEMPEST HF (35mm ORFICE)	0.4	1.8	8.5	18.3
CB101A-1	C101A	PEX TEMPEST HF (35mm ORFICE)	1.1	1.6	16.2	19.1
CB101B-1	C101B	PEX TEMPEST HF (35mm ORFICE)	1.1	1.6	16.2	19.1



**Revision**

NO.	DESCRIPTION	DATE	BY	APP'D.
4	ISSUED FOR REVIEW	21.06.10	WAJ	KJK
3	REVISED SITE PLAN	21.03.12	WAJ	KJK
2	REVISED AS PER HYDRO COMMENTS	20.12.07	WAJ	KJK
1	ISSUED FOR REVIEW	20.04.24	WAJ	KJK

**File Name:** 160401057-BLK C D8.dwg

Rev.	Drawn	Checked	Design	Date
M/S	M/S	M/S	M/S	14.05.07
Dwn.	Chkd.	Dgn.	YY.MM.DD	

Permit Seal

Client/Project  
**ASHCROFT HOMES**  
**EAST URBAN COMMUNITY BLOCK C**  
Ottawa, ON

Title  
**SITE SERVICING PLAN**

Project No.	Scale	
160401101	0 2.5 7.5 12.5m 1:250	
Drawing No.	Sheet	Revision
SSP-1	2 of 7	4

W:\active\160401057\_EUC\_Pphase\_1b\_2p\_and\_2c\_detailed\working\DETAILED DESIGN\Site Plan\Block C\160401057-BLK C D8.dwg  
2021/06/10 10:22 AM by Y. Johnson, Warren