

File Path: \\ubelk\dcs\724\0353\_15-17 Des Oblats Ottawa\24\0353\_15-17 Des Oblats AR\_Building New\_024.rvt

CLIENT  
**FORUM ASSET MANAGEMENT**  
 EAST POOLUM, 2ND FLOOR  
 181 BAY STREET  
 TORONTO, ON, M5J 2T3  
 T. 416-947-0389  
 www.forum.com

ARCHITECTURE  
**lemay**  
 Lemay CO Inc  
 SUITE 601  
 60 ADELAIDE ST E  
 TORONTO, ON M5C 3E4  
 T. 647-254-3185  
 www.lemay.com

MECHANICAL & ELECTRICAL  
**Structural**  
 D+M Structural Engineering  
 110  
 333 Preston Street  
 Ottawa, ON K1S 5N4  
 T. 613-851-8910  
 www.dmsstructural.ca

2nd Floor  
 7405 East Danforth Crescent  
 Mississauga, ON L5N 6P6  
 T. 905-285-9900  
 www.joinsustainability.com

LANDSCAPE  
**WSP**  
 Saint-Jacques Street  
 Montreal, QC, H4C 1H2  
 T. 514-432-5101  
 www.lemay.com

CIVIL  
 WSP  
 300  
 2611 Queensview Drive  
 Ottawa, ON K2B 9K2  
 T. 613-629-2800  
 www.wspgroup.com

SURVEYOR  
**Aanis, O'Sullivan, Vollebæk Ltd.**  
 Suite 500  
 14 Concourse Gate  
 Nepean, ON K2E 7S8  
 T. 613-727-2660  
 www.aoslc.com

NOTES

1. CONTRACTOR TO CHECK AND VERIFY ALL DIMENSIONS PRIOR TO COMMENCING WORK.
2. CONTRACTOR TO COMPLY WITH ALL BUILDING CODES, REGULATIONS AND ORDINANCES OF AUTHORITIES HAVING JURISDICTION.
3. THIS DRAWING IS NOT TO BE USED FOR CONSTRUCTION UNLESS STAMPED ISSUED FOR CONSTRUCTION BY LEMAY ARCHITECTURE AND DESIGN LTD.
4. DO NOT SCALE DRAWING.
5. THIS DRAWING MAY NOT BE COPIED, ALTERED, OR DISTRIBUTED IN WHOLE OR IN PART WITHOUT WRITTEN PERMISSION. COPYRIGHT © LEMAY ARCHITECTURE AND DESIGN LTD.
6. REPORT ANY ERRORS AND OMISSIONS TO THE CONSULTANT IMMEDIATELY BEFORE COMMENCING WORK.
7. DEVIATIONS FROM THE CONTRACT DOCUMENTS WITHOUT WRITTEN APPROVAL FROM CONSULTANT ARE SUBJECT TO CORRECTIONS AT CONTRACTOR EXPENSE.
8. DIMENSIONS ARE IN METRIC (MM) UNLESS NOTED OTHERWISE.

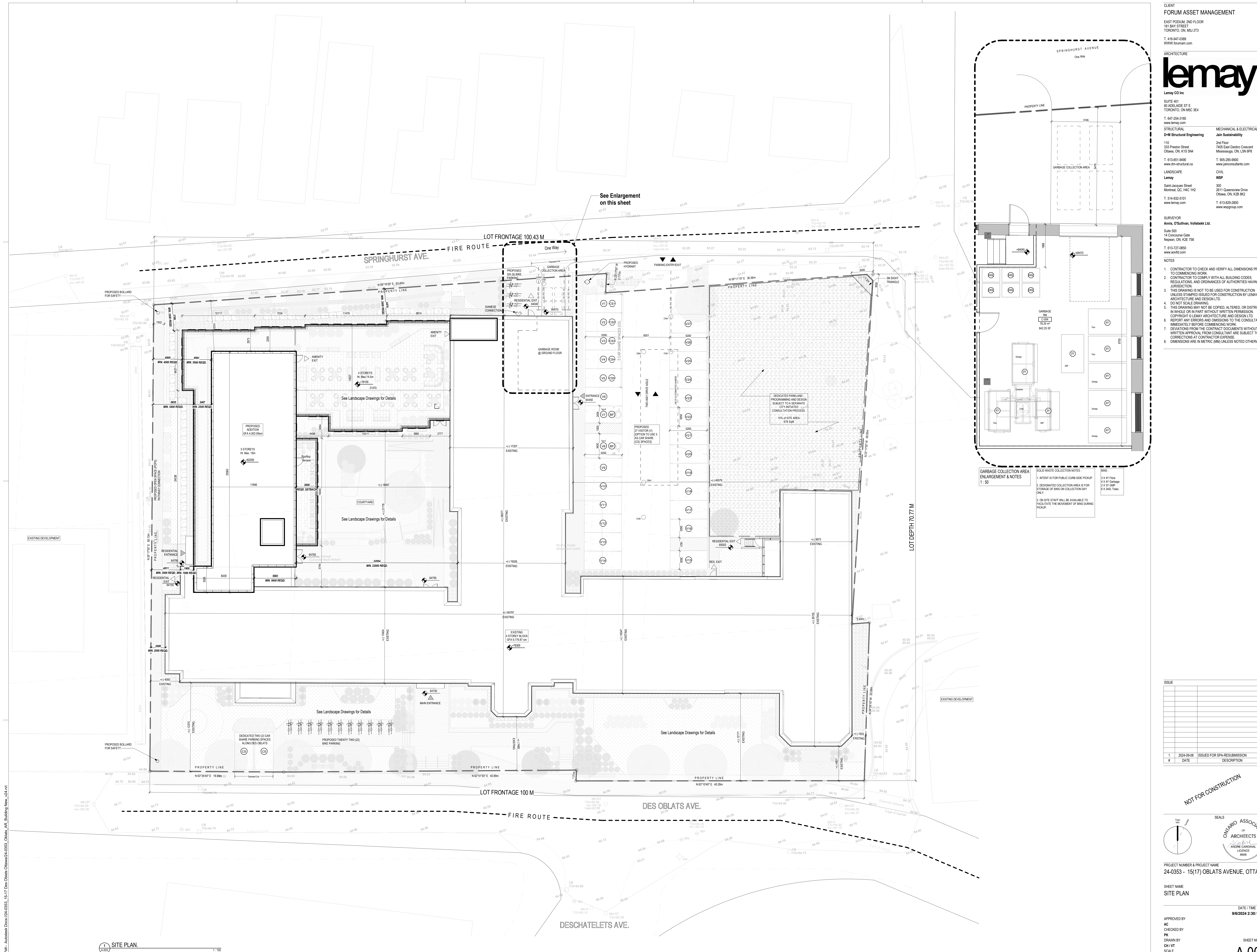
**GARBAGE COLLECTION AREA ENLARGEMENT & NOTES**  
 1: 50

**SOLID WASTE COLLECTION NOTES**

1. INTENDED FOR PUBLIC CURB-SIDE PICKUP.
2. DESIGNATED COLLECTION AREA IS FOR STORAGE OF BINS ON COLLECTION DAY ONLY.
3. ON SITE STAFF WILL BE AVAILABLE TO FACILITATE THE MOVEMENT OF BINS DURING PICKUP.

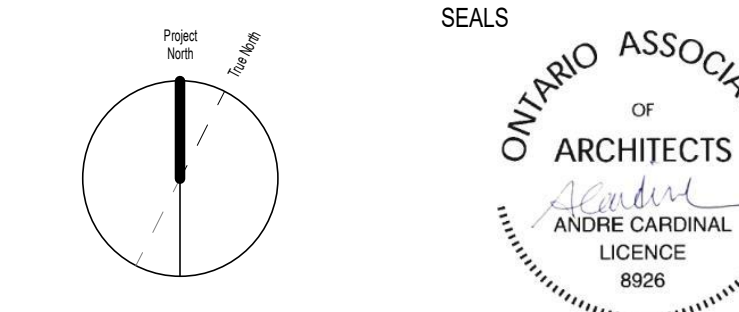
**BINS**

- 3 X 4 FT Fibre
- 3 X 4 FT Garbage
- 2 X 3 FT GMP
- 3 X 240L Trash



ISSUE	DATE	ISSUED FOR SPA RESUBMISSION	DESCRIPTION
1	2024-09-06		
2			
3			
4			
5			
6			
7			
8			

NOT FOR CONSTRUCTION



PROJECT NUMBER & PROJECT NAME  
 24-0353 - 15(17) OBLATS AVENUE, OTTAWA

SITE NAME  
 SITE PLAN

APPROVED BY  
 AC  
 CHECKED BY  
 PK  
 DRAWN BY  
 CH / VT  
 SCALE  
 As Indicated

DATE / TIME STAMP  
 9/6/2024 2:30:17 PM

SHEET NUMBER  
**A.003**