

LOTS 4, 5 & 6,
PART OF LOT 3,
PART OF BLOCK 'A'
REGISTERED PLAN 243
AND
LOTS 91, 165, 166, 167, 168
AND THE REAR PASSAGE
(CLOSED BY BY-LAW 8069, INST.CR215351)
REGISTERED PLAN 110574
AND
PART OF LOT 'H'
CONCESSION D (RIDEAU FRONT)
GEOGRAPHIC TOWNSHIP OF NEPEAN
CITY OF OTTAWA

Prepared by Annis, O'Sullivan, Vollebek Ltd.

Scale 1:200
0 2 4 6 8 10 Metres

Metric
DISTANCES SHOWN ON THIS PLAN ARE IN METRES AND
CAN BE CONVERTED TO FEET BY DIVIDING BY 0.3048

Surveyor's Certificate

- I CERTIFY THAT:
1. This survey and plan are correct and in accordance with the Surveys Act, the Surveyors Act and the regulations made under them.
2. The survey was completed on the 28th day of June, 2021.

Date: June 28, 2021
T. Hartwick
Ontario Land Surveyor

Notes & Legend

- Denotes:
Survey Monument Planted
Survey Monument Found
Standard Iron Bar
Short Standard Iron Bar
Iron Bar
Cut Cross
Concrete Pin
Witness
Measured
Annis, O'Sullivan, Vollebek Ltd.
Registered Plan 110574
Registered Plan 243
Plan 4R-27624
(1992) Plan dated February 29, 2012
Deciduous Tree
Coniferous Tree
Shrubs
Fire Hydrant
Water Valve
Water Stand Post
Maintenance Hole (Storm Sewer)
Maintenance Hole (Sanitary)
Maintenance Hole (Unidentified)
Valve Chamber (Watermain)
Bollard
Sign
Catch Basin
Air Conditioner
Utility Pole
Anchor
Light Standard
Chain Link Fence
Board Fence
Post and Wire Fence
Location of Elevations
Top of Concrete Curb Elevation
Top of Wall Elevation
Centreline
Property Line
Bottom of Slope
Top of Slope
Edge of Asphalt
Moveable Curb
Top of Grate
Diameter
Window Well

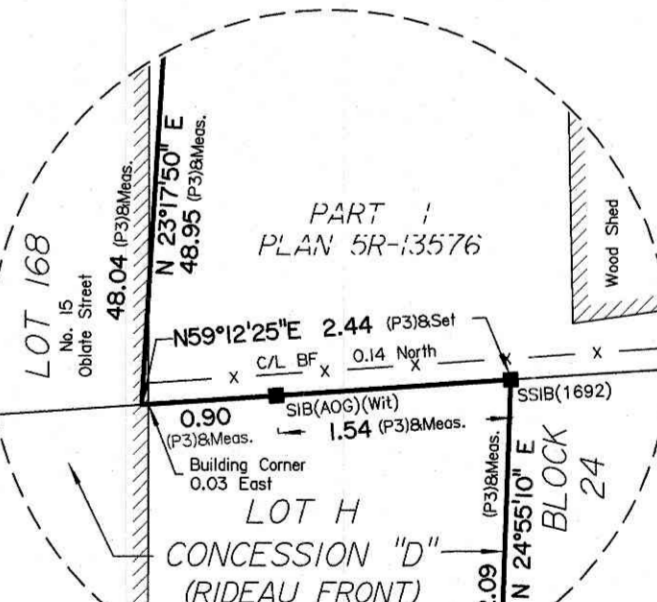
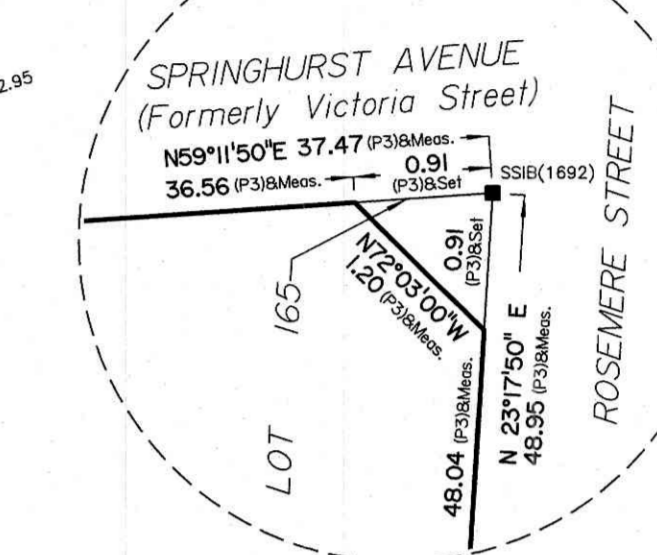
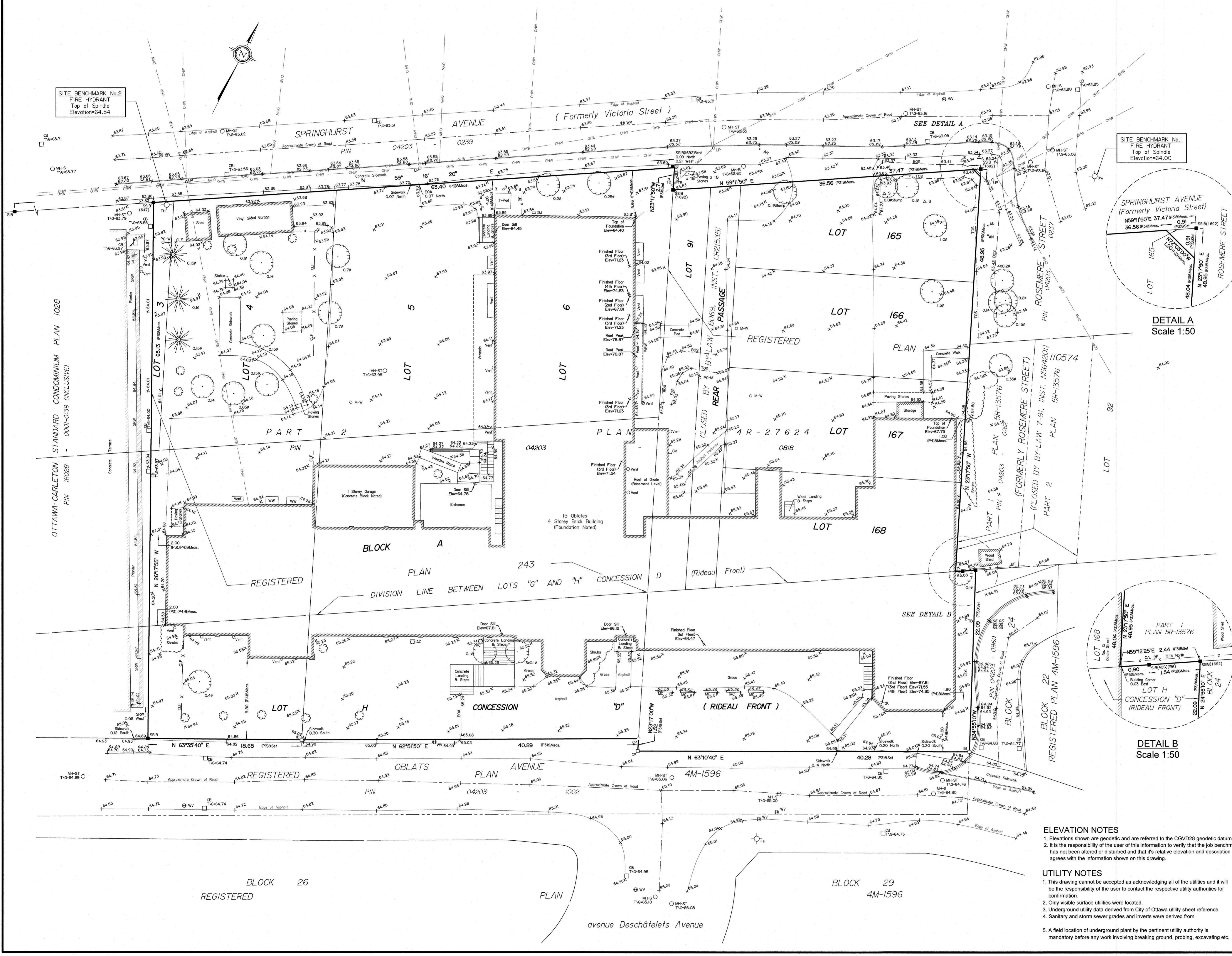
ASSOCIATION OF ONTARIO LAND SURVEYORS PLAN SUBMISSION FORM V-13587
THIS PLAN IS NOT VALID UNLESS IT IS AN EMBOSSED ORIGINAL COPY ISSUED BY THE SURVEYOR in accordance with Regulation 1025, Section 29 (3).

ELEVATION NOTES
1. Elevations shown are geodetic and are referred to the CGVD28 geodetic datum.
2. It is the responsibility of the user of this information to verify that the job benchmark has not been altered or disturbed and that its relative elevation and description agrees with the information shown on this drawing.

UTILITY NOTES
1. This drawing cannot be accepted as acknowledging all of the utilities and it will be the responsibility of the user to contact the respective utility authorities for confirmation.
2. Only visible surface utilities were located.
3. Underground utility data derived from City of Ottawa utility sheet reference.
4. Sanitary and storm sewer grades and inverts were derived from.
5. A field location of underground plant by the pertinent utility authority is mandatory before any work involving breaking ground, probing, excavating etc.

Bearings are grid, derived from the southerly limit of Springhurst Avenue per Plan 4R-27624.
SITE AREA = 6774.1 m²

ANNIS, O'SULLIVAN, VOLLEBEK LTD.
14 Concourse Gate, Suite 500
Nepean, Ont. K2E 7S6
Phone: (613) 727-0850 / Fax: (613) 727-1079
Email: info@anniso.com
Ontario Land Surveyors



SITE BENCHMARK No.2 FIRE HYDRANT Top of Spindle Elevation=64.54

SITE BENCHMARK No.1 FIRE HYDRANT Top of Spindle Elevation=64.00

STANDARD CONDOMINIUM PLAN 1028
OTTAWA-CARLETON PIN 160228
0007-039 (MCL515147)

BLOCK 26 REGISTERED PLAN

BLOCK 29 4M-1596

avenue Deschâtelets Avenue

Vertical text on the left edge of the drawing.