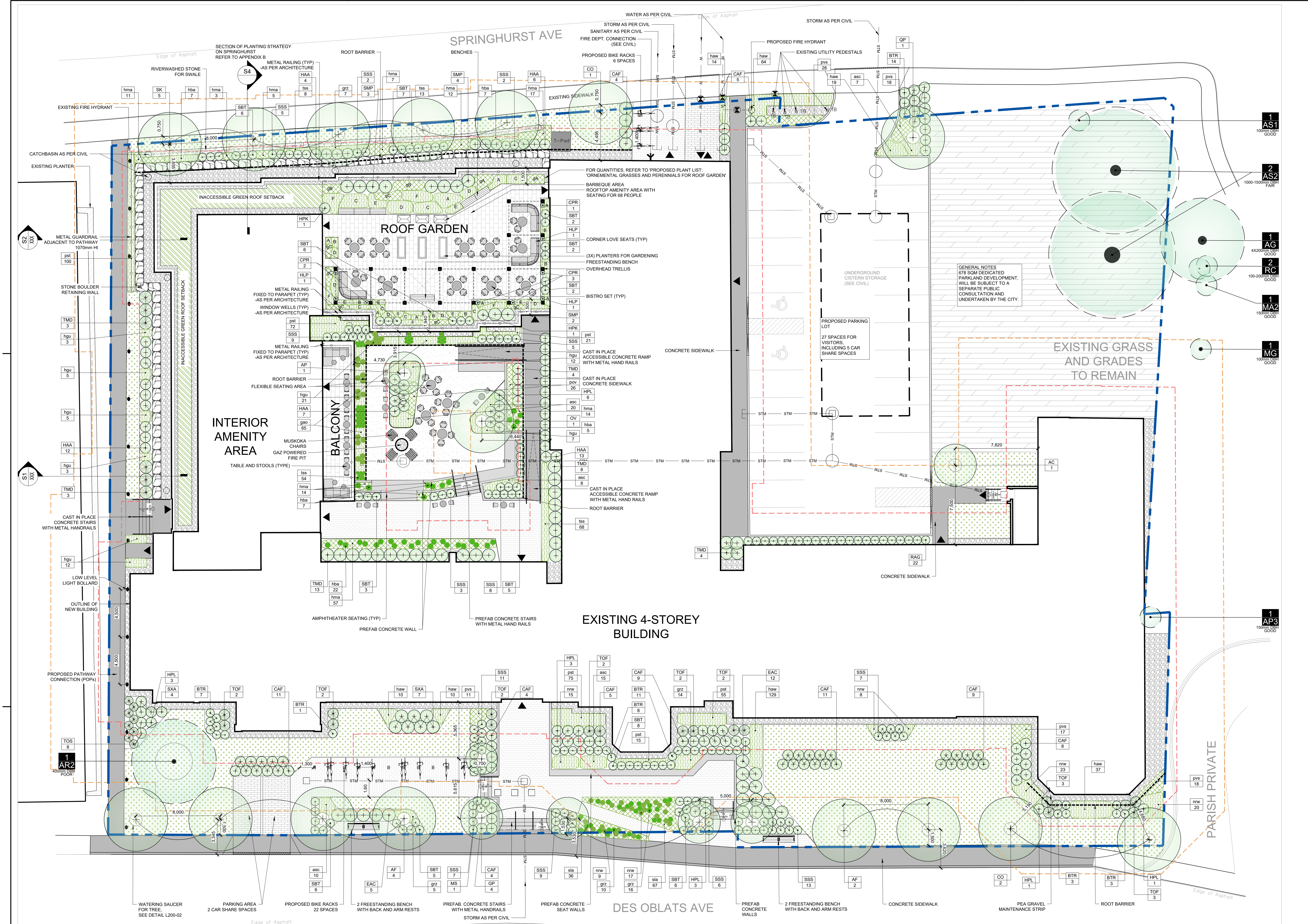
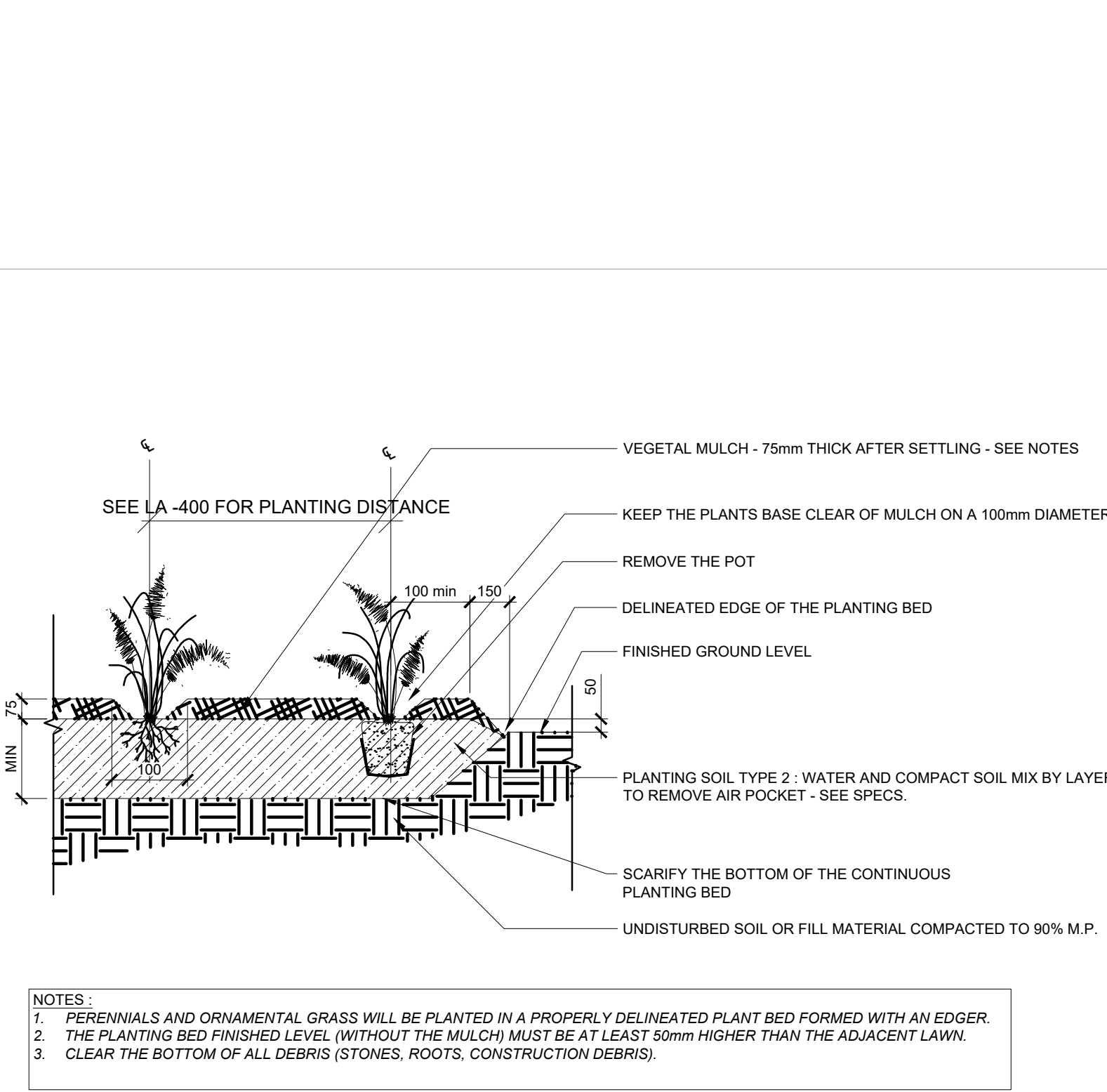
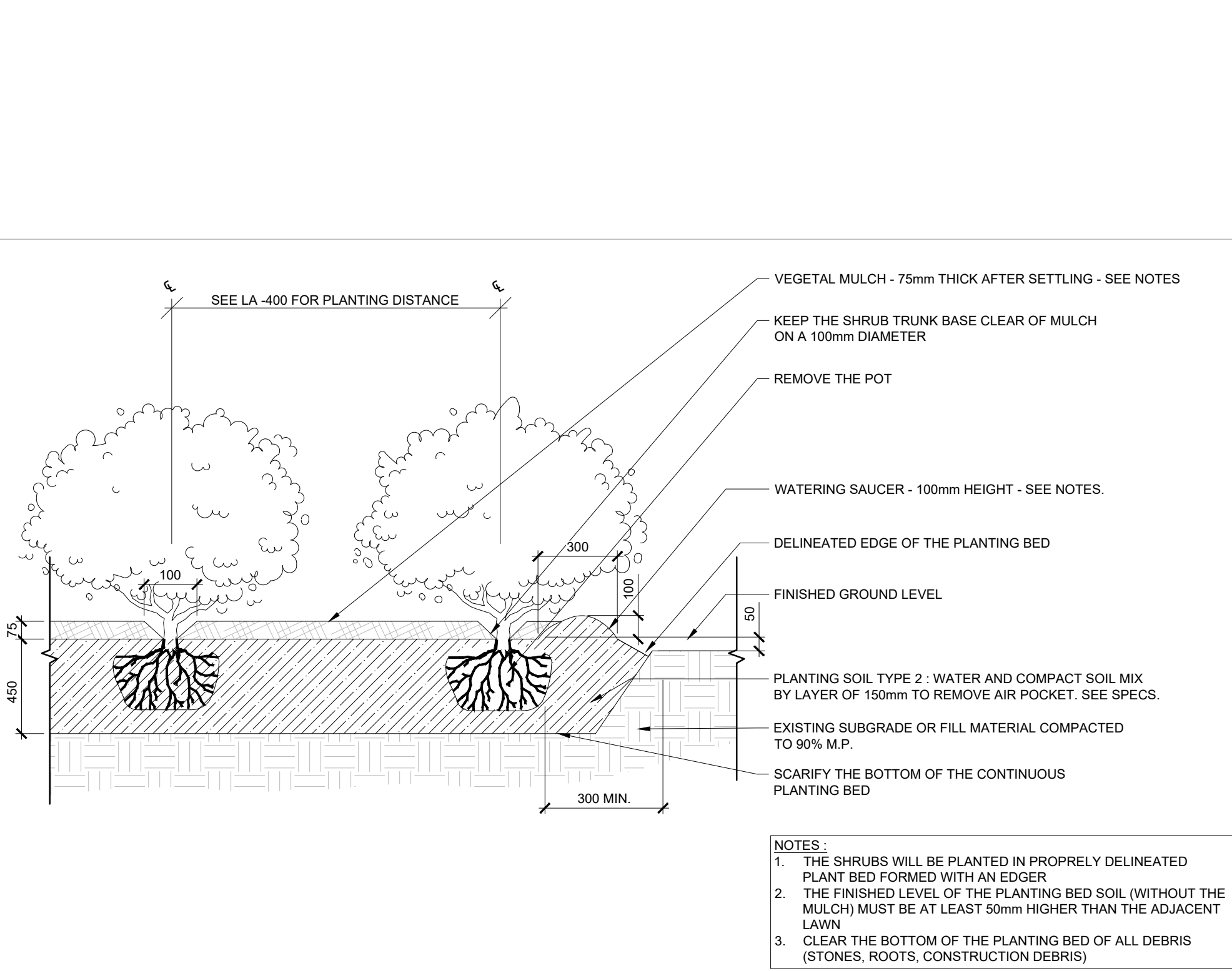
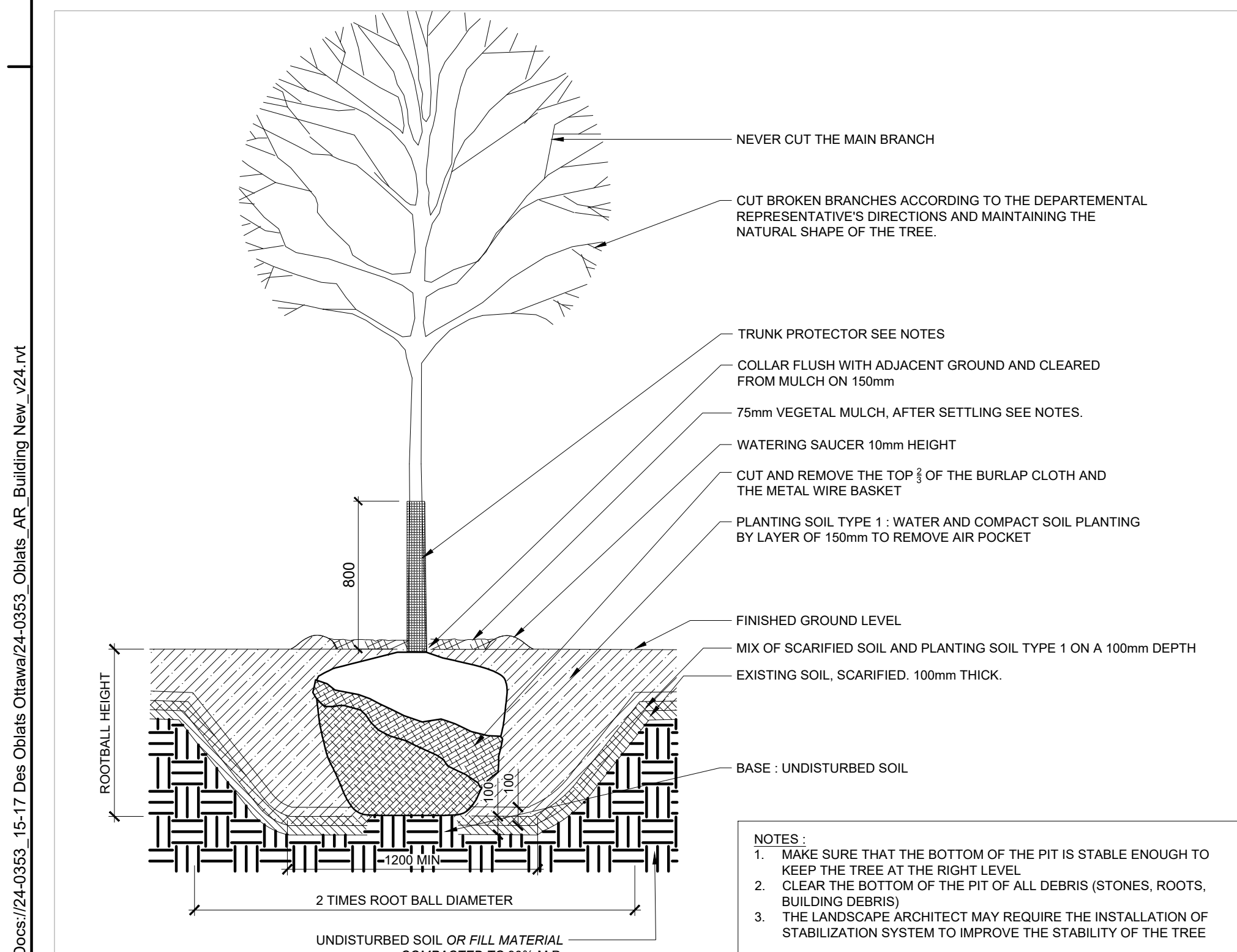


File Path: \\arabesque\Drawings\24-0353 15-17 Des Oblats Ottawa\24-0353 Des Oblats Building L200.dwg



03 LANDSCAPE PLAN
SCALE 1:150



PLANTING:

- THE LANDSCAPE PLAN HAS BEEN DEVELOPED IN CONJUNCTION WITH THE GEOTECHNICAL INVESTIGATION REPORT. REVISIONS TO THE PLAN SHALL BE MADE IN CONJUNCTION WITH THE GEOTECHNICAL INVESTIGATION REPORT.
- THE CONTRACTOR SHALL COMPLY WITH THE LANDSCAPING CONSIDERATIONS FOR TREE PLANTING SETBACKS AS OUTLINED IN SECTION 4.01 OF THE GEOTECHNICAL INVESTIGATION REPORT. WHERE A ROOT BARRIER IS REQUIRED, IT MUST BE INSTALLED IN ACCORDANCE WITH THE GEOTECHNICAL SPECIFICATIONS.
- THE CONTRACTOR SHALL UNDERTAKE THE PLANTING AS PROPOSED IN THE DRAWINGS AND AS SPECIFIED IN THE PLANTING SCHEDULE. THE CONTRACTOR SHALL BE RESPONSIBLE FOR THE SELECTION OF PLANTS.
- ALL PROPOSED TREES WILL BE PLANTED WITHIN A 5-17 OBLATS PRIVATE LANDS.
- ALL PLANTS SHALL BE NURSERY-GROWN AND SUPPLIED BY NURSERIES THAT SUPPORT SUSTAINABLE PRACTICES IN PLANT PRODUCTION.
- ANY CHANGES, MODIFICATIONS OR EQUIVALENCES PROPOSED BY THE CONTRACTOR IN THE CHOICE OF PLANTS SHALL BE APPROVED BY THE PROFESSIONAL ARCHITECT (OR LANDSCAPE ARCHITECT) PROVIDE GOOD CONTROL OF THE SUPPLIER BEFORE DELIVERY TO THE SITE OF THE PLANT.
- THE CONTRACTOR SHALL NOTIFY THE LANDSCAPE ARCHITECT OF DELIVERY OF PLANT MATERIALS AT LEAST 48 HOURS IN ADVANCE OF DELIVERY FOR REVIEW AND APPROVAL.
- THE CONTRACTOR SHALL ENSURE THAT THE PLANTS ARE HANDLED WITH CARE SO AS NOT TO BREAK UP, SCOURT, CRACK OR BRANCH. IF NECESSARY, APPLY AN ANTI-DESKANT TO THE TRUNK OF THE TREE. CUT AND REMOVE TOP 2/3 OF THE MAIN BRANCHES AND BRANCHES THAT DO NOT DRY OUT DURING TRANSPORT. ANY PLANT DAMAGE SHALL BE REPAIRED AT THE CONTRACTOR'S EXPENSE.
- ON SITE, ALL PLANTS SHOULD BE PROTECTED FROM SUN AND DRYING WINDS AND SHOULD BE WATERED FREQUENTLY UNTIL PLANTING.
- ALL PLANTS AND PLACES TOPSOIL TO A MINIMUM DEPTH OF 150MM IN SEED/5000 AREAS AND 400MM IN PLANTING BEDS UNLESS OTHERWISE SPECIFIED. EACH SOURCE OF TOPSOIL, IMPORTED OR NATIVE TO BE APPROVED BY LANDSCAPE ARCHITECT PRIOR TO USE. SUBMIT TOPSOIL ANALYSIS TEST RESULTS TO LANDSCAPE ARCHITECT PRIOR TO ORDER OR DELIVERY TO SITE. TESTING TO BE IN ACCORDANCE WITH CONTRACT SPECIFICATIONS. PREPARED TOPSOIL SHALL BE 400MM TOPSOIL TO ONE PART WELL NOTICED COMPOST.
- PLANTS AND PLANTING BEDS SHOULD BE LOCATED ACCORDING TO THE DRAWINGS AND SHALL BE OF SUFFICIENT SIZE ACCORDING TO THE DETAILS PROVIDED. THE CONTRACTOR SHALL OBTAIN APPROVAL OF THE PITS AND PLANTING BEDS BY THE LANDSCAPE ARCHITECT BEFORE ALL PLANTING.
- ALL SURFACES OF PLANTING BEDS (SHRUBS AND SAUCERS FOR THE PLANTING PITS) WILL BE COVERED WITH MULCH. B.F.T. MINIMUM 75MM THICK LEVEL. MULCH IS TO BE PULLED BACK FROM THE TRUNK OF THE TREE. CUT AND REMOVE TOP 2/3 OF THE MAIN BRANCHES AND BRANCHES THAT DO NOT DRY OUT.
- PLANTS SHOULD BE WATERED LESS THAN 100MM AFTER PLANTING AND AGAIN IN THE SAME DAY.
- ALL DECIDUOUS TREES AND CONIFERS SHALL BE PROTECTED AGAINST RODENTS WITH 200mm DIAMETER ARBORLOUSE TRUNK PROTECTORS OR APPROVED EQUIVALENT INSTALLED AT THE BASE OF THE TRUNK.

MAINTENANCE NOTES:

- CONTRACTOR SHALL GUARANTEE ALL PLANT MATERIAL FOR A PERIOD OF ONE (1) FULL YEAR FROM THE DATE OF FINAL ACCEPTANCE. UNLESS LOCATED ON PROPERTY WHERE A TWO (2) YEAR EXTENDED WARRANTY SHALL APPLY AS PER CITY OF OTTAWA STANDARDS.
- THE PLANT MATERIAL SHALL BE GUARANTEED TO BE THE SAME QUALITY AND SPECIFICATIONS AS THE MATERIALS PROVIDED FOR THE ORIGINAL MATERIAL. PLANTS WHICH HAVE DIED DURING THE PERIOD OF WARRANTY SHALL BE REPLACED UNDER WARRANTY. PLANTS WHICH HAVE DIED DURING THE PERIOD OF WARRANTY SHALL BE REPLACED UNDER WARRANTY. PLANTS WHICH HAVE DIED DURING THE PERIOD OF WARRANTY SHALL BE REPLACED UNDER WARRANTY.
- MAINTENANCE (WATERING) OF THE PLANTS IS INCLUDED AND CONTINUED THROUGHOUT THE ENTIRE WARRANTY PERIOD. THE CONTRACTOR SHALL PROVIDE MAINTENANCE REQUIREMENTS SHALL INCLUDE ALL PROCEDURES CONSISTENT WITH PROPER CULTIVATION, INCLUDING NORMAL, VIGOROUS, AND HEALTHY GROWTH OF ALL MATERIAL PLANTED INCLUDING SEED AND SOIL. MAINTENANCE SHALL INCLUDE BUT NOT BE LIMITED TO THE FOLLOWING:
 - REGULAR CULTIVATION AND WEED CONTROL OF PLANTING BEDS AND TREE PITS (NO PESTICIDES OR HERBICIDES IN ACCORDANCE WITH MUNICIPAL BY-LAWS AND PROVINCIAL LEGISLATION).
 - WATER A MINIMUM OF ONCE A WEEK FOR THE FIRST FOUR WEEKS, WHEN REQUIRED THEREAFTER AND IN SUFFICIENT QUANTITIES TO SATURATE THE ROOT SYSTEM AND TO INSURE SUPERIOR MOISTURE FOR VIGOROUS PLANT MATERIAL GROWTH. ENSURE ADEQUATE MOISTURE IN THE ROOTBALL AT TIME OF FIRST PRIST.
 - PRUNING, INCLUDING THE REMOVAL AND DISPOSAL OF DEAD OR BROKEN BRANCHES.
 - THE MAINTENANCE OF ALL ACCESSORIES IN GOOD CONDITION AND PROPERLY ADJUSTED INCLUDING THE REPAIR OR REPLACEMENT OF ACCESSORIES AS REQUIRED AT NO ADDITIONAL CHARGE TO THE OWNER.
- WINTER PROTECTION: NECESSARY PLANT PROTECTION SUCH AS BURLAP WRAPPING SHALL BE INSTALLED FOR ALL FRAGILE PLANTS TO PROTECT AGAINST WINDS OR LIGHT DAMAGE BY SNOW. FOR EXAMPLE, THE BASE OF THE BUILDING SUBJECT TO FALLING SNOW FROM ROOFS, OR IN AREAS SUBJECT TO SNOW DROPS, SHALL BE PROTECTED. THE PROTECTION SHALL BE REVIEWED AND APPROVED AT THE END OF THE PLANTING WORKS BY LANDSCAPE ARCHITECT. PROTECTIONS MUST BE ADAPTED TO EACH PLANT OR GROUP OF PLANTS ACCORDING TO THE SPECIFICATIONS OF THE LANDSCAPE ARCHITECT. STRUCTURES AND MATERIALS DEVELOPED FOR WINTER PROTECTION SHALL REMAIN IN THE POSSESSION OF THE CUSTOMER AFTER THE WARRANTY PERIOD OF THE WORK.
- AT THE TIME OF FINAL WARRANTY ACCEPTANCE, ALL MATERIAL MUST BE IN A HEALTHY AND VIGOROUS CONDITION, BEDS AND THE PITS MUST BE PROPERLY CULTIVATED AND FREE OF WEEDS, RUBBER, AND DEBRIS. ALL STAKES, WHEEL HOES AND OTHER ACCESSORIES MUST BE REMOVED UPON FINAL ACCEPTANCE, EXCEPT FOR PLANT MATERIAL UNDER WARRANTY.

PROPOSED PLANT LIST

KEY	QTY	BOTANICAL NAME	COMMON NAME	SIZE	CONDITION	NOTES
DECIDUOUS TREES						
AC	1	Amelanchier canadensis	Shadblow Serviceberry	200mm ht	B&B	Multi-stem
AF	6	Acer x freemanii 'Autumn Blaze'	Freeman's Maple	60mm dia.	B&B	
AP	1	Acer pensylvanicum	Striped Maple	1 gal pot	Potted	Single leader
CO	3	Cornus occidentalis	Common Hackberry	60mm dia.	B&B	
GP	4	Ginkgo biloba 'Autumn Gold'	Maiden Tree 'Autumn Gold'	60mm dia.	B&B	
MS	1	Magnolia stellata 'Royal Star'	Star Magnolia	200mm ht	B&B	Multi-stem
OV	1	Ostrya virginiana	Eastern Hop Hornbeam	60mm dia.	B&B	
QP	1	Quercus palustris	Pin Oak	60mm dia.	B&B	
SK	5	Gedidia fraxinifolia var. inermis 'Draves Streetkeeper'	Honeylocust	60mm dia.	B&B	
CONIFEROUS SHRUBS						
TMD	35	Taxus X Media 'Densiformis'	Dense Spreading Yew	500mm spr	Potted	1200mm o.c.
TOF	18	Thuja occidentalis 'Fastigata'	Pyramidal Cedar	1500mm ht	Potted	1000mm o.c.
DECIDUOUS SHRUBS						
BTR	47	Berberis thunbergii 'Royal Burgundy'	Japanese Barberry	400mm ht	Potted	800mm o.c.
CPR	6	Campsis radicans	Trumpet Vine	2 gal pot	Potted	
CAF	70	Cornus sericea 'Farrow Arctic Fire'	Arctic Fire Red Twig Dogwood	600mm ht	Potted	1000mm o.c.
CAF	17	Elaeagnus alata 'Compacta'	Dwarf Burning Bush	600mm ht	Potted	1200mm o.c.
HLP	3	Humulus lupulus	Common Hop	2 gal pot	Potted	
HAA	42	Hydrangea arborescens 'Annabelle'	Annabelle Hydrangea	2 gal pot	Potted	1000mm o.c.
HPK	2	Hydrangea paniculata 'Kyushu'	Kyushu Hydrangea	600mm ht	Potted	1000mm o.c.
HPL	17	Hydrangea paniculata 'Limelight'	Limelight Hydrangea	600mm ht	Potted	1000mm o.c.
RAG	22	Rhus aromatica 'Gro-Low'	Flragrant Sumac	400mm ht	Potted	800mm o.c.
SBT	58	Spiraea betulifolia 'Tor'	Birch Leaf Spirea	400mm ht	Potted	800mm o.c.
SMP	9	Syringa meyeri 'Palibin'	Dwarf Korean Lilac	400mm ht	Potted	1200mm o.c.
SSS	87	Sorbaria sorbifolia 'Sem'	Sem False Spirea	400mm ht	Potted	450mm o.c.
SXA	11	Spiraea x arguta 'Compacta'	Dwarf Grand Spirea	600mm ht	Potted	1200mm o.c.
TOS	8	Thuja occidentalis 'Smaragd'	Emerald Green Arborvitae	1500mm ht	Potted	800mm o.c.
ORNAMENTAL GRASSES						
hna	140	Hakonechloa macra 'Aureola'	Hakone Grass 'Aureola'	1L pot	Potted	400mm o.c.
pvs	92	Panicum virgatum 'Shenandoah'	Switch Grass 'Shenandoah'	1L pot	Potted	400mm o.c.
sia	103	Sesleria autumnalis	Autumn Moor Grass	1L pot	Potted	350mm o.c.
PERENNIALS						
asc	60	Anemone x hybrida 'September Charm'	Japanese Anemone	1L pot	Potted	450mm o.c.
gao	65	Galium odoratum	Sweet Woodruff	1L pot	Potted	400mm o.c.
grz	52	Geranium 'Rozanne'	Hardy Geranium 'Rozanne'	1L pot	Potted	450mm o.c.
hsw	283	Hemerocallis 'Alice in Wonderland'	Alice in Wonderland Daylily	1L pot	Potted	400mm o.c.
hba	48	Hosta 'Blue Angel'	Large Blue Hosta	1 gal pot	Potted	500mm o.c.
hgu	68	Hosta 'Guacamole'	Guacamole Hosta	1 gal pot	Potted	500mm o.c.
nrv	92	Nepeta racemosa 'Walker's Low'	Nepeta 'Walker's Low'	1L pot	Potted	450mm o.c.
pst	338	Pachyandra terminalis	Japanese Scourge	1L pot	Potted	300mm o.c.
pov	26	Polygonatum odoratum 'Variegatum'	Solomon's Seal	1L pot	Potted	400mm o.c.
tss	143	Tiarella cordifolia 'Sugar and Spice'	Foam Flower 'Sugar and Spice'	1L pot	Potted	300mm o.c.

PROPOSED PLANT LIST : ORNAMENTAL GRASSES AND PERENNIALS FOR ROOF GARDEN

KEY	CODE	QTY	BOTANICAL NAME	COMMON NAME	SIZE	CONDITION	WIDTH
ORNAMENTAL GRASSES							
pvs	gA	20	Panicum virgatum 'Shenandoah'	Switch Grass 'Shenandoah'	1L pot	Potted	400mm o.c.
sca	gB	16	Schizachyrium scoparium	Little Bluestem	1 gal pot	Potted	500mm o.c.
shh	gC	31	Sporobolus heterolepis	Prairie Dropseed	1L pot	Potted	450mm o.c.
PERENNIALS							
ami	A	45	Achillea millefolium	White Yarrow	1L pot	Potted	400mm o.c.
als	B	49	Allium schoenoprasum	Chives	1L pot	Potted	300mm o.c.
emc	C	49	Echinacea purpurea 'Magnus'	Magnus Coneflower	1L pot	Potted	450mm o.c.
saj	D	45	Sedum 'Autumn Joy'	Stonecrop 'Herbstfreude'	1L pot	Potted	450mm o.c.
se	E	66	Sedum kamishihatum	Orange Stonecrop	1L pot	Potted	300mm o.c.
srf	F	35	Solidago rugosa 'Fireworks'	Rough Goldenrod	1 gal pot	Potted	500mm o.c.

CLIENT

FORUM ASSET MANAGEMENT
EAST PODIUM, 2ND FLOOR
181 BAY STREET
TORONTO, ON M5G 2T3

T: 416-947-0389
WWW.FORUM.COM

ARCHITECTURE

lemay
Lemay Co Inc

SUITE 401
600 KENNEDY ST E
TORONTO, ON M3G 3E4

T: 647-254-1385
WWW.LEMAY.CO

STRUCTURAL

D&M Structural Engineering

110
333 Preston Street
Ottawa, ON K1S 2N4

T: 613-651-5880
WWW.DMSTRUCT.COM

MECHANICAL & ELECTRICAL

3500
Saint-Jacques Street
Montreal, QC H2C 1H2

T: 514-923-1501
WWW.LEMAY.CO

CIVIL

300
2611 Queenview Drive
Ottawa, ON K2B 1K2

T: 613-629-2800
WWW.WEGROUP.COM

SURVEYOR

Aanis, O'Sullivan, Volkobak Ltd.

Suite 500
14 Concordia Gate
Nepean, ON K2E 1S6

NOTES

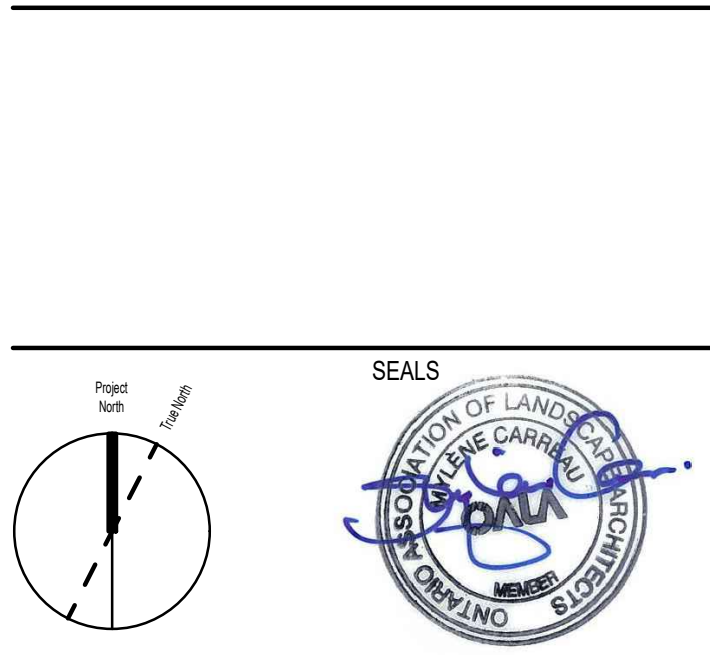
- CONTRACTOR TO CHECK AND VERIFY ALL DIMENSIONS PRIOR TO COMMENCING WORK.
- CONTRACTOR TO COMPLY WITH ALL BUILDING CODES, REGULATIONS, AND ORDINANCES OF AUTHORITIES HAVING JURISDICTION.
- THIS DRAWING IS NOT TO BE USED FOR CONSTRUCTION BY LEMAY ARCHITECTURE AND DESIGN LTD.
- DO NOT SCALE DRAWING.
- THIS DRAWING MAY NOT BE COPIED, ALTERED, OR DISTRIBUTED IN WHOLE OR IN PART WITHOUT WRITTEN PERMISSION. COPYRIGHT © LEMAY ARCHITECTURE AND DESIGN LTD.
- REPORT ANY ERRORS AND OMISSIONS TO THE CONSULTANT IMMEDIATELY BEFORE COMMENCING WORK.
- DEVIATIONS FROM THE CONTRACT DOCUMENTS WITHOUT WRITTEN APPROVAL FROM CONSULTANT ARE SUBJECT TO CORRECTIONS AT CONTRACTOR EXPENSE.
- DIMENSIONS ARE IN METRIC (MM) UNLESS NOTED OTHERWISE.

LEGEND

- LIMIT OF PROPERTY
- 7.5m SETBACK GEOTECHNICAL REQUIREMENT
- 3m SETBACK GEOTECHNICAL REQUIREMENT
- EXISTING TREE TO REMAIN AND PROTECT REFER TO 100 FOR SPECIES
- PROPOSED DECIDUOUS TREE
- PROPOSED DECIDUOUS SHRUBS
- PROPOSED CONIFEROUS SHRUBS
- PROPOSED BIKE RACKS
- PROPOSED PRECAST BENCH WITH BACK AND ARM RESTS
- PROPOSED BENCH
- PROPOSED LOW LEVEL LIGHT ROLLER (REFER TO APPENDIX A PHOTOGRAPHY)
- PROPOSED METAL GUARDRAIL
- PROPOSED METAL HAND RAIL
- PROPOSED ROOT BARRIER "DEEPROOT" UB 48-2 MODEL
- PROPOSED SEEDING AREAS
- PROPOSED SEEDING AREA (ROOF)
- PROPOSED PERENNIALS / ORNAMENTAL GRASSES
- PROPOSED CRUSHED STONE OR LIGHT MATERIAL
- PROPOSED PRECAST CONCRETE PAVERS (RECTANGULAR)
- PROPOSED PRECAST CONCRETE PAVERS (HEXAGONAL)
- PROPOSED PRECAST CONCRETE PAVERS ON ROOF
- PROPOSED PEA GRAVEL FOR MAINTENANCE STRIP
- PROPOSED PRECAST CONCRETE STAIRS / WALL / SEAT WALLS
- PROPOSED CAST IN PLACE CONCRETE PAVEMENT
- BUILDING ACCESS OR EGRESS

ISSUE

#	DATE	DESCRIPTION
1	2024-09-08	ISSUED FOR SPA RESUBMISSION - REVISION 1
2	2024-11-13	ISSUED FOR SPA RESUBMISSION - REVISION 2
3	2024-11-27	ISSUED FOR SPA RESUBMISSION - REVISION 3



PROJECT NUMBER & PROJECT NAME
24-0353 - 15(17) OBLATS AVENUE, OTTAWA

SHEET NAME

PLANTING PLAN

APPROVED BY
MYLENE CARREAU
CHECKED BY
MYLENE CARREAU
DRAWN BY
TAN AU CA NGUYEN

SCALE
1:100

DATE / TIME STAMP
11/27/2024 1:05:13 PM

SHEET NUMBER
L.200

DATE / TIME STAMP
11/27/2024 1:05:13 PM

DATE / TIME STAMP
11/27/2024 1:05:13 PM

DATE / TIME STAMP
11/27/2024 1:05:13 PM

DATE / TIME STAMP
11/27/2024 1:05:13 PM

DATE / TIME STAMP
11/27/2024 1:05:13 PM

DATE / TIME STAMP
11/27/2024 1:05:13 PM

DATE / TIME STAMP
11/27/2024 1:05:13 PM

DATE / TIME STAMP
11/27/2024 1:05:13 PM