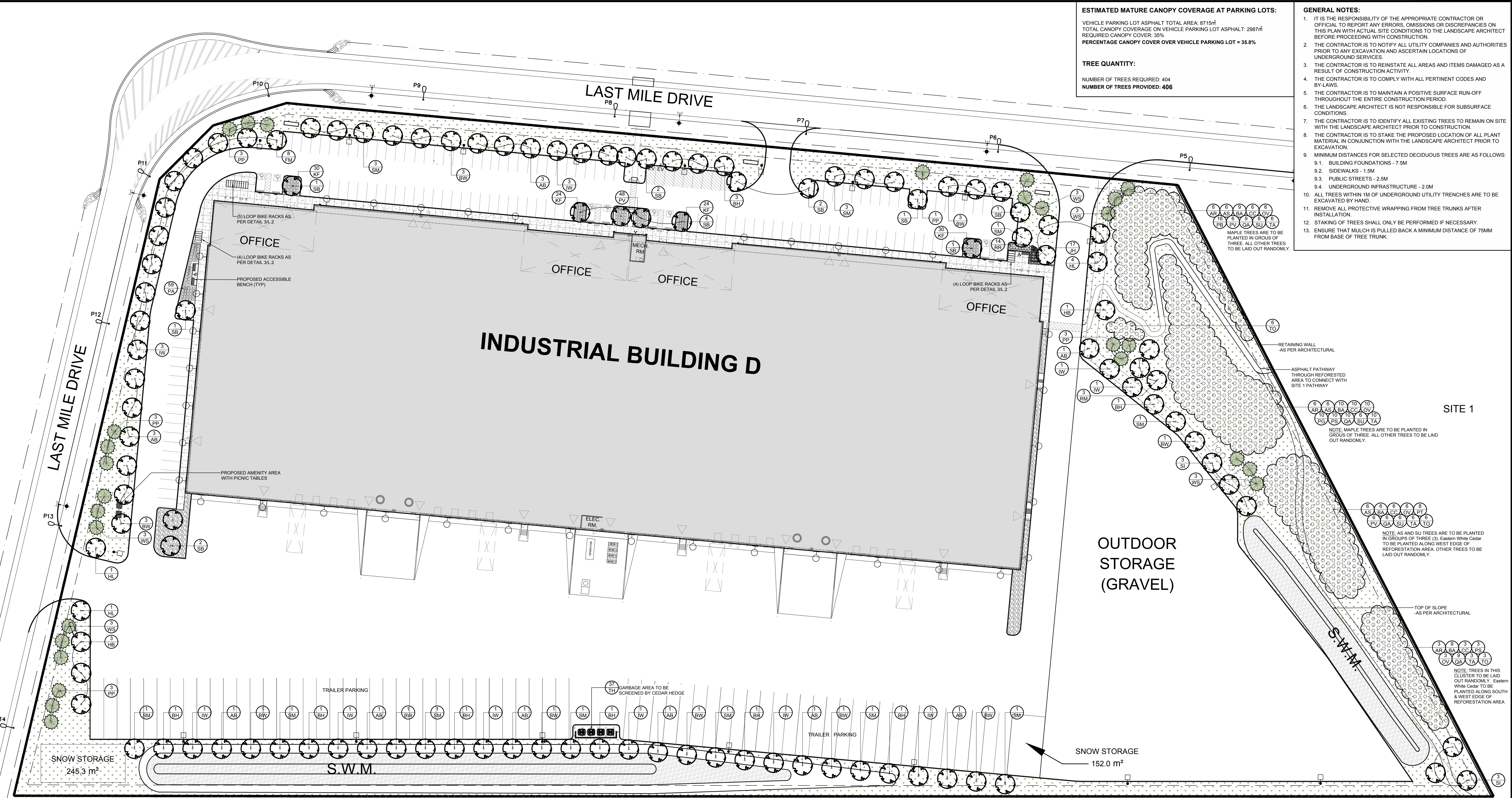


ESTIMATED MATURE CANOPY COVERAGE AT PARKING LOTS:
 VEHICLE PARKING LOT ASPHALT TOTAL AREA: 8715m²
 TOTAL CANOPY COVERAGE ON VEHICLE PARKING LOT ASPHALT: 2987m²
 REQUIRED CANOPY COVER: 35%
PERCENTAGE CANOPY COVER OVER VEHICLE PARKING LOT = 35.8%

TREE QUANTITY:
 NUMBER OF TREES REQUIRED: 404
 NUMBER OF TREES PROVIDED: 406

- GENERAL NOTES:**
- IT IS THE RESPONSIBILITY OF THE APPROPRIATE CONTRACTOR OR OFFICIAL TO REPORT ANY ERRORS, OMISSIONS OR DISCREPANCIES ON THIS PLAN WITH ACTUAL SITE CONDITIONS TO THE LANDSCAPE ARCHITECT BEFORE PROCEEDING WITH CONSTRUCTION.
 - THE CONTRACTOR IS TO NOTIFY ALL UTILITY COMPANIES AND AUTHORITIES PRIOR TO ANY EXCAVATION AND ASCERTAIN LOCATIONS OF UNDERGROUND SERVICES.
 - THE CONTRACTOR IS TO REINSTATE ALL AREAS AND ITEMS DAMAGED AS A RESULT OF CONSTRUCTION ACTIVITY.
 - THE CONTRACTOR IS TO COMPLY WITH ALL PERTINENT CODES AND BY-LAWS.
 - THE CONTRACTOR IS TO MAINTAIN A POSITIVE SURFACE RUN-OFF THROUGHOUT THE ENTIRE CONSTRUCTION PERIOD.
 - THE LANDSCAPE ARCHITECT IS NOT RESPONSIBLE FOR SUBSURFACE CONDITIONS.
 - THE CONTRACTOR IS TO IDENTIFY ALL EXISTING TREES TO REMAIN ON SITE WITH THE LANDSCAPE ARCHITECT PRIOR TO CONSTRUCTION.
 - THE CONTRACTOR IS TO STAKE THE PROPOSED LOCATION OF ALL PLANT MATERIAL IN CONJUNCTION WITH THE LANDSCAPE ARCHITECT PRIOR TO EXCAVATION.
 - MINIMUM DISTANCES FOR SELECTED DECIDUOUS TREES ARE AS FOLLOWS:
 - BUILDING FOUNDATIONS - 7.5M
 - SIDEWALKS - 1.5M
 - PUBLIC STREETS - 2.5M
 - UNDERGROUND INFRASTRUCTURE - 2.0M
 - ALL TREES WITHIN 1M OF UNDERGROUND UTILITY TRENCHES ARE TO BE EXCAVATED BY HAND.
 - REMOVE ALL PROTECTIVE WRAPPING FROM TREE TRUNKS AFTER INSTALLATION.
 - STAKING OF TREES SHALL ONLY BE PERFORMED IF NECESSARY.
 - ENSURE THAT MULCH IS PULLED BACK A MINIMUM DISTANCE OF 75MM FROM BASE OF TREE TRUNK.



PROPOSED PLANT LIST

KEY	QTY	BOTANICAL NAME	COMMON NAME	SIZE	CONDITION	SPACING
AB	13	<i>Ulmus davidiana</i> var. <i>japonica</i>	Prospector Elm	60mm dia.	B&B	
BH	10	<i>Gymnocladus dioica</i>	Kentucky Coffee Tree	60mm dia.	B&B	
BW	16	<i>Quercus alba</i>	White Oak	60mm dia.	B&B	
FM	8	<i>Acer x freemanii</i>	Freeman's Maple	60mm dia.	B&B	
HL	4	<i>Celtis occidentalis</i>	Hackberry	60mm dia.	B&B	
HL	6	<i>Gleditsia tricanthos</i>	Skyline Honeylocust	60mm dia.	B&B	
IW	14	<i>Betula alleghaniensis</i>	Yellow Birch	60mm dia.	B&B	
PP	13	<i>Picea pungens</i>	Colorado Spruce	1800mm HT.	B&B	
RM	3	<i>Aesculus hippocastanum</i>	Horse Chestnut	60mm dia.	B&B	
SB	15	<i>Ambrosia artemisiifolia</i>	Silver Chokeberry	60mm dia.	B&B	
SI	6	<i>Acer saccharinum</i>	Silver Maple	60mm dia.	B&B	
SM	15	<i>Populus deltoides</i>	Eastern Cottonwood	60mm dia.	B&B	
WS	15	<i>Picea glauca</i>	White Spruce	1800mm HT.	B&B	

REFOREST AREA TREES

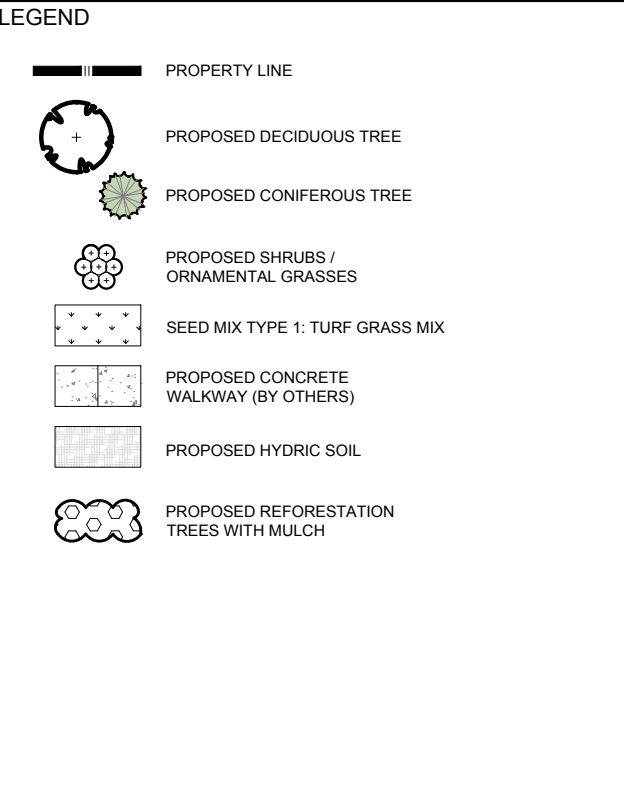
KEY	QTY	BOTANICAL NAME	COMMON NAME	SIZE	CONDITION	SPACING
AR	15	<i>Acer rubrum</i>	Red Maple	3.0m HT.	Potted	3m o.c. random layout
AS	18	<i>Acer saccharinum</i>	Silver Maple	3.0m HT.	Potted	3m o.c. see plan
BA	34	<i>Betula alleghaniensis</i>	Yellow Birch	3.0m HT.	Potted	3m o.c. random layout
CC	25	<i>Carya cordiformis</i>	Bitternut Hickory	3.0m HT.	Potted	3m o.c. random layout
OV	25	<i>Ostrya virginiana</i>	Ironwood	3.0m HT.	Potted	3m o.c. random layout
PB	16	<i>Populus balsamifera</i>	Balsam Poplar	3.0m HT.	Potted	3m o.c. random layout
PG	10	<i>Populus grandidentata</i>	Large Tooth Aspen	3.0m HT.	Potted	3m o.c. random layout
PS	13	<i>Prunus serotina</i>	Black Cherry	1.0m HT.	Potted	3m o.c. random layout
PT	8	<i>Populus tremuloides</i>	Trembling Aspen	3.0m HT.	Potted	3m o.c. random layout
PV	12	<i>Prunus virginiana</i>	Chokecherry	2.0m HT.	Potted	3m o.c. random layout
QA	25	<i>Quercus alba</i>	White Oak	3.0m HT.	Potted	3m o.c. random layout
SU	18	<i>Acer saccharum</i>	Sugar Maple	3.0m HT.	Potted	3m o.c. see plan
TA	22	<i>Tilia americana</i>	Basswood	3.0m HT.	Potted	3m o.c. random layout
TO	27	<i>Thuja occidentalis</i>	Eastern White Cedar	1800mm HT.	Potted	3m o.c. see plan

SHRUBS / PERENNIALS

KEY	QTY	BOTANICAL NAME	COMMON NAME	SIZE	CONDITION	SPACING
JH	17	<i>Juniperus horizontalis</i>	Bar Harbor Juniper	600 mm spr.	Potted	800mm o.c.
KF	108	<i>Calamagrostis x acutiflora</i>	Karl Foerster Grass	250mm pot	Potted	800mm o.c.
PA	59	<i>Phalaris arundinacea</i>	Strawberries & Cream Ribbon Grass	250mm pot	Potted	600 mm o.c.
PV	48	<i>Panicum virgatum</i>	Prairie Fire Red Switch Grass	100mm pot	Potted	750mm o.c.
RR	14	<i>Rosa rugosa</i>	Rugosa Rose	800mm ht.	Potted	800mm o.c.
TH	37	<i>Thuja occidentalis</i>	Eastern White Cedar Hedge	1500mm ht.	Bare root	Space 400mm o.c.

SEED MIXTURES

Latin name	Common name	% of mix	Application & rate
TYPE 1 - TURF GRASS MIX			
<i>Poa pratensis</i>	Kentucky Bluegrass	40%	Ternseed at rate of 180g/m ²
<i>Festuca rubra</i>	Creeping Red Fescue	40%	
<i>Lolium perenne</i>	Perennial Ryegrass	20%	



CONSULTANTS

ARCHITECTS: **WARE MALCOMB**
 180 BAYVIEW DRIVE, UNIT 103, VAUGHAN, ONTARIO
 TEL: (905) 709-1211

CIVIL ENGINEERS: **LRJ**
 LANDSCAPE ARCHITECTS

SCALE
 1:500

PROJECT NORTH

CLIENT
 AVENUE 31 CAPITAL INC
 801-250 City Centre, Ottawa, ON, K1R 6K7
 C 613-799-2422

PROJECT
 NATIONAL CAPITAL BUSINESS PARK - SITE 2
 4120 RUSSEL RD (1100 & 1200 LAST MILE DR), OTTAWA

DRAWING
 LANDSCAPE PLAN

STAMP
 JAMES B. LENNOX & ASSOCIATES INC. LANDSCAPE ARCHITECTS
 3332 CARLING AVE. OTTAWA, ONTARIO K2H 5A8
 TEL: (613) 722-5168 FAX: (866) 343-3942

PROJECT NO.
 22MIS2277

START DATE
 AUGUST 2022

DRAWING NO.
L.1