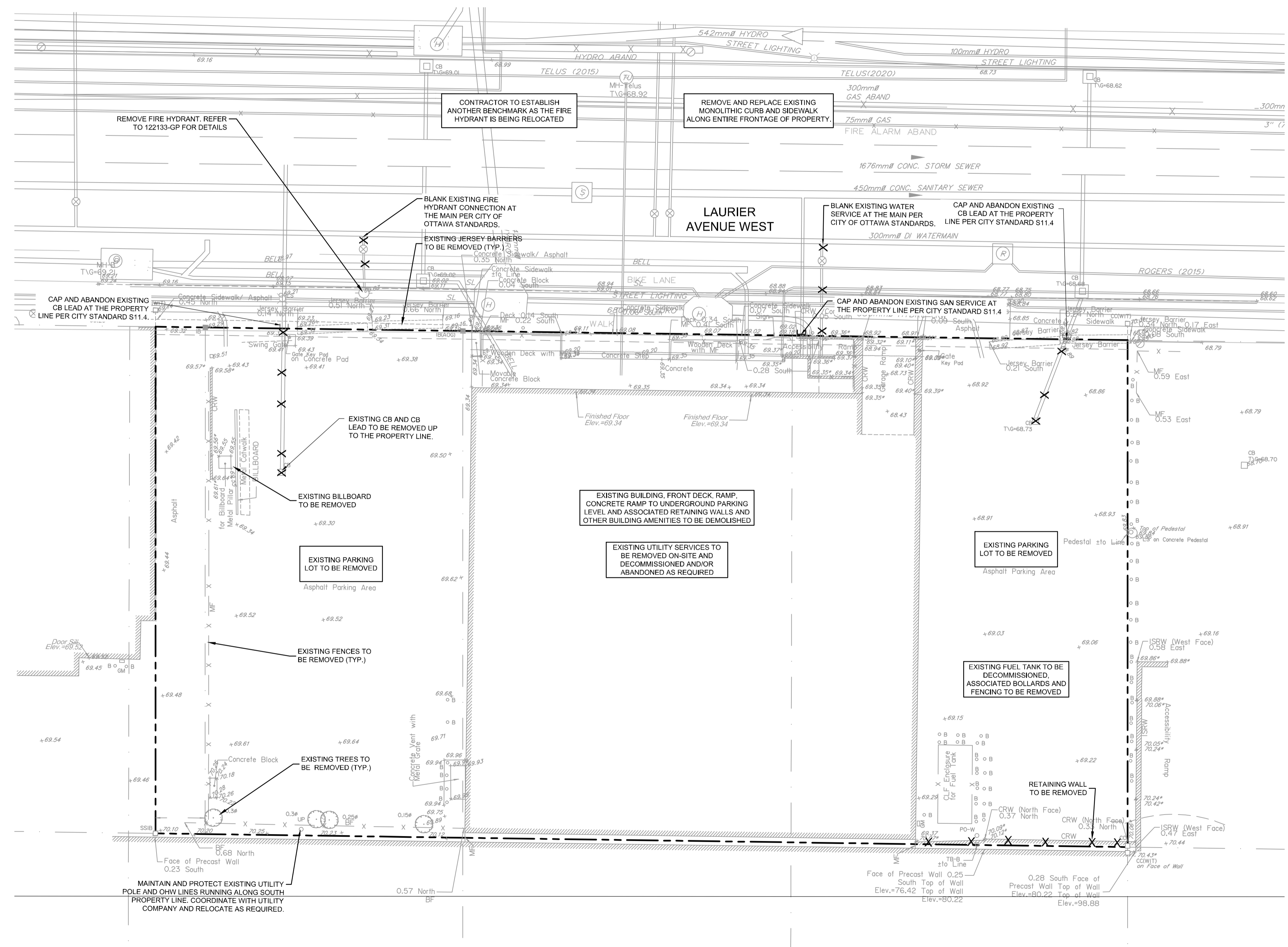


**GENERAL NOTES:**

- COORDINATE AND SCHEDULE ALL WORK WITH OTHER TRADES AND CONTRACTORS.
- DETERMINE THE EXACT LOCATION, SIZE, MATERIAL AND ELEVATION OF ALL EXISTING UTILITIES PRIOR TO COMMENCING CONSTRUCTION. PROTECT AND ASSUME RESPONSIBILITY FOR ALL EXISTING UTILITIES WHETHER OR NOT SHOWN ON THIS DRAWING.
- ALL ELEVATIONS ARE GEODETIC.

**LEGEND**

- REMOVALS**
- EXISTING CONCRETE CURB
  - EXISTING VALVE & VALVE BOX
  - EXISTING SERVICE POST
  - EXISTING HYDRANT
  - EXISTING CATCHBASIN
  - EXISTING CATCHBASIN/MH
  - EXISTING UTILITY POLE
  - EXISTING GUY WIRES
  - EXISTING TREES/VEGETATION



*Andrew McCreight*

**ANDREW MCCREIGHT**  
MANAGER, DEVELOPMENT REVIEW CENTRAL  
PLANNING, REAL ESTATE & ECONOMIC DEVELOPMENT  
DEPARTMENT, CITY OF OTTAWA

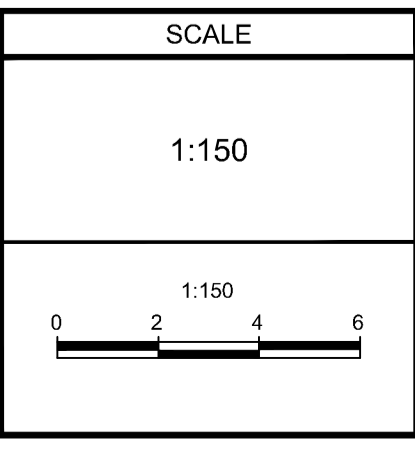
**APPROVED**  
By Andrew McCreight at 12:07 pm, Apr 10, 2024

**NOTE:**  
THE POSITION OF ALL POLE LINES, CONDUITS, WATERMANS, SEWERS AND OTHER UNDERGROUND AND OVERGROUND UTILITIES AND STRUCTURES IS NOT NECESSARILY SHOWN ON THE CONTRACT DRAWINGS, AND WHERE SHOWN, THE ACCURACY OF THE POSITION OF SUCH UTILITIES AND STRUCTURES IS NOT GUARANTEED. BEFORE STARTING WORK, DETERMINE THE EXACT LOCATION OF ALL SUCH UTILITIES AND STRUCTURES AND ASSUME ALL LIABILITY FOR DAMAGE TO THEM.

**OWNER INFORMATION**  
JADCO Group  
345 Boulevard Samson  
Laval, QC H7X 2Z7

**CONTACT: ANDRÉ DOUDAK**  
Tel: (613) 791-1970  
EMAIL: adoudak@jadcogroup.com

No.	REVISION	DATE	BY
3.	REVISED AS PER CITY COMMENTS	OCT 20/23	FST
2.	REVISED AS PER CITY COMMENTS	JUN 5/23	FST
1.	ISSUED FOR SPC APPLICATION	AUG 30/22	FST



DESIGN	CV
CHECKED	FST
DRAWN	CV
CHECKED	FST
APPROVED	FST



**NOVATECH**  
Engineers, Planners & Landscape Architects  
Suite 200, 240 Michael Cowpland Drive  
Ottawa, Ontario, Canada K2M 1P6

Telephone: (613) 254-9643  
Facsimile: (613) 254-5867  
Website: www.novatech-eng.com

<b>LOCATION</b> CITY OF OTTAWA 150 LAURIER AVENUE WEST		<b>PROJECT No.</b> 122133
<b>DRAWING NAME</b> EXISTING CONDITIONS AND REMOVALS PLAN		<b>REV #</b> REV # 3
		<b>DRAWING No.</b> 122133-REM
		<b>PLAN #</b> 18833

M:\2023\122133\CAD\Civil\122133-REM.dwg, 122133-REM.dwg, Oct 20, 2023 - 11:29am, cwhesr

D07-12-22-0128