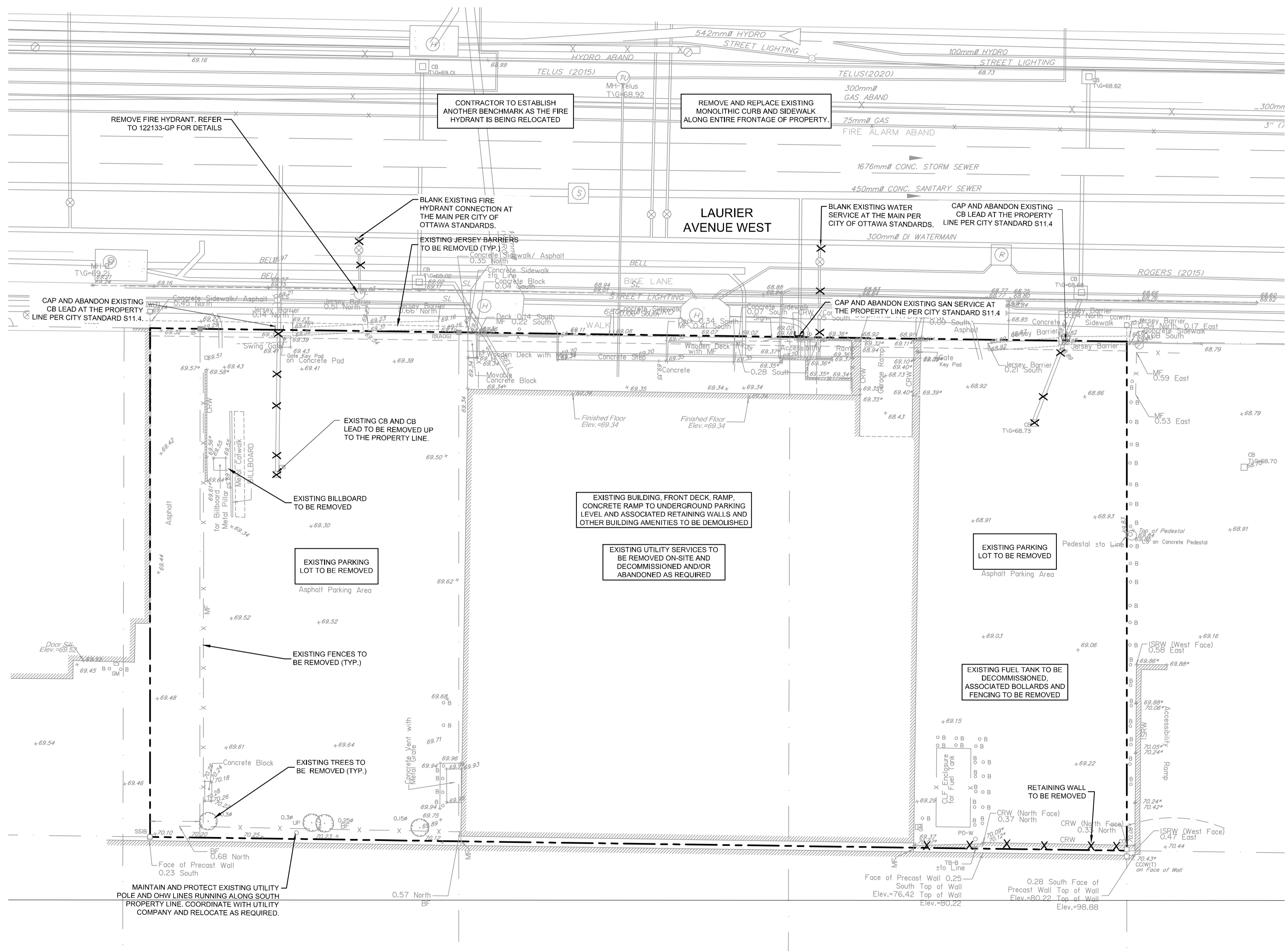
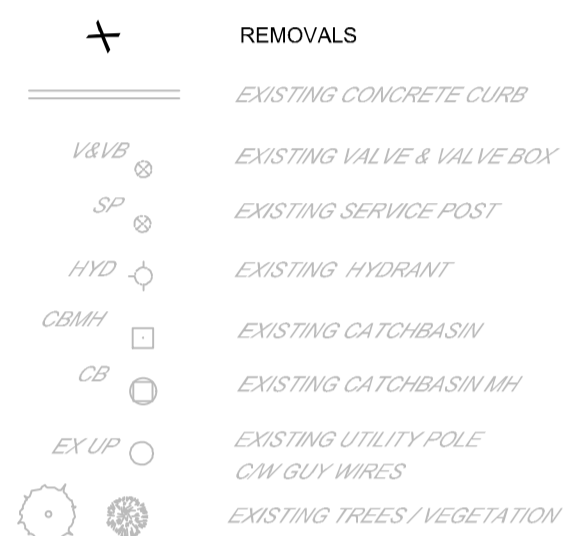


GENERAL NOTES:

- COORDINATE AND SCHEDULE ALL WORK WITH OTHER TRADES AND CONTRACTORS.
- DETERMINE THE EXACT LOCATION, SIZE, MATERIAL AND ELEVATION OF ALL EXISTING UTILITIES PRIOR TO COMMENCING CONSTRUCTION. PROTECT AND ASSUME RESPONSIBILITY FOR ALL EXISTING UTILITIES WHETHER OR NOT SHOWN ON THIS DRAWING.
- ALL ELEVATIONS ARE GEODETIC.

LEGEND

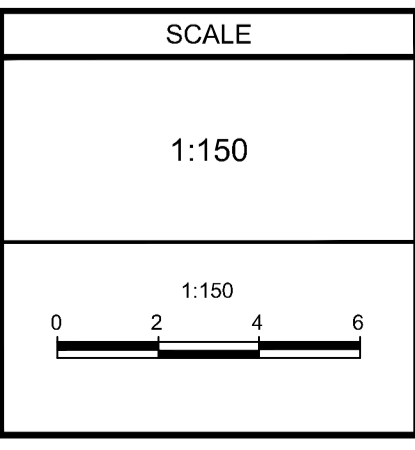


NOTE:
THE POSITION OF ALL POLE LINES, CONDUITS, WATERMANS, SEWERS AND OTHER UNDERGROUND AND OVERGROUND UTILITIES AND STRUCTURES IS NOT NECESSARILY SHOWN ON THE CONTRACT DRAWINGS, AND WHERE SHOWN, THE ACCURACY OF THE POSITION OF SUCH UTILITIES AND STRUCTURES IS NOT GUARANTEED. BEFORE STARTING WORK, DETERMINE THE EXACT LOCATION OF ALL SUCH UTILITIES AND STRUCTURES AND ASSUME ALL LIABILITY FOR DAMAGE TO THEM.

OWNER INFORMATION
JADCO Group
345 Boulevard Samson
Laval, QC H7X 2Z7

CONTACT: ANDRÉ DOUDAK
Tel: (613) 791-1970
EMAIL: adoudak@jadcogroup.com

No.	REVISION	DATE	BY
3.	REVISED AS PER CITY COMMENTS	OCT 20/23	FST
2.	REVISED AS PER CITY COMMENTS	JUN 5/23	FST
1.	ISSUED FOR SPC APPLICATION	AUG 30/22	FST



DESIGN	CV
CHECKED	FST
DRAWN	CV
CHECKED	FST
APPROVED	FST



NOVATECH
Engineers, Planners & Landscape Architects
Suite 200, 240 Michael Cowpland Drive
Ottawa, Ontario, Canada K2M 1P6
Telephone: (613) 254-9643
Facsimile: (613) 254-5867
Website: www.novatech-eng.com

LOCATION CITY OF OTTAWA 150 LAURIER AVENUE WEST	
DRAWING NAME EXISTING CONDITIONS AND REMOVALS PLAN	
PROJECT No.	122133
REV	REV # 3
DRAWING No.	122133-REM
PLAN #18833	

M:\2023\122133\CAD\Civil\122133-REM.dwg, 122133-REM.dwg, Oct 20, 2023, 11:29am, csherr

D07-12-22-0128