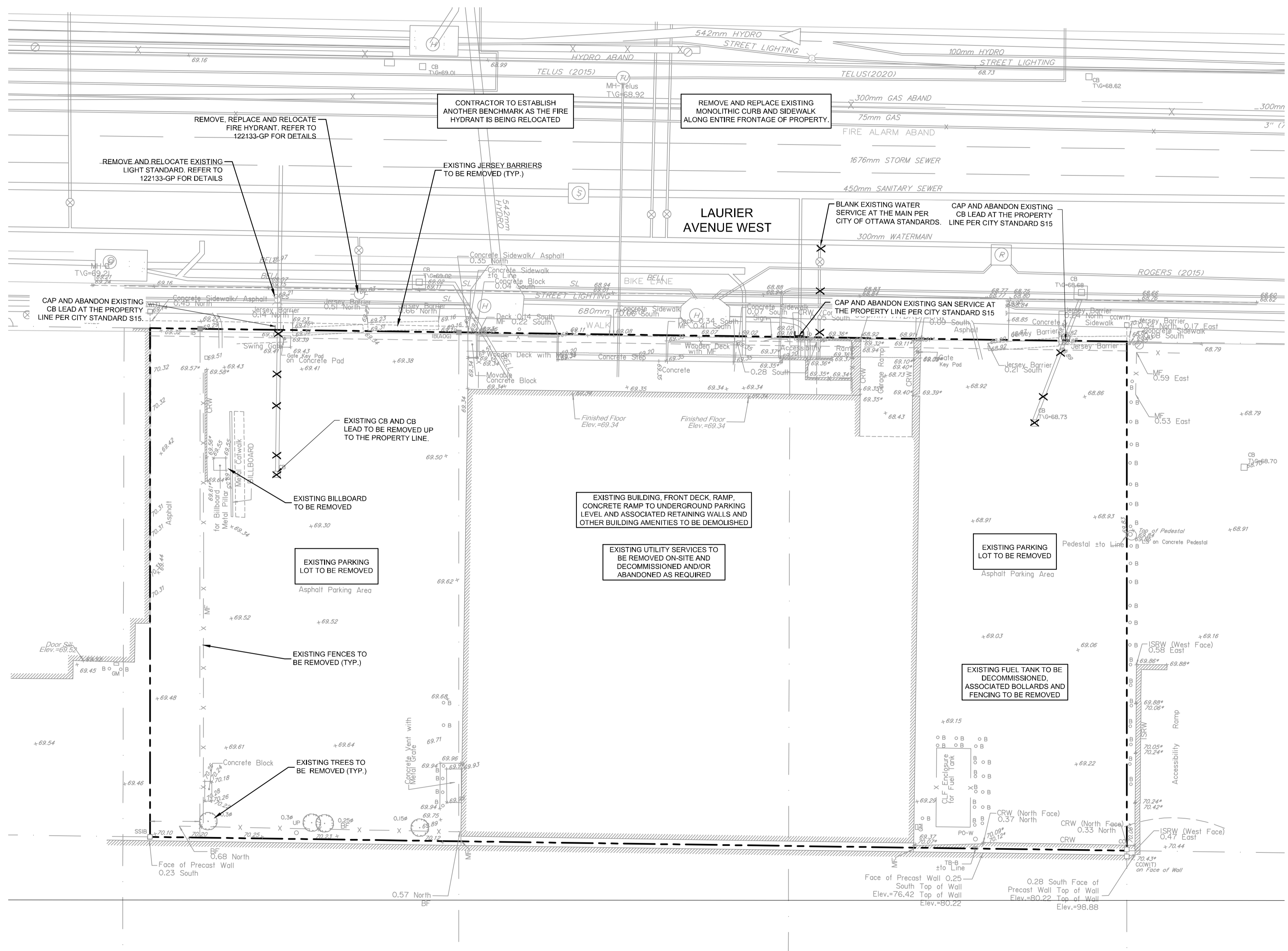


**GENERAL NOTES:**

- COORDINATE AND SCHEDULE ALL WORK WITH OTHER TRADES AND CONTRACTORS.
- DETERMINE THE EXACT LOCATION, SIZE, MATERIAL AND ELEVATION OF ALL EXISTING UTILITIES PRIOR TO COMMENCING CONSTRUCTION. PROTECT AND ASSUME RESPONSIBILITY FOR ALL EXISTING UTILITIES WHETHER OR NOT SHOWN ON THIS DRAWING.
- ALL ELEVATIONS ARE GEODETIC.

**LEGEND**

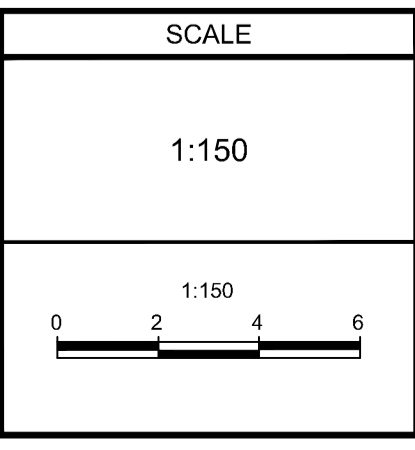
Symbol	REMOVALS
+	EXISTING CONCRETE CURB
VALVE	EXISTING VALVE & VALVE BOX
SP	EXISTING SERVICE POST
HYD	EXISTING HYDRANT
CBMH	EXISTING CATCHBASIN
CB	EXISTING CATCHBASIN/MH
EX UP	EXISTING UTILITY POLE
○	EXISTING GUY WIRES
○	EXISTING TREES/VEGETATION



**NOTE:**  
THE POSITION OF ALL POLE LINES, CONDUITS, WATERMANS, SEWERS AND OTHER UNDERGROUND AND OVERGROUND UTILITIES AND STRUCTURES IS NOT NECESSARILY SHOWN ON THE CONTRACT DRAWINGS, AND WHERE SHOWN, THE ACCURACY OF THE POSITION OF SUCH UTILITIES AND STRUCTURES IS NOT GUARANTEED. BEFORE STARTING WORK, DETERMINE THE EXACT LOCATION OF ALL SUCH UTILITIES AND STRUCTURES AND ASSUME ALL LIABILITY FOR DAMAGE TO THEM.

**OWNER INFORMATION**  
JADCO Group  
345 Boulevard Samson  
Laval, QC H7X 2Z7  
CONTACT: ANDRÉ DOUDAK  
Tel: (613) 791-1970  
EMAIL: adoudak@jadcogroup.com

No.	REVISION	DATE	BY
1.	ISSUED FOR SPC APPLICATION	AUG 30/22	FST



DESIGN	CV
CHECKED	FST
DRAWN	CV
CHECKED	FST
APPROVED	FST



**NOVATECH**  
Engineers, Planners & Landscape Architects  
Suite 200, 240 Michael Cowpland Drive  
Ottawa, Ontario, Canada K2M 1P6  
Telephone: (613) 254-9643  
Facsimile: (613) 254-5867  
Website: www.novatech-eng.com

<b>LOCATION</b> CITY OF OTTAWA 150 LAURIER AVENUE WEST	
<b>DRAWING NAME</b> EXISTING CONDITIONS AND REMOVALS PLAN	
PROJECT No.	122133
REV	REV # 1
DRAWING No.	122133-REM
PLAN #	

M:\2022\122133\CAD\Civil\122133-REM.dwg, 122133-REM.dwg, Aug 30, 2022, 2:54pm, cadswr

D07-12-22-