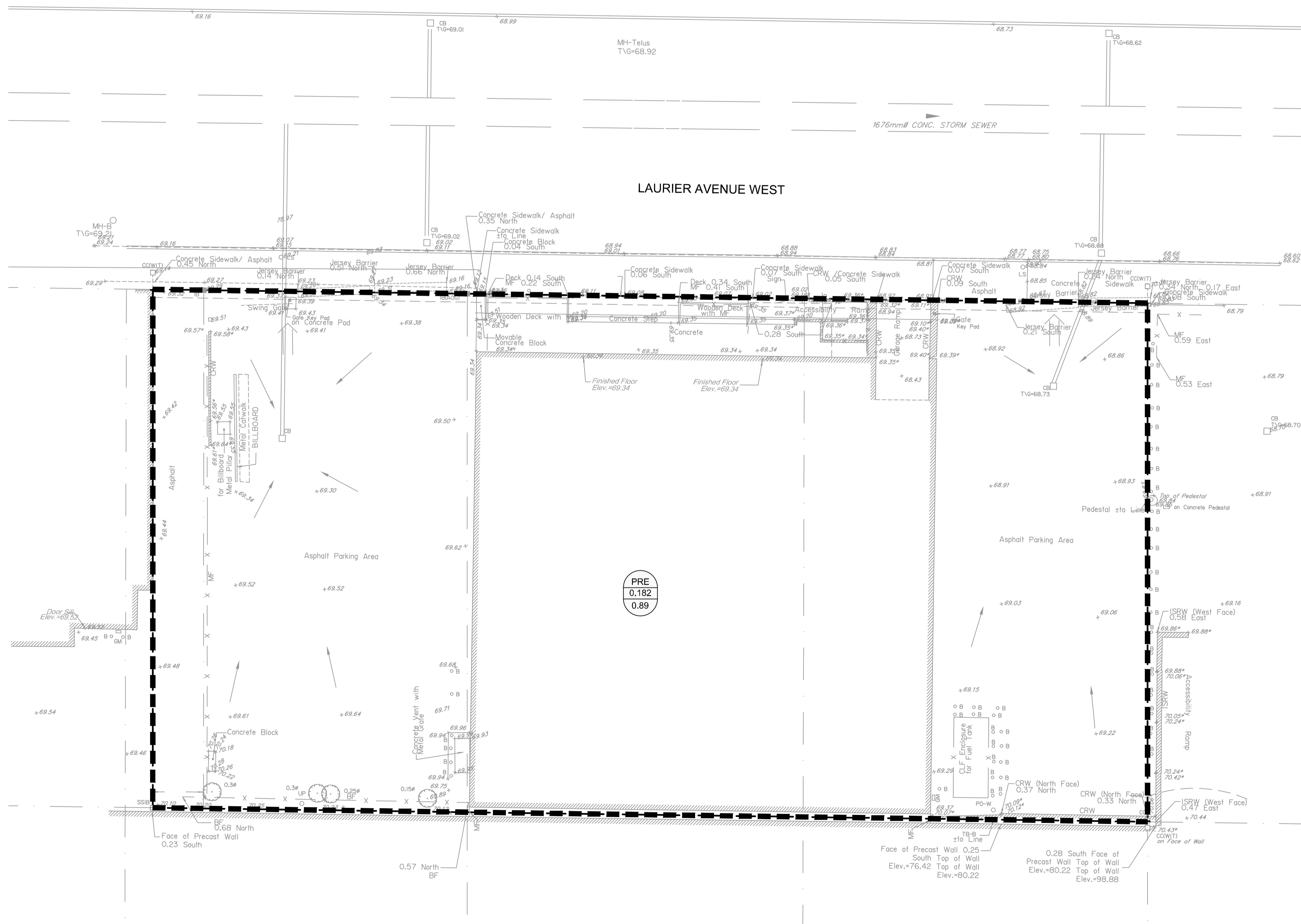


**GENERAL NOTES:**

- COORDINATE AND SCHEDULE ALL WORK WITH OTHER TRADES AND CONTRACTORS.
- DETERMINE THE EXACT LOCATION, SIZE, MATERIAL AND ELEVATION OF ALL EXISTING UTILITIES PRIOR TO COMMENCING CONSTRUCTION. PROTECT AND ASSUME RESPONSIBILITY FOR ALL EXISTING UTILITIES WHETHER OR NOT SHOWN ON THIS DRAWING.
- ALL ELEVATIONS ARE GEODETIC.
- REFER TO GEOTECHNICAL INVESTIGATION REPORT (PG65195-1, REVISION 2, DATED SEPTEMBER 7, 2023), PREPARED BY PATERSON GROUP INC., FOR SUBSURFACE CONDITIONS, CONSTRUCTION RECOMMENDATIONS, AND GEOTECHNICAL INSPECTION REQUIREMENTS. THE GEOTECHNICAL CONSULTANT IS TO REVIEW ON-SITE CONDITIONS AFTER EXCAVATION PRIOR TO PLACEMENT OF THE GRANULAR MATERIAL.
- REFER TO THE DEVELOPMENT SERVICING STUDY AND STORMWATER MANAGEMENT REPORT (R-2022-124) PREPARED BY NOVATECH.

**LEGEND**

- DRAINAGE AREA LIMITS
- PRE-DEVELOPMENT AREA ID
- PRE-DEVELOPMENT DRAINAGE AREA (ha)
- 1.5 YEAR WEIGHTED RUNOFF COEFFICIENT
- EXISTING CONCRETE CURB
- EXISTING VALVE & VALVE BOX
- EXISTING SERVICE POST
- EXISTING HYDRANT
- EXISTING CATCHBASIN
- EXISTING CATCHBASIN MH
- EXISTING UTILITY POLE
- EXISTING GUY WIRES
- EXISTING DRAINAGE DIRECTION ARROWS
- EXISTING OVERLAND FLOW



**ANDREW MCCREIGHT**  
**MANAGER, DEVELOPMENT REVIEW CENTRAL**  
**PLANNING, REAL ESTATE & ECONOMIC DEVELOPMENT**  
**DEPARTMENT, CITY OF OTTAWA**

**APPROVED**  
 By Andrew McCreight at 12:07 pm, Apr 10, 2024

**NOTE:**  
 THE POSITION OF ALL POLE LINES, CONDUITS, WATERMAINS, SEWERS AND OTHER UNDERGROUND AND OVERGROUND UTILITIES AND STRUCTURES IS NOT NECESSARILY SHOWN ON THE CONTRACT DRAWINGS, AND WHERE SHOWN, THE ACCURACY OF THE POSITION OF SUCH UTILITIES AND STRUCTURES IS NOT GUARANTEED. BEFORE STARTING WORK, DETERMINE THE EXACT LOCATION OF ALL SUCH UTILITIES AND STRUCTURES AND ASSUME ALL LIABILITY FOR DAMAGE TO THEM.

**OWNER INFORMATION**  
 JADCO Group  
 345 Boulevard Samson  
 Laval, QC H7X 2Z7

**CONTACT: ANDRÉ DOUDAK**  
 Tel: (613) 791-1970  
 EMAIL: adoudak@jadcogroup.com

No.	REVISION	DATE	BY
3.	RE-ISSUED FOR CITY APPROVAL	OCT 2023	FST
2.	REVISED AS PER CITY COMMENTS	JUN 5/23	FST
1.	ISSUED FOR SPC APPLICATION	AUG 30/22	FST

SCALE	DESIGN
1:150 	CHECKED CV
	CHECKED FST
	DRAWN CV
	CHECKED FST
	APPROVED FST

**FOR REVIEW ONLY**

**NOVATECH**  
 Engineers, Planners & Landscape Architects  
 Suite 200, 240 Michael Cowpland Drive  
 Ottawa, Ontario, Canada K2M 1P6

Telephone (613) 254-9643  
 Facsimile (613) 254-5867  
 Website www.novatech-eng.com

<b>LOCATION</b> CITY OF OTTAWA 150 LAURIER AVENUE WEST	
<b>DRAWING NAME</b> PRE-DEVELOPMENT STORM DRAINAGE PLAN	
PROJECT No. 122133	REV # 3
DRAWING No. 122133-SWM1	
PLAN #18833	

M:\2023\122133\CAD\Civil\122133-SWM.dwg, SWM1, Oct 19, 2023, 8:30am, chesler

D07-12-22-0128