



STANDARD PRODUCTS INC.

Lighting Calculation study

2233 Rue de l'Aviation, Dorval, QC H9P 2X6 ,CANADA
tel.: 1-866-280-2332, 514-739-9984

Project name : Blair and Montreal Road Ottawa Ontario v4

Date:7/7/2023

Prepared for: Jonathan Perlis

AGi32® Version 20.11.7

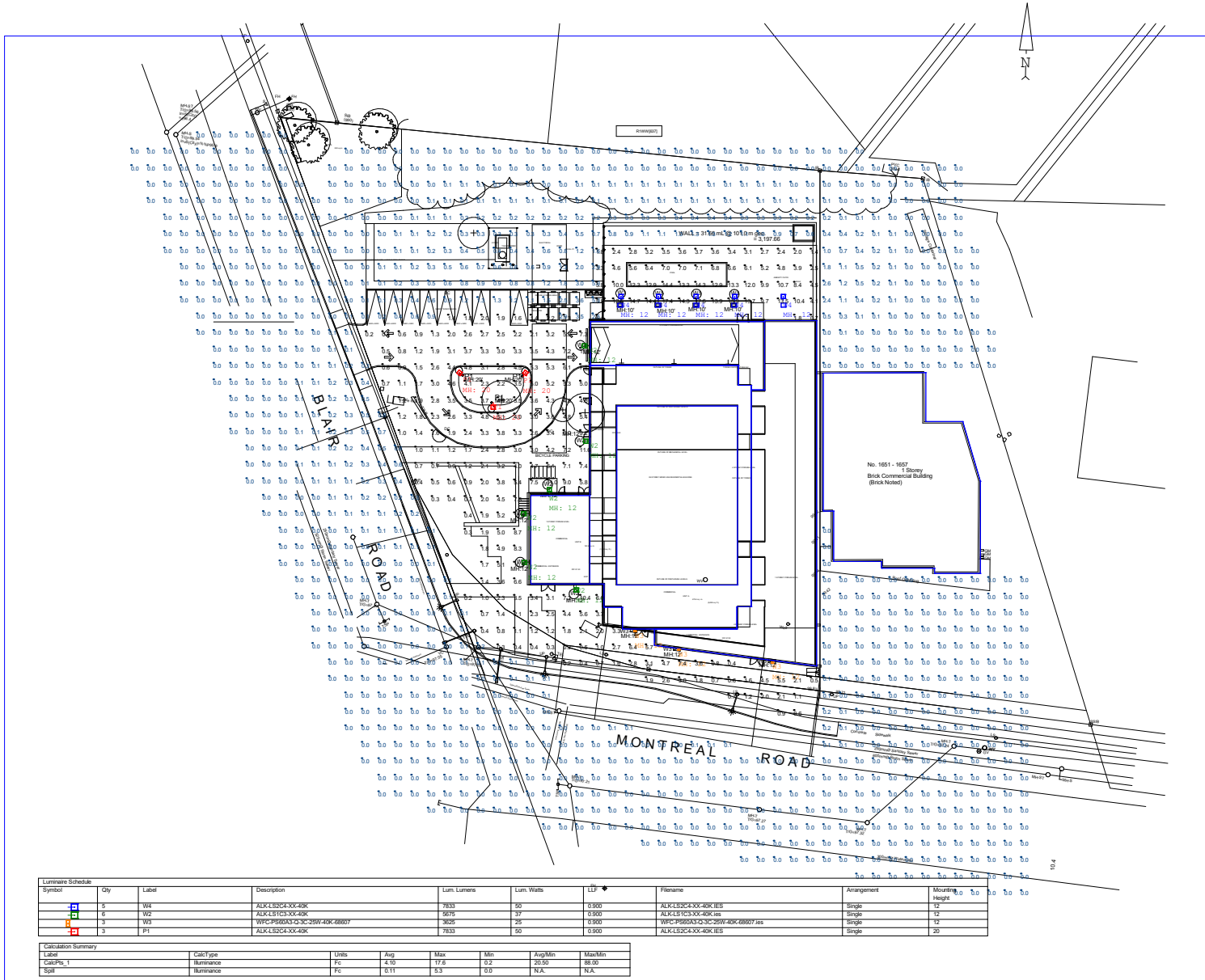
Filename: Blair and Montreal Road Ottawa Ontario v4.AGI

Total Time (Hrs.): 5.3

By : Anne Côté

Page 1 of 11

DISCLAIMER: Calculations have been performed according to IESNA & CIE standards and goodpractice. Some differences between measured values and calculated results may occur due to tolerances in calculation methods, testing procedures, component performance, measurement techniques and field conditions such as voltage and temperature variations. Input data used to generate the attached calculations such as room dimensions, reflectances, furniture and architectural elements significantly affect the lightingcalculations. If the real environment conditions do not match the input data, differences will occur between measured values and calculated values.



| Luminaire Schedule Symbol | Qty | Label | Description | Lum. Lumens | Lum. Watts | LED | Filename | Arrangement | Mounting Height |
|---------------------------|-----|-------|----------------------------|-------------|------------|-------|--------------------------------|-------------|-----------------|
| W1 | 5 | W1 | ALIC152CXX-40K-40K | 7933 | 50 | 0.900 | ALIC152CXX-40K-IES | Single | 12' |
| W2 | 6 | W2 | ALIC151CXX-40K-40K | 5619 | 37 | 0.900 | ALIC151CXX-40K-IES | Single | 12' |
| W3 | 3 | W3 | WPC1P80X4-3C-25W-40K-88007 | 3625 | 25 | 0.900 | WPC1P80X4-3C-25W-40K-88007-IES | Single | 12' |
| W4 | 3 | W4 | ALIC152CXX-40K-40K | 7933 | 50 | 0.900 | ALIC152CXX-40K-IES | Single | 20' |

| Calculation Summary | | CalcType | Units | Avg | Max | Min | Avg/Min | Max/Min |
|---------------------|----------|-------------|-------|------|------|-----|---------|---------|
| Label | CalcPs_1 | Footcandle | FC | 4.10 | 17.6 | 0.2 | 20.50 | 88.00 |
| Spot | | Illuminance | FC | 5.11 | 2.3 | 0.0 | N/A | N/A |

2233 Rue de l'Aviation, Dorval, QC H9P 2X6 ,CANADA
tel.: 1-866-280-2332, 514-739-9984

Project name : Blair and Montreal Road Ottawa Ontario v4

Prepared for: Jonathan Perlis

Filename: Blair and Montreal Road Ottawa Ontario v4.AGI

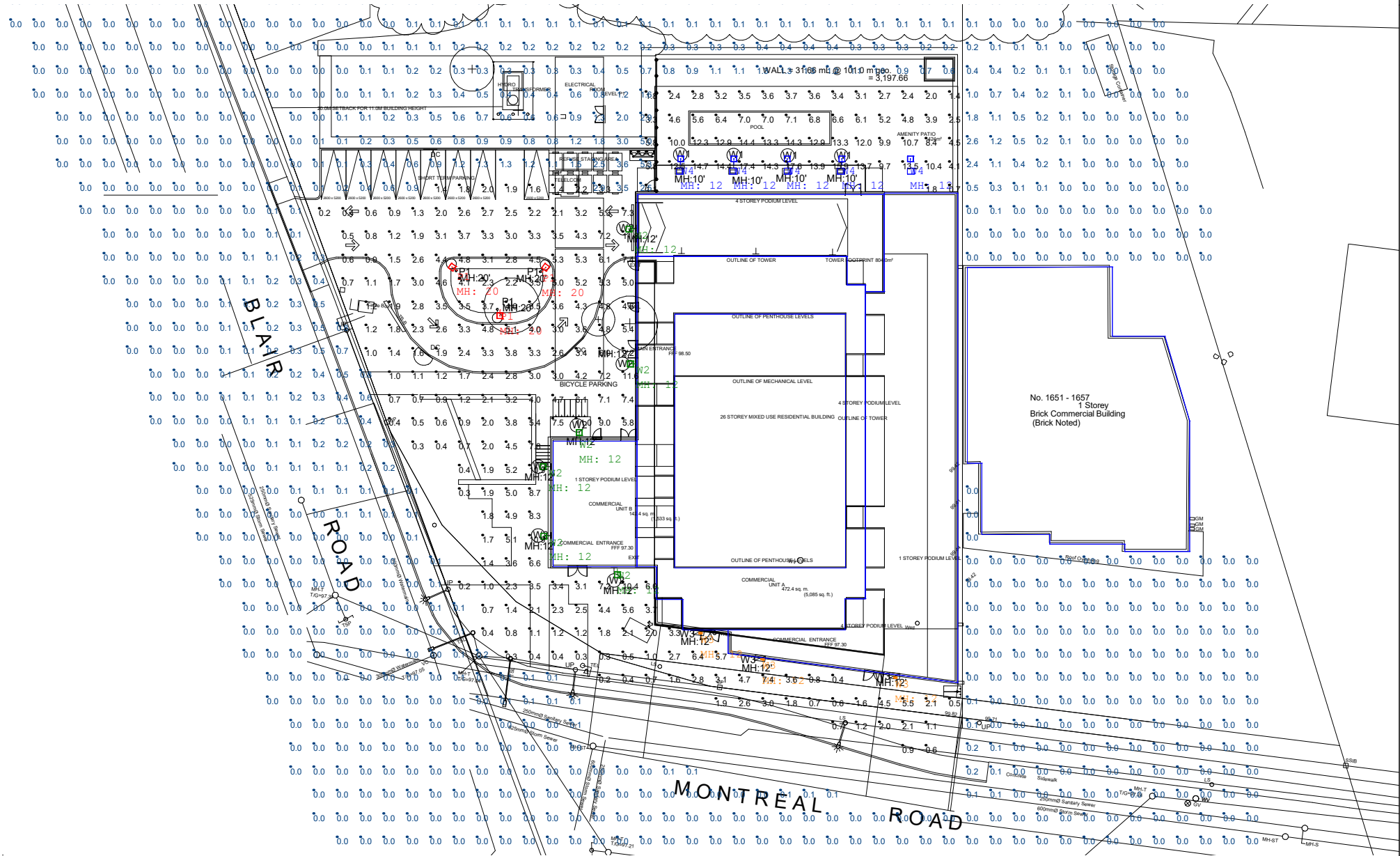
By : Anne Côté

Date:7/7/2023

AGi32® Version 20.11.7

Total Time (Hrs.): 5.3

DISCLAIMER: Calculations have been performed according to IESNA & CIE standards and goodpractice. Some differences between measured values and calculated results may occur due to tolerances in calculation methods, testing procedures, component performance, measurement techniques and field conditions such as voltage and temperature variations. Input data used to generate the attached calculations such as room dimensions, reflectances, reflectances, furniture and architectural elements significantly affect the lighting calculations. If the real environment conditions do not match the input data, differences will occur between measured values and calculated values.



2233 Rue de l'Aviation, Dorval, QC H9P 2X6 ,CANADA
 tel.: 1-866-280-2332, 514-739-9984

DISCLAIMER: Calculations have been performed according to IESNA & CIE standards and good practice. Some differences between measured values and calculated results may occur due to tolerances in calculation methods, testing procedures, component performance, measurement techniques and field conditions such as voltage and temperature variations. Input data used to generate the attached calculations such as room dimensions, reflectances, furniture and architectural elements significantly affect the lighting calculations. If the real environment conditions do not match the input data, differences will occur between measured values and calculated values.

Project name : Blair and Montreal Road Ottawa Ontario v4

Prepared for: Jonathan Perlis

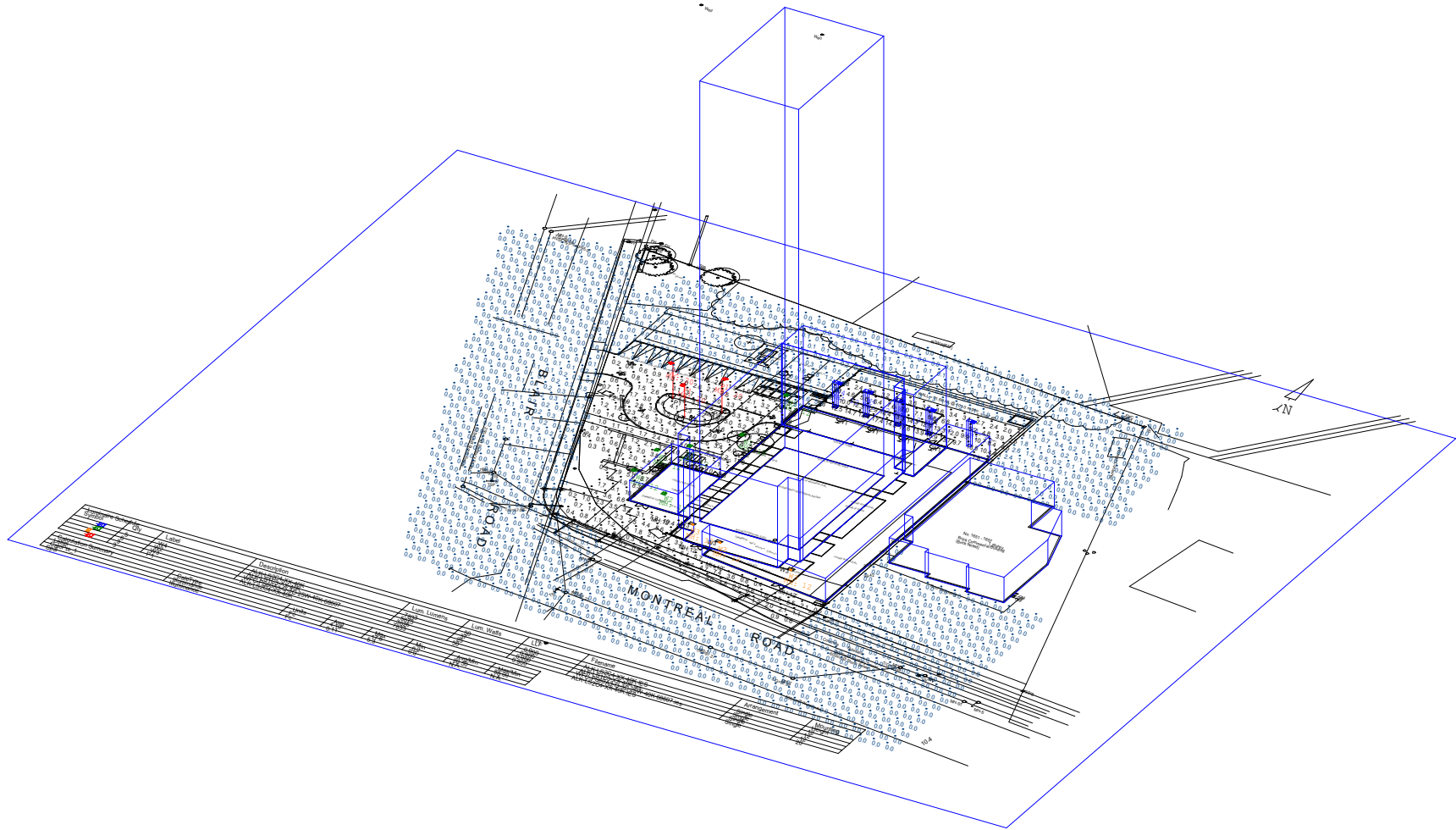
Filename: Blair and Montreal Road Ottawa Ontario v4.AGI

By : Anne Côté

Date: 7/7/2023

AGI32® Version 20.11.7

Total Time (Hrs.): 5.3



2233 Rue de l'Aviation, Dorval, QC H9P 2X6 ,CANADA
 tel.: 1-866-280-2332, 514-739-9984

Project name : Blair and Montreal Road Ottawa Ontario v4

Date: 7/7/2023

Prepared for: Jonathan Perlis

AGi32® Version 20.11.7

Filename: Blair and Montreal Road Ottawa Ontario v4.AGI

Total Time (Hrs.): 5.3

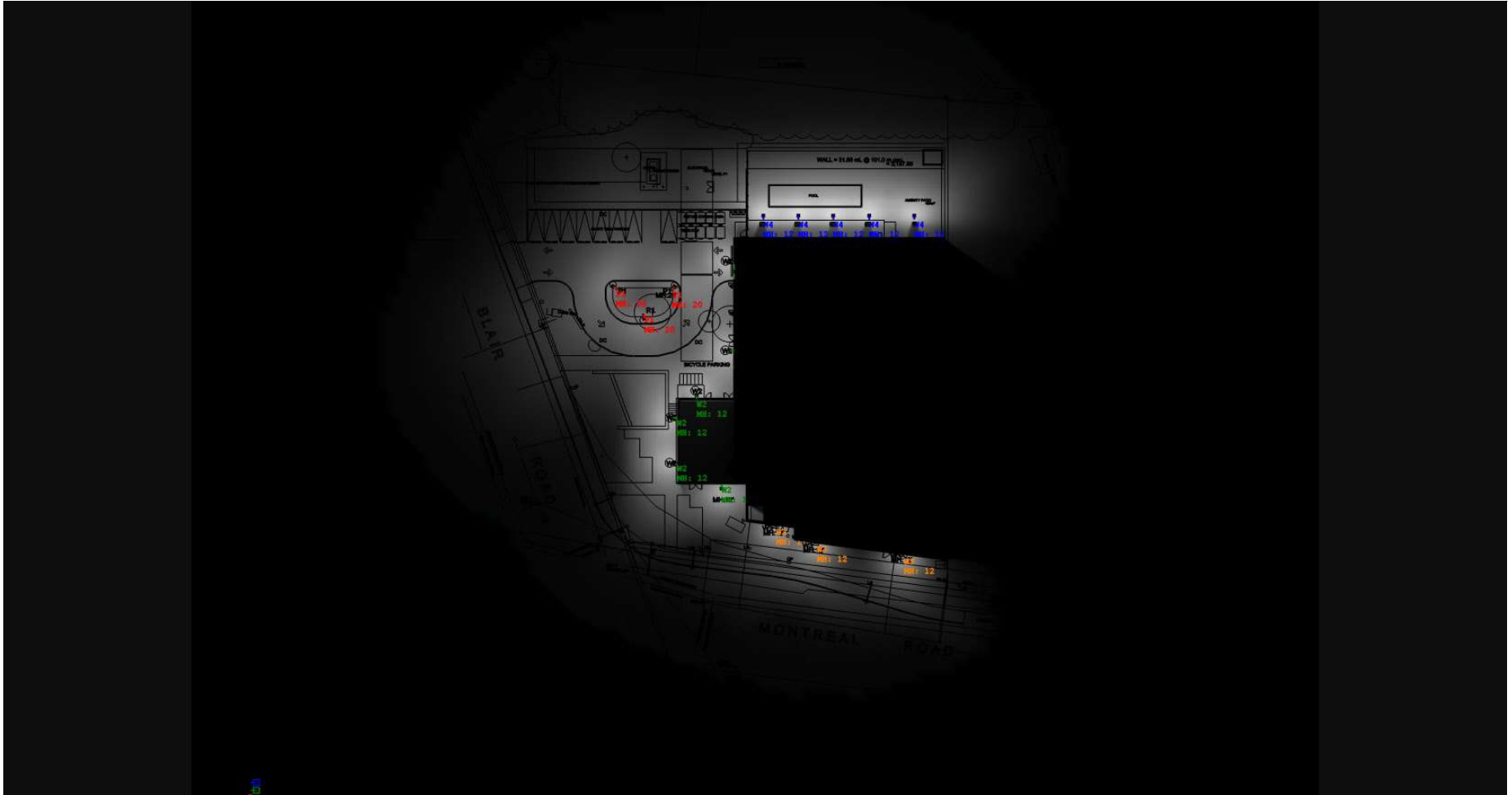
By : Anne Côté

DISCLAIMER: Calculations have been performed according to IESNA & CIE standards and good practice. Some differences between measured values and calculated results may occur due to tolerances in calculation methods, testing procedures, component performance, measurement techniques and field conditions such as voltage and temperature variations. Input data used to generate the attached calculations such as room dimensions, reflectances, furniture and architectural elements significantly affect the lighting calculations. If the real environment conditions do not match the input data, differences will occur between measured values and calculated values.

Results summary

| Luminaire Schedule | | | | | | | | |
|--------------------|-----|-------|-------------------------------|------------|-------------|-------|-----------------------------------|-------------|
| Symbol | Qty | Label | Description | Lum. Watts | Lum. Lumens | LLF | Filename | Arrangement |
| | 5 | W4 | ALK-LS2C4-XX-40K | 50 | 7833 | 0.900 | ALK-LS2C4-XX-40K.IES | Single |
| | 6 | W2 | ALK-LS1C3-XX-40K | 37 | 5675 | 0.900 | ALK-LS1C3-XX-40K.ies | Single |
| | 3 | W3 | WFC-PS60A3-Q-3C-25W-40K-68607 | 25 | 3625 | 0.900 | WFC-PS60A3-Q-3C-25W-40K-68607.ies | Single |
| | 3 | P1 | ALK-LS2C4-XX-40K | 50 | 7833 | 0.900 | ALK-LS2C4-XX-40K.IES | Single |

| Calculation Summary | | | | | | | |
|---------------------|-------------|-------|------|------|-----|---------|---------|
| Label | CalcType | Units | Avg | Max | Min | Avg/Min | Max/Min |
| CalcPts_1 | Illuminance | Fc | 4.10 | 17.6 | 0.2 | 20.50 | 88.00 |
| Spill | Illuminance | Fc | 0.11 | 5.3 | 0.0 | N.A. | N.A. |



2233 Rue de l'Aviation, Dorval, QC H9P 2X6 ,CANADA
 tel.: 1-866-280-2332, 514-739-9984

DISCLAIMER: Calculations have been performed according to IESNA & CIE standards and goodpractice. Some differences between measured values and calculated results may occur due to tolerances in calculation methods, testing procedures, component performance, measurement techniques and field conditions such as voltage and temperature variations. Input data used to generate the attached calculations such as room dimensions, reflectances, furniture and architectural elements significantly affect the lightingcalculations. If the real environment conditions do not match the input data, differences will occur between measured values and calculated values.

Project name : Blair and Montreal Road Ottawa Ontario v4

Prepared for: Jonathan Perlis

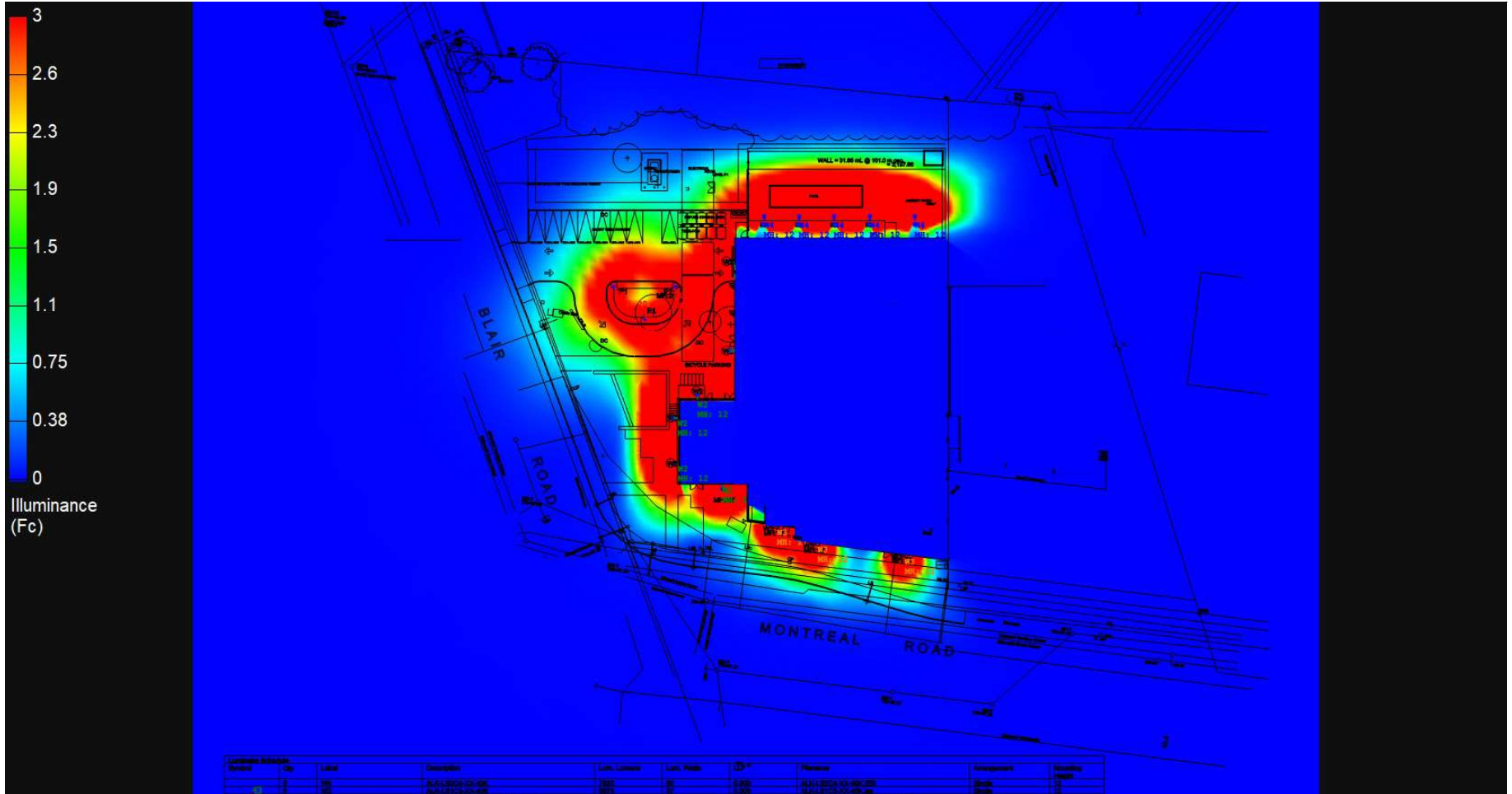
Filename: Blair and Montreal Road Ottawa Ontario v4.AGI

By : Anne Côté

Date:7/7/2023

AGi32® Version 20.11.7

Total Time (Hrs.): 5.3



2233 Rue de l'Aviation, Dorval, QC H9P 2X6 ,CANADA
 tel.: 1-866-280-2332, 514-739-9984

Project name : Blair and Montreal Road Ottawa Ontario v4

Date: 7/7/2023

Prepared for: Jonathan Perlis

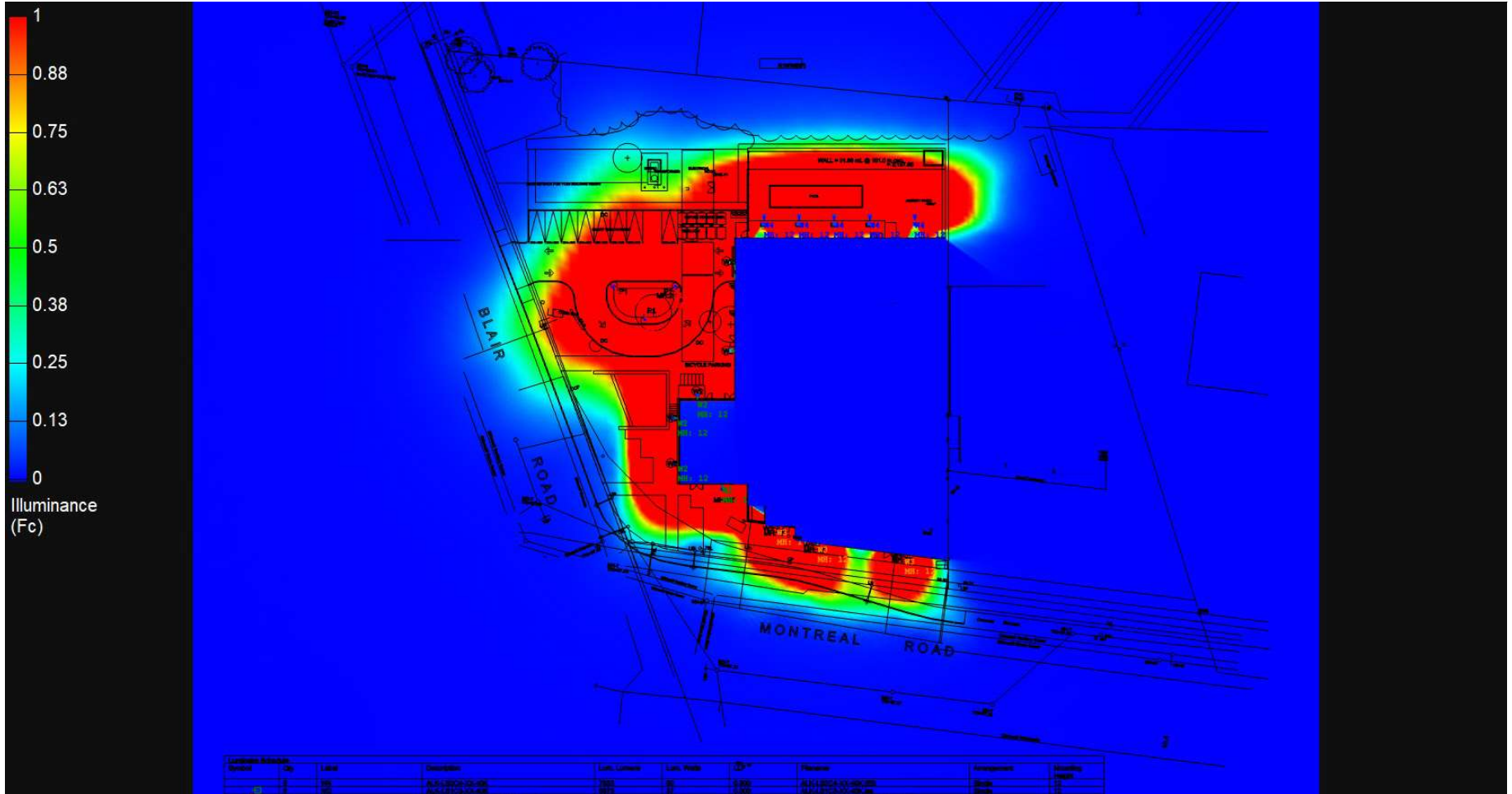
AGi32® Version 20.11.7

DISCLAIMER: Calculations have been performed according to IESNA & CIE standards and good practice. Some differences between measured values and calculated results may occur due to tolerances in calculation methods, testing procedures, component performance, measurement techniques and field conditions such as voltage and temperature variations. Input data used to generate the attached calculations such as room dimensions, reflectances, furniture and architectural elements significantly affect the lighting calculations. If the real environment conditions do not match the input data, differences will occur between measured values and calculated values.

Filename: Blair and Montreal Road Ottawa Ontario v4.AGI

Total Time (Hrs.): 5.3

By : Anne Côté



2233 Rue de l'Aviation, Dorval, QC H9P 2X6 ,CANADA
tel.: 1-866-280-2332, 514-739-9984

Project name : Blair and Montreal Road Ottawa Ontario v4

Date:7/7/2023

Prepared for: Jonathan Perlis

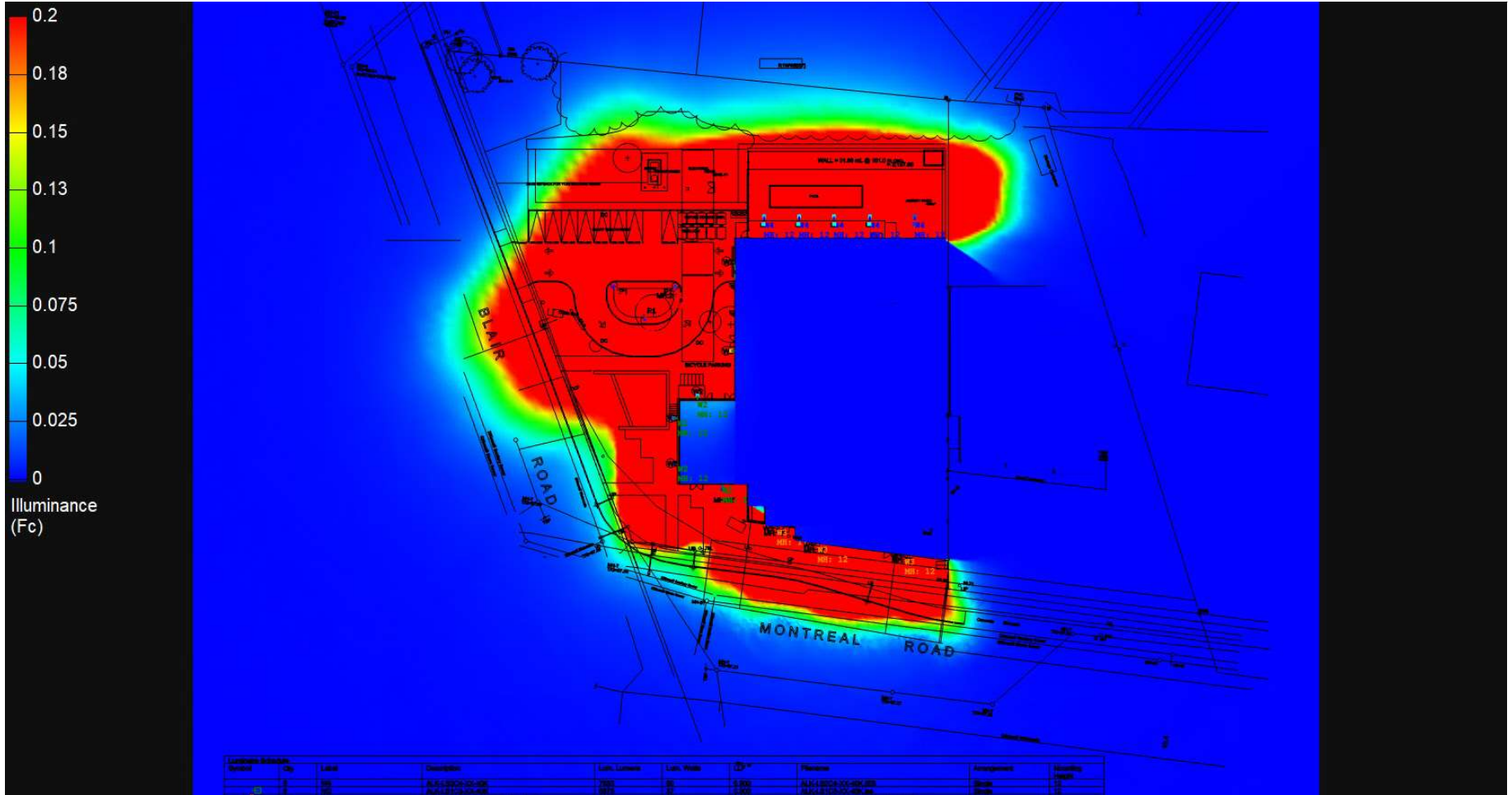
AGi32® Version 20.11.7

Filename: Blair and Montreal Road Ottawa Ontario v4.AGI

Total Time (Hrs.): 5.3

By : Anne Côté

DISCLAIMER: Calculations have been performed according to IESNA & CIE standards and goodpractice. Some differences between measured values and calculated results may occur due to tolerances in calculation methods, testing procedures, component performance, measurement techniques and field conditions such as voltage and temperature variations. Input data used to generate the attached calculations such as room dimensions, reflectances, furniture and architectural elements significantly affect the lighting calculations. If the real environment conditions do not match the input data, differences will occur between measured values and calculated values.



2233 Rue de l'Aviation, Dorval, QC H9P 2X6 ,CANADA
 tel.: 1-866-280-2332, 514-739-9984

Project name : Blair and Montreal Road Ottawa Ontario v4

Date: 7/7/2023

Prepared for: Jonathan Perlis

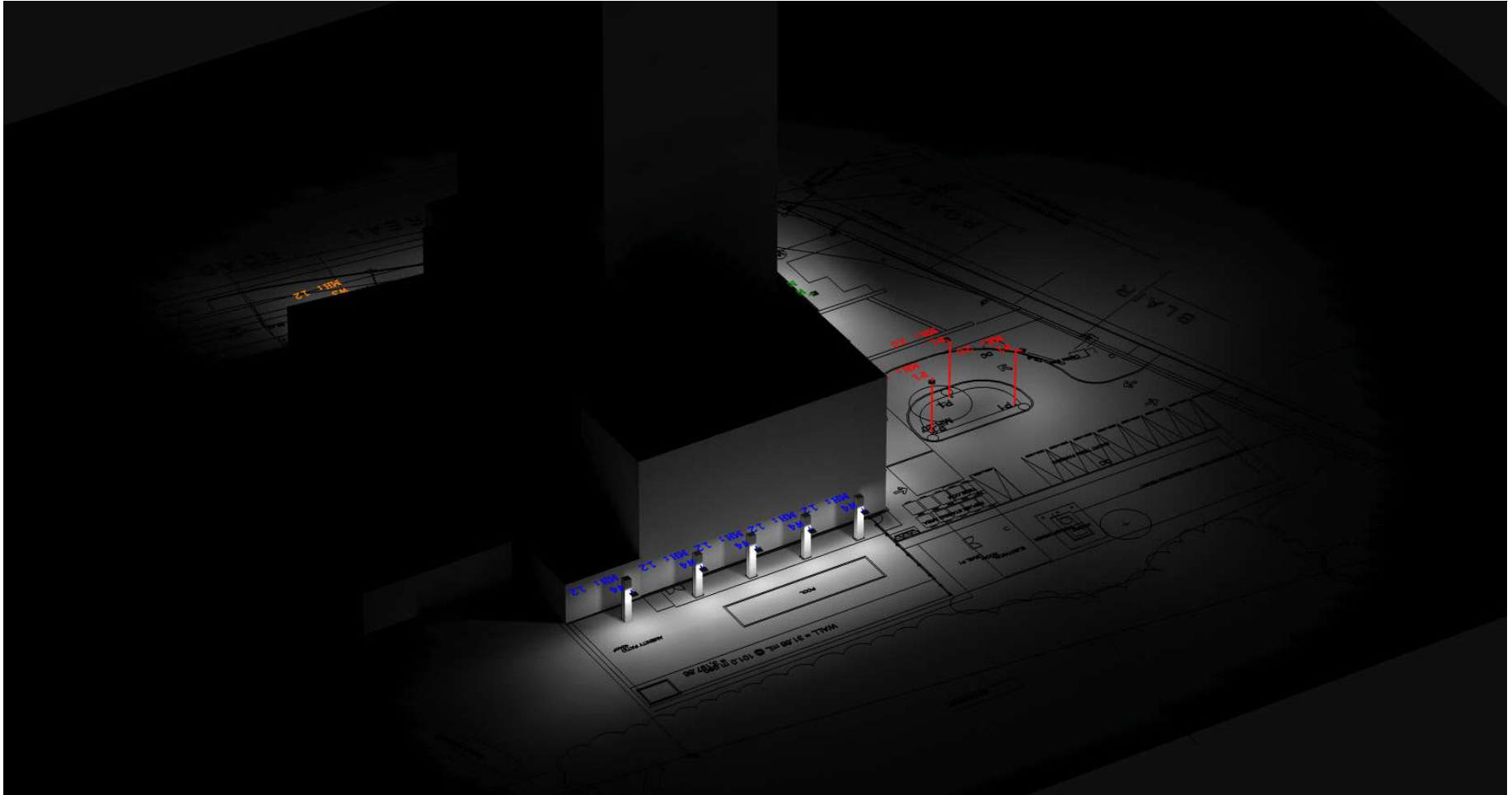
AGi32® Version 20.11.7

Filename: Blair and Montreal Road Ottawa Ontario v4.AGI

Total Time (Hrs.): 5.3

By : Anne Côté

DISCLAIMER: Calculations have been performed according to IESNA & CIE standards and good practice. Some differences between measured values and calculated results may occur due to tolerances in calculation methods, testing procedures, component performance, measurement techniques and field conditions such as voltage and temperature variations. Input data used to generate the attached calculations such as room dimensions, reflectances, furniture and architectural elements significantly affect the lighting calculations. If the real environment conditions do not match the input data, differences will occur between measured values and calculated values.



2233 Rue de l'Aviation, Dorval, QC H9P 2X6 ,CANADA
 tel.: 1-866-280-2332, 514-739-9984

Project name : Blair and Montreal Road Ottawa Ontario v4

Date:7/7/2023

Prepared for: Jonathan Perlis

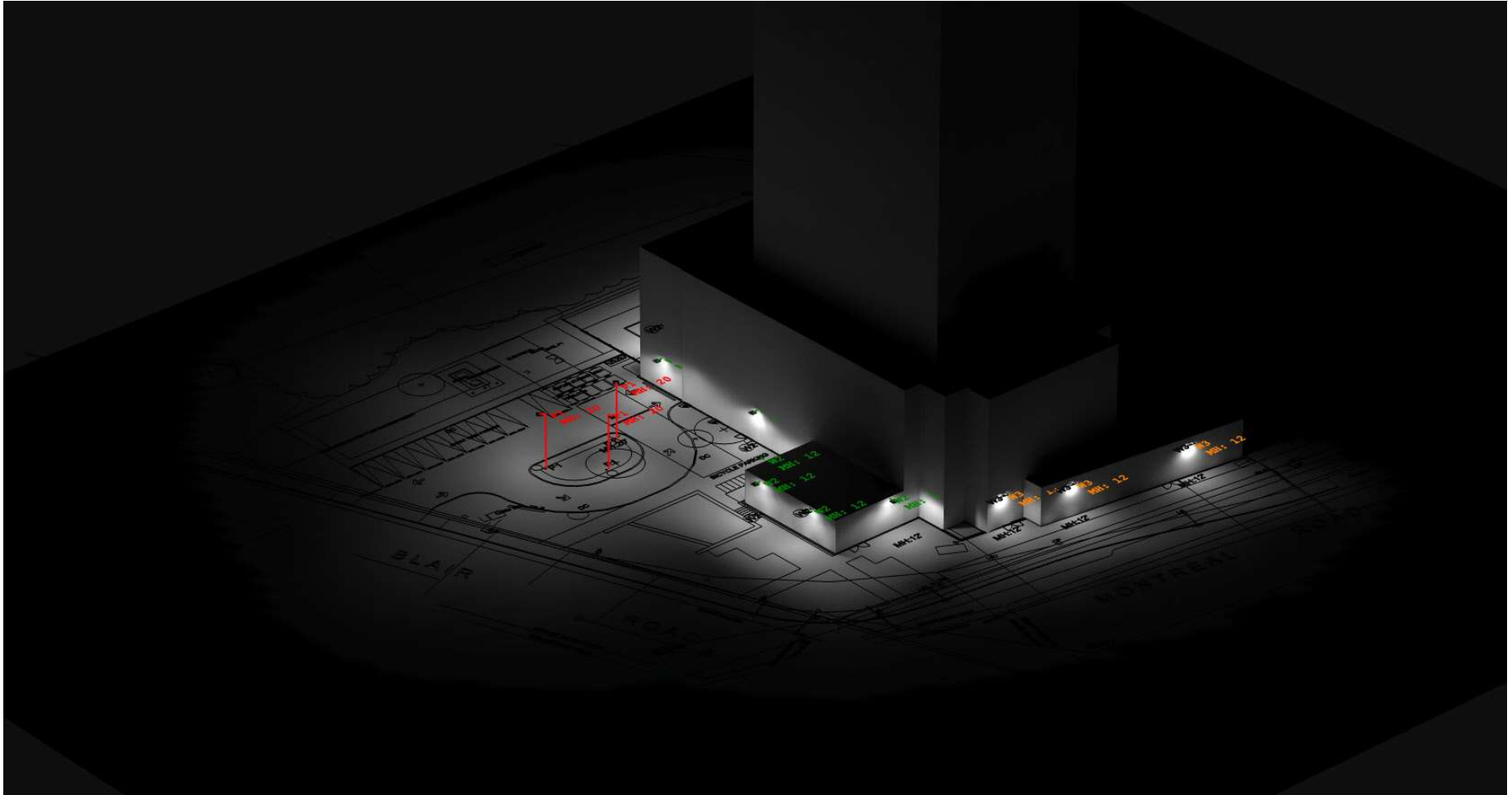
AGi32® Version 20.11.7

Filename: Blair and Montreal Road Ottawa Ontario v4.AGI

Total Time (Hrs.): 5.3

By : Anne Côté

DISCLAIMER: Calculations have been performed according to IESNA & CIE standards and goodpractice. Some differences between measured values and calculated results may occur due to tolerances in calculation methods, testing procedures, component performance, measurement techniques and field conditions such as voltage and temperature variations. Input data used to generate the attached calculations such as room dimensions, reflectances, furniture and architectural elements significantly affect the lightingcalculations. If the real environment conditions do not match the input data, differences will occur between measured values and calculated values.



2233 Rue de l'Aviation, Dorval, QC H9P 2X6 ,CANADA
 tel.: 1-866-280-2332, 514-739-9984

Project name : Blair and Montreal Road Ottawa Ontario v4

Date:7/7/2023

Prepared for: Jonathan Perlis

AGi32® Version 20.11.7

Filename: Blair and Montreal Road Ottawa Ontario v4.AGI

Total Time (Hrs.): 5.3

By : Anne Côté

DISCLAIMER: Calculations have been performed according to IESNA & CIE standards and goodpractice. Some differences between measured values and calculated results may occur due to tolerances in calculation methods, testing procedures, component performance, measurement techniques and field conditions such as voltage and temperature variations. Input data used to generate the attached calculations such as room dimensions, reflectances, furniture and architectural elements significantly affect the lightingcalculations. If the real environment conditions do not match the input data, differences will occur between measured values and calculated values.