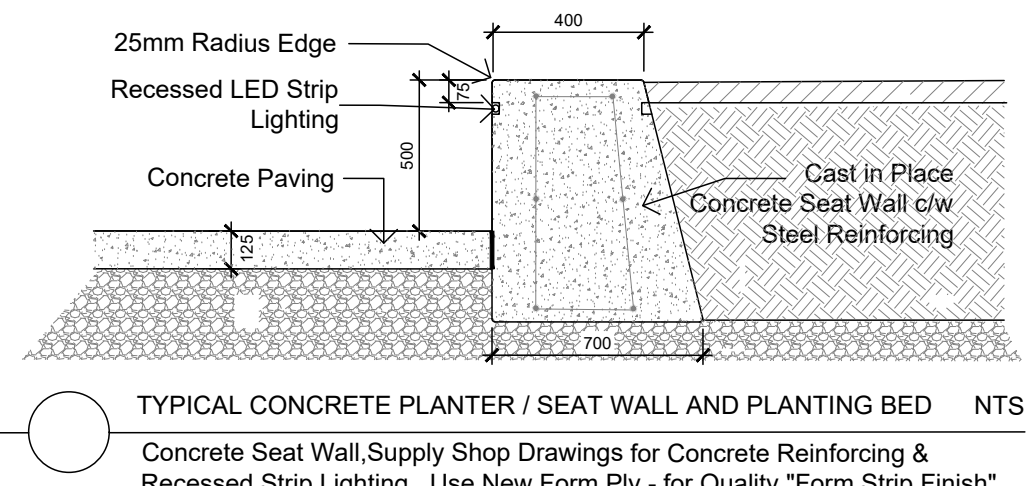
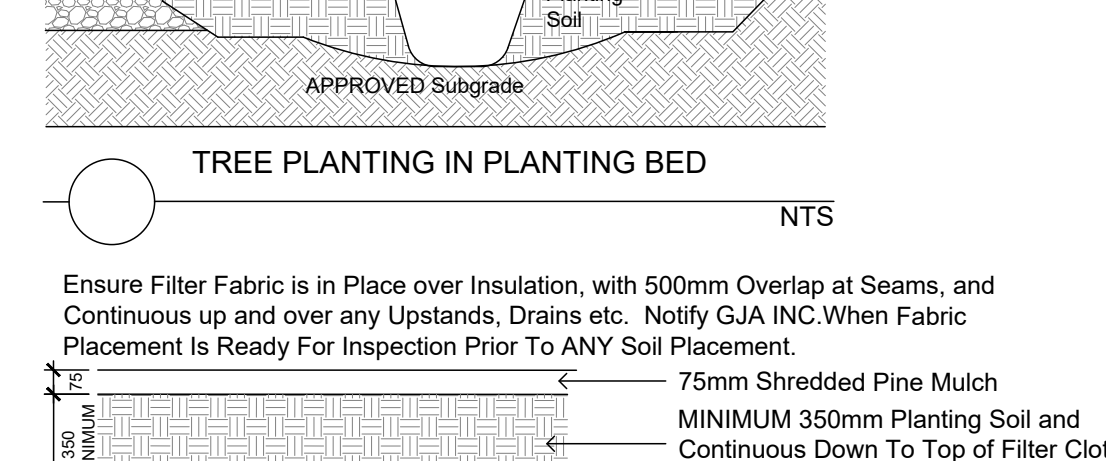
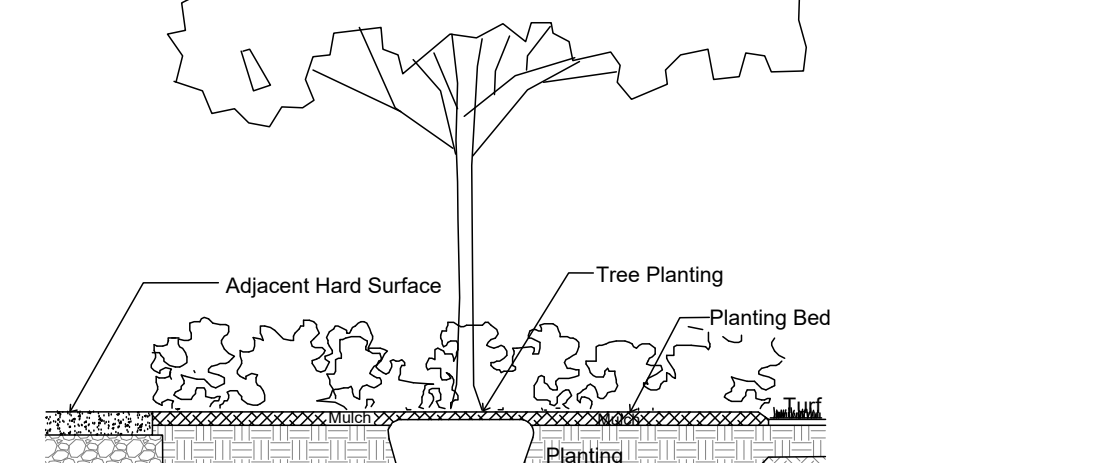
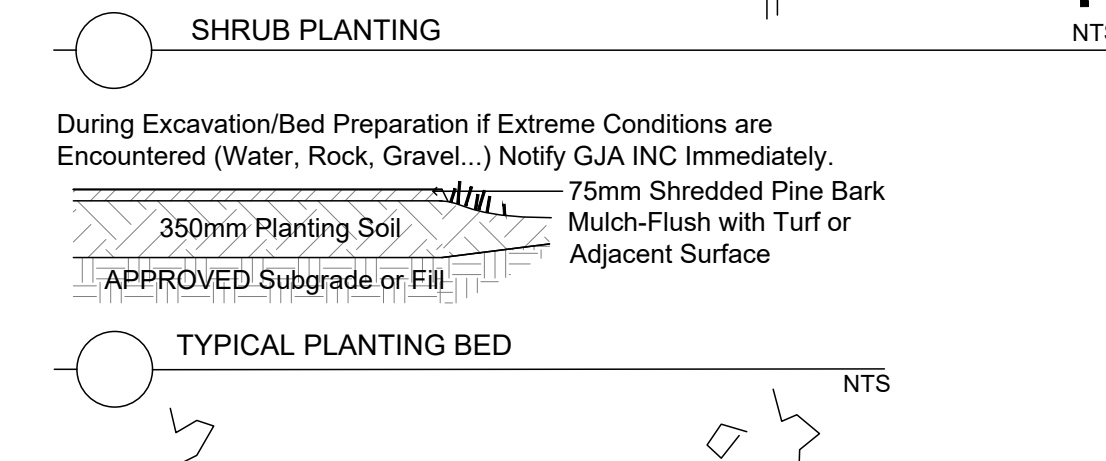
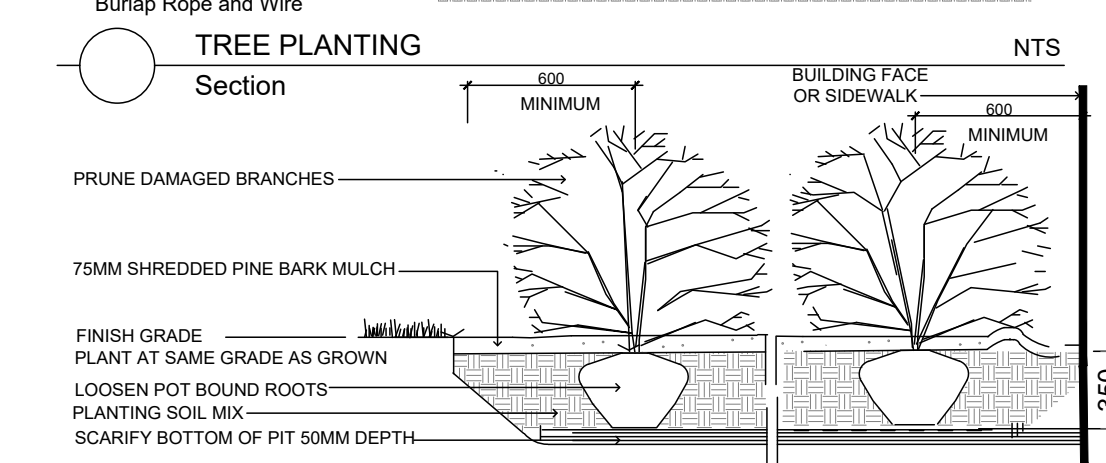
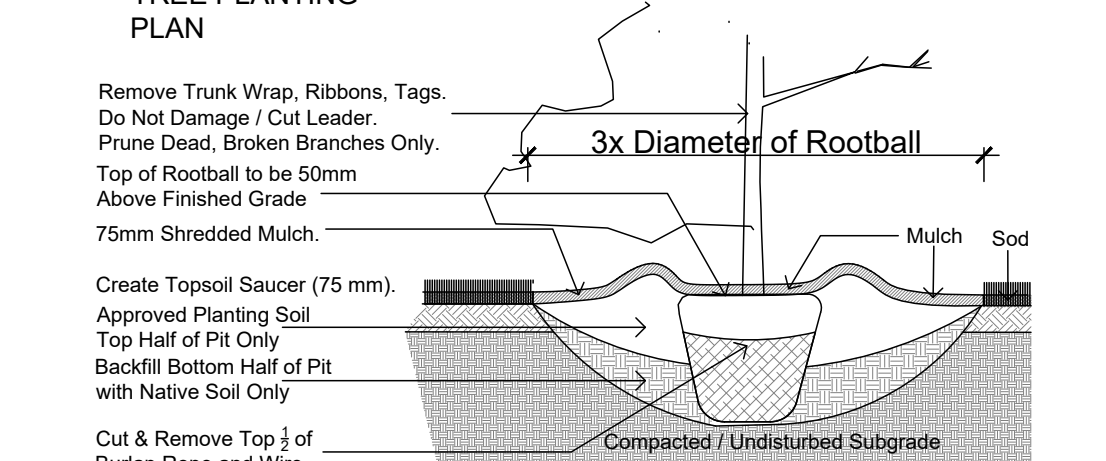
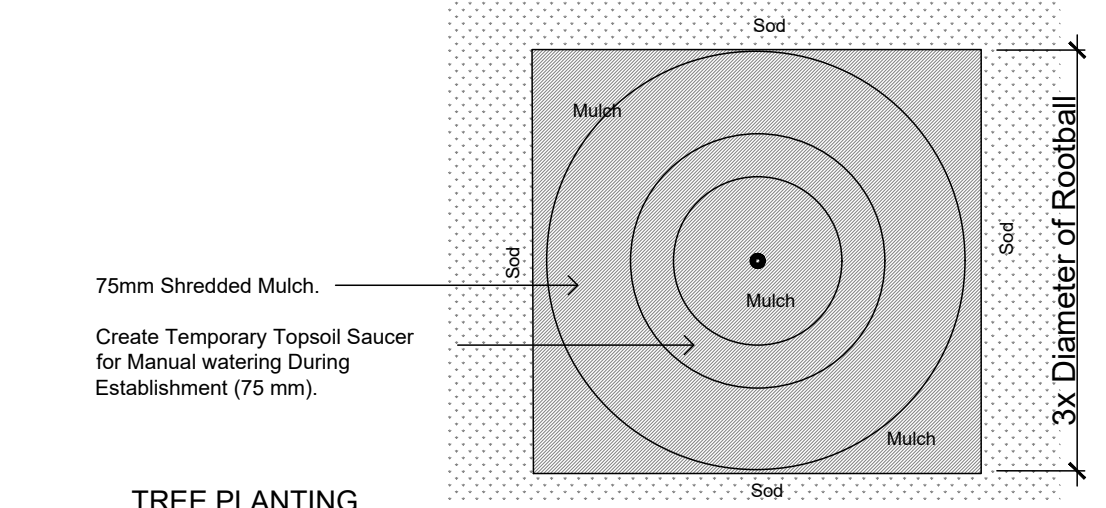


Drawing Remains the Property of/Copyright Reserved by Gino J. Aiello Landscape Architect. Do Not Use or Reproduce Without Approval of Gino J. Aiello.
NOT To Be Used For Construction Unless indicated by Revision: **"FOR LANDSCAPE CONSTRUCTION"**
Contractor is Responsible for Verification of Site Locations of all Utilities. Report any Discrepancies Between Site and Drawing Immediately to Gino J. Aiello. Do NOT Proceed Until Clarified.

TURF AREAS TO BE SOD C/W 150MM DEPTH TOPSOIL ON APPROVED SUBGRADE | SOD TO BE #1 GRADE TURFGRASS NURSERY SOD per NSGA - Fine Fescue/Kentucky Bluegrass Sod | PLANTING MIX TO BE APPROVED BY LANDSCAPE ARCHITECT | PLANT MATERIAL TO MEET CNLA STANDARDS/BE APPROVED BY LANDSCAPE ARCHITECT PRIOR TO PLANTING | ALL MATERIALS & WORK TO BE MAINTAINED UNTIL FINAL ACCEPTANCE, (MOWING TURF, WEEDING BEDS, WATERING TURF & PLANTS) & INCLUDE 1 YEAR WARRANTY FROM DATE OF FINAL ACCEPTANCE | PROVIDE WATERING OF ALL PLANT MATERIAL AS REQUIRED FOR PROPER ESTABLISHMENT, UNTIL END OF WARRANTY PERIOD | REFER TO CIVIL ENGINEER'S DRAWING FOR ELEVATIONS / GRADING |

The Landscape Plan is to be read in conjunction with the grading, servicing, site and survey plan | Bare root material to be planted in season only | All plant material locations to be staked on site by the landscape contractor and checked by the landscape architect prior to planting | All trees to be preserved on or directly adjacent to the site will be protected | Plant material are to be installed a minimum of: 3.0m away from any part of any hydro transformer, 3.0m corridor between a fire hydrant and the curb, a 2.5m radius beside or behind a fire hydrant, 2.0m from any servicing/utility line or structure |



- EXISTING TREES REFER TO TCR BY IFS**
- 1 • TO REMAIN / PROTECT
 - 1 • TO BE REMOVED
- PROTECTION FENCE Beyond CRZ**
- LANDSCAPE LEGEND - PROPOSED**
- DT Deciduous Tree
 - CT Coniferous Tree
 - Planting Bed
 - Shrub Planting Bed
 - Riverwash
 - Stone/Filter Cloth
 - Precast Paving
 - Concrete Paving
 - Concrete Seat Wall
 - Parking Garage Below
 - LS Light Standard Base
 - Fire Hydrant
 - FD Siamese Connection
 - Catch Basin CB/Manhole
- BELONG GRADE SERVICES REFER TO CIVIL /CUP**
- WTR U/G Water Service
 - STM U/G Storm Service
 - SAN U/G Sanitary Service
 - GAS U/G Gas Service
 - U/G TelCo Service
 - U/G Hydro Service
 - O/H Hydro Service

Ensure Filter Fabric is in Place over Insulation, with 500mm Overlap at Seams, and Continuous up and over any Upstands, Drains etc. Notify GJA INC. When Fabric Placement is Ready For Inspection Prior To ANY Soil Placement.

75mm Shredded Pine Mulch
 MINIMUM 350mm Planting Soil and Continuous Down To Top of Filter Cloth
 Filter Fabric/Geotextile
 Insulation as per RT by ARCHITECT
 Drainage Board as per RT by ARCHITECT
 Waterproofing/Protection as per RT by ARCHITECT

Concrete Garage Roof as per RT by ARCHITECT

PLANTING ON INSULATED GARAGE ROOF NTS
 Drainage Board Must Be Provided/Installed Above Waterproofing & Below Insulation
 If/Where Soil Depths Exceed 350mm - use Commercial Screened Topsoil BELOW Planting Soil

TYPICAL CONCRETE PLANTER / SEAT WALL AND PLANTING BED NTS
 Concrete Seat Wall, Supply Shop Drawings for Concrete Reinforcing & Recessed Strip Lighting. Use New Form Ply - for Quality "Form Strip Finish"

TREES 1649 MONTREAL RD.

Code	Qty.	Botanical Name	Common Name	Size	Condition
AC	5	Amelanchier canadensis	Serviceberry	50mm cal	B + B specimen
AG	2	Aesculus glabra	Ohio Buckeye	60mm cal	B + B specimen
AR	3	Acer rubrum	Red Maple	70mm cal	B + B specimen
AS	3	Acer saccharum	Sugar Maple	60mm cal	B + B specimen
BP	5	Betula papyrifera	Paper Birch	60mm cal	B + B specimen
GB	7	Ginkgo biloba	Maidenhair Tree	60mm cal	B + B specimen
QM	3	Quercus macrocarpa	Bur Oak	70mm cal	B + B specimen
QR	3	Quercus rubra	Red Oak	60mm cal	B + B specimen

SHRUBS 1649 MONTREAL RD.

Code	Qty.	Botanical Name	Common Name	Size	Condition
AB	3	Abies balsamea	Balsam Fir	2.0m Ht.	B + B specimen
JV	1	Juniperus virginiana	Eastern Red Cedar	1.5m Ht.	B + B specimen
LL	1	Larix laricina	Eastern Larch / Tamarack	2.25m Ht.	B + B specimen
PG	2	Picea glauca	White Spruce	2.5m Ht.	B + B specimen
PR	1	Pinus resinosa	Red Pine	1.5m Ht.	B + B specimen
PS	5	Pinus strobus	White Pine	1.75m Ht.	B + B specimen

SHRUBS 1649 MONTREAL RD.

Code	Qty.	Botanical Name	Common Name	Size	Condition
HK	575	Hypericum kalmianum	Kalm St. John's Wort	30cm Ht.	Pot
HP	250	Hypericum prolificum	Shrubby St. John's Wort	40cm Ht.	Pot
SB	110	Spiraea bumalda 'Dart's Red'	Dart's Red Spirea	50cm Ht.	Pot

GENERAL CONCRETE NOTES:

ALL CONCRETE FINISHES TO BE APPROVED BY GJA LANDSCAPE ARCHITECT.

SAWCUT and EXPANSION JOINT LAYOUT FOR ALL AREAS TO BE MARKED ON SITE IN RED CHALK, REVIEWED, ADJUSTED AND APPROVED BY GJA LANDSCAPE ARCHITECT PRIOR TO ANY CONCRETE POURING / CUTTING.

TYPE 1
 35 MPa C1 125mm Thick, 6% Air Entrainment 6x6 Wire Mesh, Fibre Exp. Joints at all Hard Edges, Sawcut Control Joints (1" depth) as per plan +2.0m O.C. minimum c/w WOOD FLOAT FINISH - TOOL EDGE FIRST, THEN WIPE OFF TOOL MARKS WHILE APPLYING FINISH

CONCRETE PAVING TYPE 1 NTS
 Provide Shop Drawing for Proposed Expansion and Control Joint Layout for Approval

CONCRETE - FINISH LIGHT BROOM, WOOD FLOAT MAGNESIUM FLOAT:
 ALL CONCRETE FINISHES TO BE APPROVED BY GJA LANDSCAPE ARCHITECT.

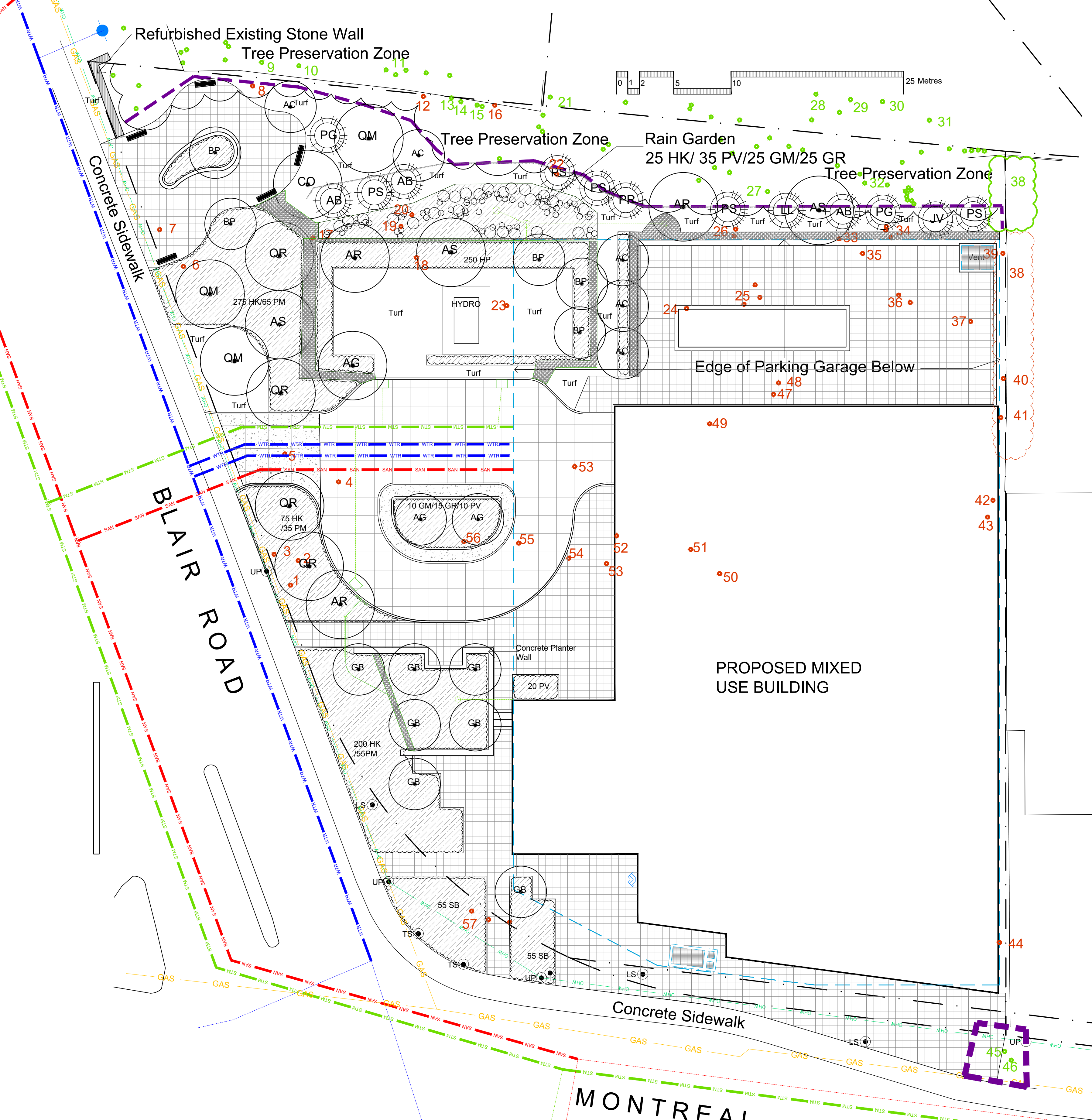
SAWCUT LAYOUT FOR ALL AREAS TO BE MARKED ON SITE IN RED CHALK, REVIEWED, ADJUSTED AND APPROVED BY GJA LANDSCAPE ARCHITECT PRIOR TO ANY CUTTING.

EXPANSION JOINT LAYOUT FOR ALL AREAS TO BE LAID OUT ON SITE, REVIEWED, ADJUSTED AND APPROVED BY GJA LANDSCAPE ARCHITECT PRIOR TO ANY CONCRETE POURING.

PROVIDE COLD JOINT DETAIL at End of Previous Pour/Beginning of New Pour. C/W REBAR DOWELS 500mm O.C.

FINISH: TOOL EDGE FIRST, THEN WIPE OFF TOOL MARKS WHILE APPLYING FINISH.

CONCRETE PAVING NTS
 32mpa, 6% Air Entrainment 6x6 Wire Mesh, Fibre Exp. Joints at all Hard Edges, Sawcut Control Joints (1" depth) +2.0m O.C. as



No.	Revision	Date
3	THIRD SUBMISSION SPC 3	2023 08 28
2	SECOND SUBMISSION SPC 2	APRIL 06 2023
1	FIRST SUBMISSION SPC 1	AUGUST 30 2022
0	FOR REVIEW / COORDINATION	AUGUST 2022

Property Owner: Bertone Montreal Road LP
 1285 Hodge, suite 200, St-Laurent, Quebec, H4N 2B6

Gino J. Aiello | landscape architect
 GJA Inc. 110 Dabury Road Unit #9 | Ottawa Ontario | K2T 0C2

Project: Mixed Use Development Commercial, Residential
 1649 Montreal Road @ Blair Road

Drawing: Landscape Plan
 Date: 2021
 Scale: 1:200
 City of Ottawa
 Dwg - 18876

Sheet Number: L1

D07-12-22-0132