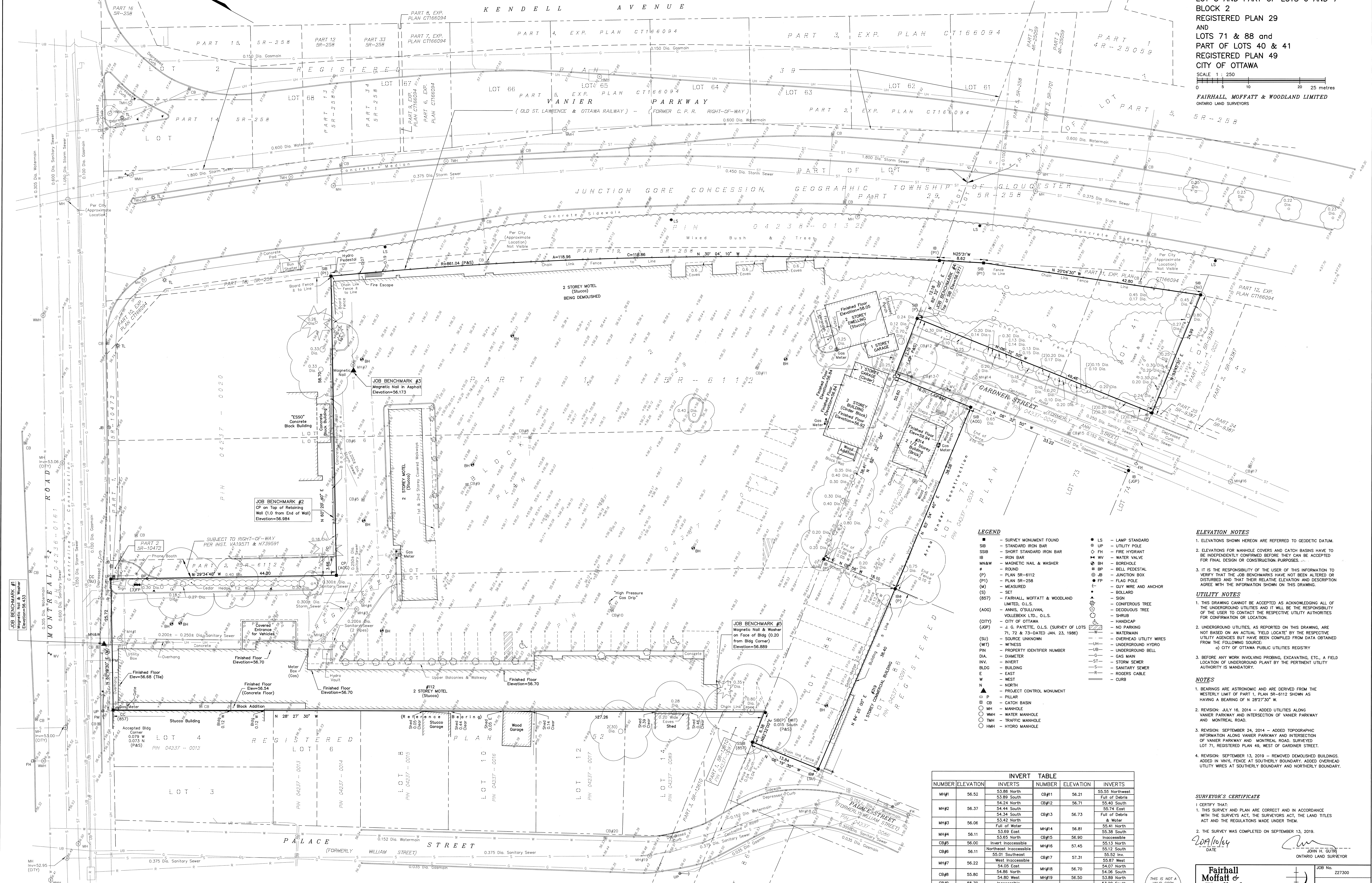


METRIC
DISTANCES AND ELEVATIONS SHOWN ON THIS PLAN ARE IN METRES
AND CAN BE CONVERTED TO FEET BY DIVIDING BY 0.3048

TOPOGRAPHIC SURVEY OF
LOT 5 AND PART OF LOTS 6 AND 7
BLOCK 2
REGISTERED PLAN 29
AND
LOTS 71 & 88 and
PART OF LOTS 40 & 41
REGISTERED PLAN 49
CITY OF OTTAWA
SCALE 1 : 250
FAIRHALL, MOFFATT & WOODLAND LIMITED
ONTARIO LAND SURVEYORS



LEGEND

- SURVEY MONUMENT FOUND
- STANDARD IRON BAR
- SHORT STANDARD IRON BAR
- ▬ IRON BAR
- MN&W MAGNETIC NAIL & WASHER
- ROUND
- (P) PLAN SR-6112
- (P1) PLAN SR-258
- (M) MEASURED
- (S) SET
- (S7) FAIRHALL, MOFFATT & WOODLAND LIMITED, O.L.S.
- (A00) ANIS, O'SULLIVAN, VOLLEBEK LTD., O.L.S.
- (CITY) CITY OF OTTAWA
- (JCP) J. C. PAYETTE, O.L.S. (SURVEY OF LOTS 71, 72 & 73-DATED JAN. 23, 1986)
- (SU) SOURCE UNKNOWN
- (WT) WITNESS
- PN PROPERTY IDENTIFIER NUMBER
- DIA. DIAMETER
- INV. INVERT
- BLDG. BUILDING
- E. EAST
- W. WEST
- N. NORTH
- ▲ PROJECT CONTROL MONUMENT
- PILLAR
- CB CATCH BASIN
- MH MANHOLE
- WMH WATER MANHOLE
- TMM TRAFFIC MANHOLE
- HM HYDRO MANHOLE
- LS LAMP STANDARD
- UP UTILITY POLE
- FH FIRE HYDRANT
- ▬ WV WATER VALVE
- BH BOREHOLE
- BP BELL PEDESTAL
- JB JUNCTION BOX
- FP FLAG POLE
- GW GUY WIRE AND ANCHOR
- BOLLARD
- CN CONIFEROUS TREE
- DT DECIDUOUS TREE
- SHRUB
- HANDBAP
- NP NO PARKING
- W WATERMAIN
- UH OVERHEAD UTILITY WIRES
- UH2 UNDERGROUND HYDRO
- UH3 UNDERGROUND BELL
- G GAS MAIN
- ST STORM SEWER
- SS SANITARY SEWER
- R ROGERS CABLE
- C CURB

ELEVATION NOTES

- ELEVATIONS SHOWN HEREON ARE REFERRED TO GEODETIC DATUM.
- ELEVATIONS FOR MANHOLE COVERS AND CATCH BASINS HAVE TO BE INDIVIDUALLY CONFIRMED BEFORE THEY CAN BE ACCEPTED FOR FINAL DESIGN OR CONSTRUCTION PURPOSES.
- IT IS THE RESPONSIBILITY OF THE USER OF THIS INFORMATION TO VERIFY THAT THE JOB BENCHMARKS HAVE NOT BEEN ALTERED OR DISTURBED AND THAT THEIR RELATIVE ELEVATION AND DESCRIPTION AGREE WITH THE INFORMATION SHOWN ON THIS DRAWING.

UTILITY NOTES

- THIS DRAWING CANNOT BE ACCEPTED AS ACKNOWLEDGING ALL OF THE UNDERGROUND UTILITIES AND IT WILL BE THE RESPONSIBILITY OF THE USER TO CONTACT THE RESPECTIVE UTILITY AUTHORITIES FOR CONFIRMATION OR LOCATION.
- UNDERGROUND UTILITIES, AS REPORTED ON THIS DRAWING, ARE NOT BASED ON AN ACTUAL 'FIELD LOCATE' BY THE RESPECTIVE UTILITY AGENCIES BUT HAVE BEEN COMPILED FROM DATA OBTAINED FROM THE FOLLOWING SOURCE:
 - a) CITY OF OTTAWA PUBLIC UTILITIES REGISTRY
- BEFORE ANY WORK INVOLVING PROBING, EXCAVATING, ETC., A FIELD LOCATION OF UNDERGROUND PLANT BY THE PERTINENT UTILITY AUTHORITY IS MANDATORY.

NOTES

- BEARINGS ARE ASTROMERIC AND ARE DERIVED FROM THE WESTERLY LIMIT OF PART 1, PLAN SR-6112 SHOWN AS HAVING A BEARING OF N 28°27'30" W.
- REVISION: JULY 16, 2014 - ADDED UTILITIES ALONG VANIER PARKWAY AND INTERSECTION OF VANIER PARKWAY AND MONTREAL ROAD.
- REVISION: SEPTEMBER 24, 2014 - ADDED TOPOGRAPHIC INFORMATION ALONG VANIER PARKWAY AND INTERSECTION OF VANIER PARKWAY AND MONTREAL ROAD, SURVEYED LOT 71, REGISTERED PLAN 49, WEST OF GARDNER STREET.
- REVISION: SEPTEMBER 13, 2019 - REMOVED DEMOLISHED BUILDINGS. ADDED IN VINYL FENCE AT SOUTHERLY BOUNDARY. ADDED OVERHEAD UTILITY WIRES AT SOUTHERLY BOUNDARY AND NORTHERLY BOUNDARY.

INVERT TABLE						
NUMBER	ELEVATION	INVERTS	NUMBER	ELEVATION	INVERTS	
MH#1	56.52	53.86 North	CB#11	56.21	55.55 Northwest	
		53.89 South		56.71	Full of Debris	
		54.24 North			55.40 South	
MH#2	56.37	54.44 South	CB#3	56.73	55.74 East	
		54.34 South			Full of Debris & Water	
		53.42 North			Full of Water	
MH#4	56.11	53.69 East	MH#14	56.81	55.38 South	
		53.65 North		CB#15	56.90	Inaccessible
		56.00			56.13 North	
CB#6	56.11	Invert Inaccessible	MH#16	57.45	55.13 North	
		55.01 Northwest			55.12 South	
		55.02 Invt.			55.87 West	
MH#7	56.22	54.05 East	MH#18	56.70	54.07 North	
		54.06 North			54.06 South	
		55.79		55.89 North	MH#19	56.50
CB#8	55.80	Inaccessible		53.90 South		
	CB#9	55.79	Inaccessible	CB#20	56.33	55.52 West
55.82		Inaccessible				

SURVEYOR'S CERTIFICATE

I CERTIFY THAT:
1. THIS SURVEY AND PLAN ARE CORRECT AND IN ACCORDANCE WITH THE SURVEY ACT, THE SURVEYORS ACT, THE LAND TITLES ACT AND THE REGULATIONS MADE UNDER THEM.
2. THE SURVEY WAS COMPLETED ON SEPTEMBER 13, 2019.
DATE: 20/10/19

JOHN H. GUTHRIE
ONTARIO LAND SURVEYOR

Fairhall Moffatt & Woodland
LIMITED
ONTARIO LAND SURVEYORS
Chartered and Land Information Services
100-600 TERRY FOX DRIVE, KANATA, ONTARIO K2P 4B6
TEL: (613) 591-2200 FAX: (613) 591-1449
www.fmw.ca

JOB No. 227300
E 370053, N 5032955
REFERENCE No. 21(b)-49, 15(b)-29
S:\085\227300\DWG 2019-09-16
2273_topo-rev.dwg