

LEGEND / SYMBOL

- EXISTING VEGETATION TO BE RETAINED (Refer to Existing Tree Inventory)
- EXISTING VEGETATION TO BE REMOVED (Refer to Existing Tree Inventory)
- PROPOSED DECIDUOUS TREE DETAIL L1.01
- PROPOSED CONIFEROUS TREE DETAIL L1.01
- PROPOSED CONIFEROUS SHRUB DETAIL L1.01
- PROPOSED SHRUBS / PERENNIALS / GRASSES DETAIL L1.01
- PROPOSED UNIT PAVING PEDESTRIAN WALKING SURFACE
- PROPOSED UNIT PAVING DRIVING / PARKING AREA
- PROPOSED ASPHALT PEDESTRIAN WALKING SURFACE (REFER TO ONLY)
- PROPOSED DECORATIVE AGGREGATE / MAINTENANCE STRIP w/ P.C. CONCRETE EDGE SECTION
- PROPOSED P.C. CONCRETE SEGMENTAL PLANTER WALL DETAIL L1.01
- PROPOSED BICYCLE PARKING DETAIL L1.01

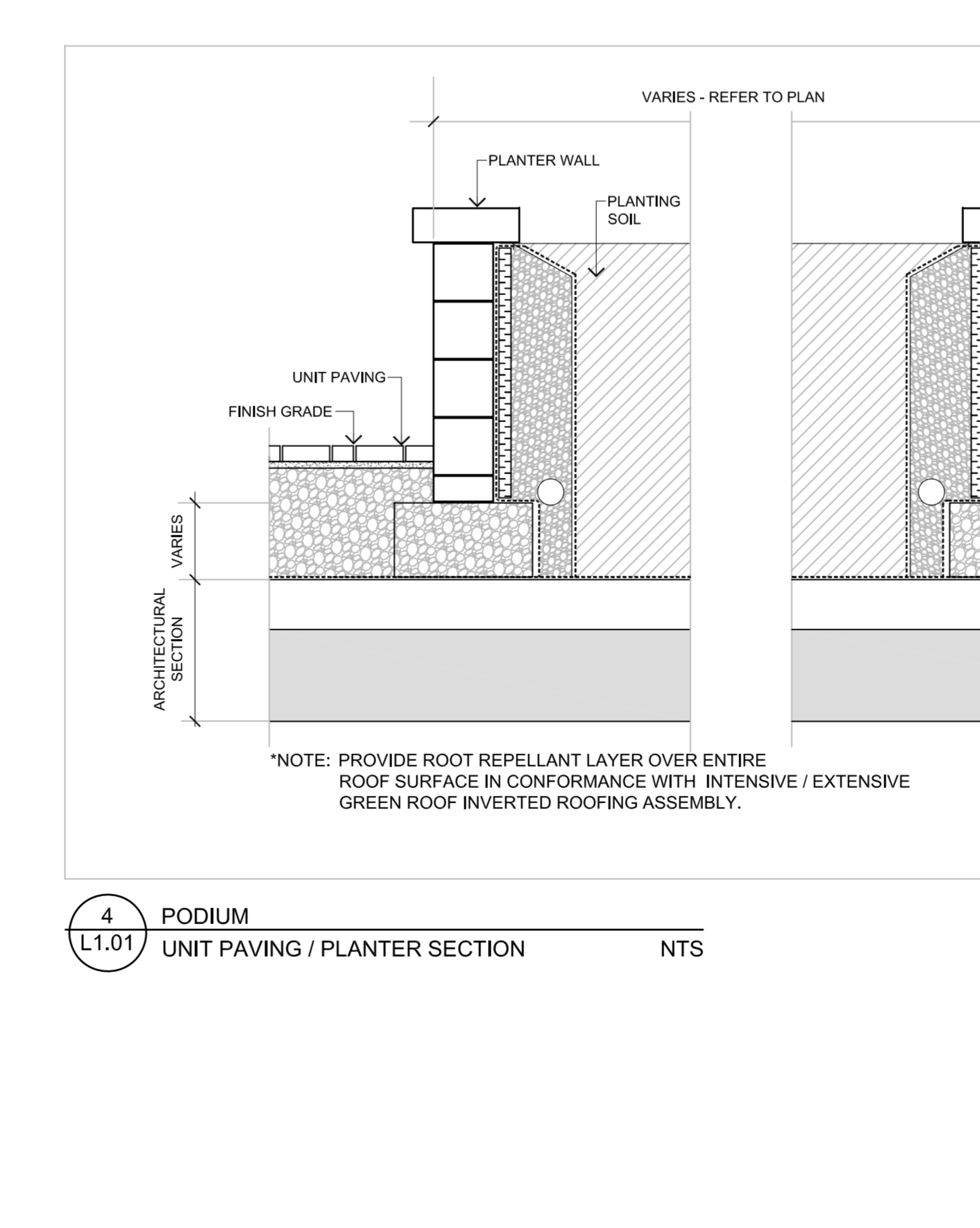
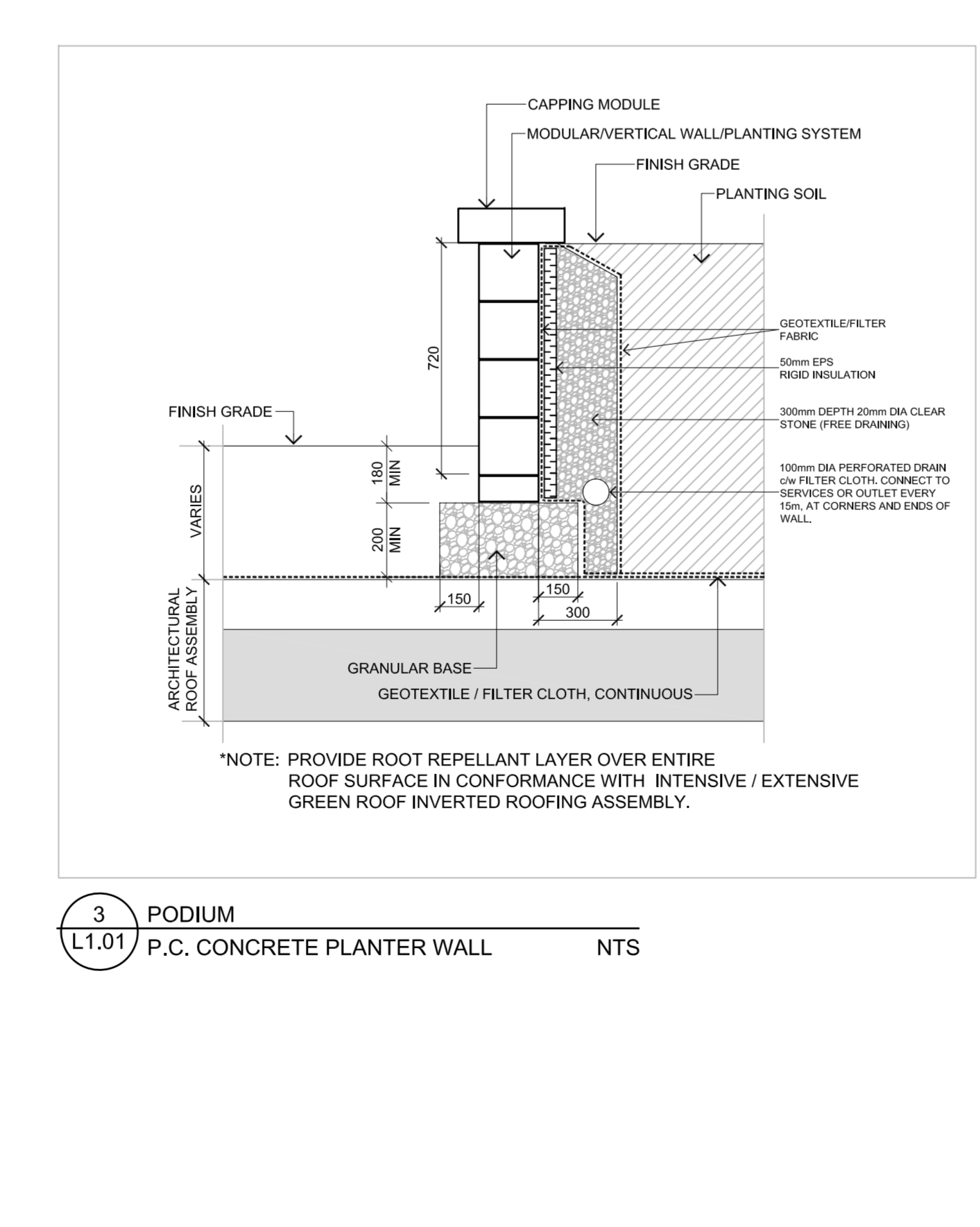
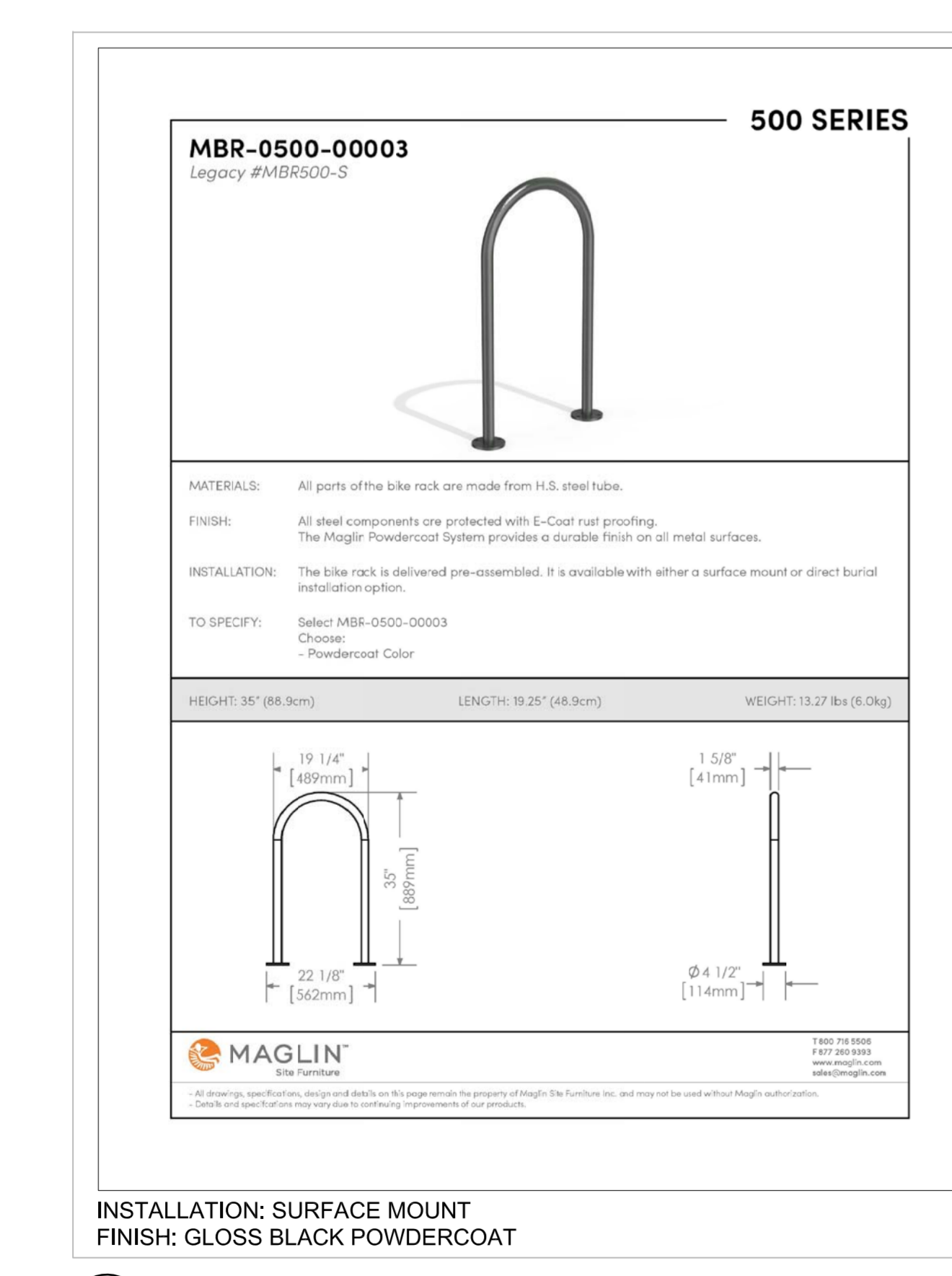
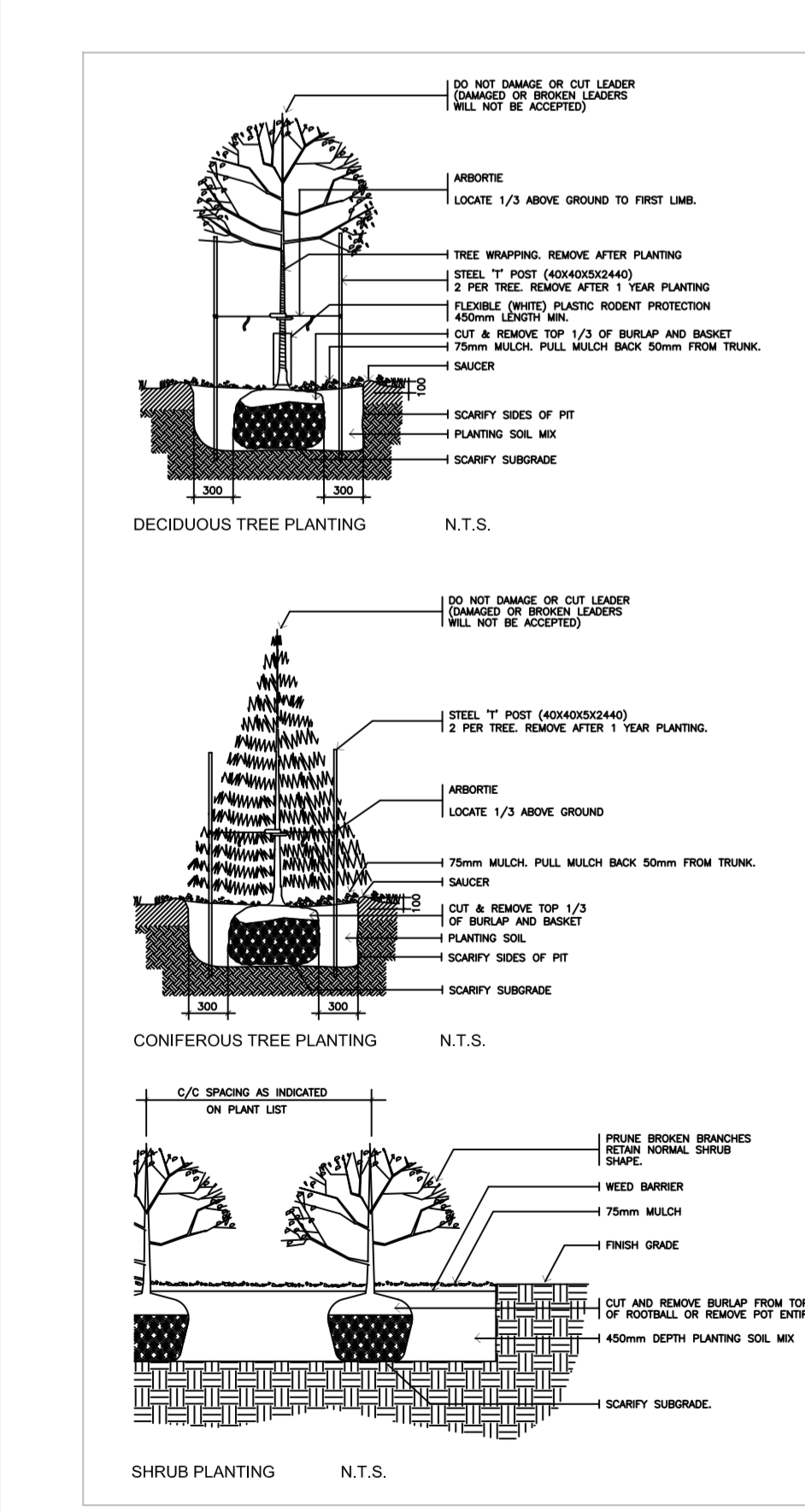
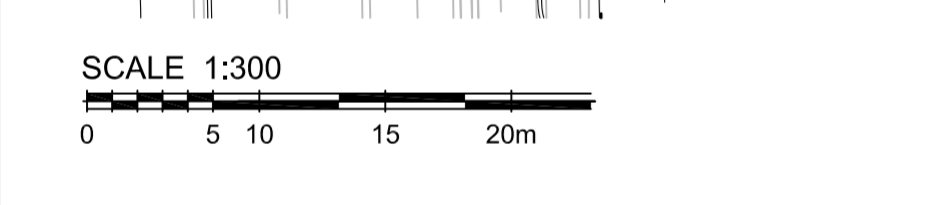
PLANT MATERIAL SCHEDULE PHASE 1

CODE	BOTANICAL NAME	COMMON NAME	QTY.	SIZE	REMARKS
AC	AMELANCHIER CANADENSIS	SHADBLOW SERVICEBERRY	3	50mm cal	B&B, Single Stem
CO	CELTIS OCCIDENTALIS	COMMON HACKBERRY	1	60mm cal	B&B, Single Stem
QR	QUERCUS ROBUR FASTIGIATA	PIRAMIDAL ENGLISH OAK	8	60mm cal	B&B, Single Stem
SR	SYRINGA RETICULATA 'VIORE'	WORY SILV. JAPANESE TREE LILAC	1	50mm cal	B&B, Single Stem
TO	THUJA OCCIDENTALIS	EASTERN WHITE CEDAR	62	125cm H	B&B
CS	CORNUS SERICEA	RED OSIER DOGWOOD	9	50mm H	potbed, 100cm o/c
MP	MYRTICA PENNSYLVANICA	BAYBERRY	9	50mm H	potbed, 100cm o/c
PS	PHYSCALOPUS SPULFOLUS	COMMON HINEBARK	18	50mm H	potbed, 100cm o/c
RAU	REBES AUREUM	FLOWERING CURLIANT	18	50mm H	potbed, 100cm o/c
RB	ROSA BLANDA	SHRUB ROSE	14	50mm H	potbed, 100cm o/c
SA	SYMPHORICARPOS ALBUS	SNOWBERRY	65	50mm H	potbed, 100cm o/c
VO	VIBURNUM DENTATUM	ARROWWOOD	9	50mm H	potbed, 100cm o/c
JCO	JUNIPERUS CHINENSIS 'ONTARIO GREEN'	ONTARIO GREEN JUNIPER	68	125cm H	potbed, 100cm o/c
Rud	RUDBECKIA laetiflora	CUTLEAF CONEFLOWER	10	15 cm pot	plant 60cm o/c
Sal	SALVIA x hybrida 'May Night'	MAY NIGHT SAGE	110	15 cm pot	plant 60cm o/c
OR	ORNAMENTAL GRASSES				
Car	CALAMAGROSTIS x acutiflora	KARL FOERSTER REED GRASS	25	15cm pot	plant 75cm o/c
Pv	PANICUM virgatum	SWITCH GRASS	22	15cm pot	plant 75cm o/c
Spo	SPOROBOLUS heterostachys	PIRAIE DROPSIDE	28	15cm pot	plant 75cm o/c

EXISTING TREE INVENTORY SCHEDULE: (Inventory conducted Jan 24, 2020)

CODE (REFERENCE)	SPECIES	SIZE (cm) dbh -approx	VISUAL / CONDITION / REMARKS
1	Manitoba Maple (<i>Acer regundo</i>)	30	good; invasive; conflict / remove.
2	Ash (<i>Fraxinus</i>)	18	dead; hazardous; conflict / remove.
3	Manitoba Maple (<i>Acer regundo</i>)	27	good; invasive; conflict / remove.
4	Honey-locust (<i>Gleditsia</i>)	40	good; conflict / remove.
5	White Cedar (<i>Thuja occidentalis</i>)	200 cm H	poor; competing with tree canopies; conflict / remove.
6	Honey-locust (<i>Gleditsia</i>)	30	good; conflict / remove.
7	Austrian Pine (<i>Pinus nigra</i>)	18	good; adjacent property / retain and preserve.
8	Honey-locust (<i>Gleditsia</i>)	33	good; adjacent property / retain and preserve.
9	Honey-locust (<i>Gleditsia</i>)	33	good; adjacent property / retain and preserve.
10	Austrian Pine (<i>Pinus nigra</i>)	26	good; adjacent property / retain and preserve.
11	Siberian Elm (<i>Ulmus pumila</i>)	52	good; invasive; conflict / remove.
12	Manitoba Maple (<i>Acer regundo</i>)	30	good; invasive; adjacent property / retain and preserve.
13	Manitoba Maple (<i>Acer regundo</i>)	28	good; invasive; conflict / remove.
14	Manitoba Maple (<i>Acer regundo</i>)	30	good; invasive; adjacent property / retain and preserve.
15 group	Manitoba Maple (<i>Acer regundo</i>)	10-30	overstory, canopy, good; invasive species; retain where not in conflict / remove at proposed access drive.
	Norway Maple (<i>Acer platanoides</i>)	10-20	understory; good; invasive species; retain where not in conflict / remove at proposed access drive.
	Buckthorn (<i>Rhamnus</i>)	shrub	understory; good; invasive species; retain where not in conflict / remove at proposed access drive.
16	Ash (<i>Fraxinus</i>)	80	dead; hazardous; remove.
17 group OFF-SITE	Austrian Pine (<i>Pinus nigra</i>)	(5) 30	good; covered with wild grape / Virginia creeper; may conflict with new road layout / sidewalk; retain where not in conflict.
18 group OFF-SITE	predominately Norway Maple (<i>Acer platanoides</i>)	(clump) 15-35	good; invasive species; may conflict with new road layout / sidewalk; retain where not in conflict / remove at proposed entrance drive.
	understory of Buckthorn (<i>Rhamnus</i>)	shrub	understory; good; invasive species; may conflict with new road layout / sidewalk; retain where not in conflict / remove at proposed entrance drive.
	few Hawthorn (<i>Crataegus</i>)	15	poor; competing with invasive Norway, Manitoba Maples and Buckthorn; may conflict with new road layout / sidewalk; retain where not in conflict / remove at proposed entrance drive.
	and Amur Maple (<i>Acor ginnala</i>)	shrub form	fair; invasive; may conflict with new road layout / sidewalk; retain where not in conflict / remove at proposed entrance drive.
19 group OFF-SITE	Colorado Spruce (<i>Picea pungens</i>)	(10)	fair to poor; competing with Norway Maples; retain where not in conflict / remove at proposed entrance drive.
20 group OFF-SITE	Norway Maple (<i>Acer platanoides</i>)	(clump) 15-35	good; invasive species; retain where not in conflict / remove at proposed entrance drive.
	White Elm (<i>Ulmus americana</i>)	10-15	fair; susceptible to DED; retain where not in conflict / remove at proposed entrance drive.
	Honeysuckle	shrub	good; retain where not in conflict / remove at proposed entrance drive.
21 group OFF-SITE	Colorado Spruce (<i>Picea pungens</i>)	(9) 25	fair; covered with wild grape / Virginia creeper; retain where not in conflict / remove at proposed entrance drive.
22 group OFF-SITE	Manitoba Maple (<i>Acer regundo</i>)	15-35	good; invasive; retain where not in conflict / remove at proposed entrance drive.
	Norway Maple (<i>Acer platanoides</i>)	15-35	good; invasive; retain where not in conflict / remove at proposed entrance drive.
	understory of Buckthorn (<i>Rhamnus</i>)	shrub	good; invasive; retain where not in conflict / remove at proposed entrance drive.
	Honeysuckle (<i>Lonicera</i>)	shrub	good; retain where not in conflict / remove at proposed entrance drive.
	Snowberry (<i>Symphoricarpos</i>)	Shrub	good; retain where not in conflict / remove at proposed entrance drive.
	Serviceberry (<i>Amelanchier</i>)	shrub	good; retain where not in conflict / remove at proposed entrance drive.
	Amur Maple (<i>Acer ginnala</i>)	shrub form	good; retain where not in conflict / remove at proposed entrance drive.

- ### GENERAL NOTES
- This drawing shall be read in conjunction with all relevant Architectural, Engineering and related Drawings and Documents.
 - Refer to Engineering Drawings for Grading and Servicing.
 - Refer to Architectural Drawings for Site layout.
 - Contractor shall provide the location(s) of all services/utilities by consulting Municipal Authorities and Utility companies and shall be responsible for adequate protection from damage during construction.
 - Plant material shall be No. 1 Grade and shall comply with the Metric Guide Specifications For Nursery Stock (latest edition), published by the Canadian Nursery Trades Association.
 - Plant Material locations are Schematic / Approximate only. Contractor shall stake out locations on site prior to work.
 - Contractor shall guarantee all plant material for a period of one (1) full year from the date of final acceptance.
 - Perennials and Ornamental Grasses shall be planted in a continuous prepared bed of 450mm depth planting soil mix covered over with 75mm depth of composted pine mulch to finish grade. (NO WEED CONTROL FABRIC), as specified.
 - Soil areas to receive 125mm topsoil. Soil shall be No. 1 quality conforming to the Canadian Nursery Sod Growers Specification.
 - Reinstate all areas damaged or disturbed beyond the limit of work.
 - Plant Material substitutions shall not be permitted without written approval from the Consultant.
 - Provide protection for existing trees to be retained. Install fencing to Critical Root Zone (CRZ) of each tree or groupings of trees (if close together). No excavation, filling, storage of materials, disposal of chemicals or waste, vehicle traffic or other activity which could cause root zone disturbance or compaction, shall take place within the protected areas.
 - Where limbs of trees are removed to accommodate construction work, they shall be done in accordance with accepted arboricultural practice.
 - Where root systems become exposed due to excavation, carefully trim damaged roots and provide temporary support until backfill is undertaken. Keep roots moist at all times.
 - Construct wells or retaining walls if grades around trees are to be modified. Root feed all existing trees after construction.
 - Contractor shall advise Consultant a minimum of 48hrs. prior to proceeding landscape work and any required Field Reviews.
 - THIS PLAN HAS BEEN PREPARED FOR MUNICIPAL APPROVAL ONLY AND MAY NOT BE USED FOR ANY OTHER PURPOSE.**



FOR APPROVAL ONLY

5	SEPT. 13/22	ISSUE FOR SITE PLAN APPROVAL PH. 1
4	DEC. 2/21	PER SITE CHANGES
3	OCT. 13/21	RE-ISSUE PER CITY COMMENTS (1)
2	MAY 11/21	ISSUE FOR ZBLA
1	JAN. 28/21	ISSUE FOR COORDINATION / REVIEW

Client: 2705460 Ontario Inc.

Project: 112 MONTREAL ROAD PHASE 1 OTTAWA ONTARIO

Drawing Title: LANDSCAPE / TCR PLAN

Drawn	MGB	Date	FEB 2021	Drawing No.	L1.01
Scale	1:300	Project No.	1188		