



**OTTAWA CATHOLIC SCHOOL BOARD**  
570 WEST HUNT CLUB, NEPEAN, ON. (613) 224-4455

**FLOOR PLAN LEGEND**

ROOM NAME	ROOM NAME
PT102B	ROOM NUMBER
XXX	DOOR NUMBER - SEE DOOR SCHEDULE
	WALL TYPES - SEE WALL SCHEDULE
	PARTITION TYPES - SEE WALL SCHEDULE
	DRAWING NOTE
	CORNER GUARD
B.N.	BULLNOSE - CONCRETE BLOCK
F.D.	FLOOR DRAIN
F.O.	FLOOR OUTLET - SEE ELECTRICAL
C.R.	CARD READER
A.P.H.	A.I. PHONE
F.F.	FORCE FLOW HEATER - SEE ELECT.
E.P.	ELECTRICAL PANEL - SEE ELECT.
F.E.	FIRE EXTINGUISHER - RECESSED/SURFACE MOUNT - SEE MECH.
H.B.	HOSE BIB CONNECTION - SEE MECH.
L.	PUSH TO LOCK BUTTON, 1000mm A.F.F.
A.	AUTODOOR OPERATOR - MOUNTED 600mm MIN. FROM LATCH SIDE OF DOOR, 1000mm A.F.F.
E.	EMERGENCY BUTTON C/W BILINGUAL SIGN: "IN THE EVENT OF AN EMERGENCY PUSH EMERGENCY BUTTON AND AUDIBLE AND VISUAL SIGNAL WILL ACTIVATE FOR ASSISTANCE" (LETTERS TO BE 25mm HT. W/ 5mm STROKE)
W.B. X X	12m HT. X LENGTH WHITEBOARD
T.B. X X	12m HT. X LENGTH TACKBOARD
T.B. 2.4/M	2.4m WIDE X 2m HT. TACKBOARD/MIRROR COMBO
P.J.	PANEL JOINT
C	CLOCK, BY OWNER
RWL	RAIN WATER LEADER
G.M.	GAS METER - SEE MECHANICAL
H.O.	DOOR HOLD OPEN DEVICE
F.D.C.	FIRE DEPARTMENT CONNECTION
KC	KEY CABINET, RECESSED INSTALLATION, SEE SPEC.

**KEY PLAN**

**FLOOR PLAN NOTES**

- OPERABLE WALL c/w WHITE BOARD AND DOOR. SEE DOOR SCHEDULE
- SUSPENDED GYM CURTAIN ABOVE
- HALF WALL W/ BUILT-IN SHELVING AND BENCH
- METAL SECURITY GRILLE. SEE DOOR SCHEDULE
- H.M. DOOR FRAME w/ MAGLOCK HOLDER. SEE ELECTRICAL
- PROVIDE WALL MOUNTED SIGN "NO DEEP FRYING IS PERMITTED ON THIS EQUIPMENT"
- EXPOSED DUCT WORK ABOVE. SEE MECHANICAL
- THEATRE CURTAIN
- HEALTH ROOM BED - N.I.C.
- CANDOPY ABOVE
- BULKHEAD ABOVE
- 55" MONITOR - N.I.C. PROVIDE POWER & DATA ABOVE CEILING HEIGHT. SEE ELECTRICAL
- PRINTER - N.I.C.
- P.A. SYSTEM. SEE ELECTRICAL
- SLOP SINK. SEE MECHANICAL
- ACCORDION DOOR
- DOUBLE HEIGHT LOCKER. SEE SPEC.
- PLATFORM LIFT
- 3600 WIDE PROJECTION SCREEN ABOVE
- GALVANIZED STEEL COLUMN
- WASHROOM GATE. SEE DETAIL 16/A710
- STEEL STAIR
- DRINKING FOUNTAIN IN KINDERGARTEN MOUNTED AT 600mm. A.F.F.
- LAVATORY IN KINDERGARTEN MOUNTED AT 600mm. A.F.F.
- ROOF ACCESS LADDER c/w CAGE
- WALL MOUNTED ACOUSTIC PANEL - 1200mm X 2400mm & PLACED 600mm APART. TYP.
- LINE UP & SPACE EQUALLY AT PHONE, CARD READER & AUTO DOOR OPERATOR @ 1000mm HT.
- ENCLOSURE FOR TEMPORARY GENERATOR OUTLET - SEE ELECTRICAL
- SPRINK F.O. & CALK @ PENETRATION
- GYM P.A. c/w PRE MANUFACTURED CABINET - SEE ELECTRICAL
- MECHANICAL EQUIPMENT. SEE MECH.
- 2000mm (W) x 1200mm (D) x 100mm (H) HOUSEKEEPING SLAB
- UNDERSTAGE DOLLY - 4 @ 3600mm LONG
- OPERABLE WALL
- FIRE SHUTTER ABOVE

**EXTERIOR WALL ASSEMBLIES**

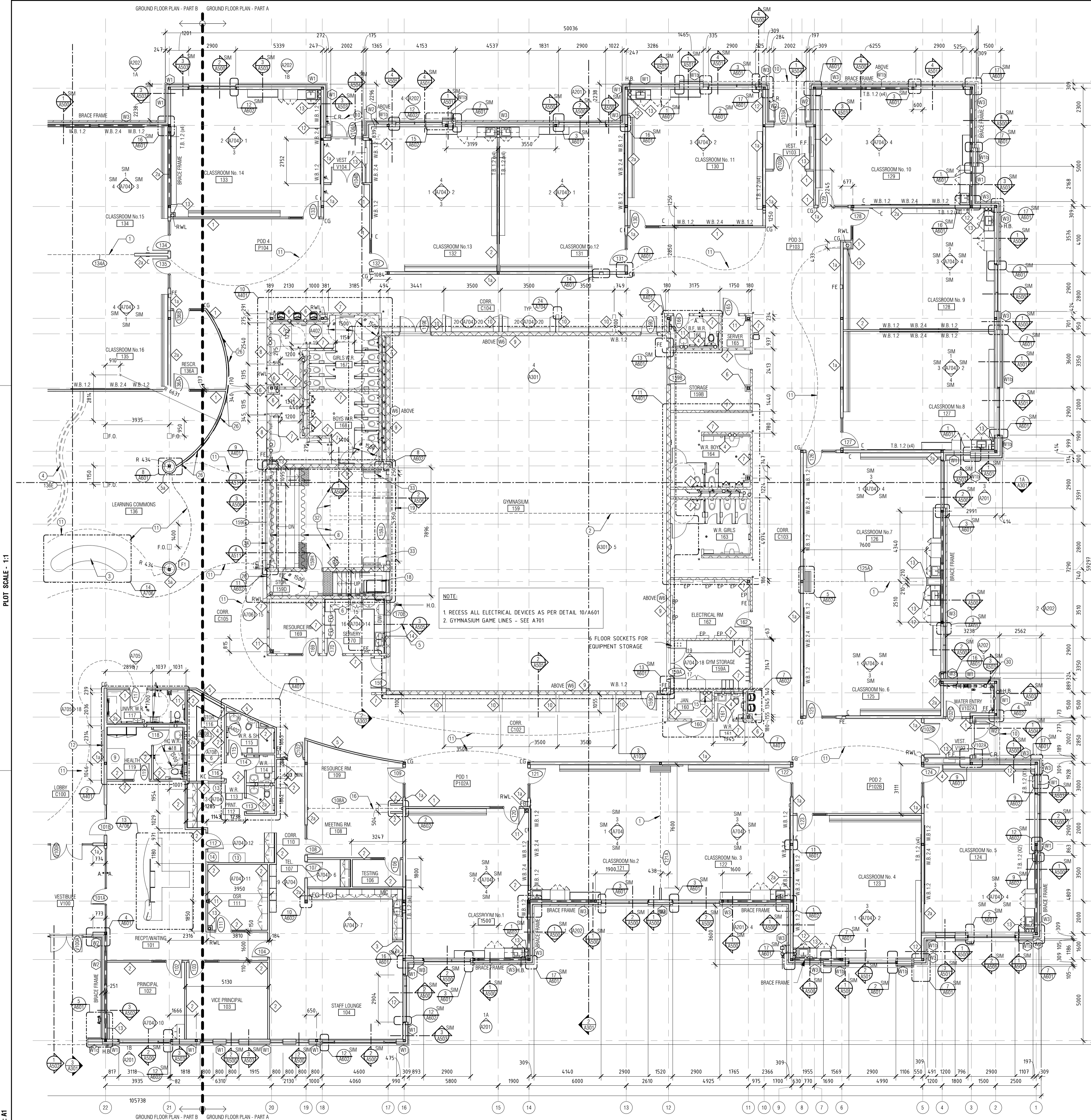
- CURTAIN WALL**
  - 152mm ALUMINUM CURTAIN WALL
  - REFER TO WINDOW ELEVATION FOR PATTERN & GLASS TYPE
- HIGH PRESSURE LAMINATE PANEL BOARD**
  - 16 GYPSUM BOARD
  - 6mm POLY VAPOUR BARRIER
  - 152 STRUCT. STEEL STUDS @ 400mm O.C.
  - 150 BATT INSULATION (R20)
  - 13 GYPSUM SHEATHING
  - AIR BARRIER
  - 100 MINERAL WOOL INSULATION (R15)
  - 100 THERMAL CLIP @ 400 O.C. HORIZ. & 1200 O.C. VERT.
  - 50 VERT. GALVANIZED STEEL HATZ GIRTS @ 1200 O.C.
  - 8mm HIGH PRESSURE LAMINATE PANEL BOARD
- HIGH PRESSURE LAMINATE PANEL BOARD - WIDE**
  - 16 GYPSUM BOARD
  - 92 STEEL STUDS 400mm O.C.
  - 100 AIR SPACE
  - 6mm POLY VAPOUR BARRIER
  - 152 STRUCT. STEEL STUDS @ 400 O.C.
  - 150 BATT INSULATION (R20)
  - 13 GYPSUM SHEATHING
  - AIR BARRIER
  - 100 MINERAL WOOL INSULATION (R15)
  - 100 THERMAL CLIP @ 400 O.C. HORIZ. & 1200 O.C. VERT.
  - 25 VERT. GALVANIZED STEEL HATZ GIRTS @ 1200 O.C.
  - 8mm HIGH PRESSURE LAMINATE PANEL BOARD
- HIGH PRESSURE LAMINATE PANEL BOARD - MAIN ENTRANCE**
  - 12mm ALUMINUM WOOD LOOK CLADDING
  - 50mm VERT. GALVANIZED STEEL HATZ GIRTS @ 1200 O.C.
  - 13 GYPSUM SHEATHING
  - 152 STRUCT. STEEL STUDS @ 400 O.C.
  - 13 GYPSUM SHEATHING
  - 150 VERT. GALVANIZED STEEL HATZ GIRTS @ 1200 O.C.
  - 8mm HIGH PRESSURE LAMINATE PANEL BOARD
- ALUMINUM CLADDING**
  - 16 GYPSUM BOARD
  - 6mm POLY VAPOUR BARRIER
  - 152 STRUCT. STEEL STUDS @ 400 O.C.
  - 150 BATT INSULATION (R20)
  - 13 GYPSUM SHEATHING
  - AIR BARRIER
  - 100 MINERAL WOOL INSULATION (R15)
  - 100 THERMAL CLIP @ 400 O.C. HORIZ. & 1200 O.C. VERT.
  - 50 VERT. GALVANIZED STEEL Z GIRTS @ 1200 O.C.
  - 12mm ALUMINUM WOOD LOOK CLADDING
- BRICK**
  - 16 GYPSUM BOARD
  - 6mm POLY VAPOUR BARRIER
  - 152 STRUCT. STEEL STUDS @ 400 O.C.
  - 150 BATT INSULATION (R20)
  - 13 GYPSUM SHEATHING
  - AIR BARRIER
  - 100 MINERAL WOOL INSULATION (R15)
  - 32 AIR SPACE
  - 90 FACE BRICK
- ARCH. BLOCK - WIDE**
  - 16 GYPSUM BOARD
  - 6mm POLY VAPOUR BARRIER
  - 152 STRUCT. STEEL STUDS @ 400 O.C.
  - 150 BATT INSULATION (R20)
  - 13 GYPSUM SHEATHING
  - AIR BARRIER
  - 100 MINERAL WOOL INSULATION (R15)
  - 32 AIR SPACE
  - 90 ARCHITECTURAL BLOCK
- ARCH. BLOCK - WIDE - MAIN ENTRANCE**
  - 90 ARCHITECTURAL BLOCK
  - 13 GYPSUM SHEATHING
  - 152 STRUCT. STEEL STUDS @ 400 O.C.
  - 13 GYPSUM SHEATHING
  - 32 AIR SPACE
  - 90 ARCHITECTURAL BLOCK
- STEEL CLADDING (ROOF ACCESS)**
  - 16 GYPSUM BOARD
  - 6mm POLY VAPOUR BARRIER
  - 152 STRUCT. STEEL STUDS @ 400 O.C.
  - 150 BATT INSULATION (R20)
  - 13 GYPSUM SHEATHING
  - AIR BARRIER
  - 100 MINERAL WOOL INSULATION (R15)
  - 100 THERMAL CLIP @ 400 O.C. HORIZ. & 1200 O.C. VERT.
  - 25 VERT. GALVANIZED STEEL Z GIRTS @ 1200 O.C.
  - 40mm STEEL CLADDING
- STEEL CLADDING 240 CONCRETE BLOCK (ROOF ACCESS)**
  - 240 CONCRETE BLOCK
  - PEEL AND STICK A / V BARRIER
  - 127 MINERAL WOOL INSULATION (R15)
  - 127 THERMAL CLIP @ 400 O.C. HORIZ. & 1200 O.C. VERT.
  - 40mm STEEL CLADDING
- STEEL CLADDING 190 CONCRETE BLOCK (ROOF ACCESS)**
  - 190 CONCRETE BLOCK
  - PEEL AND STICK A / V BARRIER
  - 127 MINERAL WOOL INSULATION (R15)
  - 127 THERMAL CLIP @ 400 O.C. HORIZ. & 1200 O.C. VERT.
  - 25 VERT. GALVANIZED STEEL Z GIRTS @ 1200 O.C.
  - 40mm STEEL CLADDING
- ROOF MECHANICAL SHAFT**
  - 152 STRUCT. STEEL STUDS @ 400 O.C.
  - 13 GYPSUM SHEATHING
  - PEEL AND STICK A / V BARRIER
  - 150mm MINERAL WOOL INSULATION (R17.2)
  - 150 THERMAL CLIP @ 400 O.C. HORIZ. & 1200 O.C. VERT.
  - 25 VERT. GALVANIZED STEEL Z GIRTS @ 1200 O.C.
  - 40mm STEEL CLADDING
  - REFER TO 1/A001 FOR LOCATION OF FIRE RATED WALLS
  - REFER TO A103 FOR INTERIOR WALL PARTITIONS

**ALUMINUM CLADDING**

- 16 GYPSUM BOARD
- 6mm POLY VAPOUR BARRIER
- 152 STRUCT. STEEL STUDS @ 400 O.C.
- 150 BATT INSULATION (R20)
- 13 GYPSUM SHEATHING
- AIR BARRIER
- 100 MINERAL WOOL INSULATION (R15)
- 32 AIR SPACE
- 90 ARCHITECTURAL BLOCK

**ARCH. BLOCK - WIDE**

- 16 GYPSUM BOARD
- 6mm POLY VAPOUR BARRIER
- 152 STRUCT. STEEL STUDS @ 400 O.C.
- 150 BATT INSULATION (R20)
- 13 GYPSUM SHEATHING
- AIR BARRIER
- 100 MINERAL WOOL INSULATION (R15)
- 32 AIR SPACE
- 90 ARCHITECTURAL BLOCK



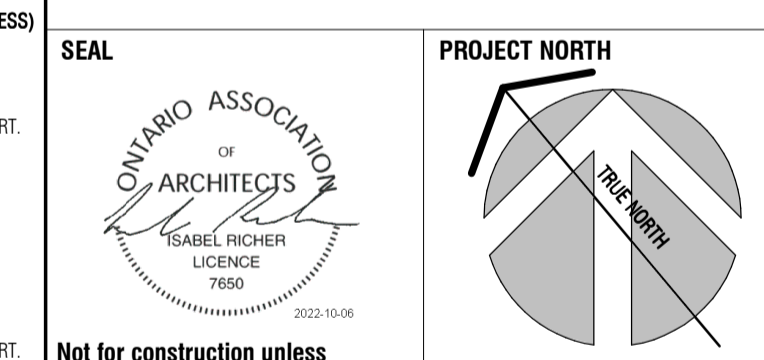
NOTE:  
1. RECESS ALL ELECTRICAL DEVICES AS PER DETAIL 10/A601  
2. GYMNASIUM GAME LINES - SEE A701

GROUND FLOOR PLAN - PART A  
1:125

2	ISSUED FOR SITE PLAN CONTROL	OCT/07/2022
1	ISSUED FOR 85% REVIEW/CLASS A COST ESTIMATE	OCT/21/2022
REV	REVISION DESCRIPTION	DATE

THIS DRAWING IS THE EXCLUSIVE PROPERTY OF PTE & RICHARDS - TEMPRANO & YOUNG ARCHITECTS INC. COPYRIGHT RESERVED

CONTRACTOR TO VERIFY ALL DIMENSIONS AND NOTIFY THE ARCHITECT OF ANY DIMENSIONAL ERRORS AND/OR POSSIBLE TRADE INTERFERENCE/CONFLICT FOR CLARIFICATION PRIOR TO COMMENCEMENT OF THE WORK. DO NOT SCALE DRAWINGS.



Not for construction unless SEALED and SIGNED

**P R PYE & RICHARDS -**  
**T Y TEMPRANO & YOUNG**  
**ARCHITECTS INC.**

824 Meath St. Suite 200 613.724.7700  
Ottawa, ON K1Z 6E8 info@prty.ca

**PROJECT**  
**OCSB RIVERSIDE SOUTH ELEMENTARY SCHOOL**

836 SOLARIUM AVENUE OTTAWA, ONTARIO

**DRAWING**  
**GROUND FLOOR PLAN-PART A**

PROJECT NO.	22022	DRAWING NO.	A102
SCALE -	AS NOTED		
DRAWN -	DL		
CHECKED -	IR		
PLOT DATE -	OCT/07/2022	PLOTTED BY -	

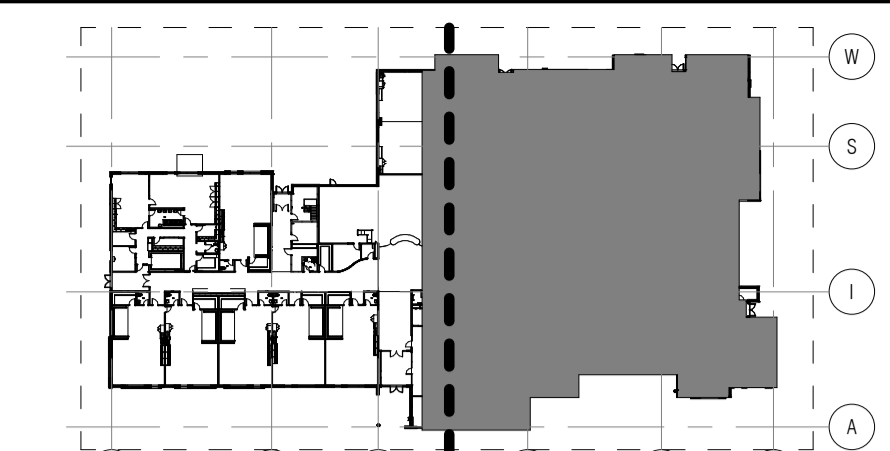


OTTAWA CATHOLIC SCHOOL BOARD

570 WEST HUNT CLUB, NEPEAN, ON. (613)-224-4455

FLOOR PLAN LEGEND

ROOM NAME	FLOOR NAME	ROOM NUMBER
XX	DOOR NUMBER - SEE DOOR SCHEDULE	
W	WALL TYPES - SEE WALL SCHEDULE	
P	PARTITION TYPES - SEE WALL SCHEDULE	
D	DRAWING NOTE	
C	CORNER GUARD	
B.N.	BULLNOSE - CONCRETE BLOCK	
F.D.	FLOOR DRAIN	
F.O.	FLOOR OUTLET - SEE ELECTRICAL	
C.R.	CARD READER	
A.P.H.	A.I. PHONE	
F.F.	FORCE FLOW HEATER - SEE ELECT.	
E.P.	ELECTRICAL PANEL - SEE ELECT.	
F.E.	FIRE EXTINGUISHER - RECESSED/SURFACE MOUNT - SEE MECH.	
H.B.	HOSE BIB CONNECTION - SEE MECH.	
L	PUSH TO LOCK BUTTON, 1000mm A.F.F.	
A.	AUTODOOR OPERATOR - MOUNTED 600mm MIN. FROM LATCH SIDE OF DOOR, 1000mm A.F.F.	
E	EMERGENCY BUTTON C/W BILINGUAL SIGN "IN THE EVENT OF AN EMERGENCY PUSH EMERGENCY BUTTON AND AUDIBLE AND VISUAL SIGNAL WILL ACTIVATE FOR ASSISTANCE" (LETTERS TO BE 25mm HT W/ 5mm STROKE)	
W.B. X.X	1.2m HT. X LENGTH WHITEBOARD	
T.B. X.X	1.2m HT. X LENGTH TACKBOARD	
T.B. 2.4/M	2.4m WIDE X 2m HT. TACKBOARD/MIRROR COMBO	
P.J.	PANEL JOINT	
C	CLOCK, BY OWNER	
RWL	RAIN WATER LEADER	
G.M.	GAS METER - SEE MECHANICAL	
H.O.	DOOR HOLD OPEN DEVICE	
F.D.C.	FIRE DEPARTMENT CONNECTION	
KC	KEY CABINET, RECESSED INSTALLATION, SEE SPEC.	



KEY PLAN

INTERIOR WALL ASSEMBLIES

- ST. STUD GYP. CORRIDOR WALL**
  - 16mm GYPSUM BOARD ABUSE RESISTANT ON CORRIDOR SIDE TO 1220 A.F.F. -16mm GYPSUM BOARD ABOVE
  - 92mm STEEL STUDS AT 400mm O.C. MAX.
  - 76mm SOUND ATTENUATION BATT INSULATION
  - 16mm GYPSUM BOARD
  - WHERE FIRE RATED, USE ULC W53 & 16mm TYPE X GYPSUM BOARD FULL HT. TAPE & FILL JOINTS ABOVE CEILING WHERE FIRE RATED
  - FIRE STOP ALL PERIMETERS AND PENETRATIONS WITH ULC LISTED ASSEMBLIES TO ULC-407
  - EXTEND PARTITION TO U/S STRUCTURE
- FULL HT. ST. STUD GYP. CORRIDOR PLUMBING WALL**
  - SAME AS WALL TYPE 1 W/
  - 152mm STEEL STUDS AT 400mm O.C. MAX.
- FULL HT. ST. STUD GYP. WALL - CLASSROOM/OFFICE**
  - 16mm GYPSUM BOARD
  - 92mm STEEL STUDS AT 400mm O.C. MAX.
  - 76mm SOUND ATTENUATION BATT INSULATION
  - 16mm GYPSUM BOARD
  - WHERE FIRE RATED, USE ULC W53 & 16mm TYPE X GYPSUM BOARD FULL HT. TAPE & FILL JOINTS ABOVE CEILING WHERE FIRE RATED
  - FIRE STOP ALL PERIMETERS AND PENETRATIONS WITH ULC LISTED ASSEMBLIES TO ULC-407
  - EXTEND PARTITION TO U/S STRUCTURE
- FULL HT. ST. STUD GYP. PLUMBING WALL - CLASSROOM/OFFICE**
  - SAME AS WALL TYPE 2 W/
  - 152mm STEEL STUDS AT 400mm O.C. MAX.
- CEILING HT. WALL**
  - 16mm GYPSUM BOARD
  - 92mm STEEL STUDS AT 400mm O.C. MAX.
  - 16mm GYPSUM BOARD
  - EXTEND PARTITION STUDS TO U/S OF STRUCTURE ABOVE & GYPSUM TO 150mm ABOVE FINISHED CEILING
- TYPICAL FURRED WALL**
  - 16mm GYPSUM BOARD
  - 92mm STEEL STUDS AT 400mm O.C. MAX.
  - 76mm SOUND ATTENUATION BATT INSULATION
  - EXTEND PARTITION FULL HEIGHT
- TYPICAL CURVED WALL - 2 SIDES**
  - (3) LAYERS 6mm FLEX GYPSUM BOARD
  - 92mm 20 GAUGE STEEL STUDS AT 230mm O.C. MAX.
  - 76mm SOUND ATTENUATION BATT INSULATION
  - (3) LAYERS 6mm FLEX GYPSUM BOARD
  - EXTEND 3 LAYERS TO 150mm ABOVE CEILING, 1 LAYER FULL HEIGHT
- TYPICAL CURVED WALL AT COLUMN**
  - SAME AS WALL TYPE 5 W/
  - GYPSUM ONLY ONE SIDE
- 90mm CONCRETE BLOCK**
  - EXTEND PARTITION FULL HEIGHT
- 140mm CONCRETE BLOCK w/ ULC ASSEMBLIES**
  - WHERE 1 HR. FIRE RATED, FIRE STOP FULL PERIMETERS & PENETRATIONS WITH ULC LISTED ASSEMBLIES
  - EXTEND PARTITION FULL HEIGHT
- 190mm CONCRETE BLOCK w/ ULC ASSEMBLIES**
  - WHERE 1 HR. FIRE RATED, FIRE STOP FULL PERIMETERS & PENETRATIONS WITH ULC LISTED ASSEMBLIES
  - EXTEND PARTITION FULL HEIGHT
- 240mm CONCRETE BLOCK w/ ULC ASSEMBLIES**
  - WHERE 1 HR. FIRE RATED, FIRE STOP FULL PERIMETERS & PENETRATIONS WITH ULC LISTED ASSEMBLIES
  - EXTEND PARTITION FULL HEIGHT

FIN WALL CORRIDOR

- 16mm ABUSE RESISTANT GYPSUM BOARD
- 152mm STEEL STUDS AT 400mm O.C. MAX. c/w 64X64 HSS @ 1200 O.C.
- 16mm ABUSE RESISTANT GYPSUM BOARD
- EXTEND STUD TO 1800mm ABOVE FINISHED FLOOR c/w SOLID WOOD CAP - REFER TO MILLWORK DRAWING

FURRED WALL

- 16mm GYPSUM BOARD
- 41mm STEEL STUDS AT 400mm O.C. MAX.
- SOUND ATTENUATION BATT INSULATION AROUND RWL ENCLOSURE

FURRED WALL

- 16mm GYPSUM BOARD (ABUSE RESISTANT ON CORRIDOR SIDE TO 1220 A.F.F. WHERE APPLICABLE)
- 64mm STEEL STUDS AT 400mm O.C. MAX.
- EXTEND PARTITION FULL HEIGHT
- SOUND ATTENUATION BATT INSULATION AROUND RWL ENCLOSURE

FURRED WALL

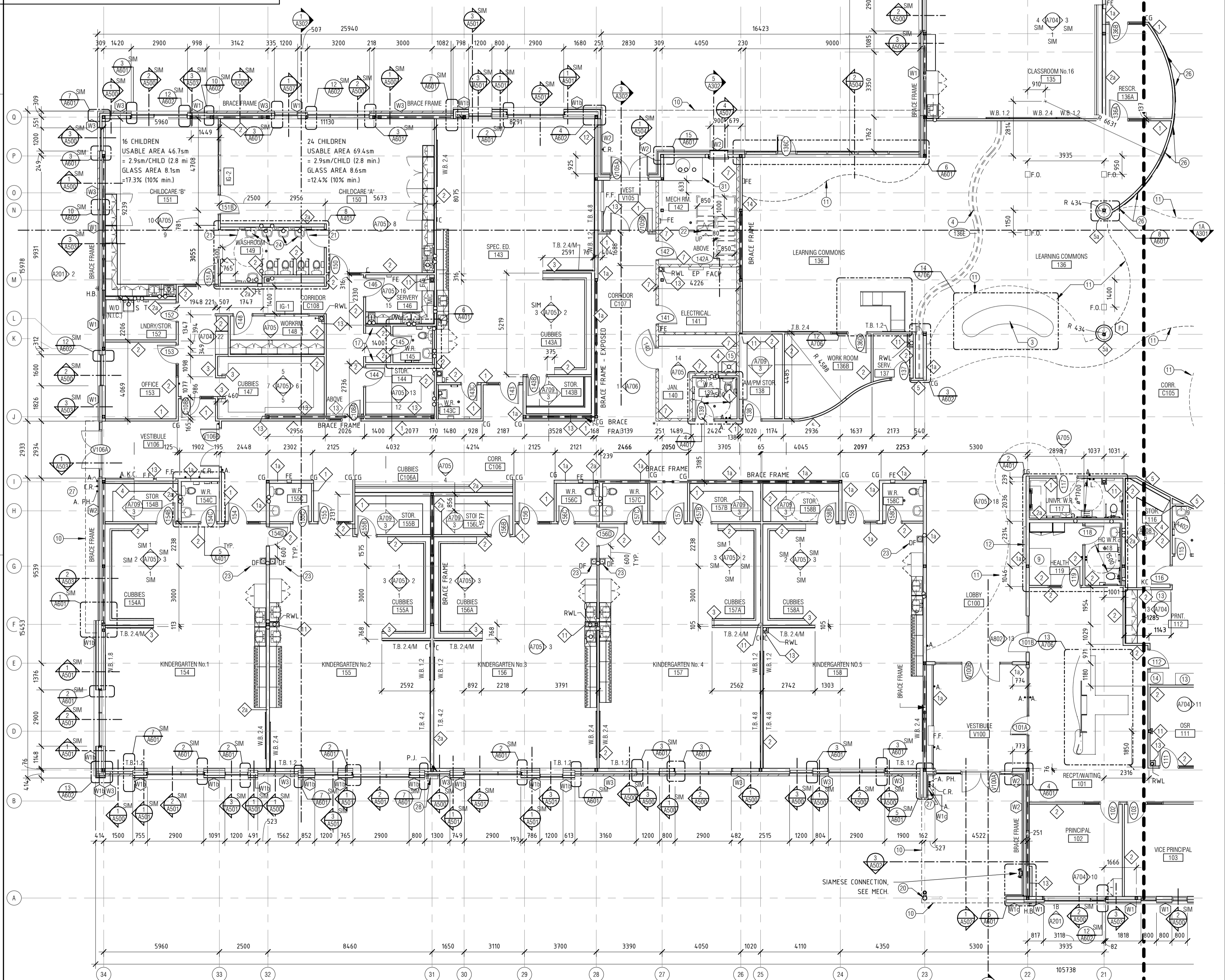
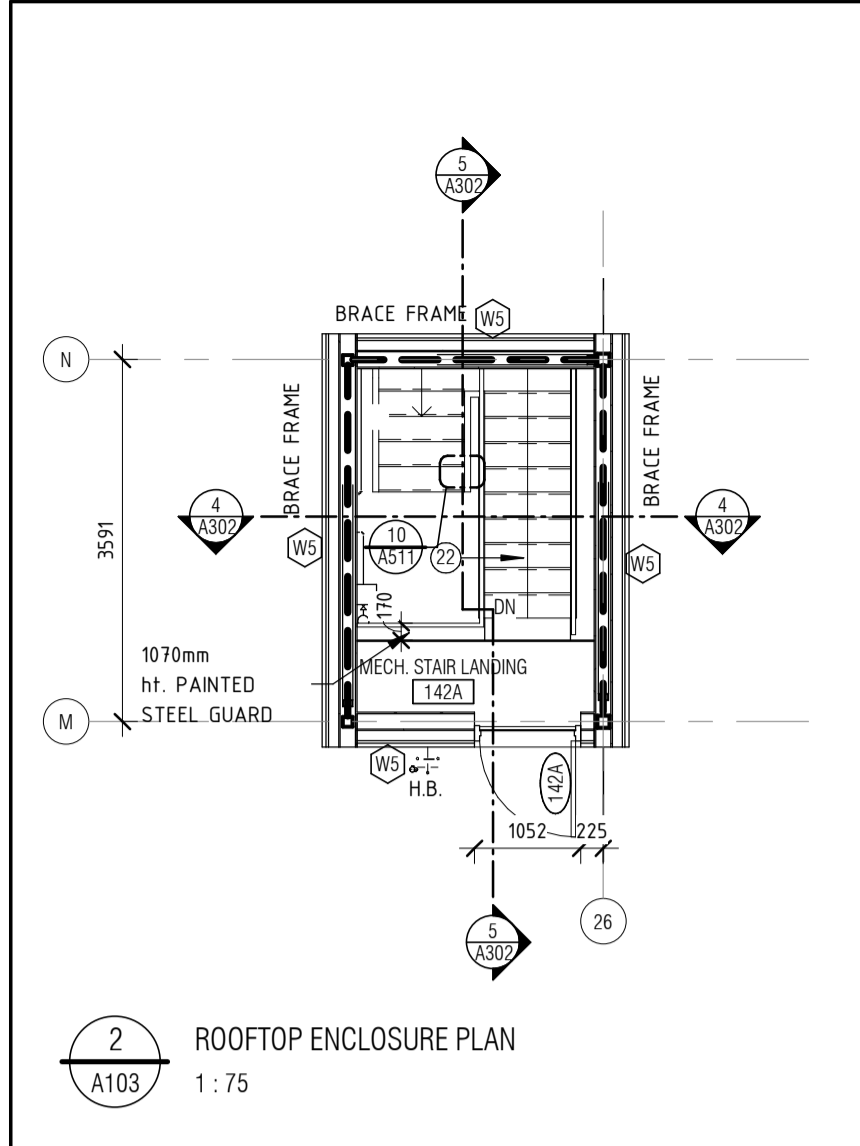
- 16mm GYPSUM BOARD
- 92mm STEEL STUDS AT 400mm O.C. MAX.

SHAFT WALL

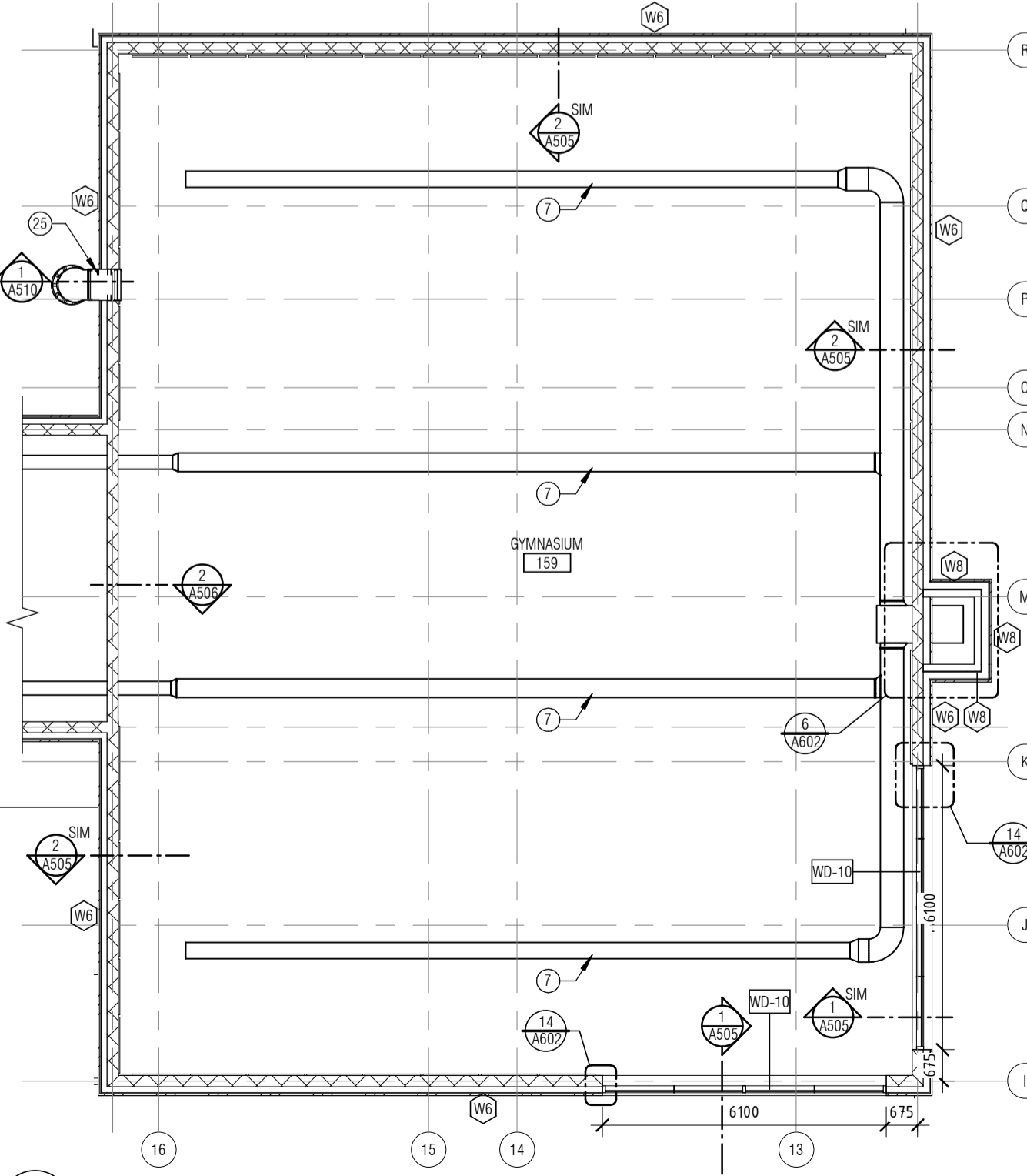
- 16mm TYPE X GYPSUM BOARD
- 64mm C-H STUDS 25 ga. @ 400mm O.C. MAX.
- 25mm LINER PANEL

FLOOR PLAN NOTES

- OPERABLE WALL c/w WHITE BOARD AND DOOR, SEE DOOR SCHEDULE
- SUSPENDED GYM CURTAIN ABOVE
- HALF WALL W/ BUILT-IN SHELVING AND BENCH
- METAL SECURITY GRILLE, SEE DOOR SCHEDULE
- H.M. DOOR FRAME w/ MAGLOCK HOLDER, SEE ELECTRICAL
- PROVIDE WALL MOUNTED SIGN "NO DEEP FRYING IS PERMITTED ON THIS EQUIPMENT"
- EXPOSED DUCT WORK ABOVE, SEE MECHANICAL
- THEATRE CURTAIN
- HEALTH ROOM BED - N.I.C.
- CANDY ABOVE
- BULKHEAD ABOVE
- 35" MONITOR - N.I.C. PROVIDE POWER & DATA BELOW CEILING HEIGHT, SEE ELECTRICAL
- PRINTER - N.I.C.
- P.A. SYSTEM, SEE ELECTRICAL
- SLOP SINK, SEE MECHANICAL
- ACCORDION DOOR
- DOUBLE HEIGHT LOCKER, SEE SPEC.
- PLATFORM LIFT
- 3600 WIDE PROJECTION SCREEN ABOVE
- GALVANIZED STEEL COLUMN
- WASHROOM GATE, SEE DETAIL 16A/710
- STEEL STAR
- DRINKING FOUNTAIN IN KINDERGARTEN MOUNTED AT 600mm A.F.F.
- LAVATORY IN KINDERGARTEN MOUNTED AT 600mm A.F.F.
- ROOF ACCESS LADDER c/w CAGE
- WALL MOUNTED ACOUSTIC PANEL - 1200mm X 2400mm & PLACED 600mm APART, TYP.
- LINE UP & SPACE EQUALLY AT PHONE, CARD READER & AUTO DOOR OPERATOR @ 1000mm HT.
- ENCLOSURE FOR TEMPORARY GENERATOR OUTLET - SEE ELECTRICAL SPRAY FOAM & CAULK @ PENETRATION
- GYM P.A. c/w PRE-MANUFACTURED CABINET - SEE ELECTRICAL
- MECHANICAL EQUIPMENT, SEE MECH.
- 2000mm (W) x 1200mm (D) x 100mm (H) HOUSEKEEPING SLAB
- UNDERSTAGE DOLLY - 4 @ 3660mm LONG
- OPERABLE WALL
- FIRE SHUTTER ABOVE



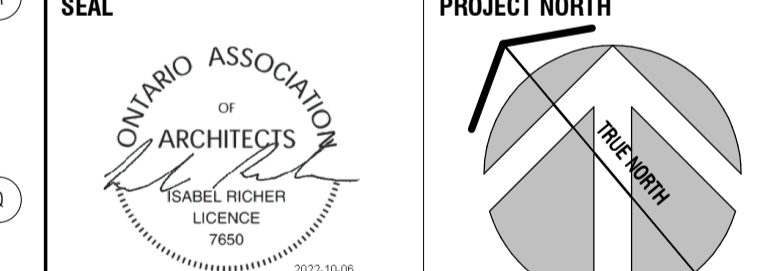
1 GROUND FLOOR PLAN - PART B 1:125



3 HIGH GYM FLOOR PLAN 1:125

REV	REVISION DESCRIPTION	DATE
2	ISSUED FOR SITE PLAN CONTROL	OCT/07/2022
1	ISSUED FOR 85% REVIEW/CLASS A COST ESTIMATE	OCT/21/2022

THIS DRAWING IS THE EXCLUSIVE PROPERTY OF PRY & RICHARDS - TEMPRANO & YOUNG ARCHITECTS INC. COPYRIGHT RESERVED



Not for construction unless SEALED and SIGNED

PR TY PYE & RICHARDS - TEMPRANO & YOUNG ARCHITECTS INC.

824 Meath St. Suite 200 Ottawa, ON K1Z 6E8 613.724.7700 info@prty.ca

PROJECT OCSB RIVERSIDE SOUTH ELEMENTARY SCHOOL

836 SOLARIUM AVENUE OTTAWA, ONTARIO

DRAWING GROUND FLOOR PLAN-PART B

PROJECT NO.	22022	DRAWING NO.	A103
SCALE	AS NOTED		
DRAWN -	DL		
CHECKED -	IR		
PLOT DATE -	OCT/07/2022	PLOTTED BY -	



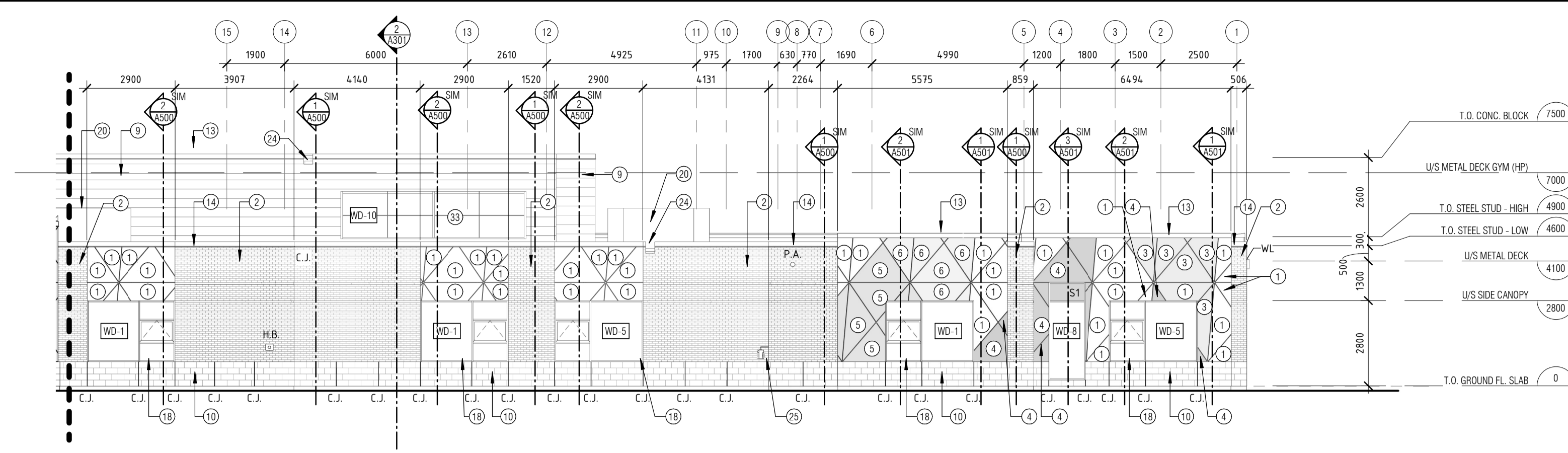
OTTAWA CATHOLIC SCHOOL BOARD

570 WEST HUNT CLUB, NEPEAN, ON. (613)-224-4455

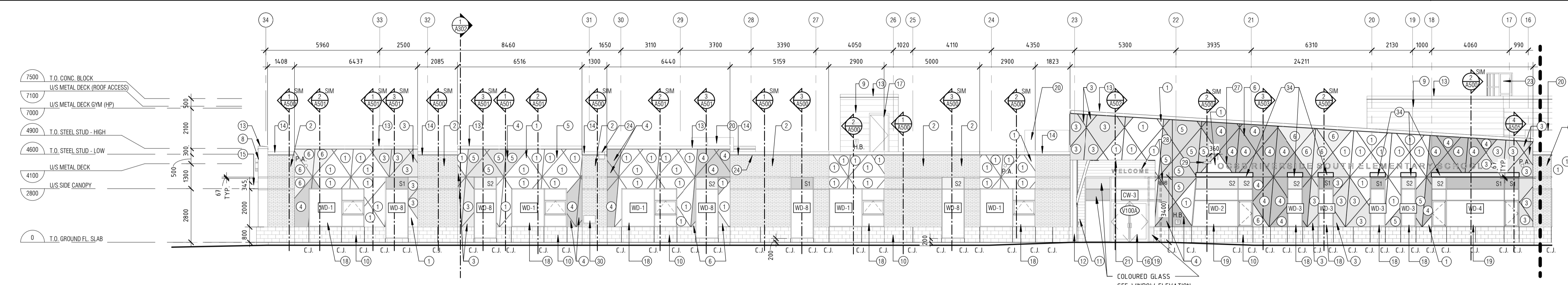
ELEVATION NOTES

- 1 HIGH PRESSURE LAMINATE - FINISH 1 (OFF-WHITE)
- 2 GREY BRICK - FINISH 2
- 3 HIGH PRESSURE LAMINATE - FINISH 3 (YELLOW)
- 4 HIGH PRESSURE LAMINATE - FINISH 4 (GREY)
- 5 HIGH PRESSURE LAMINATE - FINISH 5 (BLUE)
- 6 HIGH PRESSURE LAMINATE - FINISH 6 (LIME)
- 7 RESERVE
- 8 SIGNAGE (CASH ALLOWANCE)
- 9 PRE-FINISHED HORIZONTAL METAL CLADDING - FINISH 9
- 10 CONCRETE BLOCK - FINISH 10
- 11 ALUMINUM HORIZONTAL CLADDING - FINISH 11 (WOOD TEXTURE)
- 12 GALVANIZED STEEL COLUMN - FINISH 12
- 13 PRE-FINISHED METAL FLASHING - FINISH 13 (TO MATCH WHITE LAMINATE PANEL)
- 14 PRE-FINISHED METAL FLASHING - FINISH 14 (TO MATCH GREY BRICK)
- 15 HIGH PRESSURE LAMINATE - FINISH 15 (WHITE)
- 16 ALUMINUM ENTRANCE FRAMING
- 17 PRESSED STEEL FRAME (PAINTED) & HOLLOW METAL DOOR
- 18 ALUMINUM WINDOW FRAMING
- 19 ALUMINUM CURTAIN WALL FRAMING
- 20 ROOF TOP UNIT - SEE MECH.
- 21 ALUMINUM SOFFIT (WOOD TEXTURE)
- 22 RESERVE
- 23 ROOF ACCESS LADDER C/W CAGE
- 24 SCUPPER (PRE-FINISHED METAL)
- 25 GAS METER - SEE MECHANICAL
- 26 AIR INTAKE WALL BOX - SEE MECHANICAL
- 27 300mm HT. CLEAR ANODIZED LETTERING - SEE CASH ALLOWANCE
- 28 200mm HT. CLEAR ANODIZED LETTERING - SEE CASH ALLOWANCE
- 29 BACK LIT CROSS - SEE ELECTRICAL
- 30 ENCLOSURE FOR TEMPORARY GENERATOR OUTLET - SEE ELECTRICAL SPRAY FOAM & CAULK @ PENETRATION
- 31 LINE UP & SPACE EQUAL @ APPHONE, CARD READER & AUTO DOOR OPERATOR @ 1000mm HT.
- 32 INTAKE LOUVER - SEE MECH. COLOUR TO MATCH CEDAR WOOD FINISH.
- 33 ALUMINUM FRAMING WITH TRANSLUCENT GLAZING PANEL.
- 34 ALUMINUM SUN SHADES

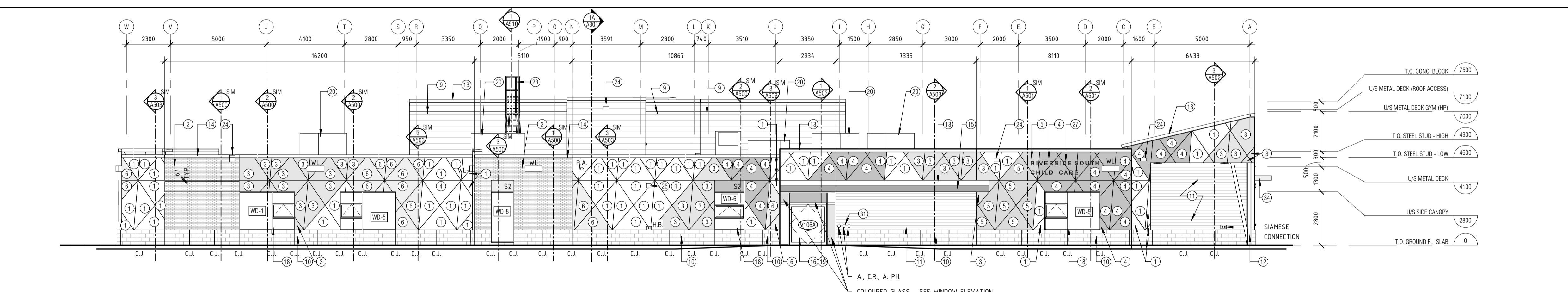
- ELEVATION LEGEND**
- WL WALL MOUNT LIGHT FIXTURE @ 3800mm
  - 25mm LAMINATE PANEL REVEAL (TYP.)
  - 67mm CONTINUOUS RECESSED BRICK BAND
  - S1 SPANDREL PANEL - COLOUR 1
  - S2 SPANDREL PANEL - COLOUR 2
  - C.J. CONTROL JOINT  
-MAX. 6.1m @ BRICK  
-MAX. 1.6m @ ARCH. BLOCK
  - P.A. P.A. HORN - SEE ELECT.  
MOUNT @ 4000mm
  - H.B. HOSE BIB CONNECTION - SEE MECHANICAL
  - A. AUTO OPERATOR
  - C.R. CARD READER
  - A.P.H. AI PHONE



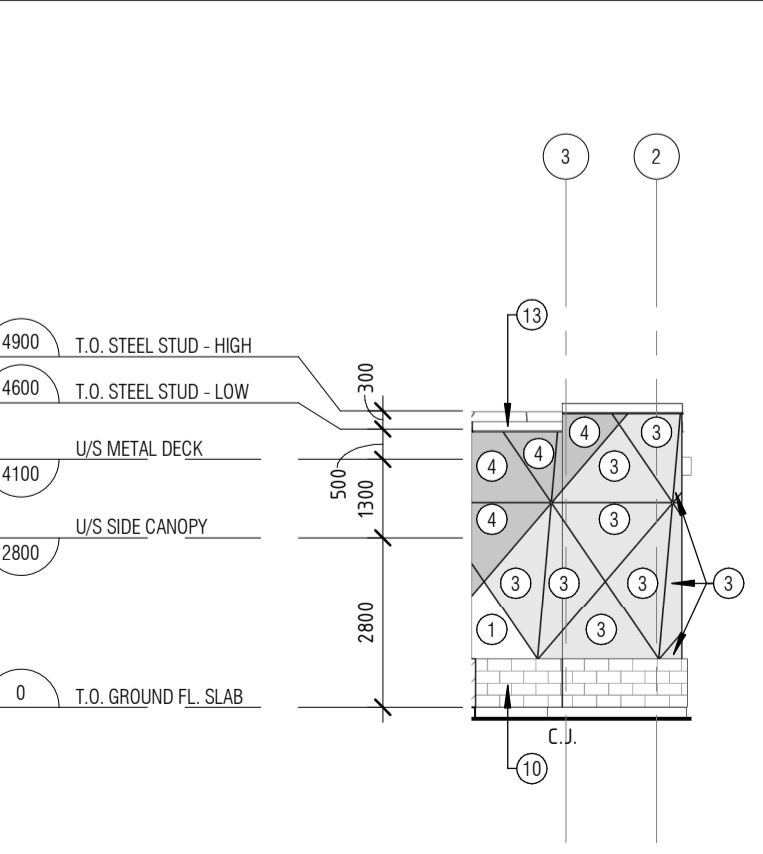
1A SOUTH ELEVATION-PART A  
A201 1:125



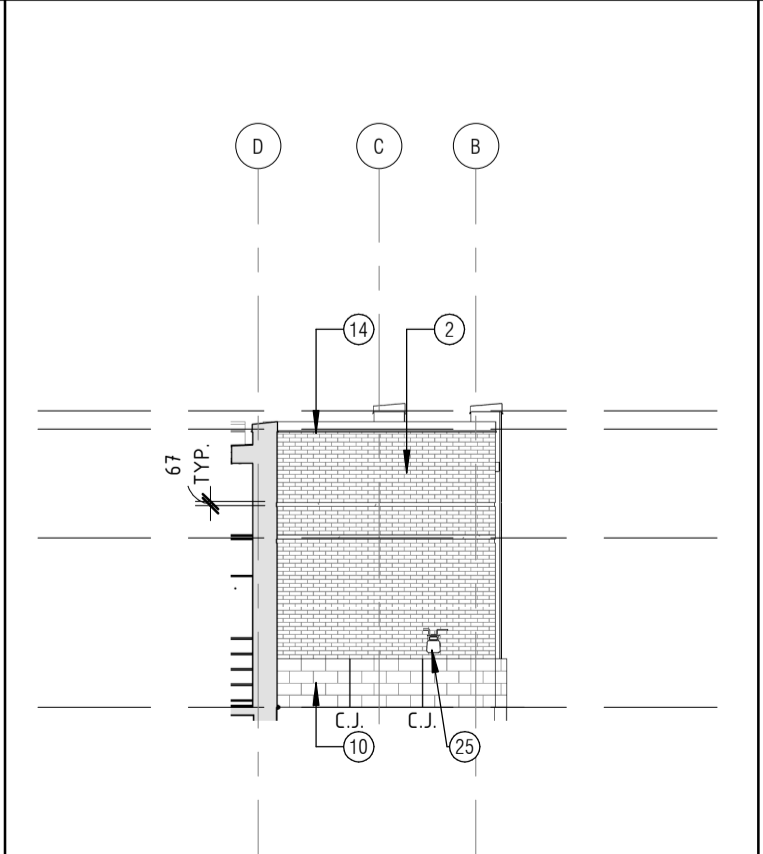
1B SOUTH ELEVATION-PART B  
A201 1:125



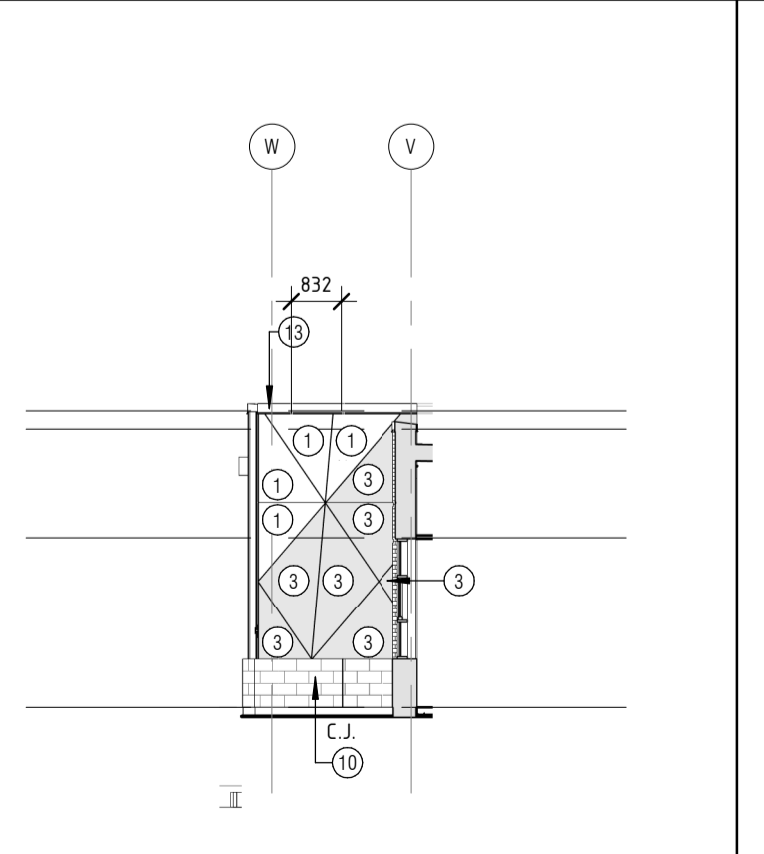
2 WEST ELEVATION  
A201 1:125



3 PARTIAL SOUTH ELEVATION 1  
A201 1:125



4 PARTIAL WEST ELEVATION 1  
A201 1:125



1 PARTIAL WEST ELEVATION 2  
A201 1:125

2	ISSUED FOR SITE PLAN CONTROL	OCT/07/2022
1	ISSUED FOR 85% REVIEW/CLASS A COST ESTIMATE	OCT/21/2022
REV	REVISION DESCRIPTION	DATE

THIS DRAWING IS THE EXCLUSIVE PROPERTY OF PYE & RICHARDS - TEMPRANO & YOUNG ARCHITECTS INC. COPYRIGHT RESERVED

CONTRACTOR TO VERIFY ALL DIMENSIONS AND NOTIFY THE ARCHITECT OF ANY DIMENSIONAL ERRORS AND/OR POSSIBLE TRADE INTERFERENCE/CONFLICT FOR CLARIFICATION PRIOR TO COMMENCEMENT OF THE WORK. DO NOT SCALE DRAWINGS.

SEAL PROJECT NORTH

Not for construction unless SEALED and SIGNED

**P R** PYE & RICHARDS -  
**T Y** TEMPRANO & YOUNG  
ARCHITECTS INC.

824 Meath St. Suite 200 613.724.7700  
Ottawa, ON K1Z 6E8 info@prty.ca

PROJECT  
**OCSB RIVERSIDE SOUTH ELEMENTARY SCHOOL**

836 SARLARIUM AVENUE OTTAWA, ONTARIO

DRAWING  
**BUILDING ELEVATIONS**

PROJECT NO.	22022	DRAWING NO.	<b>A201</b>
SCALE -	AS NOTED		
DRAWN -	YC, DL		
CHECKED -	IR		
PLOT DATE -	OCT/07/2022	PLOTTED BY -	

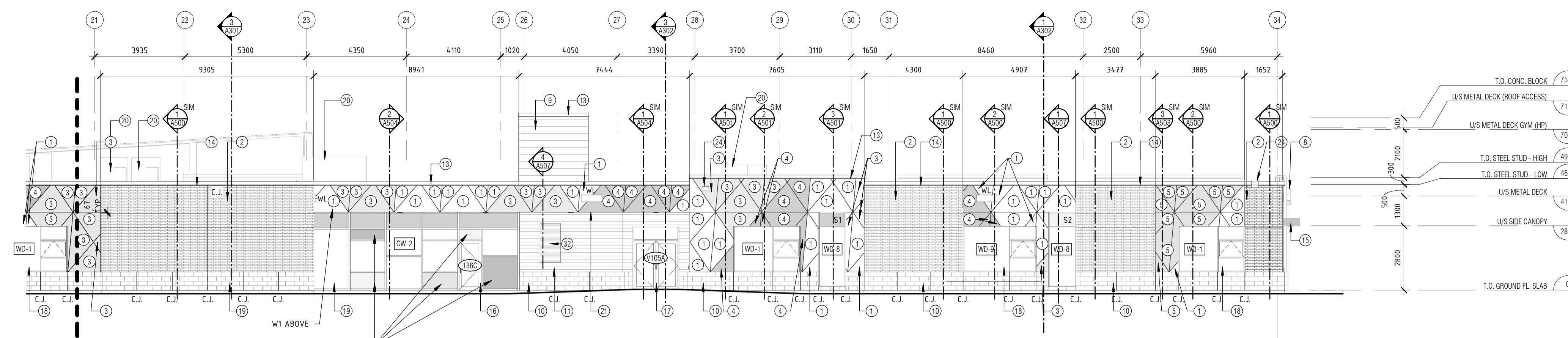


OTTAWA CATHOLIC SCHOOL BOARD

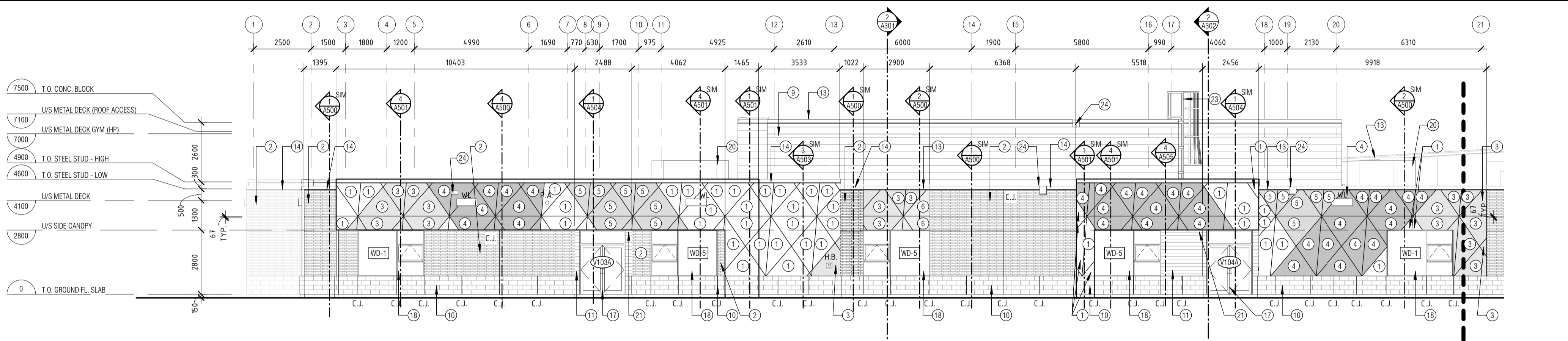
570 WEST HUNT CLUB, NEPEAN, ON. (613)-224-4455

ELEVATION NOTES

- 1 HIGH PRESSURE LAMINATE - FINISH 1 (OFF-WHITE)
- 2 GREY BRICK - FINISH 2
- 3 HIGH PRESSURE LAMINATE - FINISH 3 (YELLOW)
- 4 HIGH PRESSURE LAMINATE - FINISH 4 (GREY)
- 5 HIGH PRESSURE LAMINATE - FINISH 5 (BLUE)
- 6 HIGH PRESSURE LAMINATE - FINISH 6 (LIME)
- 7 RESERVE
- 8 SIGNAGE (CASH ALLOWANCE)
- 9 PRE-FINISHED HORIZONTAL METAL CLADDING - FINISH 9
- 10 CONCRETE BLOCK - FINISH 10
- 11 ALUMINUM HORIZONTAL CLADDING - FINISH 11 (WOOD TEXTURE)
- 12 GALVANIZED STEEL COLUMN - FINISH 12
- 13 PRE-FINISHED METAL FLASHING - FINISH 13 (TO MATCH WHITE LAMINATE PANEL)
- 14 PRE-FINISHED METAL FLASHING - FINISH 14 (TO MATCH GREY BRICK)
- 15 HIGH PRESSURE LAMINATE - FINISH 15 (WHITE)
- 16 ALUMINUM ENTRANCE FRAMING
- 17 PRESSED STEEL FRAME (PAINTED) & HOLLOW METAL DOOR
- 18 ALUMINUM WINDOW FRAMING
- 19 ALUMINUM CURTAIN WALL FRAMING
- 20 ROOF TOP UNIT - SEE MECH.
- 21 ALUMINUM SOFFIT (WOOD TEXTURE)
- 22 RESERVE
- 23 ROOF ACCESS LADDER C/W CAGE
- 24 SCUPPER (PRE-FINISHED METAL)
- 25 GAS METER - SEE MECHANICAL
- 26 AIR INTAKE WALL BOX - SEE MECHANICAL
- 27 300mm HT. CLEAR ANODIZED LETTERING - SEE CASH ALLOWANCE
- 28 200mm HT. CLEAR ANODIZED LETTERING - SEE CASH ALLOWANCE
- 29 BACK LIT CROSS - SEE ELECTRICAL
- 30 ENCLOSURE FOR TEMPORARY GENERATOR OUTLET - SEE ELECTRICAL
- 31 SPRAY FOAM & CAULK @ PENETRATION
- 32 LINE UP & SPACE EQUAL @ PHONE, CARD READER & AUTO DOOR OPERATOR @ 100mm HT.
- 33 INTAKE LOUVRE - SEE MECH. COLOUR TO MATCH CEDAR WOOD FINISH.
- 34 ALUMINUM FRAMING WITH TRANSLUCENT GLAZING PANEL
- 35 ALUMINUM SUN SHADES

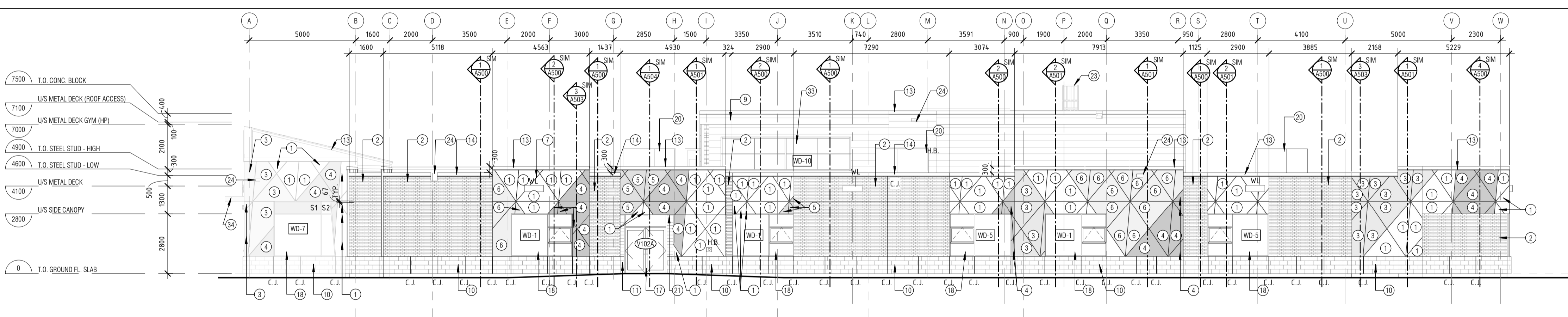


1A NORTH ELEVATION-PART A  
A202 1:125

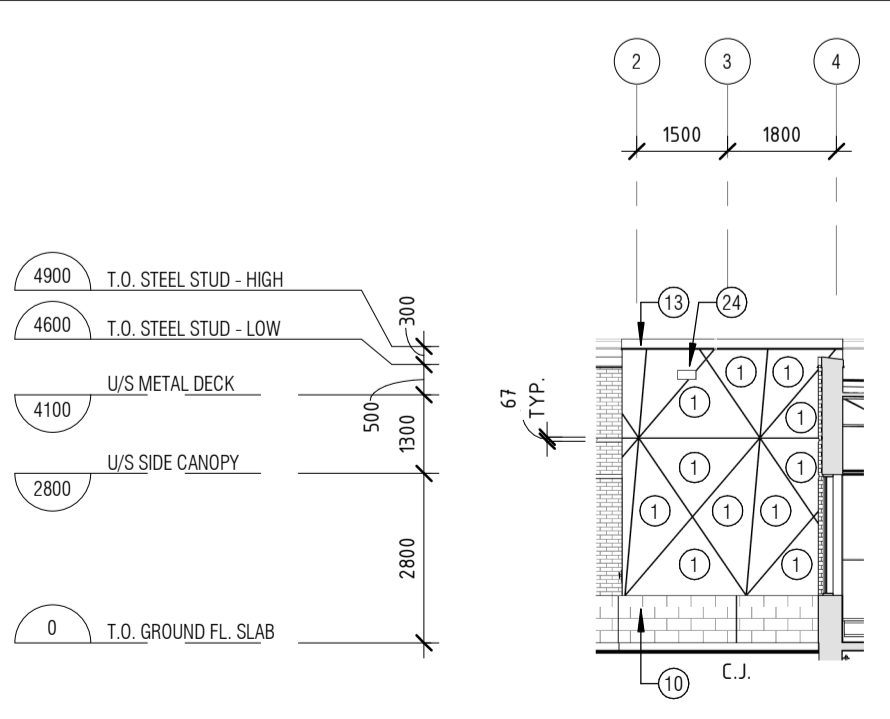


1B NORTH ELEVATION-PART B  
A202 1:125

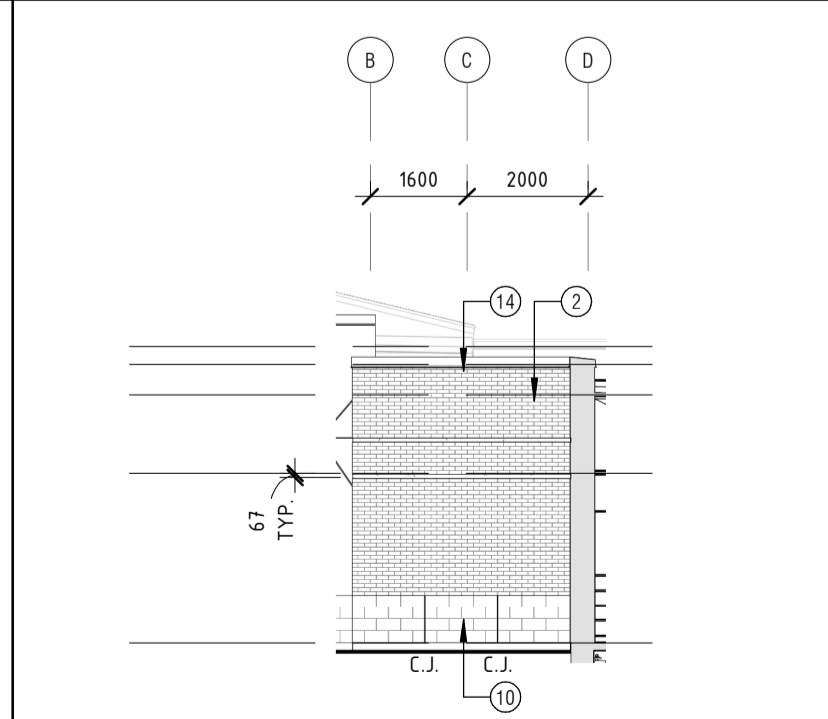
- ELEVATION LEGEND**
- W.L. WALL MOUNT LIGHT FIXTURE @ 380mm
  - 25mm LAMINATE PANEL REVEAL (TYP.)
  - 67mm CONTINUOUS RECESSED BRICK BAND
  - S1 SPANDREL PANEL - COLOUR 1
  - S2 SPANDREL PANEL - COLOUR 2
  - C.J. CONTROL JOINT  
-MAX. 6.1m @ BRICK  
-MAX. 1.6m @ ARCH. BLOCK
  - P.A. P.A. HORN - SEE ELECT.  
MOUNT @ 4000mm
  - H.B. HOSE BIB CONNECTION - SEE MECHANICAL
  - A. AUTO OPERATOR
  - C.R. CARD READER
  - A.P.H. AI PHONE



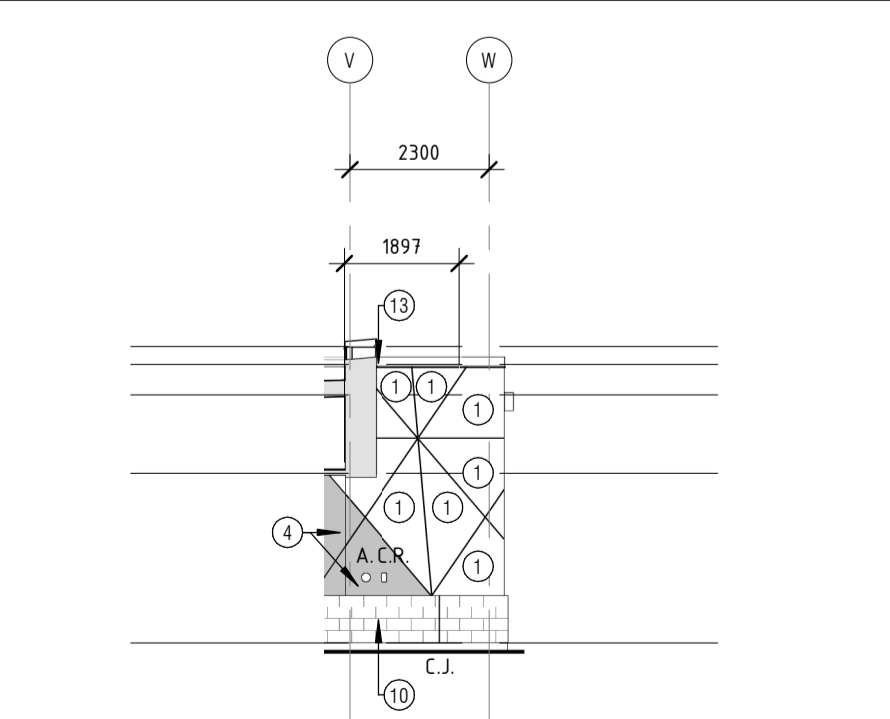
2 EAST ELEVATION  
A202 1:125



3 PARTIAL NORTH ELEVATION 1  
A202 1:125



1 PARTIAL EAST ELEVATION 1  
A202 1:125



4 PARTIAL EAST ELEVATION 2  
A202 1:125

2	ISSUED FOR SITE PLAN CONTROL	OCT/07/2022
1	ISSUED FOR 85% REVIEW/CLASS A COST ESTIMATE	OCT/21/2022
REV	REVISION DESCRIPTION	DATE

THIS DRAWING IS THE EXCLUSIVE PROPERTY OF PYE & RICHARDS - TEMPRANO & YOUNG ARCHITECTS INC. COPYRIGHT RESERVED

CONTRACTOR TO VERIFY ALL DIMENSIONS AND NOTIFY THE ARCHITECT OF ANY DIMENSIONAL ERRORS AND/OR POSSIBLE TRADE INTERFERENCE/CONFLICT FOR CLARIFICATION PRIOR TO COMMENCEMENT OF THE WORK. DO NOT SCALE DRAWINGS.

SEAL PROJECT NORTH

Not for construction unless SEALED and SIGNED

**P R** PYE & RICHARDS -  
**T Y** TEMPRANO & YOUNG  
ARCHITECTS INC.

824 Meath St. Suite 200 613. 724. 7700  
Ottawa, ON K1Z 6E8 info@prty.ca

PROJECT  
**OCSB RIVERSIDE SOUTH ELEMENTARY SCHOOL**

836 SOLARIUM AVENUE OTTAWA, ONTARIO

DRAWING  
**BUILDING ELEVATIONS**

PROJECT NO.	22022	DRAWING NO.	<b>A202</b>
SCALE -	AS NOTED		
DRAWN -	YC, DL		
CHECKED -	IR		
PLOT DATE -	OCT/07/2022	PLOTTED BY -	

SHEET SIZE: A1