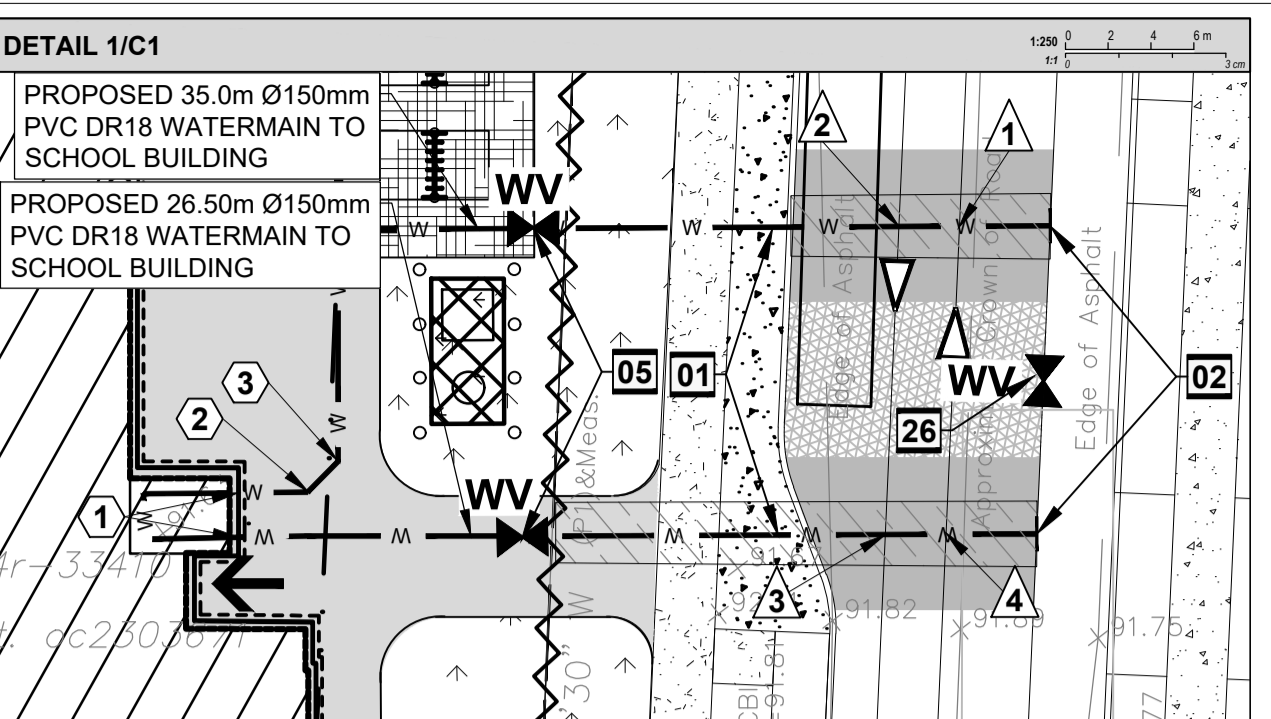


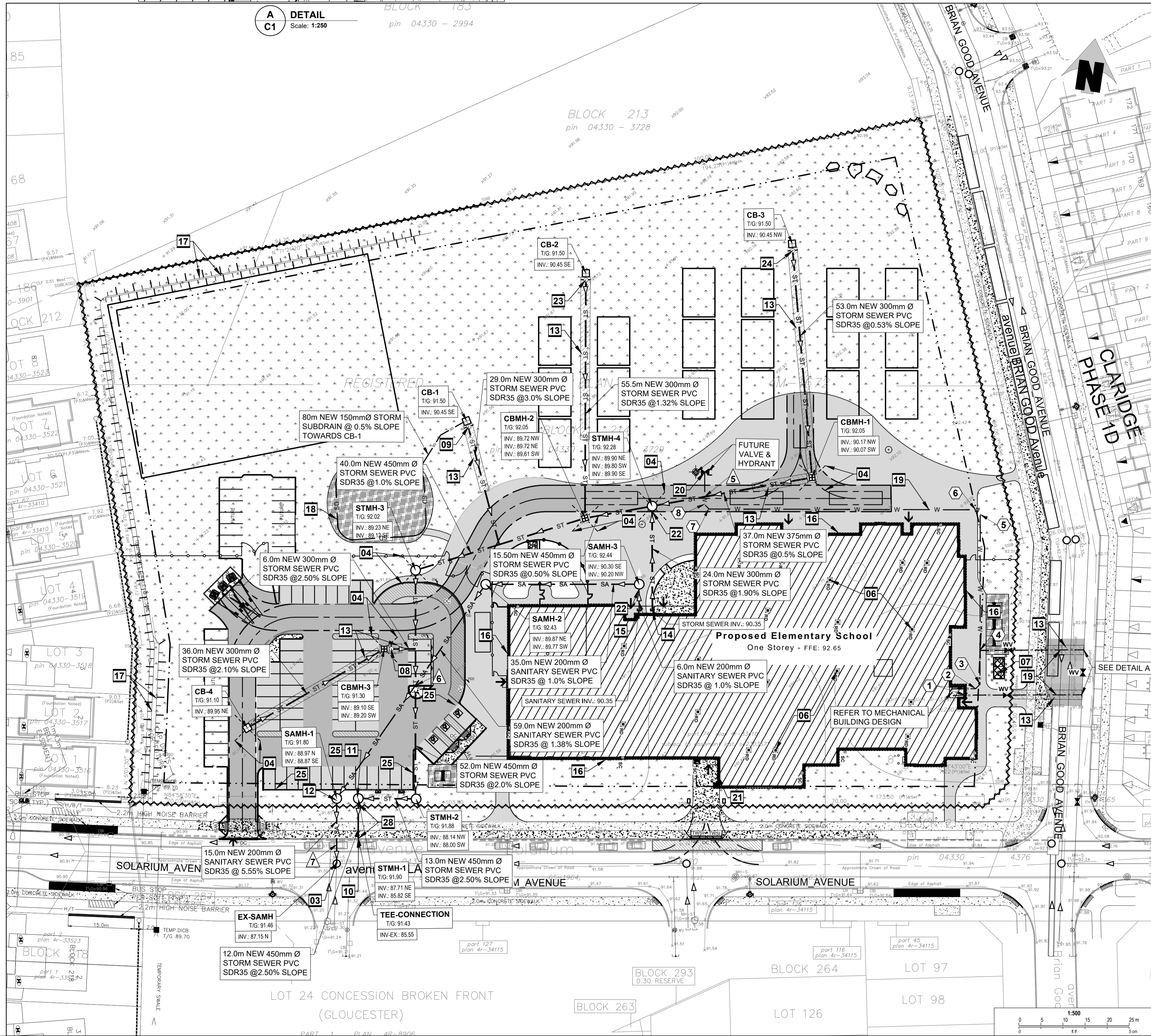
LEGEND	
	PROPERTY LINE
	EXISTING BUILDING
	DEPRESSED CURB
	BREAK OF SLOPE - NEW
	NEW FENCE
	EXISTING SANITARY SEWER
	EXISTING STORM SEWER
	EXISTING WATERMAIN
	NEW SANITARY SEWER
	NEW STORM SEWER
	NEW WATERMAIN
	NEW SILT FENCE
	SWALE
	BERM
	NEW LIGHT DUTY ASPHALT
	NEW HEAVY DUTY ASPHALT
	NEW CONCRETE SIDEWALK
	NEW GRASS
	NEW REINFORCED GRASS
	NEW INSULATION
	MILLING & OVERLAY 50mm THICK HEAVY DUTY ASPHALT AS PER CITY SPECS
	NEW GRAVEL
	NEW MULCH
	SEE SHEET NUMBER "CS"
	EXISTING CATCHBASIN
	EXISTING MANHOLES
	NEW CATCHBASIN
	NEW CATCHBASIN MANHOLE
	NEW SANITARY MANHOLE
	NEW STORM MANHOLE
	NEW WATER VALVE
	NEW INLET CONTROL DEVICE
	NEW ROOF DRAIN
	NEW SCUPPER
	NEW SIAMESE CONNECTION

- GENERAL NOTES**
- DESIGN AND CONSTRUCTION IS TO BE IN ACCORDANCE WITH MOST RECENT ONTARIO BUILDING CODE.
 - THE CONTRACTOR IS RESPONSIBLE FOR CHECKING AND VERIFYING ALL DIMENSIONS WITH RESPECT TO SITE CONDITIONS AND ALL MATERIALS TO THE PROJECT. ANY DISCREPANCY SHALL BE REPORTED TO THE ENGINEER.
 - THIS DRAWING IS TO BE READ IN CONJUNCTION WITH ALL MATERIAL RELEVANT TO THE PROJECT.
 - ADDITIONAL DRAWINGS MAY BE ISSUED FOR CLARIFICATION TO ASSIST PROPER EXECUTION OF WORK. SUCH DRAWINGS WILL HAVE THE SAME MEANING AND INTENT AS IF THEY WERE INCLUDED WITH THE CONTRACT DOCUMENTS.
 - CONTRACTOR MUST COMPLY WITH LOCAL BY-LAWS, ONTARIO OCCUPATIONAL HEALTH AND SAFETY ACT AND ALL REGULATIONS SET BY AUTHORITIES HAVING JURISDICTION. IN CASE OF CONFLICT OR DISCREPANCY, THE MORE STRINGENT REQUIREMENTS SHALL APPLY.
 - CONTRACTOR RESPONSIBLE FOR OBTAINING ALL REQUIRED UTILITY LOCATES, DAYLIGHTING, INSPECTIONS, PERMITS, AND APPROVALS INCLUDING ALL ASSOCIATED COSTS. LOCATION OF EXISTING UTILITIES ARE APPROXIMATE ONLY AND BASED ON BEST AVAILABLE INFORMATION.



DRAWING NOTES

- SUPPLY AND INSTALL NEW 2x150mm Ø PVC DR18 WATER MAIN SERVICE, MINIMUM 2.4m COVER, OTHERWISE PROVIDE H40 THERMAL INSULATION IN ACCORDANCE WITH CITY OF OTTAWA STANDARD DETAIL DRAWING W22. CONTRACTOR SHALL BE RESPONSIBLE FOR OBTAINING AND PAYING FOR A WATER PERMIT FROM THE CITY OF OTTAWA FOR INSPECTION, DISINFECTION (CHLORINATION) AND TESTING. COORDINATE NEW WATER SERVICE CONNECTION WITH MECHANICAL PLANS.
- INSTALLATION OF NEW SERVICE CONNECTION TEE 2x150mm Ø PVC TO EXISTING MUNICIPAL WATERMAIN TO BE COMPLETED BY CITY OF OTTAWA FORCES. EXCAVATION, BACKFILL AND RE-INSTATEMENT BY CONTRACTOR.
- CONTRACTOR TO CONFIRM INVERT LEVEL IN EXISTING SANITARY MANHOLE.
- INSTALL FOUR WAY 3.0m LONG 100mm Ø PERFORATED SUBDRAIN WRAPPED IN GEOTEXTILE SOCK EXTENDING FROM CB/CBMH AT PAVEMENT SUBGRADE LEVEL. PROVIDE WATER TIGHT CONNECTION.
- SUPPLY AND INSTALL NEW 150mm WATER VALVE AT PROPERTY LINE. VALVEBOX ASSEMBLY AS PER CITY OF OTTAWA STANDARD DETAIL DRAWING W24 AND W50.
- SUPPLY AND INSTALL WATTS ROOF DRAIN CONTROLS TO BE INSTALLED ON ROOF DRAINS. MAXIMUM DISCHARGE 38.69 l/s TOTAL. MAXIMUM ROOF PONDING DEPTH 0.15m. REFER TO MECHANICAL FOR SPECIFIC WEIR SETTINGS. 5 YEAR PONDING VOLUME: 53m³, 100 YEAR PONDING VOLUME: 146m³.
- NEW TRANSFORMER AND BOLLARDS.
- SUPPLY AND INSTALL NEW INLET CONTROL DEVICE FLOW REGULATOR AT CATCHBASIN MANHOLE. CBMH-3 OUTLET. MAXIMUM DISCHARGE 86.40 l/s AT 2.10m HEAD AND ORIFICE DIAMETER AT 160mm.
- SUPPLY AND INSTALL NEW INLET CONTROL DEVICE FLOW REGULATOR AT CATCHBASIN. CB-1 OUTLET. MAXIMUM DISCHARGE 33.00 l/s AT 1.10m HEAD AND ORIFICE DIAMETER AT 122mm.
- CONTRACTOR TO CONFIRM INVERT LEVEL IN EXISTING STORM SEWER.
- INSTALL NEW MONITORING STORM MANHOLE. STMH-1 AND 450mm Ø STORM SEWER PIPE TO CONNECT THE EXISTING 2400MM STORM SEWER.
- INSTALL NEW MONITORING SANITARY MANHOLE SAMH-1 AND 200mm Ø SANITARY SEWER PIPE TO CONNECT THE EXISTING SANITARY MANHOLE.
- PROVIDE 100mm HIGH LOAD RIGID INSULATION PLACED WITHIN SUBGRADE. INSULATION SHALL BE 2.0m WIDE ABOVE PIPE WHERE INDICATED.
- CONNECT STORM SEWER TO BUILDING AT INVERT 90.35.
- CONNECT SANITARY SEWER TO BUILDING AT INVERT 90.35.
- NEW PERIMETER FOUNDATION DRAINAGE (REFER TO ARCHITECTURAL) TO BE CONNECTED TO THE NEW STORM SEWER.
- EDGE BERM.
- SUPPLY AND INSTALL NEW 250mm Ø PERFORATED DRAIN PIPE c/w FILTER SOCK AS PER CITY DETAIL S9. CONNECT SUBDRAIN TO CBMH-3. PROVIDE WATER TIGHT CONNECTION.
- ALL WATERMAIN SHALL BE PROVIDED WITH TRACER WIRE AS PER CITY OF OTTAWA STANDARD DETAILS AND SPECIFICATIONS.
- INSTALL UNDERGROUND CAP WITH METAL BOX FOR CONNECTION TO THE FUTURE FIRE HYDRANT VALVE.
- NEW SIAMESE CONNECTION.
- SUPPLY AND INSTALL BACKFLOW VALVES ON SANITARY AND STORM BUILDING CONNECTION AS PER CITY OF OTTAWA REQUIREMENT. CONTRACTOR TO PROVIDE SHOP DRAWINGS FOR PROPLEX PROCO 790 DUCK BILL TYPE AS FOLLOWS:
 - SANITARY BACKWATER VALVE, 8" SIZE (200mm).
 - STORM BACKWATER VALVE, 12" SIZE (300mm).
 - VALVE CLAMP LOCATIONS AT DISCHARGE.
- SUPPLY AND INSTALL NEW INLET CONTROL DEVICE FLOW REGULATOR AT CATCHBASIN. CBM-3 OUTLET. MAXIMUM DISCHARGE 16.40 l/s AT 1.12m HEAD AND ORIFICE DIAMETER AT 85mm.
- SUPPLY AND INSTALL NEW INLET CONTROL DEVICE FLOW REGULATOR AT CATCHBASIN. CB-3 OUTLET. MAXIMUM DISCHARGE 18.40 l/s AT 1.16m HEAD AND ORIFICE DIAMETER AT 90mm.
- SUBDRAINS SHOULD BE INSTALLED ON THE SIDES OF THE ACCESS ROAD AND PARKING AREA. SEE GEOTECHNICAL NOTES AND REFER TO GEOTECHNICAL REPORT.
- SUPPLY AND INSTALL NEW 300MM WATER VALVE AS PER CITY OF OTTAWA STANDARD DETAILS.



Jp2g Consultants Inc.
 ENGINEERS - PLANNERS - PROJECT MANAGERS
 1150 Morrison Drive, Suite 410, Ottawa, ONT.
 Phone: (613) 828-7800 Fax: (613) 828-2900
 Jp2g No.: 20-1095D



1	ISSUED FOR SITE PLAN CONTROL REV-1	2022-10-10
No.	Description	YYYY-MM-DD



Client: **P R PYE & RICHARDS - TEMPRANO & YOUNG ARCHITECTS INC.**
 824 Meath St. Suite 200 613.724.7700
 Ottawa, ON K1Z 6E8 info@prty.ca

Project: **OCSB Riverside South Elementary School**
 Solarium & Brian Good, Ottawa, Ontario

Drawing Title: **Site Servicing Plan**

Do not scale. Refer any dimensional errors and/or possible trade interference/conflict to the architect for clarification prior to commencement of the work. The conditions of the contract apply.

Project No.	Drawing No.
Scale: As shown	C1
Drawn By: R.I.	
Checked: A.S.	
Date	Revision No.