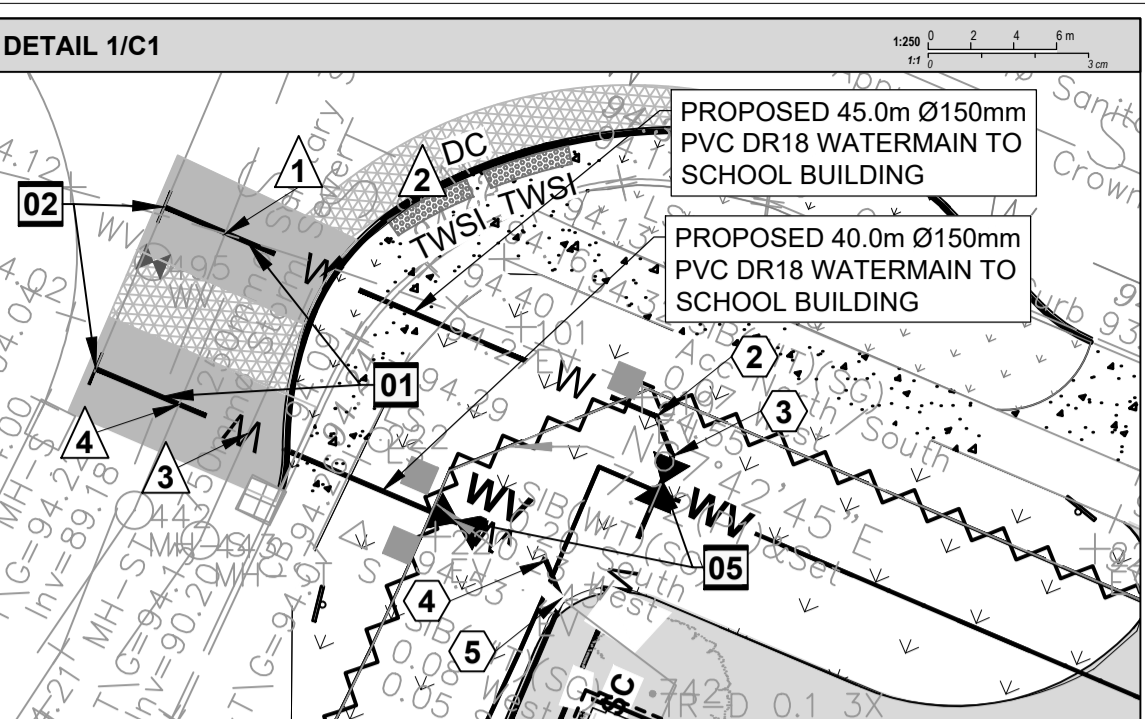


**LEGEND**

- PROPERTY LINE
- ▨ EXISTING BUILDING
- ▬ DEPRESSED CURB
- ▬ BREAK OF SLOPE - NEW
- NEW FENCE
- EXISTING SANITARY SEWER
- EXISTING STORM SEWER
- EXISTING WATERMAIN
- NEW SANITARY SEWER
- NEW STORM SEWER
- NEW WATERMAIN
- NEW SILT FENCE
- ▨ SWALE
- ▨ BERM
- ▨ NEW LIGHT DUTY ASPHALT
- ▨ NEW HEAVY DUTY ASPHALT
- ▨ NEW CONCRETE SIDEWALK
- ▨ NEW GRASS
- ▨ NEW REINFORCED GRASS
- ▨ NEW INSULATION MILLING & OVERLAY 50mm THICK HEAVY DUTY ASPHALT AS PER CITY SPECS
- ▨ NEW GRAVEL
- ▨ NEW MULCH
- ⊕ SEE SHEET NUMBER "CS"
- ⊕ EX-CB EXISTING CATCHBASIN
- ⊕ EX-MH EXISTING MANHOLES
- ⊕ CB-# NEW CATCHBASIN
- ⊕ CIBC NEW CURB INLET CATCHBASIN
- ⊕ CBMH-# NEW CATCHBASIN MANHOLE
- ⊕ SAMH-# NEW SANITARY MANHOLE
- ⊕ STMH-# NEW STORM MANHOLE
- ⊕ MW NEW WATER VALVE
- ⊕ ND NEW INLET CONTROL DEVICE
- ⊕ RD NEW ROOF DRAIN
- ⊕ SC NEW SCUPPER
- ⊕ SMC NEW SIAMSESE CONNECTION

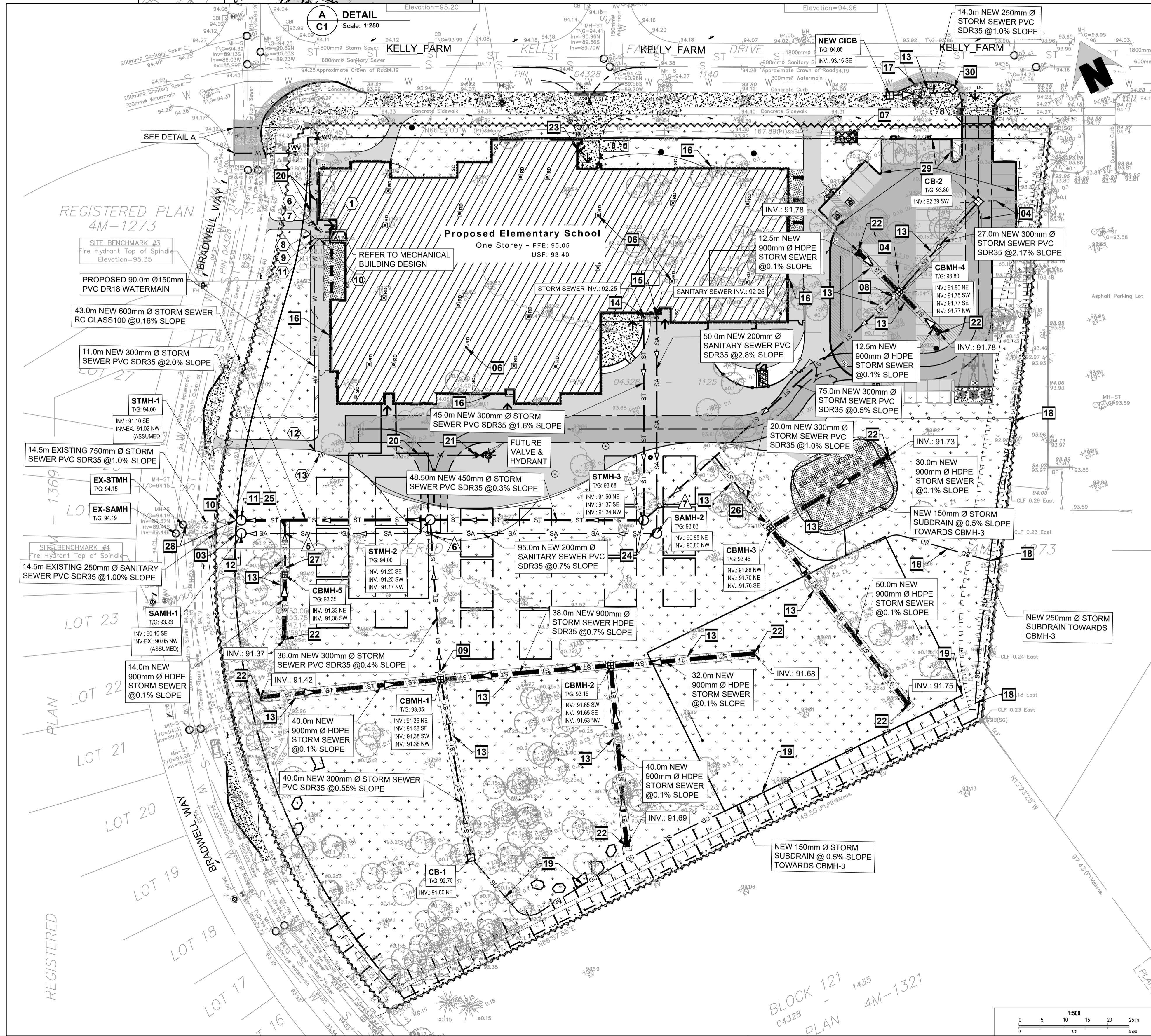
**GENERAL NOTES**

- DESIGN AND CONSTRUCTION IS TO BE IN ACCORDANCE WITH MOST RECENT ONTARIO BUILDING CODE.
- THE CONTRACTOR IS RESPONSIBLE FOR CHECKING AND VERIFYING ALL DIMENSIONS WITH RESPECT TO SITE CONDITIONS AND ALL MATERIALS TO THE PROJECT. ANY DISCREPANCY SHALL BE REPORTED TO THE ENGINEER.
- THIS DRAWING IS TO BE READ IN CONJUNCTION WITH ALL MATERIAL RELEVANT TO THE PROJECT.
- ADDITIONAL DRAWINGS MAY BE ISSUED FOR CLARIFICATION TO ASSIST PROPER EXECUTION OF WORK. SUCH DRAWINGS WILL HAVE THE SAME MEANING AND INTENT AS IF THEY WERE INCLUDED WITH THE CONTRACT DOCUMENTS.
- CONTRACTOR MUST COMPLY WITH LOCAL BY-LAWS, ONTARIO OCCUPATIONAL HEALTH AND SAFETY ACT AND ALL REGULATIONS SET BY AUTHORITIES HAVING JURISDICTION. IN CASE OF CONFLICT OR DISCREPANCY, THE MORE STRINGENT REQUIREMENTS SHALL APPLY.
- CONTRACTOR RESPONSIBLE FOR OBTAINING ALL REQUIRED UTILITY LOCATES, DAYLIGHTING, INSPECTIONS, PERMITS, AND APPROVALS INCLUDING ALL ASSOCIATED COSTS. LOCATION OF EXISTING UTILITIES ARE APPROXIMATE ONLY AND BASED ON BEST AVAILABLE INFORMATION.



**DRAWING NOTES**

- SUPPLY AND INSTALL NEW 2x150mm Ø PVC DR18 WATER MAIN SERVICE, MINIMUM 2.4m COVER, OTHERWISE PROVIDE R4.0 THERMAL INSULATION IN ACCORDANCE WITH CITY OF OTTAWA STANDARDS DETAIL DRAWING W22. CONTRACTOR SHALL BE RESPONSIBLE FOR OBTAINING AND PAYING FOR A WATER PERMIT FROM THE CITY OF OTTAWA FOR INSPECTION, DISINFECTION (CHLORINATION) AND TESTING. COORDINATE NEW WATER SERVICE CONNECTION WITH MECHANICAL PLANS.
- INSTALLATION OF NEW SERVICE CONNECTION TEE 2x150mm Ø PVC TO EXISTING MUNICIPAL WATERMAIN TO BE COMPLETED BY CITY OF OTTAWA FORCES. EXCAVATION, BACKFILL AND REINSTATEMENT BY CONTRACTOR.
- EXISTING SANITARY STUB APPROXIMATE INVERT: 90.05 INVERTS TO BE CONFIRMED BY CONTRACTOR PRIOR TO CONSTRUCTION. CONTRACTOR TO PROVIDE UNDERGROUND UTILITY LOCATES BY DAYLIGHTING PRIOR TO CONSTRUCTION SHOULD THERE BE ANY DISCREPANCY OF EXISTING TOPOGRAPHIC INFORMATION. CONTRACTOR TO INFORM CONSULTANT ACCORDINGLY.
- INSTALL FOUR WAY 3.0m LONG 100mm Ø PERFORATED SUBDRAIN WRAPPED IN GEOTEXTILE SOCK EXTENDING FROM CB/CBMH AT PAVEMENT SUBGRADE LEVEL. PROVIDE WATER TIGHT CONNECTION.
- SUPPLY AND INSTALL NEW 150mm WATER VALVE AT PROPERTY LINE. VALVEBOX ASSEMBLY AS PER CITY OF OTTAWA STANDARD DETAIL DRAWING W24 AND W50.
- SUPPLY AND INSTALL WATTS ROOF DRAIN CONTROLS TO BE INSTALLED ON ROOF DRAINS. MAXIMUM DISCHARGE 138.89 IN TOTAL. MAXIMUM ROOF PONDING DEPTH 0.15m. REFER TO MECHANICAL FOR SPECIFIC WEIR SETTINGS. 5-YEAR PONDING VOLUME: 53m<sup>3</sup>. 100 YEAR PONDING VOLUME: 146m<sup>3</sup>.
- NEW TRANSFORMER AND BOLLARDS.
- SUPPLY AND INSTALL NEW INLET CONTROL DEVICE FLOW REGULATOR AT CATCHBASIN MANHOLE. CBMH-4 OUTLET. MAXIMUM DISCHARGE 34.7 l/s AT 2.15m HEAD AND ORIFICE DIAMETER AT 106mm.
- SUPPLY AND INSTALL NEW INLET CONTROL DEVICE FLOW REGULATOR AT CATCHBASIN MANHOLE. CBMH-1 OUTLET. MAXIMUM DISCHARGE 52.05 l/s AT 1.49m HEAD AND ORIFICE DIAMETER AT 142mm.
- EXISTING STORM STUB APPROXIMATE INVERT: 91.02 INVERTS TO BE CONFIRMED BY CONTRACTOR PRIOR TO CONSTRUCTION. CONTRACTOR TO PROVIDE UNDERGROUND UTILITY LOCATES BY DAYLIGHTING PRIOR TO CONSTRUCTION.
- INSTALL NEW STORM MANHOLE. STMH-1 AND 600mm Ø STORM SEWER PIPE TO CONNECT THE EXISTING 750mm Ø STUB. PROVIDE WATER TIGHT CONNECTION.
- INSTALL NEW SANITARY MANHOLE SAMH-1 AND 200mm Ø SANITARY SEWER PIPE TO CONNECT THE EXISTING 250mm Ø STUB. PROVIDE WATER TIGHT CONNECTION.
- PROVIDE 100mm HIGH LOAD RIGID INSULATION PLACED WITHIN SUBGRADE. INSULATION SHALL BE 2.0m WIDE ABOVE PIPE WHERE INDICATED.
- CONNECT STORM SEWER TO BUILDING AT INVERT 92.25.
- CONNECT SANITARY SEWER TO BUILDING AT INVERT 92.25.
- NEW PERIMETER FOUNDATION DRAINAGE (REFER TO ARCHITECTURAL) TO BE CONNECTED TO THE NEW STORM SEWER.
- RAISE EXISTING VALVE LEVEL TO NEW CURB LEVEL.
- SUPPLY AND INSTALL NEW 250mm Ø PERFORATED DRAIN PIPE c/w FILTER SOCK AS PER CITY DETAIL S9. CONNECT SUBDRAIN TO CBMH-3. PROVIDE WATER TIGHT CONNECTION.
- SUPPLY AND INSTALL NEW 150mm Ø PERFORATED DRAIN PIPE c/w FILTER SOCK. CONNECT PLAY AREA SUBDRAIN TO CB-1. PROVIDE WATER TIGHT CONNECTION.
- ALL WATERMAIN SHALL BE PROVIDED WITH TRACER WIRE AS PER CITY OF OTTAWA STANDARD DETAILS AND SPECIFICATIONS.
- INSTALL UNDERGROUND CAP WITH METAL BOX FOR CONNECTION TO THE FUTURE FIRE HYDRANT VALVE.
- SUPPLY AND INSTALL NEW 900mm Ø HDPE STORMWATER STORAGE PIPE COMPLETE WITH NEW 900mm Ø CAP.
- NEW SIAMSESE CONNECTION.
- SUPPLY AND INSTALL BACKFLOW VALVES ON SANITARY AND STORM BUILDING CONNECTION AS PER CITY OF OTTAWA REQUIREMENT. CONTRACTOR TO PROVIDE SHOP DRAWINGS FOR PROFLEX PROCO 790 DUCK BILL TYPE AS FOLLOWS:
  - SANITARY BACKWATER VALVE, 8" SIZE (200mm).
  - STORM BACKWATER VALVE, 12" SIZE (300mm).
  - VALVE CLAMP LOCATIONS AT DISCHARGE.
- NEW MONITORING MANHOLE.
- SUPPLY AND INSTALL NEW INLET CONTROL DEVICE FLOW REGULATOR AT CATCHBASIN MANHOLE. CBMH-3 OUTLET. MAXIMUM DISCHARGE 17.35 l/s AT 0.82m HEAD AND ORIFICE DIAMETER AT 99mm.
- SUPPLY AND INSTALL NEW INLET CONTROL DEVICE FLOW REGULATOR AT CATCHBASIN MANHOLE. CBMH-4 OUTLET. MAXIMUM DISCHARGE 17.35 l/s AT 0.79m HEAD AND ORIFICE DIAMETER AT 96mm.
- CONTRACTOR TO CONFIRM INVERTS IN EXISTING STORM MANHOLE AS FOLLOWS:
  - S = 90.87, N = 90.43, E-STUB-OUT = 90.45
- CONTRACTOR TO CONFIRM THE STORM STUB-OUT SLOPE AT 1% CONNECTING TO STMH-1 AT INVERT 90.60. SHOULD THESE BE ANY DISCREPANCY OF EXISTING TOPOGRAPHIC INFORMATION. CONTRACTOR TO INFORM CONSULTANT ACCORDINGLY.
- SUBDRAINS SHOULD BE INSTALLED ON THE SIDES OF THE ACCESS ROAD AND PARKING AREA. SEE GEOTECHNICAL NOTES AND REFER TO GEOTECHNICAL REPORT.
- RELOCATE AND ROTATE EXISTING CIBC, MODIFY TO RECEIVE NEW STORM SEWER FROM NEW CIB.



**Jp2g Consultants Inc.**  
ENGINEERS - PLANNERS - PROJECT MANAGERS  
1150 Morrison Drive, Suite 410, Ottawa, ONT.  
Phone: (613) 828-7800 Fax: (613) 828-2900  
Jp2g No.: 20-1095C



1	ISSUED FOR SITE PLAN CONTROL REV-1	2022-10-07
No.	Description	YYYY-MM-DD

Professional Engineer Seal: SAMMOUR 100227665, October 7, 2022, PROVINCE OF ONTARIO

Client: **P R PYE & RICHARDS - TEMPRANO & YOUNG ARCHITECTS INC.**  
824 Meath St. Suite 200 613.724.7700  
Ottawa, ON K1Z 6E8 info@prty.ca

Project: **OCSB Findlay Creek Elementary School**  
4140 Kelly Farm Drive, Ottawa, Ontario

**Site Servicing Plan**

Do not scale. Refer any dimensional errors and/or possible trade interference/conflict to the architect for clarification prior to commencement of the work. The conditions of the contract apply.

Project No.	Drawing No.
Scale: As shown	<b>C1</b>
Drawn By: R.I.	Checked: A.S.
Date	Revision No.