

- MATERIALS LEGEND :**
- ALG aluminum guard - charcoal coloured
 - ALB aluminum window framing - aged-copper coloured
 - ALC aluminum window framing - charcoal coloured
 - CB poured concrete - w/ blasted finish
 - CC poured concrete
 - GL1 glass type 1
 - GL2 glass type 2
 - GL3 glass type 3 - translucent patterned
 - GL4 glass type 4 - translucent
 - M1 metal interlocking tile cladding - dark colour (levels P1, 1 + 8)
 - M2 metal interlocking tile cladding - light colour (penthouse)
 - ML metal louver - colour to match adjacent cladding material
 - OD rubber overhead door
 - PC1 pre-cast concrete panels - colour + finish type 1
 - PC2 pre-cast concrete panels - colour + finish type 2
 - PC3 pre-cast concrete panels - colour + finish type 3
 - PV pre-cast concrete panels - w/ vertical flutes colour + finish type 2
 - SP1 aluminum insulated spandrel panel - aged-copper coloured
 - SP2 aluminum insulated spandrel panel - w/ charcoal coloured louvers
 - SP3 aluminum insulated spandrel panel - with opaque spandrel glass
 - ZF zinc drip flashing

SOUTH ELEVATION
1 : 125

- General Notes:**
- Provide shop drawings for all windows, doors and glazing. Provide engineer's stamp where specified.
 - All windows with sill heights below 1070mm from finished interior floor shall be designed as guards by an engineer. Provide limiters to all of these windows.
 - Window, door and glazing energy performance characteristics shall comply with the SB-10 requirements identified in this drawings package.
 - All balcony guards to be designed by the supplier's engineer. Stamped shop drawings shall be provided to architect.
 - Window numbers marked with suffix " " (eg. W3 ") identify windows assigned for emergency venting in accordance w/ OBC 3.2.6.6. (1), and shall conform to SB-4 sentence [3.2.6.6.(1)] specifications.

Andrew McCreight

ANDREW MCCREIGHT
MANAGER, DEVELOPMENT REVIEW CENTRAL
PLANNING, DEVELOPMENT & BUILDING SERVICES
DEVELOPMENT DEPARTMENT, CITY OF OTTAWA

APPROVED
By Andrew McCreight at 11:48 am, Oct 30, 2025

NORTH ELEVATION
2 : 125



CLIENT / OWNER :
CHURCHILL PROPERTIES INC.
5-145 SELECT AVE.
TORONTO, ON M1V 5M8
416-292-9920

CONSULTING PLANNER :
FOTENN
396 COOPER STREET, SUITE 300
OTTAWA, ON K2P 2H7
613-234-8883

ARCHITECT :
OPEN PLAN ARCHITECTS INC.
340 GLADSTONE AVE., SUITE 301,
OTTAWA, ON K2P 0Y8
613-842-3434

STRUCTURAL ENGINEER :
D + M STRUCTURAL
333 PRESTON STREET, SUITE 110
OTTAWA, ON K1S 5N4
613-651-9490

MECHANICAL ELECTRICAL & CIVIL ENGINEER :
LRL ENGINEERING
5430 CANOTEK ROAD,
OTTAWA, ON K1J 9G2
613-842-3434

LANDSCAPE ARCHITECT :
IBI GROUP
410 ALBERT STREET, SUITE 101
WATERLOO, ON N2L 3V3
519-585-2285

SURVEYOR :
ANNIS, O'SULLIVAN, VOLLEBEKK LTD.
14 CONCOURSE GATE, SUITE 500
OTTAWA, ON K2E 2T6
613-727-0550

NOISE, VIBRATION & WIND ENGINEER :
GRADIENT WIND ENGINEERING
127 WALGREEN ROAD,
OTTAWA, ON K0A 1I0
613-436-0794

TRANSPORTATION ENGINEER :
CASTLEGLAN CONSULTANTS INC.
2460 LANCASTER ROAD,
OTTAWA, ON K1B 4S5
613-731-4622

| rev. / issue | description | date |
|--------------|---|---------------|
| 06 | Issued for Site Plan Application - 6th round comments | 23 Sep. 2025 |
| 05 | Issued for shop drawings | 23 Sep. 2025 |
| 04 | Issued for Tender | 07 July 2025 |
| 03 | Issued for SPC - 5th submission | 02 July 2025 |
| 02 | Issued for minor variance | 30 April 2025 |

THE ARCHITECT WAIVES ANY AND ALL RESPONSIBILITY AND LIABILITY FOR PROBLEMS WHICH ARISE FROM FAILURE TO FOLLOW THESE PLANS, SPECIFICATIONS, AND THE DESIGN INTENT THEY CONVEY, OR FOR PROBLEMS WHICH ARISE FROM OTHERS' FAILURE TO OBTAIN AND/OR FOLLOW THE ARCHITECT'S GUIDANCE WITH RESPECT TO ANY ERRORS, OMISSIONS, INCONSISTENCIES, AMBIGUITIES OR CONFLICTS WHICH ARE ALLEGED.

IT IS THE RESPONSIBILITY OF THE APPROPRIATE CONTRACTOR TO CHECK AND VERIFY ALL DIMENSIONS ON SITE AND PROMPTLY REPORT ALL ERRORS AND/OR OMISSIONS TO THE CONSULTANT BEFORE WORK COMMENCES.

ALL WORK IS TO FOLLOW THE OCB 2012 AND ANY OTHER APPLICABLE CODES AND REGULATIONS.

DO NOT SCALE DRAWINGS.

THESE DRAWINGS ARE NOT TO BE USED FOR CONSTRUCTION UNLESS A BUILDING PERMIT IN RESPECT OF THIS PROJECT HAS BEEN GRANTED BY AUTHORITIES AND THEY ARE ISSUED FOR CONSTRUCTION.

COPYRIGHT RESERVED.

professional stamp

project north

ONTARIO ASSOCIATION OF ARCHITECTS
KRISTOPHER D. BENES
LICENCE 6432

open plan architects inc.

340 gladstone ave. | suite 301 | ottawa | on
613-883-5090 info@openplan.ca

project

424 CHURCHILL AVENUE N.,
APARTMENT BUILDING

drawing

NORTH AND SOUTH ELEVATIONS

| drawn | KDB | date | 2022-SEP-12 |
|-------------|-------------|----------|-------------|
| approved | KDB | revision | 0 |
| project no. | 2109 | scale | 1 : 125 |
| drawing no. | A200 | | |

18881

D07-12-22-0152

Andrew McCreight

ANDREW MCCREIGHT
MANAGER, DEVELOPMENT REVIEW CENTRAL
PLANNING, DEVELOPMENT & BUILDING SERVICES
DEVELOPMENT DEPARTMENT, CITY OF OTTAWA

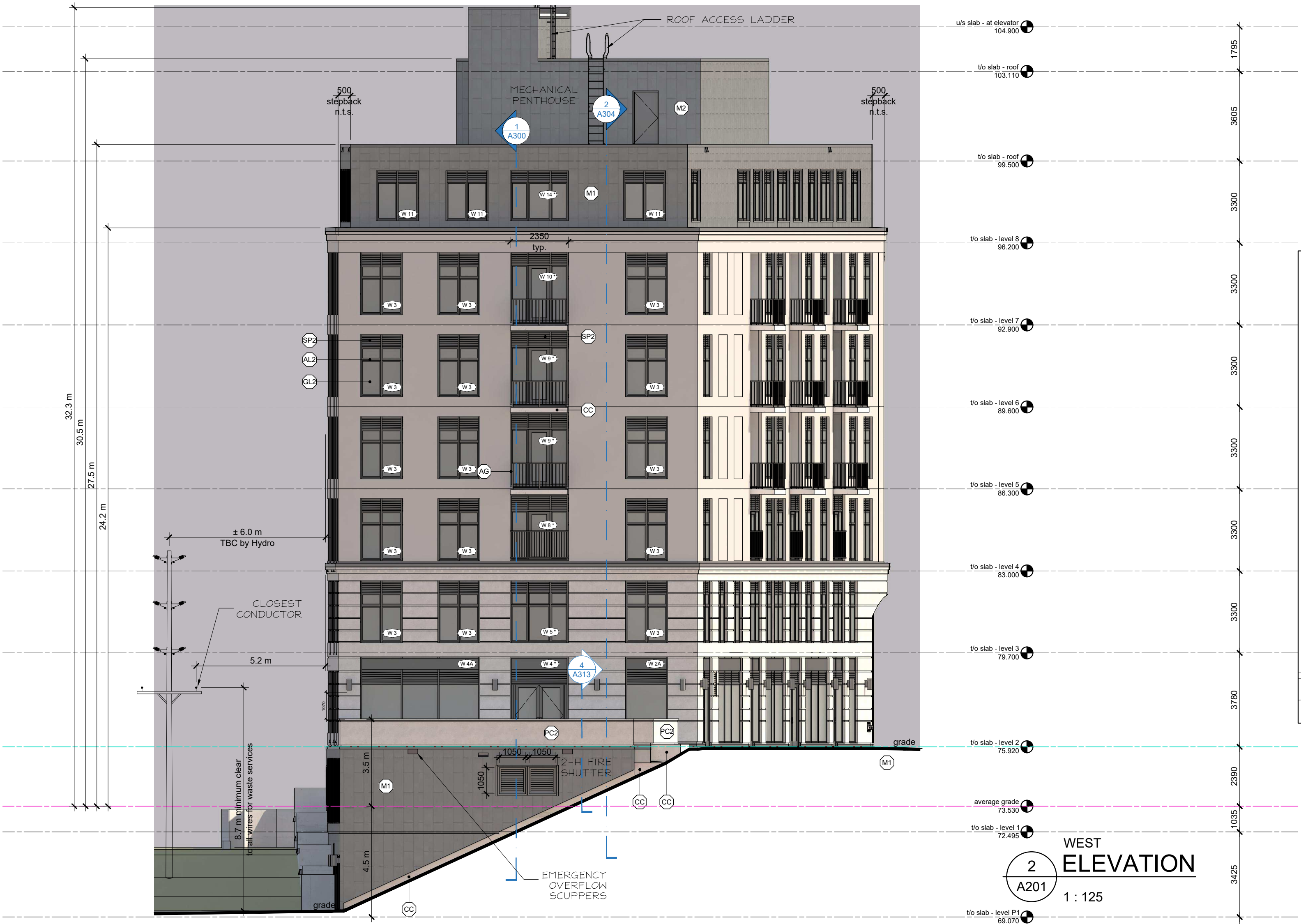
APPROVED
By Andrew McCreight at 11:48 am, Oct 30, 2025



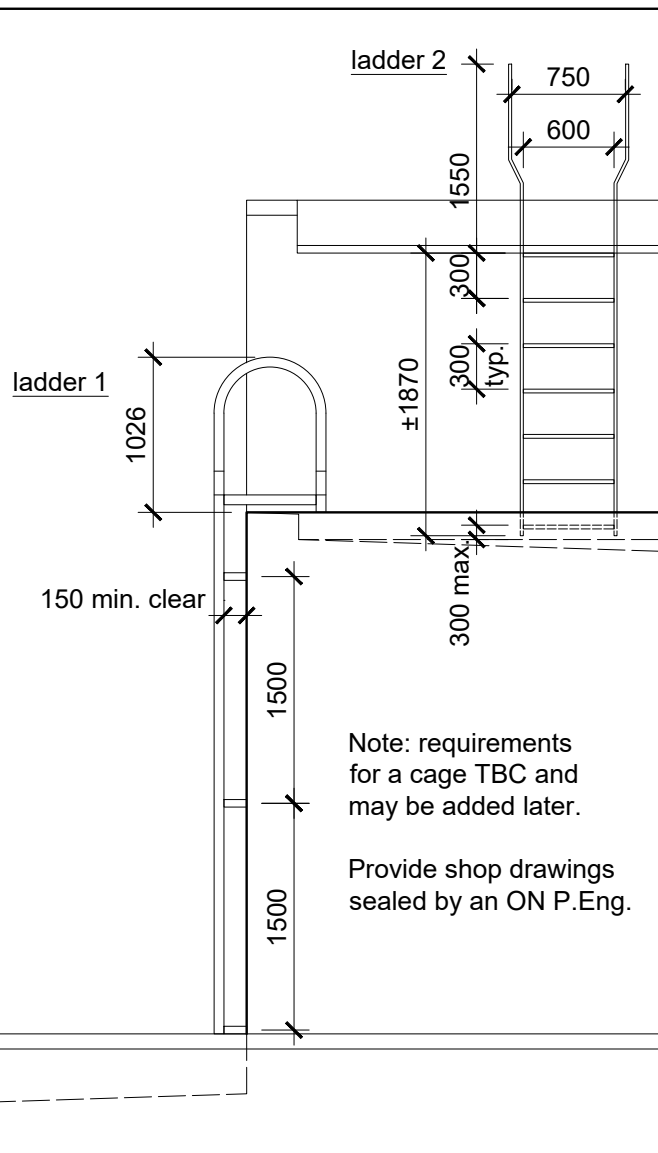
- MATERIALS LEGEND :**
- ALG aluminum guard - charcoal coloured
 - ALB aluminum window framing - aged-copper coloured
 - ALC aluminum window framing - charcoal coloured
 - CB poured concrete - w/ blasted finish
 - CC poured concrete
 - GL1 glass type 1
 - GL2 glass type 2
 - GL3 glass type 3 - translucent patterned
 - GL4 glass type 4 - translucent
 - M1 metal interlocking tile cladding - dark colour (levels P1, 1 + 8)
 - M2 metal interlocking tile cladding - light colour (penthouse)
 - ML metal louver - colour to match adjacent cladding material
 - OB rubber overhead door
 - PC1 pre-cast concrete panels - colour + finish type 1
 - PC2 pre-cast concrete panels - colour + finish type 2
 - PC3 pre-cast concrete panels - colour + finish type 3
 - PV pre-cast concrete panels - w/ vertical flutes colour + finish type 2
 - SP1 aluminum insulated spandrel panel - aged-copper coloured
 - SP2 aluminum insulated spandrel panel - w/ charcoal coloured louvers
 - SP3 aluminum insulated spandrel panel - with opaque spandrel glass
 - ZF zinc drip flashing

- General Notes:**
- Provide shop drawings for all windows, doors and glazing. Provide engineer's stamp where specified.
 - All windows with sill heights below 1070mm from finished interior floor shall be designed as guards by an engineer. Provide limiters to all of these windows.
 - Window, door and glazing energy performance characteristics shall comply with the SB-10 requirements identified in this drawings package.
 - All balcony guards to be designed by the supplier's engineer. Stamped shop drawings shall be provided to architect.

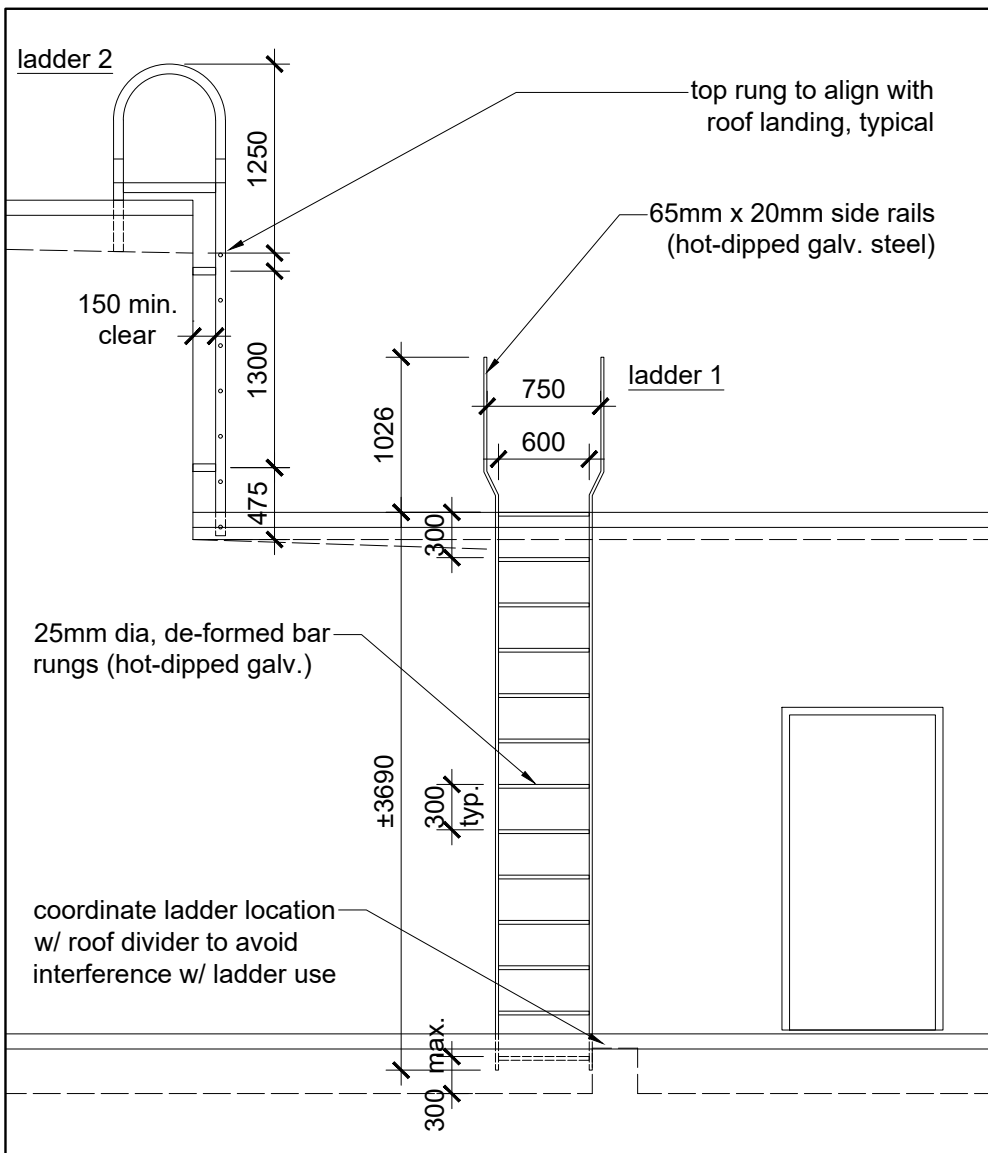
EAST ELEVATION
1:125



WEST ELEVATION
1:125



roof ladders, south elev.
1:50



roof ladders, west elev.
1:50

| | | | |
|---|---|--|----------|
| CLIENT / OWNER : CHURCHILL PROPERTIES INC. 5-145 SELECT AVE. TORONTO, ON M1V 5M8 416-292-9920 | | LANDSCAPE ARCHITECT : IBI GROUP 410 ALBERT STREET, SUITE 101 WATERLOO, ON N2L 3V3 519-585-2285 | |
| CONSULTING PLANNER : FOTENN 396 COOPER STREET, SUITE 300 OTTAWA, ON K2P 2H7 613-730-5709 | | SURVEYOR : ANNIS, O'SULLIVAN, VOLLEBEKK LTD. 14 CONCOURSE GATE, SUITE 500 OTTAWA, ON K2E 2T6 613-727-0850 | |
| ARCHITECT : OPEN PLAN ARCHITECTS INC. 340 GLADSTONE AVE., SUITE 301, OTTAWA, ON K2P 0Y8 613-234-8883 | | NOISE, VIBRATION & WIND ENGINEER : GRADIENT WIND ENGINEERING 127 WALGREEN ROAD, OTTAWA, ON K0A 1I0 613-636-0934 | |
| STRUCTURAL ENGINEER : D + M STRUCTURAL 333 PRESTON STREET, SUITE 110 OTTAWA, ON K1S 5N4 613-651-9490 | | TRANSPORTATION ENGINEER : CASTELGLEN CONSULTANTS INC. 2460 LANCASTER ROAD, OTTAWA, ON K1B 4S5 613-731-4022 | |
| MECHANICAL, ELECTRICAL & CIVIL ENGINEER : LRL ENGINEERING 5430 CANOTEX ROAD, OTTAWA, ON K1J 9G2 613-642-3434 | | | |
| 07 | Issued for Site Plan Application - 6th round comments | 23 Sep. 2025 | |
| 06 | Issued for shop drawings | 23 Sep. 2025 | |
| 05 | Issued for Tender | 07 July 2025 | |
| 04 | Issued for SPC - 5th submission | 02 July 2025 | |
| 03 | Issued for coordination w/ Englobe | 21 May 2025 | |
| 02 | Issued for minor variance | 30 April 2025 | |
| rev. / issue | description | date | MM/DD/YY |
| THE ARCHITECT WAIVES ANY AND ALL RESPONSIBILITY AND LIABILITY FOR PROBLEMS WHICH ARISE FROM FAILURE TO FOLLOW THESE PLANS, SPECIFICATIONS, AND THE DESIGN INTENT THEY CONVEY, OR FOR PROBLEMS WHICH ARISE FROM OTHERS' FAILURE TO OBTAIN AND/OR FOLLOW THE ARCHITECT'S GUIDANCE WITH RESPECT TO ANY ERRORS, OMISSIONS, INCONSISTENCIES, AMBIGUITIES OR CONFLICTS WHICH ARE ALLEGED. | | | |
| IT IS THE RESPONSIBILITY OF THE APPROPRIATE CONTRACTOR TO CHECK AND VERIFY ALL DIMENSIONS ON SITE AND PROMPTLY REPORT ALL ERRORS AND/OR OMISSIONS TO THE CONSULTANT BEFORE WORK COMMENCES. | | | |
| ALL WORK IS TO FOLLOW THE OCB 2012 AND ANY OTHER APPLICABLE CODES AND REGULATIONS. | | | |
| DO NOT SCALE DRAWINGS. | | | |
| THESE DRAWINGS ARE NOT TO BE USED FOR CONSTRUCTION UNLESS A BUILDING PERMIT IN RESPECT OF THIS PROJECT HAS BEEN GRANTED BY AUTHORITIES AND THEY ARE ISSUED FOR CONSTRUCTION. | | | |
| COPYRIGHT RESERVED. | | | |

| | |
|--------------------|---------------|
| professional stamp | project north |
| | |

open plan architects inc.

340 gladstone ave. | suite 301 | ottawa | on
613-883-5090 info@openplan.ca

project
**424 CHURCHILL AVENUE N.,
APARTMENT BUILDING**

drawing
**EAST AND WEST
ELEVATIONS**

| | | | |
|-------------|------|----------|-------------|
| drawn | KDB | date | 2022-SEP-12 |
| approved | KDB | revision | 0 |
| project no. | 2109 | scale | 1:125 |
| drawing no. | | | |

A201