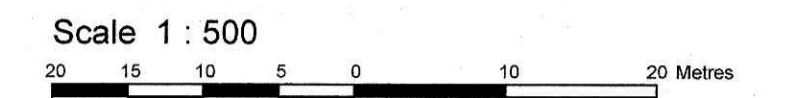
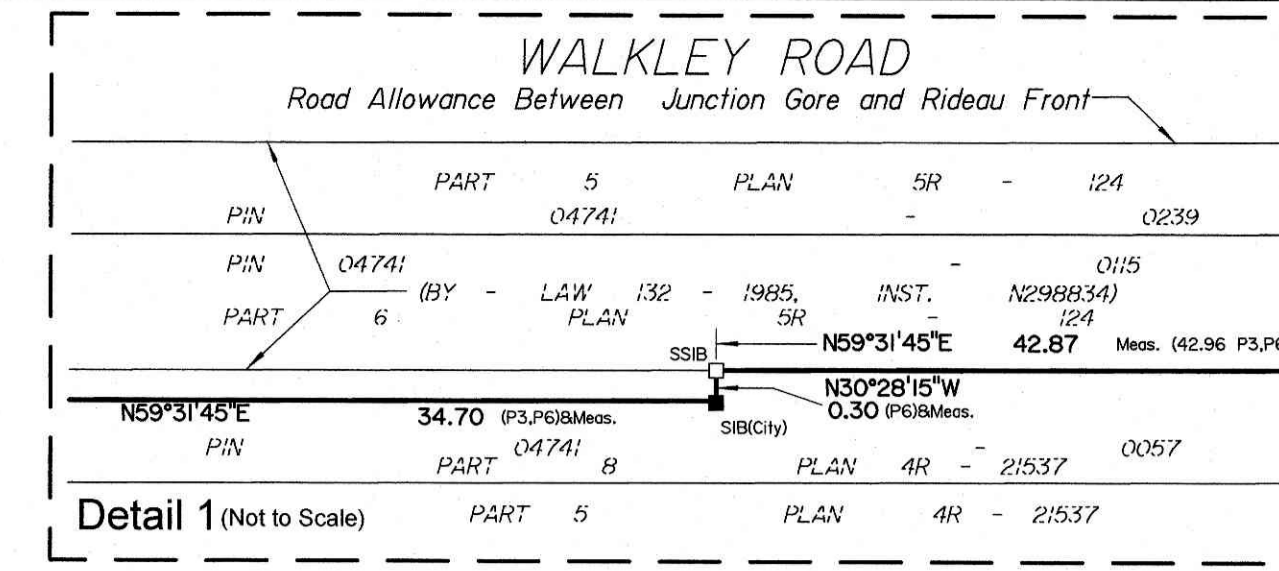


PART OF LOTS 4 and 1  
CONCESSION 4 (RIDEAU FRONT)  
(Township of Gloucester)  
CITY OF OTTAWA

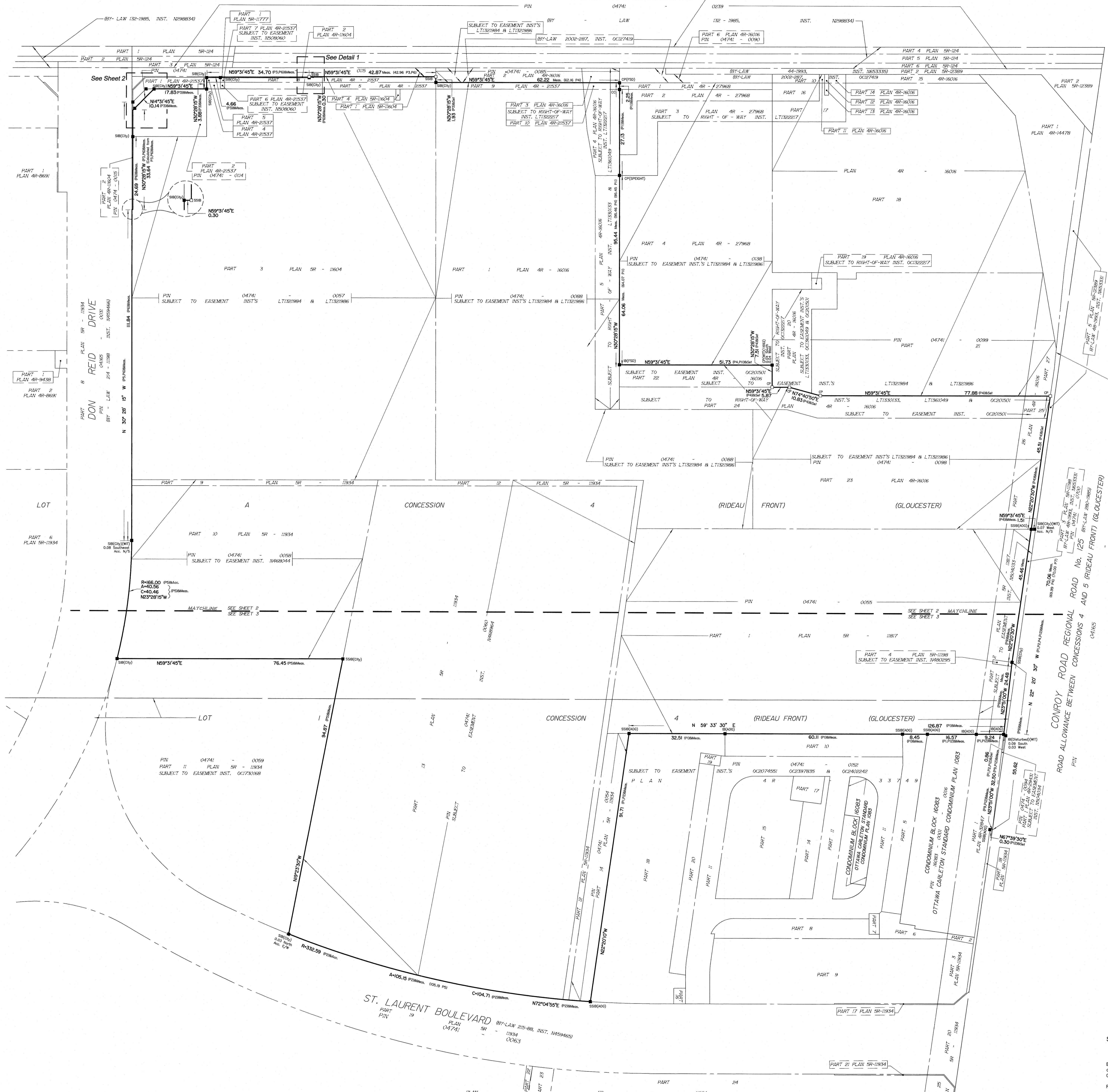
Prepared by Annis, O'Sullivan, Vollebek Ltd.



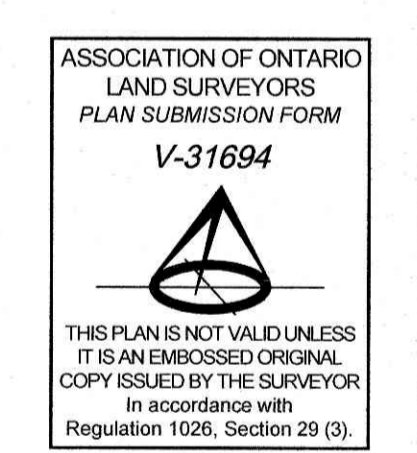
Metric  
DISTANCES SHOWN ON THIS PLAN ARE IN METRES AND  
CAN BE CONVERTED TO FEET BY DIVIDING BY 0.3048



WALKLEY ROAD  
REGIONAL ROAD No. 74  
Road Allowance Between Junction Gore and Rideau Front



CONROY ROAD REGIONAL ROAD No. 125 (RIDEAU FRONT) (GLOUCESTER)  
ROAD ALLOWANCE BETWEEN CONCESSIONS 4 AND 5 (RIDEAU FRONT) (GLOUCESTER)



Surveyor's Certificate  
I CERTIFY THAT:  
1. This survey and plan are correct and in accordance with the Survey Act and the Surveyors Act and the regulations made under them.  
2. The survey was completed on the 8th day of August, 2022.  
Date: 8/8/22  
V. Andrew Sheehy  
Ontario Land Surveyor

Notes & Legend

□	Denotes	Survey Monument Planted
■		Survey Monument Found
SB		Standard Iron Bar
SSB		Short Standard Iron Bar
IB		Iron Bar
CC		Cut Cross
CP		Concrete Pin
(WIT)		Witness
Meas.		Measured
(AOC)		Annis, O'Sullivan, Vollebek Ltd.
(P1)		Plan 4R-3749
(P2)		Plan 4R-32547
(P3)		Plan 4R-21537
(P4)		Plan 4R-16016
(P5)		Plan SR-11934
(P6)		Plan SR-11604
(P7)		(AOC) Plan dated July 9, 2003
(P8)		Plan SR-11817
(P9)		Plan SR-11598
(P10)		Plan 4R-12389
(P11)		Plan 4R-27968
(P12)		Ottawa-Carleton Standard Condominium Plan 1063

SITE AREA = 59587.6 m<sup>2</sup>  
Bearings are grid, derived from Can-Net 2016 Real Time Network GPS observations and are referenced to Specified Control Points 01919680105 and 019196434761, MTM Zone 9 (76°30' West Longitude) NAD-83 (original).  
Refer to Sheet 2 and Sheet 3 for encroachments.