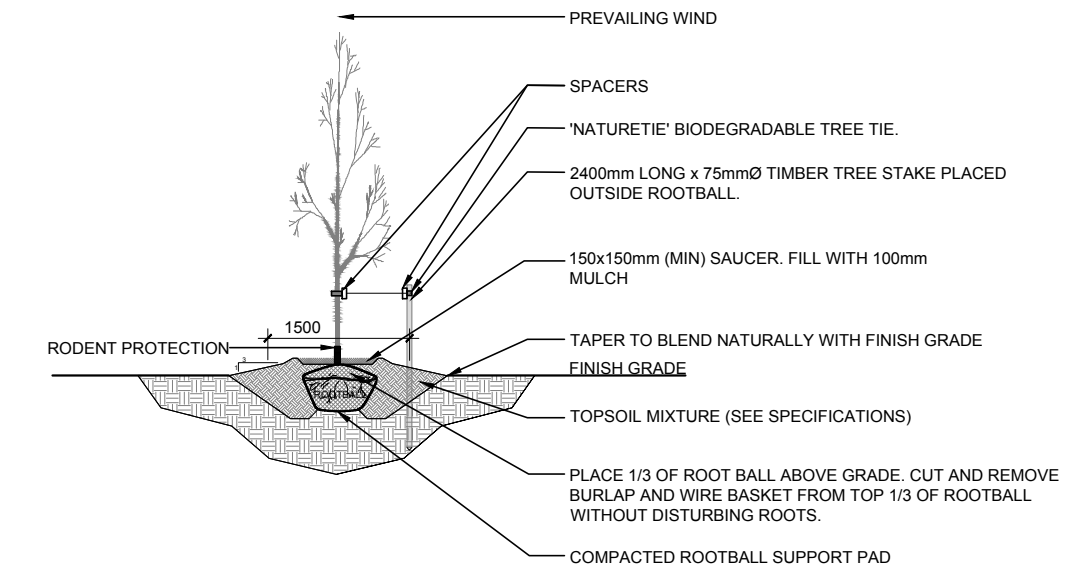


PROPOSED PLANT LIST

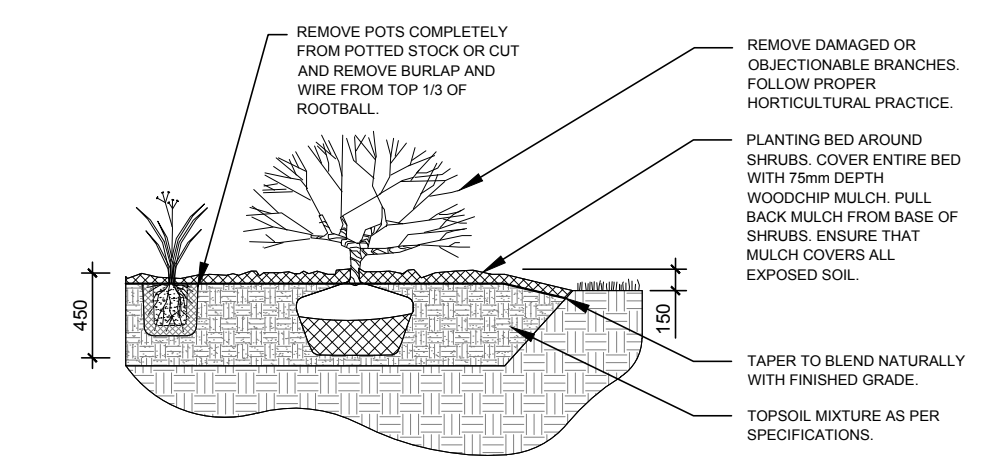
KEY	QTY	BOTANICAL NAME	COMMON NAME	SIZE	CONDITION	REMARKS
TREES						
NM	3	Acer platanoides 'Columnare'	Columnare Norway Maple	60mm ø	B&B	
SHRUBS						
HY	51	Hydrangea arborescens 'Annabelle'	Annabelle Hydrangea	3 gal. pot	Potted	800 mm o.c.
NB	3	Physocarpus opulifolius 'Little Devil'	Little Devil Ninebark	600mm ht.	Potted	1000 mm o.c.
MP	9	Pinus mugo 'Pumilio'	Dwarf Mugo Pine	600mm spr.	Potted	1000mm o.c.
UY	18	Taxus cuspidata 'Capitata'	Upright Japanese Yew	600 mm spr.	Potted	1200 mm o.c.
PERENNIALS						
DL	40	Hemerocallis 'Stella D'Oro'	Stella D'Oro Day Lily	150mm pot	Potted	400 mm o.c.
LG	63	Leymus arenarius 'Blue Dune'	Blue Dune Lyme Grass	250mm pot	Potted	800 mm o.c.
SA	13	Perovskia atriplicifolia	Russian sage	250mm pot	Potted	600 mm o.c.
SE	24	Sedum telephium 'Autumn Joy'	Autumn Joy Sedum	150mm pot	Potted	400 mm o.c.
SR	136	Pharalis arundinacea 'Strawberries & Cream'	Strawberries & Ribbon Grass	250mm pot	Potted	600 mm o.c.

EXISTING TREE LIST

KEY	QTY	BOTANICAL NAME	COMMON NAME	SIZE	CONDITION	REMARKS	OWNERSHIP
TREES							
AC	1	Acer negundo	Manitoba Maple	500mm dbh	Fair	To remain	245 Rochester / 98 Willow
AE	2	Acer negundo	Manitoba Maple	200-400mm dbh	Fair	To be removed	245 Rochester / 90 Willow
AN	3	Acer negundo	Manitoba Maple	220-340mm dbh	Fair-good	To be removed	City of Ottawa
AP	3	Acer platanoides	Norway Maple	150-250mm dbh	Good	To be removed	City of Ottawa
FR	1	Fraxinus spp.	Ash	120mm dbh	Dead	To be removed	City of Ottawa
GT	1	Gleditsia tracanthos	Honey Locust	200mm dbh	Fair	To be removed	27 Balsam
MM	2	Acer negundo	Manitoba Maple	150-200mm dbh	Good	To be removed	245 & 261 Rochester
MN	1	Acer negundo	Manitoba Maple	200mm dbh	Good	To remain	98 Willow
SH	1	Sorbus x hybrida	Oakleaf Mountain Ash	490mm dbh	Good	To remain	City of Ottawa
UP	1	Siberian Elm	Ulmus pumila	240mm dbh	Fair	To be removed	City of Ottawa



2 DECIDUOUS TREE PLANTING
L.1 N.T.S.



3 SHRUB / PERENNIAL PLANTING
L.1 N.T.S.

- #### GENERAL NOTES:
- IT IS THE RESPONSIBILITY OF THE APPROPRIATE CONTRACTOR OR OFFICIAL TO REPORT ANY ERRORS, OMISSIONS OR DISCREPANCIES ON THIS PLAN WITH ACTUAL SITE CONDITIONS TO THE LANDSCAPE ARCHITECT BEFORE PROCEEDING WITH CONSTRUCTION.
 - THE CONTRACTOR IS TO NOTIFY ALL UTILITY COMPANIES AND AUTHORITIES PRIOR TO ANY EXCAVATION AND ASCERTAIN LOCATIONS OF UNDERGROUND SERVICES.
 - THE CONTRACTOR IS TO REINSTATE ALL AREAS AND ITEMS DAMAGED AS A RESULT OF CONSTRUCTION ACTIVITY.
 - THE CONTRACTOR IS TO COMPLY WITH ALL PERTINENT CODES AND BY-LAWS.
 - THE CONTRACTOR IS TO MAINTAIN A POSITIVE SURFACE RUN-OFF THROUGHOUT THE ENTIRE CONSTRUCTION PERIOD.
 - THE LANDSCAPE ARCHITECT IS NOT RESPONSIBLE FOR SUBSURFACE CONDITIONS.
 - THE CONTRACTOR IS TO IDENTIFY ALL EXISTING TREES TO REMAIN ON SITE WITH THE LANDSCAPE ARCHITECT PRIOR TO CONSTRUCTION.
 - THE CONTRACTOR IS TO STAKE THE PROPOSED LOCATION OF ALL PLANT MATERIAL IN CONJUNCTION WITH THE LANDSCAPE ARCHITECT PRIOR TO EXCAVATION.
 - MINIMUM DISTANCES FOR SELECTED DECIDUOUS TREES ARE AS FOLLOWS:
 - BUILDING FOUNDATIONS - 7.5M
 - SIDEWALKS - 1.5M
 - PUBLIC STREETS - 2.5M
 - UNDERGROUND INFRASTRUCTURE - 2.0M
 - ALL TREES WITHIN 1M OF UNDERGROUND UTILITY TRENCHES ARE TO BE EXCAVATED BY HAND.
 - REMOVE ALL PROTECTIVE WRAPPING FROM TREE TRUNKS AFTER INSTALLATION.
 - STAKING OF TREES SHALL ONLY BE PERFORMED IF NECESSARY.
 - ENSURE THAT MULCH IS PULLED BACK A MINIMUM DISTANCE OF 75MM FROM BASE OF TREE TRUNK.

CONSULTANTS

ARCHITECTS: SIMMONDS ARCHITECTURE
342 CATHERINE STREET, OTTAWA, ON
K1R 1C4 Tel: (613) 967-7888

CIVIL ENGINEERS: XXXX
XXXX
Tel: (613)

LEGEND

- EXISTING TREE TO REMAIN
- EXISTING TREE TO BE REMOVED
- PROPOSED DECIDUOUS TREE
- PROPOSED SHRUB / PERENNIAL
- PROPOSED SOD
- PROPOSED PRECAST CONCRETE PAVER
- PROPOSED RIVERSTONE

1	ISSUED FOR SITE PLAN APPLICATION	10/07/2022	LC	JL
No.	Issue	Date	DR	CK

JAMES B. LENNOX & ASSOCIATES INC.
LANDSCAPE ARCHITECTS
3332 CARLING AVE. OTTAWA, ONTARIO K2H 5A5
Tel. (613) 722-5168 Fax. (866) 343-3942

PROJECT
ROCHESTER AND BALSAM
245-267 ROCHESTER ST.
OTTAWA, ON. K1R 7M9

DRAWING
TREE CONSERVATION REPORT &
LANDSCAPE PLAN

STAMP: ASSOCIATION OF LANDSCAPE ARCHITECTS OF ONTARIO MEMBER

SCALE: AS SHOWN

START DATE: AUGUST, 2022

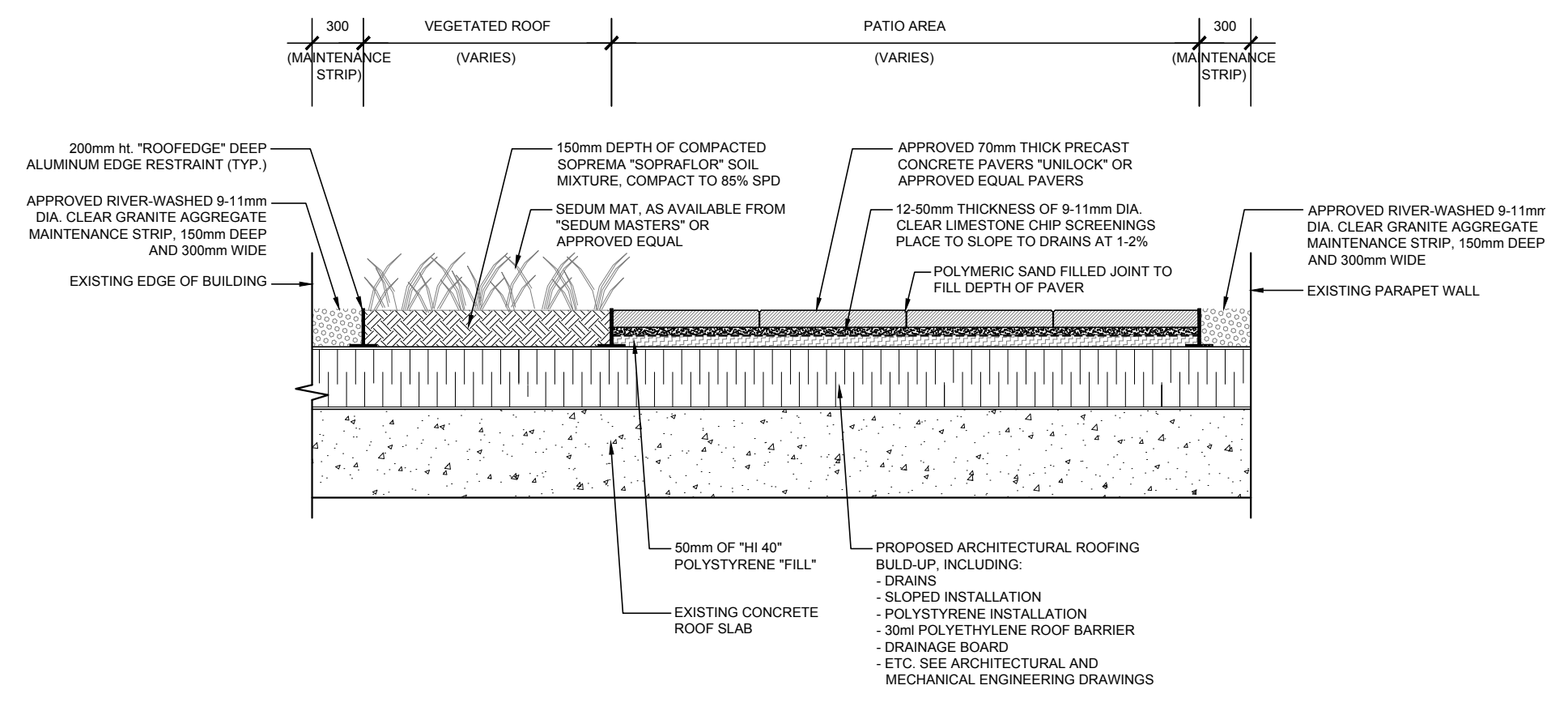
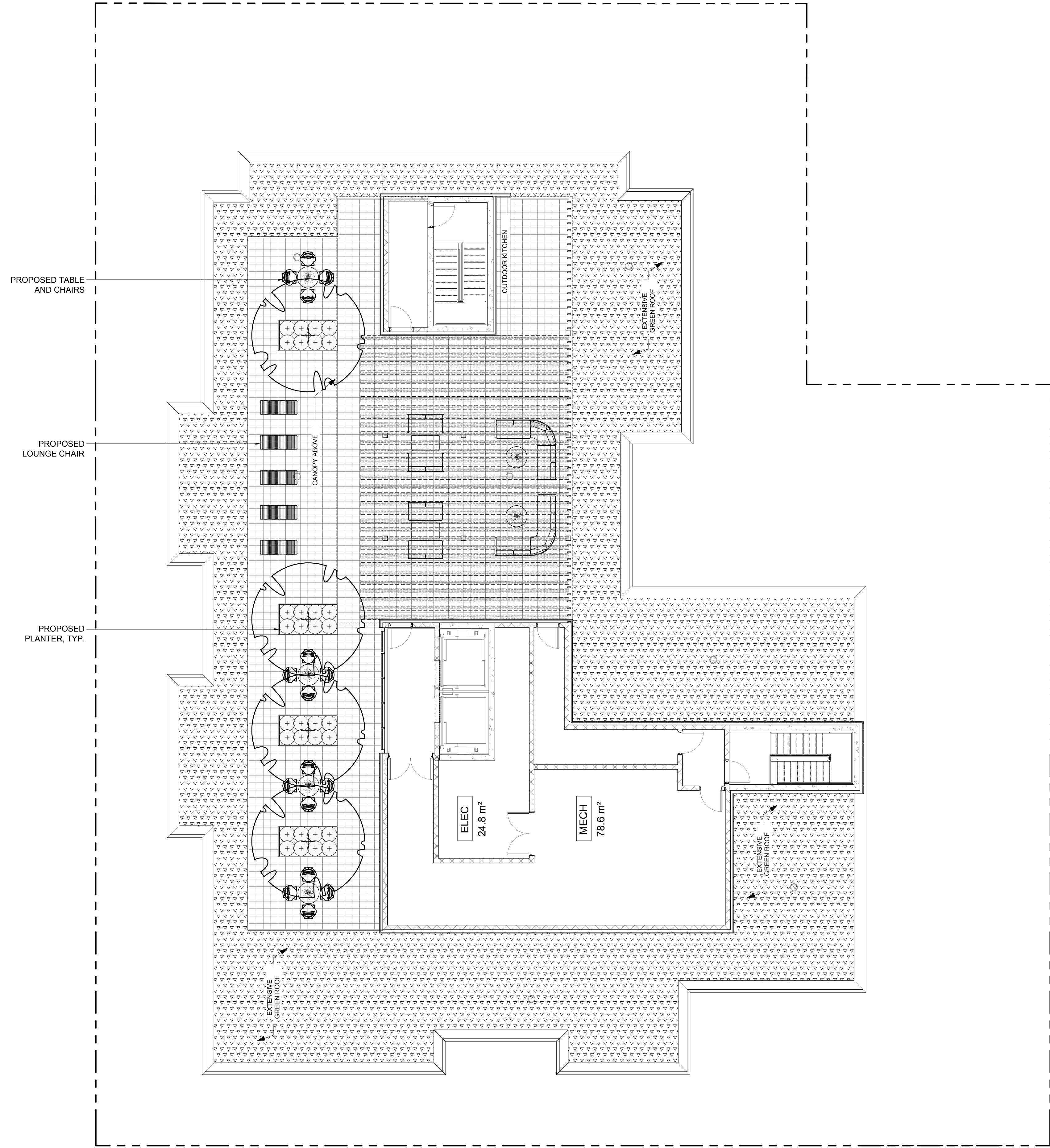
PROJECT NO.: 22-MIS-2281

PROJECT NORTH

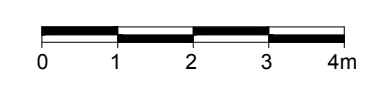
DRAWING NO.: **L.1**

PLOT SIZE ARCH-D

1 TREE CONSERVATION REPORT AND LANDSCAPE PLAN
L.1 SCALE 1:100



1 ROOF TERRACE DETAIL
L2 N.T.S.



1 ROOF TERRACE LANDSCAPE PLAN
L2 SCALE 1:100

CONSULTANTS

ARCHITECTS: SIMMONS ARCHITECTURE
345 CATHERINE STREET, OTTAWA, ON.
K1R 1C4 Tel: (613) 967-7888

CIVIL ENGINEERS: XXXX
XXXX
Tel: (613)

LEGEND

PROPOSED SEDUM MAT COMPLETE WITH 150mm MIN. SOIL MIXTURE TO A 100LB LIVE LOAD

PROPOSED PRECAST CONCRETE PAVERS

1	ISSUED FOR SITE PLAN APPLICATION	10/07/2022	LC	JL
No.	Issue	Date	DR	CK

JAMES B. LENNOX & ASSOCIATES INC.
LANDSCAPE ARCHITECTS
3332 CARLING AVE. OTTAWA, ONTARIO K2H 5A5
Tel. (613) 722-5168 Fax. (866) 343-3942

PROJECT
ROCHESTER AND BALSAM
245-267 ROCHESTER ST.
OTTAWA, ON. K1R 7M9

DRAWING
ROOF TERRACE LANDSCAPE PLAN

STAMP
ONTOARIO ASSOCIATION OF LANDSCAPE ARCHITECTS
MEMBER

SCALE
AS SHOWN

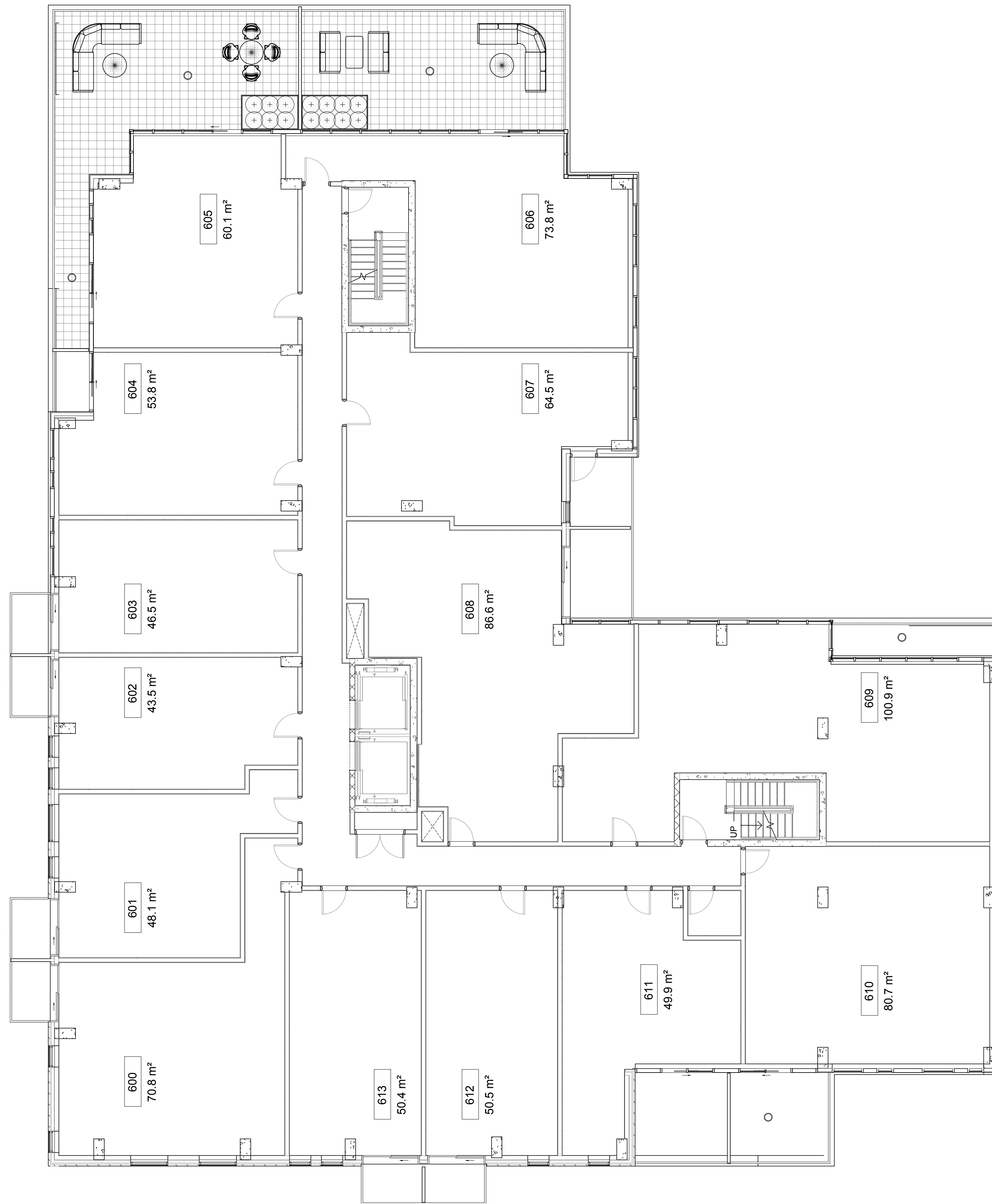
START DATE
AUGUST, 2022

PROJECT NO.
22-MIS-2281

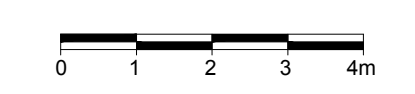
PROJECT NORTH

DRAWING NO.
L.2

PLOT SIZE ARCH-D



1 6th FLOOR LANDSCAPE PLAN
L.3 SCALE 1:100



CONSULTANTS

ARCHITECTS: SIMMONDS ARCHITECTURE
340 CATHERINE STREET, OTTAWA, ON.
K1R 1C4 Tel: (613) 967-7888

CIVIL ENGINEERS: XXXX
XXXX
Tel: (613)

LEGEND

PROPOSED PRECAST CONCRETE PAVERS

No.	Issue	Date mm/yyyy	LC	JL
1	ISSUED FOR SITE PLAN APPLICATION	10/07/2022		

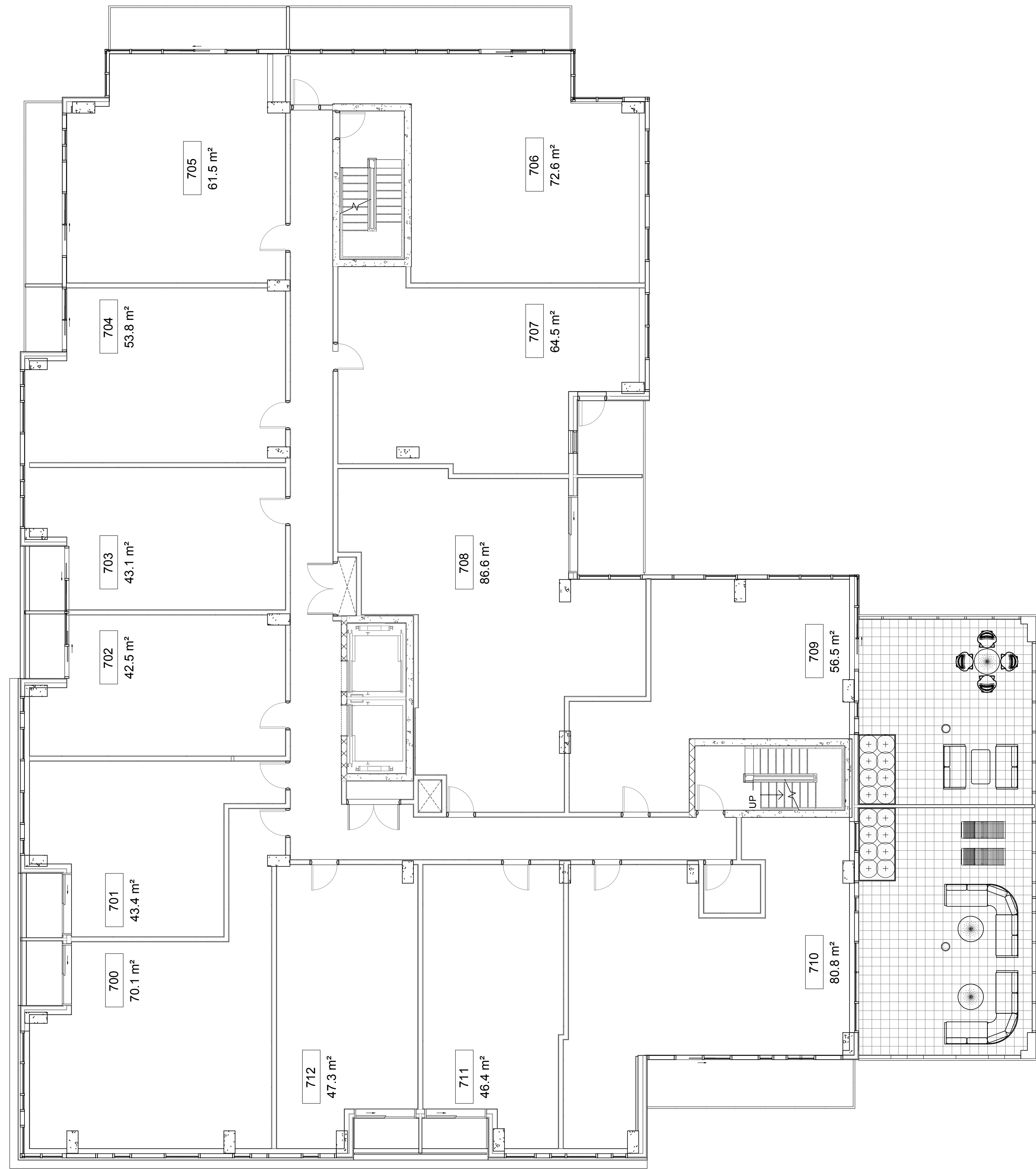
JAMES B. LENNOX & ASSOCIATES INC.
LANDSCAPE ARCHITECTS
3332 CARLING AVE. OTTAWA, ONTARIO K2H 5A5
Tel. (613) 722-5168 Fax. (866) 343-3942

PROJECT
ROCHESTER AND BALSAM
245-267 ROCHESTER ST.
OTTAWA, ON. K1R 7M9

DRAWING
6th FLOOR LANDSCAPE PLAN

	STAMP	SCALE
	AS SHOWN	
	START DATE	AUGUST, 2022
PROJECT NO.	22-MIS-2281	

PROJECT NORTH	DRAWING NO.
	L.3
	PILOT SIZE ARCH-D



1 7th FLOOR LANDSCAPE PLAN
L.4 SCALE 1:100

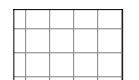


CONSULTANTS

ARCHITECTS:
SIMMONDS ARCHITECTURE
340 CATHERINE STREET, OTTAWA, ON.
K1R 1C4 Tel: (613) 967-7888

CIVIL
ENGINEERS: XXXX
XXX
Tel: (613)

LEGEND


 PROPOSED PRECAST CONCRETE
PAVERS

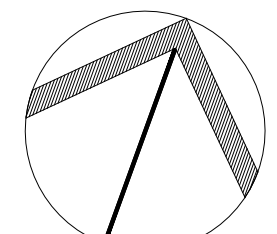
No.	Issue	Date mm/dd/yyyy	LC	JL
1	ISSUED FOR SITE PLAN APPLICATION	10/07/2022	LC	JL

JAMES B. LENNOX & ASSOCIATES INC.
LANDSCAPE ARCHITECTS
3332 CARLING AVE. OTTAWA, ONTARIO K2H 5A5
Tel. (613) 722-5168 Fax. (1866) 343-3942

PROJECT
ROCHESTER AND BALSAM
245-267 ROCHESTER ST.
OTTAWA, ON. K1R 7M9

DRAWING
7th FLOOR LANDSCAPE PLAN

	SCALE AS SHOWN
	START DATE AUGUST, 2022
	PROJECT NO. 22-MIS-2281
	DRAWING NO. L.4

PROJECT NORTH 	DRAWING NO. L.4
--	--------------------

PILOT SIZE ARCH-D