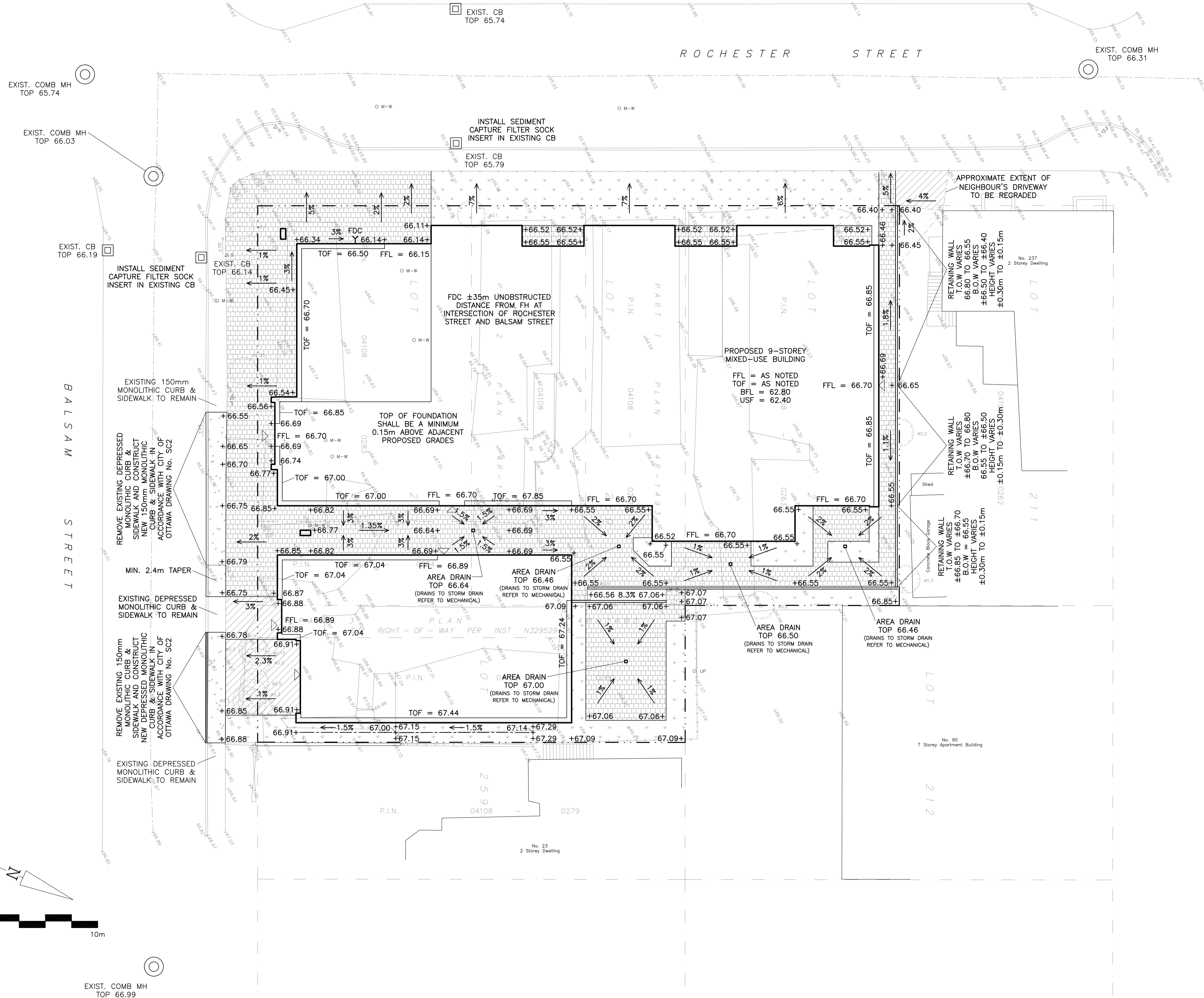


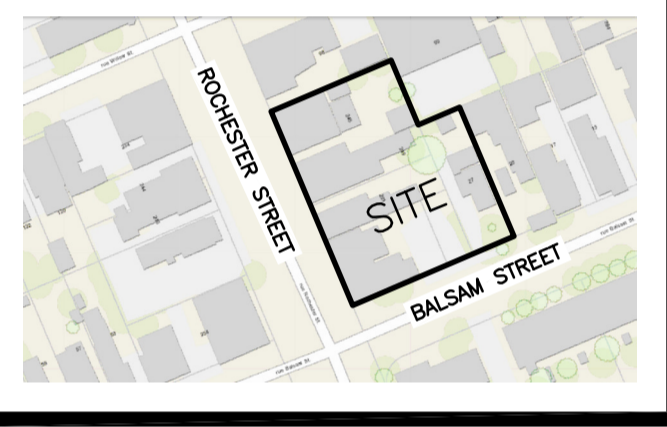
Site Benchmark  
Concrete Pin in UP  
Elevation = 66.40



**LEGEND**

- FFL FINISHED FLOOR ELEVATION
- TOF TOP OF FOUNDATION
- BFL BASEMENT FLOOR ELEVATION
- USF UNDERSIDE OF FOOTING
- PROPERTY LINE
- CB [ ] CATCH-BASIN
- MH (O) COMBINED MANHOLE
- FDC Y FIRE DEPARTMENT CONNECTION
- +99.99 EXISTING GRADE ELEVATION
- +99.99 PROPOSED GRADE ELEVATION
- 2% EXISTING SLOPE OF GRADE
- 2% PROPOSED SLOPE OF GRADE
- CENTERLINE OF SWALE
- 150mm BARRIER CURB
- D.C. DEPRESSED CURB
- PAVEMENT
- GRAVEL
- CONCRETE
- INTERLOCK

**KEY PLAN**

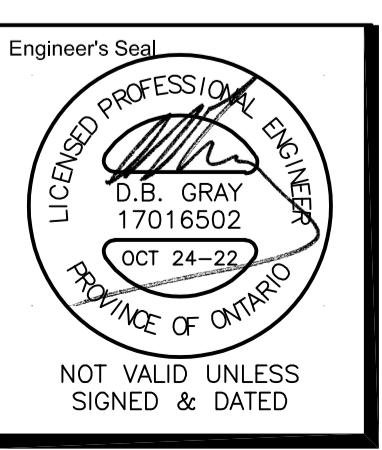


No.	DATE	REVISION
2	OCT 24-22	ISSUED FOR APPROVAL
1	SEP 1-22	PRELIMINARY

**D. B. GRAY ENGINEERING INC.**  
 Stormwater Management - Grading & Drainage - Storm & Sanitary Sewers - Watermain  
 700 Long Point Circle 613-425-8044  
 Ottawa, Ontario d.gray@dbgrayengineering.com

Project  
**PROPOSED 9-STORY MIXED-USE BUILDING**  
 245-263 ROCHESTER STREET & 27 BALSAM STREET  
 OTTAWA, ONTARIO

Drawing Title  
**GRADING PLAN AND EROSION & SEDIMENT CONTROL PLAN**



Engineer's Seal  
 Drawn D.B.G.  
 H. Scale 1:150  
 V. Scale  
 Date SEP 1-22  
 Job No. 22076  
 Drawing No.  
**C-2 of 4**

REFER TO NOTES ON DRAWING C-3

