

ROCHESTER & BALSAM

245-267 ROCHESTER ST. OTTAWA, ON. K1R 7M9

ELECTRICAL

Client

| LIGHTING LEGEND | |
|-----------------|--|
| SYMBOL | DESCRIPTION |
| | FLUORESCENT/LED LIGHT FIXTURE - TYPE AS SHOWN |
| | CEILING MOUNTED LIGHT FIXTURE - TYPE AS SHOWN |
| | WALL MOUNTED LIGHT FIXTURE - TYPE AS SHOWN |
| | EXTERIOR POLE MOUNT LIGHT FIXTURE - TYPE AS NOTED |
| | VALENCE LIGHTING - TYPE AS SHOWN |
| | TRACK LIGHTING - TYPE AS SHOWN |
| | WALL MOUNTED SWITCH - M.H. 1200mm A.F.F. |
| | WALL MOUNTED DOUBLE GANG SWITCH - M.H. 1200mm A.F.F. |
| | WALL MOUNTED TRIPLE GANG SWITCH - M.H. 1200mm A.F.F. |
| | WALL MOUNTED FOUR GANG SWITCH - M.H. 1200mm A.F.F. |
| | WALL MOUNTED 3-WAY SWITCH - M.H. 1200mm A.F.F. |
| | WALL MOUNTED TIMER SWITCH - M.H. 1200mm A.F.F. |
| | KEY SWITCH - M.H. 1200mm A.F.F. |
| | PHOTOCELL |
| | RELAY FOR LIGHTING CONTROL |
| | MOTION SENSOR SWITCH |
| | DIMMER SWITCH |
| | DOOR SWITCH |
| | CEILING MOUNTED OCCUPANCY SENSOR |
| | CEILING MOUNTED DAYLIGHT SENSING DETECTOR |
| | CEILING MOUNTED EXIT LIGHT, SINGLE OR DOUBLE-FACE AS SHOWN |
| | WALL MOUNTED EXIT LIGHT, SINGLE OR DOUBLE-FACE AS SHOWN |
| | EMERGENCY BATTERY UNIT C/W RECEPTACLE AND LIGHTING HEADS |
| | REMOTE EMERGENCY LIGHTING DUAL HEAD - WALL MOUNTED |

| FIRE ALARM LEGEND | |
|-------------------|--|
| SYMBOL | DESCRIPTION |
| | FIRE ALARM CONTROL PANEL |
| | FIRE ALARM ANNUNCIATOR PANEL |
| | FIRE ALARM HEAT DETECTOR, 57°C FIXED TEMP. |
| | FIRE ALARM HEAT DETECTOR, 57°C RATE OF RISE AND FIXED TEMP. |
| | FIRE ALARM SMOKE DETECTOR CO = CARBON MONOXIDE DETECTOR COMBO RB = DETECTOR COMPLETE WITH AUXILIARY RELAY BASE |
| | DUCT MOUNTED SMOKE DETECTOR C/W LED INDICATOR |
| | FIRE ALARM PULL STATION |
| | FIRE ALARM HORN/STROBE, CEILING MOUNTED |
| | FIRE ALARM HORN, WALL MOUNTED |
| | FIRE ALARM HORN AND STROBE LIGHT, WALL MOUNTED |
| | FIRE ALARM STROBE LIGHT, WALL MOUNTED |
| | RESIDENTIAL COMBINATION CO/SMOKE ALARM/STROBE LIGHT |
| | FIRE ALARM SUPERVISED VALVE |
| | FIRE ALARM FLOW SWITCH |
| | FIRE ALARM TAMPER SWITCH |
| | FIRE ALARM CHECK VALVE |
| | FIRE ALARM LOW PRESSURE SWITCH |
| | MAGNETIC DOOR HOLD OPEN DEVICE |
| | CARBON MONOXIDE DETECTOR |
| | ELECTRICALLY ACTUATED FIRE DAMPER / SMOKE DAMPER / FIRE/SMOKE DAMPER |
| | FIRE ALARM RELAY |
| | NATURAL GAS VALVE |
| | LINE ISOLATOR |

PROJECT NOTES
GENERAL

ELECTRICAL DRAWING SHALL BE READ IN CONJUNCTION WITH MECHANICAL, ARCHITECTURAL AND STRUCTURAL SPECIFICATIONS AND DRAWINGS. REFER TO ARCHITECTURAL DETAIL DRAWINGS FOR DIMENSIONS AND ADDITIONAL INFORMATION.

| POWER LEGEND | |
|--------------|---|
| SYMBOL | DESCRIPTION |
| | 15A, 120V WALL MOUNTED DUPLEX RECEPTACLE |
| | DEDICATED DUPLEX RECEPTACLE |
| | GROUND FAULT INTERRUPTING RECEPTACLE |
| | RECEPTACLE INSTALLED OVER COUNTER |
| | DUPLEX RECEPTACLE, HALF SWITCHED |
| | 5-20R HOUSEKEEPING RECEPTACLE |
| | SPLIT CIRCUIT RECEPTACLE |
| | 5-20R RECEPTACLE INSTALLED OVER COUNTER |
| | 15A, 120V WALL MOUNTED QUAD RECEPTACLE |
| | SPECIAL RECEPTACLE - TYPE AS INDICATED |
| | JUNCTION BOX, 250x250x150mm UNLESS NOTED OTHERWISE B = WINDOW BLIND SINGLE GANG BOX |
| | MAIN JUNCTION/PULL BOX |
| | DISCONNECT SWITCH |
| | COMBINATION MAGNETIC MOTOR STARTER |
| | MANUAL MOTOR STARTER C/W AUX. CONTACTS - CSA CERTIFIED AS A DISCONNECTING MEANS AND LOCKABLE IN THE "OFF" POSITION. |
| | MOTORIZED DAMPER BY MECHANICAL |
| | TRANSFORMER |
| | THERMOSTAT PROVIDED BY ELECTRICAL |
| | THERMOSTAT SUPPLIED BY MECH. INSTALLED & WIRED BY ELECTRICAL |
| | SPEED SWITCH SUPPLIED BY MECH. INSTALLED & WIRED BY ELECTRICAL |
| | TIME CLOCK |
| | SINGLE PHASE ELECTRIC MOTOR |
| | THREE PHASE ELECTRIC MOTOR - HORSEPOWER AS SHOWN |
| | SURFACE MOUNTED PANEL |
| | RECESSED PANEL |
| | GENERATOR C/W ENVIRONMENTAL HOUSING |
| | BARRIER-FREE DOOR OPERATOR C/W PUSHBUTTONS |
| | FLEXIBLE CONDUIT |
| | CONDUIT DOWN |
| | CONDUIT UP |
| | HARD WIRE CONNECTION |
| | PILOT LIGHT |
| | HOMERUN BACK TO PANEL |
| | WIRING IN OR UNDER FLOOR |
| | CONDUIT STUB C/W BUSHING |
| | HIGH TEMPERATURE ALARM BELL |
| | VARIABLE FREQUENCY DRIVE |

| SITE SERVICES LEGEND | |
|----------------------|--|
| SYMBOL | DESCRIPTION |
| | HYDRO METER |
| | HYDRO OTTAWA PAD MOUNT TRANSFORMER |
| | HYDRO OTTAWA HIGH VOLTAGE PAD MOUNT SWITCH |
| | UTILITY MANHOLE REFER TO NOTES |
| | UTILITY POLE (HYDRO/TEL/TV) REFER TO NOTES |
| | UNDERGROUND CONDUIT/DUCT FOR HIGH VOLTAGE PRIMARY POWER CABLES |
| | UNDERGROUND POWER UTILITY CONDUIT & WIRING H= LOW VOLTAGE HYDRO, SL= SITE LIGHTING |
| | UNDERGROUND COMM UTILITY CONDUIT & WIRING F= FIBER OPTIC, T= TELEPHONE, C= CABLE TV |
| | CONCRETE ENCASED DUCTBANK |
| | SINGLE HEAD POST TOP LIGHT STANDARD |
| | DOUBLE HEAD POST TOP LIGHT STANDARD |
| | WALL MOUNT LUMINAIRE |
| | TELEPHONE PEDESTAL |
| | CABLE TV PEDESTAL |

| TELECOMMUNICATION LEGEND | |
|--------------------------|---|
| SYMBOL | DESCRIPTION |
| | DATA OUTLET BOX |
| | TELEPHONE OUTLET BOX |
| | COMBINATION DATA/TELEPHONE OUTLET BOX |
| | CATV OUTLET BOX |
| | TELEPHONE JUNCTION BOX |
| | DATA JUNCTION BOX |
| | SERVICE 'IFFY' POLE |
| | PUBLIC ADDRESS (P/A) SPEAKER, CEILING MOUNTED |
| | PUBLIC ADDRESS (P/A) SPEAKER, WALL MOUNTED |
| | PUBLIC ADDRESS HORN |
| | PUBLIC ADDRESS VOLUME CONTROL |
| | CLOCK OUTLET, WALL MOUNTED |
| | CLOCK OUTLET, CEILING MOUNTED |
| | MICROPHONE OUTLET |
| | SMART BOX FOR TELEPHONE AND CATV |

| SECURITY LEGEND | |
|-----------------|--|
| SYMBOL | DESCRIPTION |
| | CARD READER |
| | PROXIMITY READER/RECEIVER |
| | ELECTRICAL STRIKE |
| | DOOR CONTACT |
| | REQUEST TO EXIT |
| | MAG LOCK |
| | KEYPAD |
| | KEY SWITCH |
| | CEILING STROBE LIGHT |
| | WALL MOUNT STROBE LIGHT |
| | BUZZER |
| | SECURITY CCTV CAMERA |
| | SECURITY MOTION SENSOR |
| | DOOR ENTRY INTERCOM STATION |
| | OCCUPIED SIGN |
| | DOOR LOCK SIGN |
| | AUDIO/VISUAL EMERGENCY CALL DURESS LIGHT |
| | DOOR PUSH BUTTON |

| HEATING LEGEND | |
|----------------|--|
| SYMBOL | DESCRIPTION |
| | BASEBOARD HEATER C/W BUILT-IN THERMOSTAT |
| | BASEBOARD HEATER C/W BUILT-IN RELAY |
| | CONSOLE HEATER: SURFACE MOUNT, RECESSED |
| | FORCED FLOW HEATER: SURFACE, RECESSED |
| | HOT WATER TANK |
| | RADIANT HEATER |
| | UNIT HEATER |

| EXTERIOR LIGHTING FIXTURE SCHEDULE | | | | | | | |
|------------------------------------|---|--|-------------------|-------|--------|----------|---------------------|
| TYPE | DESCRIPTION | CATALOG NUMBER | LAMPS PER FIXTURE | | | MOUNTING | REMARKS |
| | | | TYPE | WATTS | COLOUR | | |
| A | EXTERIOR WALL PACK WALL LUMINAIRE - DIRECTED LIGHT | BEGA 22215K3 | LED | 3.0 | 3000K | 120 | SURFACE WALL |
| B | EXTERIOR WALL MOUNT PLATE OUT SINGLE INDIRECT | EUREKA LIGHTING 3449-LED-REG-30-120-WHE | LED | 4.9 | 3000K | 120 | SURFACE WALL |
| C | EXTERIOR RECESSED CEILING DOWNLIGHT VORTEX REFLECTOR WIDE BEAM | BEGA 24805K3 | LED | 10.4 | 3000K | 120 | RECESSED CEILING |
| D | EXTERIOR SURFACE CEILING DOWN LIGHT SYRIOS SQUARE 6 FLOOD OPTICS | LUMINIS S0610-L1L15-R30 | LED | 15 | 4000K | 120 | SURFACE CEILING |
| E | EXTERIOR WALL SCONCE SCENA SURFACE MOUNT ROUND 8.5in. | LUMINIS SN805-L1L15-K30 | LED | 12 | 3000K | 120 | SURFACE WALL |
| F | EXTERIOR BOLLARD SCENA BOLLARD | LUMINIS SN805B-L1L15-K30 | LED | 12 | 3000K | 120 | EXTERIOR GROUND |
| G | ARCHITECTURAL WALL SCONCE VISUAL COMFORT FORWARD OPTIC | LITHONIA LIGHTING WDGE1 LED P1 30K 80CRI VF | LED | 10 | 3000K | 120 | SURFACE WALL |

NOTES:
1. FINAL FIXTURE FINISH/TRIM/COLOUR TEMPERATURE SELECTION SHALL BE BY INTERIOR DESIGNER.
2. ALL INTEGRATED LED FIXTURES SHALL BE C/W DRIVERS.
3. PROVIDE DRYWALL ADAPTOR KIT IN ALL FIXTURES IN HARD CEILING.

| ABBREVIATION LEGEND | |
|---------------------|---------------------------------|
| ABBREVIATION | DESCRIPTION |
| F | FLOOR MOUNTED |
| GFI | GROUND FAULT INTERRUPTING, 5 mA |
| GND | GROUND |
| C | CEILING MOUNTED |
| OC | OVER COUNTER |
| WP | WEATHERPROOF |
| RB | RELAY BASE |
| AFI | ARC FAULT CIRCUIT INTERRUPTER |
| MW | MICROWAVE |
| DW | DISHWASHER |
| OAH | OVERALL HEIGHT |
| HP | HEAT PUMP |
| AV | AUDIO/VISUAL EQUIPMENT RACK |
| ATS | AUTOMATIC TRANSFER SWITCH |

| DRAWING LIST | |
|--------------|--|
| DRAWING | DESCRIPTION |
| E1 | ELECTRICAL LEGEND, DRAWING LIST & LIGHT FIXTURE SCHEDULE |
| E2 | ELECTRICAL SITE PLAN |

THE ENGINEER WAIVES ANY AND ALL RESPONSIBILITY AND LIABILITY FOR PROBLEMS WHICH ARISE FROM FAILURE TO FOLLOW THESE PLANS, SPECIFICATIONS AND THE DESIGN INTENT THEY CONVEY, OR FOR PROBLEMS WHICH ARISE FROM OTHER FAILURE TO OBTAIN AND / OR FOLLOW THE ENGINEER'S GUIDANCE WITH RESPECT TO ANY ERRORS, OMISSIONS, INCONSISTENCIES, AMBIGUITIES OR CONFLICTS WHICH ARE ALLEGED.

THIS DRAWING IS THE PROPERTY OF GOODKEY WEEDMARK & ASSOCIATES LIMITED AND ALL COPYRIGHTS ARE RESERVED. NO USE OF THIS DRAWING MAY BE MADE WITHOUT EXPRESS WRITTEN CONSENT.
DO NOT SCALE DRAWINGS

L'INGÉNIEUR DÉCLINE TOUTE RESPONSABILITÉ DÉCOULANT DE PROBLÈMES FAISANT SUITE AU NON RESPECT DES PLANS, DEVIS ET DE L'INTENTION DU CONCEPT OUTILS INDICANT OU DE TOUTS LES PROBLÈMES PROUVANT RÉSULTER DU DÉFAUT D'OBTENIR ET / OU DE SUIVRE LES CONSEILS DE L'INGÉNIEUR EN CE QUI CONCERNE LES ERREURS, OMISSIONS, INCONSISTANCES, AMBIGUITÉS OU CONFLITS ALLEGUÉS.

CE DESSIN EST LA PROPRIÉTÉ LITTÉRAIRE DE GOODKEY WEEDMARK & ASSOCIATES LIMITED ET TOUTS LES DROITS SONT RÉSERVÉS. L'UTILISATION EST INTERDITE SANS LE CONSENTEMENT ÉCRIT DE L'AUTEUR.
NE PAS MESURER LES DESSINS À L'ÉCHELLE

Goodkey Weedmark
Consulting Engineers

GOODKEY WEEDMARK & ASSOCIATES LIMITED
1688 Woodward Dr. Ottawa Ontario Canada K2C 3R8
613 727-5111 Voice
613 727-5115 Fax
www.gwal.com Web

Project north
Nord du projet

Seal/Scieu

Project/Projet
ROCHESTER AND BALSAM
245-267 ROCHESTER ST.
OTTAWA, ON. K1R 7M9

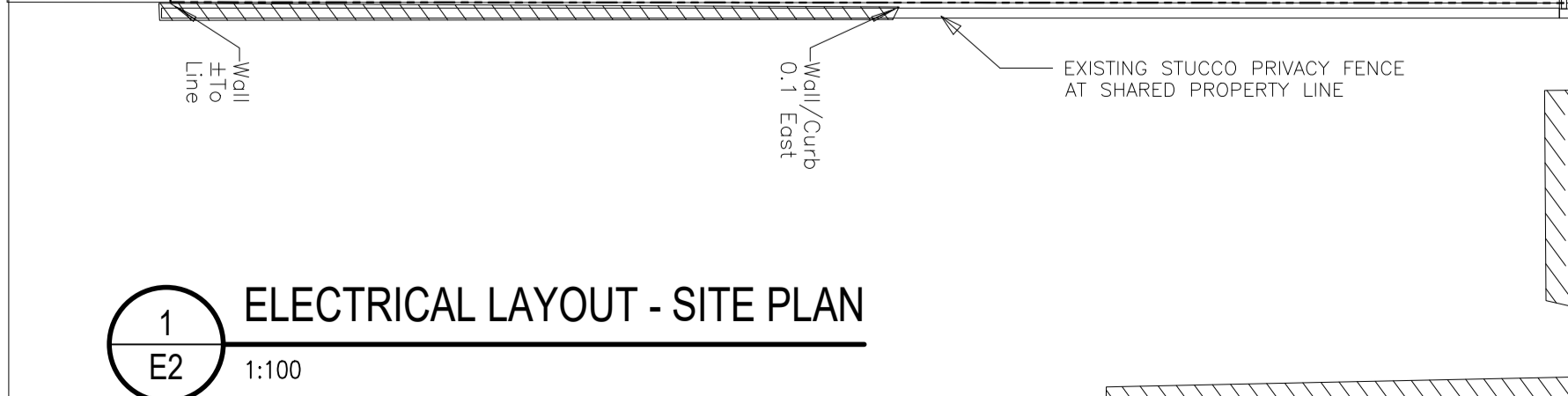
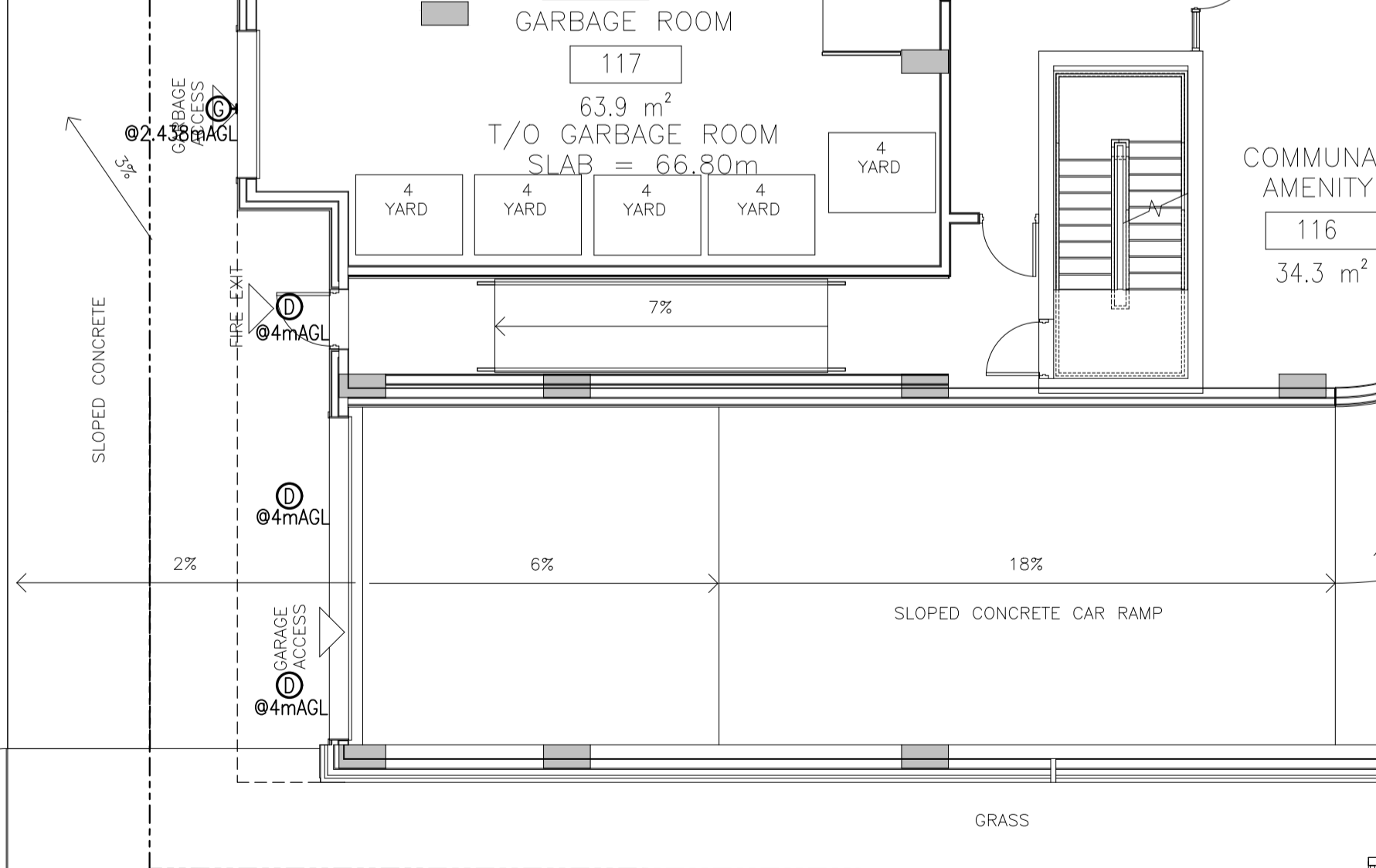
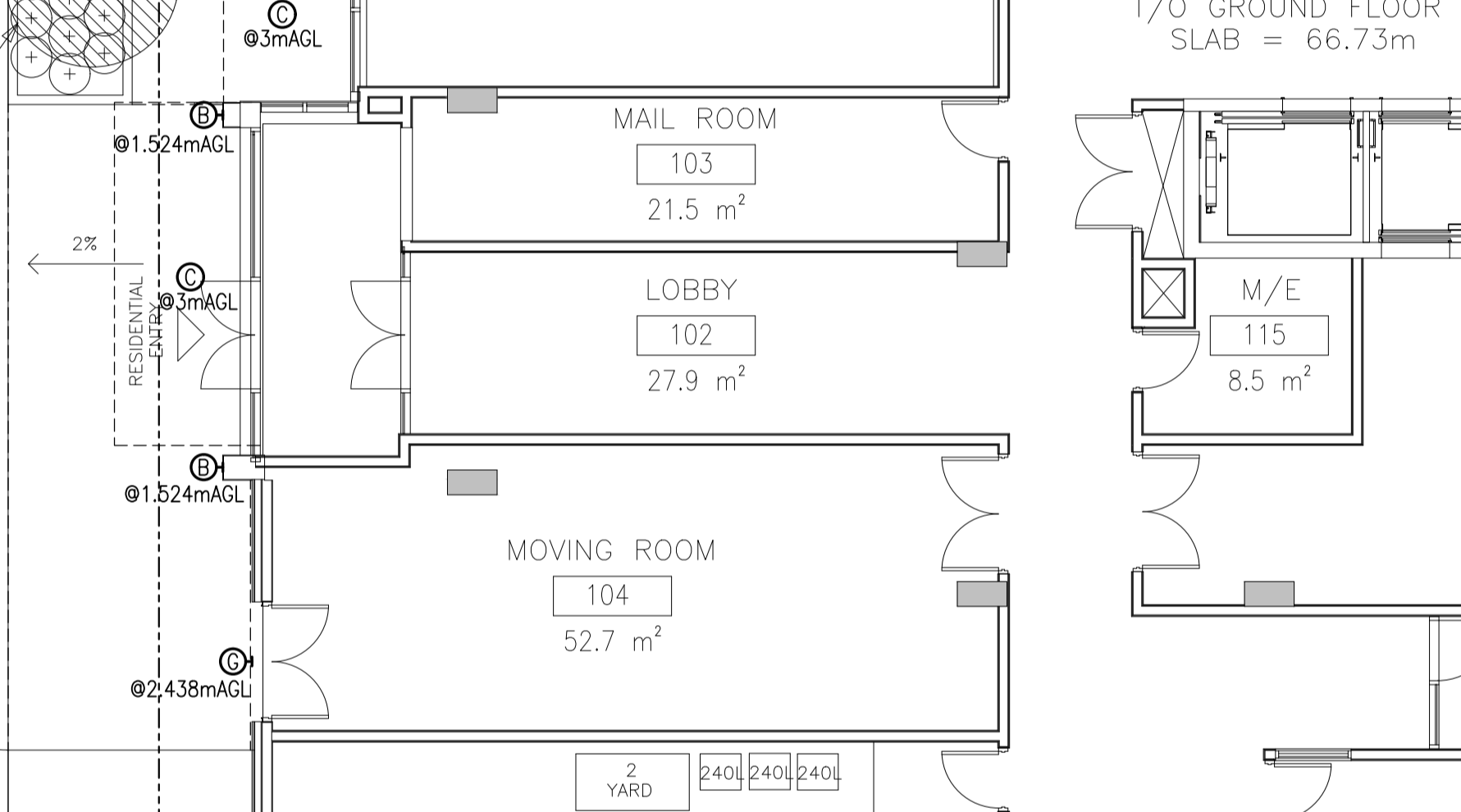
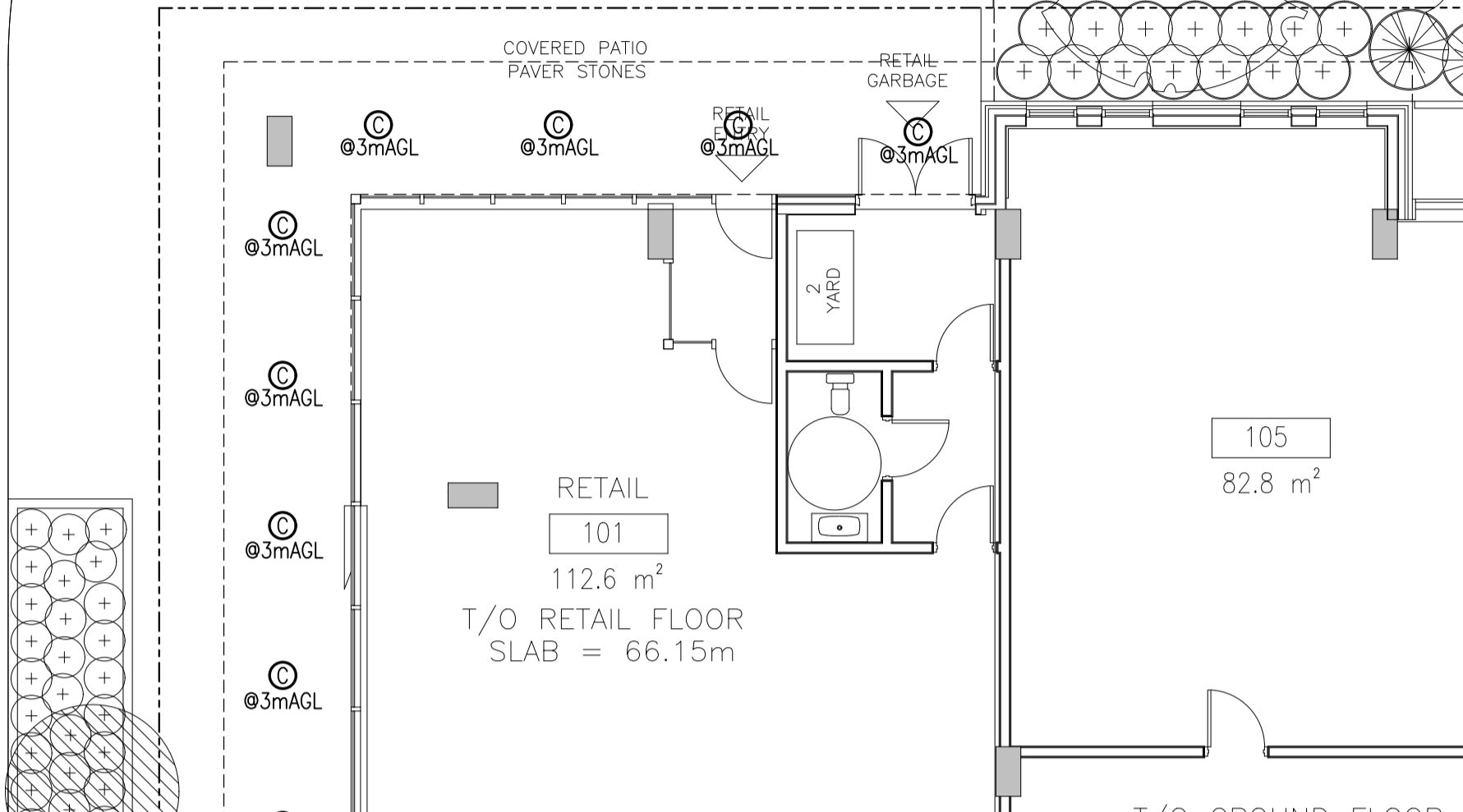
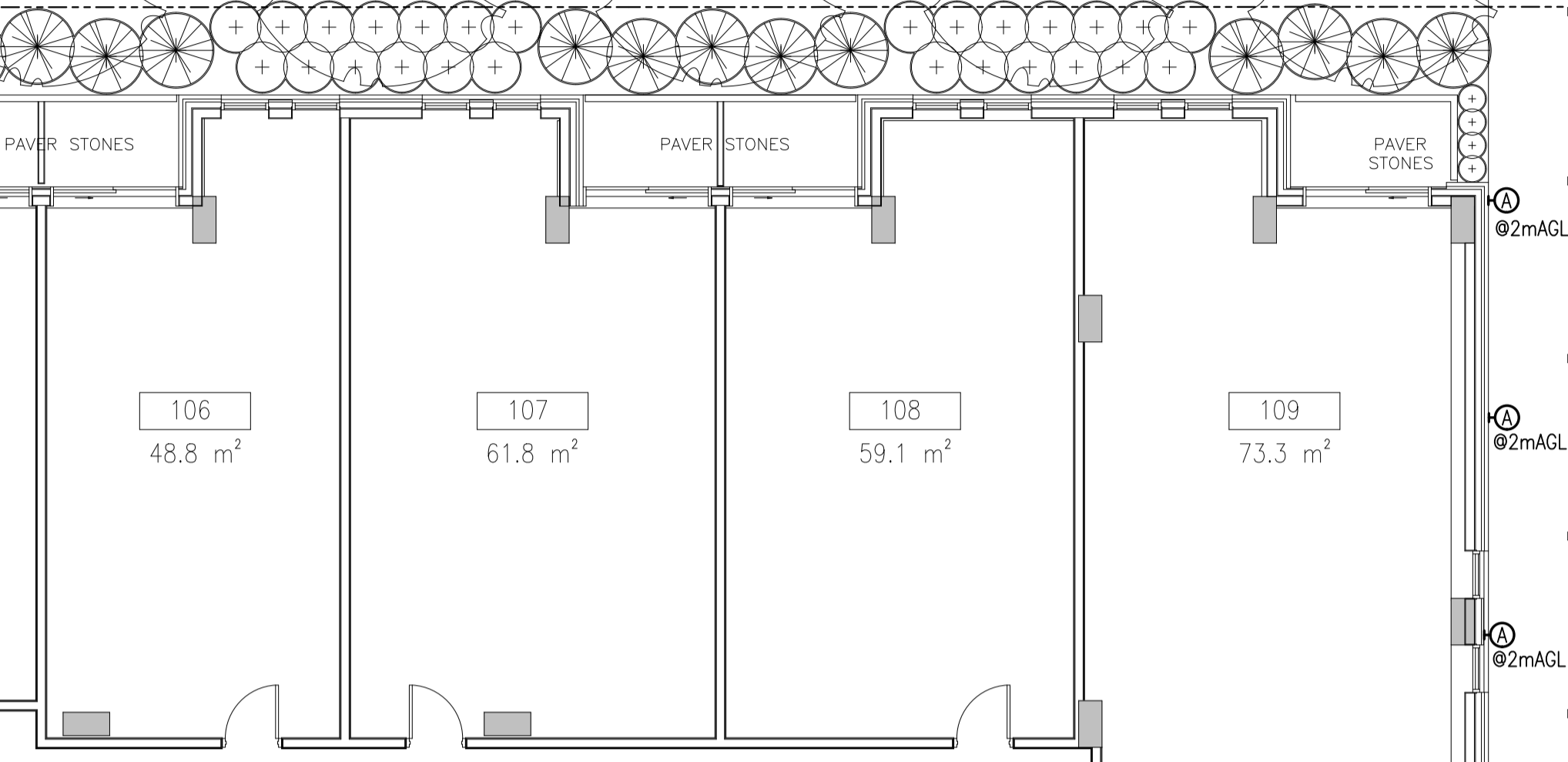
Drawing title/Titre du dessin
**ELECTRICAL TITLE PAGE,
SYMBOL LEGEND,
LIGHT FIXTURE SCHEDULE
& DRAWING LIST**

| | | |
|----------------------------|-----------|---------------------------------------|
| Scale Échelle | AS NOTED | Project no./No. du projet 2022-456 |
| Design by Conçu par | B. POTTER | Drawing/Dessin |
| Drawn by Dessiné par | B. POTTER | E1 |
| Reviewed by Examiné par | D. VYAS | |

ROCHESTER STREET

EXISTING CONCRETE SIDEWALK

GRASS



1 ELECTRICAL LAYOUT - SITE PLAN
E2 1:100

Client

| DATE | REVISION | REF |
|------------|----------------------|-----|
| 2022-10-07 | ISSUED FOR SITE PLAN | 1 |
| 2022-09-26 | ISSUED FOR REVIEW | - |

THE ENGINEER WAIVES ANY AND ALL RESPONSIBILITY AND LIABILITY FOR PROBLEMS WHICH ARISE FROM FAILURE TO FOLLOW THESE PLANS, SPECIFICATIONS AND THE DESIGN INTENT THEY CONVEY, OR FOR PROBLEMS WHICH ARISE FROM OTHER FAILURE TO OBTAIN AND / OR FOLLOW THE ENGINEER'S GUIDANCE WITH RESPECT TO ANY ERRORS, OMISSIONS, INCONSISTENCIES, AMBIGUITIES OR CONFLICTS WHICH ARE ALLEGED.

THIS DRAWING IS THE PROPERTY OF GOODKEY WEEDMARK & ASSOCIATES LIMITED AND ALL COPYRIGHTS ARE RESERVED. NO USE OF THIS DRAWING MAY BE MADE WITHOUT EXPRESS WRITTEN CONSENT.

DO NOT SCALE DRAWINGS

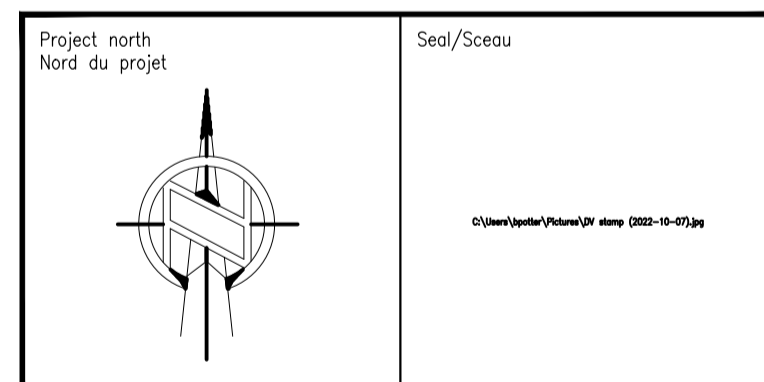
L'INGÉNIEUR DÉCLINE TOUTE RESPONSABILITÉ DÉCOULANT DE PROBLÈMES FAISANT SUITE AU NON RESPECT DES PLANS, DEVIS ET DE L'INTENTION DU CONCEPT QU'ILS INDICENT OU DE TOUTS LES PROBLÈMES POUVANT RÉSULTER DU DÉFAUT D'OBTENIR ET / OU DE SUIVRE LES CONSEILS DE L'INGÉNIEUR EN CE QUI CONCERNE LES ERREURS, OMISSIONS, INCONSISTANCES, AMBIGUITÉS OU CONFLITS ALLEGÉS.

CE Dessin EST LA PROPRIÉTÉ LITTÉRAIRE DE GOODKEY WEEDMARK & ASSOCIATES LIMITED ET TOUTS LES DROITS SONT RÉSERVÉS. L'UTILISATION EST INTERDITE SANS LE CONSENTEMENT ÉCRIT DE L'AUTEUR.

NE PAS MESURER LES Dessins À L'ÉCHELLE

Goodkey Weedmark
Consulting Engineers

GOODKEY WEEDMARK & ASSOCIATES LIMITED
1688 Woodward Dr. 613 727-5111 Voice
Ottawa Ontario 613 727-5115 Fax
Canada K2C 3R8 www.gwol.com Web



Project/Projet
ROCHESTER AND BALSAM
245-267 ROCHESTER ST.
OTTAWA, ON. K1R 7M9

Drawing title/Titre du dessin
ELECTRICAL LAYOUT
SITE PLAN

| | | |
|----------------------------|-----------|---------------------------------------|
| Scale Échelle | AS NOTED | Project no./No. du projet 2022-456 |
| Design by Conçu par | B. POTTER | Drawing/Dessin |
| Drawn by Dessiné par | B. POTTER | E2 |
| Reviewed by Examiné par | D. WAS | |