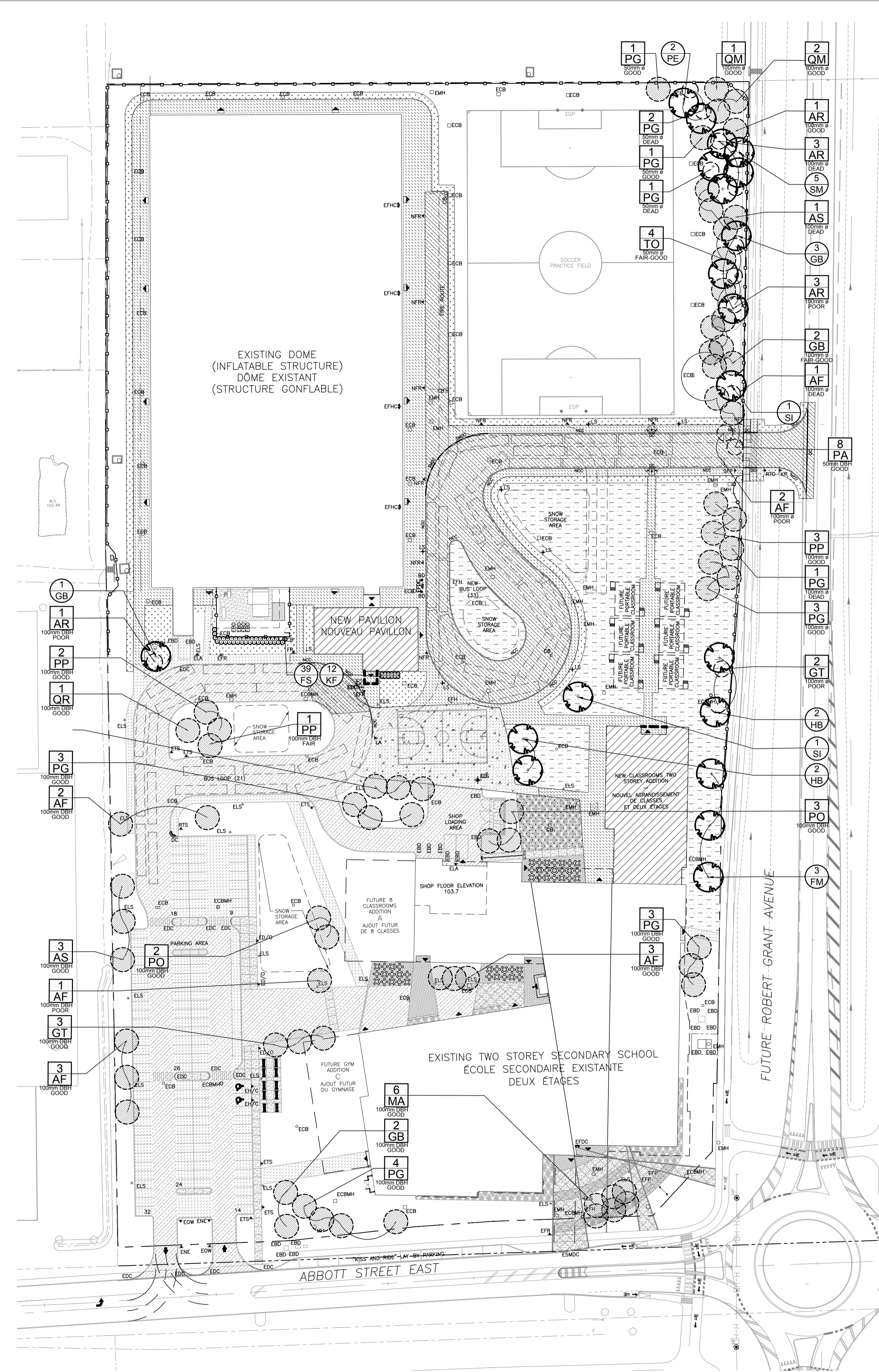
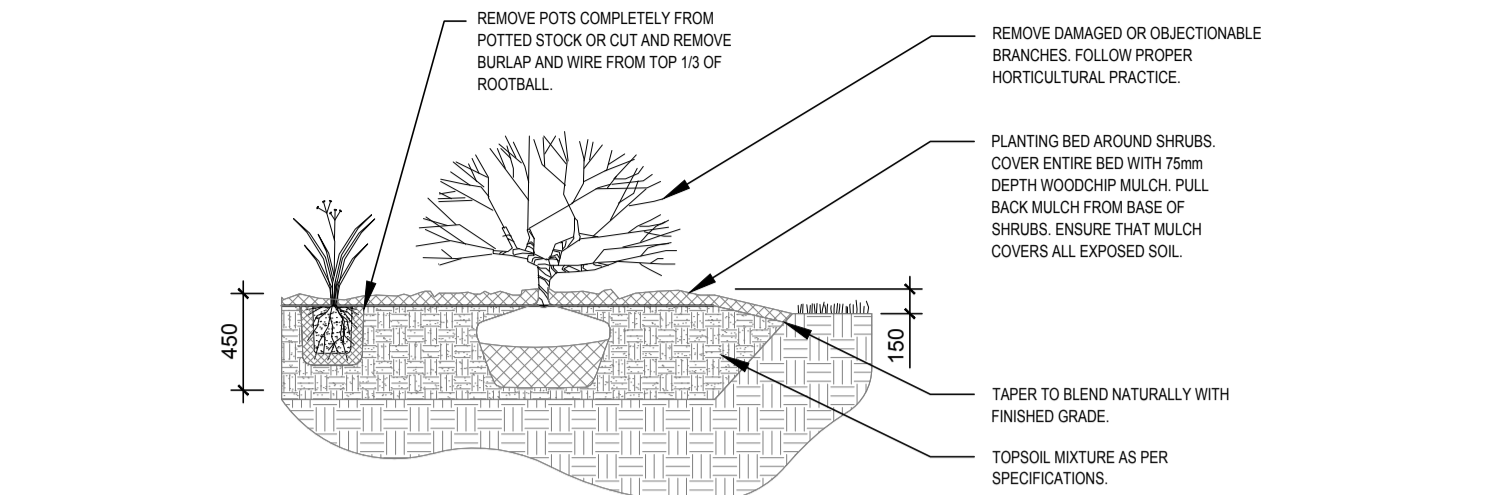


5	0	2023/03/23	REVISED PER NEW SITE PLAN
4	0	2023/01/13	REVISED PER CITY COMMENTS
3	0	2022/12/16	ISSUED FOR BUILDING PERMIT
2	0	2022/11/25	ISSUED FOR 66% COMPLETION
1	0	2022/11/01	ISSUED FOR SITE PLAN APPROVAL

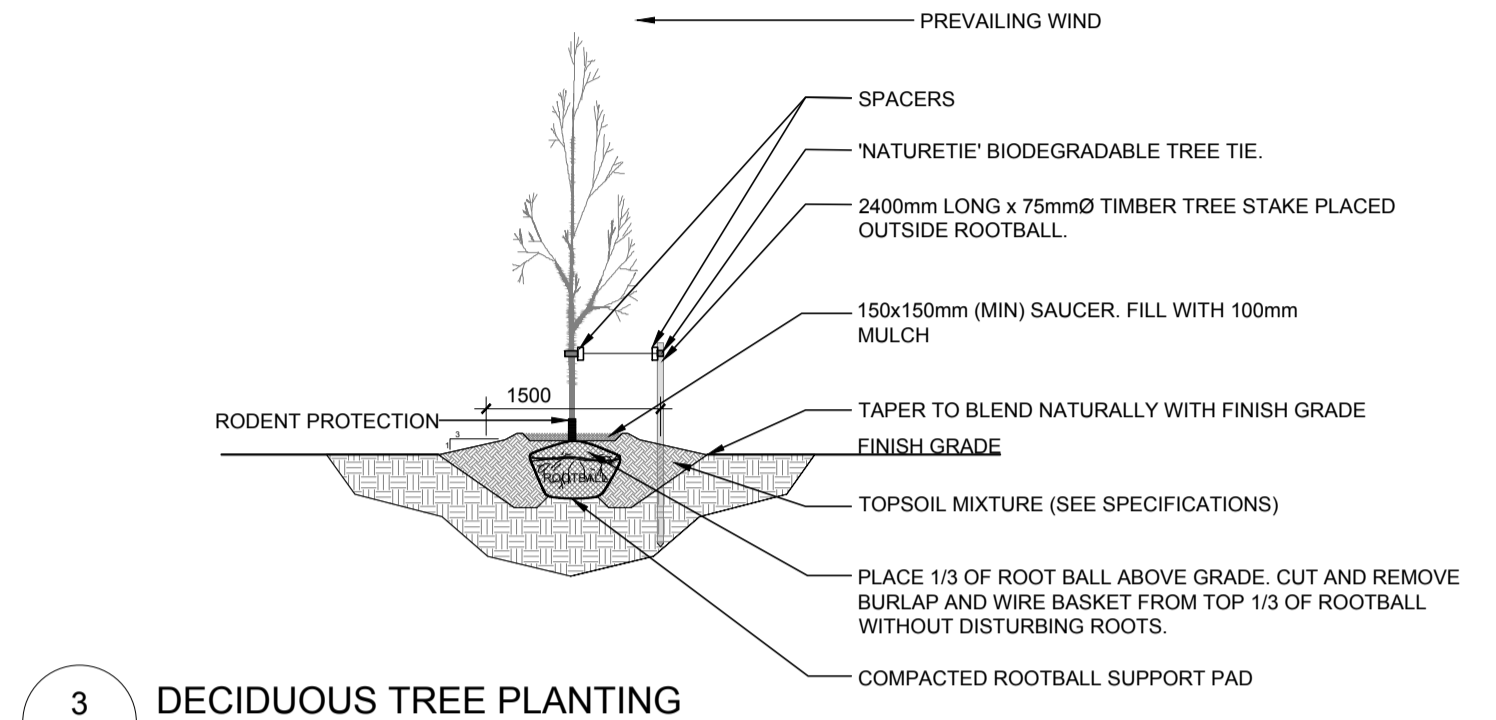
ISSUE NO.	REV. NO.	DATE	ISSUE
-----------	----------	------	-------



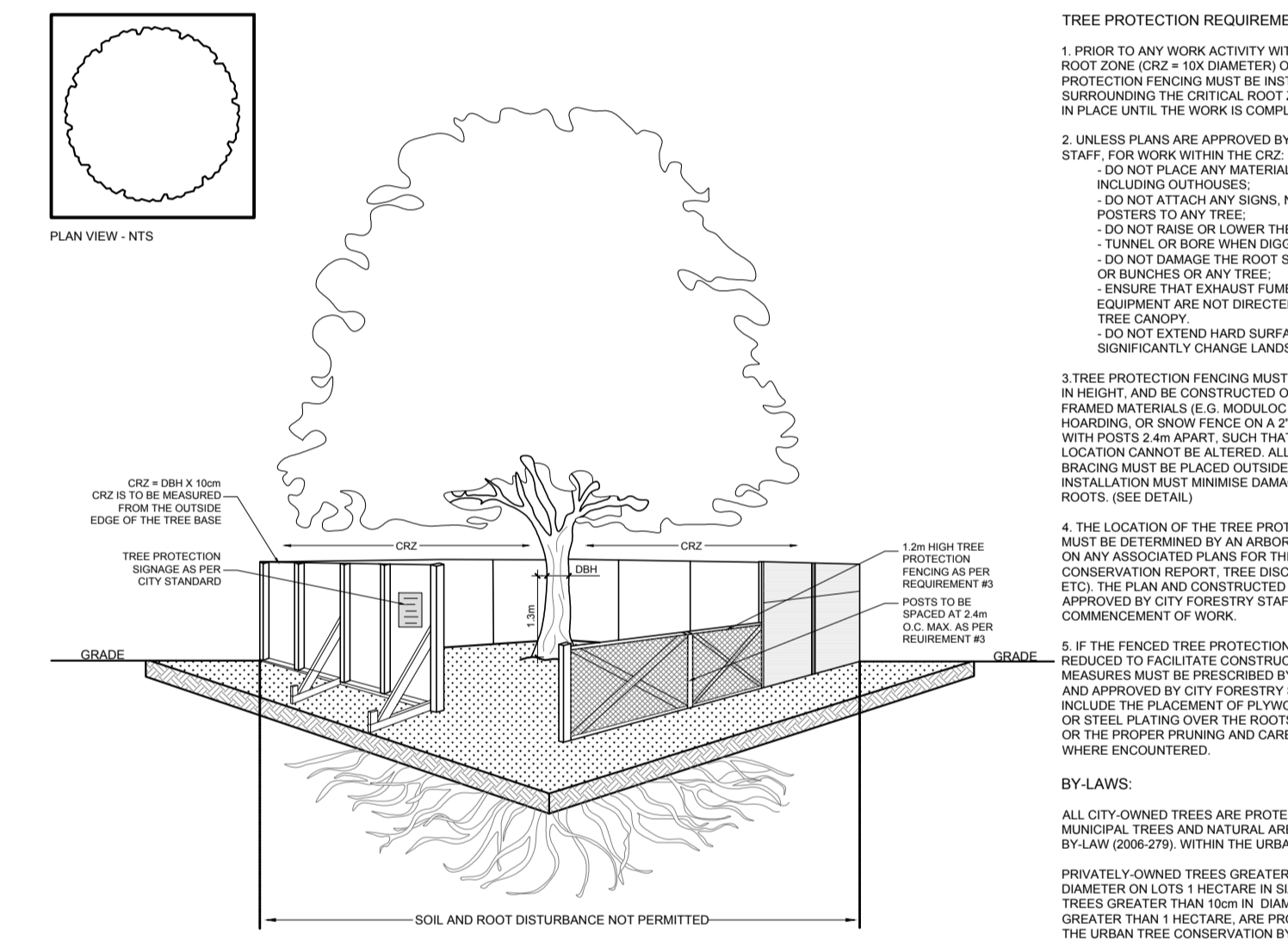
1
L.1
TREE CONSERVATION REPORT & LANDSCAPE PLAN
SCALE 1:750



2
L.1
SHRUB / ORNAMENTAL GRASS PLANTING
SCALE: NTS



3
L.1
DECIDUOUS TREE PLANTING
SCALE: NTS



4
L.1
TREE PROTECTION FENCE
SCALE: NTS

PROPOSED PLANT LIST						
KEY	QTY	BOTANICAL NAME	COMMON NAME	SIZE	CONDITION	REMARKS
TREES						
FM	3	Acer x freemanii 'Armstrong'	Armstrong Maple	60mm cal.	B&B	Male Tree
GB	4	Ginkgo biloba	Maidenhair Tree	60mm cal.	B&B	
HB	4	Celtis occidentalis	Hackberry	60mm cal.	B&B	
SM	5	Acer saccharum	Sugar Maple	60mm cal.	B&B	
PE	2	Ulmus wilsoniana 'Prospector'	Prospector Elm	60mm cal.	B&B	
SI	2	Acer saccharinum	Silver Maple	60mm cal.	B&B	
SHRUBS						
FS	39	Sorbaria sorbifolia 'Sem'	Sem False Spirea	600mm ht.	Potted	Space 1000mm o.c.
ORNAMENTAL GRASSES						
KF	12	Calamagrostis x acutiflora 'Karl Foerster'	Feather Reed Grass	250mm pot.	Potted	Space 800mm o.c.

EXISTING TREE LIST						
KEY	QTY	BOTANICAL NAME	COMMON NAME	SIZE	CONDITION	REMARKS
AF	12	Acer x freemanii	Freeman's Maple	100mm dbh	DEAD-GOOD	See plan
AR	8	Acer rubrum	Red Maple	100mm dbh	DEAD-GOOD	See plan
AS	4	Acer saccharum	Sugar Maple	100mm dbh	DEAD-GOOD	See plan
GB	4	Ginkgo biloba	Maidenhair Tree	100mm dbh	FAIR-GOOD	To Remain
GT	5	Gleditsia triacanthos	Honey Locust	100mm dbh	POOR-GOOD	See plan
MA	6	Malus 'Profusion'	Profusion Crabapple	100mm dbh	POOR	To Remain
PA	8	Picea abies	Norway Spruce	100mm dbh	GOOD	See plan
PG	19	Picea glauca	White Spruce	100mm dbh	DEAD-GOOD	See plan
PO	5	Picea omorika	Serbian Spruce	100mm dbh	GOOD	To Remain
PP	6	Picea pungens	Colorado Spruce	100mm dbh	FAIR-GOOD	To Remain
QM	1	Quercus macrocarpa	Bur Oak	100mm dbh	GOOD	To Remain
QR	1	Quercus rubra	Red Oak	100mm dbh	GOOD	To Remain
TO	4	Thuja occidentalis	Eastern White Cedar	100mm dbh	FAIR-GOOD	To Remain

LEGEND

- EXISTING TREE TO REMAIN
- EXISTING TREE TO BE REMOVED
- PROPOSED SHRUBS / ORNAMENTAL GRASSES
- PROPOSED DECIDUOUS TREE
- PROPOSED SODDED GRASS AREA
- PROPOSED SEEDED GRASS AREA

GENERAL NOTES:

- It is the responsibility of the appropriate contractor or official to report any errors, omissions or discrepancies on this plan with actual site conditions to the Landscape Architect before proceeding with construction.
- The contractor is to notify all utility companies and authorities prior to any excavation and ascertain locations of underground services.
- The contractor is to reinstate all areas and items damaged as a result of construction activity.
- The contractor is to comply with all pertinent codes and by-laws.
- The contractor is to maintain a positive surface run-off throughout the entire construction period.
- The Landscape Architect is not responsible for subsurface conditions.
- The contractor is to identify all existing trees to remain on site with the Landscape Architect prior to construction.
- The contractor is to stake the proposed location of all plant material in conjunction with the Landscape Architect prior to excavation.
- Minimum distances for selected trees are as follows:
 - Building Foundations 7.5m
 - Hydro Transformers 3.0m
 - Curb 2.5m
 - Sidewalks 1.5m
 - Public Streets 2.5m
 - Underground Services 1.5m
 - Bell and cable boxes 1.0m
 - Fire Hydrants 2.5m
 - Driveways 1.2m
- All trees within 1m of underground utility trenches are to be excavated by hand.
- Remove all protective wrapping from tree trunks after installation.
- Staking of trees shall only be performed if necessary.
- Ensure that mulch is pulled back a min. distance of 75mm from base of tree trunk.

TRUE NORTH PLAN NORTH

EDWARD J. CUHACI & ASSOCIATES ARCHITECTS Inc.
171 Stater St, Suite 100, Ottawa, Ontario, K1P 5H7
Fax: (613) 236-1944 Telephone: (613) 236-7135 E-mail: info@cuhaci.com

PROJECT TITLE/TITRE DU PROJET
École secondaire catholique Paul-Desmarais - Addition
5315 Abbott St E, K2S 0X3 Stittsville, ON

DRAWING TITLE/TITRE DU DESSIN
TREE CONSERVATION REPORT & LANDSCAPE PLAN

SCALE ÉCHELLE	1:750	PROJ. No	ISSUE No	REV. No
DRAWN BY DESSINÉ PAR	M.L.	DRAWING/DESSIN	5	0
CHECKED BY VÉRIFIÉ PAR	J.L.	L.1		
DATE	SEPTEMBER 2022	FICHER ACAD FILE: PDL1.DWG		