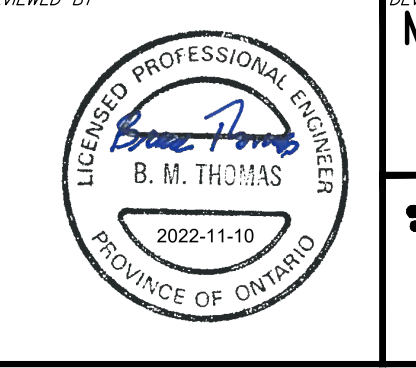
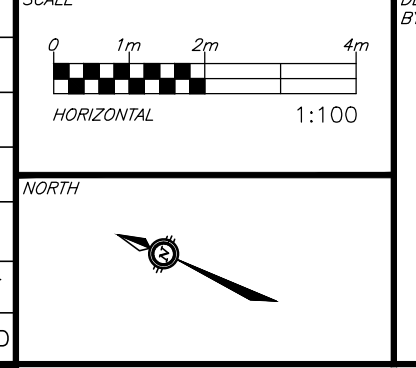


**GENERAL NOTES FOR GRADING**

- IT SHALL BE THE BUILDER'S RESPONSIBILITY TO ENSURE THAT GRADING AROUND HYDRANTS, TRANSFORMERS, AND UTILITY PEDESTALS, ETC., MEET CURRENT CITY OF OTTAWA, HYDRO AND UTILITY COMPANY REQUIREMENTS.
- ALL GROUND SURFACES SHALL BE EVENLY GRADED WITHOUT PONDING AREAS AND WITHOUT LOW POINTS EXCEPT WHERE APPROVED SWALE OR CATCH BASIN OUTLETS ARE PROVIDED.
- CONTRACTOR TO ADJUST EXISTING CATCH BASINS, MANHOLES, FIRE HYDRANTS, VALVE CHAMBERS AND VALVE BOXES TO FINAL GRADE AS REQUIRED.
- CONTRACTOR SHALL TAKE ALL NECESSARY PRECAUTIONS TO PROTECT EXISTING FOUNDATIONS OF ADJACENT BUILDINGS DURING EXCAVATION AND CONSTRUCTION PERIOD.
- GRADING IN GRASSED AREAS WILL BE BETWEEN 2% TO 7%. GRADES IN EXCESS OF 7% WILL REQUIRE A MAXIMUM 3:1 TERRACING.
- NO EXCESS DRAINAGE, DURING OR AFTER CONSTRUCTION, TO BE DIRECTED TOWARDS NEIGHBORING PROPERTIES.
- EXISTING DRAINAGE PATTERNS TO BE MAINTAINED.
- ENSURE POSITIVE DRAINAGE AWAY FROM FOUNDATION.
- NO ALTERATION TO EXISTING GRADES ON THE PROPERTY LINES.
- UNDERSIDE OF FOOTING TO BE MINIMUM 1.5m BELOW FINISHED GRADE OR INSULATION TO BE PROVIDED. TOP OF FOUNDATION TO BE MAINTAINED 0.15m ABOVE FINISHED GRADE.
- FOR ADDITIONAL NOTES REFER TO NOTES AND LEGEND SHEET, DRAWING C001

**CAUTION**  
 THE POSITION OF ALL POLE LINES, CONDUITS, WATERMANS, SEWERS AND OTHER UNDERGROUND AND OVERGROUND UTILITIES AND STRUCTURES IS NOT NECESSARILY SHOWN ON THE CONTRACT DRAWINGS, AND WHERE SHOWN, THE ACCURACY OF THE POSITION OF SUCH UTILITIES AND STRUCTURES IS NOT GUARANTEED. BEFORE STARTING WORK, DETERMINE THE EXACT LOCATION OF ALL SUCH UTILITIES AND STRUCTURES AND ASSUME ALL LIABILITY FOR DAMAGE TO THEM.

REV	REVISION DESCRIPTION	DATE	BY	APPD
1	ISSUED FOR SITE PLAN APPROVAL	09/11/22	SAB	BMT



**McCORMICK PARK DEVELOPMENTS**  
 1600 LAPERRIERE AVENUE, SUITE 205  
 OTTAWA, ON. K1M 2H9  
 613.421.1515

**exp.**  
 exp Services Inc.  
 1-1-613.688.1899 | F-1-613.225.7330  
 1000 St. Lawrence Drive, Unit 100  
 Ottawa, ON K2B 8H6  
 Canada  
 www.exp.com

• BUILDINGS • EARTH & ENVIRONMENT • ENERGY •  
 • INDUSTRIAL • INFRASTRUCTURE • SUSTAINABILITY •

DESIGN	PROJECT
SAB	266-268 CARRUTHERS 177-179 ARMSTRONG STREET OTTAWA, ONTARIO.
BMT	
BMT	
SAB	
BMT	
BMT	
BMT	

PROJECT No.	DATE	TITLE
OTT-22014656-AG	JUNE 2022	SITE GRADING PLAN
		C200

File No. D07-12-20-009, D07-02-20-0052 Plan No. 18170