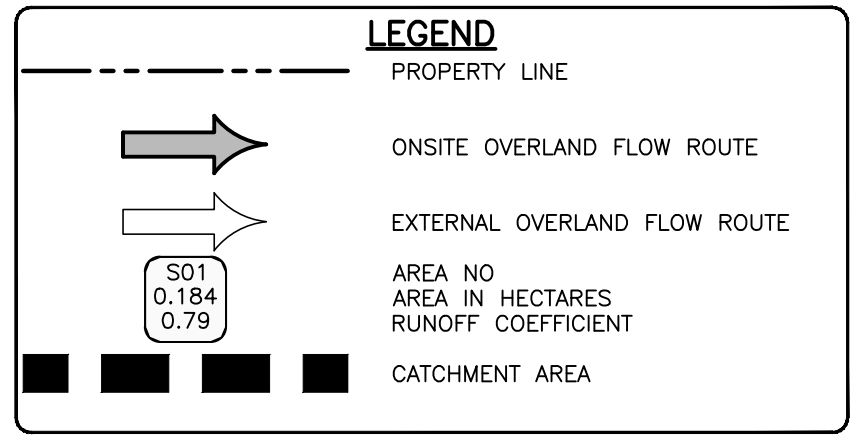
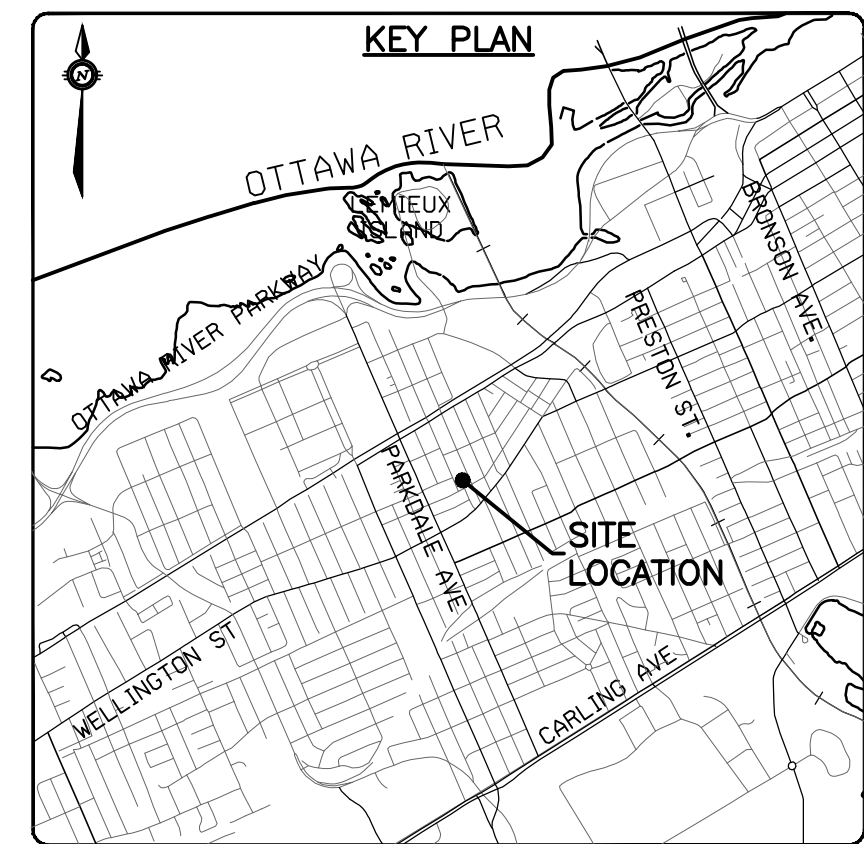
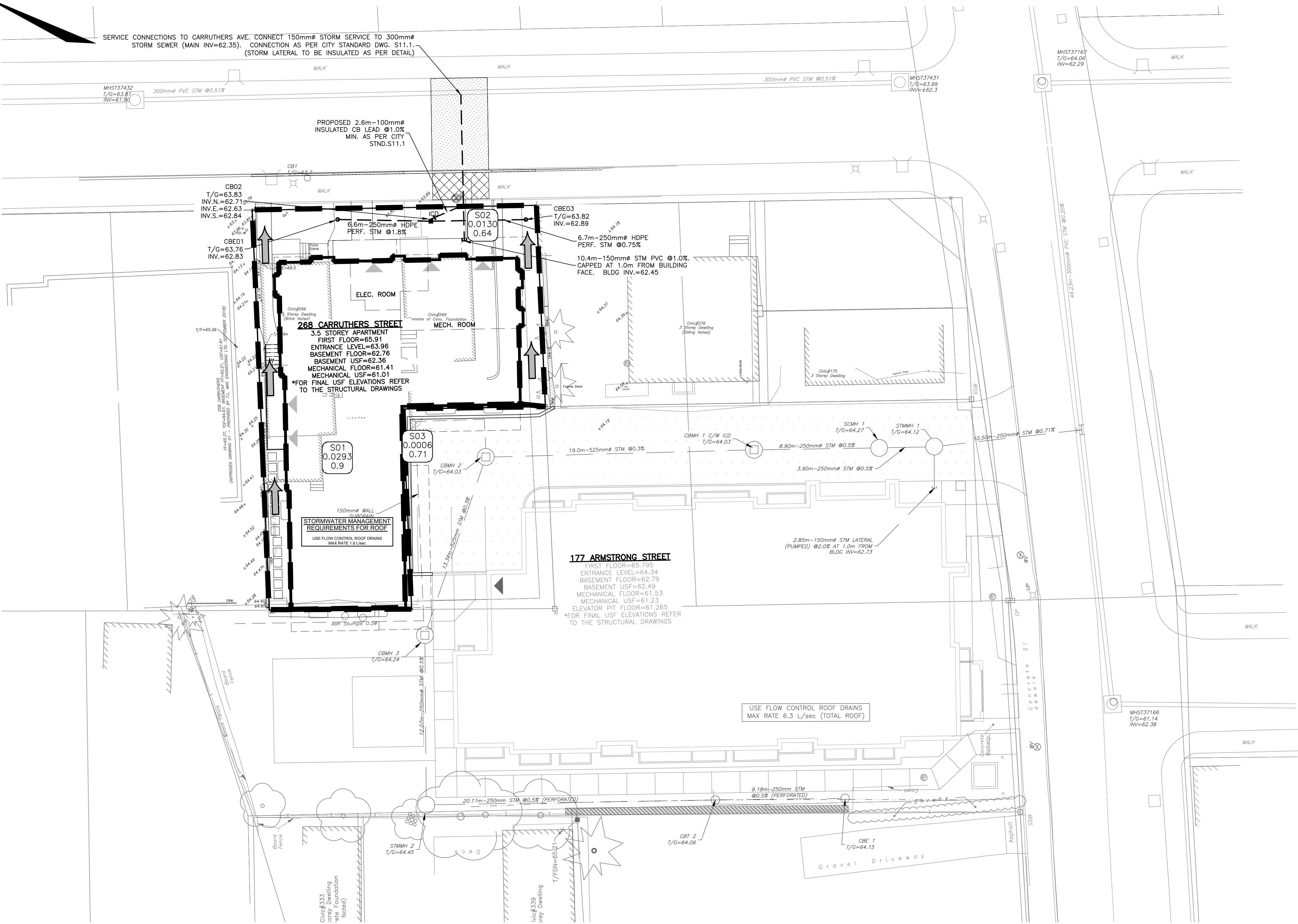


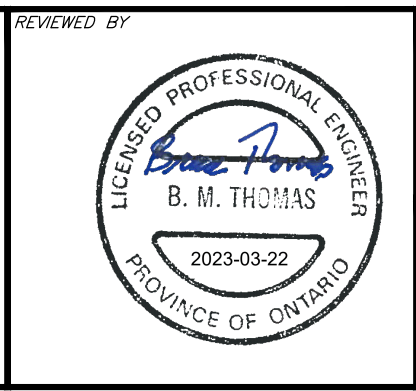
SERVICE CONNECTIONS TO CARRUTHERS AVE. CONNECT 150mm $\varnothing$  STORM SERVICE TO 300mm $\varnothing$  STORM SEWER (MAIN INV=62.35). CONNECTION AS PER CITY STANDARD DWG. S11.1. (STORM LATERAL TO BE INSULATED AS PER DETAIL)



ICD SUMMARY TABLE				
Control Location	Max Flow (L/sec)	Max Head (m)	Type	Model
CB02	2.3	1.08	IPEX TEMPEST	LMF 50

**CAUTION**  
THE POSITION OF ALL POLE LINES, CONDUITS, WATERMANS, SEWERS AND OTHER UNDERGROUND AND OVERGROUND UTILITIES AND STRUCTURES IS NOT NECESSARILY SHOWN ON THE CONTRACT DRAWINGS, AND WHERE SHOWN, THE ACCURACY OF THE POSITION OF SUCH UTILITIES AND STRUCTURES IS NOT GUARANTEED. BEFORE STARTING WORK, DETERMINE THE EXACT LOCATION OF ALL SUCH UTILITIES AND STRUCTURES AND ASSUME ALL LIABILITY FOR DAMAGE TO THEM.

REV	REVISION DESCRIPTION	DATE	BY	APPD
2	REVISED AS PER CITY COMMENTS	21/03/23	SAB	BMT
1	ISSUED FOR SITE PLAN APPROVAL	09/11/22	SAB	BMT



DEVELOPER  
**MCCORMICK PARK DEVELOPMENTS**  
1600 LAPERRIERE AVENUE, SUITE 205  
OTTAWA, ON. K1M 2H9  
613.421.1515

exp. Services Inc.  
1-813-688-1899 | F-1-613-225-7330  
3025 Deschênes Drive, Unit 100  
Ottawa, ON K2B 8H6  
Canada  
www.exp.com

BASEPLAN: SAB  
DESIGN: BMT  
CHECKED: BMT  
CAD: SAB  
PROJECT MANAGER: BMT  
APPROVED: BMT

PROJECT  
**CARRUTHERS AVENUE DEVELOPMENT**  
266-268 CARRUTHERS  
OTTAWA, ONTARIO.

PROJECT NO. OTT-22014656-AG  
SURVEY: FMW/FSD  
DATE: JUNE 2022

TITLE  
**STORM DRAINAGE PLAN**

DRAWING NO. C400