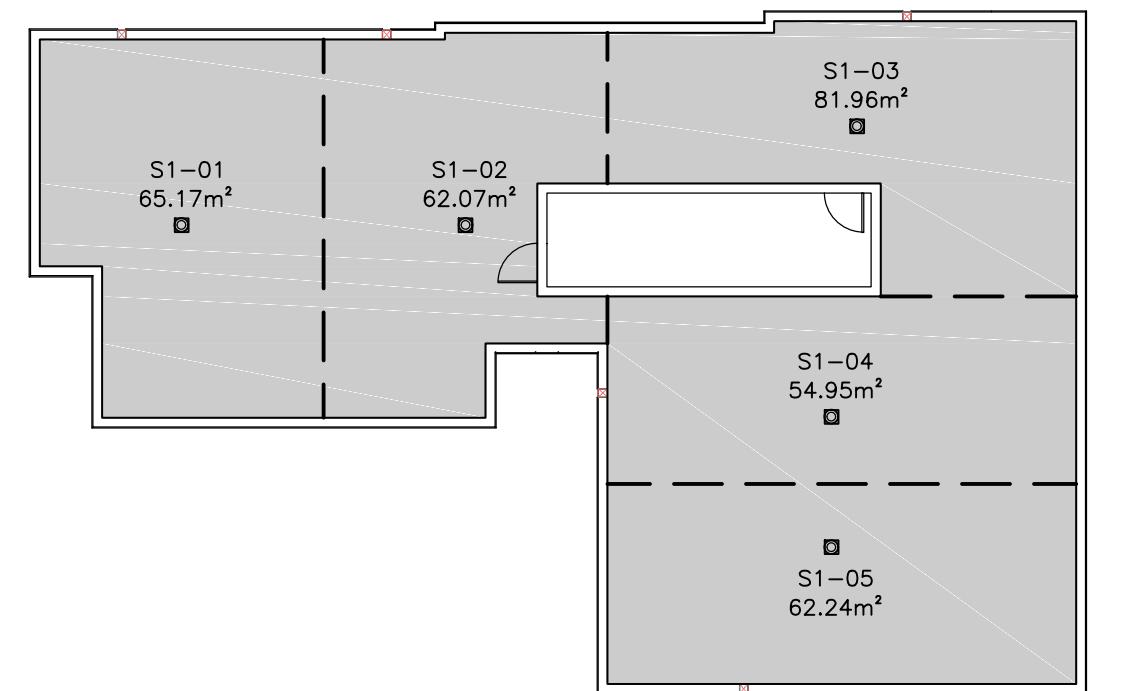


**CARRUTHERS AVENUE**



**ROOF PONDING**

AREA #	100 YEAR PONDING DEPTH (mm)	WEIR TYPE	NO. OF WEIRS PER DRAIN	WEIR POSITION
S1-01	134	WATTS ACCUTROL	1	2 - CLOSED
S1-02	133	WATTS ACCUTROL	1	2 - CLOSED
S1-03	137	WATTS ACCUTROL	1	2 - CLOSED
S1-04	131	WATTS ACCUTROL	1	2 - CLOSED
S1-05	133	WATTS ACCUTROL	1	2 - CLOSED

**PROPOSED SEWER TABLE**

STRUCTURE	U/S	D/S	TYPE	INVERT ELEV (m)		NOMINAL DIA. (mm)	LENGT H (m)	Type	Class	Comment
				U/S	D/S					
CBE01		CB02	STM	62.830	62.710	250	6.60	HDPE	BOSS 2000	PERFORATED S29
CBE03		CB02	STM	62.890	62.840	250	6.70	HDPE	BOSS 2000	PERFORATED S29
CB02		WYE CONN.	STM	62.630	62.410	100	2.60	PVC	DR35	SOLID
BLDG. CAP		EX. MAIN CONN.	STM	62.450	62.350	150	10.40	PVC	DR35	SOLID
BLDG. CAP		EX. MAIN CONN.	SAN	62.400	62.120	150	2.60	PVC	DR35	SOLID

**STRUCTURE TABLE**

STRUCTURE NUMBER	TYPE	LID ELEV (m)	INVERT IN (m) and DIA (mm)		INVERT OUT (m) and DIA (mm)		STRUCTURE			Comment	
			U/S	D/S	U/S	D/S	SIZE	REFERENCE	FRAME		COVER
CBE01	STORM	63.76			62.830 (S)	(250)	250 DIA	City of Ottawa S31	Ottawa S31	Ottawa S31	
CB02	STORM	63.83	62.710 (N)	(250)	62.830 (E)	(100)	100 DIA	OPSD 705 010	OPSD 400 020	OPSD 400 020	
CBE03	STORM	63.82	62.840 (S)	(250)	62.890 (N)	(250)	250 DIA	City of Ottawa S31	Ottawa S31	Ottawa S31	

**CAUTION**  
THE POSITION OF ALL POLE LINES, CONDUITS, WATERMANS, SEWERS AND OTHER UNDERGROUND AND OVERGROUND UTILITIES AND STRUCTURES IS NOT NECESSARILY SHOWN ON THE CONTRACT DRAWINGS, AND WHERE SHOWN, THE ACCURACY OF THE POSITION OF SUCH UTILITIES AND STRUCTURES IS NOT GUARANTEED. BEFORE STARTING WORK, DETERMINE THE EXACT LOCATION OF ALL SUCH UTILITIES AND STRUCTURES AND ASSUME ALL LIABILITY FOR DAMAGE TO THEM.

REV	REVISION DESCRIPTION	DATE	BY	APPD
1	ISSUED FOR SITE PLAN APPROVAL	09/11/22	SAB	BMT

DESIGNED BY: **J.L. FITZPATRICK**  
LICENSED PROFESSIONAL ENGINEER  
PROVINCE OF ONTARIO  
2022-11-10

REVIEWED BY: **B. M. THOMAS**  
LICENSED PROFESSIONAL ENGINEER  
PROVINCE OF ONTARIO  
2022-11-10

DEVELOPER: **MCCORMICK PARK DEVELOPMENTS**  
1600 LAPERRIERE AVENUE, SUITE 205  
OTTAWA, ON. K1M 2H9  
613.421.1515

exp Services Inc.  
1-813-688-1899 | T: +1-613-225-7330  
2025 Carleton Place, Unit 100  
Ottawa, ON K2B 8H6  
Canada  
www.exp.com

BASE PLAN: SAB  
DESIGN: BMT  
CHECKED: BMT  
CAD: SAB  
PROJECT MANAGER: BMT  
APPROVED: BMT

PROJECT No. **OTT-22014656-AG**  
SURVEY **FWM/FSD**  
DATE **JUNE 2022**  
DRAWING No. **C100**

**266-268 CARRUTHERS**  
**177-179 ARMSTRONG STREET**  
OTTAWA, ONTARIO.

**SITE SERVICING PLAN**