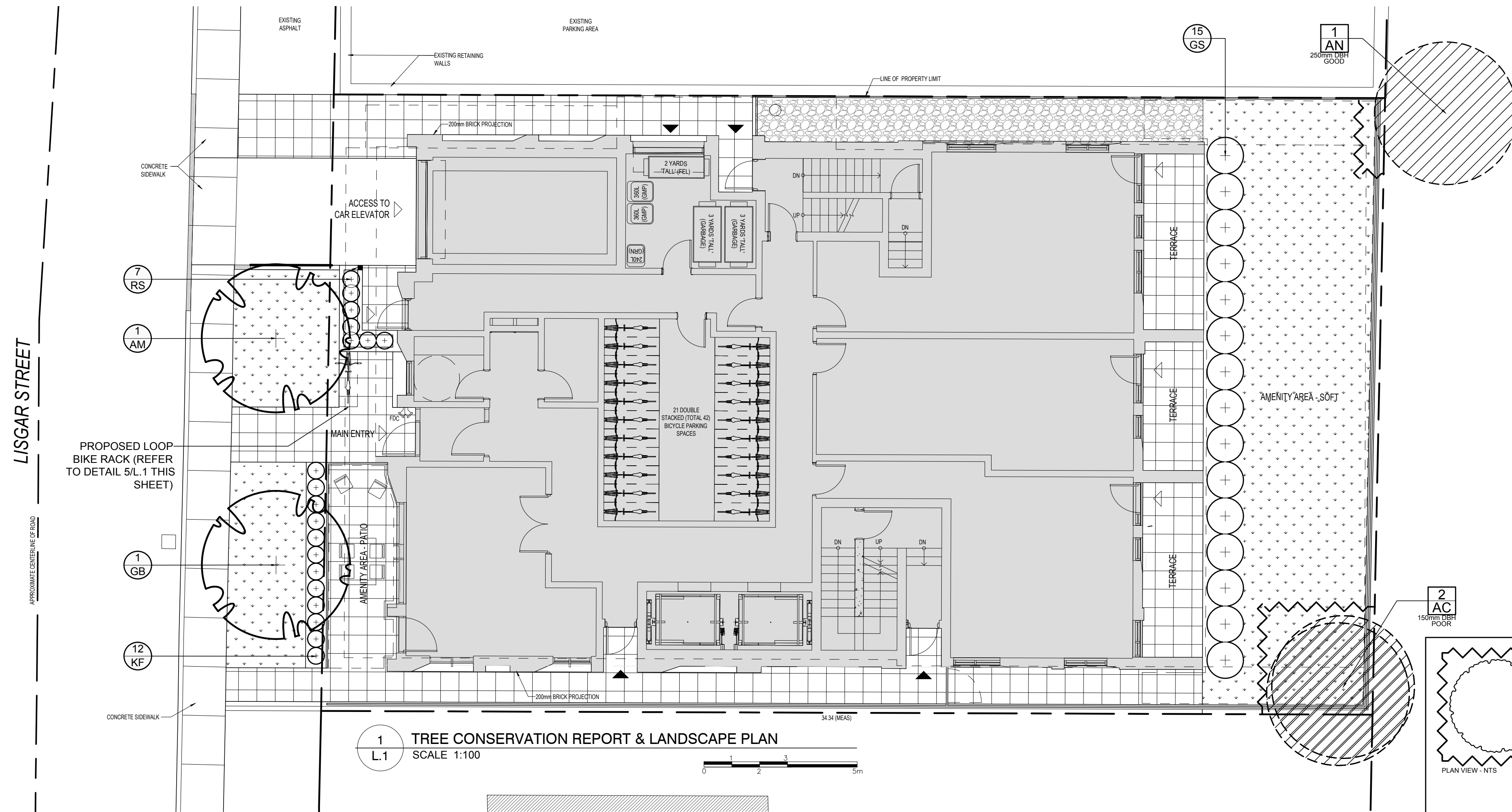


CLIENT:
230 LISGAR STREET INC.

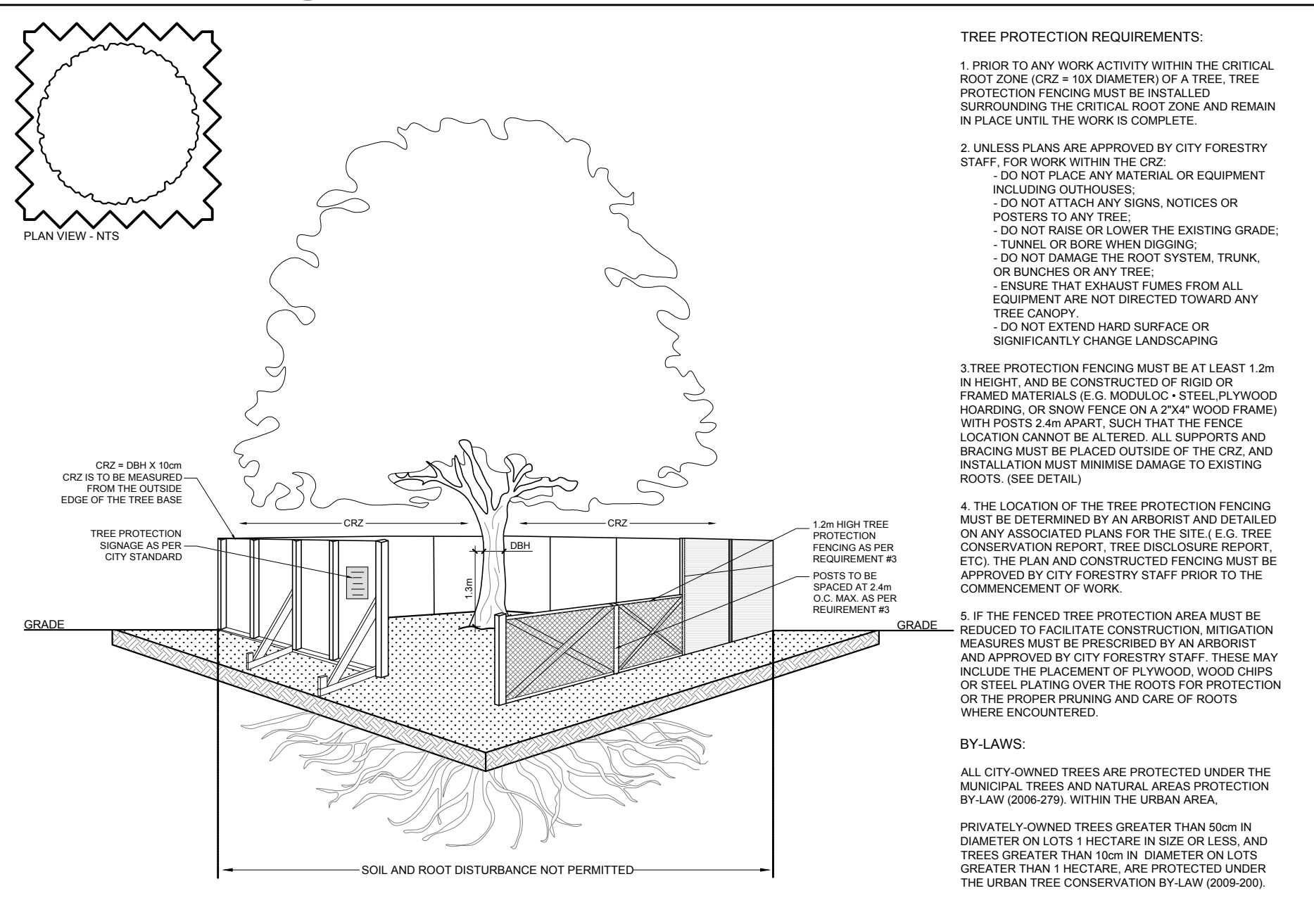
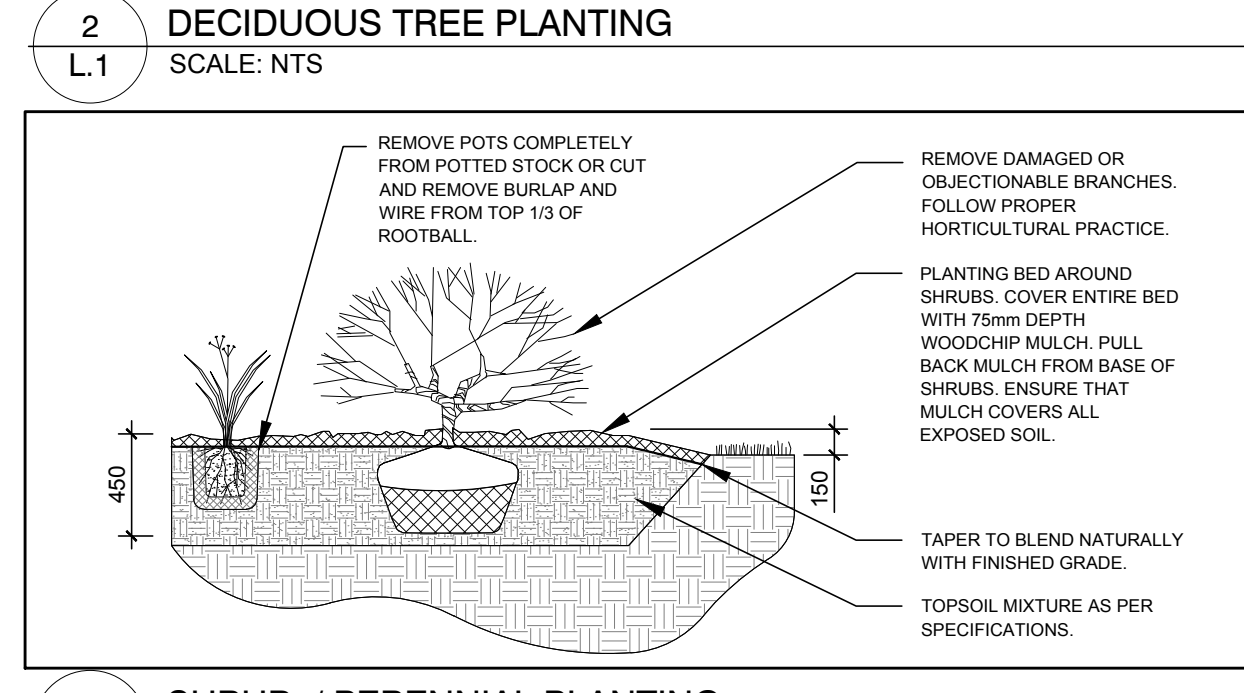
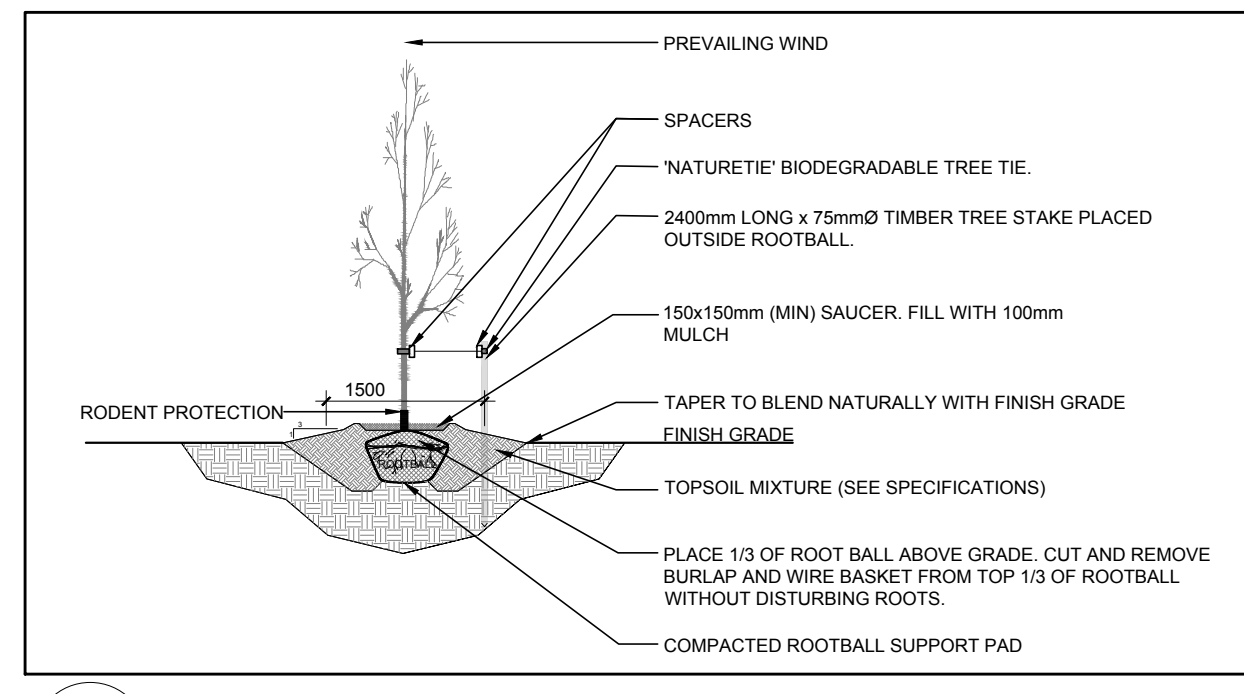
CONSULTANTS
ARCHITECTS
project1 studio
Project1 Studio Incorporated
(613) 254-5867

CIVIL ENGINEERS
NOVATECH
Engineers, Planners & Landscape Architects
Suite 200, 240 Michael Cowpland Drive
Ottawa, Ontario, Canada K2M 1P6
Telephone (613) 254-5867
Facsimile (613) 254-5867
Website www.novatech-eng.com

- LEGEND**
- PROPOSED DECIDUOUS TREE
 - PROPOSED SHRUBS / PERENNIALS
 - PROPOSED RIVERSTONE
 - PROPOSED SOD
 - PROPOSED PRECAST CONCRETE PAVERS
 - TREE PROTECTION FENCE
 - PROPOSED LOOP BIKE RACK
 - EXISTING TREE TO REMAIN



1 TREE CONSERVATION REPORT & LANDSCAPE PLAN
SCALE 1:100



GENERAL NOTES:

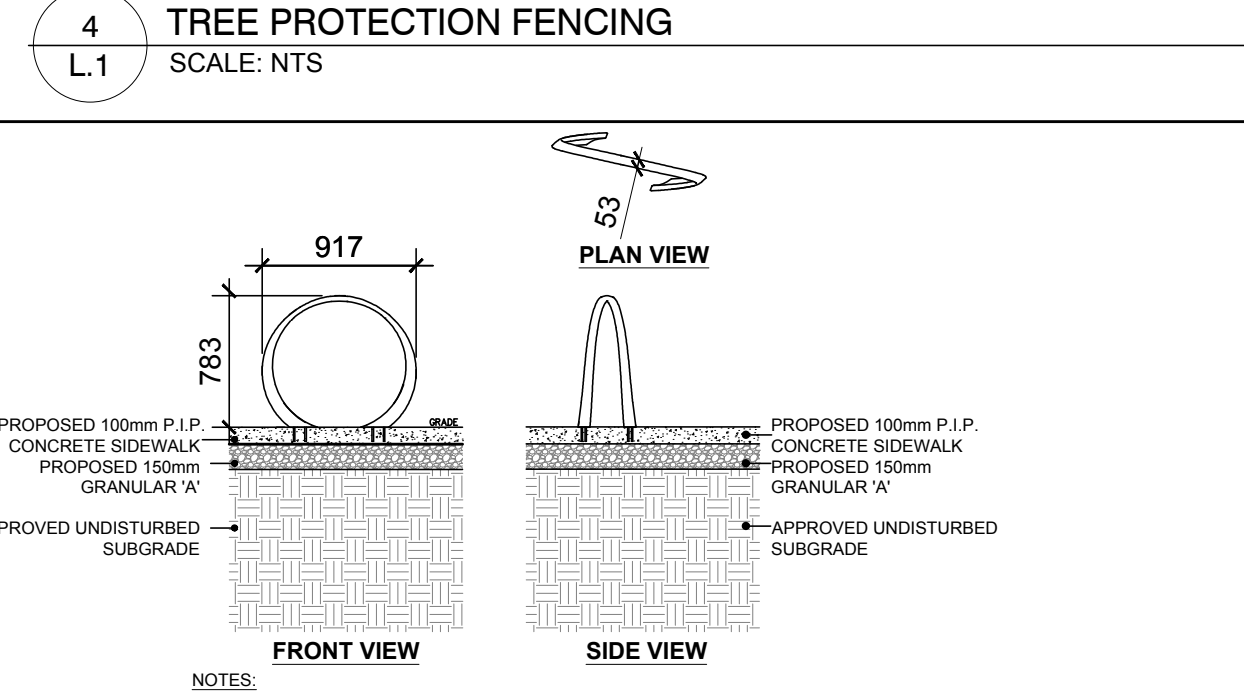
- It is the responsibility of the appropriate contractor or official to report any errors, omissions or discrepancies on this plan with actual site conditions to the Landscape Architect before proceeding with construction.
- The contractor is to notify all utility companies and authorities prior to any excavation and ascertain locations of underground services.
- The contractor is to reinstate all areas and items damaged as a result of construction activity.
- The contractor is to comply with all pertinent codes and by-laws.
- The contractor is to maintain a positive surface run-off throughout the entire construction period.
- The Landscape Architect is not responsible for subsurface conditions.
- The contractor is to identify all existing trees to remain on site with the Landscape Architect prior to construction.
- The contractor is to stake the proposed location of all plant material in conjunction with the Landscape Architect prior to excavation.
- Minimum distances for selected deciduous trees are as follows:
 - Building Foundations 7.5m
 - Sidewalks 1.5m
 - Public Streets 2.5m
 - Underground Infrastructure 2.0m
- All trees within 1m of underground utility trenches are to be excavated by hand.
- Remove all protective wrapping from tree trunks after installation.
- Staking of trees shall only be performed if necessary.
- Ensure that mulch is pulled back a min. distance of 75mm from base of tree trunk.

EXISTING TREE LIST

KEY	QTY	BOTANICAL NAME	COMMON NAME	SIZE	CONDITION	REMARKS
TREES						
AC	2	Amelanchier canadensis	Serviceberry	150mm DBH	Poor	To remain
AN	1	Acer negundo	Manitoba Maple	250mm DBH	Good	To remain

PROPOSED PLANT LIST

KEY	QTY	BOTANICAL NAME	COMMON NAME	SIZE	CONDITION	REMARKS
TREES						
AM	1	Acer x freemanii 'Armstrong'	Armstrong Maple	60mm ø	B&B	
GB	1	Ginkgo biloba 'Princeton Sentry'	Princeton Sentry Ginkgo	60mm ø	B&B	Male tree
SHRUBS						
GS	15	Spiraea x arguta	Garland Spirea	800mm ht.	Potted	
PERENNIALS AND ORNAMENTAL GRASSES						
KF	12	Calamagrostis 'Karl Foerster'	Feather Reed Grass	250mm pot	Potted	600mm o.c.
RS	7	Hemerocallis 'Ruby Stella'	Ruby Stella Daylily	100mm pot	Potted	400mm o.c.



No.	Issue	Date	DR	CK
2	REVISED PER NEW SITE PLAN	05/29/2023	ML	JL
1	ISSUED FOR SITE PLAN CONTROL	11/22/2022	ML	JL

JAMES B. LENOX & ASSOCIATES INC.
LANDSCAPE ARCHITECTS
3332 CARLING AVE. OTTAWA, ONTARIO K2M 1S8
Tel. (613) 722-5168 Fax. (866) 343-3942

PROJECT
PROPOSED NINE STOREY RESIDENTIAL BUILDING
230-232 LISGAR STREET, OTTAWA ON

DRAWING
TREE CONSERVATION REPORT & LANDSCAPE PLAN

STAMP

SCALE: AS SHOWN
START DATE: SEPTEMBER 2022
PROJECT NO.: 22MIS2283
DRAWING NO.: L.1

PROJECT NORTH

L.1

PLOT SIZE ARCH-D

D07-12-22-0166

#18902