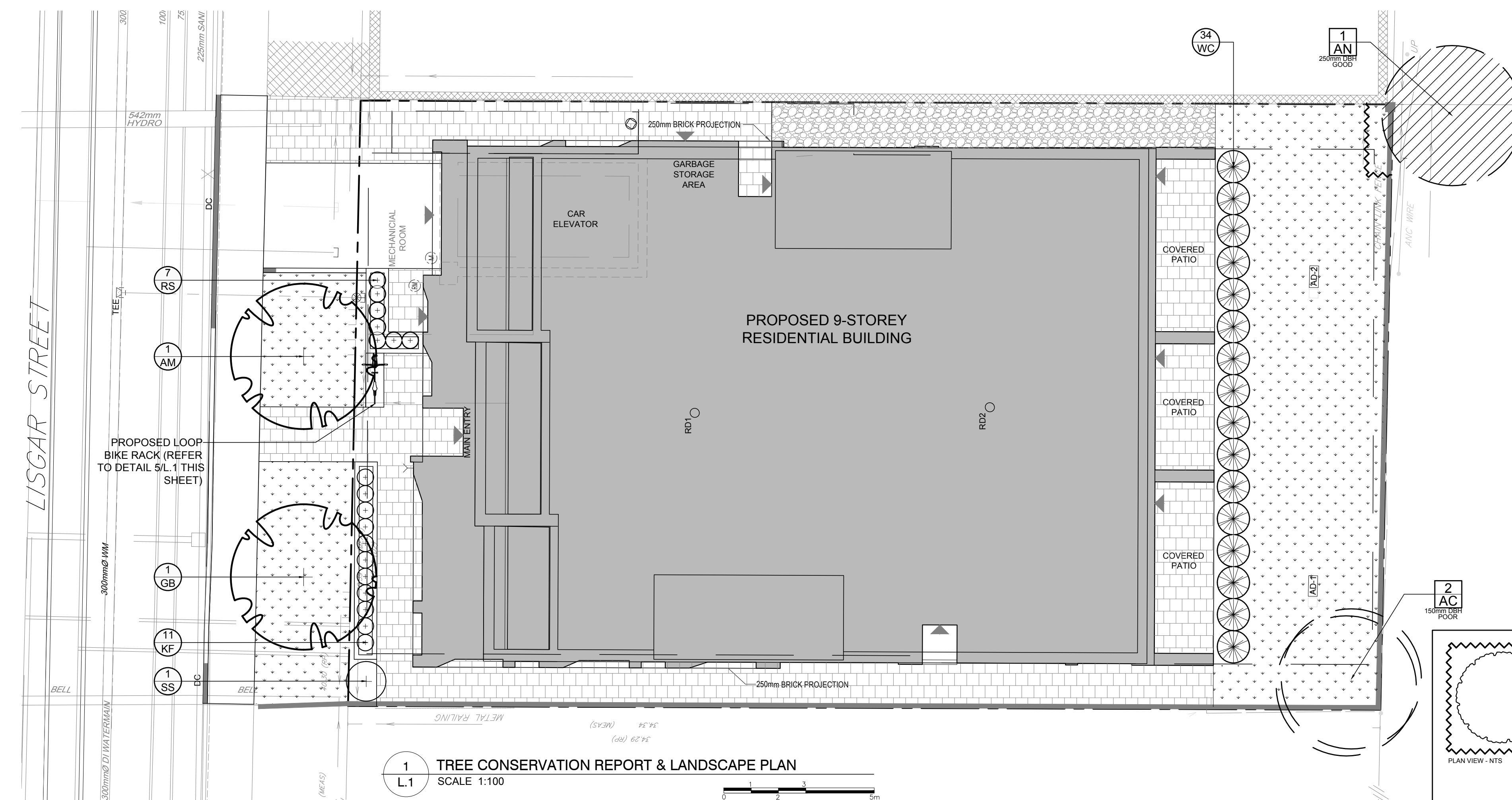


CLIENT:
230 LISGAR STREET INC.

CONSULTANTS
ARCHITECTS
project1 studio
Project1 Studio Incorporated
(613) 254-5867

CIVIL ENGINEERS
NOVATECH
Engineers, Planners & Landscape Architects
Suite 200, 240 Michael Cowpland Drive
Ottawa, Ontario, Canada K2M 1P6
Telephone (613) 254-5867
Facsimile (613) 254-5867
Website www.novatech-eng.com

- LEGEND**
- PROPOSED DECIDUOUS TREE
 - PROPOSED SHRUBS / PERENNIALS
 - PROPOSED RIVERSTONE
 - PROPOSED SOD
 - PROPOSED PRECAST CONCRETE PAVERS
 - TREE PROTECTION FENCE
 - PROPOSED LOOP BIKE RACK
 - EXISTING TREE TO REMAIN
 - EXISTING TREE TO BE REMOVED



1 TREE CONSERVATION REPORT & LANDSCAPE PLAN
SCALE 1:100

- GENERAL NOTES:**
- It is the responsibility of the appropriate contractor or official to report any errors, omissions or discrepancies on this plan with actual site conditions to the Landscape Architect before proceeding with construction.
 - The contractor is to notify all utility companies and authorities prior to any excavation and ascertain locations of underground services.
 - The contractor is to reinstate all areas and items damaged as a result of construction activity.
 - The contractor is to comply with all pertinent codes and by-laws.
 - The contractor is to maintain a positive surface run-off throughout the entire construction period.
 - The Landscape Architect is not responsible for subsurface conditions.
 - The contractor is to identify all existing trees to remain on site with the Landscape Architect prior to construction.
 - The contractor is to stake the proposed location of all plant material in conjunction with the Landscape Architect prior to excavation.
 - Minimum distances for selected deciduous trees are as follows:
 - Building Foundations 7.5m
 - Sidewalks 1.5m
 - Public Streets 2.5m
 - Underground Infrastructure 2.0m
 - All trees within 1m of underground utility trenches are to be excavated by hand.
 - Remove all protective wrapping from tree trunks after installation.
 - Staking of trees shall only be performed if necessary.
 - Ensure that mulch is pulled back a min. distance of 75mm from base of tree trunk.

EXISTING TREE LIST

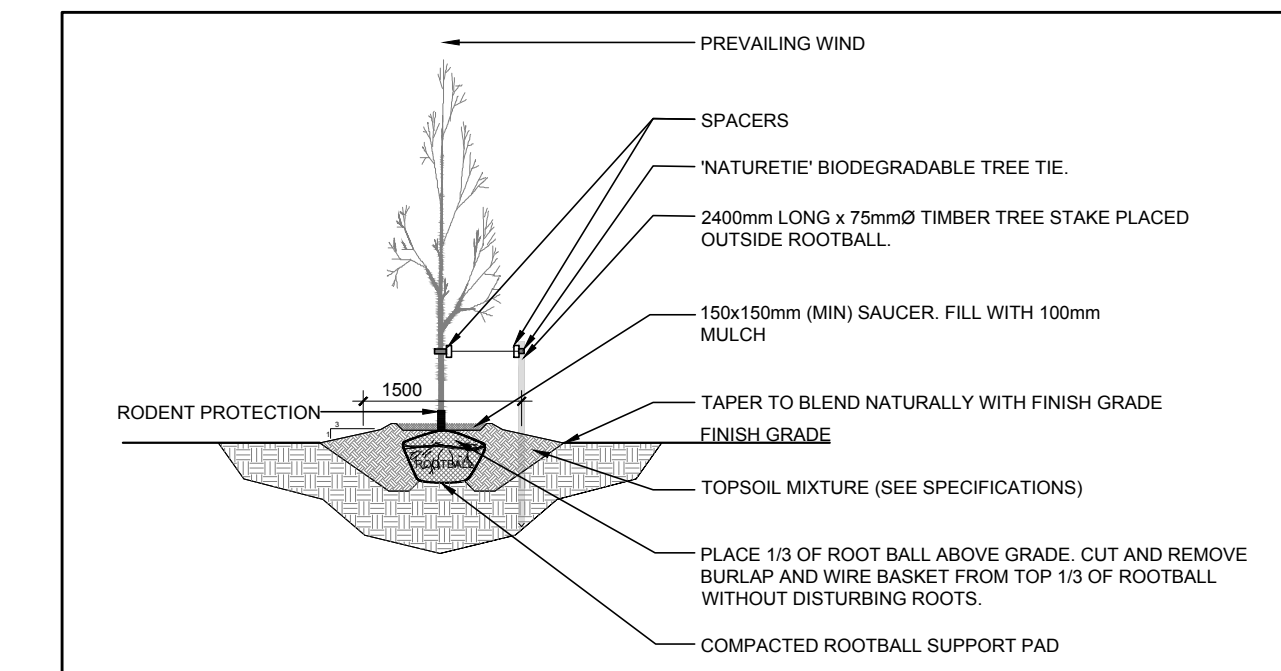
KEY	QTY	BOTANICAL NAME	COMMON NAME	SIZE	CONDITION	REMARKS
TREES						
AC	2	Amelanchier canadensis	Serviceberry	150mm DBH	Poor	To be removed
AN	1	Acer negundo	Manitoba Maple	250mm DBH	Good	To remain

PROPOSED PLANT LIST

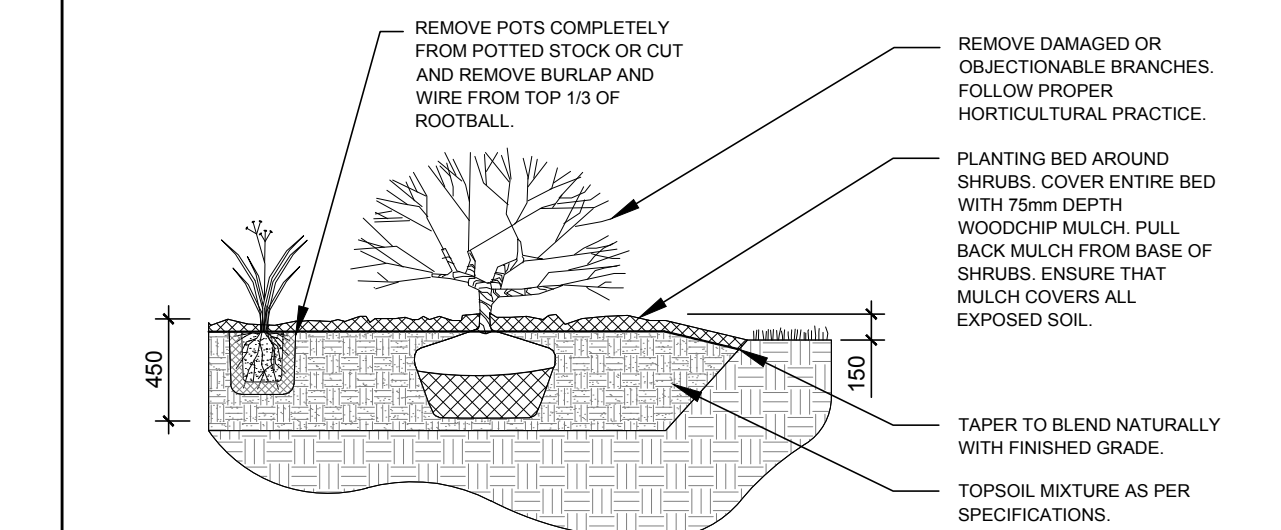
KEY	QTY	BOTANICAL NAME	COMMON NAME	SIZE	CONDITION	REMARKS
TREES						
AM	1	Acer x freemanii 'Armstrong'	Armstrong Maple	60mm ø	B&B	
GB	1	Ginkgo biloba 'Princeton Sentry'	Princeton Sentry Ginkgo	60mm ø	B&B	Male tree
SHRUBS						
SS	1	Sorbaria sorbifolia	Ural False Spirea	800mm ht.	Potted	
WC	34	Thuja occidentalis 'Clumps'	White Cedar Clumps	1.5m Ht.	Bare root	3 trunks or more

PERENNIALS AND ORNAMENTAL GRASSES

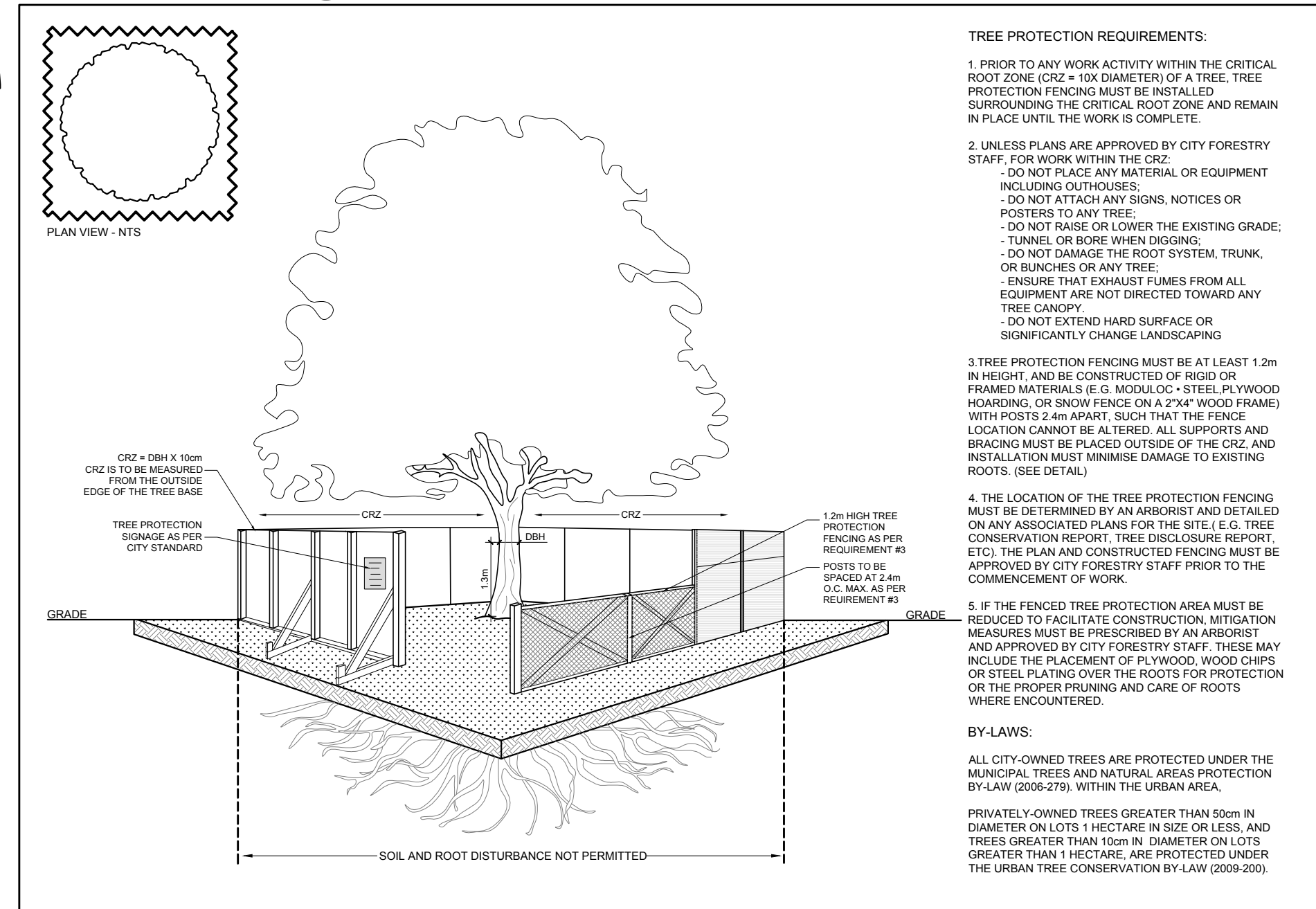
KF	11	Calamagrostis 'Karl Foerster'	Feather Reed Grass	250mm pot	Potted	600mm o.c.
RS	7	Hemerocallis 'Ruby Stella'	Ruby Stella Daylily	100mm pot	Potted	400mm o.c.



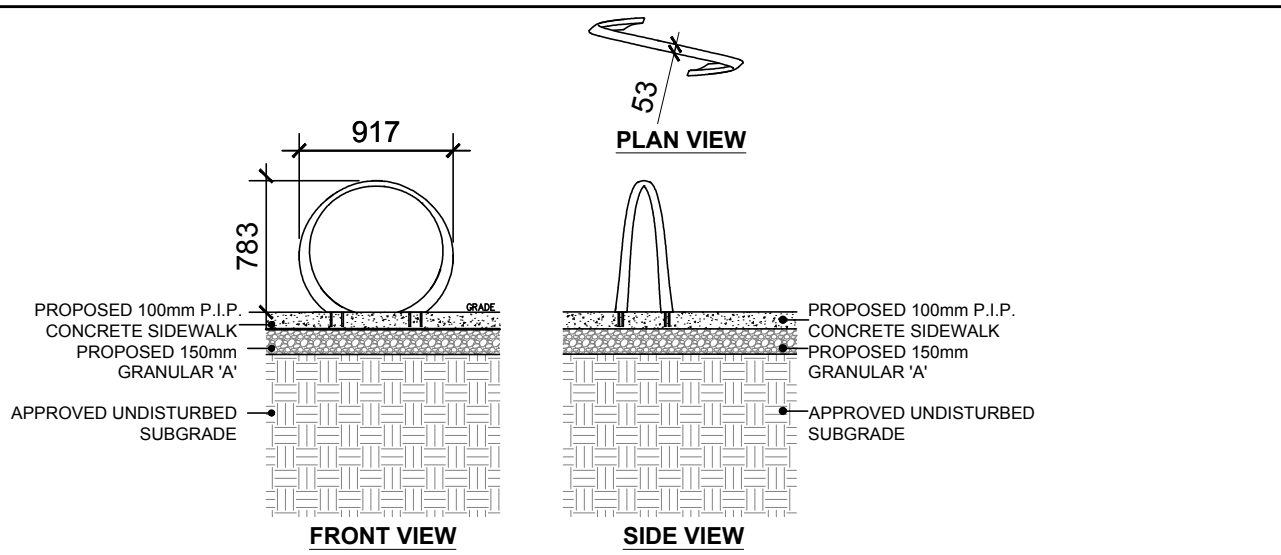
2 DECIDUOUS TREE PLANTING
SCALE: NTS



3 SHRUB / PERENNIAL PLANTING
SCALE: NTS



4 TREE PROTECTION FENCING
SCALE: NTS



5 LOOP BIKE RACK
SCALE: NTS

No.	Issue	Date	ML	JL
1	ISSUED FOR SITE PLAN CONTROL	11/22/2022		

JAMES B. LENOX & ASSOCIATES INC.
LANDSCAPE ARCHITECTS
3332 CARLING AVE. OTTAWA, ONTARIO K2M 1S8
Tel. (613) 722-5168 Fax. (866) 343-3942

PROJECT
PROPOSED NINE STOREY RESIDENTIAL BUILDING
230-232 LISGAR STREET, OTTAWA ON

DRAWING
TREE CONSERVATION REPORT & LANDSCAPE PLAN

STAMP

SCALE: AS SHOWN
START DATE: SEPTEMBER 2022
PROJECT NO.

PROJECT NORTH

DRAWING NO. **L.1**
PLOT SIZE ARCH-D